

5382
40

No. 12591
500, 2000

N 52 E 50

Surveyed for Allen
M Lane 500 acres of land
on two Military Warrants
No 6411 & 6412 on the wa-
ters of Mill Creek. Begin-
ning at two hickories

and an ash northerly corner to Jourdans survey No 5275 in the
line of No 4810, thence S. 38. E 160 poles to two elms and a beech
west corner to Young Mikerons survey No 12283 thence with his
line N. 52, E. 500 poles to two sugar trees in the line of No 12388 &
12401; thence binding on said survey N. 38 W 160 poles to three
sugar trees Easterly corner to survey No 6232, thence binding there-
on and on No. 4810 S 52, W. 500 poles to the beginning.

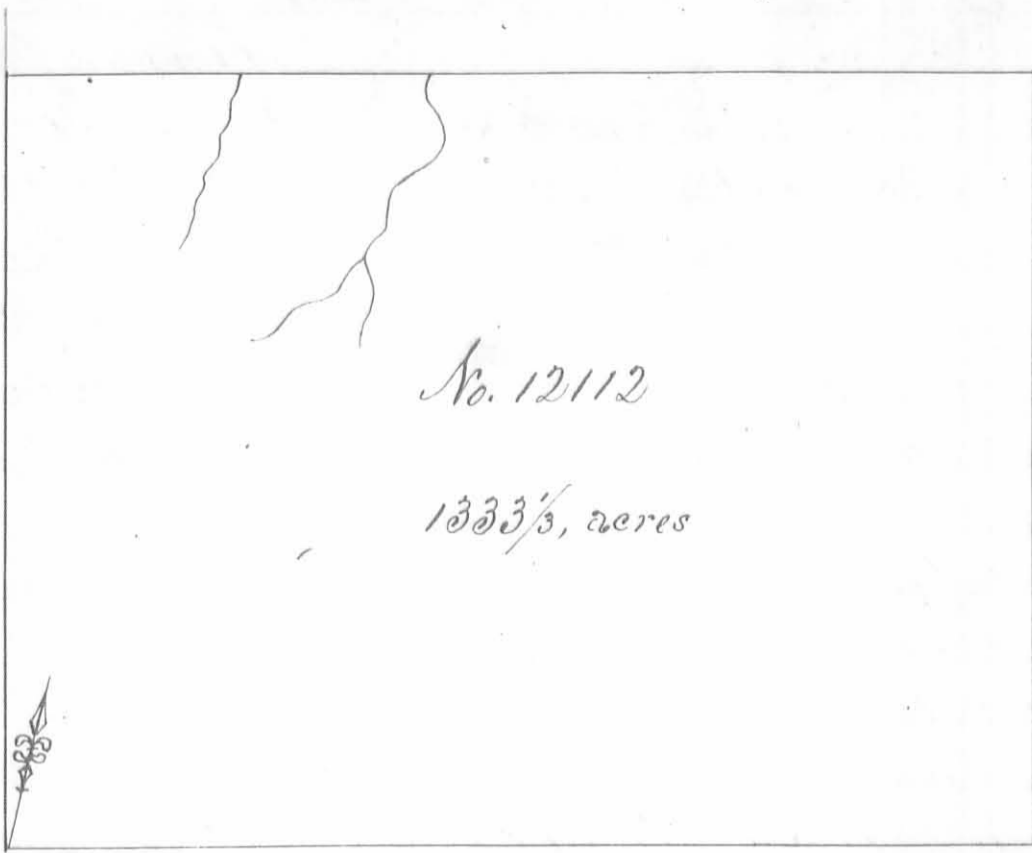
John Inskip
Jepu H Garwood C.C.

Allen Latham S.
July 20th 1829
August 20. 1830

Surveyed for John Evans 466²/₃ acres of land on part of
land on part of a Military warrant No. 6524 on the waters
of Rush Creek a branch of the Scioto River; beginning at
a hickory and two beeches the south easterly corner to Say-
lor and Pierces survey No. 10060 for 888²/₃; thence N 78 E No 12112
(passing the north westerly corner of Tibbs and others sur-
vey No. 9915, a beech & two sugar trees at about 50 poles) 466²/₃ acres
306 poles to a stake in the line of said survey; thence
N. 12 W. 400 poles to a stake in the line of Robert Means
survey No. 9959; thence with said line S
78. W. 148 poles to a stake northeasterly
corner to the Reps. of Richard Calls sur-
vey No 7161 for 296 acres; thence with
the line of said survey S. 12 E. 300 poles to the south easterly corner
of said survey; thence with another line of said survey S. 78, W. 158
poles to a stake in the line of the aforesaid Saylor and Pierces sur-
vey; thence with their line S. 12 E 100 poles to the beginning.

Levi D Sharp
Holkiah Rosebrag C.C.
Wilson L. Thompson M.k.r.

John Evans D.S.
Febry. 25th 1830
March 17. 1830



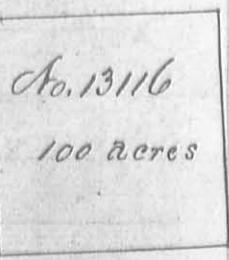
Surveyed for the heirs of Elizabeth R Northington 1333 1/3 acres of land on a military warrant No 6530 on the waters of Rush Creek; Beginning at a stake South East corner to John Evans survey No 12112 for 466 2/3 acres in the north line of the Rep^t of Willoughby Tibbs and others survey No. 9915, thence with

their line and the line of Richard Dorseys survey No. 12105 N. 78. E 533 1/3 poles passing a maple ash and Spanish oak Northwest corner to Dorseys said survey at 133 poles to a stake Northeast corner to said survey in the line of the Reps. and services of George Minchesters survey No 10971, thence with said line N. 12 N. 400 poles to a hickory, ash and maple, Northwest corner to said survey in the line of the Rep^t. of Michael Rudolphs survey No. 9960 & 10042, thence with the line of said survey and the line of Robert Means survey No 9959 S 78 N 533 1/3 poles crossing a branch at 313 to an elm, beech and Sugar tree south west corner to said Rudolph and a branch at 410 poles to a stake in the line of said Means said survey and North east corner to Evans said survey No. 12112, thence with Evans line S. 12 E 400 poles to the beginning.

Daniel Gregg
 Andrew D Hendrick C.C.
 James McArthur M.

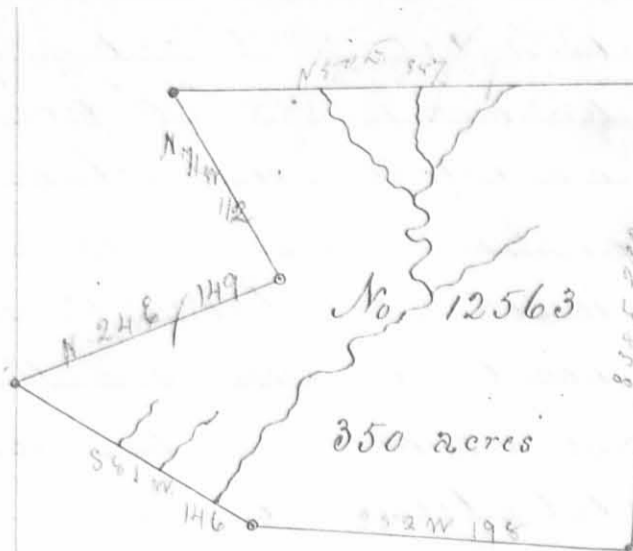
E. P. Hendrick D.S.
 July 1st 1840
 July 15th 1840

Surveyed for John Huston of 100 acres of land on a military warrant No 6685 on the waters of the big Miami River; beginning at a small ash and two beech southwest corner to Ephraim Ralphs survey No. 9990 thence with his line N. 78. E 124 poles to a beech and two sugar trees, thence S. 12. E 124 1/2 poles to a white oak cherry and ironwood; thence S. 78. N. 124 poles to two maples; thence N 12 W. 124 1/2 poles to the beginning.



Levi D Sharp
 Melkiah Roseburgh C.C.
 Wilson S Thompson

Alva Satham S.
 March 15. 1830
 March 16. 1830



Surveyed for Outliest Harrison
 of a Military warrant No. 6660 on the
 waters of Mill Creek; beginning at two
 beeches and an ash south corner to Sit-
 tleberry Aldredges survey No. 9372 west
 corner to Joseph and Benjamin
 W. Ladds and Thomas Norwells sur-
 vey No. 9198 and north corner to Thom-

as Perkins survey No. 9370, thence with Perkins line S 52 W 198
 poles to an ash and beech west corner to said survey and North cor-
 ner to Walter Lums survey No. 10426, 10427 & 11041; thence with
 his line S 81 W 146 poles crossing several branches to two beeches
 a sassafras and red oak corner to said survey and corner to
 James Herons survey No. 11076, thence with his line N. 24 E 149
 pole to two beeches and an ash corner to said survey; thence
 with another line thereof N. 71 W. 112 poles to a sugar tree corner
 to said survey and corner to Harvans and M. Arthur's survey No. 4984
 9423 & 9872, thence with their line N. 50 E 387 poles crossing several
 branches to a stake corner to their survey in the line of John M.
 Donalds survey No. 5088, thence with said line S. 38 E 12 poles to
 three beeches and a sugar tree north corner to Aldredges said
 survey; thence with his line S. 52 W 134 poles to a lynn, dog-
 wood, hickory, ironwood, and sugar tree west corner to said
 survey; thence with another line thereof S. 38 E 238 poles to the
 beginning.

William Kiwell
 Asahel Kiwell C.C.
 Aaron I. Hunt M.k.r.

Adwallader Wallace D.S.
 April 1st 1825
 Aug^t 31st 1825

Surveyed for Joshua Kinard 100 acres of land on a mili-
 tary warrant No 5073 on the waters of Mill Creek. Begin-
 ning at a sugar tree and two beeches N. W. corner of Luke Can-
 ons and others survey No. 9890, thence S. 78 W 100 poles to a
 stake S. E. corner of Terence Conners survey No. 13202;
 thence N. 12 W. 160 poles to two sugar trees and an ash;
 thence N. 78, E 100 poles to w stake in line of Nicholas Saliferos entry
 No. 9912, thence S. 12 E 160 poles to the beginning.

No. 13203
 100 acres

John Resbrook
 William Paxon C.C.
 John Richerson M.k.r.

C. F. Kendrick D.S.
 October 16th 1830
 October 18, 1830

No. 13199

223 1/3 acres



Surveyed for William M. Kenton of 223 1/3 acres of land on part of a Military Warrant No 2898 on the waters of Mill Creek; Beginning at a rock sugar tree beech & ironwood N.W. corner of John Griffiths 100 acre survey No. 9911 thence N. 12 W. 240 poles to three beeches; thence N. 78 E 154 poles to two sugar trees and Ironwood, thence S 12 E 240 poles to two ashes, a sugar tree and two dogwoods, thence E. 78 N. 154 poles to the beginning.

John Rosebrock
William Paxon C.C.
John Richerson M.k.r.

E. P. Kendrick D.S.
October 16th 1830
October 18. 1830

Surveyed for Nicholas Telepro 17 1/2 acres of land on part of a Military warrant No 554 on the waters of Mill Creek, Beginning at two sugar trees & an ash S.E. corner of William M. Kenton's survey No. 13200, thence with Kenton's line N. 12 W. 240 poles to three beeches and a sugar tree, thence N. 78 E. 112 poles to three beeches S.E. corner of James Kendrick's survey No. 9936, thence S 12 E. 240 poles to a stake, thence S. 78 W. 112 poles to the beginning.

No. 12201

17 1/2 acres



John Rosebrock
William Paxon C.C.
John Richerson M.k.r.

E. P. Kendrick D.S.
October 16th 1830
October 18. 1830

No. 13202

200 acres



Surveyed for Terence Corner 200 acres of land on a Military Warrant No 3968 on the waters of Mill Creek Beginning at three beeches and two sugar trees South East corner of John Griffiths 100 acre survey No. 9911; thence with Griffiths line N. 12 W. 160 poles to a sugar tree, beech, ironwood and hickory; thence N. 78 E 200 poles to 2 sugar trees and an ash, thence S. 12 E 160 poles to a stake in the North line of Lewis and others survey No. 9889, thence S. 78 W. 200 poles to the beginning.

John Rosebrock
William Paxon C.C.
John Richerson M.k.r.

E. P. Kendrick D.S.
October 16th 1830
October 18. 1830

Surveyed for Valentine Peers
 1666 2/3 acres of land on part of a
 Military Warrant No 6549 on
 the waters of the Big Miami
 and Scioto Rivers: Beginning
 at a beech ash and how beam in
 the line of James Taylor & Steels
 survey No. 9968 - 62 poles N. 12 W
 from the Southwest corner of George
 Clarks survey No. 9947, thence N
 12 W. 992 poles passing Jones, Taylor
 & Steels corner and passing the south
 corner of David Lambert's 1000 acre sur-
 vey No. 12277 at 697 poles to a beech in
 his line 295 poles N 12 W from his said
 corner; thence S 78 W. 373 poles to a stake
 in Roberts line southwest corner to said
 Peers former survey of 2666 2/3 acres, thence
 with said line S. 24 1/2 E 1073 poles to an
 ash, maple & elm northwest corner to
 Walter Duns survey No 9946, 9925 &
 10121; thence with his line N. 78 E. 37 poles
 to two ash, thence N. 50 E 119 poles to the
 beginning.

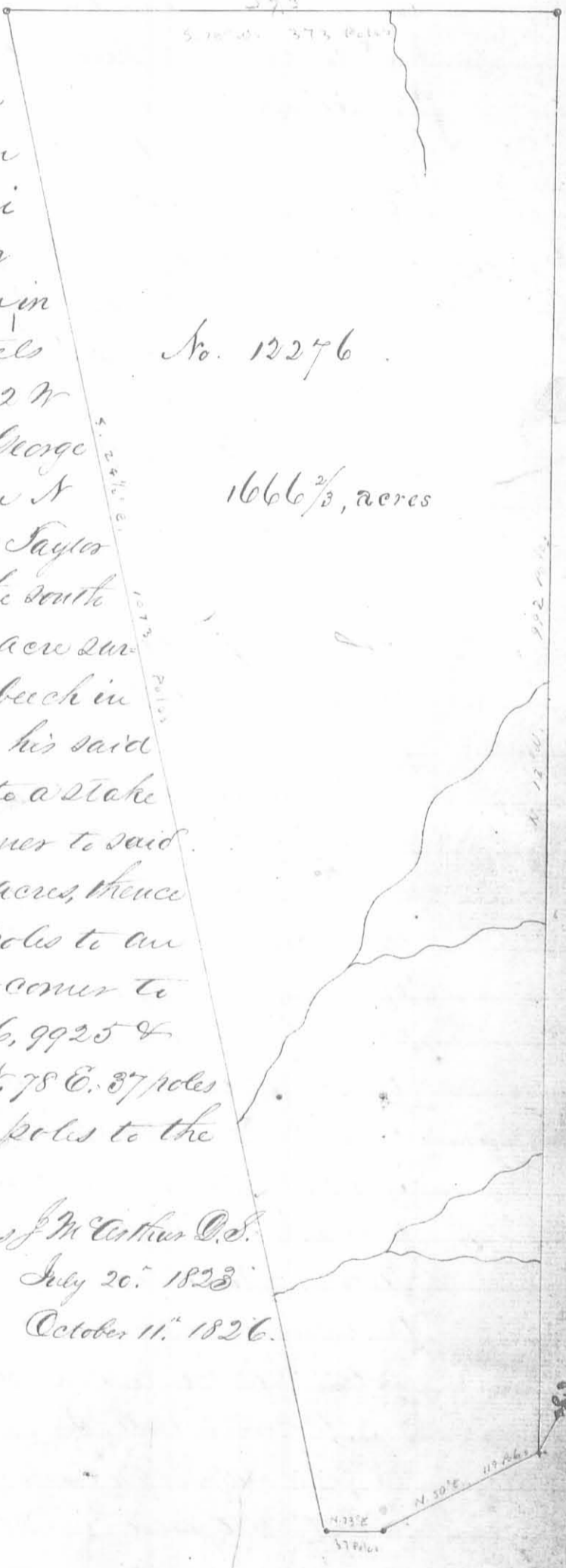
George Henry
 James H. C.

Thomas J. McArthur C.S.

July 20. 1823

Wm Colbeck M.Sr.

October 11. 1826.



No. 12276

1666 2/3, acres

No. 13200
200 acres

Surveyed for William M Newton 200 acres of land on a Military Warrant No 4485 on the waters of Neile Creek: Beginning at two ashes a Sugar tree and two dogwoods S.E. Corner of said Newton Survey No. 13199 thence N. 12 W 240 poles to two sugar trees and Ironwood, thence N. 78 E 138 poles to three beeches and a sugar tree, thence S 12 E. 240 poles to two sugar trees and an ash, thence S. 78 W. 138 poles to the beginning.

John Rosebrock
William Dixon
John Richardson M.k.r.

E.P. Kendrick, D.S.
October 16th 1830
October 18th 1830

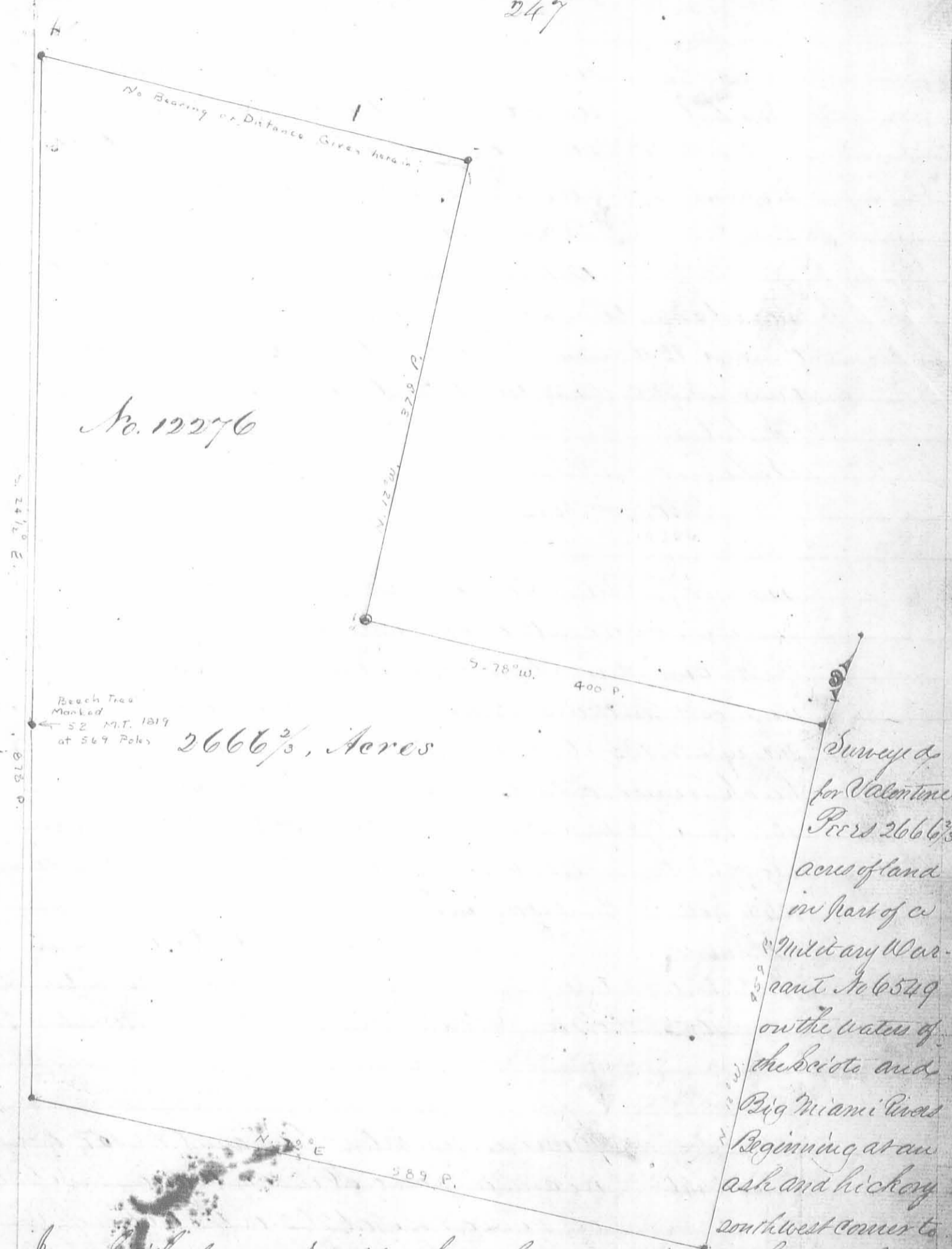
Surveyed for William M Newton 1046 acres of land on part of a Military Warrant No. 854 on the waters of Bakes Creek, beginning as a buckeye but oak, ash and horn beam on the bank of said Creek southwest corner to Stanton & Madison's

No. 13318
1046, acres

Survey No. 9938 & NW corner to Swan & others Entry, No. 9913, thence S. 78 W. 459 1/4 poles to three beech and a sugar tree corner to said Newton's Survey No. 13200 thence with his line to two sugar trees and an ash S.E. corner to said survey thence N. 78 E. 112 poles to a stake N.E. corner to Joshua King's survey No. 13203; thence S. 12 E. 160 poles to a sugar tree and a beech, thence N. 78 E. 347 1/4 poles to three beech south east corner to Swan and others aforesaid Entry; thence N. 12, W. 400 poles to the beginning.

John Rosebrock
William Paxton
John Richardson M.k.r.

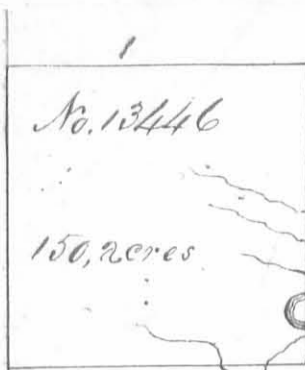
E.P. Kendrick D.S.
2nd 1832
2nd 1832



James Smith's survey No 10360, thence S. 78. W. 400 poles to three beeches; thence N. 12 W. 379 poles to an ash in ^{one line omitted here - 112 m} Robert's line thence with said line S. 24 1/2 E. 878 poles passing a beech marked 52 M.T. 1819. at 569 poles to a walnut in said line, thence N. 78 E 589 pole cross- ing a branch to a beech in the line of George Saubert's survey No. 13277; thence with his line N. 12 W 459 poles to the beginning

Levi C. Sharp
 Nicholas Roselburg 3 10.6.
 Wilson S. Thompson M.L.S.

Thos. S. Matthews D.S.
 August 5. 1823
 July 16. 1825



Surveyed for Allen Latham Apr¹¹ 150 acres of land in part of a Military warrant No 6262 on Rush Creek; beginning at a small buckeye sugar tree and white walnut on a bluff south west corner to Richards Kermans survey No. 10041 thence with his line N. 12 W. 155²/₁₀ poles to a hickory sugar tree and ironwood near a bank; thence S. 78 W. 154⁷/₁₀ poles to two beeches and an ironwood thence S. 12 E. 155²/₁₀ poles to three beeches in the line of survey No 9909 thence N. 78 E. 154⁷/₁₀ poles to the beginning.

J. Rubert

J. Rubert C.C.

James Romine M.k.r.

E. P. Kendrick D.S.

November 25th 1833

November 28th 1833

Surveyed for Allen Latham Apr¹¹ 150 acres of land on part of a Military warrant No. 6714 on the waters of the Miami River; beginning at two beeches and an ironwood northwest corner to said Latham's former survey No. 13446; thence N. 12, W. 155²/₁₀ poles to a beech ironwood and hickory corner to Gormans land thence S. 78 W. 154⁷/₁₀ poles to three beeches northeast corner to survey No 9933 thence S. 12 E. 155²/₁₀ poles to three beeches, thence N. 78 E. 154⁷/₁₀ poles to the beginning.

J. Rubert

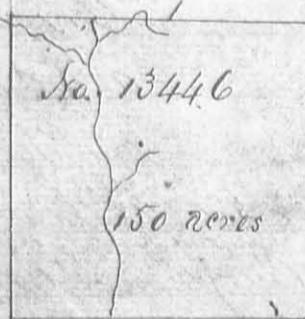
J. Rubert C.C.

James Romine M.k.r.

E. P. Kendrick D.S.

November 26th 1833

November 28th 1833



Surveyed for Allen Latham Apr¹¹ 150 acres of land 100 acres on part of Military warrant No 6549 and 50 acres on part of No. 6262 on the waters of Rush Creek beginning at two beeches and an ironwood southeast corner to said Latham's former survey No 13446 thence S. 12 E. 155²/₁₀ poles to three beeches in the line of survey No. 9909 thence S. 78 W. 154⁷/₁₀ poles to a sugar tree, elm and red oak (the last dead) corner to survey No. 9908, thence N. 78 E. 155²/₁₀ poles to three beeches south west corner to said Latham's former survey No 13446, thence N. 78 E. 154⁷/₁₀ poles to the beginning.

J. Rubert

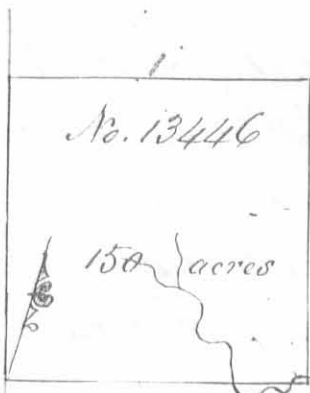
J. Rubert C.C.

James Romine M.k.r.

E. P. Kendrick D.S.

November 27th 1833

November 28th 1833



Surveyed for Allen Satham Apr 150 acres of land on part of a Military Warrant No 6714 on the waters of Rush Creek; beginning at two beeches and an iron wood northeast corner to said Satham's former survey No 13446, thence N. 12 W 155⁷/₁₀ poles to a beech iron wood and hickory corner to Deman, thence with his line passing his southeast corner N 78 E 154⁷/₁₀ poles to three beeches corner to Survey No. 9925, thence S. 12 E 155⁷/₁₀ poles to a hickory sugar tree and ironwood near a run; thence S 78. W, 154⁷/₁₀ poles to the beginning.

J. Hubert $\frac{3}{4}$

J. Hubert $\frac{3}{4}$ C.C.

James Romine M. S. r.

E. J. Kendrick D. S.

November 28th 1833

November 29th 1833

Surveyed for Samuel Hyde Saunders Apr 600 acres of land on part of two Military Warrants 400 acres on No. 6661 and 200 acres on No 6660 on the waters of Mill Creek Beginning at two Sugar trees beech and Ash North

west corner to Benjamin Biggs survey No 5209 Southwest corner to William Evans survey No. 6251, thence with Evans line North 163 poles to a sugar tree, black oak and hickory Northwest corner to said survey; thence East 400 poles to two Ashes North East corner to said survey, thence South 363 poles passing the southeast corner of said survey and North East corner to Biggs said survey at 163 poles and with Biggs line to two beeches and a sugar tree southeast corner to said survey and South corner to Thomas Chilton survey No. 77546155, thence with his line N. 7. E. 355 poles to three sugar trees and an Iron wood South East corner to Benjamin W Ladd's survey No. 6345, thence with his line West 542 poles to two sugar trees and a beech South West corner to said survey in the line of Thomas Boyers survey No. 5288, thence with said line S 13 E 340 poles to the beginning

David C Davis $\frac{3}{4}$

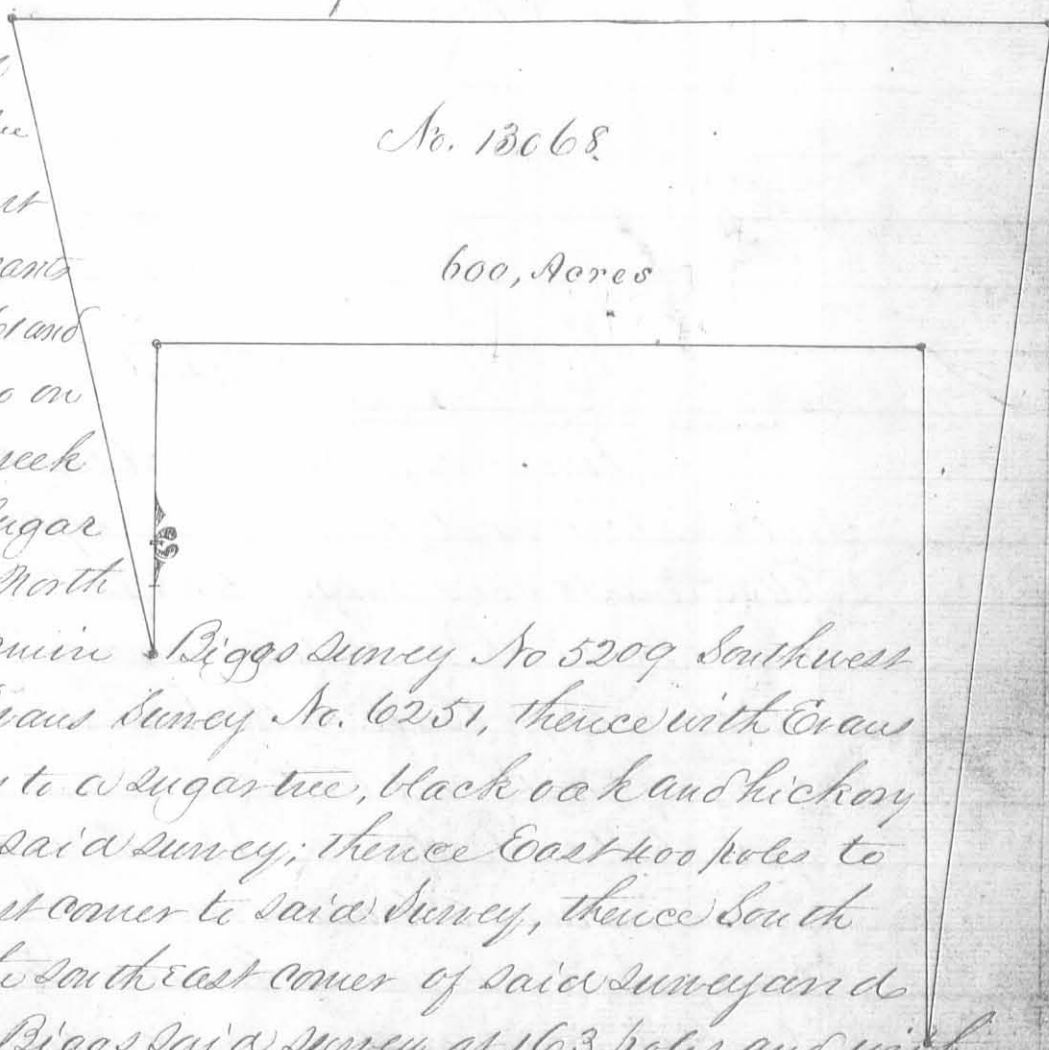
Solomon Madbery $\frac{3}{4}$ C.C.

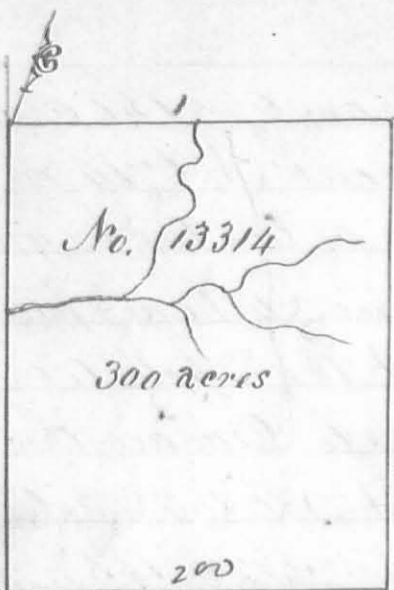
David Chapman M. S. r.

Edwallader Natta D. S.

Febry. 5th 1830

Febry 8 1830

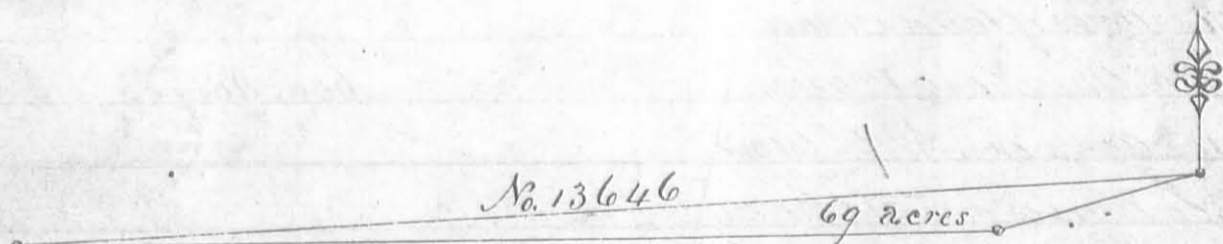




Surveyed for Duncan McArthur Apr 300 acres of land on a Military warrant No. 2831 and part of two other warrants to wit: 60 acres on No. 5470 and 40 acres on No. 6071 (which have been patented and lost by interference) and on Entry No. 13314 on the waters of the big Miami; beginning at two beeches and a sugar tree southwest corner to said McArthur's survey No. 9974 and North east corner to Robert Meane's survey No. 9952 thence with the line of the last mentioned survey N. 78. E 200 poles crossing a branch at 100 poles to two beeches in the line of Survey No. 9952 thence with said line N. 12. W. 240 poles crossing a large branch at 144 poles to the beginning.

George McColloch ³
 George Henry ³ C.C.
 David Chapman M.k.s.

E. P. Kendrick D.S.
 October 15th 1832
 September 9th 1832



Surveyed for Samuel A Sanders Apr 69 acres of land on part of three Military warrants viz: 39 acres on No. 6652 20 acres on No. 6653 and 10 acres on No. 6658 on the waters of Beecher Creek; beginning at a beech North east corner to Duncan McArthur's survey No. 13316, 13317 & 13410 in the Greenville Treaty line, thence with said line S. 78 W 1200 poles to a three pronged willow on the west bank of Rush Creek thence N. 80. E 1100 poles passing the Northwest corner of James McAbins survey No. 3323 that of George McCredie's survey No. 3314 and of Charles Humphries survey No. 3472 to the hickories two sugar trees and an iron wood the North east corner of said survey No. 3472, thence N. 80 E 131 poles to the beginning.

Nelson Dickinson ³
 Thomas Dickinson ³ C.C.
 Samuel A Sanders M.k.s.

E. P. Kendrick D.S.
 May 1, 1836
 May 20, 1836