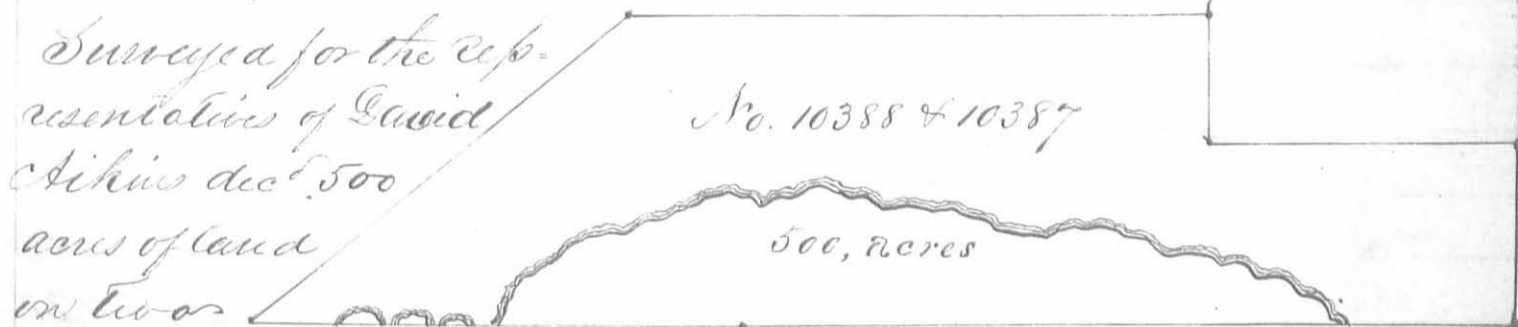


Surveyed for Walter Dun aⁿ 100 1/2 acres of land on part of three Military warrants, 50 1/2 acres on No. 5828 10 acres on No. 6218 and 35 acres on No. 6520 on the waters of the big Miami river; beginning at four elms northwest corner to Robert Means Survey No. 9929 and southeast corner to George Clark's Survey No. 9948; thence with Means line S. 12 E. 152 poles to a stake in a large prairie in said line Northeast corner to William A. Beard's Survey No. 9903 & 9928, thence with Beard's line S. 78 W. 106 poles to a stake in said line; thence N. 31 E. 208 poles to a stake in the line of Clark's said survey, thence with said line N. 78 E. 54 poles to the beginning.

Virginia Howard
William Williams C.C.
John Peter M.k.r.

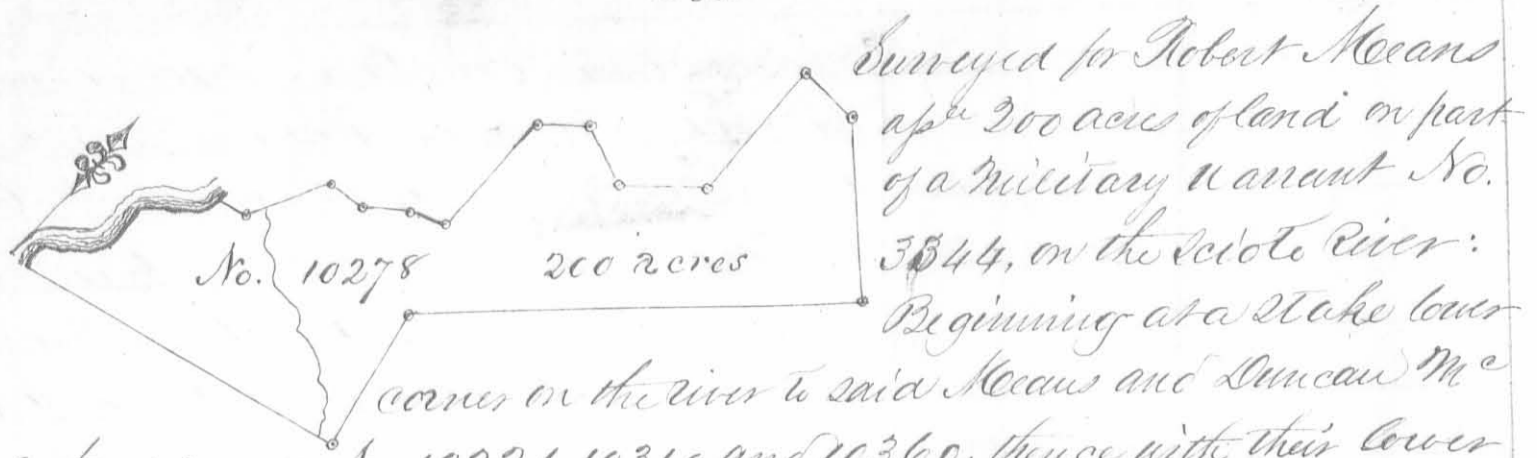
Walter Dun D.S.
Jan. 25. 1825
May 24. 1826



Surveyed for the representatives of David Atkins dec'd 500 acres of land on two Military warrants No. 6009 and 6019 on Rush Creek; beginning at a lynn buckeye and two ironwoods northeast corner to Morrow and Taylors Survey No. 9937 and Northwest corner to the representatives of New land. Madisons survey No. 9938, thence N. 78 E. 400 poles crossing the Creek at 310 poles to two beeches and a sugar tree northeast corner to Madisons said survey and Northwest corner to Taylor and Pierces survey No. 10060, thence N. 12 W. 100 poles to two beeches; thence S. 78 W. 100 poles to three ironwoods a white walnut and hackberry; thence N. 12 W. 60 poles to two beeches and an ash; thence S. 78 W. 300 poles to a water beech and two oak, thence S. 40 W. 250 poles to two beeches in the line of Morrow and Taylor's said survey, thence N. 78 E. 256 poles crossing the Creek at 48. 77. 90. 103. 114 and 127 poles to the beginning.

Francis Thompson
David McArthur C.C.
Matthew Bonner M.k.r.

Thomas S. McArthur D.S.
November 6th 1821
February 12th 1822



Surveyed for Robert Means
ap^{pr} 200 acres of land on part
of a military warrant No.
3844, on the Scioto River:

Beginning at a stake lower
corner on the river to said Means and Duncan Mc
Arthurs survey No. 10221, 10310 and 10360, thence with their lower
line N 78 E. 190 poles crossing a branch at 112 and on at 181 poles to
three beeches two of them down lower back corner to said survey; thence
N 12 W. 80 poles to a blue ash and three small beeches; thence N 45 E
237 poles crossing several drains to a stake; thence N 45 W. 98 poles to
two elms on the edge of a swamp; thence West 30 poles to two red oaks
and an ash near the edge of the prairie; thence with the prairie South
82 poles to a sugar tree; thence S. 50 W. 46 poles to two sugar trees and a
black walnut; thence N. 70 W. 32 poles to two ashes and a maple; thence
S. 50 W. 28 poles to two elms and a maple; thence South 72 poles to a blue
ash and buckeye; thence S. 72 W. 20 poles to a white ash; thence S. 51 W
27 poles to two buckeyes, a beech, hickory and horn beam; thence West
20 poles to two buckeyes and a thorn; thence S. 29 W. 49 poles crossing a
branch to a hack berry and buckeye; thence S. 75 W. 15 poles to a honey
locust, two buckeyes and a thorn on the bank of the river; thence up the
river and winding thereon N. 20 W. 11, S. 50 W. 34, S. 7 E. 26, S. 54 W. 35 crossing a
branch at 11 poles S. 8 W. 14 poles to the beginning.

Daniel Colvin 3
Noah Druett 3 1/2
Peter McArthur M.k.r.

Thomas J. McArthur J.S.
January 27th 1821.
March 29th 1821.

Surveyed for John Evans Apeu and William Withers 101 2/3
acres of land on part of two military warrants viz: Evans
70 acres on No 6526 and Withers 31 2/3 acres on No 6539
on the waters of Rush creek; beginning at two sugar trees and a beech
south west corner to Duncan McArthurs survey No 10631 thence with
the line thereof N. 78 E 200 poles crossing a deep drain at 85 poles and
a road at 114 poles to a small beech corner to John Moores survey
No. 9910, thence with a line thereof S. 12 E. 82 poles to a stake corner
to said survey; thence with another line thereof S. 78 W. 200 poles cross-
ing the road to a stake westerly corner to Moores said survey in the east line of
survey No. 9909 thence with said line N 12 W 82 poles to the beginning.

No	12536
101 2/3	acres

John McCoy 3
Samuel Supler 3 1/2
John B. Magnus M.k.r.

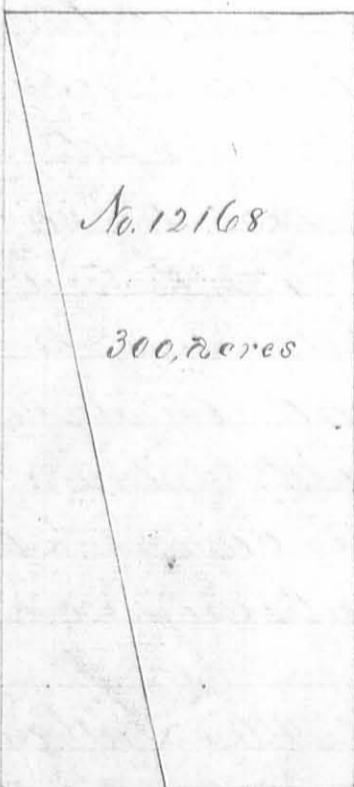
E. P. Kendrick J.S.
June 10th 1831
February 1st 1834

Surveyed for John Evans *ap^{pe}* 400 acres of land on part of a Military Warrant No. 6526 on Mad River; beginning at a stake in a prairie north easterly corner to Samuel Finleys survey No 4493 & 4525 thence with his line S. 70 N. 96 poles crossing a branch to two small box oaks and a black oak corner to Walter Duns survey No. 10853, thence with his line N. 24 E. 185 poles crossing a branch to three large white oaks north east corner to said survey and north westerly corner to said Duns survey No. 9592, 9618 & 10075, thence with Duns line S. 80. E 300 poles crossing Mad River to a hickory corner to said survey; thence with another line thereof and the line of said Duns survey No. 9878 of 302 acres S. 20. E 262 poles crossing two branches to two white oaks and a black walnut corner to said survey; thence with another line thereof S. 70 N. 207 poles to three black oaks from one root on the line of Finleys said survey, thence with said line N. 20 N. 240 poles crossing a spring branch and Mad River to the beginning.

Charles Kessler
John Guthridge

Solomon McCulloch M. L. R.

Duncan W. Arthur D. S.
March 10th 1823
June 18th 1823



Surveyed for Samuel Smith *ap^{pe}* 300 acres of land on part of a Military Warrant No. 6519 on the waters of Big Miami; beginning at two hickories north west corner to the representatives of Michael Rudolphs survey No 9902; thence S. 78 N 87 poles to two white oaks and a hickory in Roberts line north west corner to Dunand Bayles survey No. 10122, 10248 & 10249; thence with Roberts line N. 24 30' N. 410 poles to two white oaks and an ash in said line southwest corner to Isaac Gardner survey No. 12052; thence with his line N. 78. E 181 poles to two ashes and two hickories southeast corner to Gardner and north west corner to Rudolphs said survey; thence with Rudolphs line S 12 E 400 poles to the beginning.

George Henry
James Henry
Benjamin McCulloch M. L. R.

Thomas S. Arthur D. S.
January 4th 1823
February 21st 1823

No. 12075

55, acres

Surveyed for Hughes Woodson 55 acres of land on part of a military warrant No. 1757 on the waters of Hartys Creek: Beginning at a hickory and two Jack oaks easterly corner to Joseph Chambers survey No. 7399 in the line of Johnston and Grahams survey No. 7245; thence with their line S. 60 E 66 poles to a stake in a prairie northerly corner to said Chambers survey No. 7400; thence with his line S. 30 W. 134 poles to a stake in a prairie westerly corner to said survey; thence N. 60, W. 66 poles to a stake in a prairie; thence N. 30 E. 134 poles passing the southerly corner of said Chambers survey No. 7399. and with his line to the beginning.

Meoses Mitchell

Samuel Mitchell C.C.

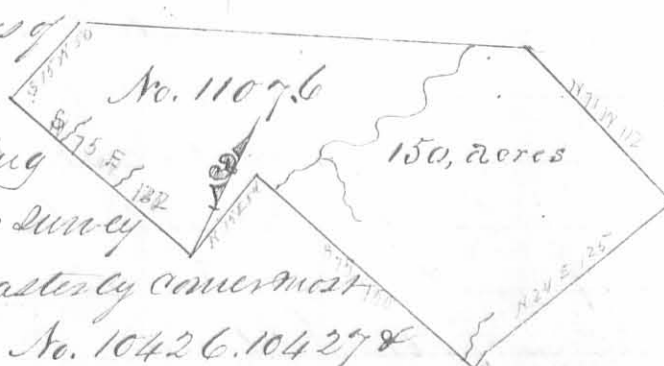
James Poal M.k.r.

James Galloway Jun. D.S.

March 6th 1823

June 7th 1823

Surveyed for James Acron 150 acres of land on part of a military warrant No. 104 on the waters of Mead River; beginning at a beech in the line of Samuel Davis survey No. 3216 N. 75 W 150 poles from his easterly corner most westerly corner to Walter Duns survey No. 10426. 10427 & 10441; thence with Duns line N. 15 E. 54 poles to two beeches corner to said survey; thence with another of his lines S. 75 E. 150 poles crossing a branch at 14 and one at 138 poles to two beeches and a sugar tree corner to said survey; thence N. 15 E. 12 poles to two beeches a sassafras and red oak corner to said survey; thence N 24 E 120 poles to two beeches and an ash; thence N. 71 W. 112 poles to a sugar tree corner to Robert Mecons and McArthurs survey No. 4948 & 9423; thence with their line S. 65 W. 232 poles crossing a branch to a sugar tree red elm and small black walnut in said line north easterly corner to Duncan McArthurs survey No. 9876; thence with his line S. 15 W 50 poles to two sugar trees and two beeches northerly corner to Davis said survey, thence with his line S. 75 E 122 poles crossing a drain at 30 and at 68 poles to the beginning.



James Marmont

Robert Marmont C.C.

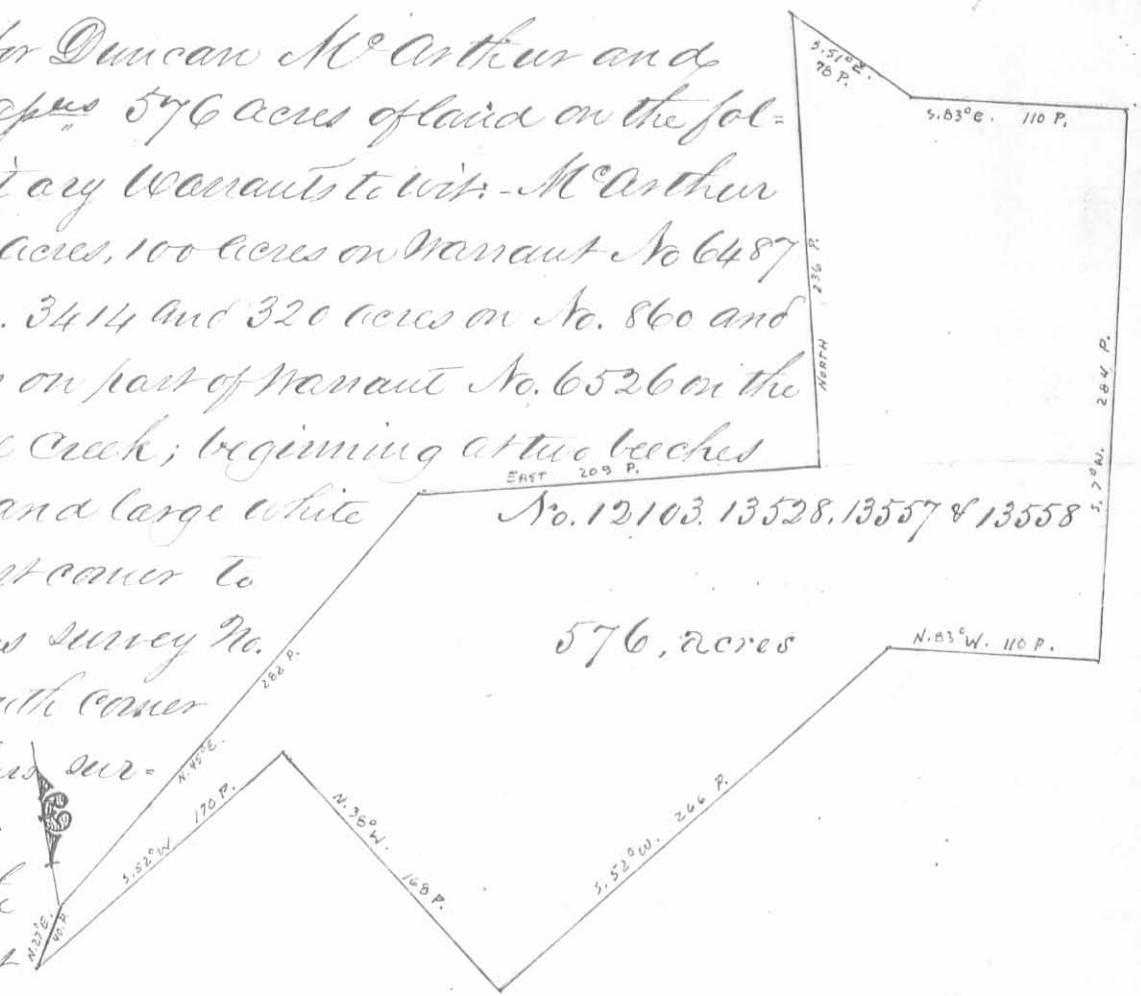
Aaron Brown M.k.r.

Allen Latham D.S.

October 24th 1822

June 28th 1823

Surveyed for Duncan McArthur and John Evans ^{aprs} 576 acres of land on the following Military Warrants to wit: - McArthur 493 acres, 100 acres, 100 acres on Warrant No 6487 73 acres on No. 3414 and 320 acres on No. 860 and Evans 83 acres on part of Warrant No. 6526 on the waters of Mill Creek; beginning at two beeches a sugar tree and large white oak south east corner to Robert McCaus survey No. 5091 and south corner to said McCaus survey No. 13432; thence with the line of the last



mentioned survey N. 45° E. 282 poles crossing two branches to a stake Elm, Lym and two hickories, an easterly corner to said survey No. 13432, thence east 209 poles crossing a branch to two beeches and an ironwood; thence North 236 poles passing the S.E. corner of Strother Jones survey No 4210 and with the east line thereof to a stake in the line of Robert Vance's survey No. 4995, thence with said line S. 51° E. 78 poles to a stake corner of said survey thence with another line of said survey No 4995 S. 83° E. 110 poles to two sugar trees and a buckeye North west corner to James Galaway's survey No. 4813 thence with the line of Galaway's said survey S. 7° N. 284 poles crossing two branches to a lym ash and buckeye, S. W. corner to said survey in the line of Tuttle Hudson's survey No. 6232, thence with said line N. 83° W. 110 poles to three sugar trees westerly corner to said survey and north corner to Richard Calls survey No 4810, thence with the line thereof S. 52° W. 266 poles to a hickory, sugar tree, walnut and buckeye west corner to said survey and east corner to said Calls survey No 4809; thence with the line of the last mentioned survey N. 38° W. 168 poles to two sugar trees and a buckeye north corner thereof, thence with another line of the same, S. 52° W. 170 to two buckeyes and a sugar tree west corner to said survey, thence N. 27° E. 40 poles to the beginning.

Aspen Garwood 3
 John Garwood 3 C.O.
 Samuel Duffler A.K.R.

C.P. Kendrick D.S.
 September 13. 1834
 September 15. 1834

Surveyed for the heirs
 of Duncan McArthur
 505 acres of land
 on part of four Mil
 itary Warrants to
 wit. 100 acres on No
 6487. 73 acres on
 No. 3414. 320 acres
 on No. 860 and 12 acres
 on No. 5336 on the
 waters of Mill Creek; beginning
 at two beeches, a sugar tree and large
 white oak southeast corner to Robert
 McCaus survey No 5091 and south corner to
 Duncan McArthur's survey No. 13432 thence with the line of the last
 mentioned survey N. 45. E. 282 poles crossing two branches to a stake
 elm, lynn and two hickories an easterly corner to said survey No. 13432
 thence East 209 poles crossing a branch to two beeches and an iron wood
 thence N. 236 poles passing the southeast corner of Strother Jones
 survey No 4210 and with the east line thereof to a stake in the line
 of Robert Vance's survey No. 4995, thence with said line S. 57 E 78 poles
 to a stake corner to said survey; thence with another line thereof S. 53
 E. 110 poles to two sugar trees and a buckeye northwest corner to James
 Galloway's survey No. 4813; thence with the line of Galloway's said
 survey S. 7 N. 284 poles crossing two branches to a lynn ash and
 buckeye south west corner to said survey and in the line of Tuttle
 Hudsons survey No. 6232; thence with said line N. 83 N. 110 poles
 to three sugar trees westerly corner to said survey and north cor-
 ner to Richard Calks survey No. 4810, thence with the line thereof
 S. 52 N. 266 poles to a hickory, sugar tree, walnut and buckeye west
 corner to said survey and east corner to said Calks survey No. 4809
 thence with the last mentioned survey N. 38 N. 168 poles to two sugar
 trees and a buckeye north corner thereof, thence with another line
 of the same S. 52 N. 170 poles to two beeches and a sugar tree west
 corner to said survey; thence N. 27 E. 40 poles to the beginning.

Aaron Garwood J.
 John Garwood J. C. C.
 Samuel Exler M. R.

E. P. Kendrick D. S.
 February 27. 1843
 February 28. 1843

No. 12017
200, acres

Surveyed for Archibald Gordon 200 acres of land on a Military warrant No. 5508 on the waters of Rush Creek: Beginning at a stake north west corner to Alexander Parkers survey No. 9958 in the line of Sawyers survey No. 10239, thence S. 12 E 246 poles to two beech in the line of Parker, corner to Atkins survey No 10387 & 10388, thence with a line of said survey S. 78 W. 134 poles to an ash and beech; thence N. 12 W. 246 poles to a hickory & elm in the line of Sawyers said survey; thence N. 78 E 154 poles to the beginning.

Levi D. Sharp
Wilkieh Roselrag
Mason S. Thompson. M.k.r.

Thos J. McArthur D.S.
March 25. 1823
November 5. 1824

No. 12074
100, acres

Surveyed for John A. Reid 100 acres of land on a military warrant No. 6488 on the waters of the big Miami Beginning at a sugar tree, ash and red oak north east corner to Robert Means survey No 9973 in the line of Duncan McArthur survey No 9974 for 390 acres; thence with said McArthur line N. 12. W 116 poles to a sugar tree beech and dogwood north west corner to his survey and south east corner to Ephraim Raephs survey No. 9996, thence with said Raephs line S. 78. W. 140 poles to a stake in said line; thence S. 12 E. 116 poles to a stake in the line of said Means survey, thence with said Means line N. 78. E. 140 poles to the beginning.

George Henry
James Henry
Benjamin McCulloch M.k.r.

Thomas J. McArthur D.S.
March 20. 1824
Decemr 3. 1824

No. 12485
60, acres

Surveyed for Joseph Spencer 60 acres of land on part of a military warrant No. 6567 on the waters of the big Miami; beginning at two black oaks and red oak and sugar tree south west corner to William Millers survey No. 3324 in said line, thence with said line N. 20. W. 342 poles to a stake in the Greenville Treaty line; thence with said line N. 78. E. 58 poles to two hickories, an elm and white oak in the line of said Millers said survey; thence with said line S. 10. E. 340 poles to the beginning.

Richard Baldock
George Sroufe
Moses Collier M.k.r.

James Callaway D.S.
Oct. 11. 1824
March 25. 1825

Surveyed for James Gallaway Junr Ap^l William Schooler and Joshua McQueen; 523 acres of land in part of five Military Warrants; Gallaway 213 acres 100 acres on No 712, 80 acres on No 5812, 33 acres on No 6463; Schooler 250 acres on No 6499 and McQueen 60 acres on No 6578 on the waters of Darby Creek; beginning at two sugar trees and a beech easterly corner to Thomas Sears survey No 545 and northerly corner to said Sears survey No 4943, thence with the line of survey No. 545 N. 38 W. 400 poles crossing a branch to a stake in a field northerly corner to said survey in the line of Benjamin Roifeau's survey No 4811, thence with said line and corner thereof N. 52 E 195 poles crossing a branch to a hickory red oak and sugar tree; thence S. 38 E 430 poles to beeches a dogwood and two iron woods; thence S. 52 W. 195 poles crossing a branch to a stake in the line of said Sears survey No 4943; thence with said line N. 38 W. 30 poles to the beginning.

Samuel Warner 3
 David Warner 3 C.C.
 Joshua McNaide M.k.r.

James Gallaway Junr J.S.
 March 12^o. 1824
 May 15^o. 1824

Surveyed for John Shanks and Joshua McQueen 200 acres of land on part of two Military Warrants; Shanks 100 acres on No 6181 and McQueen on No 6578 on the waters of Mill creek; beginning at a red oak, beech and sugar tree south east corner to the Representatives of Sewelling Jones survey No. 4815; thence N. 83 W 260 poles crossing a branch at 6 and several times afterwards to two beeches, a dogwood, horn beam and ironwood in said line corner to Tuttle Hudsons survey No. 6232; thence with Hudsons line and course thereof S. 38, E. 366 poles to two sugar trees and a beech in the line of Richard Lee's survey No. 3448; thence with his line N. 7 E, 260 poles crossing a branch at 238 poles to the beginning.

Samuel Warner 3
 David Warner 3 C.C.
 Joshua McNaide M.k.r.

James Gallaway Jr J.S.
 January 16^o. 1824
 April 5^o. 1824

No. 12388 & 12401

200, acres

Surveyed for William Mithers 280 acres of land on part of a Military warrant No. 6539 on Darby Creek and Beaver run; beginning at two sugar trees East corner to Robert Paver's survey No. 3680 and in the line of Richard Stephens survey No. 3163; thence with said line and corner there of N 52 E, 500 poles crossing the creek at the mouth of Beaver run to an elm and two beeches north westerly corner to Charles Symmies entry No. 158, thence N 84 W, 285 poles crossing flat branch and Beaver run to a stake thence N. 38 W 60 poles to a stake in the lower line of Levi Hollingsworth's survey No. 3160; thence with said line S 52 W, 95 poles to two beeches southerly corner to Hollingsworth's said survey in the line of Powers said survey; thence with said line S. 38 E. 260 poles crossing the creek or what is now called mill branch to the beginning.

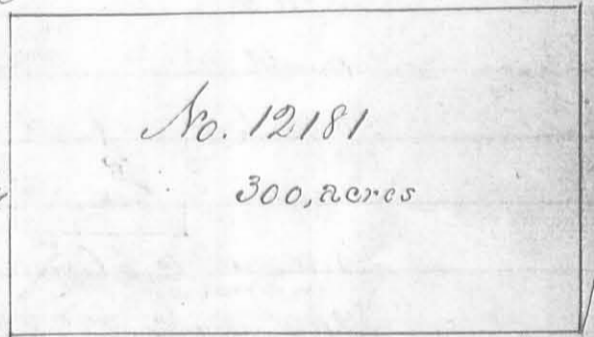
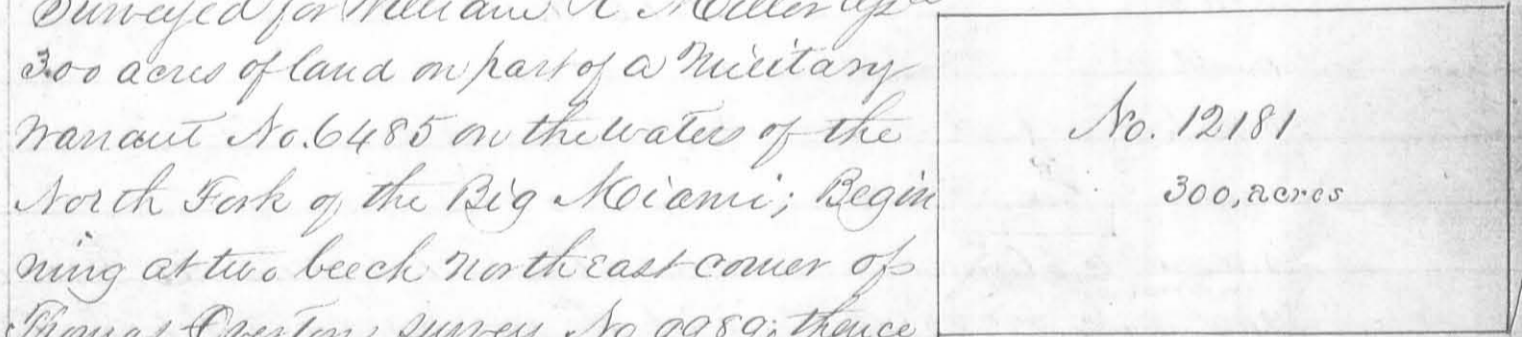
William Bishop
 Medlock Stokes
 Joseph Garwood M.k.r.

Duncan McArthur D.S.
 June 17th 1823
 June 19th 1823

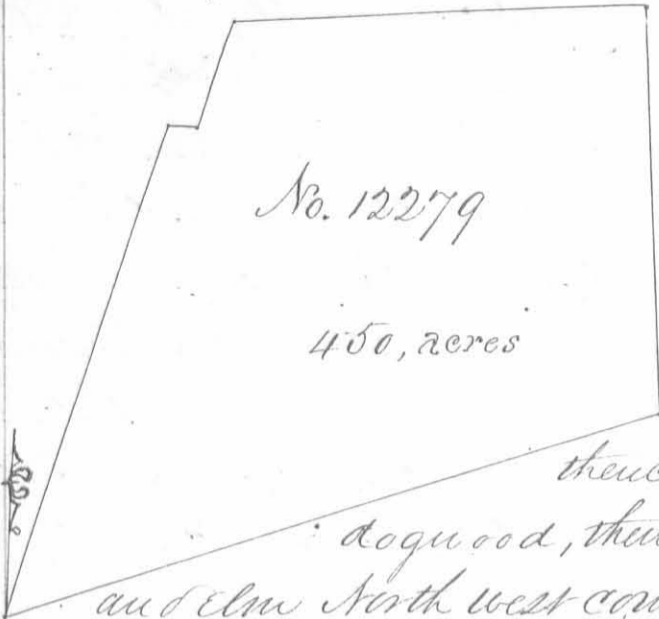
Surveyed for William R. Miller 300 acres of land on part of a Military warrant No. 6485 on the waters of the North Fork of the Big Miami; Beginning at two beech northeast corner of Thomas Overton's survey No 9989; thence S. 78 W. 300 poles to three beech northwest corner to said survey and corner to Nathaniel Burwells Easterly survey No 9988, thence N. 12 W 160 poles to an ash; thence N. 78 E 300 poles in the line of Fowler, Taylor and Gambles survey No 9998, thence S. 12 E 160 poles to the beginning.

Levi D. Sharp
 Nikiak Rosebrag
 Nelson S. Thompson M.k.r.

Thomas S. McArthur D.S.
 March 27th 1823
 September 4th 1824

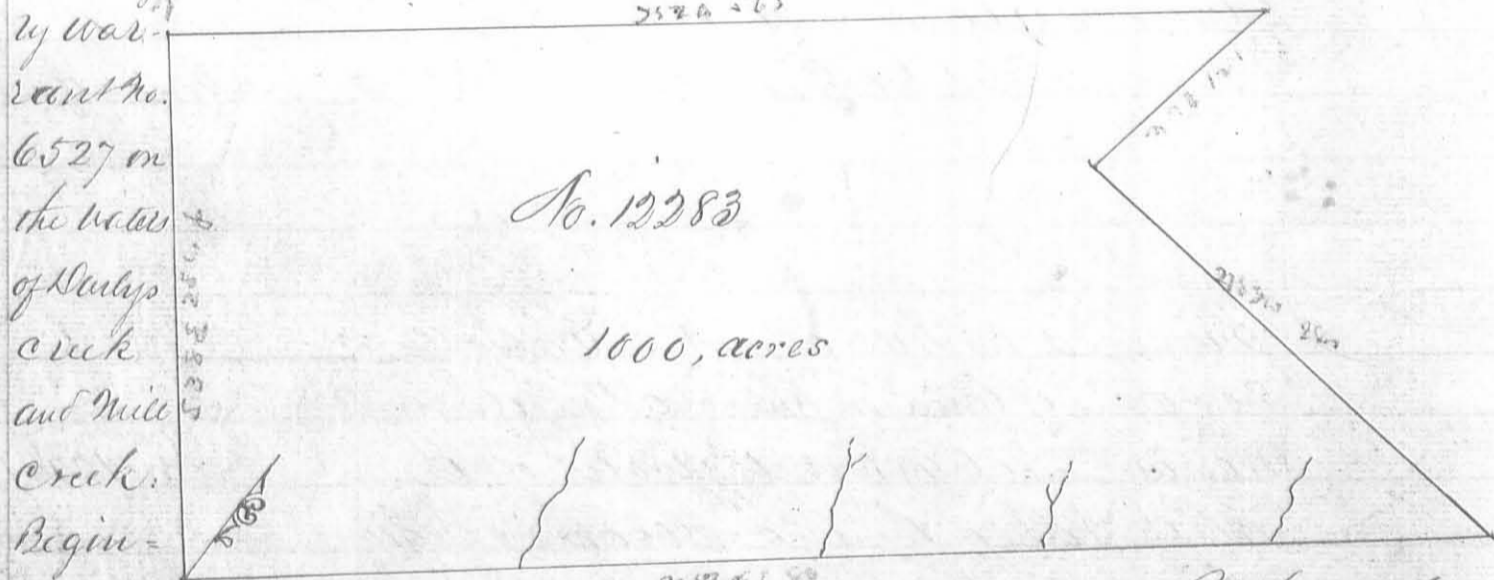


Survey of George Lambert 450 acres of land on part of a Military warrant No. 6550 on the waters of Big Miami; beginning at a lynn, beech, sugar tree and ash north west corner to St Maples survey No 12178 in the line of Dun and Darsons survey No 12072, thence N 9 E 268 poles to a stake; thence N 78 E 14 poles to two blue ash and a cherry; thence N 9 E 58 poles to two beech and a dogwood, thence S 12 E 10 poles to a beech, sugar tree and elm North west corner to Saylor and Hawkins survey No. 11015; thence S. 63 W. 357 poles to the beginning.



Thomas J. McArthur D.S.
 December 14th 1823
 November 6. 1824

Survey of Young Milkewan 1000 acres of land on part of a Military warrant No. 6527 on the waters of Sullys creek and Mill Creek. Beginning at two lynn and a sugar tree westerly corner to Richard Surveys survey No. 12282, thence with the line of said survey and passing the North corner thereof N 52 E, 680 poles crossing several small branches to two black ashes and a white ash and beech in the line of Richard Sees survey No 3448 thence with said line N. 83. W. 282 poles to a sugar tree beech and hickory south west corner to Sees said survey; thence with another line thereof N. 7 E. 120 poles to two sugar trees; thence S 52 W 565 poles to two elms and a beech; thence S. 38 E. 284 poles to the beginning.



John Inskip
 Jefe W. Gamwood C. C.
 Thomas J. McArthur M. A. R.

Quincey McArthur D. S.
 Oct 26. 1824
 Nov 23. 1824