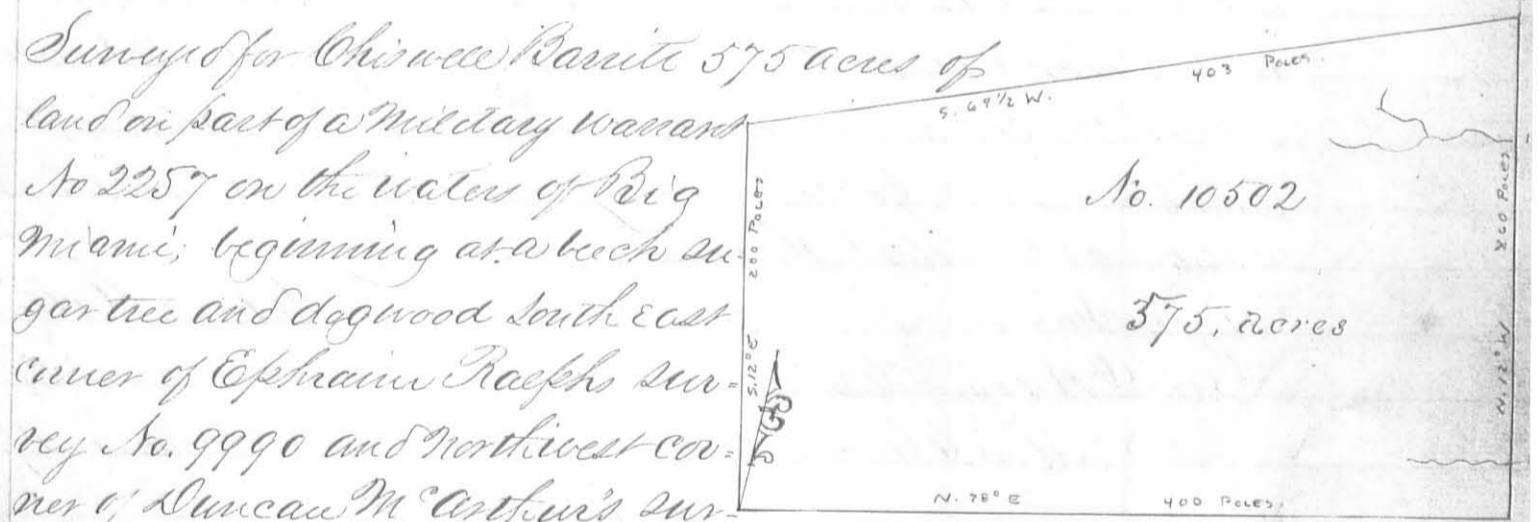


Surveyed for Duncan McArthur
 approx 410 acres of land on part of
 a Military Warrant No 3477
 on the waters of Rush Creek: Begin-
 ning at a small buckeye sugar
 tree and walnut on the west

bank of the creek northeast corner to Bondleton and other survey
 No 9909 and southwest corner to Richard Stimmens survey No 10041
 thence with Stimmens line N. 78. E 400 poles crossing the creek at 6
 a drain at 20 the Sandusky road at 110 a branch at 266 and a
 drain at 270 poles to three beeches southeast corner to Stimmens
 said survey; thence S. 12. E. 164 poles to three beeches; thence S 78 W
 400 poles crossing several drains and the road at 286 poles to two
 sugar trees and a beech, thence N. 12 W 164 poles crossing the creek
 three times the beginning.

George M Collock
 George Henry B.C.C.
 Edward Nicgus M.R.

Thomas M Arthur D.S.
 June 7th 1821
 July 20th 1821



Surveyed for Chimwee Parritt 375 acres of
 land on part of a Military warrant
 No 2257 on the waters of Big
 Miami; beginning at a beech su-
 gar tree and dogwood south east
 corner of Ephraim Raephs sur-
 vey No. 9990 and Northwest cor-
 ner of Duncan McArthur's sur-
 vey No. 9974; thence with his line N. 78. E 400 poles to an Elm ma-
 ple and ash northeast corner to survey No 9974 and south-
 west corner to survey No. 9991; thence with a line of said survey
 N. 12 W. 260 poles crossing a drain at 25 and one at 196 poles
 to a beech and sugar tree; thence S. 69 1/2 W 403 poles to an ash
 sugar tree and beech in the line of said Raephs survey; thence
 with his line S. 12. E 200 poles to the beginning.

Saml D Sharp
 Alpheus Rosebrog B.C.C.
 Wilson S Thompson M.R.

Samuel Forrer D.S.
 December 5th 1820
 December 12th 1820

Surveyed for John Evans
 up^{er} 1300 acres of land on
 part of two Military War-
 rants 1220 acres on No. 6418
 and 80 acres on No. 6417 on
 Mad River: Beginning at a
 stake Northwest corner to said
 Evans Survey No. 10423, thence
 with his upper line S. 75. E
 400 poles crossing a road at
 172 and Mad River at 304
 a branch at 356 and a small branch
 at 362 poles to two beeches and a white
 ash, Northeast corner to said survey, thence
 N. 31 $\frac{1}{2}$ E 77 poles to two beeches and a lynn;
 thence N. 16. W. 510 poles crossing a branch at
 12 one at 118 a deep drain at 278 one at 306 a road
 at 390 and a small branch at 466 poles to a white ash red elm, small
 blue ash and two small white walnuts; thence S. 74 N. 462 poles, cross-
 ing a small branch at 92 and East fork of Mad River at 106 a drain
 at 144, Mad River at 270 and a drain at 390 poles to two sugar trees
 a beech and poplar, all small, on the side of a deep drain; thence S. 16
 E. 355 poles to a poplar and white oak; thence N. 74 E. 65 poles, crossing
 a drain at 27 poles to the beginning.

Simon Hager

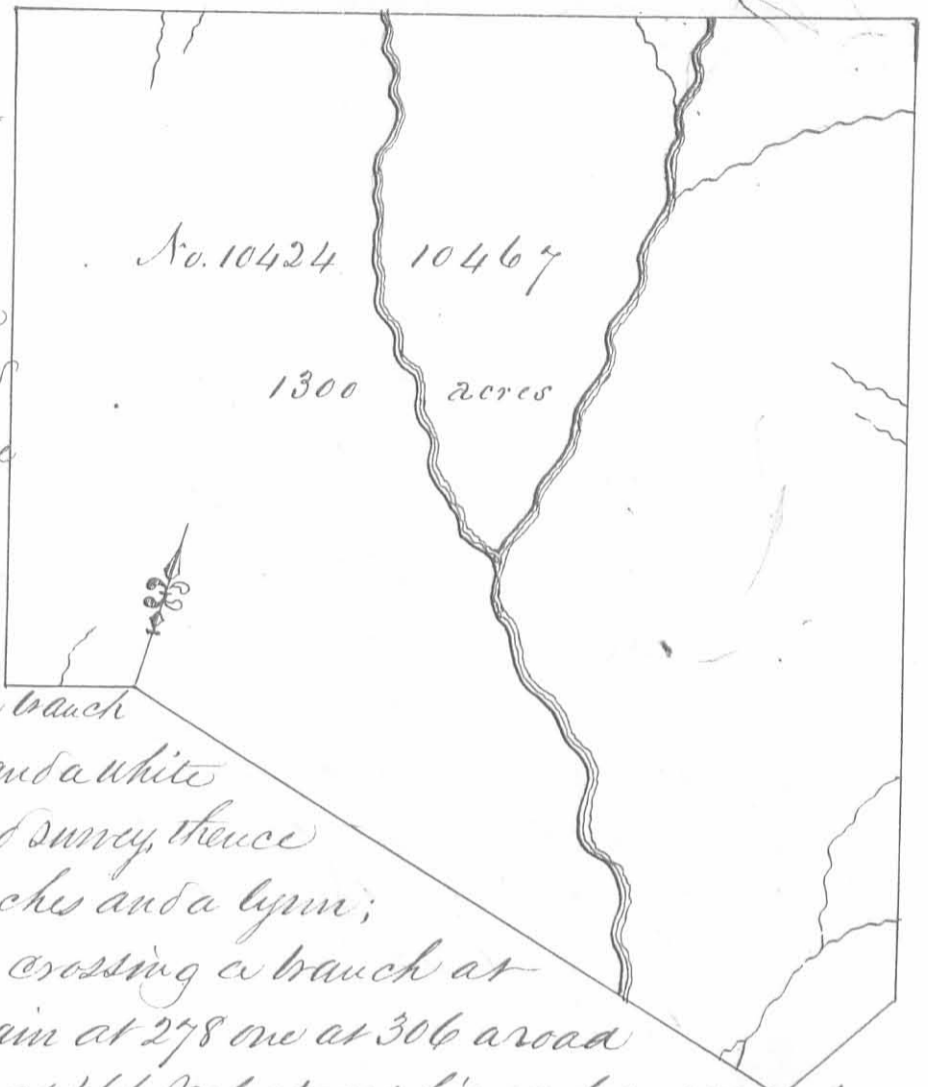
Levi D. Sharp 3 C.C.

Amer Chapman M. h. r.

David Collins D. S.

November 17th 1820

January 17th 1821



No. 121024

12163

150, acres

Surveyed for Duncan McArthur and John Evans up^{er} 150 acres of land on part of
 two Military Warrants, McArthur 83 acres on No. 629 and Evans 67 acres on No. 6526
 on the waters of Cedar fork of Scioto Branch Creek; beginning at a dogwood and
 elm southwest corner to J. M. Woodson and Robert and Samuel Woodson's survey
 No. 7367 and Northeast corner to Robert Means survey No. 9157 thence with
 the line of Woodson's said survey East 100 poles crossing a small branch
 to two white oaks corner to George Handy and Bauman's survey No. 9158
 thence South 240 poles to a stake corner to their said survey in the
 line of Benjamin Hough's survey No. 8229. 8242 & 8797, thence with said line
 West 100 poles crossing a small branch to a white oak southeast corner to Means said sur-
 vey; thence with his line North 240 poles to the beginning.

David Newman

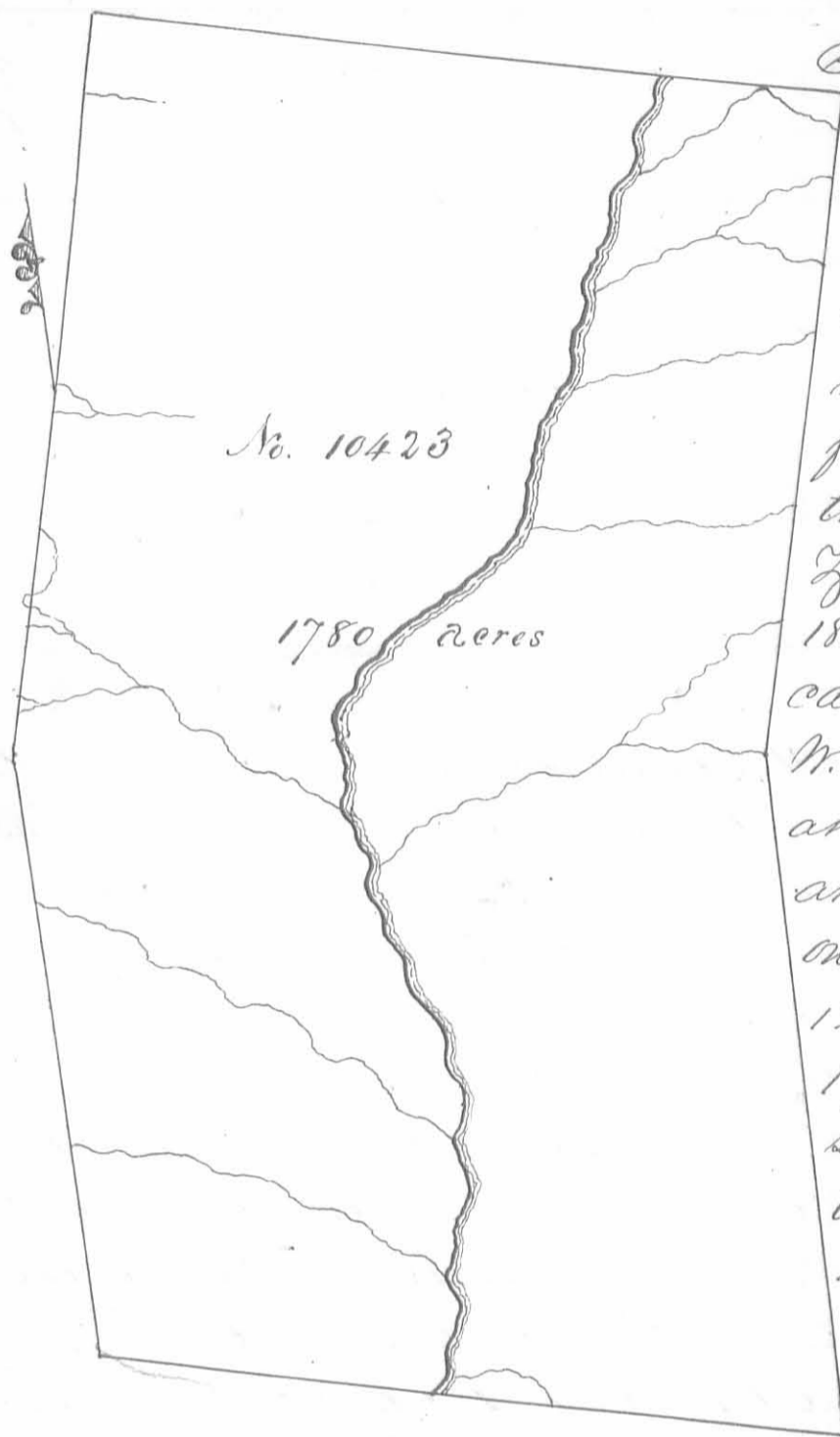
Jacob Cox 3 C.C.

John Key M. h. r.

Duncan McArthur D. S.

May 15th 1823

June 18th 1823



Surveyed for John Evans Apr
1780 acres of land on part
of a Military warrant No.
6418 on Mad River: Begin-
ning at two beeches and a
hickory N. 75. W. 204 poles
from the southwest corner of
the house in which Isaac
Zane dec^d lived in the year
1812 and until his death, now
called Zanesfield; thence S. 12
W. 200 poles crossing a branch
at 8 and at 40, a large branch
at 71 one at 96, ~~and~~ one at 102
one at 106, one at 112, one at
128, one at 164 and one at
174 poles to three beeches, thence
south 320 poles crossing a
branch at 72 and one at
204 poles to a small jack
oak; thence S. 75. E. 400
poles crossing a road at
40. Mad River at 182 and

a drain at 240 poles to two small white oaks; thence N. 320 poles to
a sugar tree and hickory marked about 1817; thence N. 15. E. 400
poles crossing a branch at 48, a road at 104, a branch at 120
a drain at 180, a road at 192, a branch at 276 a drain at 316
one at 356 and a branch at 384 poles to two beeches and a white
ash marked about 1817; thence S. 75 W. 400 poles, crossing a
branch at 38 one at 44, Mad River at 96 and a road at 228
poles to a stake on the side of a hill; thence S. 15. W. 200
poles crossing a branch at 46 and 192 poles to the beginning

Simon Hoager

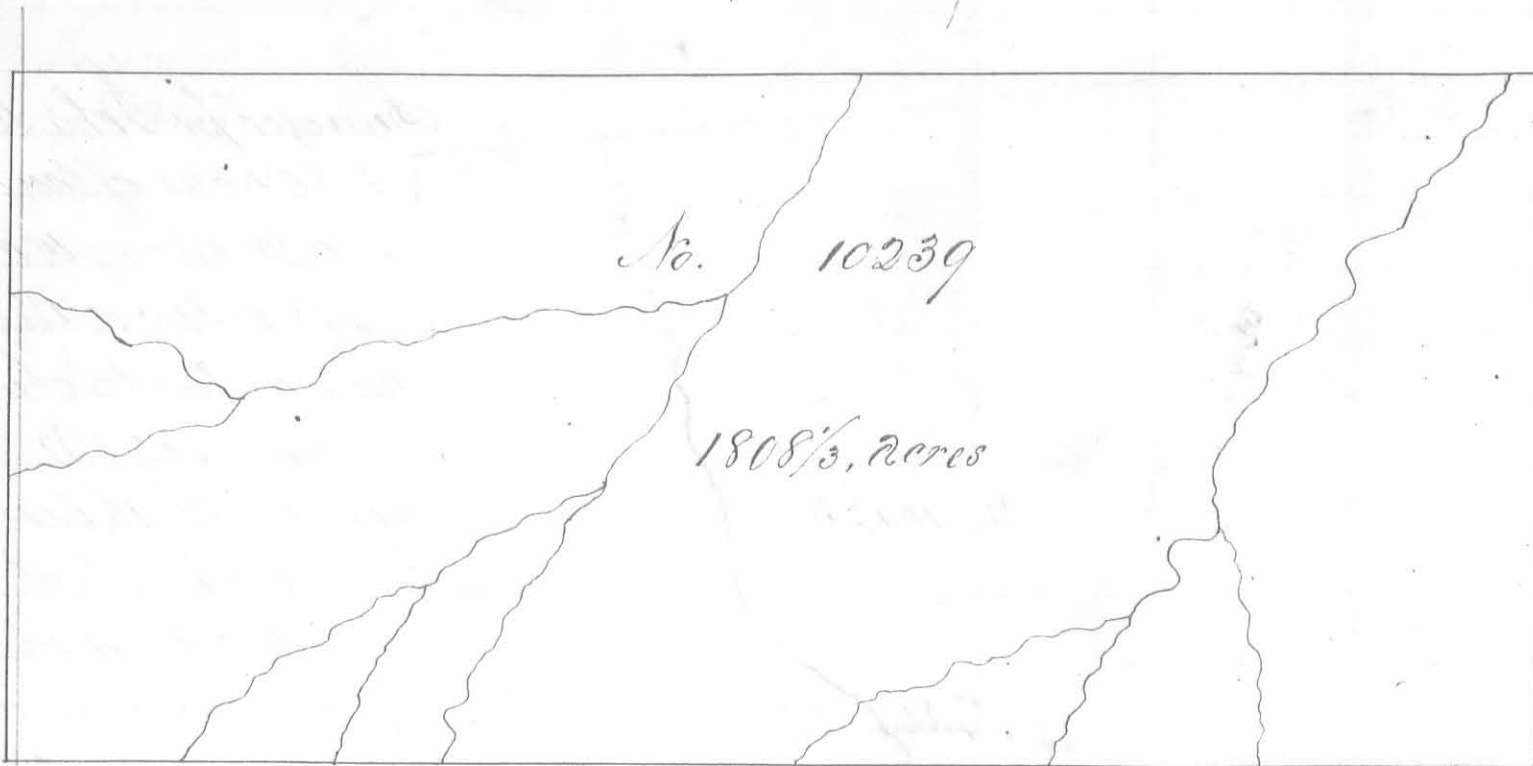
Levi D. Sharp E. C. C.

Abner Chapman M. K. R.

David Collins D. S.

October 17th 1820

January 7th 1820

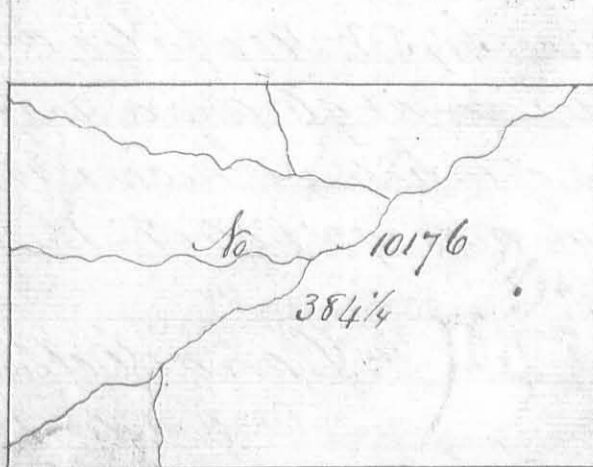


Surveyed for Nathaniel Sawyer of 1808 $\frac{1}{3}$ acres of land on part of three Military Warrants, 1333 $\frac{1}{3}$ acres on No. 6285, 100 acres on No. 6277 and 375 acres on No. 6327 on the waters of Scioto; beginning at three red elms and two buckeyes Northwest corner to Robert Means survey No. 9959 and Northeast corner to Alexander Parker's survey No. 9958, thence N. 12. W. 363 poles to two sugar trees and an iron wood in the line of Maria Williams southwest survey No. 10176; thence S. 78. W. 800 poles crossing a large branch at 10 poles passing the corner of said survey at 260 crossing a large branch at 356 poles to a buckeye and two hickories; thence S. 12 E. 363 poles crossing branches at 127 and at 221 poles to three beeches and an ash southeast corner to Robert Porterfield and others No. 9978; thence N. 78. E. 800 poles crossing branches at 94. 170. 227. 409 543 and at 658 poles to the beginning.

Francis Thompson $\frac{2}{3}$
David McArthur $\frac{3}{3}$

Matthew Baines M.k.r.

Thos. S. McArthur D.S.
November 16th 1821
February 21st 1822

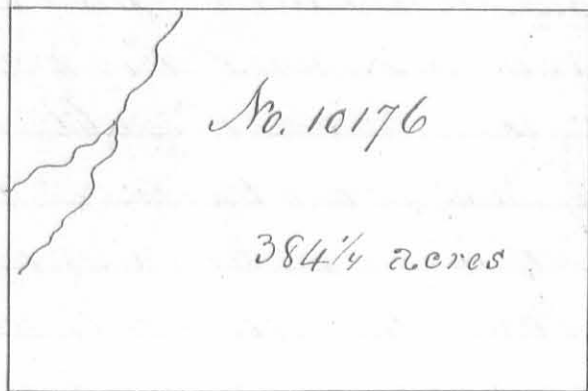


Surveyed for David Williams 384 $\frac{1}{4}$ acres of land on part of a Military Warrant No. 5748 on the waters of Scioto beginning at two lymns from one root and two red elms south east corner to Means and Harris survey No. 10004 and southwest corner to James Malins survey No. 10005, thence S. 78 W. 307 poles crossing a branch at 10 one at 169 and one at 268 poles to a beech and elm; thence S. 12 E. 200 poles crossing a branch at 8 and one at 88 poles to a beech and elm; thence N. 78 E. 307 poles crossing a branch at 88 poles to a beech and sugar tree, thence N. 12. W. 200 poles to the beginning.

David McArthur $\frac{2}{3}$
Francis Thompson $\frac{3}{3}$ 10.6
Charles Furness M.k.r.

Thomas S. McArthur D.S.
November 3rd 1821
February 23rd 1822

Note. Most if not all of this survey is located in Hardin Co.



No. 10176

384 1/4 acres

Surveyed for David Williams 384 1/4 acres of land on part of a Military warrant No. 5748 on the waters of Scioto; beginning at two black walnuts a white ash and sugar tree S. 12 E 400 poles from the southeast corner of Meaus and Harris survey No. 10004, thence S. 78 W 307 poles to a beech and hickory; thence N. 12 W. 200 poles crossing a branch at 58 one at 102 and one at 194 poles to a beech and elm; thence N. 78 E 307 poles crossing a branch at 11 and one at 88 poles to two sugar trees and a beech; thence S. 12 E. 200 poles to the beginning.

David McArthur ³
Francis Thompson ³ C.C.
Charles Sumell M.K.V

Thomas J. McArthur D.S.
November 3rd 1821
February 23rd 1822

Surveyed for John Evans 640 acres of land on part of a Military warrant No. 6477 in the waters of Darby creek and Mead river. Beginning at an ash, white oak hickory and sugar tree. South westerly corner Augustine J Smith's survey No. 3230 and South easterly corner to said Smith's survey No. 3229; thence S. 21 E 320 poles crossing a branch at 98 and a spring branch at 210 poles to two dog woods and



No. 10425

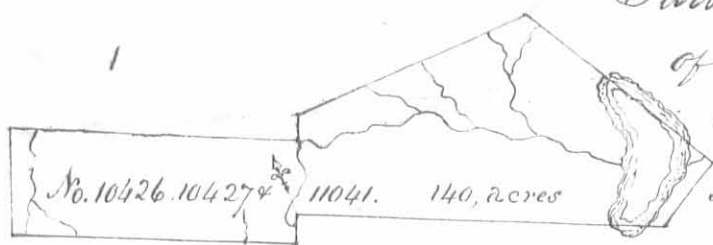
SAME AS No. 3231
on PAGE 132

640 acres

a white oak in the line of survey No. 3684 made for James Calderwoods representatives; thence with said line N. 69 E 320 poles crossing a drain at 240 and one at 292 poles to two hickories with easterly corner to said survey No. 3684, thence N. 21 W. 320 poles crossing a swamp at from 20 to 40 poles, a branch at 148 poles and a drain at 300 poles to an ash, two sugar trees and two mulberries (the mulberry dead) at the south easterly corner of said Smith's survey No. 3230, thence with said line S. 69 W. 320 poles crossing a drain at 56 a small branch at 127 one at 152 and a spring branch at 235 poles to the beginning.

Ross Thomas ³
John Hill ³ C.C.
John Thomas M.K.V

Duncan McArthur D.S.
November 17th 1821
March 7th 1822



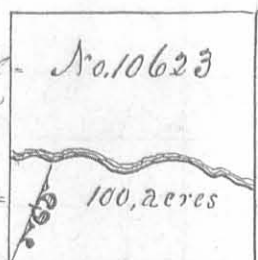
Surveyed for Walter Dun Apr^e 140 acres of land as part of the Military warrants; 74 acres on No. 6124, 56 acres on No 5749 and ten acres on No 5885 on the waters of Head River and Mill Creek.

Beginning at a sugar tree beech and cherry tree north easterly corner to Samuel Davies survey No. 3216, thence N. 15. E. 16 poles crossing a branch to two beeches and a sugar tree north westerly corner to Thomas Threatts survey No. 4661; thence with his line S. 75 E. 193 poles crossing a road from 165 to 183 poles to three blue ashes and a buckeye in said line westerly corner to Perkins and Aldridges survey No. 9371, thence with their line N. 52 E. 39 poles to a black walnut beech and hockberry in said line southerly corner to Thomas Perkins survey No. 9370, thence with said line N. 38 W. 126 poles crossing a drain at 6, the pond from 22 to 72 poles and a steep hollow at 118 poles to an ash and beech westerly corner to said Perkins said survey; thence S. 81. W. 129 poles crossing several drains to two beeches and a sassafras and a red oak thence S. 15. W. 12 poles to two beeches and a sugar tree; thence N. 75 W. 150 poles crossing a branch at 12 and one at 136 poles to two beeches thence S. 15. W. 54 poles to a beech in the line of Davies said survey, thence with said line S. 75 E. 150 poles crossing a branch at 8 and a drain at 130 poles to the beginning.

James Mearmont
Robert Mearmont C. C.
Aaron Brown M. k. r.

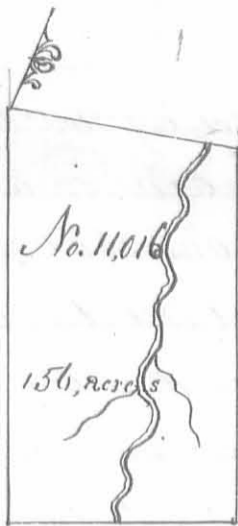
Walter Dun, D. S.
August 28th 1822
August 30th 1822

Surveyed for William Scott Apr^e 100 acres of land on a Military warrant No. 6341 on Cash Creek a branch of Scotts beginning at a stake south east corner to Robert Green's survey No. 10945 in the line of James Benovichs entry No. 9918 thence N. 78 E. 122 poles to two buckeyes a sugar tree and beech, thence N. 12 W. 133 poles crossing the creek at 43 poles to two ashes & a beech thence S. 78 W. 122 poles to a stake northeast corner to said Green said survey, thence with his line S. 12 E. 133 poles crossing the creek to the beginning.



Levi D. Sharp
Nehemiah Rosebrog C. C.
Wilson L. Thompson M. k. r.

Thos. A. McArthur D. S.
Oct. 4th 1824
Dec 4. 1824

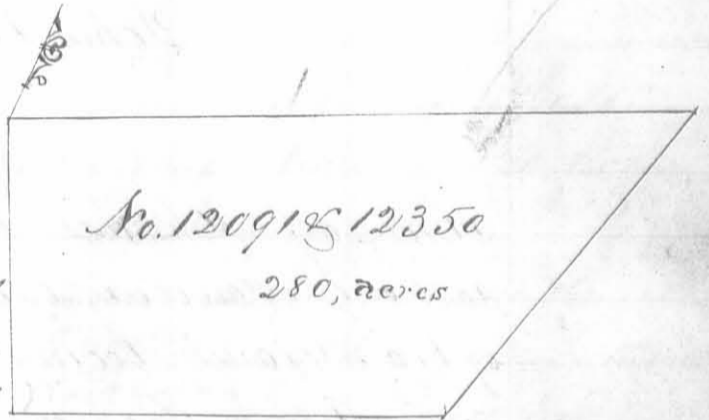


Surveyed for Charles Scott 156 acres of land in part of a military warrant No 5436 on Rush Creek; beginning at two ash and two Sugar trees northeast to Layton Van-crys survey No. 3320; thence with his line S. 10 E 218 poles to a lynn, large ash & two sugar trees Northwest corner to Green & Hubbard's survey No. 7102; thence with his line N. 80 E 120 poles crossing Rush Creek at 76 poles to a sugar tree two beeches & a hackberry; thence N. 10 W. 198 poles to an ash & two elms, thence S. 88 W. 123 poles crossing the creek to the beginning.

Hilkeah Roubagh
Robert Roubagh C.C.
P. N. White M. K. r.

James Taylor D.S.
Decem^r 15. 1823
Novem^r 16. 1824

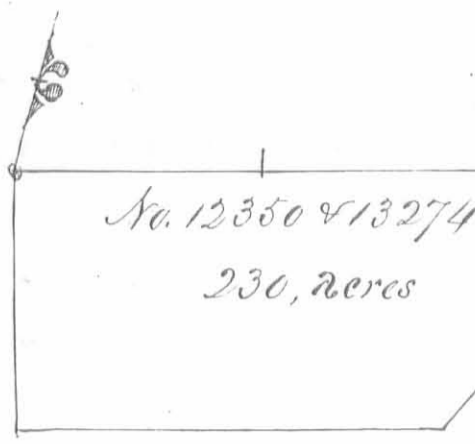
Surveyed for James Galloway Jr
Apr 280 acres of land on a milita-
ry warrant No. 3236 and 18 acres
on No. 5812 on the waters of the Big
Miami; beginning at a bur oak



and elm southwest corner to George Clarks survey No. 9948, south-
east corner to said Clarks survey No 9947 and North east corner
to Nathans Reeves survey No. 9927, thence with Reeves line S 12
E. 152 poles to a white oak in said line Northwest corner to
William H Beards survey No. 9903 & 9928; thence with Beards
line N. 78 E. 224 poles to a stake in said line corner to Walter
Duns entry No. 12320; thence with said Duns line N. 31 E
207 poles to a stake corner to said Duns in the line of said
Clarks survey No. 9948, thence with the line of said Clarks
survey S. 78 W. 365 poles to the beginning.

George Henry
James Henry C.C.
David Chapman M. K. r.

Thomas S. Mathur D.S.
Sept. 30. 1824
Decem^r 3. 1824



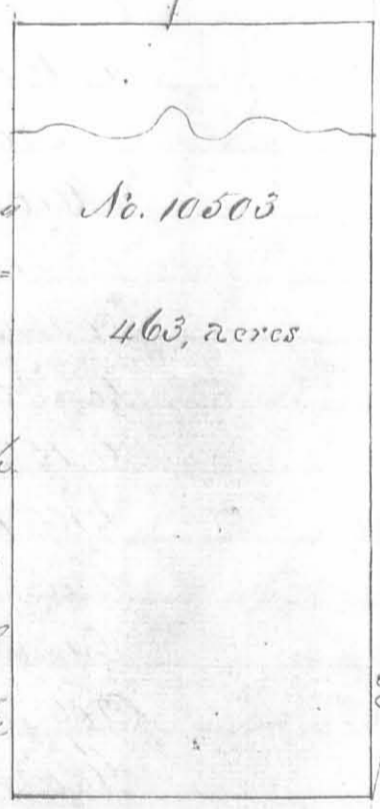
Surveyed for James Galloway Jun^r 230 a-
 cres of land, (100 acres) on a Military
 warrant No. 3236 and 130 acres on part
 of No. 2947 on the waters of the big Miami
 beginning at a bur oak and elm South-
 west corner to George Clark's survey No. 9948

and North east corner to Nathan Reeves survey No 9927, thence with
 said Reeves line S. 12. E. 132 poles to a white oak in said line, North
 west corner to William N Beard's survey No. 9903 & 9928, thence with
 said Beard's line N. 78, E. 220 poles to a stake in said line, corner to
 Walter Duns survey No. 12320, thence with said Duns line N. 31 E
 182 poles to a stake corner to his survey in the line of Clarks said
 survey, thence with said Clarks line S. 78 W. 342 poles to the beginning.

James Hill
 Samuel Queen J.C.C.
 John Watts M.R.

James Galloway Jun^r D.S.
 June 1st 1833
 November 8. 1833

Surveyed for Chimwell Bancroft 463 acres of land on
 part of a Military warrant No. 2257 on the waters
 of big Miami; beginning at a hickory lynn and
 sugar tree northeast corner to the representatives Francis
 and James Taylors survey No. 9969 and North East cor-
 ner to the Representatives of Robert Youngs survey No.
 9970; thence with a line of Robinson and others survey
 No. 9987, N. 12 W. 400 poles crossing a small branch
 at 20 and the north branch of Miami at 336 pole
 to a beech north corner to survey No. 9987, thence S
 78 W. 186 poles to two ashes and three elms, thence S
 12 E 400 poles crossing the branch of Miami to a stake
 in the line of survey No. 9969, thence with said
 line N. 78 E. 186 poles to the beginning.



Levi D Sharp
 Wilkiah Rosebrag J.C.C.
 Wilson L Thompson M.R.

Samuel Forrer D.S.
 December 5th 1820
 December 12th 1820

No. 10503
333 acres

Surveyed for Chimell Barrett 333 acres of land on part of a military warrant No. 2257 on the waters of big Miami; beginning at a hickory lynn and sugar tree north east corner to the representatives of Francis and James Taylor survey No. 9969 and north west corner to the representative of Robert Youngs survey No. 9970, thence with the line of Robinson and other survey No. 9987 N. 12 W. 258 poles crossing a small branch to a stake; thence S. 78 N. 186 poles to a stake south west corner to said Barrett's survey No. 10503 of 130 acres, thence S. 12 E. 288 poles, crossing three branches to a stake in the line of said Taylor's survey No. 9969, thence N. 78 E. 186 poles to the beginning.

Levi D. Sharp
Michieah Rosebrag
Wilson L. Thompson M.k.r.

Thomas J. McArthur D.S.
May 4. 1826
May 16. 1826

Surveyed for Chimell Barrett 130 acres of land on part of a military warrant No. 2257 on the waters of the big Miami, beginning at a beech, elm, and ash north west corner to Robinson and other survey No. 9987, thence S. 78 N. 186 poles to two ashes and three elms thence S. 12 E. 112 poles to a stake; thence N. 78 E. 186 poles to a stake north west corner to said Barrett's survey No. 10503 of 333 acres, thence N. 12 W. 112 poles crossing the north branch of the big Miami to the beginning.

No. 10503
130. acres

Levi D. Sharp
Michieah Rosebrag
Wilson L. Thompson M.k.r.

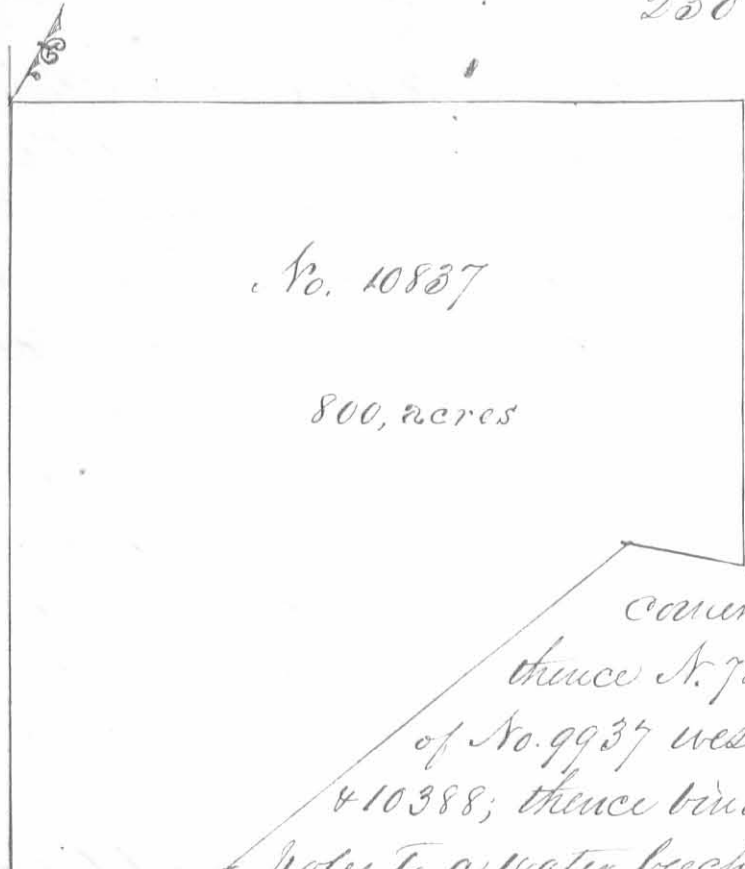
Thomas J. McArthur D.S.
May 4th 1825
May 16. 1825

No. 12110
200, acres

Surveyed for John Clark 200 acres of land on a military warrant No. 6511 on the waters of big Miami river; beginning at a hickory and maple at the southeast corner of James Kerrons entry No. 12066 which has been withdrawn and in the west line of Nathan Reeves survey No. 9927, thence S. 78 N. 187 poles to two white oaks and a hickory in the line of Walter Dean survey No. 9592. 9946 of 10121; thence S. 12 E. 196 poles to an ash and red oak, thence N. 61 1/2 E. 194 poles to an ash and maple in the line of Nathan Reeves said survey; thence with said line N. 12 W. 146 poles to the beginning.

Samuel Lane
Saml Richards
Samuel Hurd M.k.r.

Thomas J. McArthur D.S.
Novem^r 4. 1824
Feb. 22. 1825

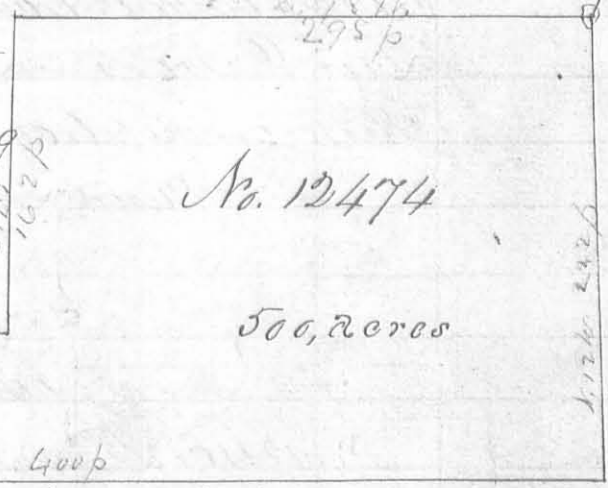


Surveyed for James Higgins 800 acres of land on part of a Military warrant No 6465 on the waters of Rush creek; beginning at two large beech Northeast corner to James Wrights survey No. 9956 and corner to No 9997 & 9978, thence S 12 E 400 poles to two ash and an Elm Northeast corner to James Remick's survey No 9936 thence N. 78 E. 120 poles to two beech in the line of No. 9937 west corner to Atkins survey No. 10387 & 10388; thence binding on said survey N. 40 E. 260 poles to a water beech and two oak corner to said survey; thence N. 78 E. 60 poles to a beech and ash; thence N. 12 W 240 poles to an ash and beech corner to survey No 10239; thence S. 78 W 385 poles to the beginning.

John Dodd
 Charles Hoffman C.C.
 P. A. White M.K.R.

Thomas S. McArthur D.S.
 March 27th 1823
 Novem 6. 1824

Surveyed for Thomas Green 500 acres on part of a Military Warrant No. 6572 on the waters of Boker & Mill creek; beginning at a sugar tree and two beech Northwest corner to Cannon, Taylor, Williams & Pelham's survey No 9890, thence S. 78 W. 295 poles to a lynn & beech Northeast corner to Means & Clarke's survey of 100 acres No. 9889, thence S. 12 E 162 poles to a beech thence S. 78 W 105 poles to a stake in the line of the Representatives of Charles Porterfield's survey No. 9888; thence S. 12 E 80 poles to a beech thence N. 78 E 400 poles to a lynn in the line, of the Representatives of Charles Porterfield's survey No. 9888, of Cannon & others survey; thence N. 12 W. 222 poles to the beginning.



Samuel Zane C.C.
 Joseph Collins C.C.
 William Blafingen

Thomas S. McArthur D.S.
 June 20th 1824
 October 11. 1826