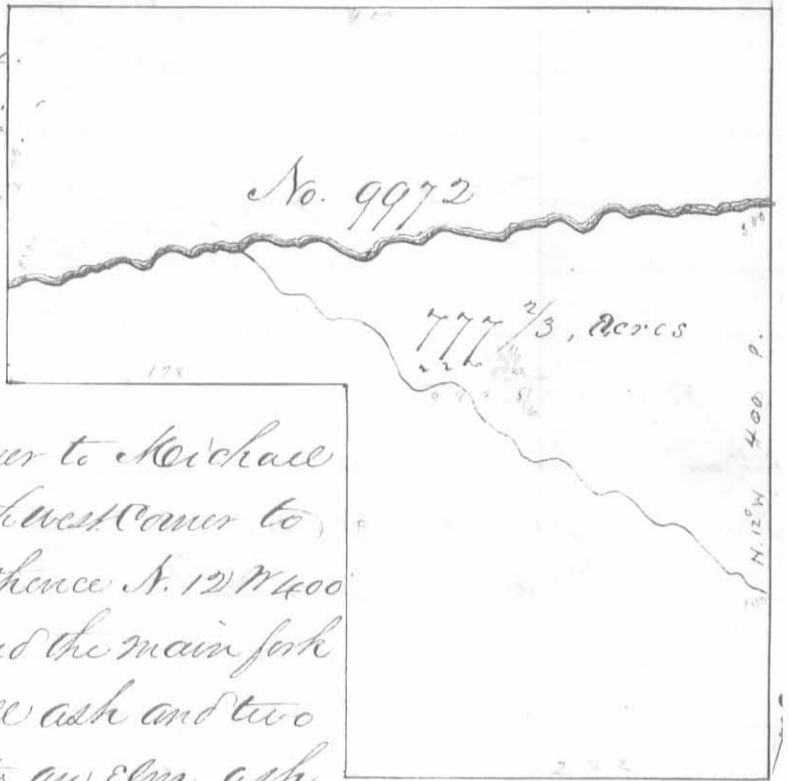
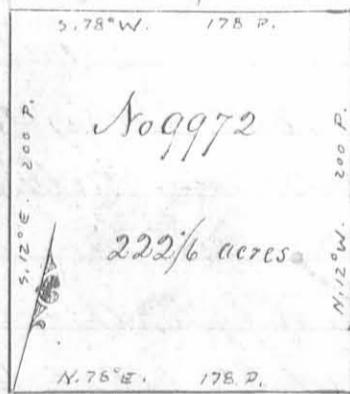


Surveyed for the Representatives of John Gallison, James Taylor Esq^r and Robert Kirk 777²/₃ acres of land on a Military Warrant and part of one; Gallison 555 acres on No. 5457 Taylor and Kirk 222¹/₆ acres on No. 5146 on the Waters of Big Miami; beginning at two buckeyes and a beech northeast corner to Michael Bowyers survey No. 9951 and Northwest corner to Robert Means survey No. 9952; thence N. 12 W. 400 poles, crossing a branch at 100 and the main fork of Miami at 300 poles to a small ash and two beeches; thence S. 78, W. 400 poles to an elm ash and hack-berry northeast corner to Temple and others survey No. 9971 thence with their line S. 12 E. 200 poles crossing the fork at 150 poles to a beech northwest corner to Robert Kirks survey No. 9972; thence with his line N. 78, E. 178 poles to an ash dogwood and beech north east corner to said Kirks survey; thence with his east line S 12 E 200 poles to a buckeye and two beeches Kirks southeast corner; thence with Bowyers line N. 78, E. 222 poles to the beginning.



Levi D. Sharp
 Hilkiak Rosebrag 3 C.C.
 Wilson S. Thompson Mkr.

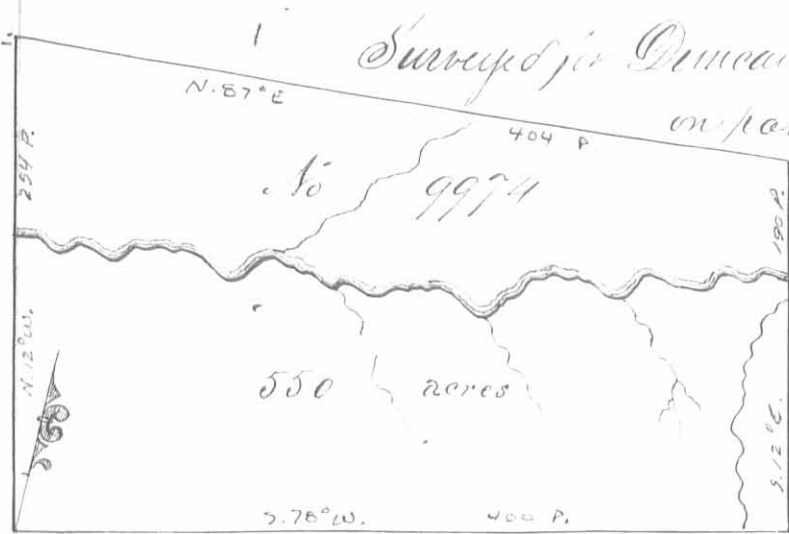
Samuel Forrer D.S.
 March 3^d 1820
 March 12th 1821



Surveyed for Robert Kirk 222¹/₆ acres of land on part of a Military Warrant No. 5146 on the Waters of Big Miami; Beginning at the South east corner of Temple and others survey No. 9971 and North east corner of Michael Bowyers survey No. 9950; thence with Bowyers line of his survey No. 9951 N. 78 E. 178 poles to a buckeye and two beeches; thence N. 12 W. 200 poles to an ash dogwood and beech; thence S. 78 W. 178 poles to a beech in the line of survey No. 9971; thence with said line S. 12 E 200 poles to the beginning.

Levi D. Sharp 3
 Hilkiak Rosebrag 3 C.C.
 Wilson S. Thompson Mkr.

Samuel Forrer D.S.
 March 3^d 1820
 March 12th 1821



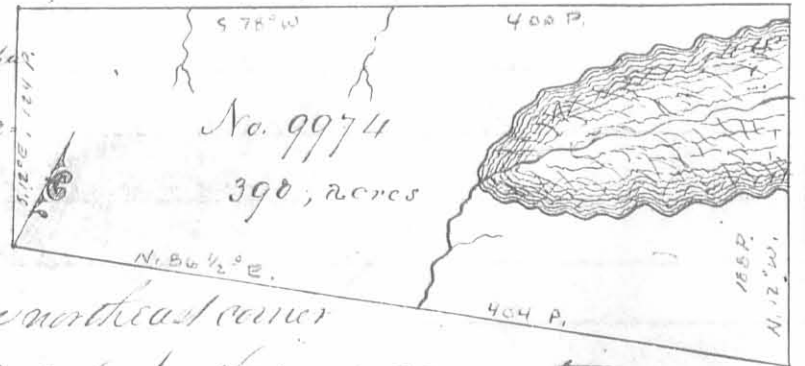
Survey for Duncan McArthur of 550 acres of land on part of two Military Warrants; 500 acres on No. 5637 and 50 acres on No. 3104 on the big Miami; beginning at two beeches and a sugar tree southeast corner to Robert Means survey No. 9973; thence with his line N. 12. W. 254 poles crossing the

Miami at 130 poles to two beeches and a buckeye; thence N. 8. E. 404 poles crossing the beaver dam branch to a beech and sugar tree; thence S. 12 E. 190 poles crossing a branch at 18 the Miami at 37 and a branch at 62 poles to four beeches and a sugar tree; thence S. 78. W. 400 poles crossing a small branch at 24 and one at 300 poles to the beginning.

George Henry 3
James Henry 3 C.C.
Benjamin McColloch M.K.R.

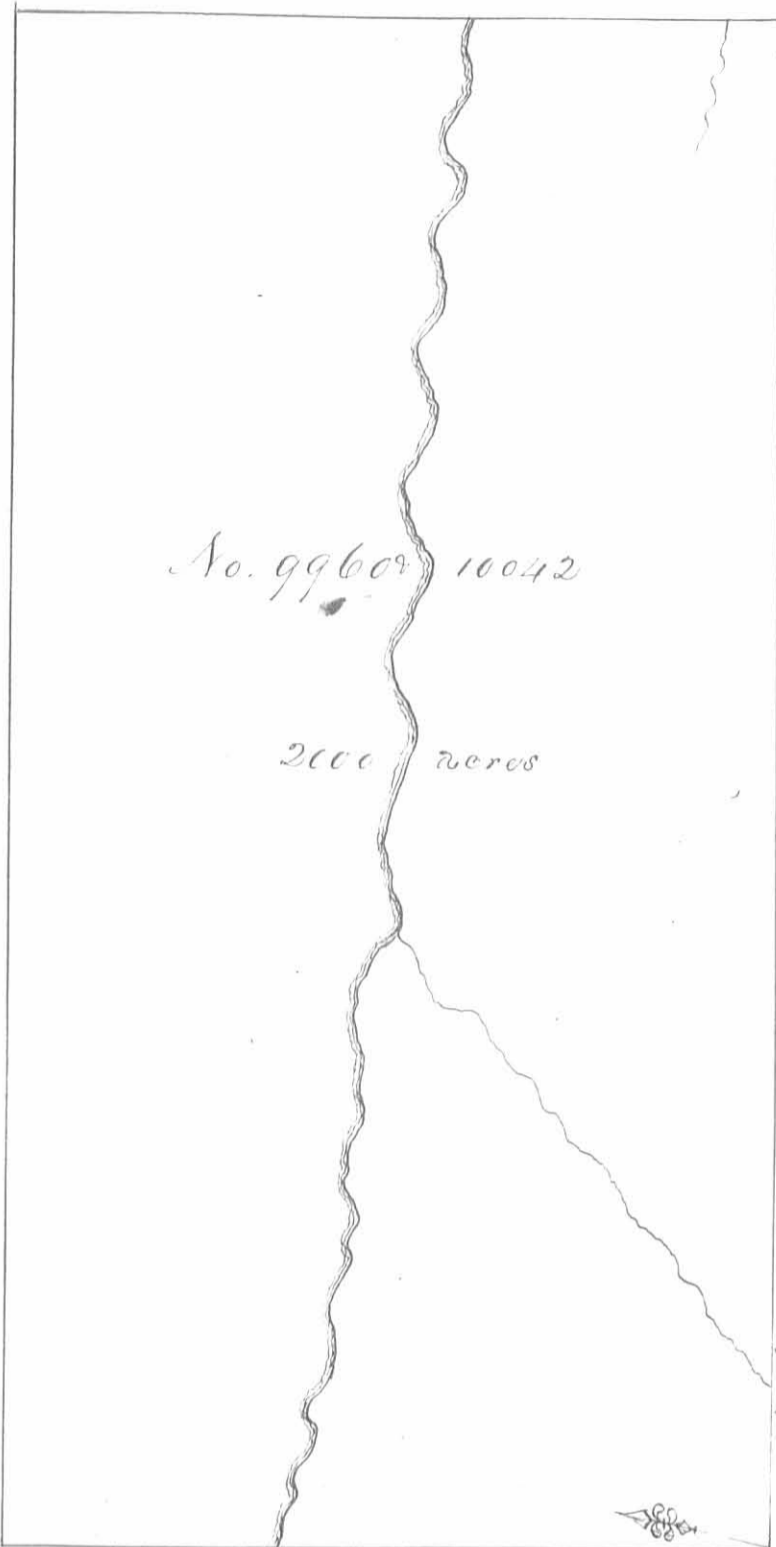
Thomas S. McArthur D.S.
January 28th 1820
March 28th 1821

Survey for Duncan McArthur of 390 acres of land on part of a Military warrant No. 5743 on the waters of the Big Miami; beginning at two beeches, a hickory and buckeye northeast corner to Robert Means survey No. 9973 and North west corner to said McArthur's survey No. 9974 for 550 acres; thence with the line of survey No. 9974, N. 86. S. E. 404 poles crossing the Beaver Pond branch to a beech and sugar tree; thence N. 12. W. 188 poles crossing the beaver pond prairie from 90 poles to the corner two maples from one root an ash and elm northwest corner to survey No. 9975; thence S. 78. W. 400 poles crossing a branch at 204 and one at 310 poles to two beeches and a sugar tree; thence S. 12 E. 124 poles to the beginning.



George Henry 3
James Henry 3 C.C.
Benjamin McColloch M.K.R.

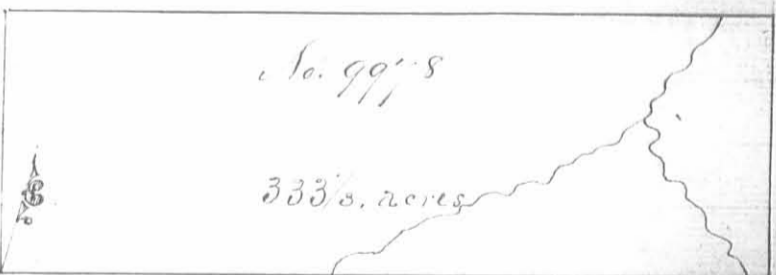
Thomas S. McArthur D.S.
January 3, 1821
September 7th 1821



Surveyed for the Representatives of Richard Rudolph dec'd 2000 acres of land on part of a Military Warrant No. 6310 on Rush Creek: Beginning at an Elm tree and sugar tree south east corner to Robert McCarus Survey No. 9959; thence with his line N. 12. W. 400 poles crossing the Creek at 265 poles to a white oak iron wood and sugar tree Southeast corner to said survey thence N. 78 E. 800 poles to two elms and a hickory thence S 12 E. 400 poles crossing the Creek at 230 and a branch at 373 poles to two sugar trees and a large hickory; thence S 78 W. 800 poles crossing a branch at 713 poles to the beginning.

James Thompson
 James McArthur 366 Thomas McArthur D
 November 10th 1821
 McArthur Bernier M.k. February 12th 1822.

Surveyed for the Representatives of John Spotwood 333 1/3 acres of land on a Military Warrant No. 5146 on the waters of Scioto: Beginning at two beeches Southeast corner to Robert McCarus Survey No. 9977 and and Northeast corner to James Wright's survey No 9956, thence N. 78, E. 400 poles crossing a branch at 176 and one at 390 poles to an ash and beech, thence N. 12. W. 133 1/2 poles to a dog-wood and iron wood; thence S. 78 W. 400 poles to a stake in McCarus line, thence with said line S. 12 E. 133 1/3 poles to the beginning.



Levi O. Tharp
 Nathaniel Rosinag C.C.
 Wilson S. Thompson M.C.

Samuel Forrer D.S.
 March 4th 1820
 March 10th 1821

No. 9978

666 $\frac{2}{3}$ acres

Surveyed for Robert Porterfield and James Taylor a part 666 $\frac{2}{3}$ acres of land on a Military warrant No. 5085 on the waters of Scioto: Beginning at two ashes North east corner to Robert Means survey No 9977, thence with his line S. 12. E. 266 $\frac{2}{3}$ poles to a Stake Northwest corner to

Spetswoods survey No 9978; thence with his line N. 78. E. 400 poles to a dogwood and Ironwood north east corner to said survey; thence N. 12 W 266 $\frac{2}{3}$ poles to a buckeye and two hickories, thence S. 78 W 400 poles to the beginning.

Levi D. Sharp
 Melkiah Roxbrag
 Wilson L Thompson M.k.r.

Samuel Forrer D.S.
 March 4th 1820
 March 10th 1821

Surveyed for Francis Meier 1000 acres of land on part of a Military warrant No. 1474 on the waters of the Big Miami: Beginning thru beches Southeast corner of Miller, Green and Taylors survey No. 9975; thence N. 78 E. 400 poles to a hickory, beech and sugar tree North east corner to James Bustas survey No. 9955, thence N. 12. W 400 poles to a sugar tree and three beches; thence S 78 W 400 poles to two beches Northeast corner of said Millers and others survey; thence with the line of said survey S. 12 E. 400 poles crossing a branch at 54 poles to the beginning.

Levi D. Sharp
 Melkiah Roxbrag
 Wilson L Thompson M.k.r.

No. 9976

1000 acres

Sam^l Forrer D.S.
 March 4th 1820
 July 21st 1820



Surveyed for Walter Dun

560 acres of land on part of four Military Warrants, 63 acres on No. 6222. 47 acres on No. 6217. 350 acres on No. 5385 and 100 acres on No. 6218 on Mad River: Beginning at two white oaks southerly corner to Hobland & Haueys survey No. 3242 in the line of said Haueys survey No. 3222, thence with the line of the first mentioned survey, N. 21 W. 107 poles to a white oak, hickory and a stake westerly corner to the said survey; thence with another line thereof, N. 69 E. 152 poles to a stake in said line and in the line of Thomas Parkers survey No. 4497 thence with Parkers line N. 26. 40 W. 93 poles to two white oaks and a hickory westerly corner to Parkers said survey; thence N. 69 E. 22 poles to a white oak and hickory corner to Parkers said survey thence N. 75. W. 90 poles to a white oak two dogwoods and a mulberry easterly corner to James Denny's survey No. 4957; thence with Denny's line S. 30 W. 156 poles crossing a small spring branch at 104 and a large spring branch at 142 poles to an elm and two dogwoods corner to Denny's said survey; thence with another of his lines S. 57 W. 208 poles crossing Mad river at 154 poles to a stake another corner of Denny's; thence with another of Denny's lines S. 30 E. 25 poles to a stake corner to Denny's said survey; thence S. 60. W. 200 poles passing a stake on the side of a brushy ridge at 170 poles the most southerly corner of Denny's said survey and with the line of said Duns survey No. 8303 and 8485 to a stake corner to Duns said survey in the line of Anthony Singleton's survey No. 4943 thence with Singleton's line S. 80 W. 196 poles crossing Mad river to a hickory north easterly corner to Singleton's said survey; thence with another of his lines S. 20 E. 90 poles crossing a branch at 70 poles to two hickories and a white oak an old marked corner in said line; thence S. 86 E. 50 poles to a white oak and red oak an old marked corner; thence S. 69 E. 233 poles crossing a branch at 34 poles passing the westerly corner of Haueys survey No. 3222 at 73 poles and with his line to the beginning.

Elusly Pope

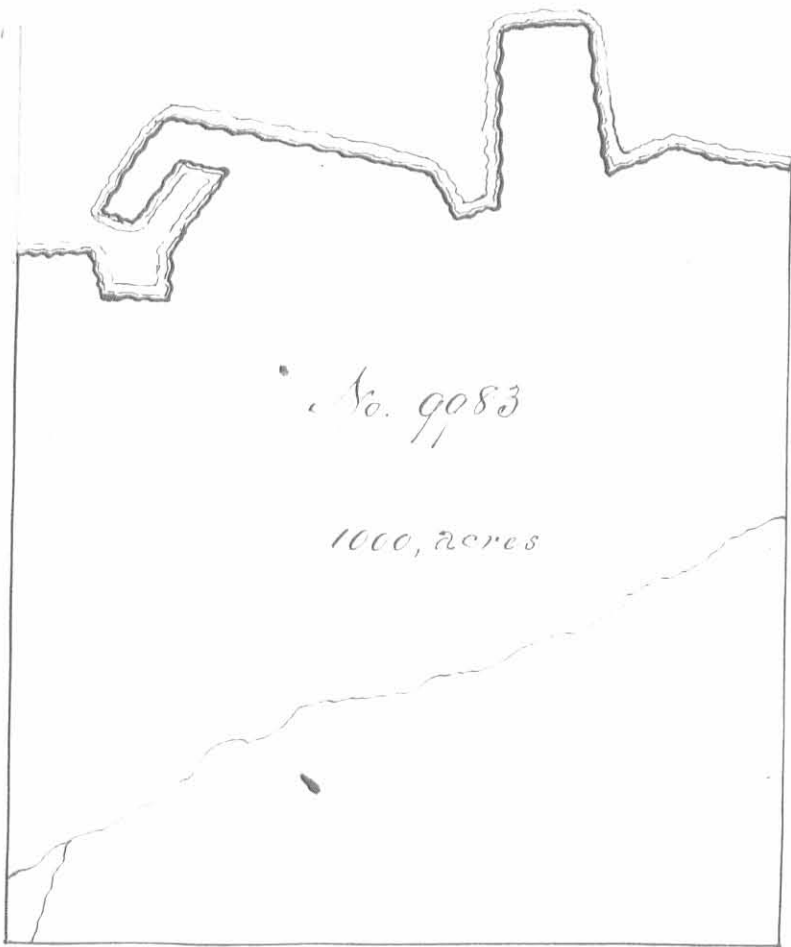
Isham Meate

Asa S. Hunt M. k. r.

Walter Dun, D. S.

January 3. 1820

February 8th 1820



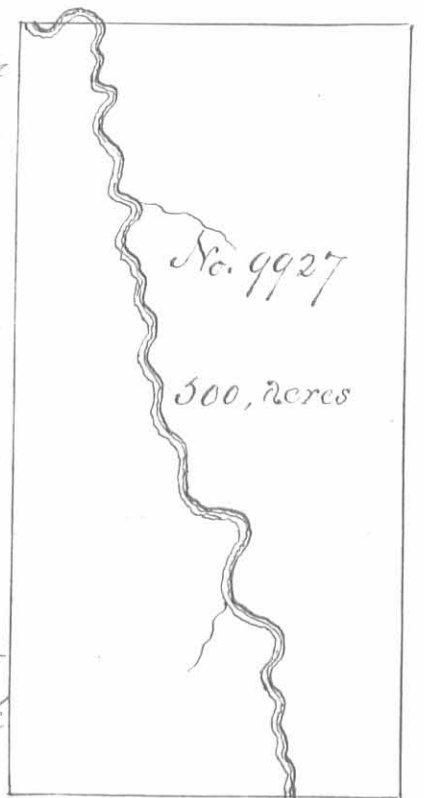
Surveyed for the Representatives of Michael Rudolph acc^o 1000 acres of land on part of a Military warrant on the Scioto: Beginning at four Sycamores and an ash upper corner on the river to Alexander Farkers heirs entry No 9984, thence with their line S. 12. E. 406 poles crossing a branch at 187 poles to two elms and a lynn in said line; thence S. 78 W 1100 poles crossing a branch at 392 poles to an elm lynn and sugar tree; thence N. 12. W 360 poles crossing a branch and passing the lower back corner

of Elizabeth Poligers and others survey No 9996 at 34 poles to two cocks and a sugar tree lower corner on the river to said survey; thence down the river binding thereon, N 78 E 42. S 14 E. 24, N 78 E. 36, N 12 W. 23. N. 24 E 51, West 24, S 25. W. 41 N. 88 W 18. N. 25 E. 61. N. 88 E. 139, S 40 E 30, N. 62 E. 22, N 12 W 92. N. 78. E 46, S 17 E. 78, N 58 E 42. N. 85. E. 60 poles to the beginning.

Francis Thompson
 Dan^d McArthur & C. C.
 Matthew Bannock M. R.

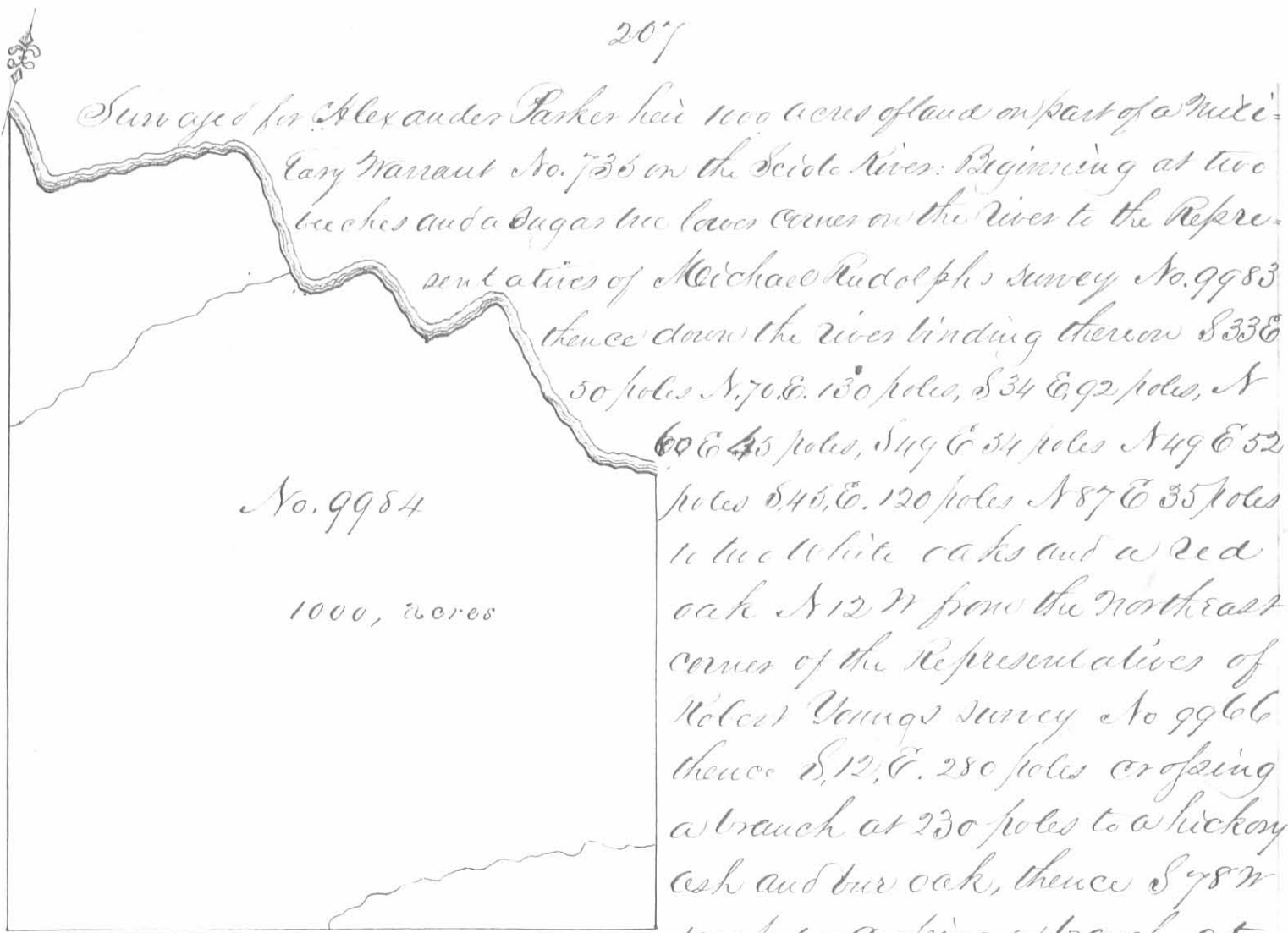
Thos J. McArthur D. S.
 December 17th 1821
 February 13th 1822

Surveyed for Nathan Reeves acc^o 500 acres of land on part of a Military Warrant No 6246 on Cherokee mans run; beginning at a black oak, red oak, elm and hickory Northeast corner to the Representatives of Michael Rudolph's survey No. 9902 and Southwest corner to Mrs A. H. Hinds and others entry No. 9928 thence S. 78 W 200 poles crossing Cherokee mans run at 58 poles to an ash in a swamp; thence N. 12 W 400 poles to two luckettes and a small ash in run bottom; thence N. 78 E. 200 poles crossing the run at 3 at 14 and at 36 poles to a black oak and small hickory; thence S 12 E 400 poles to the beginning.



George Henry
 James Henry & C. C.
 Benjamin McCollack M. R.

Thomas J. McArthur D. S.
 January 13th 1821
 May 30th 1821

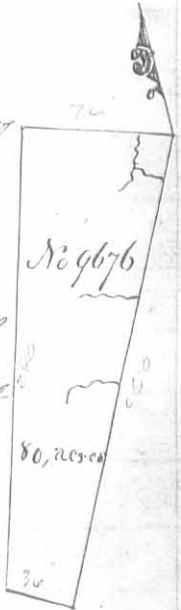


Surveyed for Alexander Parker here 1000 acres of land on part of a Military Warrant No. 735 on the Seido River: Beginning at two beeches and a sugar tree lower corner on the river to the Representatives of Michael Rudolph's survey No. 9983 thence down the river binding thereon S 33 E 50 poles N 70 E 130 poles, S 34 E 92 poles, N 60 E 45 poles, S 49 E 34 poles N 49 E 52 poles S 45 E 120 poles N 87 E 35 poles to two white oaks and a red oak N 12 W from the northeast corner of the Representatives of Robert Young's survey No. 9966 thence S 12 E 280 poles crossing a branch at 230 poles to a hickory ash and two oak, thence S 78 W 100 poles crossing a branch at 200 poles to two beeches a cypress and elm; thence N 12 W 506 poles crossing a branch at 312 poles to the beginning.

William Lane
 Matthew Bonner C.C.
 Sylvanus Bonner M.k.r.

Thos J M Arthur D.S.
 December 16th 1822
 February 1st 1823

Surveyed for Edward Matts approx 50 acres of land on part of a Military Warrant No. 6203 on the waters of Head river Beginning at three beeches southerly corner to Perkins and Aldridges survey No. 9371 in the line of William Agans survey No. 4682 running with Perkins and Aldridges line N 75 W 76 poles crossing a small branch to two poplars North easterly corner to Thomas Threatts survey No. 4661 thence with his line S 15 W 240 poles to a cypress and poplar corner to said Threatts survey; thence S 65 E 36 poles to two sugar trees and elm and cypress corner to said Agans survey; thence with his line N 25 E 250 poles crossing several small branches to the beginning.



Josiah Outland
 Francis Outland C.C.
 John Outland M.k.r.

James McConary Jun D.S.
 March 13th 1819
 May 4th 1819



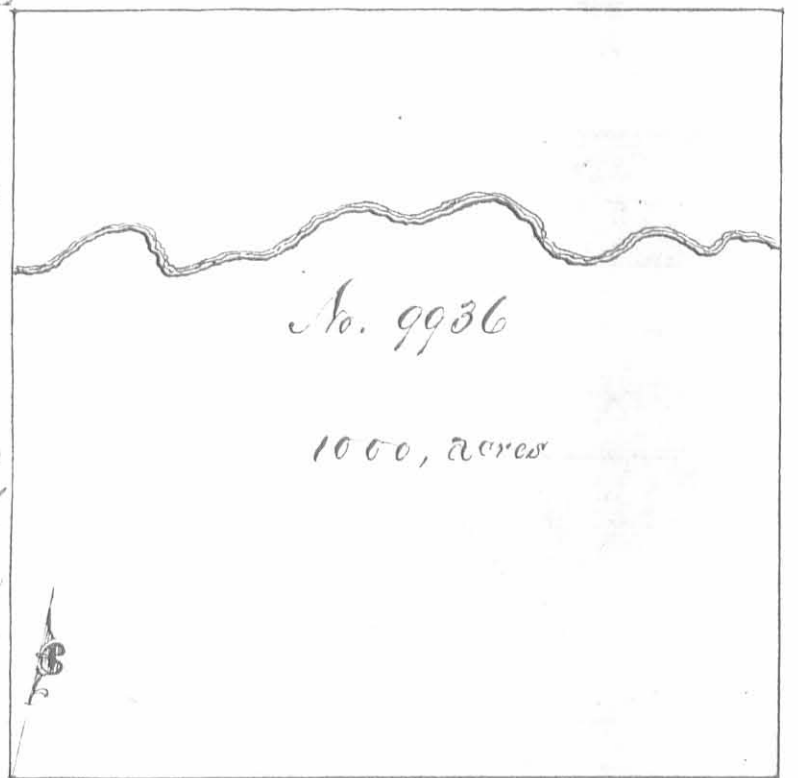
Surveyed for Mulford Wyatt
 Executor 1000 acres of land on
 a Military Warrant No 62-
 100, on the waters of Big Miami:
 Beginning at two white oaks
 South east corner to George Dawson's
 entry No. 9880 in the Greenville
 Treaty line; thence with said line
 N. 78. E. 400 poles to a black oak
 and two white oaks; thence N. 12
 W. 400 poles crossing Cherokee man's
 run at 80 poles to a red oak, black
 white oak and hickory; thence

S. 78, W. 400 poles crossing the run at 152 poles to a bur oak and elm
 Northeast corner to said Dawson's survey; thence with a line of said
 survey S. 12, E. 400 poles to the beginning.

Levi D. Maspe 3
 Silkeah Rostrag 3 C.C.
 Nelson S. Thompson M.k.r.

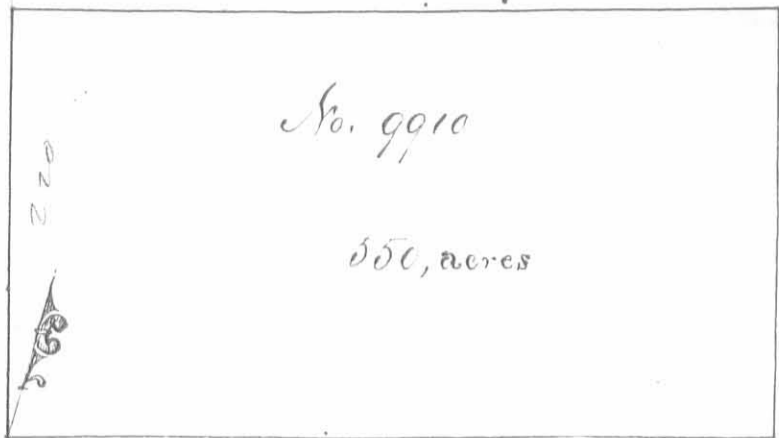
Samuel Forrer D.S.
 January 3^d 1820
 January 25th 1821

Surveyed for James Berwick 1000
 acres of land on part of a Military
 Warrant No. 4036 on Rush Creek:
 Beginning at three beeches at the
 Northeast corner of Entry No 9910
 for 1000 acres in the name of James
 Gilman and John Moore; thence
 N. 12, W. 400 poles crossing the creek
 at 270 poles to three beeches; thence
 N. 78 E. 400 poles to two ashes and
 an elm thence S. 12 E. 400 poles
 crossing the creek at 125 poles to
 three beeches; thence S. 78 W. 400 poles to the beginning.



Samuel Lane 3
 Joseph Collins 3 C.C.
 William Wapington M.k.r.

Thomas S. Arthur D.S.
 Feb'y 14th 1826
 Feb'y 23^d 1826



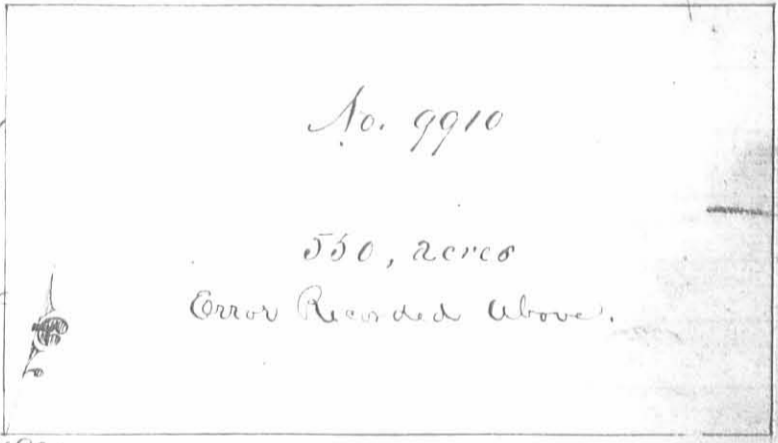
Surveyed for James Gilmore
 550 acres of land on part of a mil-
 itary warrant No. 5157 on the
 waters of Rush Creek; Beginning
 at two sugar trees and a beech south
 east corner to Penabitan Taylors
 and others survey No 9909, thence
 N: 12, W. 220 poles to a stake in

the line of William Mc Kentons survey No. 13199; Thence S 12 E. 220 poles
 passing a sugar tree and beech north west corner of John Griffiths
 100 acre survey No. 9911 at 60 poles to two sugar trees north east
 corner of the Representatives of Charles Porterfields survey No. 9888
 thence with Portersfields line S. 78. W. 400 poles to the beginning.

David Hunt
 Michael Hunt
 John Cole M.k.r.

E. P. Kendrick D.S.
 October 6, 1830
 November 12, 1830

Surveyed for James Gilmore 550
 acres of land on part of a Military
 warrant No. 5157 on the waters
 of Rush Creek: Beginning at
 two sugar trees and a beech south
 east corner to Penabitan Taylors
 and others survey, No 9909. thence



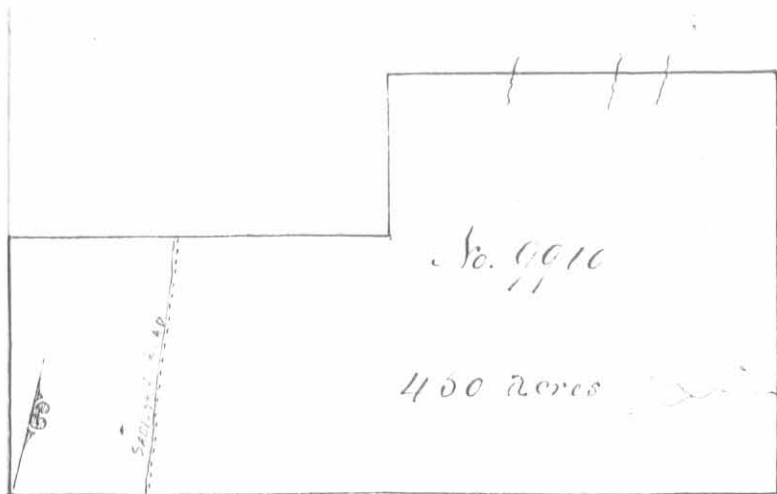
N. 12 W. 220 poles to a stake in the line of William Mc Kentons
 survey No. 13199, thence S. 12 E. 220 poles passing a sugar tree
 and beech north west corner of John Griffiths 100 acre survey
 No. 9911 at 60 poles to two sugar trees north east corner of the Rep-
 resentatives of Charles Porterfields survey No. 9888, thence with
 Portersfields line S. 78 W. 400 poles to the beginning.

David Hunt
 Michael Hunt
 John Cole M.k.r.

E. P. Kendrick D.S.
 October 6, 1830
 November 12, 1830

Note. By mistake this survey was twice copied.

H. D. ...



Surveyed for the Representatives of John Moore 450 acres of land on part of a Military Warrant No. 3160 on the waters of Rush Creek Beginning at a blue ash, three Sugar trees and a beech southeast corner to Pondleton Taylor and others survey No 9909 and North

west corner to the Representatives of Charles Porterfield's survey No 9888 thence with the line of the last mentioned survey N. 78. E. 400 poles crossing the road from Gainesfield to Sandusky to two Sugar trees northeast corner thereof near the gravelly spring; thence N. 12° W. 220 poles crossing a branch at 50 poles to three beeches southeast corner to Duncan McArthur's survey No. 10631; thence with the line thereof S. 73. N. 200 poles crossing several small drains to a small beech; thence S. 12° E. 82 poles to a stake; thence S. 73. N. 200 poles crossing the road to a stake in the east line of said survey No. 9909, thence with said line S. 12. E. 138 poles to the beginning.

John McCoy
James Supter, S. C. C.
John W. McQuis M. R.

C. J. Hendrick D. S.
June 11th 1831
February 1st 1834



Surveyed for John Griffith Agent of Charles Parker 100 acres of land on a Military Warrant No 2968 on the waters of Meade creek; beginning at two Sugar trees Northeast corner to Charles Porterfield's survey No. 9888 & northwest corner to Lewis Taliaferro's & others survey No. 9889; thence with the line of survey No. 9889, N. 78 E. 100 poles crossing a branch at 20 poles to three beeches & two sugar trees on a road; thence N. 12° W 160 poles to a sugar tree, beech, small ironwood and hickory; thence S. 78° N. 100 poles crossing the road at 30 to a sugar tree and beech in the line of No. 9910 thence with said line S. 12, E. 160 poles crossing a branch at 111 poles to the beginning.

James Watkins
Daria Hunt S. C. C.
Jacob Rosbrook, M. R.

Cadwallader Wallace D. S.
April 13th 1830
April 21st 1830