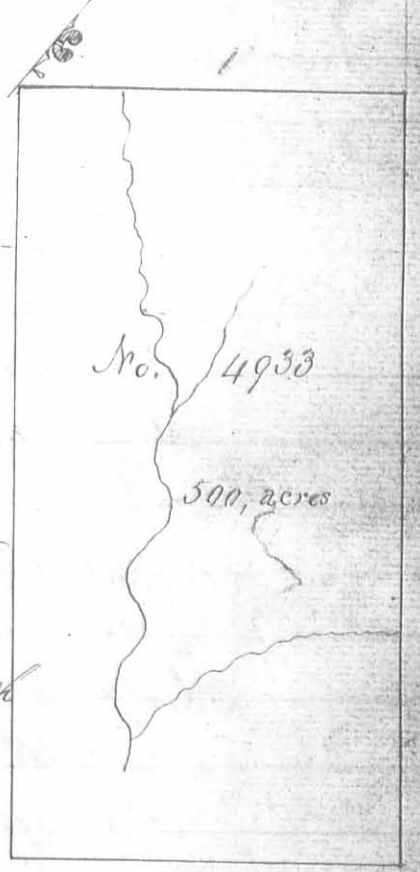


Surveyed for Duncan McArthur 500 acres of land on part of a military warrant No 5072 on the waters of Darby's Creek: Beginning at two sugar trees and a beech southerly corner to Robert Powers survey No. 3680; thence S. 52. N. 217 poles to two beeches, a sugar tree and white oak in the edge of a pond; thence N. 38 N. 370 poles crossing two branches, to two beeches a sugar tree and hickory; thence N. 52 E. 217 poles to a white walnut buckeye and sugar tree in the line of said Powers survey, thence with said line S. 38. E. 370 poles crossing several branches to the beginning.

Joseph Sharp
John Sharp
John McDonald m.k.r.

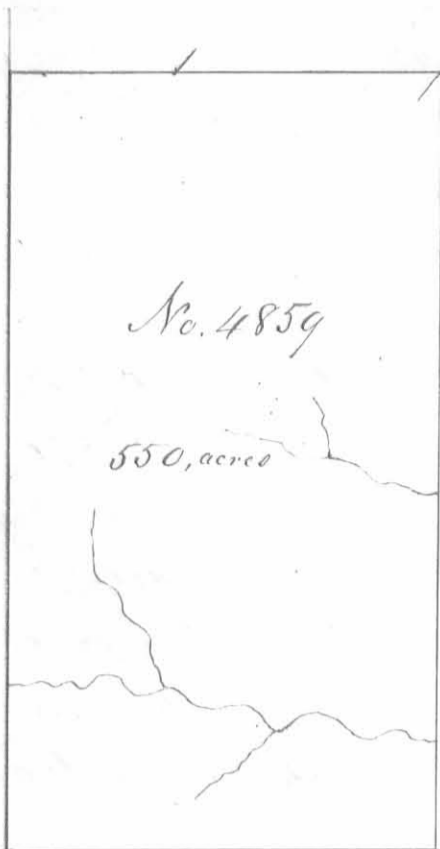
Duncan McArthur D.S.
May 1st 1806
May 6th 1806

Surveyed for Thomas Sears 500 acres of land on part of a Military Warrant No 2418 on the waters of Darby's Creek; Beginning at two sugar trees and an elm easterly corner to George McCreais survey No. 3155 and southerly corner to said Sears survey No 545, thence with the line of the last mentioned survey N. 52 E 200 poles crossing a branch to two beeches and a sugar tree, easterly corner to said Sears survey, thence S. 38 E. 400 poles crossing a branch at 280 poles to two sugar trees and a beech thence S. 52. N. 200 poles crossing a large branch to a beech; thence N. 38. N. 400 poles to the beginning.



Job Sharp
John Sharp
John McDonald m.k.r.

Duncan McArthur D.S.
May 1st 1806
May 6th 1806

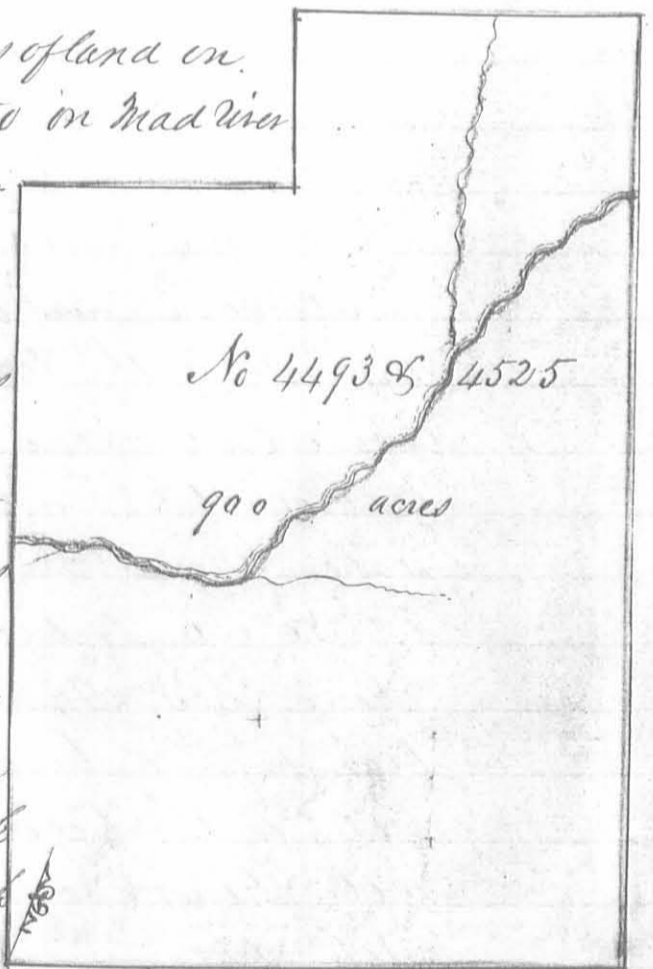


Surveyed for Levi Hollingsworth of 550 acres of land on two Military warrants No 1122, 1489 and 50 acres part of 1880 on the waters of Sadsop creek: Beginning at two beeches westerly corner to Clayton Yanceys survey No. 3688, 180 poles S. 52. N. from the southerly corner of Robert Poyas survey No. 3680, running with his line S. 30. E. 400 poles crossing several branches to two beeches and a sugar tree corner to said Yanceys survey thence S. 52 N. 220 poles to two sugar trees and a red oak easterly corner to Peter Pelhams survey No. 4697, thence with his line N. 88 W. 400 poles crossing a branch at 86 poles to a sugar tree and beech northerly corner to said Pelhams survey, thence N. 52. E. 220 poles to the beginning.

David Sroufe 3
David Blue 3 & 6
Ephraim Byers, M.k.r.

James Galloway Junr L.S.
March 26th 1807
April 24th 1807

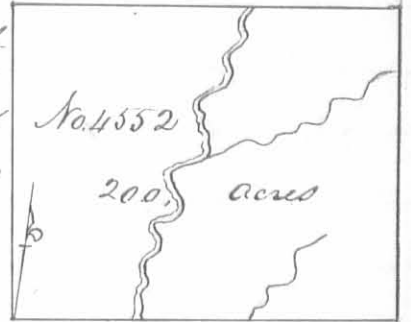
Surveyed for Samuel Finley 900 acres of land on part of a Military Warrant No. 1450 on Mad river Beginning at two black oaks in Sudlows line, N 20. W 199 poles from a white marked 30 mile on said line Northwest corner to Thomas Worthingtons survey No 4479 running N 70 E. 320 poles to a black oak, thence N. 20 W 490 poles crossing Mad river at 393 poles to a stake in a prairie; thence S. 70. W. 178 poles crossing a branch at 70 poles to two hickories and a white oak, thence S. 20. E 90 poles to a white oak and black oak; thence S. 70. W. 142 poles to a black oak in Sudlows line, thence with said line S. 20. E 400 poles crossing the river at 184 poles to the beginning.



Solomon McColloch 3
George McColloch 3 & 6 M.k.r.

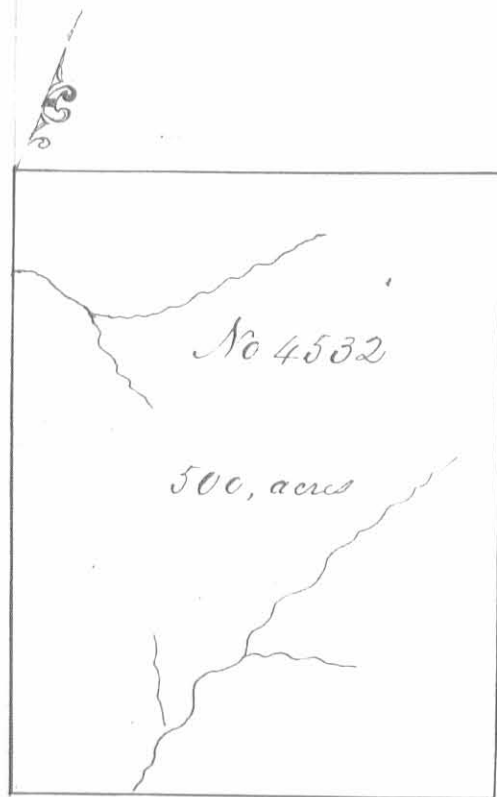
James Denny L.S.
May 1st 1805
September 2nd 1806

Surveyed for John Cole 200 acres of land part of a military Warrant No. 5041 on the East fork of the Little Miami: Beginning at a black gum dogwood and cherry tree and white oak Northwest corner to Thomas Perkins survey No 4256 running with his line and course thereof N. 85. E 200 poles crossing the fork at 67 and a branch at 126 poles, passing Perkins corner at 160 poles to two sugar trees, a cherry tree and red oak, thence N. 5. W 160 poles crossing a small branch at 131 poles to two sugar trees, two small white oaks a dogwood and ash, thence S 85. W 200 poles crossing the fork at 72 poles to three hickories and a beech, thence S. 5. E. 160 poles to the beginning.



John Poke
Richard Baldeck } C. C. M. K.

James Gallaway Junr D. S.
October 10th 1804
January 9th 1805



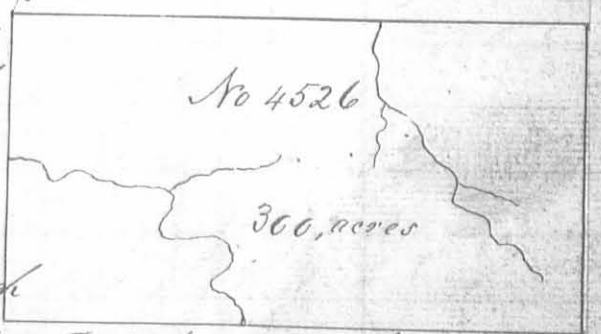
Surveyed for John Cole 500 acres of land on part of a Military Warrant No 5041 on the waters of Mad River. Beginning at a white oak ash and elm, in the line run by Swallow from the head of the Little Miami towards the head of the Scioto, 40 poles N. 20. W from the eight mile tree running N 70 E 250 poles to two elms a white oak and hickory thence S 20 E 320 poles to two elms and an ash thence S. 70. W. 250 poles crossing a branch to an ash, elm and hickory in Swallows line;

thence with said line N 20 W. 320 poles crossing a branch to the beginning.

John Stevenson }
Moses Collier } C. C. M. K.

James Gallaway Junr D. S.
December 6th 1804
January 9th 1805

Surveyed for James Meers within 300 acres of land on part of a military Warrant No 1382 on the waters of Mad river. Beginning at two hickories northeast corner to Robert Means survey No 4414 running N 70 E 300 poles crossing a branch at 190 poles to a walnut and two elms, thence S 20 E 160 poles to two hickories thence S 70 W. 300 poles crossing a branch at 180 poles to a white oak and black oak southeast corner to Robert Means survey, thence with his line N. 20. W. 160 poles crossing a branch to the beginning.



John Stevenson }
Moses Collier } C. C.
Joseph Coffey M. K.

James Gallaway Junr D. S.
January 5th 1805. January 10th 1805

No 4507

180 acres

Surveyed for Thomas Browder Apr^r 110 acres of land on part of a Military warrant No. 5045 on the waters of Kings Creek a branch of Mad. river. Beginning at three Cherry trees, two from our root and two Elms Northeast corner to an entry made for Gabriel Peterson No 4159 running with the line of said entry S 69 W 160 poles to six live oaks, four from our root; thence S. 21. W 110 poles to a stake in a prairie in the line of an entry made for said Peterson No 4494, thence with the line of said entry N. 69. E. 160 poles through the Indian Corn field crossing a branch at 140 poles to a white oak, red oak and elm in said line, thence S. 21. E 110 poles to the beginning

John Stevenson

Moses Collier 3 10.6

Richard Balcock M.k.r.

James Gallaway Jun^r D.S.December 1st 1804January 9th 1805

Surveyed for Samuel McCulloch Apr^r 160 acres of land on part of a Military warrant No 5052 on Mad River.

Beginning at two sugar trees and two buckeyes running S. 30. E. 160 poles to a stake in a prairie near the bank of Mad river, thence S to W. 160 poles to a stake on the side of a brushy ridge; thence N 30 W 160 poles to two hickories and two red oaks, thence N. 60. E 160 poles to the beginning.

James Dougherty

George McCulloch 3 66

Samuel McCulloch, M.k.r.

James Drury D.S.

June 18th 1804October 18th 1804

No 4520

675 acres

Surveyed for Richard Osburn Apr^r 675 acres of land on the following Military Warrants viz^t. No 997, 1181, 2941, 3228, 2974 and 75 acres on part of Warrant No 3997 on the waters of Mad river; beginning at a small white oak southwesterly corner to Gabriel Petersons entry No 4494 running thence with his line N. 21. W. 460 poles, passing his Northwesterly corner at 250 poles which is supposed to be Southwesterly corner to Augustine Smiths survey No. 3229 to two red elms and three hickories; thence S. 70. W. 235 poles passing the Southwesterly corner of Jesse Davis entry No 4492 at 60 poles to two white oaks, and a hickory in Davis's line; thence S. 20 E. 460 poles crossing a branch at 120 poles to a stake in a prairie, thence N. 70 E 244 poles to the beginning.

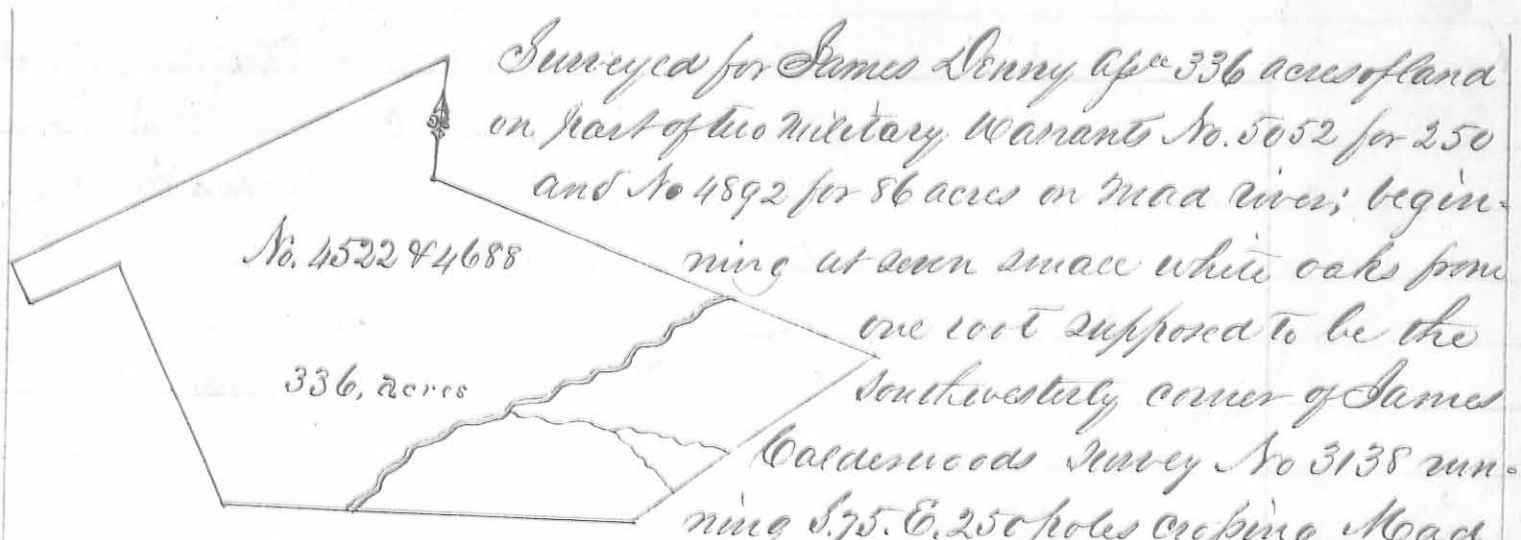
Isaac Sollen

Stephen Souers 3 66

William Rector M.k.r.

John Osburn D.S.

August 20th 1804September 18th 1804

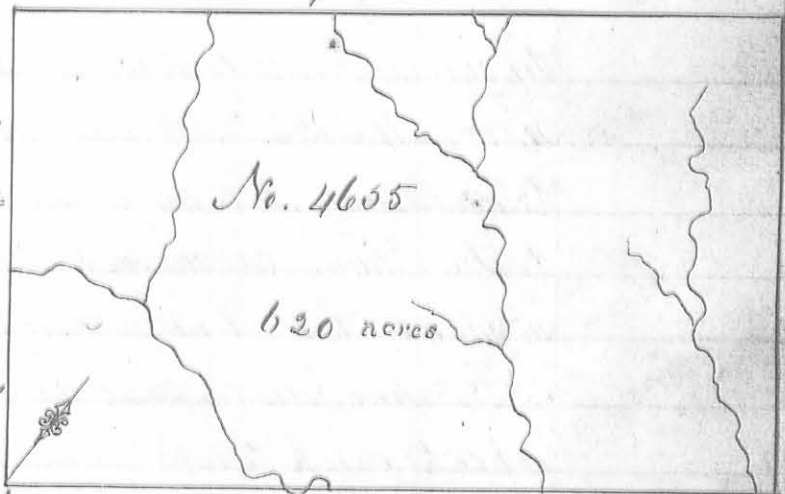


Surveyed for James Denny 336 acres of land on part of two military warrants No. 5052 for 250 and No 4892 for 86 acres on Moad river; beginning at seven small white oaks from one root supposed to be the southwesterly corner of James Calderwoods survey No 3138 running S. 75. E. 250 poles crossing Moad river at 166 poles to a white oak, two dogwoods and a Mulberry thence S. 50. W. 160 poles, crossing a drain at 100 and one at 134 poles to two dogwoods an elm and hickory, thence S. 87 W. 210 poles crossing the river at 138 poles to a stake in the line of Samuel McCullochs survey No. 4495, thence with his line N. 30 W. 134 poles to two sugar trees and two buckeyes Northeastly corner to said McCullochs survey, thence S. 60. W. 40 poles with another of his lines to a stake; thence N. 30 W. 20 poles to a stake; thence N. 58. E. 246 poles to three elms and a burr oak; thence south 60 poles to the beginning.

Solomon McCulloch
George McCulloch 3/66
Samuel McCulloch m.k.r.

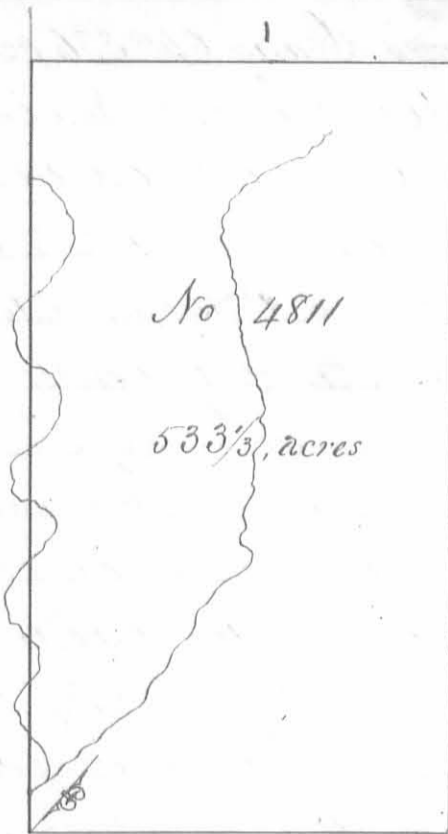
James Denny D.S.
June 27th 1805
January 6th 1806

Surveyed for the Representative of Seucelling Jones 620 acres of land on part of a Military warrant No. 5063 on the waters of Beaver run a branch of Darby creek; Beginning at two beeches Westly corner to Philip Claytons survey No. 3164, running N. 38. W. 248 poles crossing a branch at 114 poles to two poplars and a hickory; thence N. 52. E. 400 poles crossing a branch at 100 one at 164, one at 240 and one at 258 poles to a sugar tree ash and Ironwood; thence S. 38. E. 248 poles to three beeches easterly corner to said Claytons survey; thence with his line S. 52 W. 400 poles crossing three branches to the beginning.



William Gibson
Henry Starns 3/66
John Baird m.k.v.

James Gallaway Junr D.S.
May 6th 1805
May 9th 1805

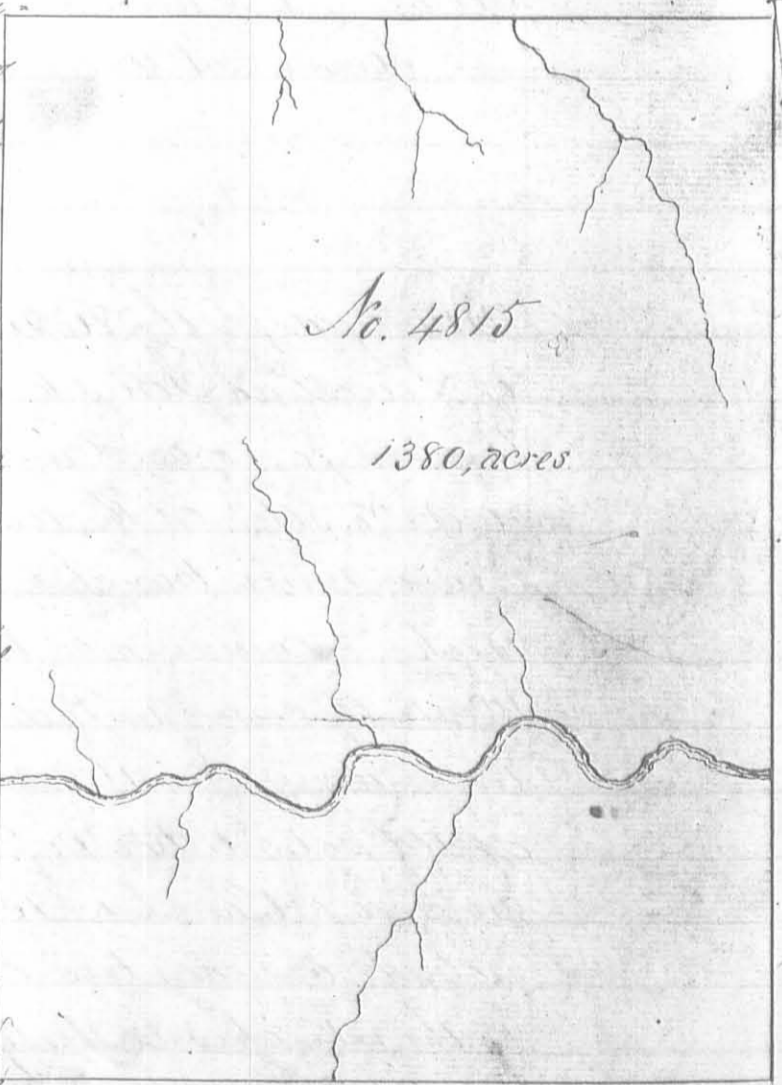


Surveyed for Benjamin Poifrau $533\frac{2}{3}$ acres of land on part of a Military Warrant No 5024 on Beaver run a branch of Dartsy's creek: Beginning at three buckeyes and an elm easterly corner to Philip Slaughters survey No. 3154 and Northerly corner to George M^cOrdin survey No. 3155 running with Slaughters line N. 38. W. 400 poles crossing Beaver run several times to three hickories northerly corner to said Slaughters survey and southerly corner to Williams Croghans survey No. 4689, thence with Croghans line N. 52 E. 217 poles to a buckeye white oak and hickory in said line; thence S. 38. E. 400 poles to three sugar trees thence S 52 N

217 poles to the beginning.
 Alexander Kerr
 James Stephens 3/106
 Joshua Sharp, m.k.v.

James Galloway Jun^r D.S.
 December 11th 1805
 December 13th 1805

Surveyed for the representation of Alexander Kerr, 1380 acres of land on part of a Military Warrant No. 5063 on Mile creek a branch of the west fork of Scioto. Beginning at two beeches and a lynn southwest corner to David Duncans survey No 3443, Northwest corner to said Duncans survey No 3444 and southeast corner to Peter Manifold survey No. 2832 running running with the line of Manifold survey N. 38. W. 400 poles crossing several branches of books creek to a white oak, elm lynn and hickory, southwest corner to said Manifold survey; thence S. 72 W. 552 poles crossing the creek at 402 poles and passing the Northwest corner of James Galloway Jun^r survey No 4813 and with his line to two sugar trees an ash and lynn southeast corner to said survey; thence S. 83. E. 400 poles crossing a branch to a white oak, red oak and sugar tree; thence N. 7. E. 552 poles passing the southeast corner of said Duncans survey No. 3444 and with his line crossing the creek at 402 poles to the beginning.



Alexander Kerr
 James Stephens 3/106
 Joshua Sharp m.k.v.

James Galloway Jun^r D.S.
 December 11th 1805
 December 14th 1805



Surveyed for James Galloway Sur. 4813
500 acres of land on a military warrant No
5062 on Mill Creek: Beginning at a sugar
tree hickory and beech, the beech marked
I.G.K. 92 poles N 85 E from the mouth of Otter
creek, running S. 7. W 190 poles crossing Mill
creek at 40 poles to two sugar trees an ash
and lynn, thence N. 83. W. 250 poles crossing
Otter Creek at 190 poles to a lynn ash and
buckeye, thence N. 7. E. 320 poles crossing a
branch at 80 and on at 280 poles to two
sugar trees and a buckeye; thence S. 83. E. 250 poles crossing Mill
creek to two buckeyes an ash and lynn; thence S. 7. W 130 poles to
the beginning.

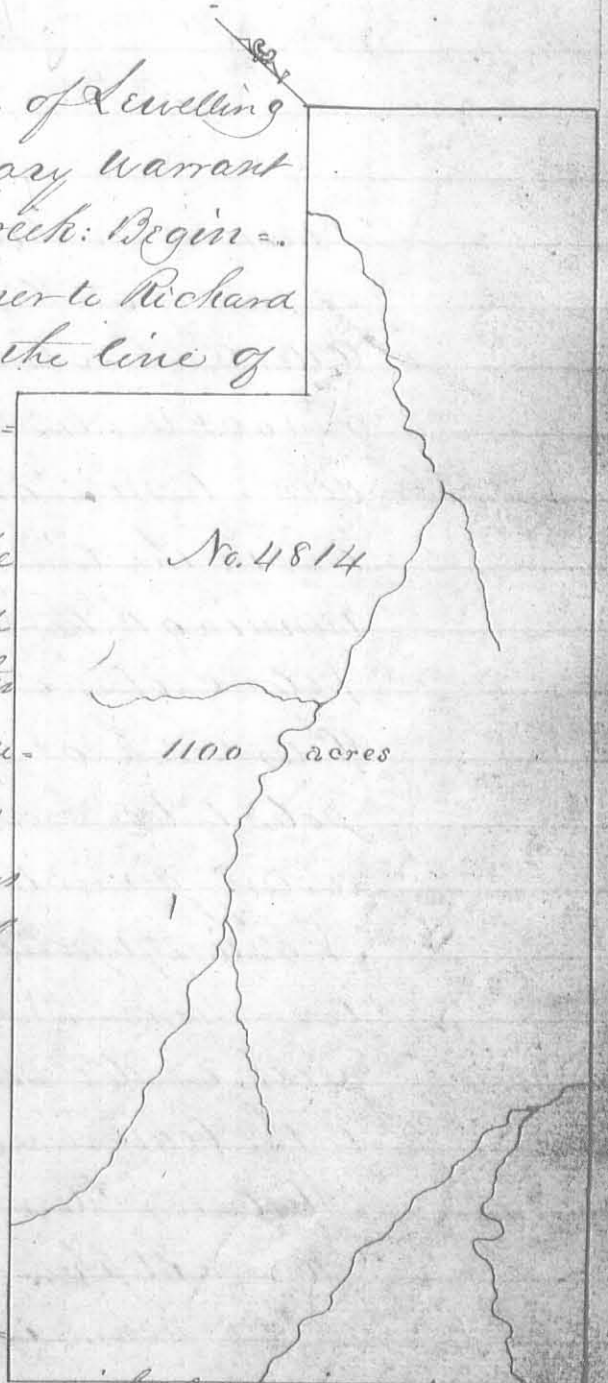
Alexander Kerr 3
James Stephens 3 C.B.
Joshua Sharp. M.K.O.

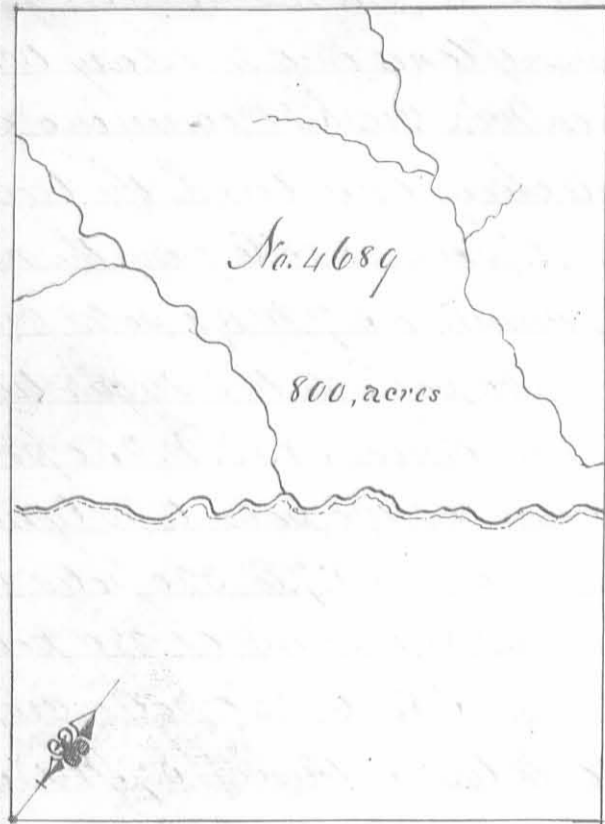
James Galloway Sur. 4813
December 12th 1805
December 14th 1805

Survey as for the Representative of Levellin
Jones 1100 acres of land on a military warrant
No. 5066 on the waters of Darly's Creek: Begin-
ning at three hackberries westerly corner to Richard
Stephensons survey. No 2669 and in the line of
Peter Meanyfolds survey No 2833 run-
ning with Meanyfolds line S. 52. W.
150 poles crossing a branch to a stake
in a prairie southerly corner to said
Meanyfolds survey, thence with another
of his lines N. 38 W 150 poles to two su-
gar trees, an ash and walnut in said
line and Easterly corner to Henry Whiting's
survey No 102, thence with Whiting's line S
52 W. 572 poles crossing a branch at 430
poles to a red oak and sugar tree; thence
S. 38. E. 300 poles crossing a branch at 130
poles and a creek at 270 poles to three
white oaks; thence N 52 E. 662 poles
crossing the creek to a stake in a prai-
rie in the line of Stephensons survey; thence with his line N. 38 W
150 poles to the beginning.

Alexander Kerr 3
James Stephens 3 C.B. Joshua Sharp. M.K.O.

James Galloway Sur. 4814
December 12th 1805
December 14th 1805





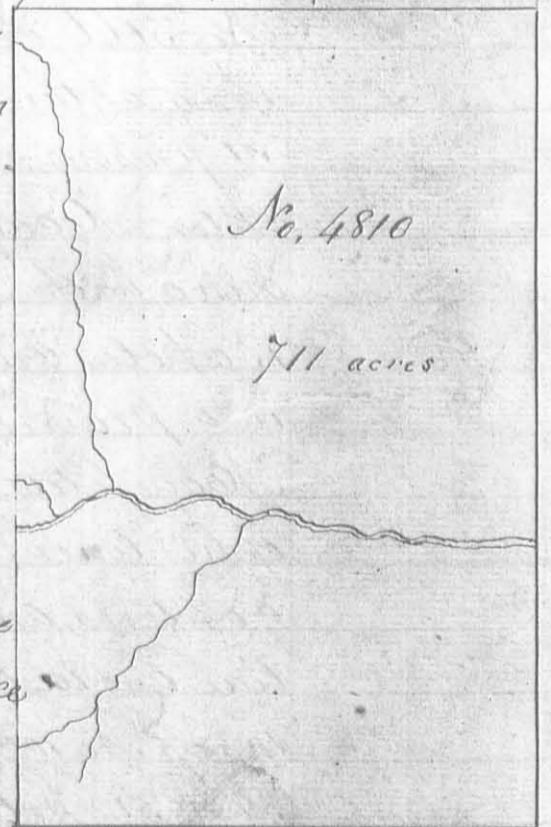
Surveyed for William Croghan 800 acres of land on two Military Warrants No. 211, 1437 and part of No. 369 on Otter creek; beginning at three hickories northerly corner to Philip Slaughter's Survey No. 3154 running N. 52, E. 305 poles to an ironwood lynn and buckeye, thence N. 38, W. 420 poles crossing a branch at 38, Otter creek at 154 and a branch at 180 poles to two buckeyes and a hickory; thence S. 52, W. 305 poles crossing a branch at 118 poles to two beeches and an ash; thence S. 38, E. 420 poles crossing several branches and Otter

creek to the beginning.

Alexander Kerr, 3
James Stephens 3 66
Joshua Sharp M. S. R.

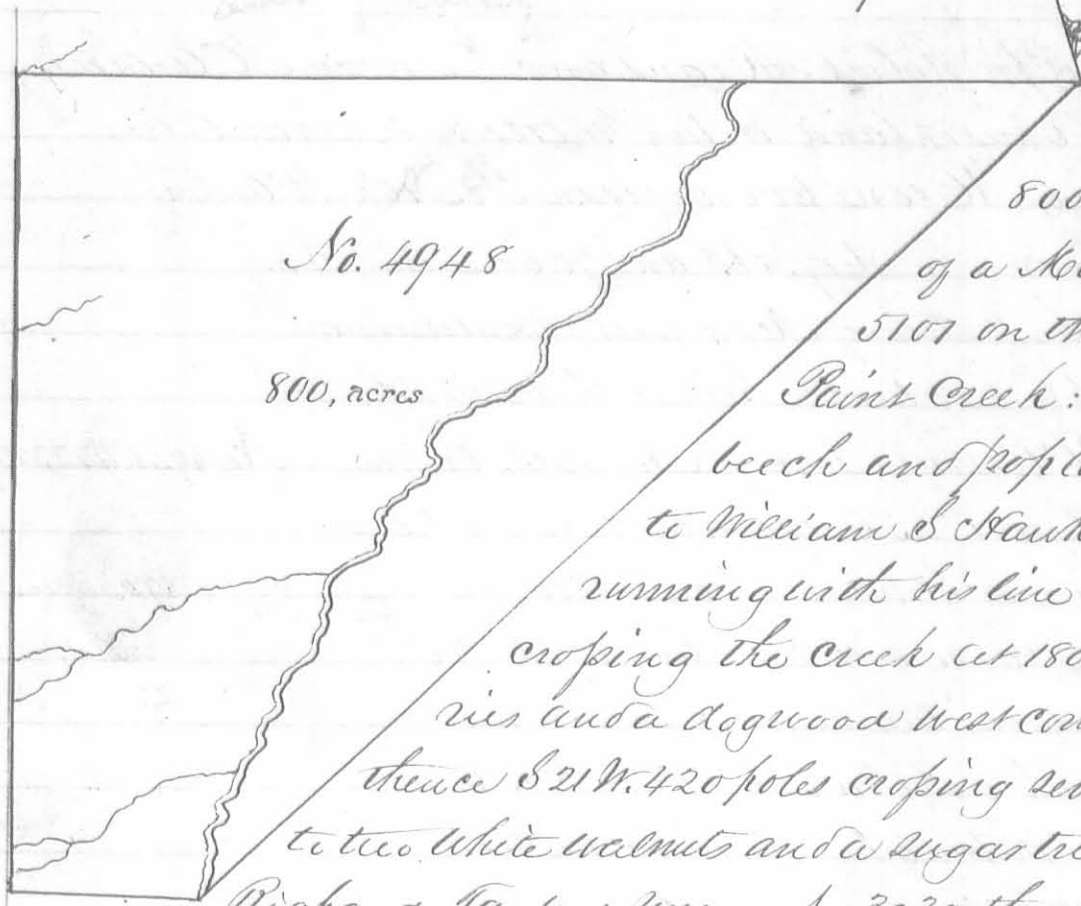
James Galloway Jun. D. S.
December 12th 1805
December 14th 1805

Surveyed for Richard Call 711 acres of land on part of a Military warrant No. 4974 on Otter Creek, a branch of Mill Creek; Beginning at two buckeyes and a hickory northerly corner to William Croghan's Survey No. 4689 and in the line of said Call's survey No. 4809 running with Croghan's line S. 38, E. 420 poles, crossing a branch at 160 and at 240 Otter Creek at 276 and a branch at 282 poles to two Ironwoods, a lynn and buckeye easterly corner to said Croghan's survey; thence N. 52 E. 271 poles to two ashes and a sugar tree; thence N. 38 W. 420 poles crossing the creek at 160 poles, to three sugar trees; thence S. 52, W. 271 poles to the beginning.



Alexander Kerr 3
James Stephens 3 66
Joshua Sharp M. S. R.

James Galloway Jun. D. S.
December 12th 1805
December 14th 1805



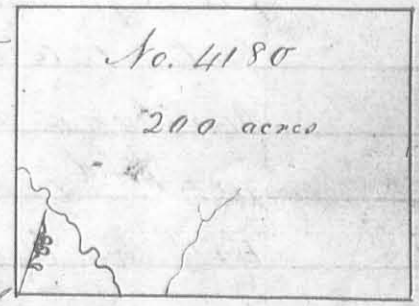
Surveyed for Robert Means

800 acres of land on part of a Military warrant No 5107 on the rocky fork of Paint Creek: Beginning at a beech and poplar Southeast corner to William S Hawkins survey No. 1936 running with his line N. 69. W. 554 poles crossing the creek at 180 poles to two hickories and a dogwood West corner to said Hawkins thence S 21 W. 420 poles crossing several small branches to two white walnuts and a sugar tree North corner to Richard Taylors survey No 3030, thence with his lower line S. 46. E. 98 poles to two elms and two sugar trees on the Northwest bank of the creek; thence N. 68. E 626 poles crossing the creek to the beginning.

Thomas McDonald
James Tompkins
John McDonald mkr

Duncan McArthur D.S.
October 16th 1806
December 4th 1806

Surveyed for John Doherty 200 acres of land on a Military warrant No. 4775 on the waters of Scioto River: Beginning at two beches and a sugar tree Northwest corner to Matthew Bonners survey No. 10919 thence N. 12. W. 154 poles crossing a branch at 68 poles passing four beches at 100 poles to an ash and beech; thence N. 78 E. 208 poles to a beech and hickory Northwest corner to Nathaniel Measies survey No 10801, thence S. 12. E. 154 poles to a beech southwest corner to Measies in the line of Bonners said survey; thence S. 78. W 208 poles crossing a branch at 134 and one at 154 poles to the beginning.



Francis Thompson
David McArthur
Matthew Bonner mkr.

Thomas J. McArthur D.S.
November 1st 1822
November 22nd 1822

Surveyed for Robert Means and Duncan McArthur
 ap^{ca} 870 acres of land on two Military Warrants and
 part of two; Means 600 acres on No. 5101, McArthur
 270 acres on No 5617, 5618 and 70 acres on No.
 5338 on the waters of Mead river. Beginning
 at a maple and two beeches North corner to,
 said McArthurs survey No. 4413; thence
 with his line S. 25 E 140 poles to a stake
 in the line of Samuel Davis survey
 No 3216; thence with said line S. 75 E 60
 poles to a sugar tree corner to said survey
 thence with another of his lines N. 15 E
 168 poles passing his northeasterly cor-
 ner at 118 poles to a sugar tree red
 elm and small black walnut;
 thence N. 65 E. 206 poles crossing sever-
 al drains to a sugar tree; thence N. 50 E
 316 poles to a stake in the line of John
 McDonalds survey No. 5088, thence with
 said line N. 38. W. 100 poles to two hickories
 and a beech northwesterly corner to said
 survey in the line of Thomas Kolts survey
 No 2674; thence with said line S. 30 W. 207
 poles to a buckeye white walnut and ash
 southeast corner to said survey and easterly cor-
 ner to David Bradfords survey No 3136; thence
 with his line S. 57 1/2 W. 315 poles crossing several
 branches and a lynn easterly corner to John Evans
 survey No 10424 & 10467; thence with his line S. 31 1/2 W
 77 poles to a dogwood ash and beech corner to said survey and
 Northeastery corner to said Evans survey No. 10423, thence with
 said line S. 15 W. 400 crossing several drains to a sugar tree and small
 hickory corner to said survey, thence with another of his lines South 252 poles to
 a stake in said line, thence East 18 poles to two dogwoods and an elm southwesterly corner
 to James McMatts survey No 4195 & 4604; thence with his line North 252 poles to
 a white walnut, ash and sugar tree corner to said survey; thence with another
 of his lines and with the line of said McArthurs said survey N. 15 E. 228
 poles crossing a small branch to the beginning.



Thomas Dickinson
 James Monroe
 Thomas J. McArthur M.k.r.

Duncan McArthur D.S.
 May 3rd 1822
 April 22nd 1823

This I think is an error. It should read 200 acres instead of 270 acres. H.B.