

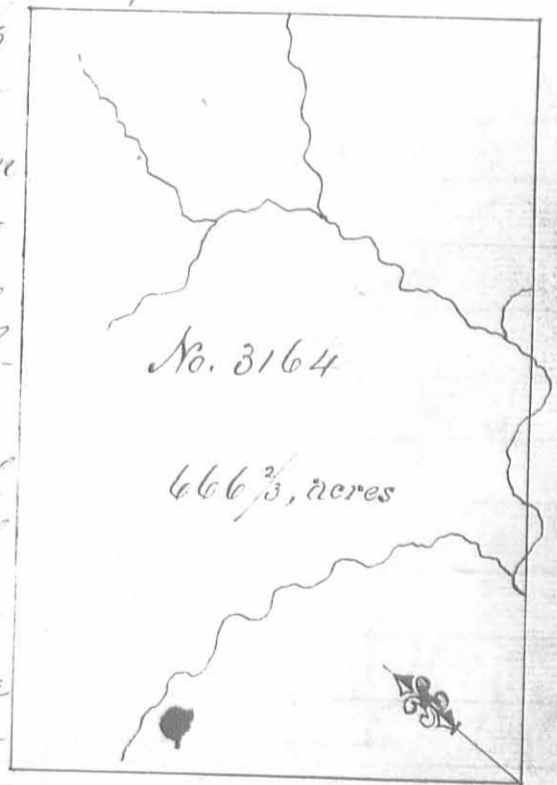
Surveyed for Layton Yancey 888 $\frac{2}{3}$ acres of land on part of a Military warrant No. 2921 on the waters of the Morani. Beginning at an ash, lynn and two beech southwest corner to said Yanceys survey No. 3321, running with his line N. 10. W. 400 poles crossing two branches to an ash, Ironwood and dogwood northwest corner to said Yanceys survey, thence S. 80 W. 356 poles crossing a branch at 100 and one at 240 poles to two ash and a red elm; thence S. 10. E. 400 poles crossing

two branches to an ash elm and ironwood; thence N. 80. E. 356 poles to the beginning.

Peter Murphy $\frac{2}{3}$
 William Boyd $\frac{2}{3}$ C. C.
 John Brittle m.k.e.

Lucas Sullivan S. S.
 April 3^d 1799
 October 3^d 1799

Surveyed for Philip Clayton of 666 $\frac{2}{3}$ acres of land on a Military Warrant No. 4322 on the waters of Bearas run a branch of Darby's Creek. Beginning at a large white ash lynn and sugar tree Northwest corner to Philip Slaughters survey No. 3154, running with his line N. 52. E. 400 poles crossing a branch several times to three hickories. North east corner to said Slaughters survey, thence N. 38. W. 267 poles crossing a branch to three beechs, thence S. 52. W. 400 poles to two beechs, thence S. 38 E. 267 poles to the beginning.



George Pennitt $\frac{2}{3}$
 George Hollaway $\frac{2}{3}$ C. C.
 Abraham Riddle m.k.e.

Lucas Sullivan S. S.
 September 30^m 1799
 October 4th 1799

1
 389 1/2 acres
 No. 3688
 389 acres

Surveyed for Layton Gancey 389 acres of land on part of a Military warrant No 2921 on the waters of Darby's creek: Beginning at two beech and a sugar tree southwest corner to David Duncans survey No 479, running with his line N. 37. W. 398 poles to two beech's Northwest corner to said Duncans survey, thence S. 53. W. 156 poles to two beech's; Thence S. 37. E. 398 poles to two beech and a sugar tree, Thence N. 53 E. 156 poles to the beginning.

Peter Murphy
 William Boyd 3/66
 John Britte mkr.

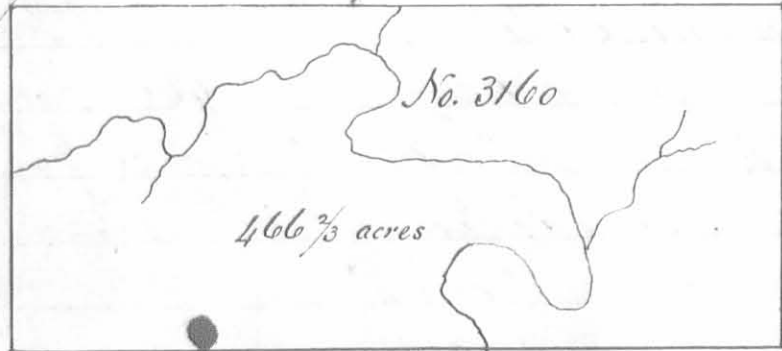
Lucas Sullivant D.S.
 September 18th 1799
 October 3rd 1799

Surveyed for Philip Slaughter 150 acres of land on part of a military warrant No. 69 on the waters of Beaver run a branch of Darby's creek Beginning at two beech's southwest corner to George McCredie's survey No. 3161, running S. 52, W. 178 poles to a walnut ash and poplar; thence N. 38. W 135 poles to a beech and sugar tree thence N. 52, E. 178 poles to two beech's northwest corner to said McCredie's survey; thence with his line S. 38. E. 135 poles to the beginning.

No. 3159
 150 acres

Robert Silby
 Philip Motherstough 3/66
 Abraham Riddle mkr.

Lucas Sullivant D.S.
 September 17, 1799
 October 1st 1799

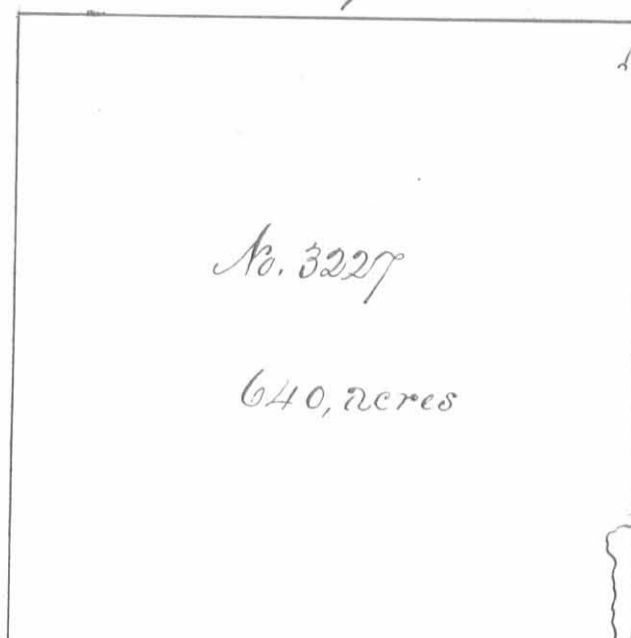


Surveyed for Levi Collingsworth 466 2/3 acres of land on two Military warrants No. 1490 & 1879 on Beaver run a branch of Darby's creek: Beginning at two buckeyes southwest corner to George McCredie's survey No

3155 running with McCredie's line N. 52 E 400 poles crossing Beaver run at 200 poles, to two sugar trees and an elm southeast corner to said McCredie's survey; thence S. 38, E. 178 poles to two beech's; Thence S. 52. W 400 poles crossing the run to two beech's, thence N. 38, W. 178 poles to the beginning.

George Donnell
 George Holoway 3/66
 Thomas Treacle mkr.

Lucas Sullivant D.S.
 September 27th 1799
 October 4th 1799



No. 3227

640, acres

Surveyed for Augustine J. Smith representative of Matthew Smith and 640 acres of land on part of Military warrant No. 4695 on the waters of Mead river; beginning at two hickories and a sugar tree Southwest corner to said Smith's survey No. 3226 and southeast corner to said Smith's survey No. 3225 running S. 21. E. 320 poles crossing a branch at 26 poles to a walnut, ash and elm on the side of a branch; thence S. 69. N.

320 poles to two white oaks; thence N. 21. W. 320 poles to two hickories a black oak and sugar tree southwest corner to said Smith's survey No. 3225; thence with said line N. 69. E. 320 poles to the beginning.

William Proctor

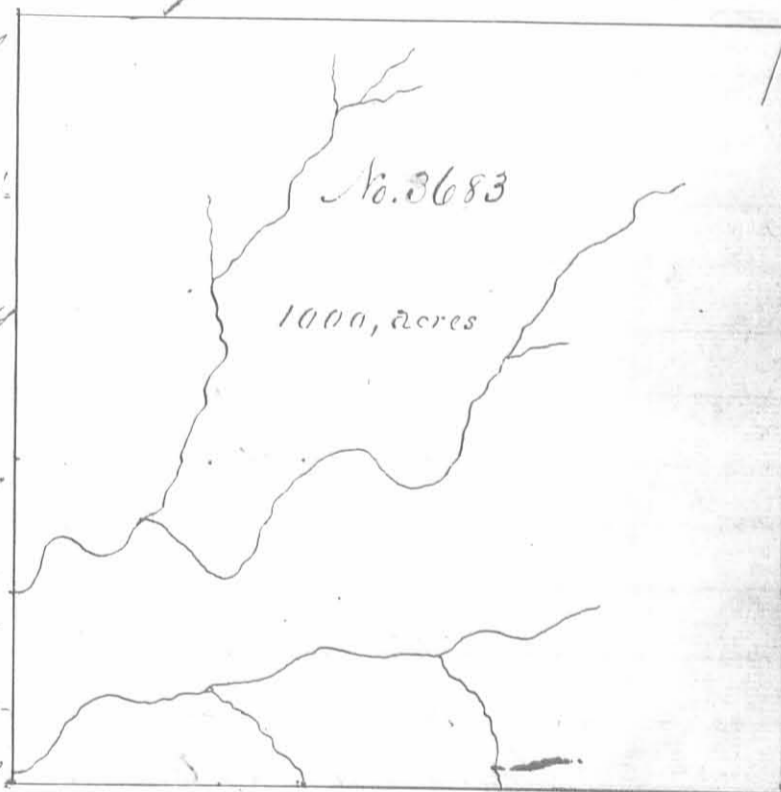
Gregory Fagans 3 C.C.

Philip Motherstough, Mkr.

Lucas Sullivan D.S.

July 1st 1798October 5th 1799

Surveyed for Robert Power 1000 acres of land on part of a Military Warrant No. 1775 on the waters of the Miami: Beginning at a red oak white oak and hickory Northwest corner to William Cochran's survey No. 3439 running with Scott's line S. 10. E. 400 poles to two hickories and a sugar tree Southwest corner to said Cochran's Survey; thence S. 80. W. 400 poles crossing several branches to two lymus, two sugar trees and an Elm on the side of a branch; thence N. 10. W. 400 poles crossing a branch at 100 poles to a red oak hickory and sugar tree; thence N. 80. E. 400 poles passing the southwest corner of John Scott's survey No. 3442 and with his line to the beginning.



No. 3683

1000, acres

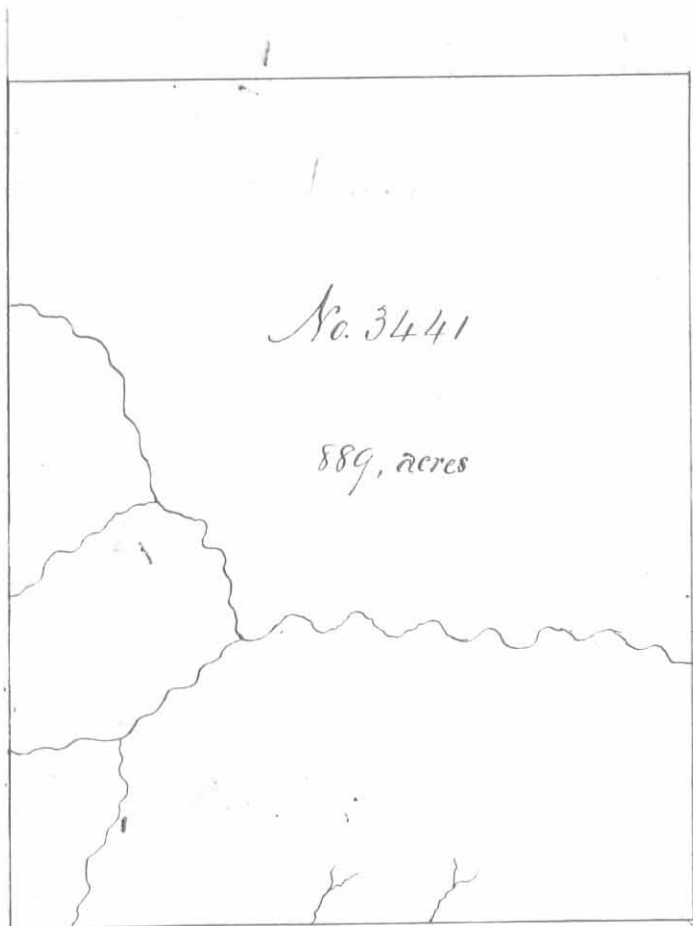
Robert Silvy

Philip Motherstough 3 C.C.

Abraham Ruddle Mkr.

Lucas Sullivan D.S.

September 17th 1799October 4th 1799



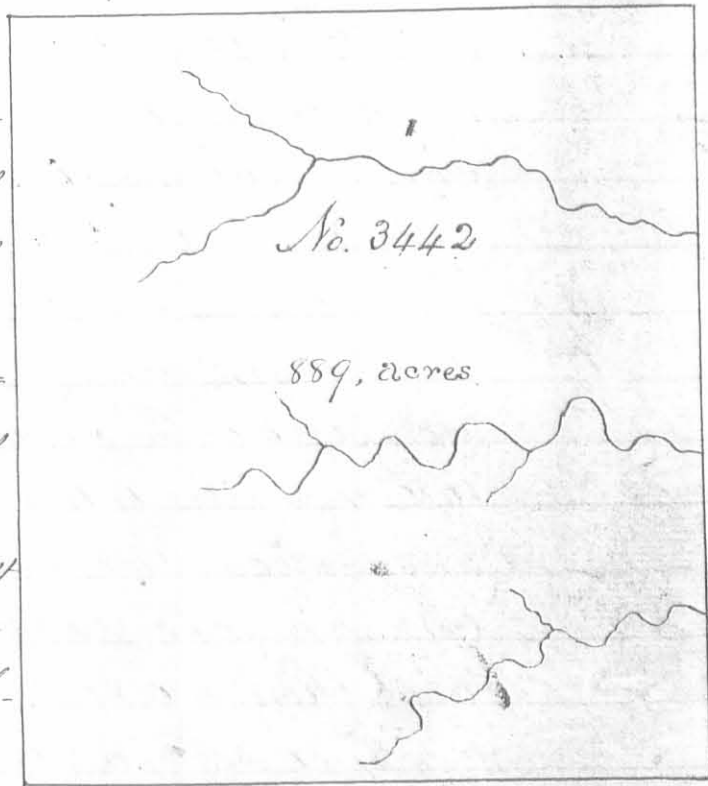
Surveyed for John Scott 889 acres of land on part of a Military Warrant No. 3187 on the waters of Scioto: Beginning at a white oak hickory and ash southwest corner to William Millers survey No 3327 running with his line N. 10 W. 400 poles crossing a branch to a buckeye hickory and sugar tree Northwest corner to said Miller; thence S 80. N. 356 poles to a beech large white oak and ash; thence S. 70. E. 400 poles crossing several drains to three lymms from one root; thence N. 50 E. 356 poles crossing several drains to

the beginning.

Philip Wothersloake ³ mms
Robert Siley ³ mms C.C.
John Brittle mkr

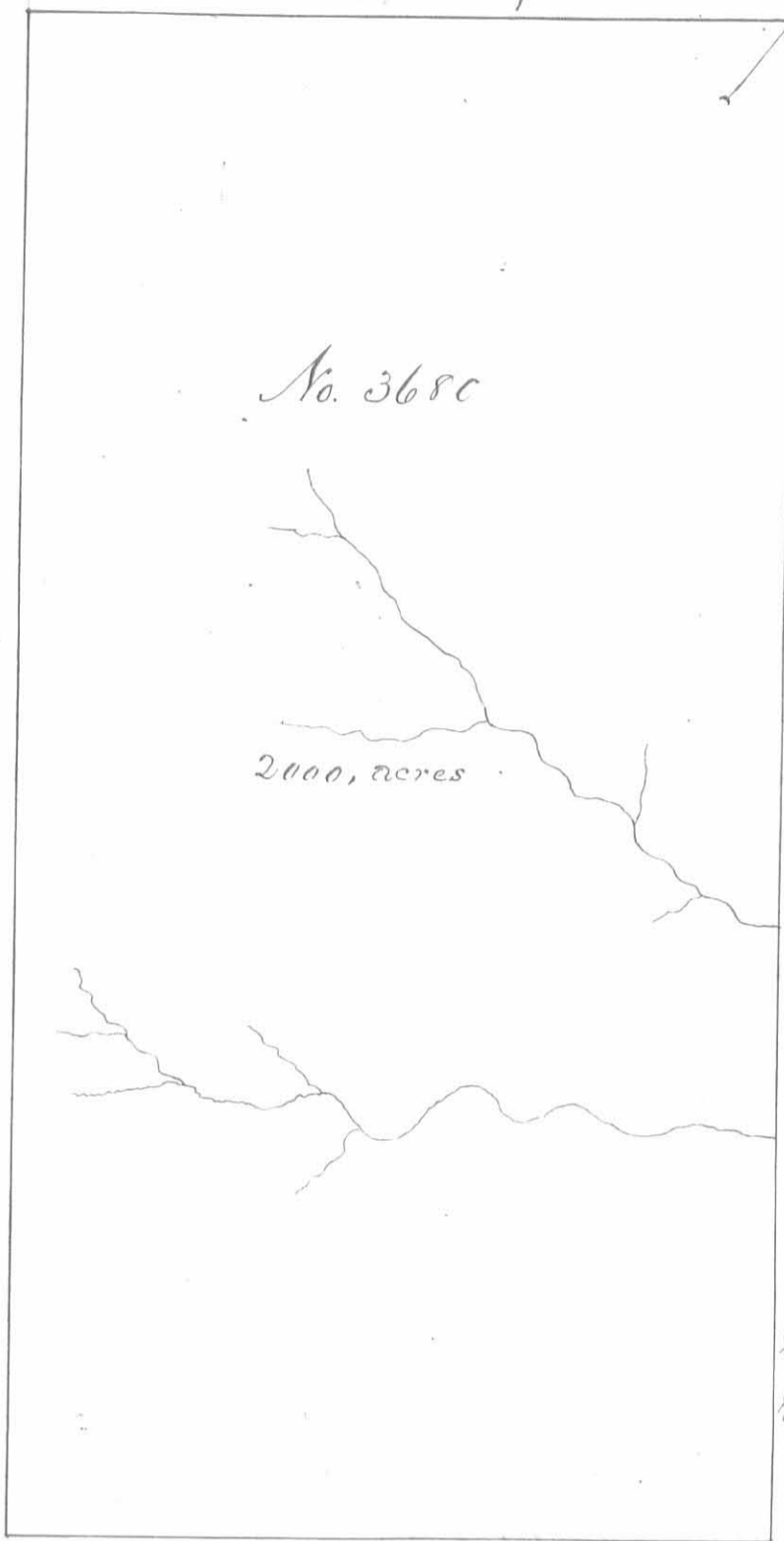
Lucas Sullivan D.S.
September 14th 1799
September 30th 1799

Surveyed for John Scott 889 acres of land on part of a Military Warrant No. 3187 on the waters of Scioto: Beginning at three lymms from one root, south west corner to said Scotts survey No. 3441 running with his line N. 10, W 400 poles crossing several drains to a beech large white oak and ash Northwest corner to said Scotts former survey thence S. 80. N. 356 poles to two hickories and a sugar tree; thence S 10 E 400 poles to two sugar trees and a white walnut; thence N. 50. E. 356 pole to the beginning.



Peter Murphy ³ mms
William Boyd ³ mms C.C.
John Brittle mkr

Lucas Sullivan D.S.
September 14th 1799
September 30th 1799



Surveyed for Robert Power
 2000 acres of land on part of
 a Military Warrant No. 1775,
 on the waters of Beaver Run
 a branch of Darby's Creek:
 Beginning at a fig tree, ash
 and hickory Northwest corner
 to George McCordis Survey
 No. 3155 running with his
 line, passing his Southeast cor-
 ner S. 38. E. 800. poles crossing
 two branches to two Sugar trees
 in the line of Richard Stephen-
 sons Survey No. 3163; Thence
 with Stephensons line pass-
 ing his Northwest corner S
 52, W. 400 poles to two Sugar
 trees and a beech; thence
 N. 38, W. 800 poles to an ash
 and lynn; thence N. 52, E.
 400 poles to the beginning.

George Bennett
 George Holloway & Co. Lucas Sullivan & S.
 Thomas Peacle Mkr - September 17th 1799,
 September 30th 1799

Surveyed for Richard Stephenson heir at
 law to Hugh Stephenson dec^d 800 acres of
 land on part of a Military Warrant No
 2988 on Darby's Creek: Beginning at two Ma-
gartrees on the west bank of the west bank
 the creek in the line of Lucas Sullivants
 Survey No. 3681, running N. 53 E 85 poles
 crossing the creek to a sugar tree and
 beech in said line; thence N. 37, W. 398 poles
 to two beech; thence S. 53 W. 322 poles crossing
 the creek at the mouth of Beaver run to two su-
 gar trees; thence S. 37 E. 398 poles, crossing several
 branches to a hickory and sugar tree in said Sullivant line; thence with said line N. 53
 E. 237 poles to the beginning.



George Bennett
 George Holloway & Co.
 Thomas Peacle Mkr.

Lucas Sullivan & S.
 April 10th 1799
 October 1st

No. 3753

1000, acres

Surveyed for Lucas Sullivant
 upon 1000 acres of land on part of a
 Military warrant No. 4732 on the
 waters of Braverum a branch of
 Darby's Creek: Beginning at a large
 ash, sugar tree and lynn, northwest
 corner to Philip Slaughters Survey No
 3154 and Southeast corner to George
 McCordie's survey No. 3161 running
 with Slaughters line S. 38. E 400 poles
 to a poplar ash and hickory south
 west corner to said Slaughters Survey
 and Northeast corner to Robert Powers

Survey No. 3680, thence with his line S. 52 W. 400 poles to an ash and lynn
 Northwest corner to said Powers Survey; thence N. 38 W. 400 poles to a walnut
 ash, and poplar, southwest corner to said Slaughters Survey No. 3159, thence
 with said line, passing his southeast corner and the southwest corner
 of said McCordie's survey and with McCordie's line N. 52 E 400 poles to
 the beginning.

Robert Silvey

Philip Mothorstough 3 C.C.

Abraham Ruddle Mkr.

Lucas Sullivant D.S.

September 30th 1799October 5th 1799

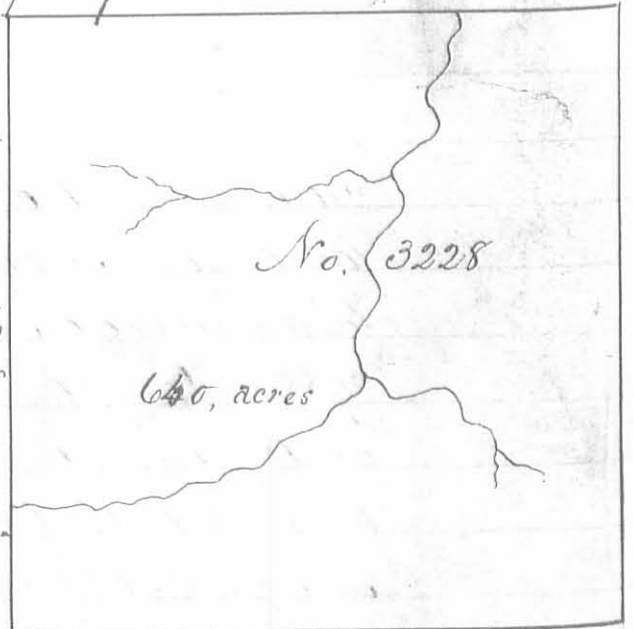
Surveyed for Augustine S. Smith rep-
 resentative of Matthew Smith, dec^d 640
 acres of land on part of a Military war-
 rant No. 4695 on the waters of Mad
 river: Beginning at two hickories and a
 sugar tree, southwest corner to said Smith's
 survey No. 3226, southeast corner to said
 Smith's survey No. 3225 and Northeast
 corner to said Smith's survey No. 3227, run-
 ning with the line of the last mentioned
 survey S. 21. E. 320 poles crossing a branch
 at 26 poles to a walnut, ash, and elm southeast corner to said Smith's
 survey No. 3227, thence N. 69. E. 320 poles, to two sugar trees, thence N.
 21 W. 320 poles to two elms southeast corner to said Smith's survey No. 3226;
 thence with said line S. 69. W. 320 poles crossing a branch at 80 poles to
 the beginning

William Proctor 3

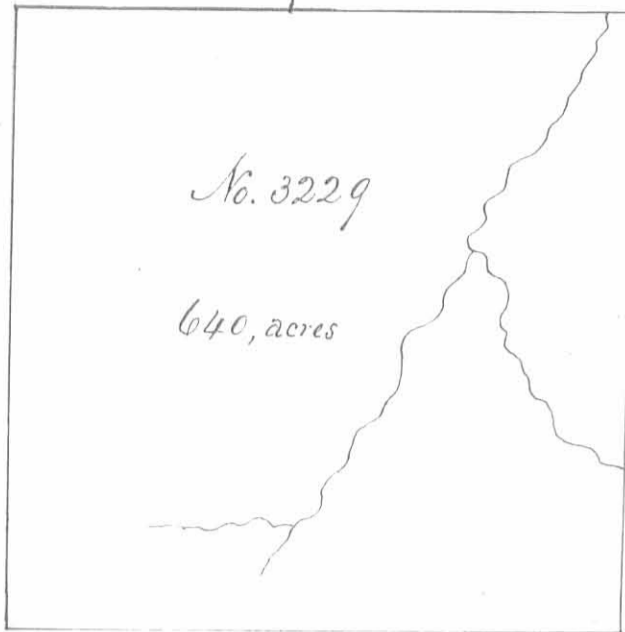
Grigsby Fagan 3 C.C.

Philip Mothorstough Mkr.

Lucas Sullivant D.S.

June 1st 1798October 5th 1799

Surveyed for Augustine S. Smith



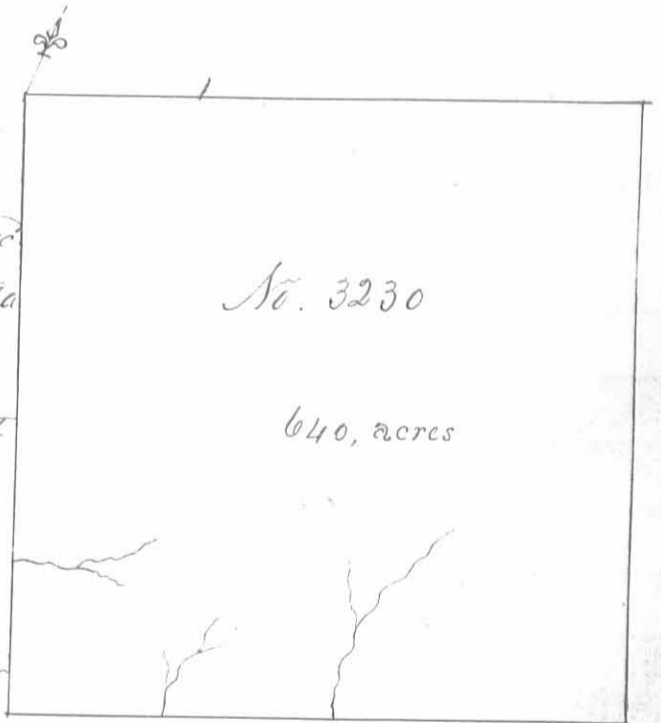
Smith representative of Matthew Smith Dec^d 640 acres of land on part of a military warrant No. 4695 on the waters of Mead river. Beginning at a walnut ash and elm southwest corner to said Smith's survey No 3228 and southeast corner to said Smith's survey No. 3227 running S 21 E. 320 poles crossing a branch at 240 poles to an ash, white oak hickory and sugar tree, thence S. 69. W 320 poles to two hickories an elm and ash on the side of a branch; thence N. 21 W. 320 poles to two white-

oaks southwest corner to said Smith's survey No 3227, thence with said line, N. 69. E. 320, poles to the beginning.

William Proctor 3
 Gregory Fagans 3 C.C.
 Philip Motherstough Mkr.

Lucas Sullivant D.S.
 June 1st. 1798
 October 5th 1799

Surveyed for Augustine S. Smith representative of Matthew Smith dec^d 640 acres of land on part of a Military Warrant No. 4695 on the waters of Mead river. Beginning at a walnut ash and elm southwest corner to said Smith's survey No 3228, southeast corner to said Smith's survey No 3227 and Northeast corner to said Smith's survey No. 3229, running with the line of the last mentioned survey S. 21. E. 320 poles crossing a branch at 240 poles to an ash, white oak, hickory and sugar tree southeast corner to said survey; thence N. 69. E. 320 poles crossing a branch at 80 and one at 170 poles to an ash and two mulberries; thence N. 21. W. 320 poles to two sugar trees southeast corner to said Smith's survey No. 3228, thence with the line of the same S. 69. W. 320 poles to the beginning.



William Proctor 3
 Gregory Fagans 3 C.C.
 Philip Motherstough Mkr.

Lucas Sullivant D.S.
 June 1st. 1798
 October 5th 1799

No. 3753

1000, acres

Surveyed for Lucas Sullivant
 approx 1000 acres of land on part of a
 Military warrant No 4732 on the
 waters of Bearers run a branch of
 Darby creek, beginning at a large
 ash, sugar tree and lynn, North
 west corner to Philip Slaughters sur-
 vey No 3154 and southeast corner
 to George McCordis survey No.
 3161 running with Slaughters line
 S. 38. E. 400 poles to a poplar ash
 and hickory southwest corner to
 said Slaughters survey and North
 east corner to Robert Powers survey No 3680, thence with his line
 S. 52. W. 400 poles to an ash and lynn, Northwest corner to said Powers
 survey, thence N. 38 W. 400 poles to a walnut ash and poplar South
 west corner to said Slaughters survey No. 3159; thence with said
 line, passing his southeast corner and the southwest corner of
 said McCordis survey and with McCordis line N. 52. E. 400
 poles to the beginning.

Robert Silby
 Philip

Lucas Sullivant D.S.
 September 30th 1799
 October 5th 1799

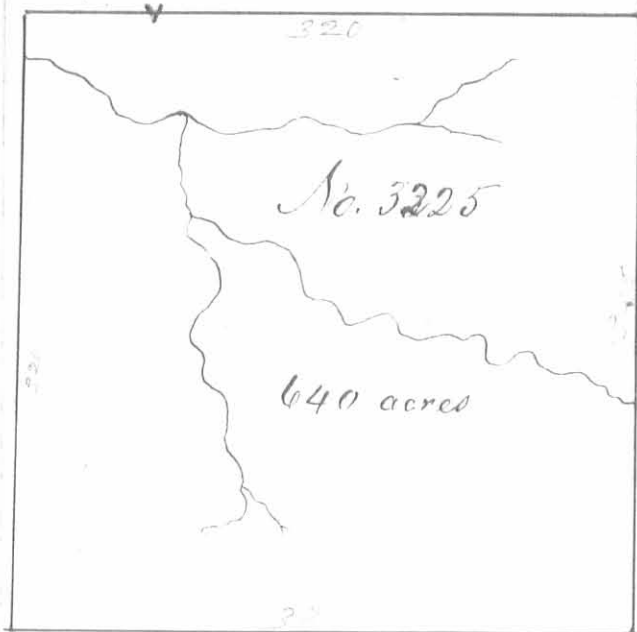
Surveyed for Augustine J Smith repre-
 sentative of Matthew Smith dec a
 640 acres of land on part of a Military
 warrant No. 4695 on the waters of
 Mad river. Beginning at a large red
 oak, black walnut and sugar tree south
 west corner to Holland Haneys survey
 No 3223, southeast corner to said Haneys
 survey No 3224 and northeast corner to
 said Smiths survey No. 3225 running
 with said line S. 21 E 320 poles crossing
 a branch at 200 poles to two hickories and a sugar tree southeast corner to said
 Smiths survey; thence N. 69. E 320 poles, crossing a branch at 240 poles to two elms
 thence N. 21 W. 320 poles crossing a swamp at 150 poles to a sycamore walnut and elm on the side of
 a branch, southeast corner to Haneys survey No 3223; thence with said line S. 69 W. 320 poles to the beginning.

William Proctor
 Gregory Fagans
 Philip Northborough niter.

No. 3226

640, acres

Lucas Sullivant D.S.
 June 1st 1798
 October 5th 1799



Surveyed for Augustine J Smith representative of Matthew Smith dec'd six hundred and forty acres of land on part of a military warrant No. 4695 on the waters of Head river: Beginning at a large red oak, black walnut and sugar tree southwest corner to Holland Nancy's survey No. 3223 and southeast corner to said Nancy's survey No. 3224, running S. 21. E. 320 poles crossing a branch at two hundred

poles to two hickories and a sugar tree, thence S. 69 W. 320 poles to two hickories a black oak and sugar tree, thence N. 21 W. 320 poles crossing the branch at 300 poles to two elms and a black walnut southwest corner to said Nancy's survey No. 3224 thence with his line N. 69. E. 320 poles to the beginning.

William Proctor

Grigsby Fagans & Co.

Philip Northrup M.R.

Lucas Sullivan D.S.

June 17th 1798

October 5th 1799

Surveyed for Alexander J Dandridge 1000 acres of land on a Military warrant No. 1225 on the waters of Head river; beginning at a sugar tree and white walnut, southeast westerly corner to said Dandridge's survey No. 3220, running with the line of said survey North 600 poles crossing several small branches to a beech, elm and small sugar tree northeastwardly corner to said survey thence East 267 poles, crossing several small branches to three lymes, two from one root a hickory and white walnut, thence South 600 poles crossing several branches to a black walnut, elm, lym and sugar tree on the top of a ridge, thence West 267 poles, crossing a branch at 50 poles to the beginning.



John McDonald

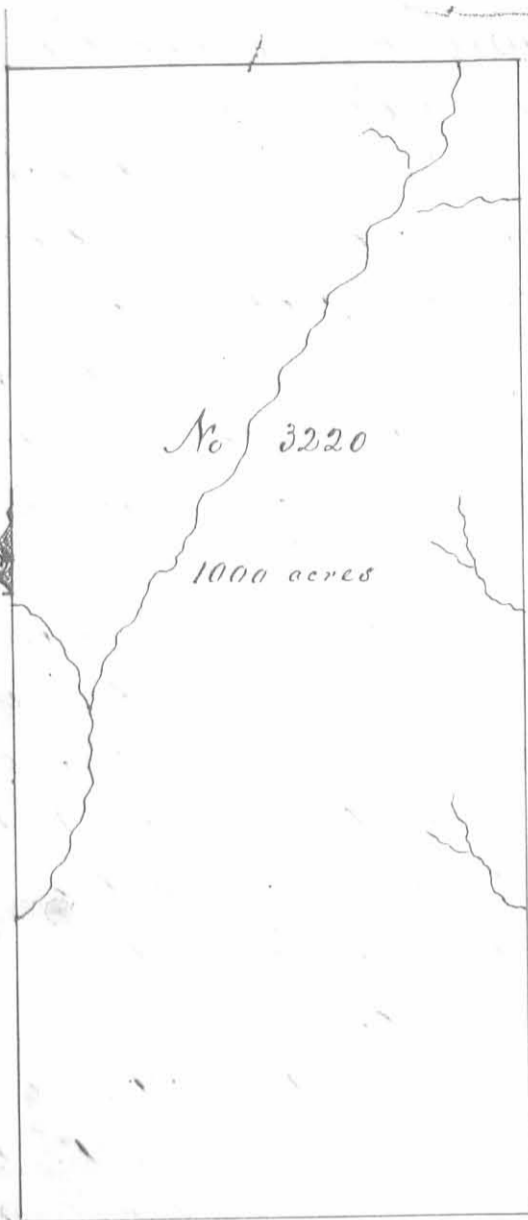
John Morris & Co.

George Cox M.R.

Duncan McArthur D.S.

November 22nd 1803

April 30th 1804

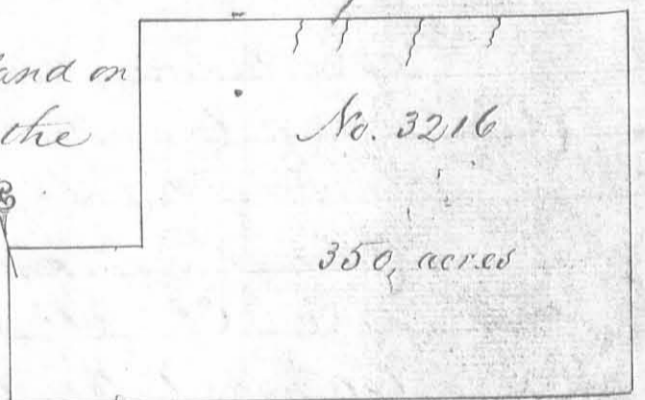


Surveyed for Alexander Sandridge 1000 acres of land on a Military warrant No. 1224 on the waters of the big Miami and Koa river. Beginning at a beech, white oak, sugar tree and cherry tree, the beech marked **MDDM:ST** in a bottom about three miles westwardly from Isaac James present improvement and about one and a half miles up a branch, that heads northeastwardly from an old Indian town and about eighteen poles west of said branch, running North 300 poles to a sugar tree beech and hickory on a branch thence east 267 poles, crossing a branch at 238 poles to a beech elm and small sugar tree, thence South 100 poles crossing several branches to a sugar tree and white walnut; thence west 267 poles to three white oaks; thence North 300 poles crossing a branch at 160 poles to the beginning.

John McDonald
John Morris
George Cox m.k.r.

Duncan McArthur D.S.
November 22nd 1803
April 30th 1804

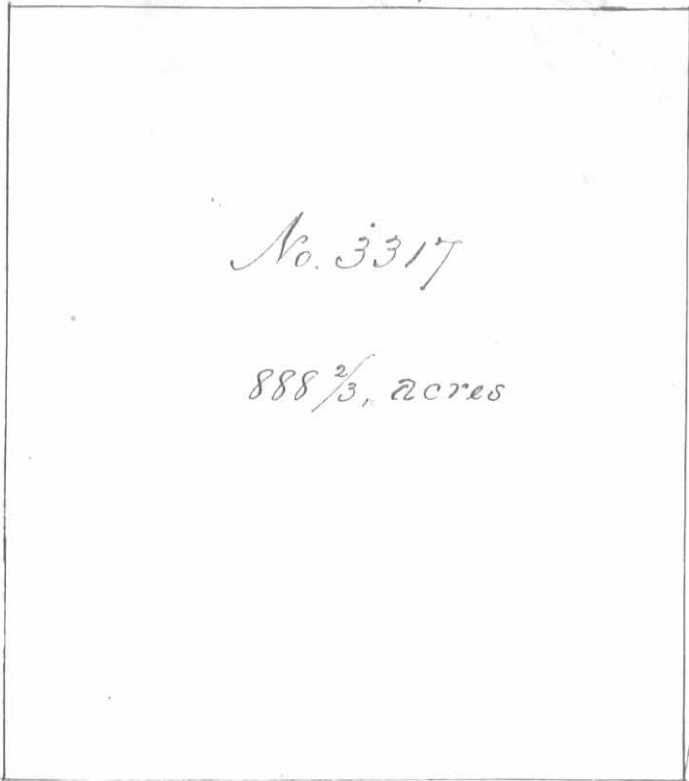
Surveyed for Samuel Davis of 350 acres of land on part of a Military warrant No. 4525 on the waters of Koa river. Beginning at two buckeyes and a hackberry on the road that leads from Isaac James to the head of Darbys creek and in the line of John



McDonalds entry No. 3214 running with McDonalds line S. 15. W. 82 poles to two sugar trees and an elm; thence S. 75 E. 321 poles to a large lynn and beech on the north side of a hill; thence N. 15. E. 200 poles crossing said road at 160 poles to a beech, sugar tree and cherry tree on the south side of a hill; thence N. 75 W. 252 poles crossing several small draws to two sugar trees and two beeches easterly corner to Thomas McDonalds entry No. 3215, thence with said line S. 15. W. 118 poles to a sugar tree southerly corner to said entry, thence with another line of said entry N. 75 W. 69 poles to the beginning.

John McDonald
John Morris
Samuel McArthur m.k.r.

Duncan McArthur D.S.
November 23rd 1803
April 30th 1804



No. 3317

888 ²/₃, acres

Surveyed for the Representatives of James Parks 888 ²/₃ acres of land on part of a Military warrant No. 4852: Beginning at two sugar trees and a white walnut, southwest corner to said Representatives survey No. 3316, running N. 10. W. 400 poles to two hickories and a sugar tree in the line of Layton Yanceys survey thence S. 80. W. 355 poles to two white oaks and a black oak; thence S 10 E 400 poles to a stake, thence N. 80. E. 355 poles to the beginning.

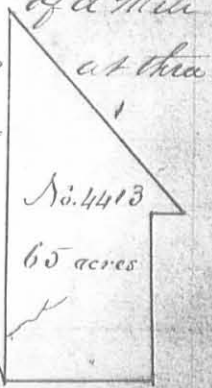
Peter Murphy ³/₃
 William Boyd ³/₃ M.C.
 John Brille M.C.

Lucas Sullivan D.S.

April 3^d 1799

May 8th 1806

Surveyed for Duncan McArthur 65 acres of land on part of a military warrant No. 5037 on the waters of Moad river. Beginning at three buckeyes, a forked white walnut and hickory Northwestly corner to James McNutt survey No. 4195 in the line of the representative of James Calderwoods survey No. 3137, running with McArthurs line S. 75. E. 80 poles to two sugar trees and an elm southwest corner to Samuel Davis survey No. 3216 thence with Davis line N. 15 E. 82 poles to two buckeyes and a hackberry, thence with another of his lines S. 75. E. 18 poles crossing a spring branch to two buckeyes and a hickory, thence N. 25 W. 140 poles to a maple and two bushes; thence S. 17. W. 190 poles crossing a branch at 160 poles to the beginning.

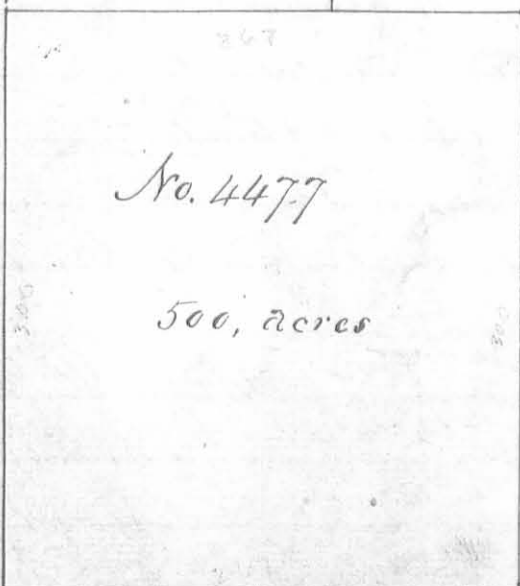


John McDonald ³/₃
 Colin McCollum ³/₃ M.C.
 John Arken M.C.

Duncan McArthur D.S.

September 2nd 1805

September 9th 1805



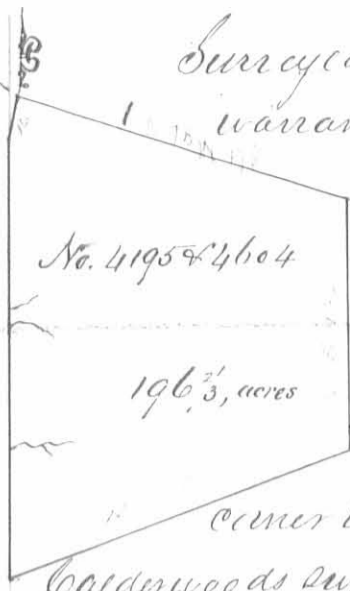
No. 4477

500, acres

Surveyed for Alexander Sandridge 500 acres of land on part of a Military warrant No. 1227 on the waters of Big Miami and Moad river; beginning at three white oaks southwest corner to McArthurs survey No. 3220 running with his line East 267 poles to a sugar tree and white walnut southeast corner to said Sandridges survey, thence North 300 poles to two hickories, thence West 267 poles to two hickories and a black oak, thence North 300 poles crossing a branch to the beginning.

John Minis ³/₃
 John McDonald ³/₃ M.C.
 George Cox M.C.

Duncan McArthur D.S.
 April 25th 1805
 May 1st 1806

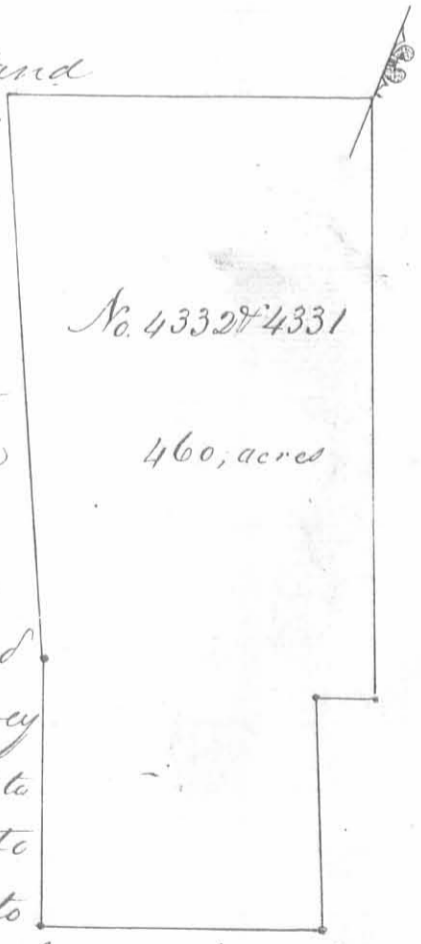


Surveyed for James McNeill 196 ²/₃ acres of land on part of a military warrant No 4878 on the waters of Mead river. Beginning at three buckeyes a hickory and forked white walnut south west corner to Duncan McArthur's survey No 4413 in the line of James Calderwoods survey No. 3137, running with Calderwoods line S. 45. W. 16 poles to a buckeye and white walnut or an ash and sugar tree southeast corner to said Calderwoods survey and Northeast corner to said Calderwoods survey No. 3138, thence with the line of the last mentioned survey South 232 poles crossing several spring branches to two dogwoods and an elm in the line of Thomas Parkers survey No 4497 thence with Parkers line N. 69 E. 185 poles to a small red oak hickory and two lymms thence N. 1 E. 132 poles to three small buckeyes and a large elm in the line of Samuel Davis' survey, No. 3216; thence with his line and with the line of said McArthur's survey N. 75. W. 176 poles to the beginning.

John McDonald
 Colin McCollum
 John Askew mkr.

Duncan McArthur D.S.
 September 2^d 1805
 September 16th 1805

Surveyed for Alexander Dimple 460 acres of land on part of a Military Warrant vizt. 360 acres on part of warrant No. 1642 and 100 acres warrant No 900 on the waters of Mead river. Beginning at a hickory and burr oak Northwesterly corner to John Means survey No. 4543 passing his southwesterly corner at 233 ¹/₃ poles and passing a black oak marked as a corner at 294 poles to a stake in a prairie in the line of Jesse Davis survey No 4524, thence with his line S. 70. W. 28 pole to a black jack and two burr oaks northwesterly corner to Davis' survey thence with another of his lines S. 20. E. 120 poles to a stake in a prairie, thence S. 70. W. 148 poles to a stake in a prairie, thence N. 20 W. 140 poles to three white oaks, two growing from one root, thence N. 23. W. 294 poles to two burr oaks and a white oak marked P, thence N. 70. E. 190 poles to the beginning.



William Pickrell
 Nathan Lundy
 Jeremiah Cobb mkr.

James Denny D.S.
 November 23^d 1804
 November 23^d 1804

Surveyed for
 John Campbell
 of 1200 acres of land
 on part of a Military War-
 rant No. 2274 on the waters
 of Mad river. Beginning
 at a hickory white oak
 and black oak in the line
 run by Isaac Sudder from
 the head of the little Miami
 towards the head of the Scioto
 river, thence with said line
 N. 20. W. 758 poles to a stake in
 the line of a survey in the name of
 Robert Armstrong No. 4284; thence
 with his line East 280 poles to a
 stake in Bowmans Cornfield and
 Northwest corner to Lawrence Butlers
 survey No. 4291, thence with his line
 South 146 poles to a black oak south
 west corner to said Butler, thence with
 another of his lines east 200 poles to a white oak and bur oak south
 east corner to said Butlers survey; thence S. 50. E. 130 poles to three black
 oaks and a white oak northwest corner to Samuel Smiths survey No.
 4182; thence with his line south 241 poles crossing two small bran-
 ches to a black walnut and white oak Northeast corner to Adam
 Deans survey No. 3672; thence with his line west 304 poles cross-
 ing two small branches to a forked white oak; thence with his
 line south 240 poles passing his southwest corner at 120 poles
 to two hickories southwest corner to Alexander Petros survey
 No. 4185; thence west 16 poles to the beginning.

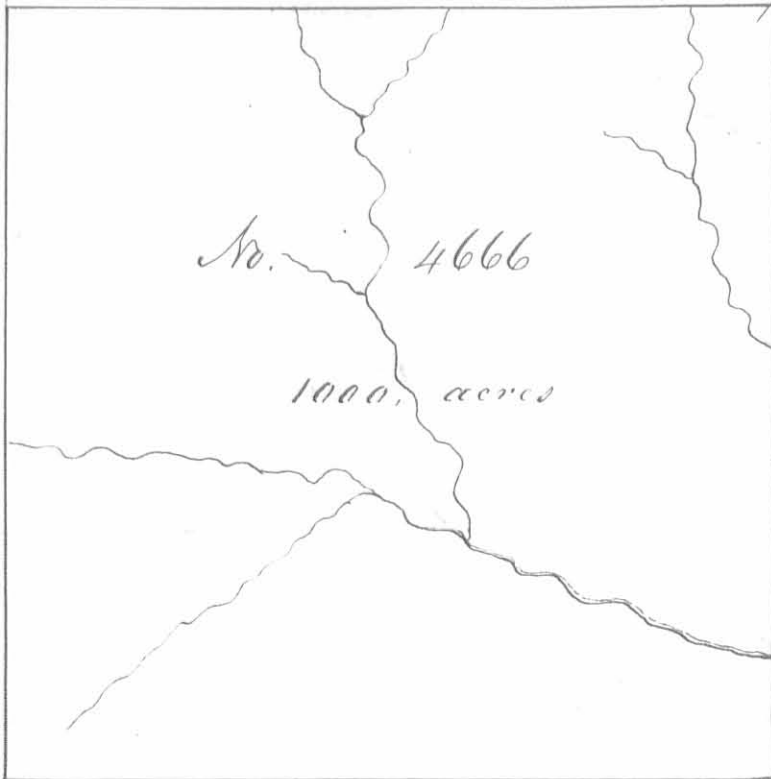
Ignatius Thompson 2
 Thomas Murfin 3
 John Murfin M.k.v.

John Obannon D.S.
 August 20th 1804
 September 18th 1804

No. 4544

1200 acres





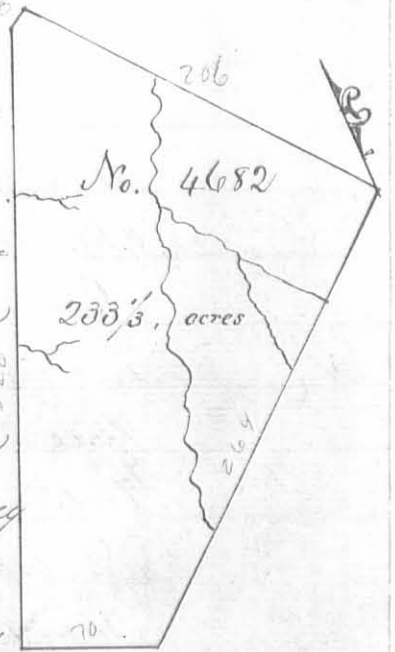
Surveyed for Thomas Prouden for
ap^o 1000 acres of land on a Milita-
ry warrant No. 5047 on the waters
of Darby's creek: Beginning at
three sugar trees westerly corner to
Benjamin Boipeau's Survey No
4658 running S 53 W 400 poles
crossing a branch at 42 one at
172 and one at 250 poles to a
blue ash two lymus and a white
oak on the east side of a branch
thence S. 37. E 400 poles crossing
a large branch at 224 poles

to two white oaks, an ash and elm; thence N. 53. E. 400 poles to a red
oak elm and sugar tree; thence N. 37. W. 400 poles crossing a creek at
162 poles to the beginning.

William Gibson
Henry Stearns C. C.
John Boipeau M. L. R.

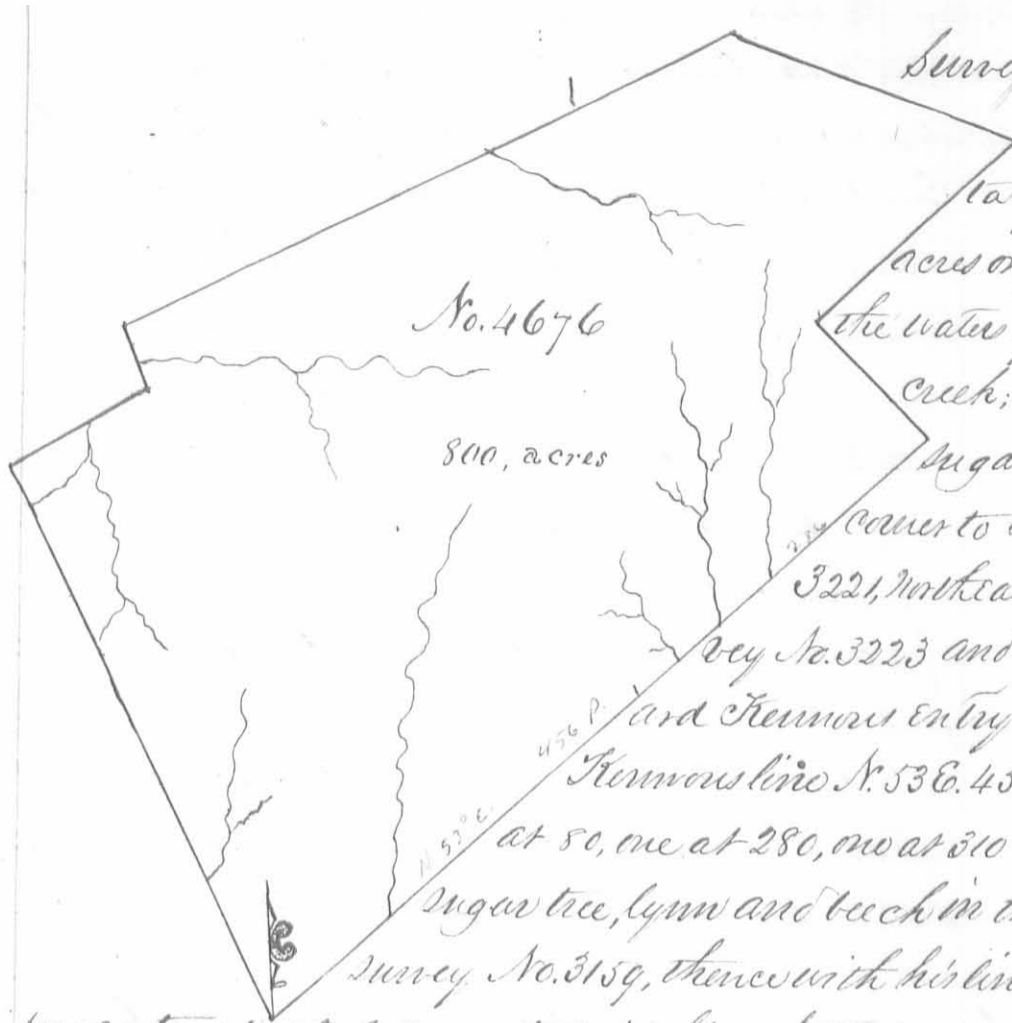
James Galloway Jun^r D. S.
May 6th 1805
May 7th 1805

Surveyed for William Agun ap^o 233¹/₃ acres of land
on a Military warrant No. 1315 on the waters of Mad
river and Darby's creek: Beginning at two sugar trees
and a large poplar northerly corner to George M^cCre-
die's survey No. 3161 in the line of Philip Clayton's sur-
vey No 3164 running with Clayton's line and course
thereof N. 38 W. 206 poles crossing a branch of Darby's
creek at 128 poles to a sugar tree red oak and poplar
in the line of the representative of Scwelling Jones survey
No. 4655, thence S 52 W. 8 poles to two beeches an elm
and poplar, corner to Benjamin Stubblefields survey
No. 3223, thence with his line S 25 W. 320¹/₂ Crossing several branches of
Mad river to two sugar trees a lymus and elm southerly corner to said Stub-
blefields survey in the line of Benjamin Boipeau's survey No 4676; thence with
Boipeau's line S. 65 E. 70 poles to a sugar tree easterly corner to said Boipeau's survey in the line
of Philip Slaughter's survey No. 3159; thence with Slaughter's line, passing his corner and with the
line of said M^cCreddie's survey N. 52 E. 264 poles crossing several branches of Darby's
creek to the beginning.



William Gibson
Henry Stearns C. C.
John Boipeau M. L. R.

James Galloway Jun^r D. S.
May 6th 1805
May 7th 1805



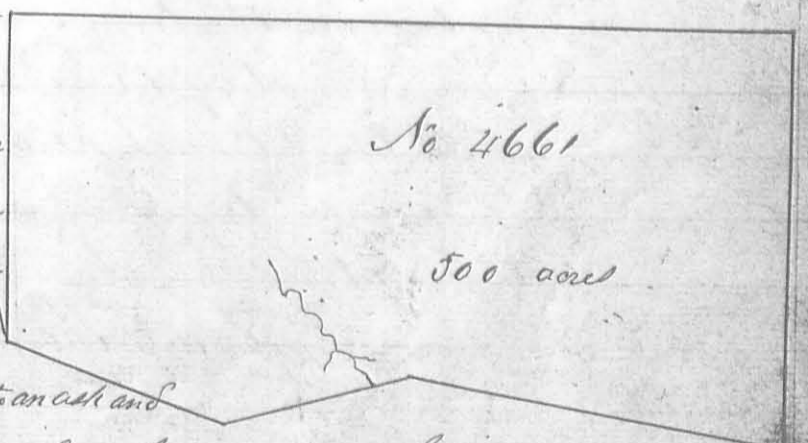
Surveyed for Benjamin Boipeau of
 800 acres of land on a mili-
 tary warrant No 5025 and 133 1/2
 acres on part of warrant No 5023 on
 the waters of Mad river and Oastys
 creek; beginning at an ash lynn
 sugar tree and beech southeast
 corner to Holland Hanceys survey No.
 3221, northeast corner to said Hanceys sur-
 vey No. 3223 and northwesterly corner to Rich-
 ard Kemmors entry No. 4570, running with
 Kemmors line N. 53 E. 456 poles crossing a branch
 at 50, one at 280, one at 310 and one at 346 poles to a
 sugar tree, lynn and beech in the line of Philip Slaughters
 survey No. 3159, thence with his line N. 38 W. 84 poles to two

sugar trees westerly corner to said Slaughters survey; thence with another of
 his lines N. 52 E. 140 poles to two sugar trees in said line, thence N. 65 W. 156
 poles, passing the southerly corner of Benjamin Stubblefields survey at 70
 poles and with his line to two sugar trees and a beech in said line and
 easterly corner to James McFarlands entry No 4663; thence with his
 line S. 69 W. 353 poles crossing a branch at 142 poles to two beeches and
 a sugar tree corner to said McFarlands survey and in the line of Thomas
 Parkers survey No. 4497, thence with his line S. 21 E. 40 poles crossing a
 branch to three beeches and a red oak southeast corner to said Parker
 survey, thence with another of his lines S. 69 W. 80 poles crossing a branch
 to two ashes, a beech, red oak and sugar tree in said line and Northeast
 corner to said Hanceys survey No. 3221; thence with said line S. 21 E. 320 poles
 crossing a branch at 20 one at 100 and one at 242 poles to the beginning.

William Gibson
 Army Survs 3 C.C.
 John Boipeau Mkr.

James Galloway Junr D.S.
 May 8th 1805
 May 7th 1805

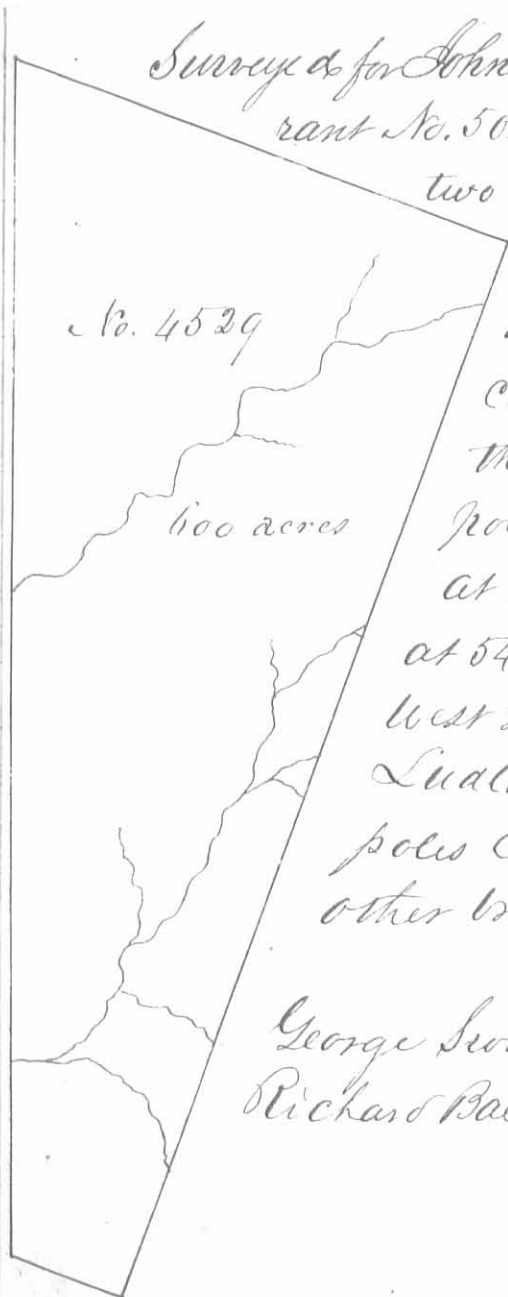
Surveyed for Thomas Threalt 500 acres of land on
 part of a Military warrant No 2050 the waters of Mad river
 Beginning 34 poles N. 15 E from the Southeastly corner of Sam-
 uel Davis's survey No 3216 at a beech and buckeye, run-
 ning S. 55 E. 120 poles to a beech and sugar tree; thence
 East 100 poles crossing a branch at 80 poles to a
 beech and dogwood, thence S. 65 E. 200 poles to a
 sugar tree and poplar; thence N. 15 E. 27 poles to an ash and
 beech, thence N. 75 W. 408 poles to an ash and sugar tree; thence S. 15 W. 170 poles to the beginning



Solomon M Collock
 John Ward
 C.C. + Mkr.

James Denny D.S.
 June 16th 1806
 September 3rd 1806

Surveyed for John Cole 600 acres of land on part of a Military warrant No. 5041 on the waters of the big Miami; beginning at two black oaks in Ludlow's line Northwest corner

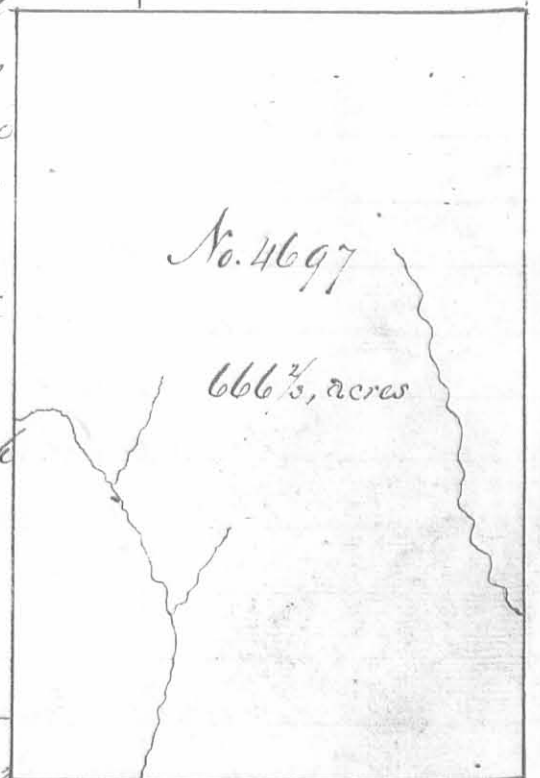


to Ezekiah Morton's survey No. 4498 running with his line East 163 poles to three white oaks corner to Alexander S Dandridge's survey No. 4478 thence with his line and course thereof North 580 poles crossing a branch at 68 one at 88 and one at 140, one at 276, one at 364 one at 370 and one at 548 poles to a sugar tree and Ironwood, thence West 280 poles to two bare oaks one marked I, G in Ludlow's line, thence with said line S. 20. E 620 poles crossing a branch at 270 poles and several other branches to the beginning.

George Swope 3
Richard Paldock 3 66 m.k.r.

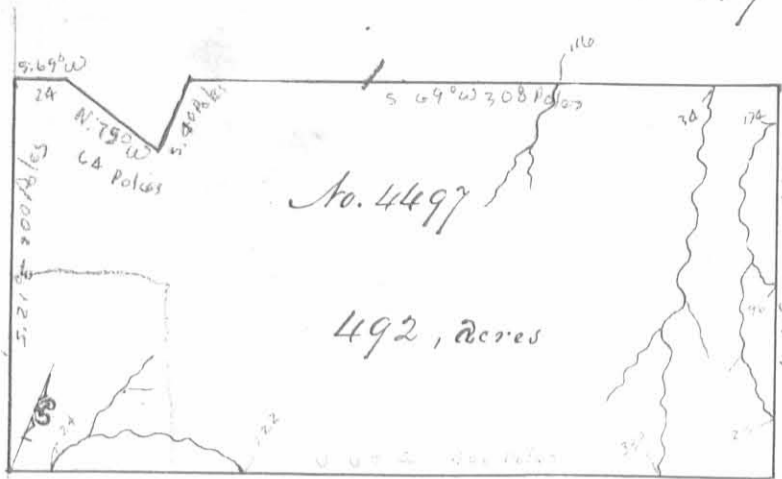
James Galloway Junr D.C.
September 19th 1804
September 26th 1804

Surveyed for Peter Pelham 666 $\frac{2}{3}$ acres of land on a Military warrant No. 4870 on the waters of Darby's Creek: Beginning at an elm sugar tree and red oak southerly corner to John Holmes survey No. 4263 and in the line of Thomas Browder Junr's survey No. 4661 running with Holmes line N. 38. W. 400 poles crossing a branch at 86 poles to a sugar tree and creek westerly corner to said Holmes survey, thence S 52. W. 207 poles to a hickory elm and sugar tree, thence S. 38. E. 400 poles crossing a large branch at 212 poles to two ashes and a sugar tree in the line of Duncan McArthur's survey No. 4699, thence with his line passing his corner and crossing the large branch at 68 poles to the beginning.



Alexander Kerr 3
James Stephens 3 66
Joshua Sharp m.k.r.

James Galloway Junr D.C.
November 19th 1805
December 14th 1805



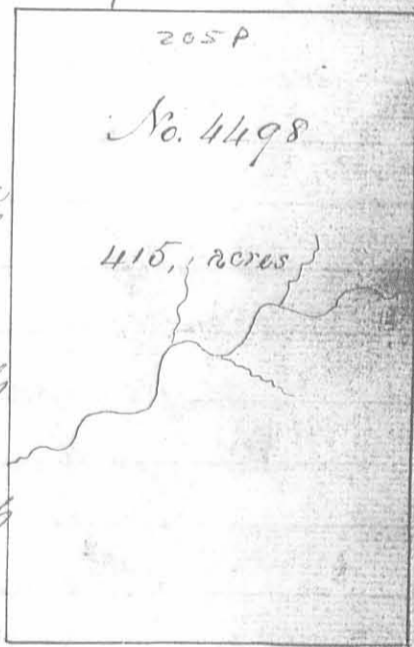
Surveyed for Thomas Parker
492 acres of land on part of a military
warrant No. 732 on the waters
of Mead river. Beginning at two
black oaks a red oak and cherry
tree Northwest corner to Holland
Hancey Survey No. 3221 running

N. 69° E. 400 poles crossing a branch at 24, one at 122 and one at
338 poles to three beeches and a red oak; thence N. 21° W. 200 poles
crossing a branch at 28, one at 96 and one at 174 poles to three su-
gar trees; thence S. 69° W. 308 poles crossing a branch at 34 and
one at 116 poles to three elms; thence south 40 poles to an elm
ash and burr oak; thence N. 75° W. 64 to a white oak and hick-
ory; thence S. 69° W. 24 poles to two white oaks and a hickory
thence S. 21° E. 200 poles to the beginning.

Solomon McCulloch 3
George McCulloch 366
William McCulloch Junr M.R.V.

James Denny D.S.
April 12th 1805
April 28th 1806

Surveyed for Ezekiah Weston 415 acres of
land on part of a Military warrant No. 660 on
the waters of Big Miami. Beginning at a large
white oak and beech marked INDDM.S.T. the
beginning corner to Alexander S Sandridges
Survey No. 3220 running West, 205 poles cross-
ing a branch at 106 and at 140 poles to
two black oaks; thence south 324 poles cross-
ing a branch to a black oak and white
oak; thence East 205 poles to a black
oak, thence North 324 poles to the beginning.



Solomon McCulloch 3
James Kerr 3 C.C. & M.R.

James Denny D.S.
June 16th 1806
September 2nd 1806

No. 4609

888 $\frac{2}{3}$ acres

Surveyed for Nathaniel Tyler heir at law to John Tyler dec^d 888 $\frac{2}{3}$ acres of land on part of a Military War- rant No. 3301 on the waters of Peaches Creek: Beginning at a Stake in a prairie southwesterly comes to said Ty- lers survey No 4608 running with the line of the said survey N. 52 E. 296 poles to two bur Oaks; thence S. 38. E 556 poles to two elms and a hickory thence S. 52. W. 256 poles to a black walnut elm and bur oak, thence N. 38. W. 556 poles to the beginning.

David Sroufe

Samuel Gallaway $\frac{3}{3}$ C. C.

Williams Township W. Va.

James Gallaway D.S.

November 15th 1807December 31st 1813

Surveyed for Samuel Finley, James Denny ap^{ts} and John Barrett 500 acres of land on part of three Military warrants in the following proportion viz^t Finley 235 acres on Warrant No. 1450, Denny 215 acres on Warrant No. 107 and Barrett 50 acres on Warrant No. 5067 on the waters of Mad river; beginning at a white oak sugar tree and two hickories southeast cor- ner to Augustine S. Smith's survey No. 3229 running S. 69 W. 281 poles with Smith's line to an elm, hickory and red oak, thence S. 21. E. 310 poles to a stake in the line of Gabriel Petersens survey No 4534, thence with his line N. 69 E. 61 poles to a stake, thence N. 21. W. 40 poles to a stake, thence N. 69. E 180. poles to an elm and white oak; thence S. 21 E. 40 poles to two elms, thence N. 69 E. 40 poles to a white oak and two dogwoods. Southwest corner to Benjamin Stubblefields survey No. 3231 thence with his line N. 21 W 310 poles to the beginning.

John Barrett

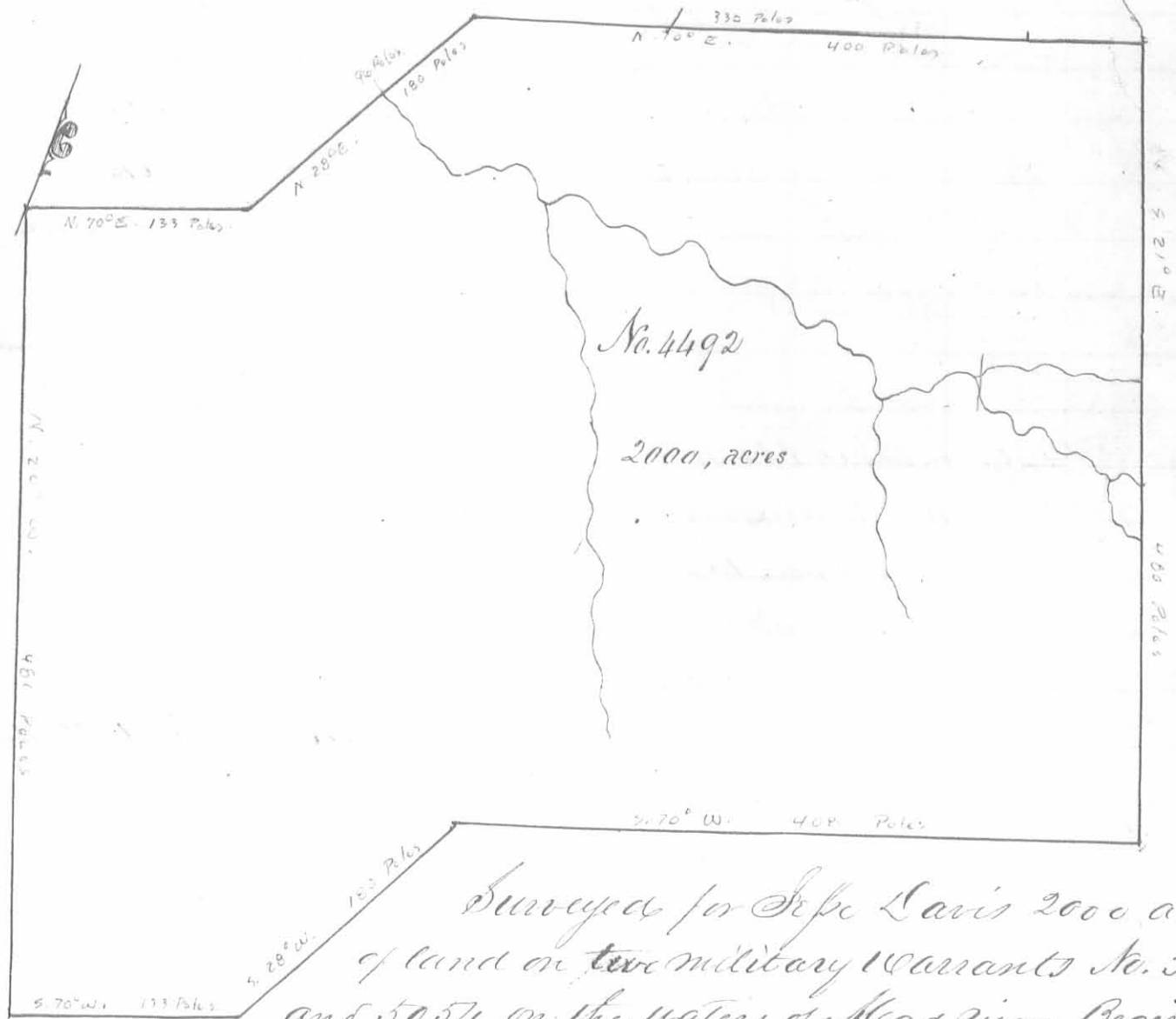
James Thompson $\frac{3}{3}$ C. C. W. Va.

No. 4958

500. acres

James Denny D.S.

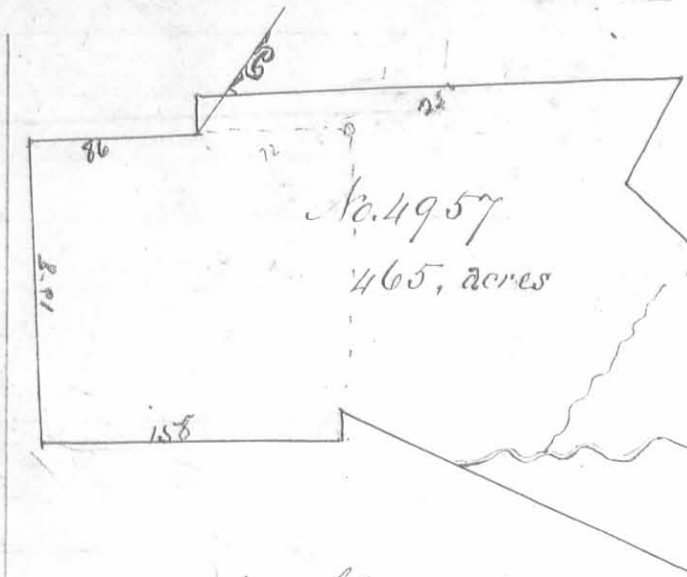
June 20th 1806September 2nd 1806



Surveyed for Sepe Davis 2000 acres
of land on ~~two~~ military warrants No. 5053
and 5054 on the waters of Mead river: Beginning
at two white oaks southwesterly corner to Thomas Northingtons sur-
vey No. 4479 and in the line surveyed by Sudlow, running with
Northingtons line N. 70 E. 133 poles to three hickories; thence
N. 28 E. 150 poles crossing a branch at 96 poles to three burr oaks
thence N. 70. E. 400 poles passing a corner at 330 poles to two
sugar trees and two Ironwoods in the line of Augustin P Smiths
survey No. 3225; thence with his line S. 21. E. 480 poles crossing
several branches to a hickory red oak and ash; thence S. 70
W. 408 poles to two burr oaks; thence S. 28 W. 180 poles to two
hickories; thence S. 70. W. 133 poles to two black oaks in Sud-
lows line; thence with said line N. 20 W. 480 poles to the begin-
ning.

John Parrett
John Thomas Clerk.

James Denny L.S.
May 1st 1805
September 1st 1806



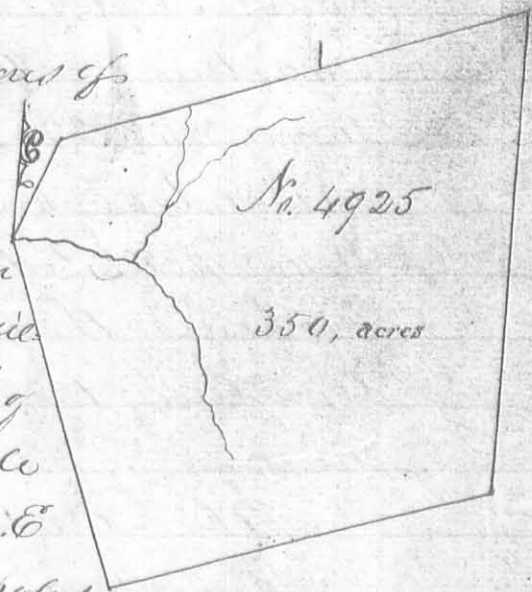
Surveyed for James Denny of ^{the}
 465 acres of land on part of two Military
 Warrants vizt 365 acres on No. 107
 and 100 acres on No 4892 on Mad
 river: Beginning at a sugar
 tree S. 60. W. 72 poles from the
 Northeastly corner of Sam-
 uel McCulloch's survey No

4495 running S. 60. W. 86 poles to two hickories and two red oaks Southwes-
 terly corner to said survey, thence S 30 E 158 poles to a stake on the side
 of a bushy ridge, thence N. 60 E. 158 poles crossing Mad river 160 poles
 to two dogwoods and two elms; thence N. 50. E 150 poles crossing three
 Spring drains to a white oak two dogwoods and a mulberry in the
 line of James Calderwoods survey, N. 31 38; thence with his line N 75 W
 250 poles crossing the river at 80 poles to seven small white oaks from
 one root, southwest corner to said Calderwoods survey; thence with an-
 other of his lines north 60 poles to an elm and burr oak; thence S
 59 W. 252 poles to a black oak; thence S 30. E. 110 poles to the beginning.

George McCulloch
 Solomon McCulloch 3 Cts. & M. & R.

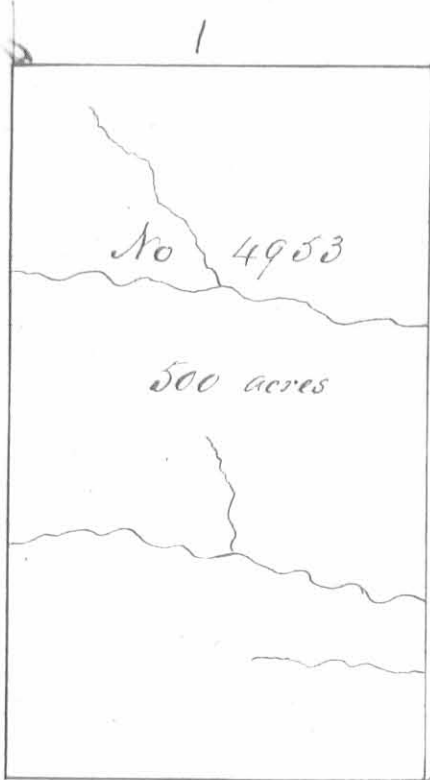
James Denny, D. S.
 August 30th 1806
 September 2nd 1806

Surveyed for James Denny of ^{the} 350 acres of
 land on part of a military warrant No. 107
 on the waters of Mad river, beginning at a
 stake in the line surveyed by Suddow between
 the United States lands and the Virginia Mil-
 itary district where it crosses a branch of
 Kings Creek between the 25 and 26 mile
 tree marked on said line running N. 20. E
 160 poles to a stake; thence N. 70 E 250 poles
 crossing a branch at 163 poles to a white oak and hickory; thence
 South 250 poles to a stake in the edge of a barrow, thence S 70 W
 202 poles to a black oak and two hickories in Suddow's line; thence
 with said line N. 25 W. 192 poles to the beginning.



John Barnett
 James Thomas 3 Cts. & M. & R.

James Denny, D. S.
 August. 30th 1806
 September 2nd 1806



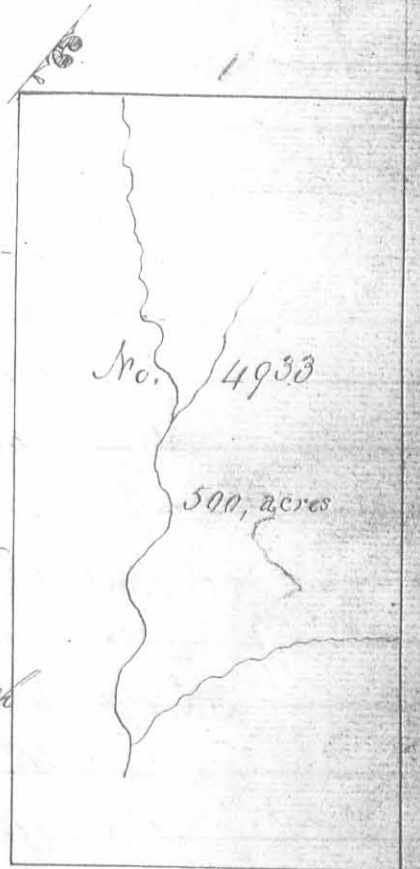
Surveyed for Duncan McArthur 500 acres of land on part of a military warrant No 5072 on the waters of Darby's Creek: Beginning at two sugar trees and a beech southerly corner to Robert Powers survey No. 3680; thence S. 52. N. 217 poles to two beeches, a sugar tree and white oak in the edge of a pond; thence N. 38 N. 370 poles crossing two branches, to two beeches a sugar tree and hickory; thence N. 52 E. 217 poles to a white walnut buckeye and sugar tree in the line of said Powers survey; thence with said line S. 38. E. 370 poles crossing several branches to

the beginning.

Joseph Sharp 3
John Sharp 3 106
John McDonald m.k.r.

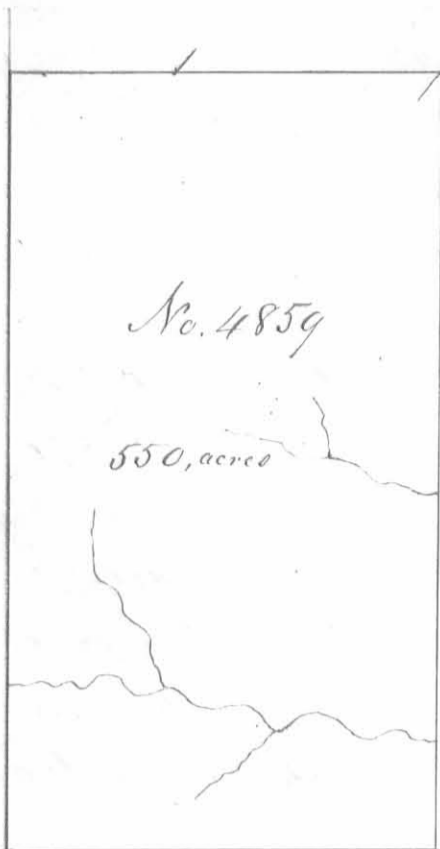
Duncan McArthur D.S.
May 1st 1806
May 6th 1806

Surveyed for Thomas Sears 500 acres of land on part of a Military Warrant No 2418 on the waters of Darby's Creek; Beginning at two sugar trees and an elm easterly corner to George McCreais survey No. 3155 and southerly corner to said Sears survey No 545, thence with the line of the last mentioned survey N. 52 E 200 poles crossing a branch to two beeches and a sugar tree, easterly corner to said Sears survey; thence S. 38 E. 400 poles crossing a branch at 280 poles to two sugar trees and a beech thence S. 52. N. 200 poles crossing a large branch to a beech; thence N. 38. N. 400 poles to the beginning.



Job Sharp 3
John Sharp 3 106
John McDonald m.k.r.

Duncan McArthur D.S.
May 1st 1806
May 6th 1806

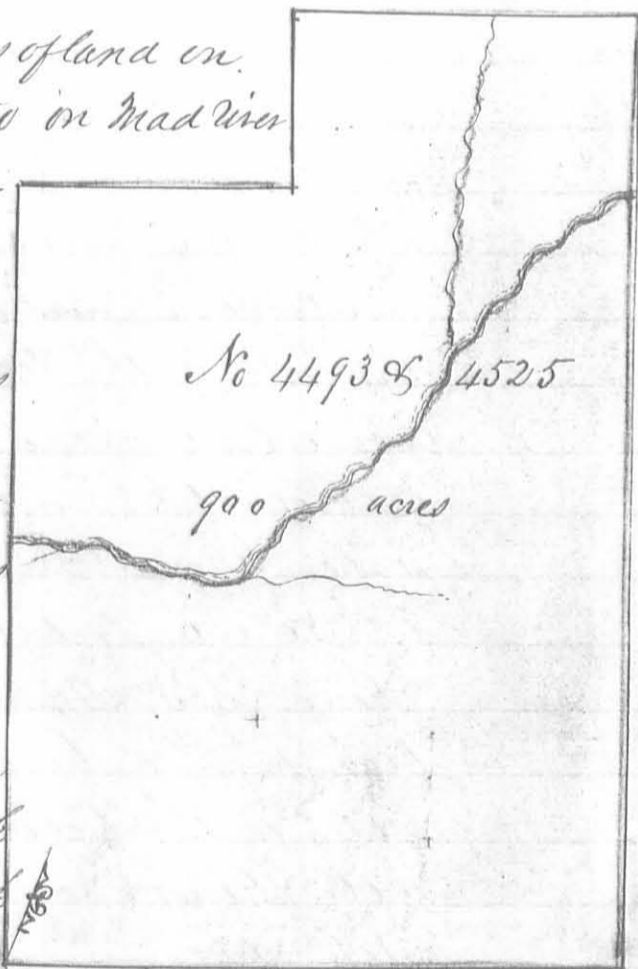


Surveyed for Levi Hollingsworth of 550 acres of land on two Military warrants No 1122, 1489 and 50 acres part of 1880 on the waters of Sadsop creek: Beginning at two beeches westerly corner to Clayton Yanceys survey No. 3688, 180 poles S. 52. N. from the southerly corner of Robert Poulos survey No. 3680, running with his line S. 30. E. 400 poles crossing several branches to two beeches and a sugar tree corner to said Yanceys survey thence S. 52 N. 220 poles to two sugar trees and a red oak easterly corner to Peter Pelhams survey No. 4697, thence with his line N. 88 W. 400 poles crossing a branch at 86 poles to a sugar tree and beech northerly corner to said Pelhams survey, thence N. 52. E. 220 poles to the beginning.

David Sroufe 3
David Blue 3 & 6
Ephraim Byers, M.k.r.

James Galloway Junr D.S.
March 26th 1807
April 24th 1807

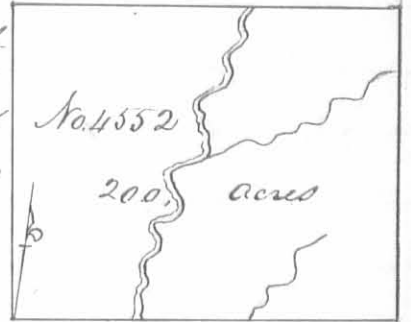
Surveyed for Samuel Finley 900 acres of land on part of a Military Warrant No. 1450 on Mad river Beginning at two black oaks in Sudlows line, N 20. W 199 poles from a white marked 30 mile on said line Northwest corner to Thomas Worthingtons survey No 4479 running N 70 E. 320 poles to a black oak, thence N. 20 W 490 poles crossing Mad river at 393 poles to a stake in a prairie; thence S. 70. W. 178 poles crossing a branch at 70 poles to two hickories and a white oak, thence S. 20. E 90 poles to a white oak and black oak; thence S. 70. W. 142 poles to a black oak in Sudlows line, thence with said line S. 20. E 400 poles crossing the river at 184 poles to the beginning.



Solomon McCulloch 3
George McCulloch 3 & 6 M.k.r.

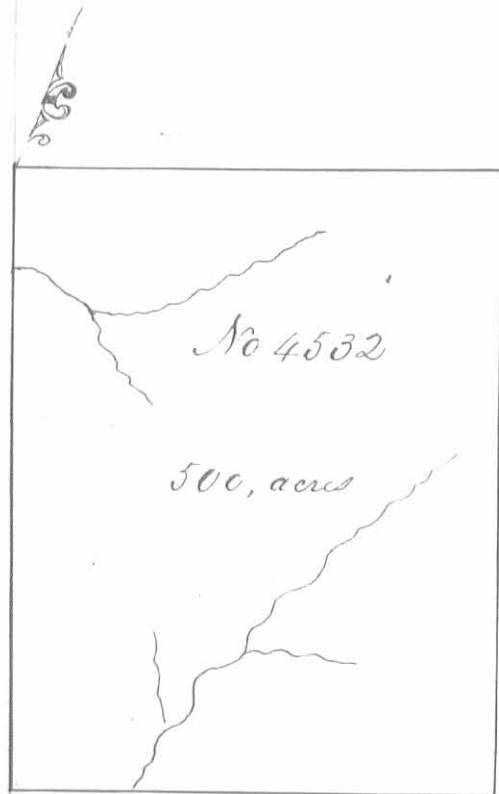
James Denny D.S.
May 1st 1805
September 2nd 1806

Surveyed for John Cole 200 acres of land part of a Military Warrant No. 5041 on the East fork of the Little Miami: Beginning at a black gum dogwood and cherry tree and white oak Northwest corner to Thomas Perkins survey No 4256 running with his line and course thereof N. 85. E 200 poles crossing the fork at 67 and a branch at 126 poles, passing Perkins corner at 160 poles to two sugar trees, a cherry tree and red oak, thence N. 5. W 160 poles crossing a small branch at 131 poles to two sugar trees, two small white oaks a dogwood and ash, thence S 85. W 200 poles crossing the fork at 72 poles to three hickories and a beech, thence S. 5. E. 160 poles to the beginning.



John Poke
Richard Baldeck } C. C. M. K.

James Gallaway Junr D. S.
October 10th 1804
January 9th 1805



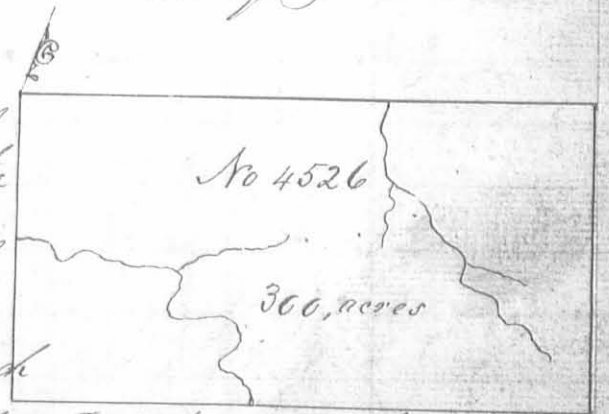
Surveyed for John Cole 500 acres of land on part of a Military Warrant No 5041 on the waters of Mad River: Beginning at a white oak ash and elm, in the line run by Sudaon from the head of the Little Miami towards the head of the Scioto, 40 poles N. 20. W from the eight mile tree running N 70 E 250 poles to two elms a white oak and hickory thence S 20 E 320 poles to two elms and an ash thence S. 70. W. 250 poles crossing a branch to an ash, elm and hickory in Sudaons line;

thence with said line N 20 W. 320 poles crossing a branch to the beginning.

John Stevenson }
Moses Collier } C. C. M. K.

James Gallaway Junr D. S.
December 6th 1804
January 9th 1805

Surveyed for James Meers within 300 acres of land on part of a military Warrant No 1382 on the waters of Mad river: Beginning at two hickories northeast corner to Robert Means survey No 4414 running N 70 E 300 poles crossing a branch at 190 poles to a walnut and two elms, thence S 20 E 160 poles to two hickories thence S 70 W. 300 poles crossing a branch at 180 poles to a white oak and black oak southeast corner to Robert Means survey, thence with his line N. 20. W. 160 poles crossing a branch to the beginning.



John Stevenson }
Moses Collier } C. C.
Joseph Coffey M. K.

James Gallaway Junr D. S.
January 5th 1805. January 10th 1805

No 4507

180 acres

Surveyed for Thomas Browder Apr^r 110 acres of land on part of a Military warrant No. 5045 on the waters of Kings Creek a branch of Mad. river. Beginning at three Cherry trees, two from our root and two Elms Northeast corner to an entry made for Gabriel Peterson No 4159 running with the line of said entry S 69 W 160 poles to six live oaks, four from our root; thence S. 21. W 110 poles to a stake in a prairie in the line of an entry made for said Peterson No 4494, thence with the line of said entry N. 69. E. 160 poles through the Indian Corn field crossing a branch at 140 poles to a white oak, red oak and elm in said line, thence S. 21. E 110 poles to the beginning

John Stevenson

Moses Collier 3 10.6

Richard Balcock M.k.r.

James Galloway Jun^r D.S.December 1st 1804January 9th 1805

Surveyed for Samuel McColloch Apr^r 160 acres of land on part of a Military warrant No 5052 on Mad River.

Beginning at two sugar trees and two buckeyes running S. 30. E. 160 poles to a stake in a prairie near the bank of Mad river, thence S to W. 160 poles to a stake on the side of a brushy ridge; thence N 30 W 160 poles to two hickories and two red oaks, thence N. 60. E 160 poles to the beginning.

James Dougherty

George McColloch 3 66

Samuel McColloch, M.k.r.

James Drury D.S.

June 18th 1804October 18th 1804

No 4520

675 acres

Surveyed for Richard Osburn Apr^r 675 acres of land on the following Military Warrants viz^t. No 997, 1181, 2941, 3228, 2974 and 75 acres on part of Warrant No 3997 on the waters of Mad river; beginning at a small white oak southwesterly corner to Gabriel Petersons entry No 4494 running thence with his line N. 21. W. 460 poles, passing his Northwesterly corner at 250 poles which is supposed to be Southwesterly corner to Augustine Smiths survey No. 3229 to two red elms and three hickories; thence S. 70. W. 235 poles passing the Southwesterly corner of Jesse Davis entry No 4492 at 60 poles to two white oaks, and a hickory in Davis's line; thence S. 20 E. 460 poles crossing a branch at 120 poles to a stake in a prairie, thence N. 70 E 244 poles to the beginning.

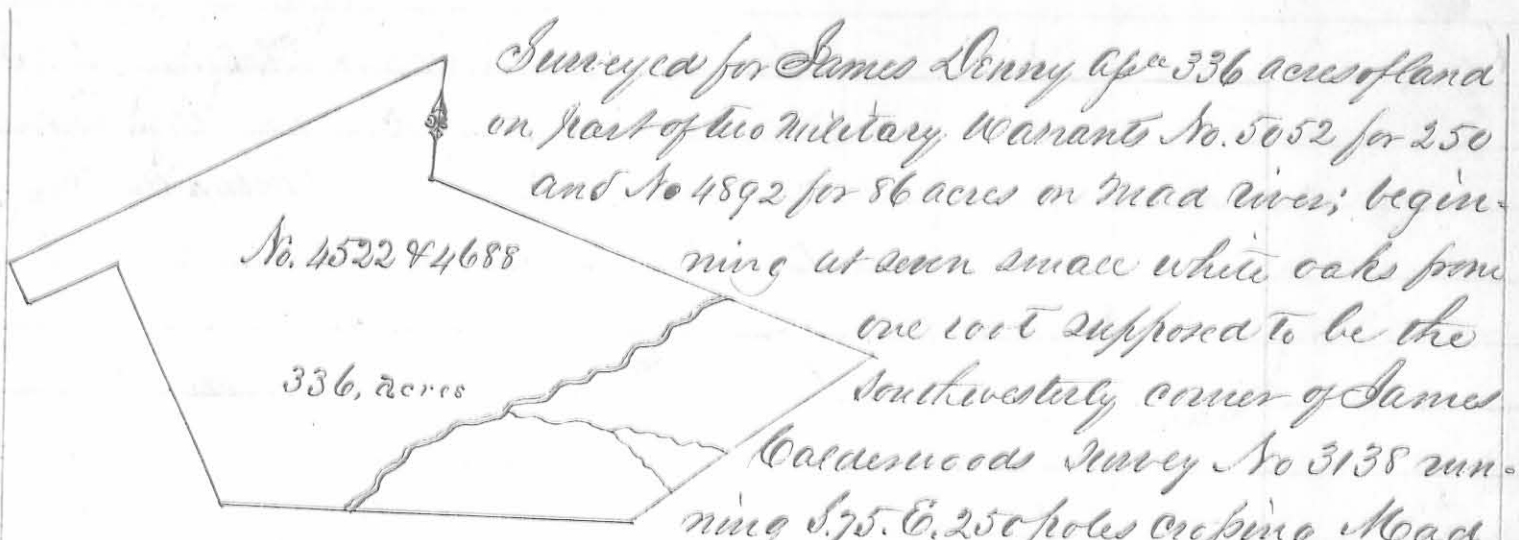
Isaac Sollen

Stephen Souers 3 66

William Rector M.k.r.

John Osburn D.S.

August 20th 1804September 18th 1804

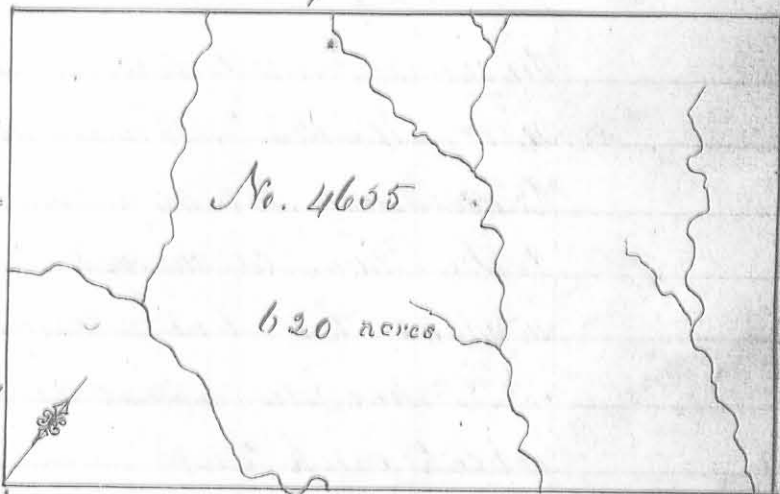


Surveyed for James Denny 336 acres of land on part of two military warrants No. 5052 for 250 and No 4892 for 86 acres on Moad river; beginning at seven small white oaks from one root supposed to be the southwesterly corner of James Calderwoods survey No 3138 running S. 75. E. 250 poles crossing Moad river at 166 poles to a white oak, two dogwoods and a Mulberry thence S. 50. W. 160 poles, crossing a drain at 100 and one at 134 poles to two dogwoods an elm and hickory, thence S. 87 W. 210 poles crossing the river at 138 poles to a stake in the line of Samuel McCullochs survey No. 4495, thence with his line N. 30 W. 134 poles to two sugar trees and two buckeyes Northeastly corner to said McCullochs survey, thence S. 60. W. 40 poles with another of his lines to a stake; thence N. 30 W. 20 poles to a stake; thence N. 58. E. 246 poles to three elms and a burr oak; thence south 60 poles to the beginning.

Solomon McCulloch
George McCulloch 3/66
Samuel McCulloch m.k.r.

James Denny D.S.
June 27th 1805
January 6th 1806

Surveyed for the Representative of Seucelling Jones 620 acres of land on part of a Military warrant No. 5063 on the waters of Beaver run a branch of Darby creek; Beginning at two beeches Westly corner to Philip Claytons survey No. 3164, running N. 38. W. 248 poles crossing a branch at 114 poles to two poplars and a hickory; thence N. 52. E. 400 poles crossing a branch at 100 one at 164, one at 240 and one at 258 poles to a sugar tree ash and Ironwood; thence S. 38. E. 248 poles to three beeches easterly corner to said Claytons survey; thence with his line S. 52 W. 400 poles crossing three branches to the beginning.



William Gibson
Henry Starns 3/66
John Baird m.k.v.

James Gallaway Junr D.S.
May 6th 1805
May 9th 1805