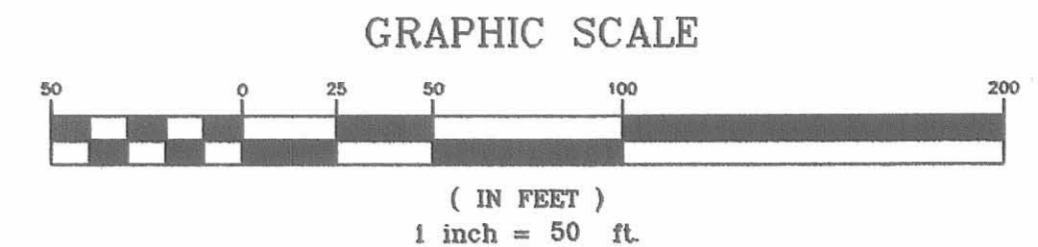
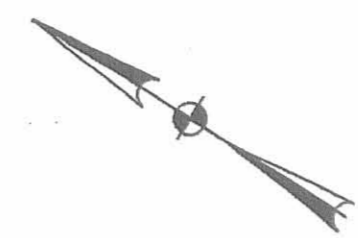


LOGAN COUNTY ZANE TOWNSHIP V.M.S. 545, 3155, 3160 AND 4933

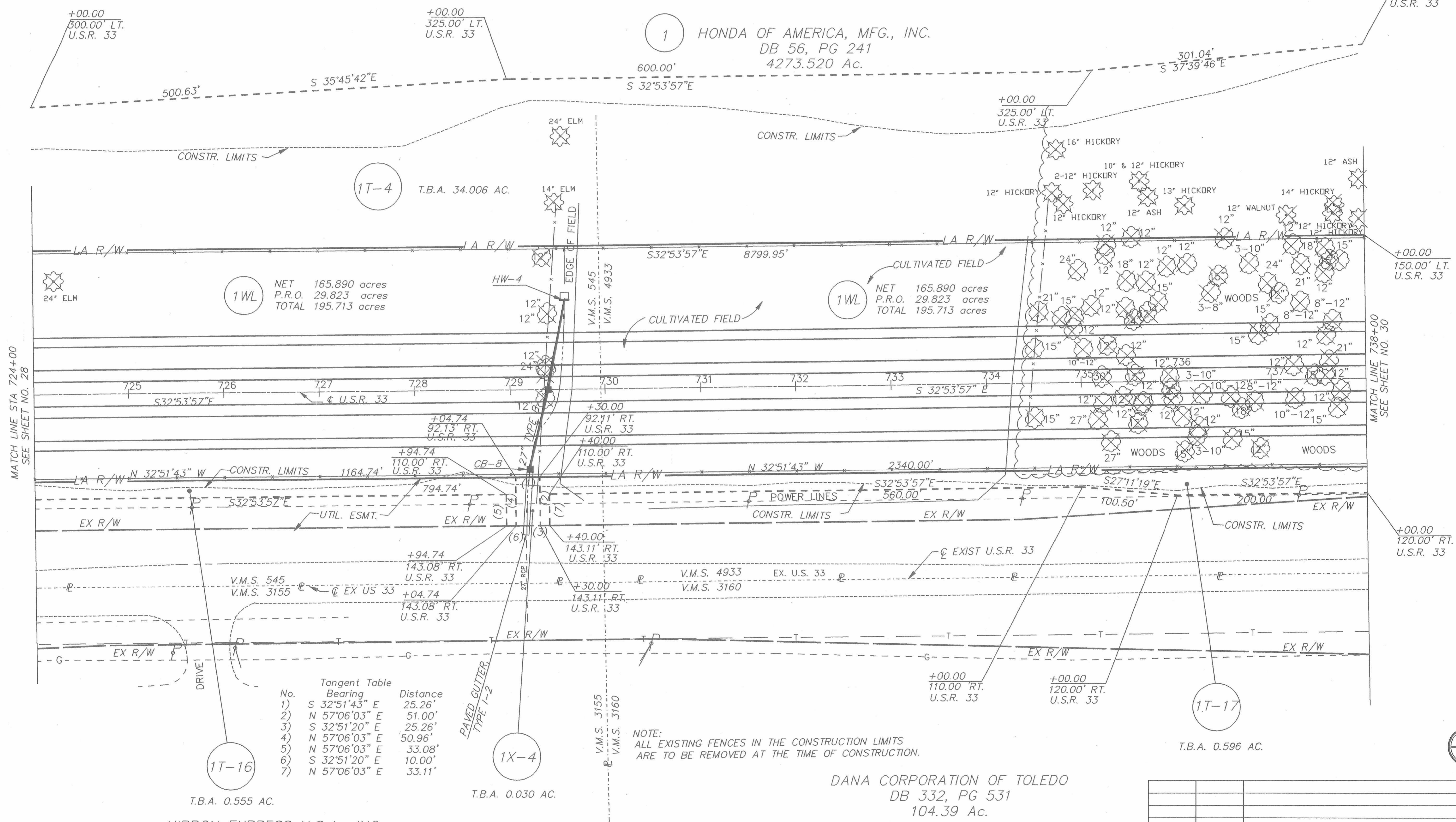


F.H.W.A. REGION	STATE	PROJECT
5	OHIO	NH-11(115)

568
585

LOGAN & UNION COUNTIES
LOG/UNI-33-25.50/0.00
STATE JOB NO. 07560(0)
P.I.D. NO. 4551

29
44



1WL NET 165.890 acres
P.R.O. 29.823 acres
TOTAL 195.713 acres

1WL NET 165.890 acres
P.R.O. 29.823 acres
TOTAL 195.713 acres

Tangent Table

No.	Bearing	Distance
1)	S 32°51'43" E	25.26'
2)	N 57°06'03" E	51.00'
3)	S 32°51'20" E	25.26'
4)	N 57°06'03" E	50.96'
5)	N 57°06'03" E	33.08'
6)	S 32°51'20" E	10.00'
7)	N 57°06'03" E	33.11'

NOTE:
ALL EXISTING FENCES IN THE CONSTRUCTION LIMITS
ARE TO BE REMOVED AT THE TIME OF CONSTRUCTION.

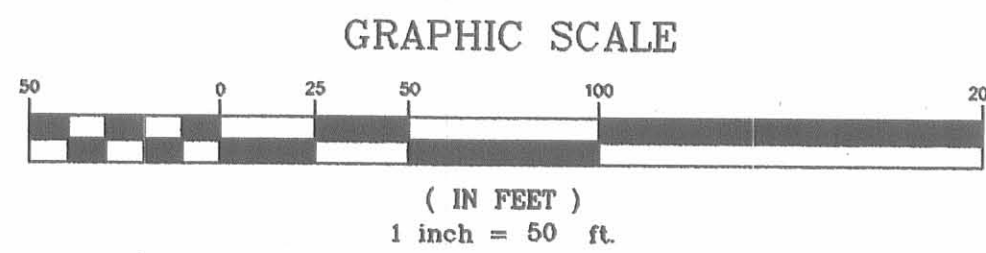
DANA CORPORATION OF TOLEDO
DB 332, PG 531
104.39 Ac.

- ▲ Railroad Spike (set)
- ⊕ 5/8" Iron Pin with ODOT cap (set)

NIPPON EXPRESS U.S.A., INC.
OR 86-29
82.458 Ac.

REV.	DATE	DESCRIPTION
COMPLETION DATE:		

57021/ROW/013
1"=50' 33.5/22.0 0.0
STA. 02/01/95 DML

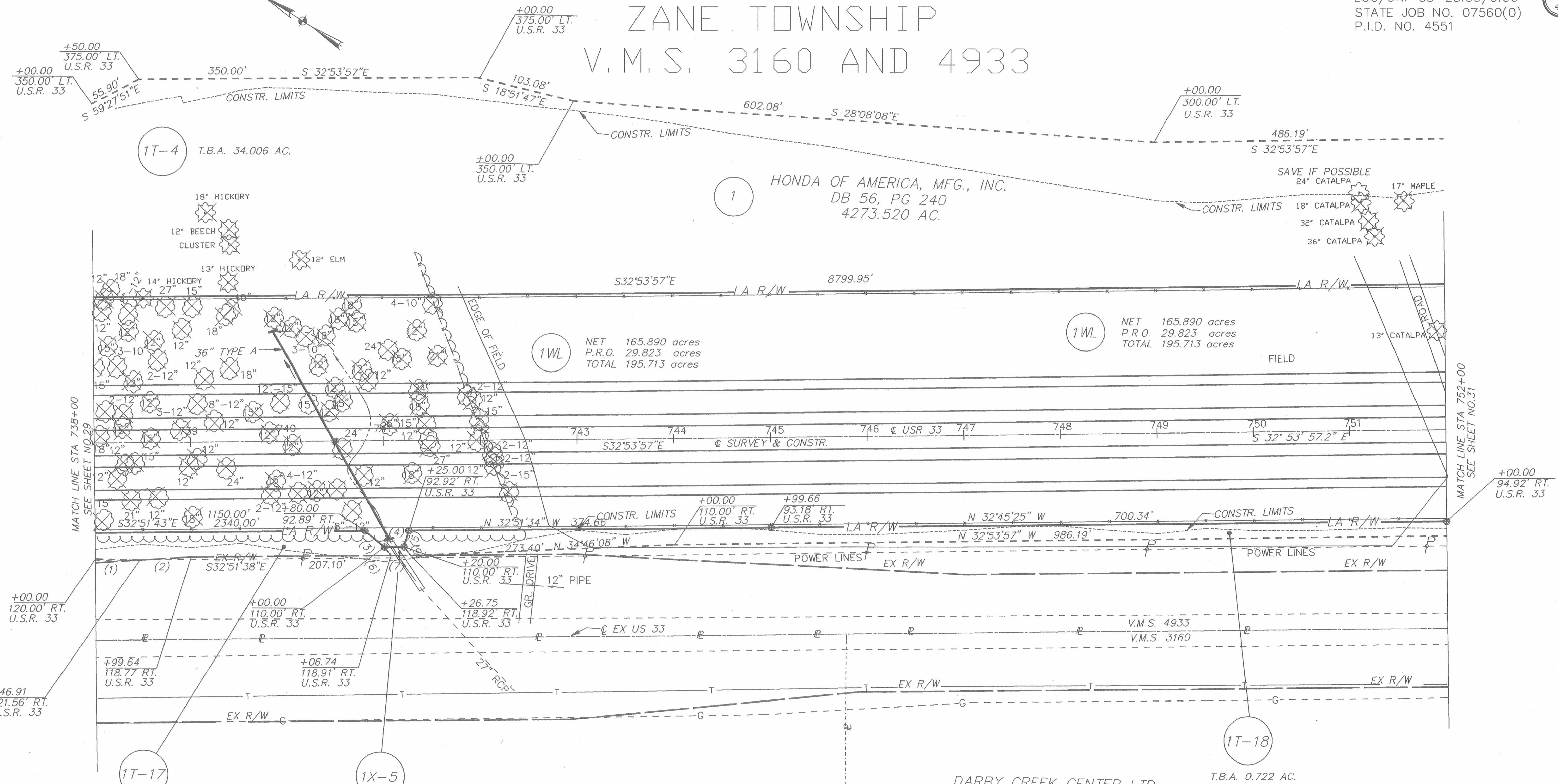


LOGAN COUNTY ZANE TOWNSHIP V.M.S. 3160 AND 4933

F.H.W.A. REGION	STATE	PROJECT	
5	OHIO	NH-11(115)	

LOGAN & UNION COUNTIES
LOG/UNI-33-25.50/0.00
STATE JOB NO. 07560(O)
P.I.D. NO. 4551

569
585
30
42



Tangent Table

No.	Bearing	Distance
1)	S 30°59'40" E	46.94'
2)	S 35°55'41" E	52.80'
3)	N 07°38'52" E	26.32'
4)	N 32°53'57" W	20.00'
5)	S 73°25'04" W	17.80'
6)	N 19°59'42" E	11.17'
7)	N 32°52'14" W	20.01'
8)	S 19°59'06" W	11.19'

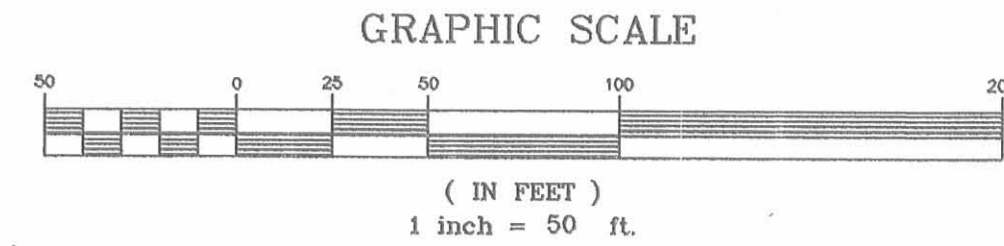
▲ Railroad Spike (set)
● 5/8" Iron Pin with ODOT cap (set)

REV.	DATE	DESCRIPTION

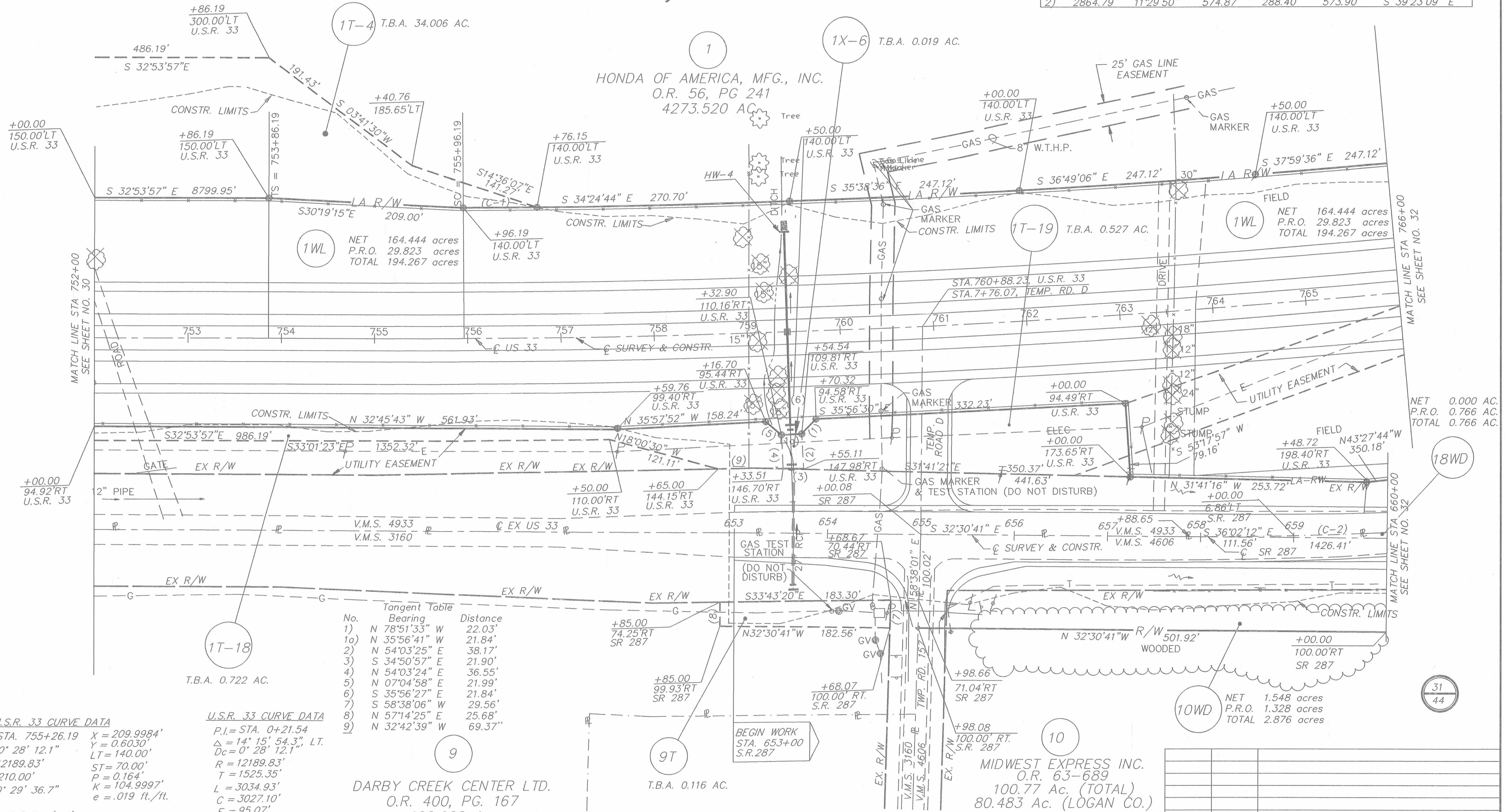
COMPLETION DATE: _____

57001 FROM ROW-014
1450 33-25.50
STA. SRVY 02/01/95 DML

LOGAN COUNTY ZANE TOWNSHIP V.M.S. 3160, 4606 AND 4933



NO.	RADIUS	DELTA	ARC	TANGENT	CHORD	BEARING
1)	12049.83'	00°22'33"	79.04'	39.52'	79.04'	N 33°34'50" W
2)	2864.79'	11°29'50"	574.87'	288.40'	573.90'	S 39°23'09" E



No.	Bearing	Distance
1)	N 78°51'33" W	22.03'
1a)	N 35°56'41" W	21.84'
2)	N 54°03'25" E	38.17'
3)	S 34°50'57" E	21.90'
4)	N 54°03'24" E	36.55'
5)	N 07°04'58" E	21.99'
6)	S 35°56'27" E	21.84'
7)	S 58°38'06" W	29.56'
8)	N 57°14'25" E	25.68'
9)	N 32°42'39" W	69.37'

U.S.R. 33 CURVE DATA
 PIs = STA. 755+26.19 X = 209.9984'
 Dc = 0° 28' 12.1" Y = 0.6030'
 R = 12189.83' LT = 140.00'
 Ls = 210.00' ST = 70.00'
 P = 0.164' T = 1525.35'
 e = 104.9997' K = .019 ft./ft.
 e = .019 ft./ft.

U.S.R. 33 CURVE DATA
 P.I. = STA. 0+21.54
 Δ = 14° 15' 54.3" LT.
 Dc = 0° 28' 12.1" R = 12189.83'
 R = 12189.83' T = 1525.35'
 L = 3034.93' C = 3027.10'
 E = 95.07' CB = S 40°-31'-31" E
 e = 0.019 ft./ft.

DARBY CREEK CENTER LTD.
 O.R. 400, PG. 167
 122.026 Ac.

RONALD P. YOUNKIN, ETAL.
 T.B.A. 0.116 AC.

MIDWEST EXPRESS INC.
 O.R. 63-689
 100.77 Ac. (TOTAL)
 80.483 Ac. (LOGAN CO.)

ALS	DATE	REVISION	DESCRIPTION
	12/06/95	REVISED BEARING No. 1a)	

COMPLETION DATE:

LOGAN AND UNION COUNTY ZANE AND ALLEN TOWNSHIP V.M.S. 3160,4606 AND 4933

F.H.W.A. REGION	STATE	PROJECT	571
5	OHIO	NH-11(115)	585

LOGAN & UNION COUNTIES
LOG/UNI-33-25.50/0.00
STATE JOB NO. 07560(0)
P.I.D. NO. 4551

Tangent Table		
No.	Bearing	Distance
1)	S 57°29'19" W	28.15'

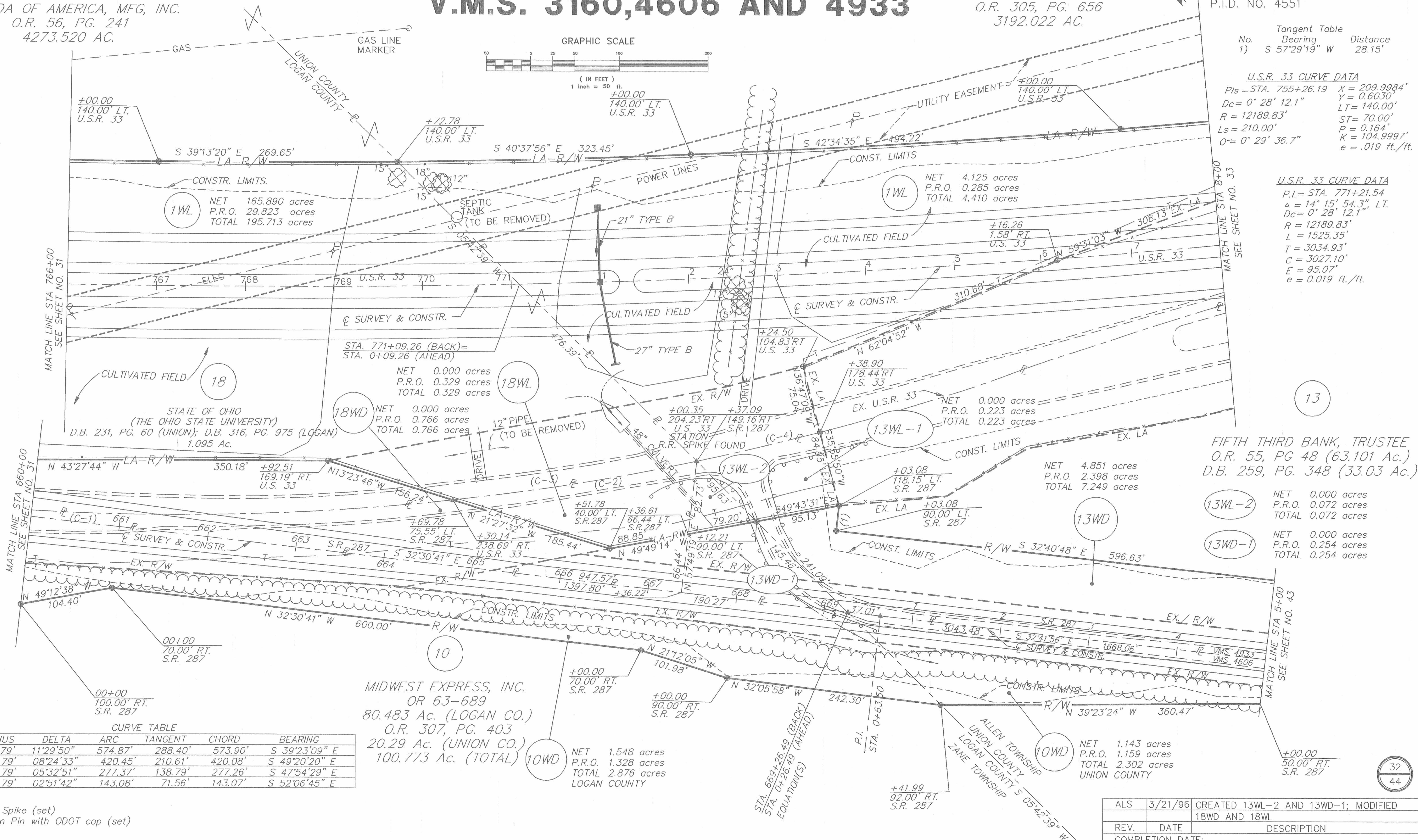
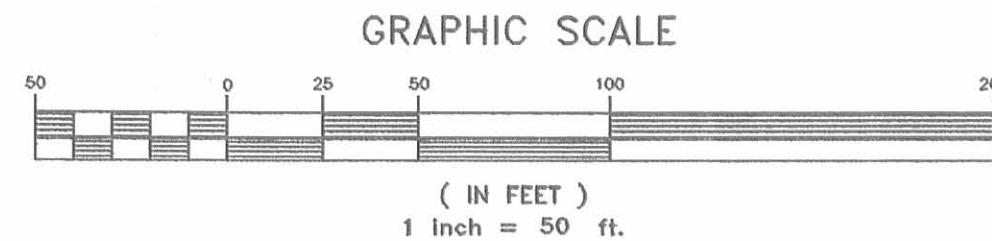
U.S.R. 33 CURVE DATA
 PIs = STA. 755+26.19 X = 209.9984'
 Y = 0.6030'
 Dc = 0° 28' 12.1" LT = 140.00'
 R = 12189.83' ST = 70.00'
 Ls = 210.00' P = 0.164'
 O = 0° 29' 36.7" K = 104.9997'
 e = .019 ft./ft.

U.S.R. 33 CURVE DATA
 P.I. = STA. 771+21.54
 Δ = 14° 15' 54.3" LT.
 Dc = 0° 28' 12.1" L = 1525.35'
 R = 12189.83' T = 3034.93'
 C = 3027.10'
 E = 95.07'
 e = 0.019 ft./ft.

NOTE:
ALL EXISTING FENCES WITHIN CONSTRUCTION LIMITS
ARE TO BE REMOVED AT THE TIME OF CONSTRUCTION.

HONDA OF AMERICA, MFG, INC.
O.R. 56, PG. 241
4273.520 AC.

HONDA OF AMERICA, MFG, INC.
O.R. 305, PG. 656
3192.022 AC.



1WL
 NET 165.890 acres
 P.R.O. 29.823 acres
 TOTAL 195.713 acres

18WD
 NET 0.000 acres
 P.R.O. 0.766 acres
 TOTAL 0.766 acres

1WL
 NET 4.125 acres
 P.R.O. 0.285 acres
 TOTAL 4.410 acres

13WL-1
 NET 0.000 acres
 P.R.O. 0.223 acres
 TOTAL 0.223 acres

13WD
 NET 4.851 acres
 P.R.O. 2.398 acres
 TOTAL 7.249 acres

13WL-2
 NET 0.000 acres
 P.R.O. 0.072 acres
 TOTAL 0.072 acres

13WD-1
 NET 0.000 acres
 P.R.O. 0.254 acres
 TOTAL 0.254 acres

MIDWEST EXPRESS, INC.
OR 63-689
80.483 Ac. (LOGAN CO.)
O.R. 307, PG. 403
20.29 Ac. (UNION CO.)
100.773 Ac. (TOTAL)

10WD
 NET 1.548 acres
 P.R.O. 1.328 acres
 TOTAL 2.876 acres
 LOGAN COUNTY

10WD
 NET 1.143 acres
 P.R.O. 1.159 acres
 TOTAL 2.302 acres
 UNION COUNTY

NO.	RADIUS	DELTA	ARC	TANGENT	CHORD	BEARING
1)	2864.79'	11°29'50"	574.87'	288.40'	573.90'	S 39°23'09" E
2)	2864.79'	08°24'33"	420.45'	210.61'	420.08'	S 49°20'20" E
3)	2864.79'	05°32'51"	277.37'	138.79'	277.26'	S 47°54'29" E
4)	2864.79'	02°51'42"	143.08'	71.56'	143.07'	S 52°06'45" E

▲ Railroad Spike (set)
 ⊙ 5/8" Iron Pin with ODOT cap (set)

ALS	3/21/96	CREATED 13WL-2 AND 13WD-1; MODIFIED 18WD AND 18WL
REV.	DATE	DESCRIPTION
COMPLETION DATE:		

UNION COUNTY ALLEN TOWNSHIP V.M.S. 4933

F.H.W.A. REGION	STATE	PROJECT
5	OHIO	NH-11(115)

572
585

LOGAN & UNION COUNTIES
LOG/UNI-33-25.50/0.00
STATE JOB NO. 07560(0)
P.I.D. NO. 4551

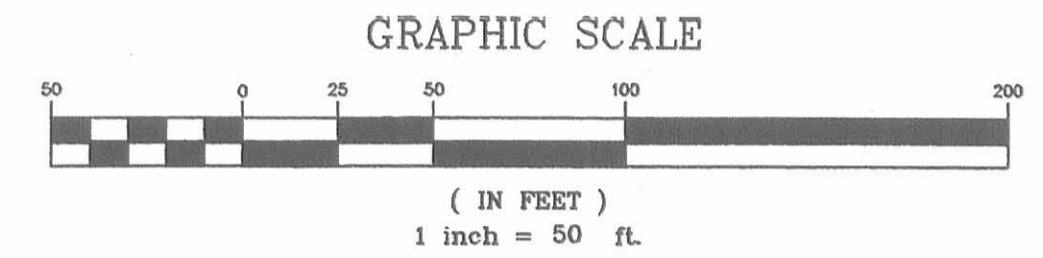
33
44

1

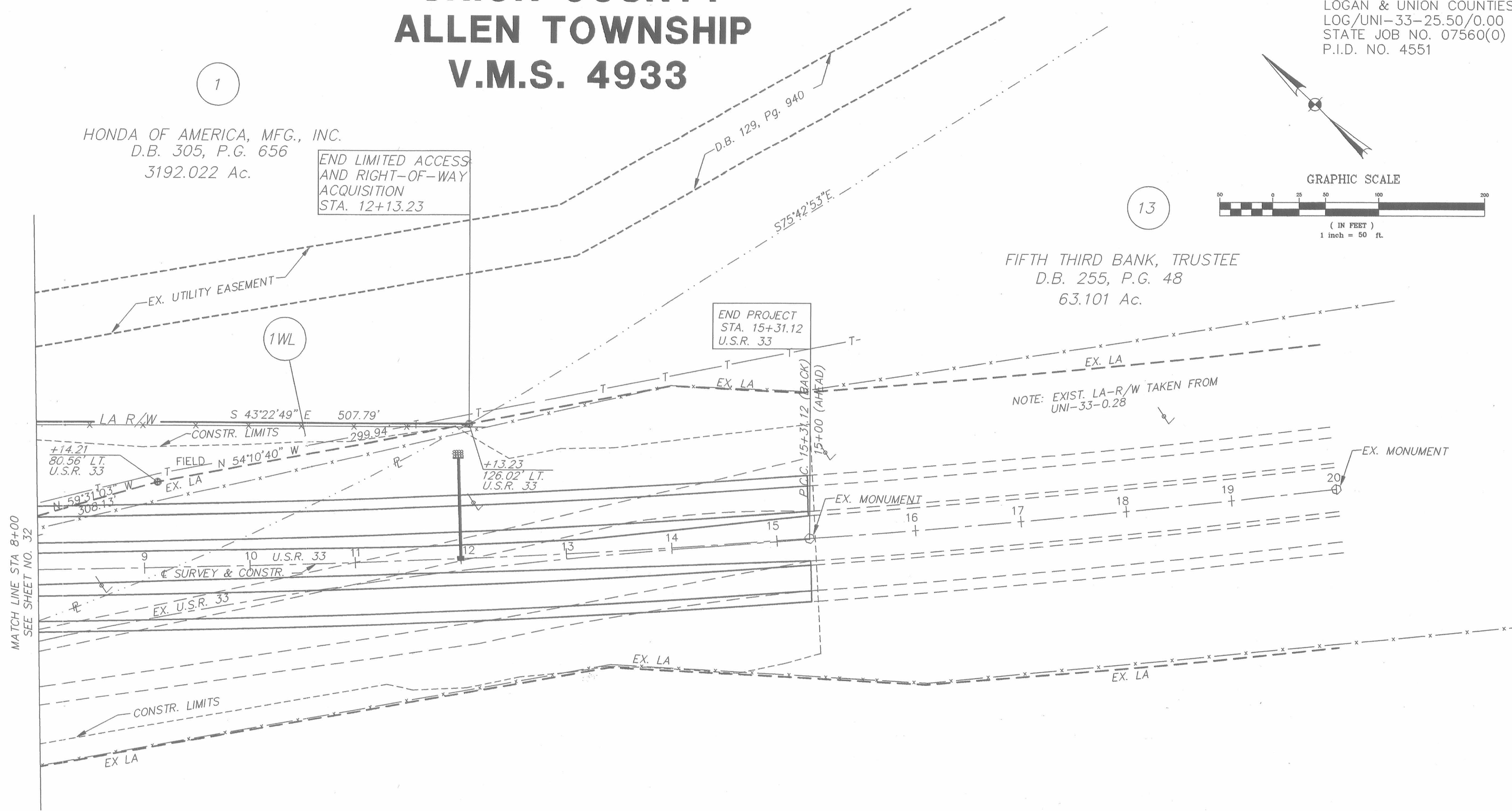
HONDA OF AMERICA, MFG., INC.
D.B. 305, P.G. 656
3192.022 Ac.

END LIMITED ACCESS
AND RIGHT-OF-WAY
ACQUISITION
STA. 12+13.23

13



FIFTH THIRD BANK, TRUSTEE
D.B. 255, P.G. 48
63.101 Ac.



MATCH LINE STA. 8+00
SEE SHEET NO. 32

NOTE: EXIST. LA-R/W TAKEN FROM
UNI-33-0.28

▲ Railroad Spike (set)
⊕ 5/8" Iron Pin with ODOT cap (set)

33
44

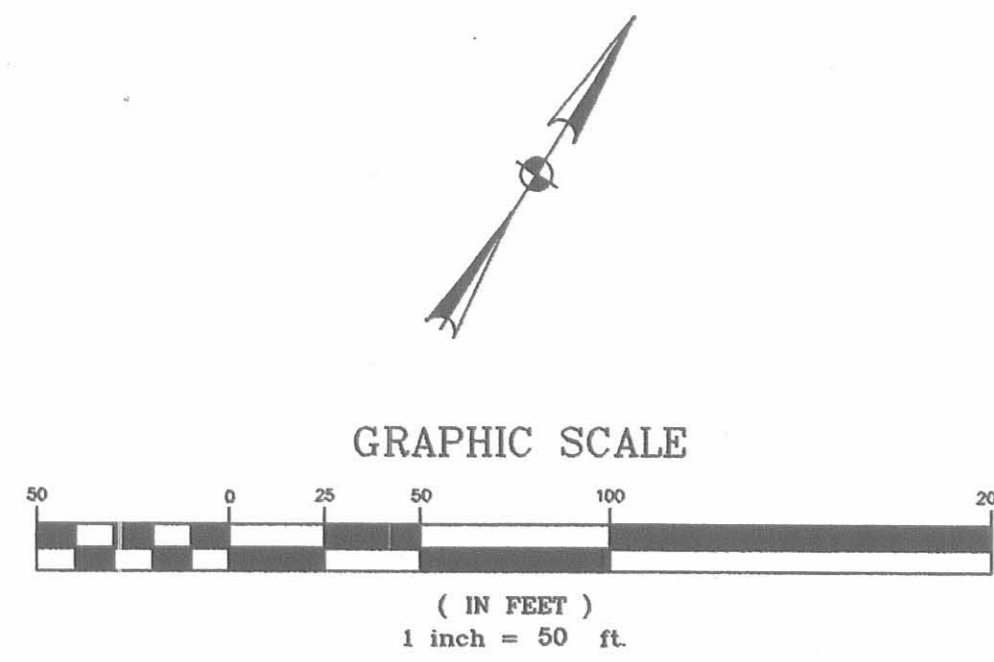
REV.	DATE	DESCRIPTION

LOGAN COUNTY PERRY TOWNSHIP V.M.S. 3164 AND 4689

F.H.W.A. REGION	STATE	PROJECT
5	OHIO	NH-11(115)

LOGAN & UNION COUNTIES
LOG/UNI-33-25.50/0.00
STATE JOB NO. 07560(0)
P.I.D. NO. 4551

573
585
34
44



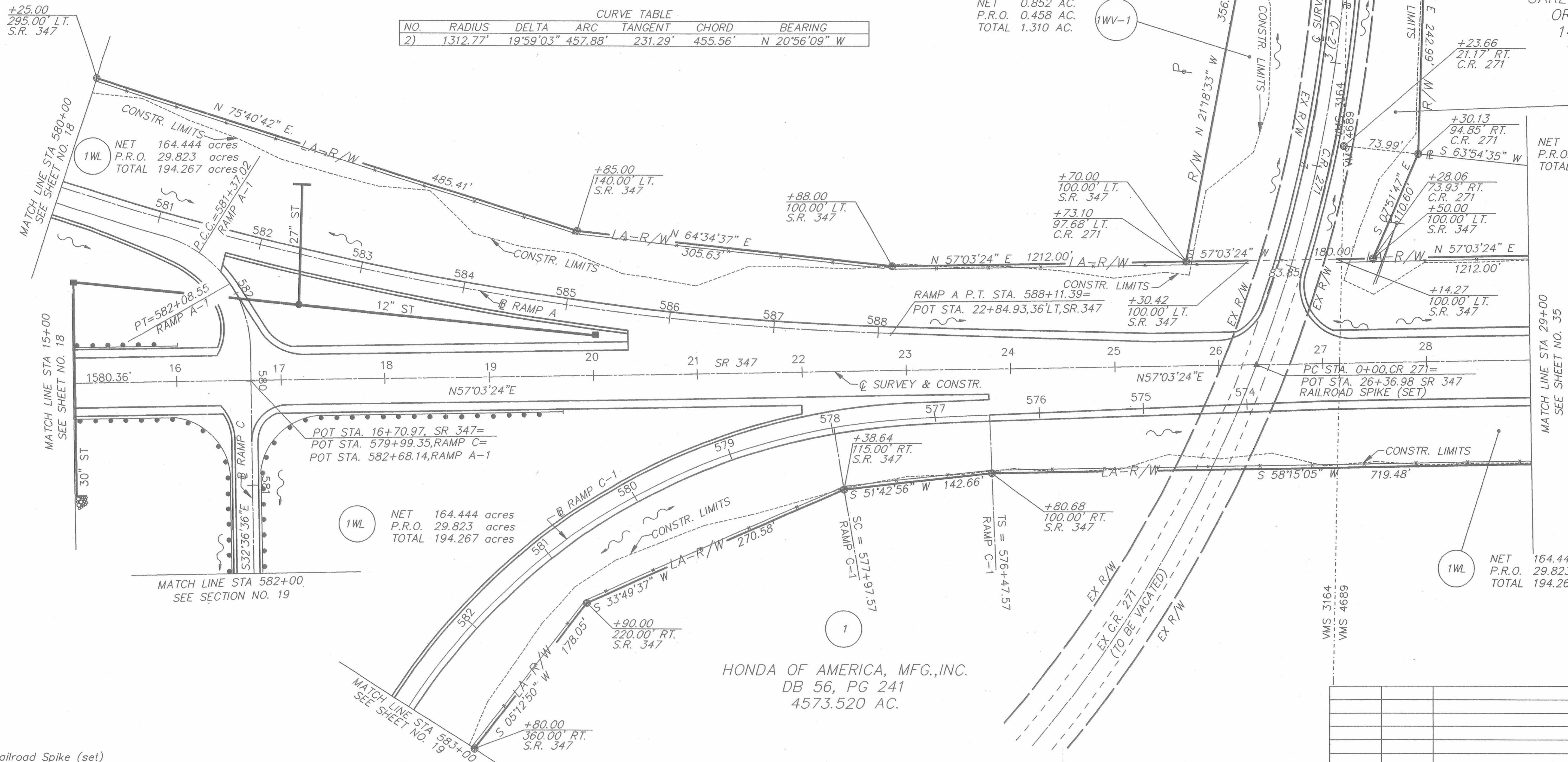
NO.	RADIUS	DELTA	ARC	TANGENT	CHORD	BEARING
2)	1312.77'	19°59'03"	457.88'	231.29'	455.56'	N 20°56'09" W

NET 0.852 AC.
P.R.O. 0.458 AC.
TOTAL 1.310 AC.

CARL BURKHOLDER
OR 139-323
14.973 AC.

NET 0.358 AC.
P.R.O. 0.223 AC.
TOTAL 0.581 AC.

HONDA OF AMERICA, MFG., INC.
DB 56, PG 241
4573.520 AC.



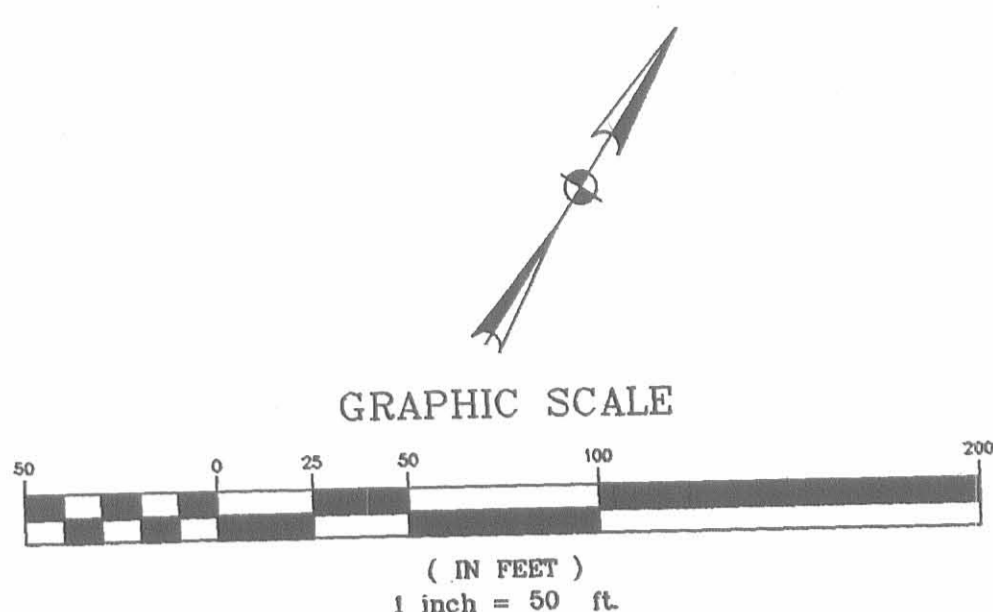
REV.	DATE	DESCRIPTION

COMPLETION DATE: _____

RIGHT-OF-WAY S.R. 347 STA.15+00 TO 29+00

▲ Railroad Spike (set)
⊕ 5/8" Iron Pin with ODOT cap (set)

LOGAN COUNTY PERRY TOWNSHIP V.M.S. 4689



T.B.A. 0.056 acres

1

CARL BURKHOLDER
OR 139-323
14.973 Ac.

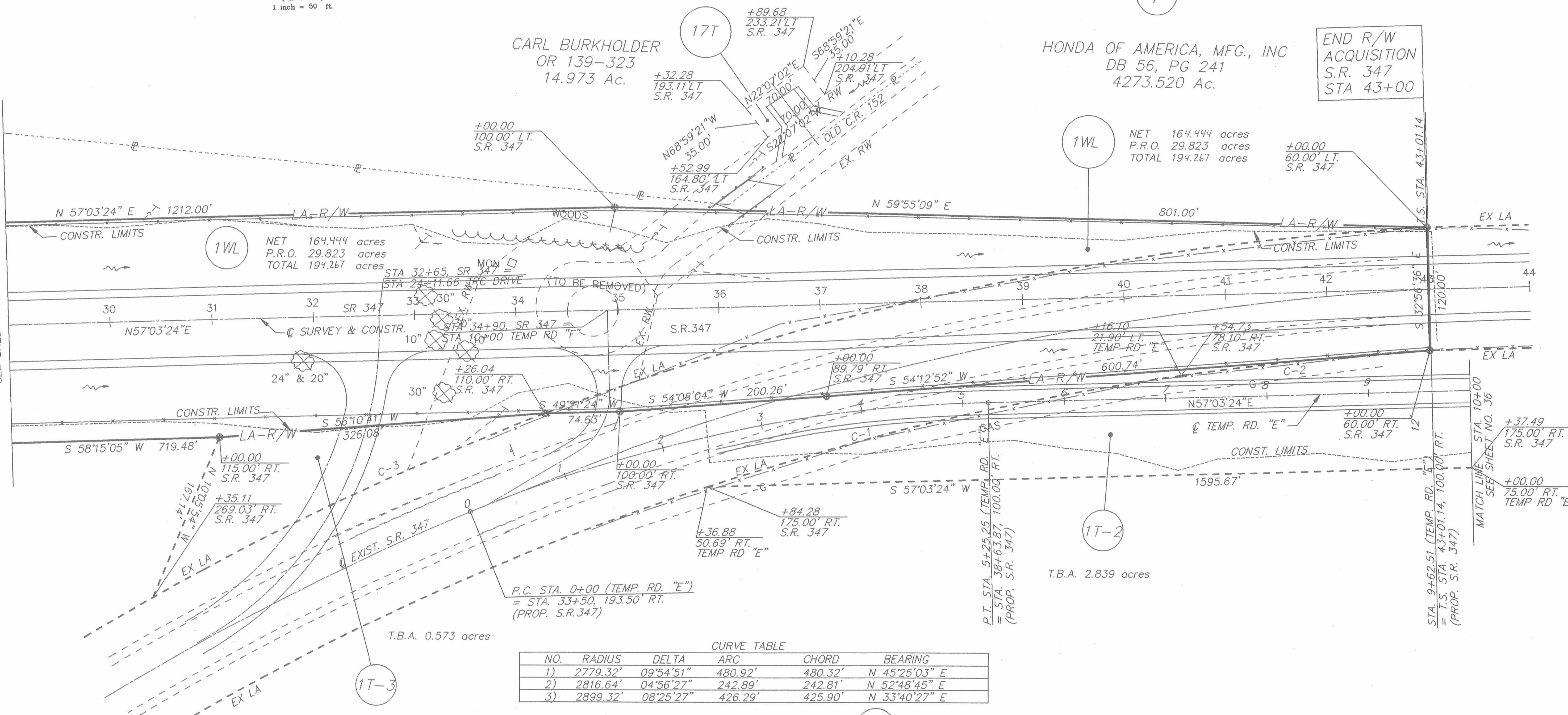
HONDA OF AMERICA, MFG., INC
DB 56, PG 241
4273.520 Ac.

END R/W
ACQUISITION
S.R. 347
STA 43+00

1WL
NET 164.444 acres
P.R.O. 29.823 acres
TOTAL 194.267 acres

+00.00
60.00' LT.
S.R. 347

MATCH LINE STA 29+00
SEE SHEET NO. 34



CURVE TABLE

NO.	RADIUS	DELTA	ARC	CHORD	BEARING
1)	2779.32'	09°54'51"	480.92'	480.32'	N 45°25'03" E
2)	2816.64'	04°56'27"	242.89'	242.81'	N 52°48'45" E
3)	2899.32'	08°25'27"	426.29'	425.90'	N 33°40'27" E

TRC DRIVE	TEMP. ROAD "F"	TEMP. ROAD "E"
P.I. STA. 22+36.85	P.I. STA. 8+88.00	P.I. STA. 2+65.61
Δ = 62°43'24" LT	Δ = 61°00'00"	Δ = 21°00'35"
Dc = 16°30'00"	Dc = 106°15'37"	Dc = 4°00'00"
R = 347.25	R = 62.50	R = 1432.40'
L = 380.14	L = 66.54'	L = 525.25'
Lc = 361.44'	Lc = 63.44'	Lc = 522.31'
T = 211.64'	T = 36.82'	T = 265.61'
E = 59.41	E = 10.04'	E = 24.42'
e = 0.04 FT/FT	e = NC	e = NC

HONDA OF AMERICA, MFG., INC
DB 56, PG 241
4273.520 Ac.

1

REV.	DATE	DESCRIPTION

▲ Railroad Spike (set)
⊕ 5/8" Iron Pin with ODOT cap (set)

57051/ROW/RW-019
1450 333.22.0 0.0
STA.SRVY 02/07/95 DML

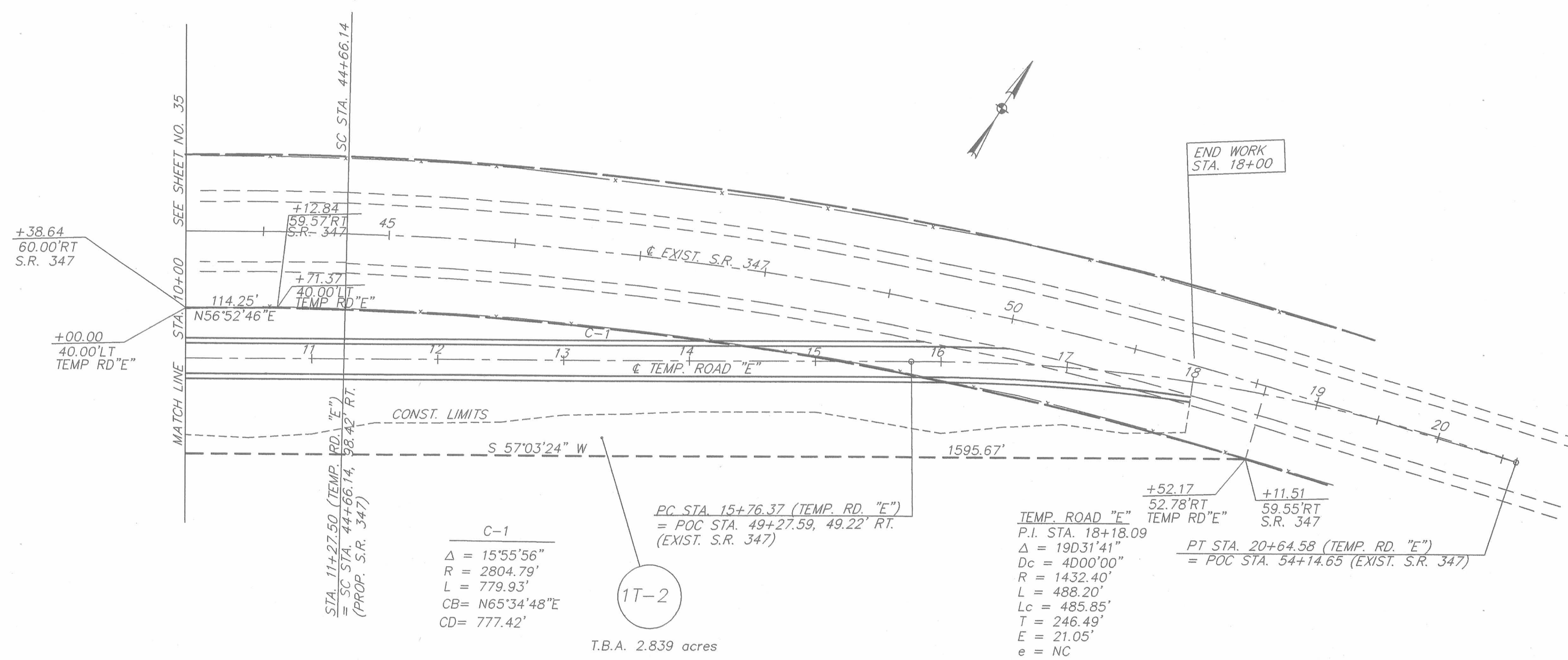
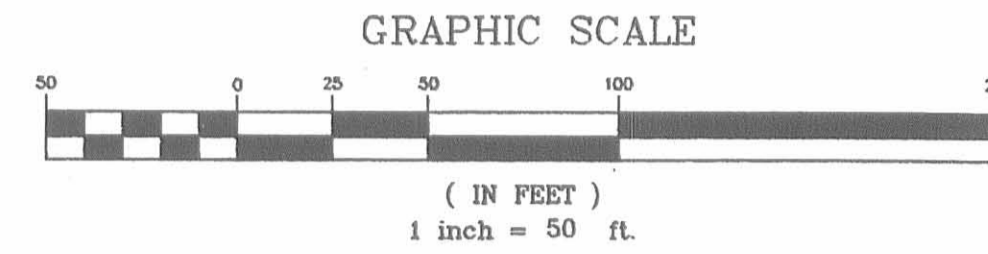
LOGAN COUNTY PERRY TOWNSHIP V.M.S. 4689

F.H.W.A. REGION	PROJECT
5 OHIO	NH-11(115)

575
585

LOGAN & UNION COUNTIES
LOG/UNI-33-25.50/0.00
STATE JOB NO. 07560(0)
P.I.D. NO. 4551

36
44



C-1
 $\Delta = 15^{\circ}55'56''$
 $R = 2804.79'$
 $L = 779.93'$
 $CB = N65^{\circ}34'48''E$
 $CD = 777.42'$

17-2
T.B.A. 2.839 acres

**TEMP ROAD "E"
CURVE DATA**
 P.I. STA = 18+18.09
 $\Delta = 19^{\circ}31'41''$
 $D_c = 4^{\circ}00'00''$
 $R = 1432.40'$
 $L = 488.20'$
 $L_c = 485.85'$
 $T = 246.49'$
 $E = 21.05'$
 $e = NC$

1
 HONDA OF AMERICA, MFG., INC.
 DB 56, PG 241
 4273.520 Ac.

TEMP. ROAD "E"
 P.I. STA. 18+18.09
 $\Delta = 19^{\circ}31'41''$
 $D_c = 4^{\circ}00'00''$
 $R = 1432.40'$
 $L = 488.20'$
 $L_c = 485.85'$
 $T = 246.49'$
 $E = 21.05'$
 $e = NC$

REV.	DATE	DESCRIPTION

ACAD\STREETS\ROW\ROW-027
 14-50 33.5.22.0 5.0
 STA. SRVY 02/07/95 D.C.

LOGAN COUNTY PERRY TOWNSHIP V.M.S. 3164

F.H.W.A. REGION	STATE	PROJECT
5	OHIO	NH-11(115)

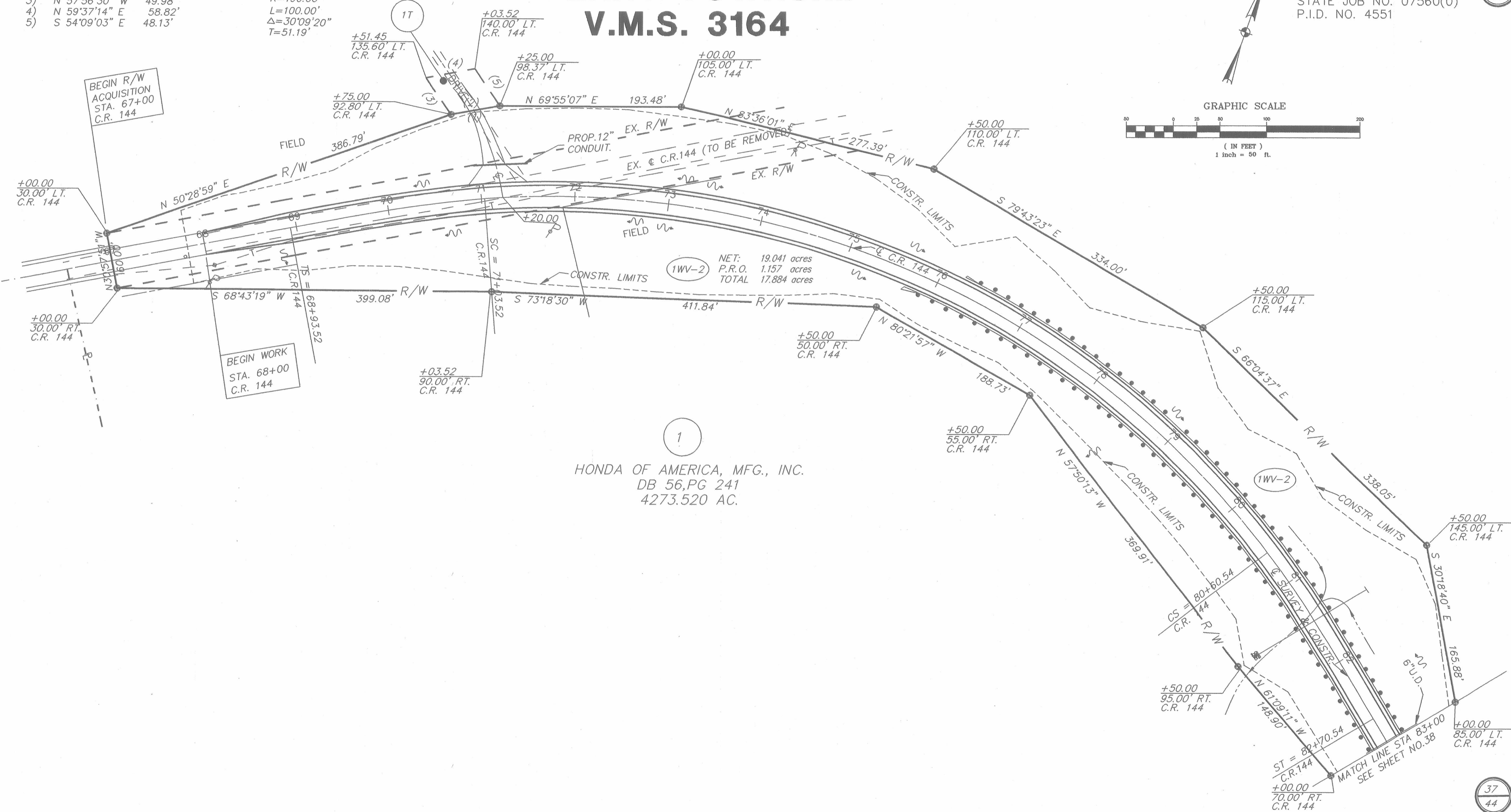
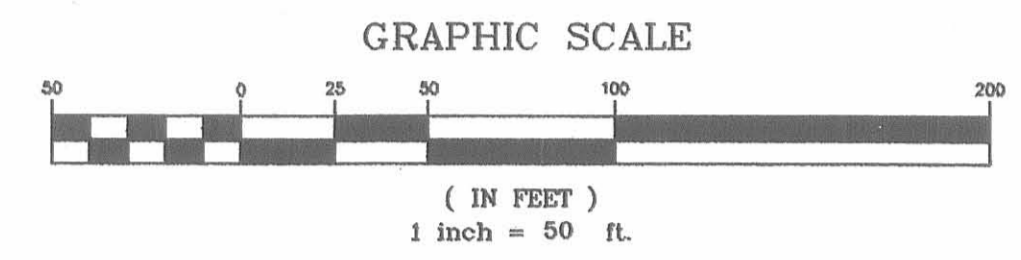
576
585
37
44

LOGAN & UNION COUNTIES
LOG/UNI-33-25.50/0.00
STATE JOB NO. 07560(0)
P.I.D. NO. 4551

Tangent Table

No.	Bearing	Distance
1)	N 59°20'54" E	55.09'
2)	S 59°20'54" W	55.09'
3)	N 57°56'30" W	49.98'
4)	N 59°37'14" E	58.82'
5)	S 54°09'03" E	48.13'

DRIVE CURVE DATA T.B.A. 0.058 AC.
 R=190.00'
 L=100.00'
 Δ=30°09'20"
 T=51.19'



NET: 19.041 acres
 P.R.O. 1.157 acres
 TOTAL 17.884 acres

1
 HONDA OF AMERICA, MFG., INC.
 DB 56, PG 241
 4273.520 AC.

▲ Railroad Spike (set)
 ⊕ 5/8" Iron Pin with ODOT cap (set)

REV.	DATE	DESCRIPTION

DATE OF COMPLETION: _____

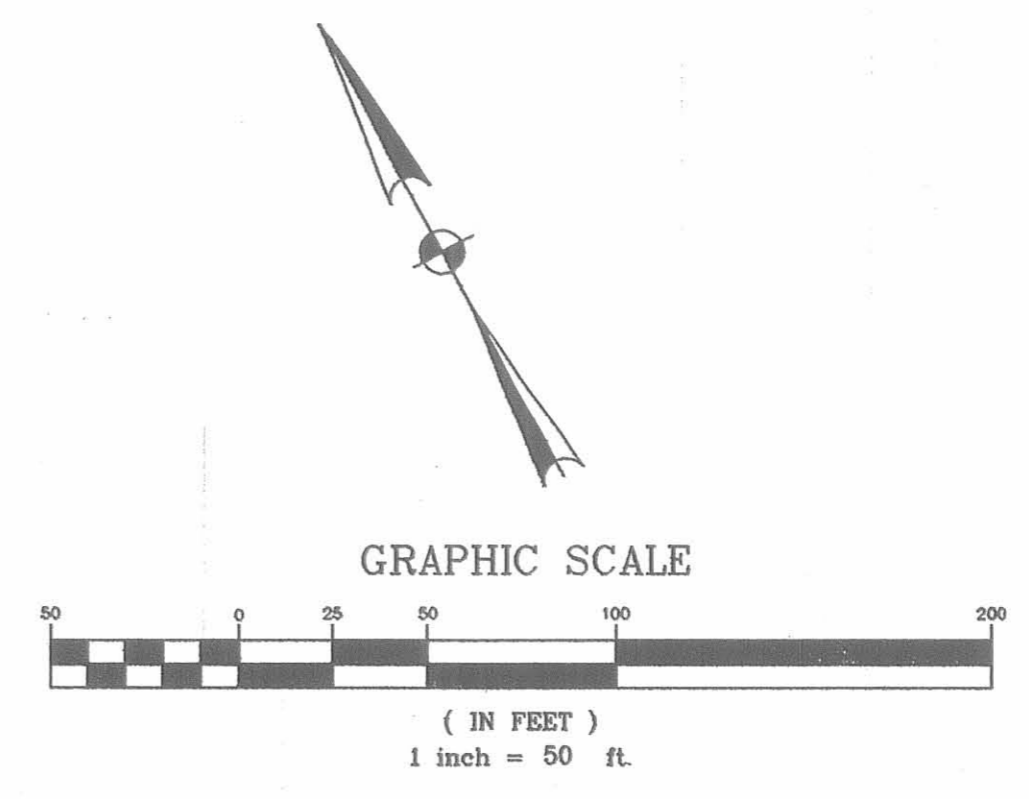
570E\WORK\1000-023
 11/01 3:52:27 0.0
 STA. SRVY 01/31/95 DML

LOGAN COUNTY PERRY TOWNSHIP V.M.S. 3164

F.H.W.A. REGION	STATE	PROJECT
5	OHIO	NH-11(115)

577
585
38
44

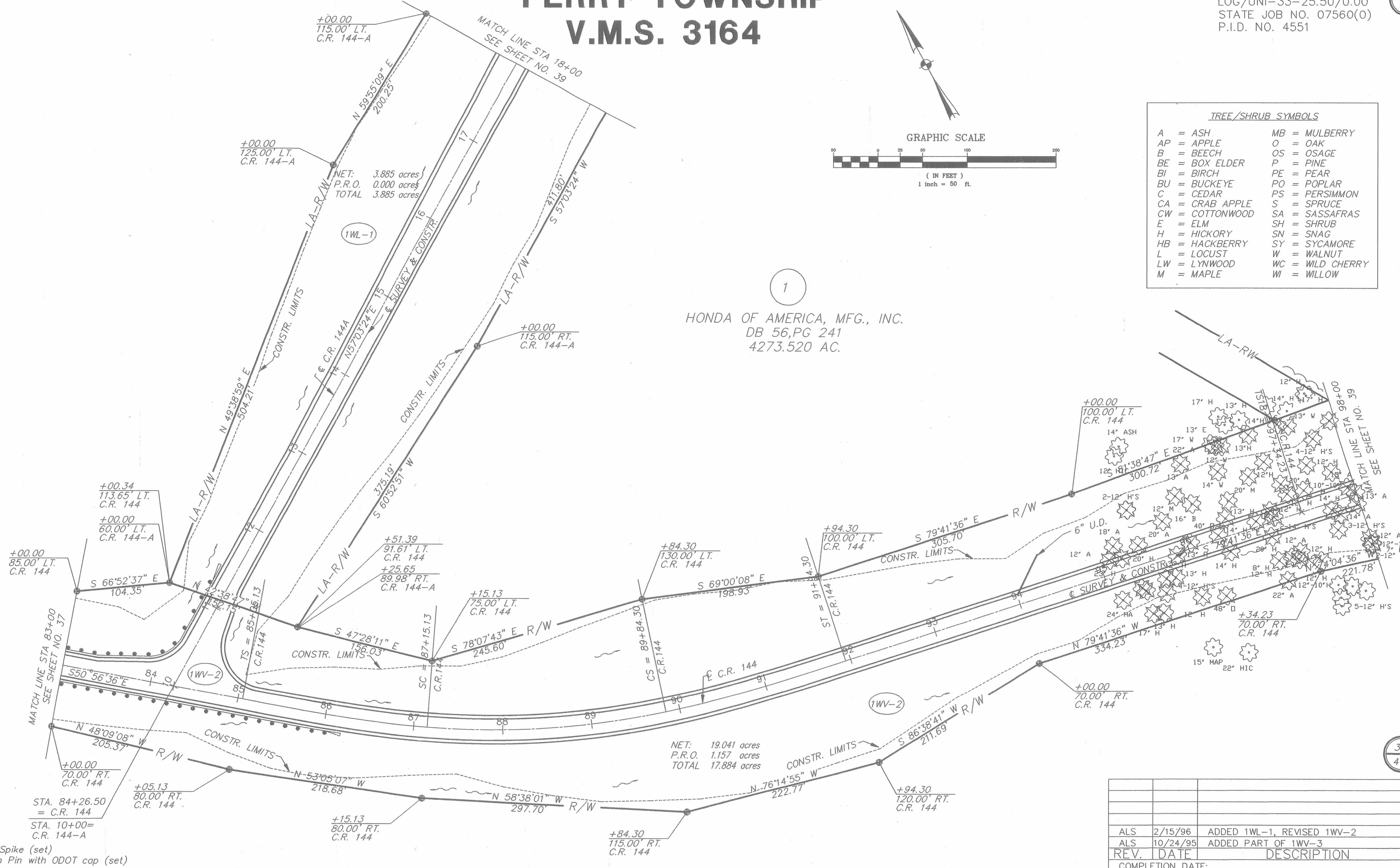
LOGAN & UNION COUNTIES
LOG/UNI-33-25.50/0.00
STATE JOB NO. 07560(0)
P.I.D. NO. 4551



TREE/SHRUB SYMBOLS

A = ASH	MB = MULBERRY
AP = APPLE	O = OAK
B = BEECH	OS = OSAGE
BE = BOX ELDER	P = PINE
BI = BIRCH	PE = PEAR
BU = BUCKEYE	PO = POPLAR
C = CEDAR	PS = PERSIMMON
CA = CRAB APPLE	S = SPRUCE
CW = COTTONWOOD	SA = SASSAFRAS
E = ELM	SH = SHRUB
H = HICKORY	SN = SNAG
HB = HACKBERRY	SY = SYCAMORE
L = LOCUST	W = WALNUT
LW = LYNWOOD	WC = WILD CHERRY
M = MAPLE	WI = WILLOW

1
HONDA OF AMERICA, MFG., INC.
DB 56, PG 241
4273.520 AC.



NET: 3.885 acres
P.R.O. 0.000 acres
TOTAL 3.885 acres

NET: 19.041 acres
P.R.O. 1.157 acres
TOTAL 17.884 acres

REV.	DATE	DESCRIPTION
ALS	2/15/96	ADDED 1WL-1, REVISED 1WV-2
ALS	10/24/95	ADDED PART OF 1WV-3
REV.	DATE	DESCRIPTION
COMPLETION DATE:		

RIGHT-OF-WAY PLAN C.R. 144 STA. 83+00 TO STA.98+00 & C.R. 144A STA. 10+00 TO STA. 18+00

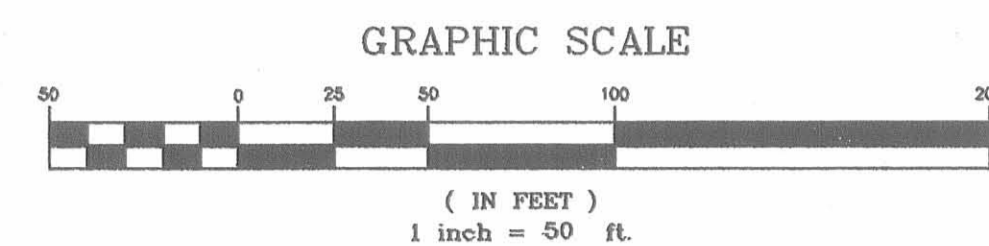
▲ Railroad Spike (set)
⊕ 5/8" Iron Pin with ODOT cap (set)

F.H.W.A. REGION	STATE	PROJECT
5	OHIO	NH-11(115)

LOGAN & UNION COUNTIES
 LOG/UNI-33-25.50/0.00
 STATE JOB NO. 07560(0)
 P.I.D. NO. 4551

578
585
39
44

LOGAN COUNTY PERRY TOWNSHIP V.M.S. 3164



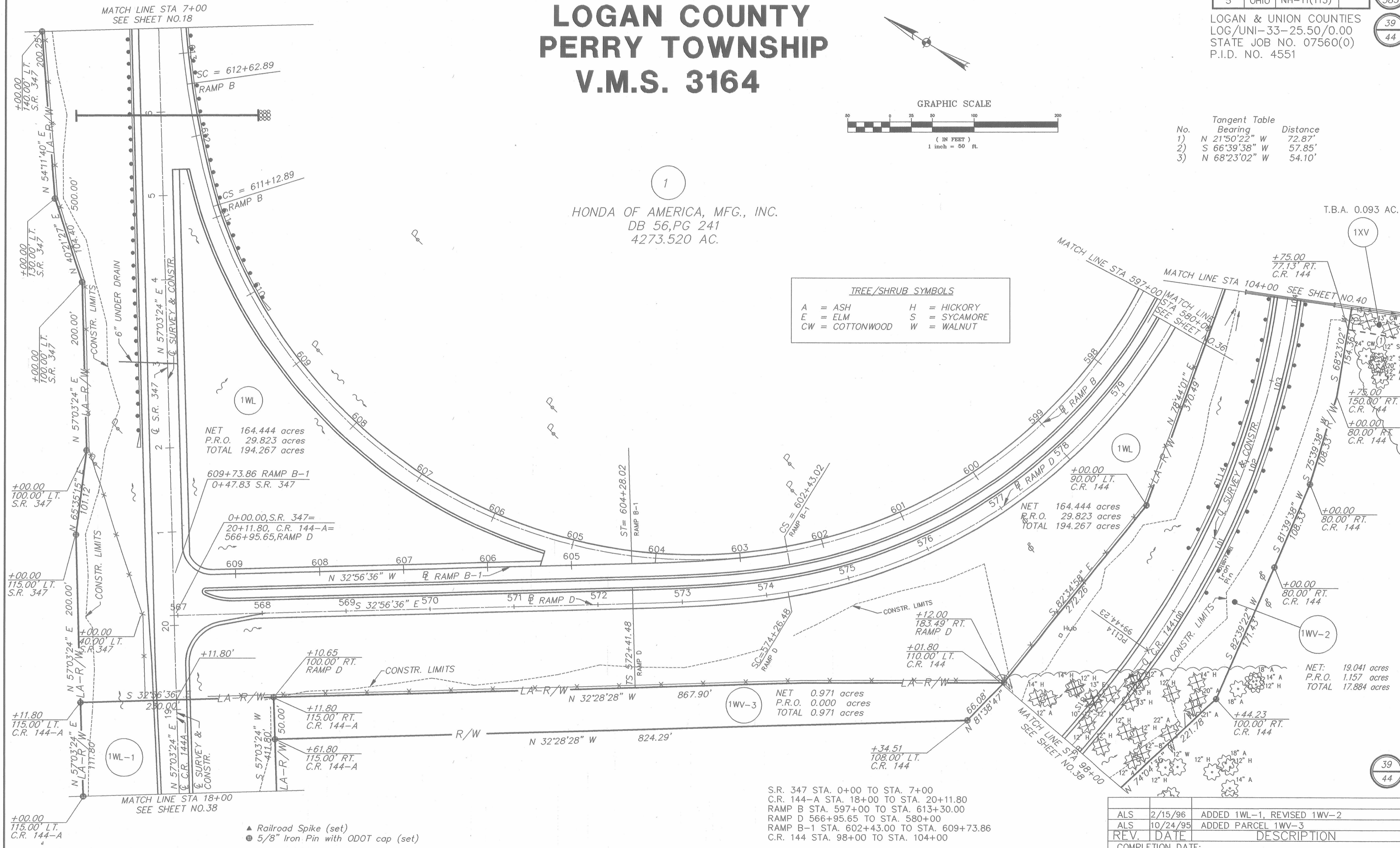
Tangent Table

No.	Bearing	Distance
1)	N 21°50'22" W	72.87'
2)	S 66°39'38" W	57.85'
3)	N 68°23'02" W	54.10'

HONDA OF AMERICA, MFG., INC.
 DB 56, PG 241
 4273.520 AC.

TREE/SHRUB SYMBOLS

A = ASH	H = HICKORY
E = ELM	S = SYCAMORE
CW = COTTONWOOD	W = WALNUT



NET 164.444 acres
 P.R.O. 29.823 acres
 TOTAL 194.267 acres

NET 164.444 acres
 P.R.O. 29.823 acres
 TOTAL 194.267 acres

NET 0.971 acres
 P.R.O. 0.000 acres
 TOTAL 0.971 acres

NET: 19.041 acres
 P.R.O. 1.157 acres
 TOTAL 17.884 acres

S.R. 347 STA. 0+00 TO STA. 7+00
 C.R. 144-A STA. 18+00 TO STA. 20+11.80
 RAMP B STA. 597+00 TO STA. 613+30.00
 RAMP D 566+95.65 TO STA. 580+00
 RAMP B-1 STA. 602+43.00 TO STA. 609+73.86
 C.R. 144 STA. 98+00 TO STA. 104+00

REV.	DATE	DESCRIPTION
ALS	2/15/96	ADDED 1WL-1, REVISED 1WV-2
ALS	10/24/95	ADDED PARCEL 1WV-3
REV.	DATE	DESCRIPTION
COMPLETION DATE:		

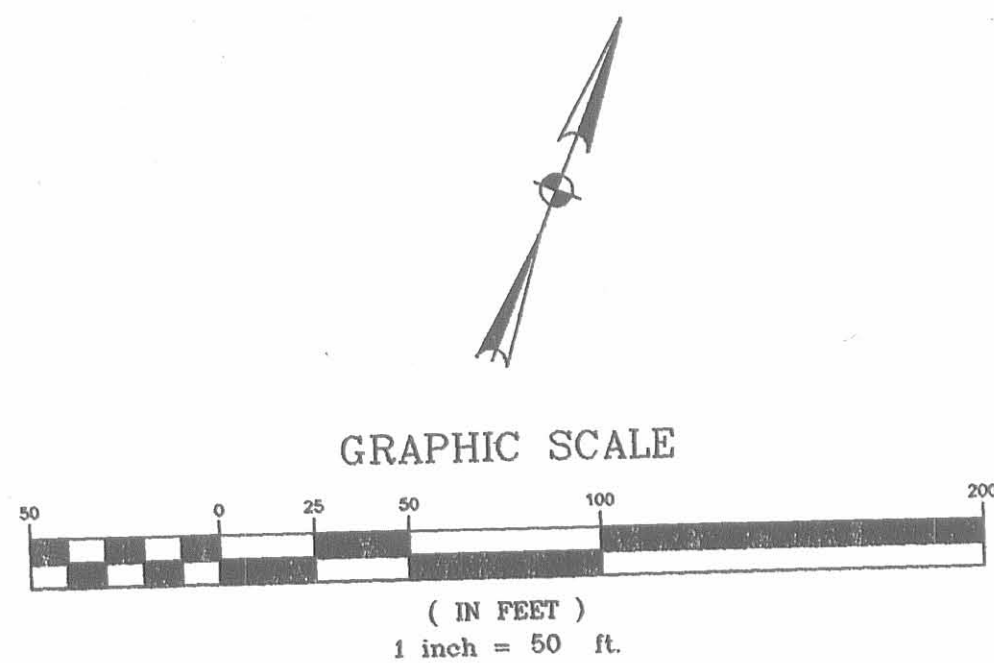
57001 ROW-021
 1/95 33.522 0.0
 STA. SVY 01/30/95

LOGAN COUNTY PERRY TOWNSHIP V.M.S. 3154, 3164

F.H.W.A. REGION	STATE	PROJECT	
5	OHIO	NH-11(115)	

LOGAN & UNION COUNTIES
LOG/UNI-33-25.50/0.00
STATE JOB NO. 07560(0)
P.I.D. NO. 4551

579
585
40
44



1
HONDA OF AMERICA, MFG., INC.
O.R. 56, PG 241
4273.520 AC.

NET 165.890 acres
P.R.O. 29.823 acres
TOTAL 195.713 acres

NET 165.890 acres
P.R.O. 29.823 acres
TOTAL 195.713 acres

NET: 19.041 acres
P.R.O. 1.157 acres
TOTAL 17.884 acres

T.B.A. 0.316 AC.

NET: 0.443 AC.
P.R.O. 0.138 AC.
TOTAL 0.581 AC.

UNITED TELEPHONE CO.
O.R. 359, PG 273
0.961 AC.

MARY ELOISE GREEN
O.R. 362, PG 245
151.012 AC.

NET: 8.913 AC.
P.R.O. 1.795 AC.
TOTAL 10.708 AC.

NET: 8.913 AC.
P.R.O. 1.795 AC.
TOTAL 10.708 AC.

REV.	DATE	DESCRIPTION

COMPLETION DATE: _____

Tangent Table

No.	Bearing	Distance
1)	N 66°39'38" E	57.85'
2)	N 24°50'22" W	71.25'
3)	S 68°23'02" W	54.10'
4)	S 13°19'09" W	20.02'
5)	N 84°39'04" W	188.39'
6)	S 13°19'09" W	30.79'
7)	S 10°11'33" W	307.00'
8)	N 10°11'33" E	43.73'

- ▲ Railroad Spike (set)
- 5/8" Iron Pin with ODOT cap (set)

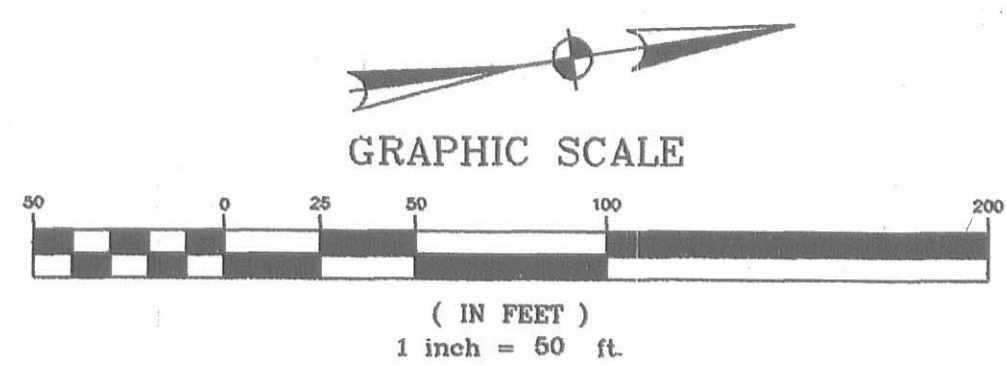
570E1/NOV/NOV-20
1:50 33.5/22.0 0.0
STA. SRVY 01/30/95 DML

LOGAN COUNTY PERRY TOWNSHIP V.M.S. 3154

F.H.W.A. REGION	STATE	PROJECT
5	OHIO	NH-11(115)

LOGAN & UNION COUNTIES
LOG/UNI-33-25.50/0.00
STATE JOB NO. 07560(0)
P.I.D. NO. 4551

581
585
42
44



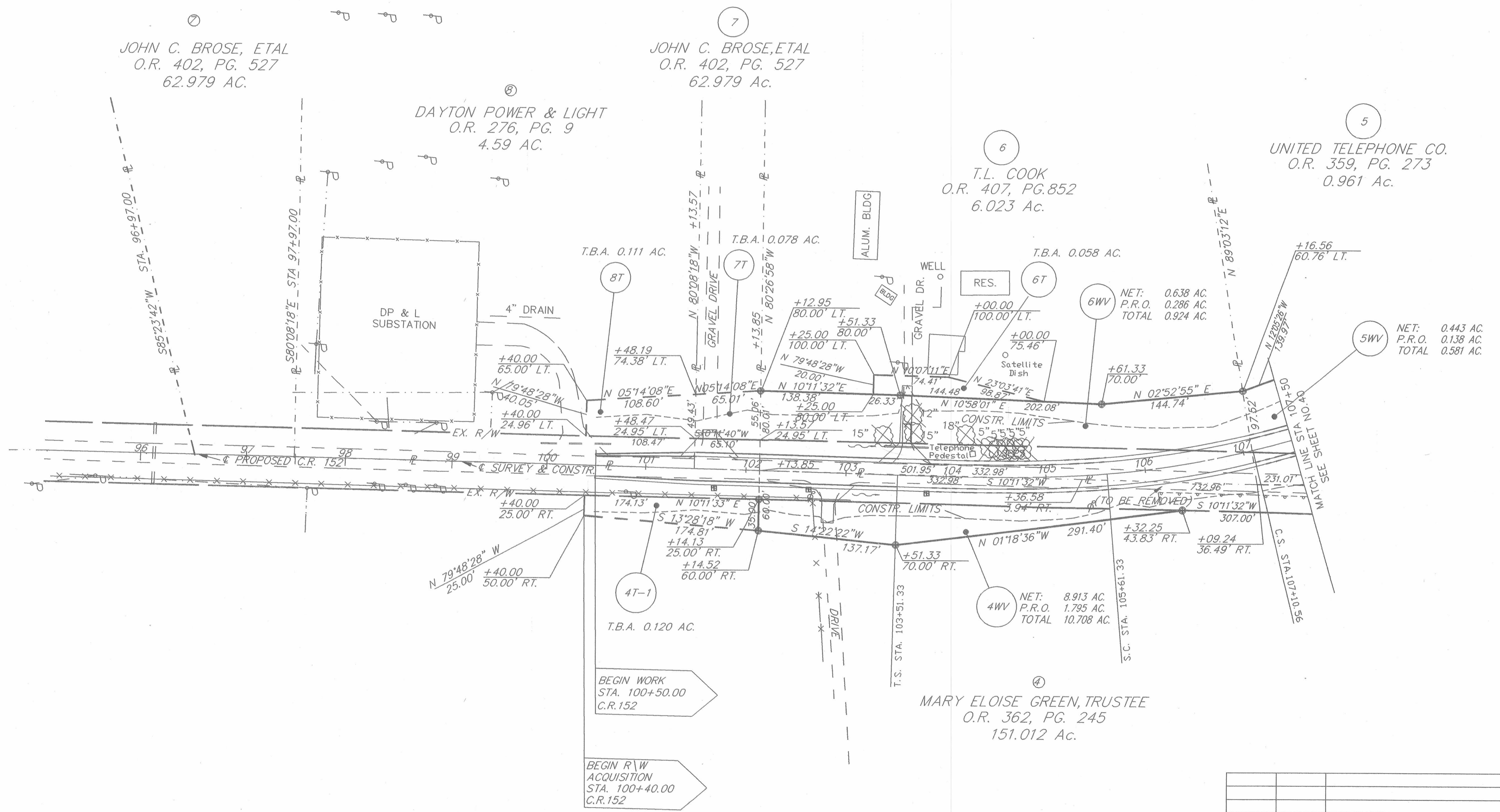
JOHN C. BROSE, ETAL
O.R. 402, PG. 527
62.979 AC.

JOHN C. BROSE, ETAL
O.R. 402, PG. 527
62.979 AC.

DAYTON POWER & LIGHT
O.R. 276, PG. 9
4.59 AC.

T.L. COOK
O.R. 407, PG. 852
6.023 AC.

UNITED TELEPHONE CO.
O.R. 359, PG. 273
0.961 AC.



▲ Railroad Spike (set)
⊙ 5/8" Iron Pin with ODOT cap (set)

REV.	DATE	DESCRIPTION

RIGHT-OF-WAY PLAN C.R. 152 STA. 100+50 TO STA. 107+50

UNION COUNTY ALLEN TOWNSHIP V.M.S. 4606 AND 4933

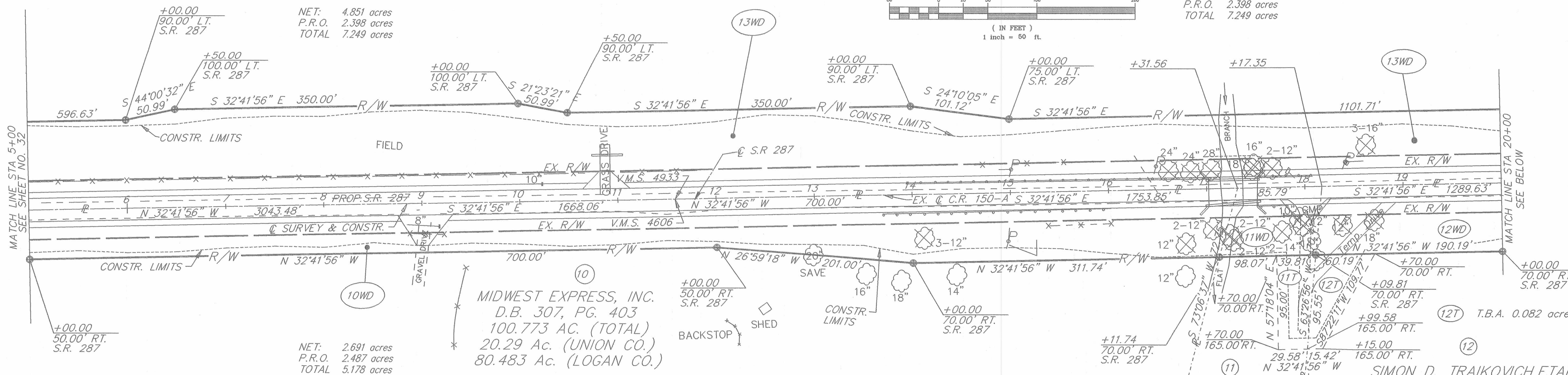
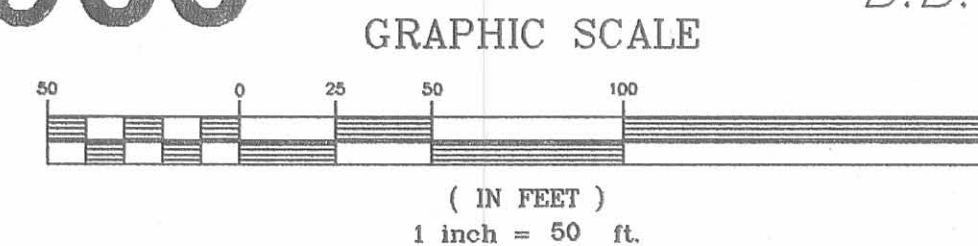
F.H.W.A. REGION	STATE	PROJECT	
5	OHIO	NH-11(115)	

LOGAN & UNION COUNTIES
LOG/UNI-33-25.50/0.00
STATE JOB NO. 07560(0)
P.I.D. NO. 4551

FIFTH THIRD BANK, TRUSTEE
D.B. 255, PG. 48 (63.101 Ac.)
B.B. 259, PG. 348 (33.03 Ac.)

FIFTH THIRD BANK, TRUSTEE
D.B. 255, PG. 48 (63.101 Ac.)
B.B. 259, PG. 348 (33.03 Ac.)

NET: 4.851 acres
P.R.O. 2.398 acres
TOTAL 7.249 acres



NET: 2.691 acres
P.R.O. 2.487 acres
TOTAL 5.178 acres

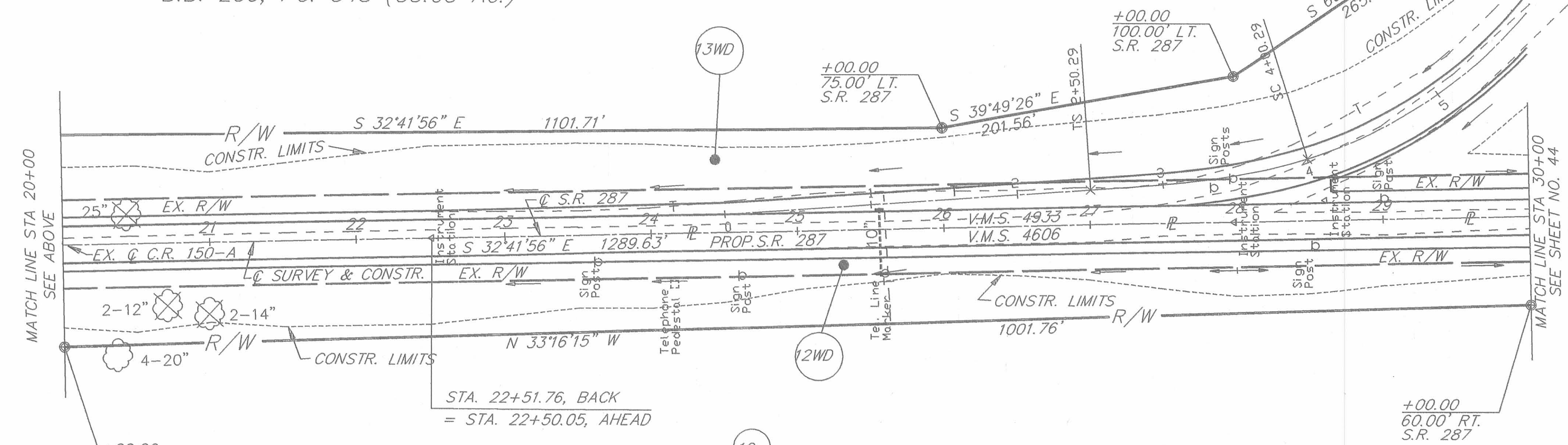
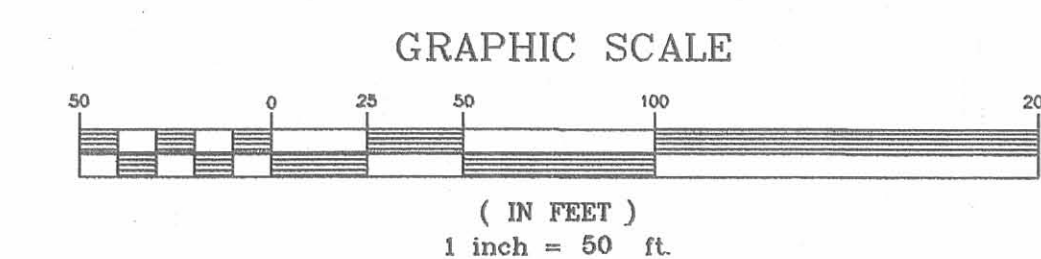
MIDWEST EXPRESS, INC.
D.B. 307, PG. 403
100.773 AC. (TOTAL)
20.29 AC. (UNION CO.)
80.483 AC. (LOGAN CO.)

NET: 0.087 acres
P.R.O. 0.061 acres
TOTAL 0.148 acres

UNION COUNTY ALLEN TOWNSHIP V.M.S. 4606 AND 4933

FIFTH THIRD BANK, TRUSTEE
D.B. 255, PG. 48 (63.101 Ac.)
B.B. 259, PG. 348 (33.03 Ac.)

NET: 4.851 acres
P.R.O. 2.398 acres
TOTAL 7.249 acres

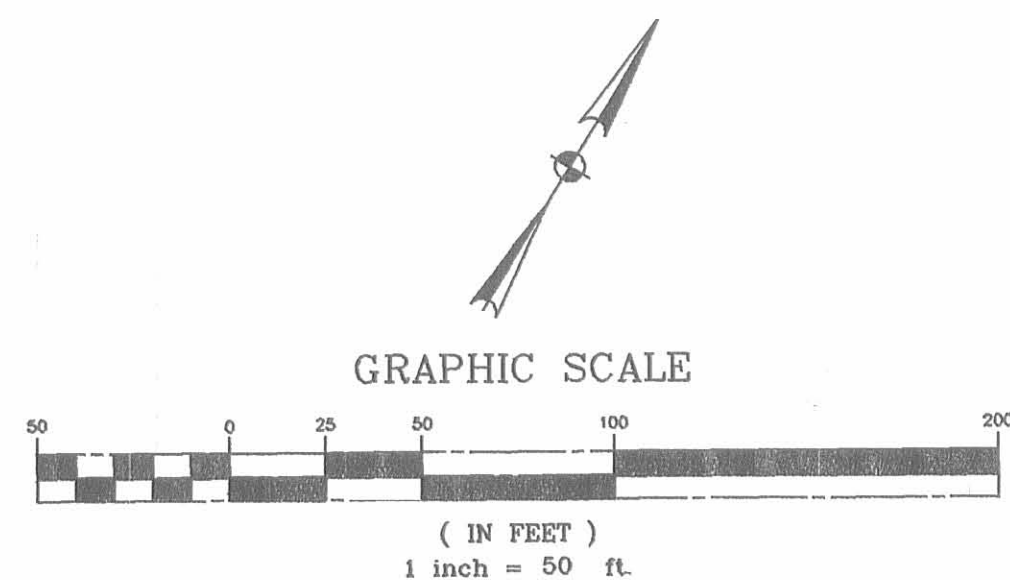


SIMON D. TRAIKOVICH, ETAL
D.B. 299, PG. 748
55.25 AC.

NET: 1.132 acres
P.R.O. 1.046 acres
TOTAL 2.178 acres

REV.	DATE	DESCRIPTION
als	3-21-96	REVISED RECORD AREA FOR PARCEL 13
als	3-5-96	added 11T and 12T

UNION COUNTY ALLEN TOWNSHIP V.M.S. 158, 4606 AND 4933

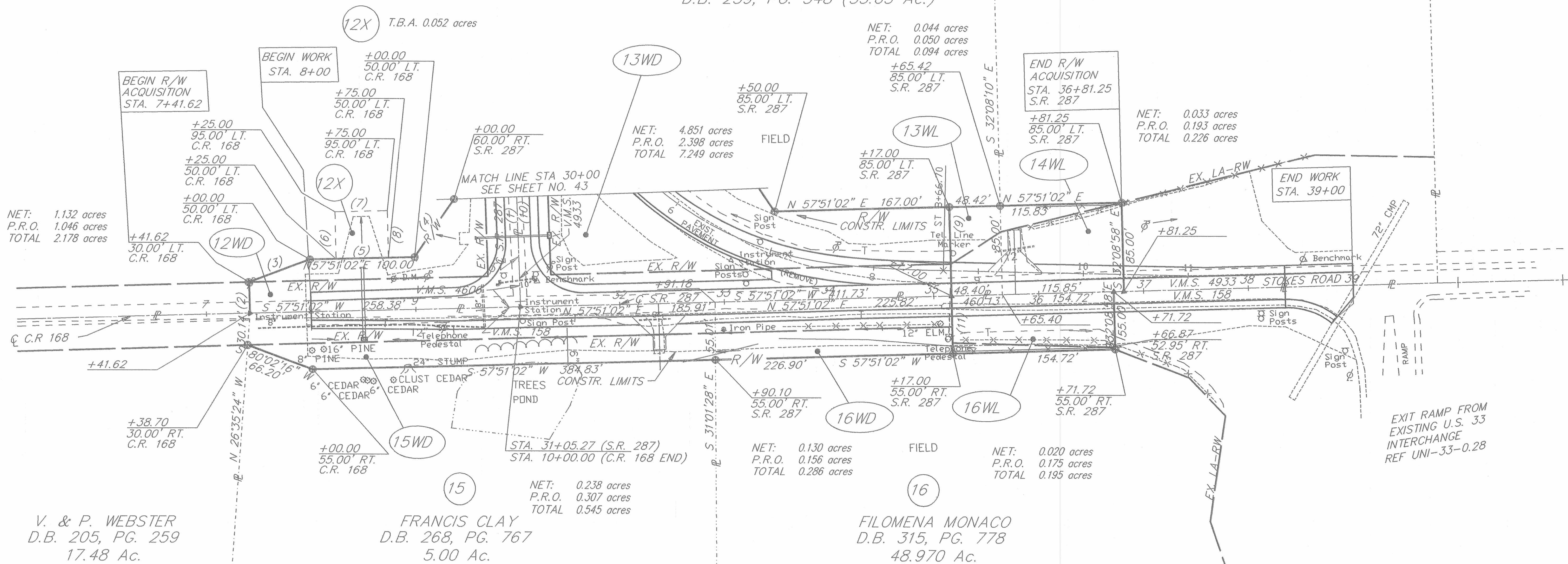


No.	Bearing	Distance
1)	S 32°41'56" W	1289.63'
2)	N 32°08'58" W	30.00'
3)	N 38°56'24" E	61.71'
4)	N 03°20'21" E	67.17'
5)	S 57°51'02" W	50.00'
6)	N 32°08'58" W	45.00'
7)	N 57°51'02" E	50.00'
8)	S 32°08'58" E	45.00'
9)	S 32°08'58" W	85.00'
10)	N 32°41'56" W	3043.48'
11)	S 32°08'58" E	55.00'

12
 SIMON D. TRAIKOVICH, ETAL
 D.B. 299, PG. 748
 55.25 Ac. (UNION CO.)

13
 FIFTH THIRD BANK TRUSTEE
 D.B. 255, PG. 48 (63.101 Ac.)
 D.B. 259, PG. 348 (33.03 Ac.)

14
 BREWERY INC.
 D.B. 305, PG. 510
 4.064 AC.



NET: 1.132 acres
 P.R.O. 1.046 acres
 TOTAL 2.178 acres

NET: 0.044 acres
 P.R.O. 0.050 acres
 TOTAL 0.094 acres

NET: 0.033 acres
 P.R.O. 0.193 acres
 TOTAL 0.226 acres

NET: 4.851 acres
 P.R.O. 2.398 acres
 TOTAL 7.249 acres

NET: 0.130 acres
 P.R.O. 0.156 acres
 TOTAL 0.286 acres

NET: 0.020 acres
 P.R.O. 0.175 acres
 TOTAL 0.195 acres

NET: 0.238 acres
 P.R.O. 0.307 acres
 TOTAL 0.545 acres

V. & P. WEBSTER
 D.B. 205, PG. 259
 17.48 Ac.

FRANCIS CLAY
 D.B. 268, PG. 767
 5.00 Ac.

FILOMENA MONACO
 D.B. 315, PG. 778
 48.970 Ac.

EXIT RAMP FROM
 EXISTING U.S. 33
 INTERCHANGE
 REF UNI-33-0.28

▲ Railroad Spike (set)
 ⊙ 5/8" Iron Pin with ODOT cap (set)

ALS	3/21/96	REVISED RECORD AREA FOR PARCEL 13
REV.	DATE	DESCRIPTION
COMPLETION DATE:		