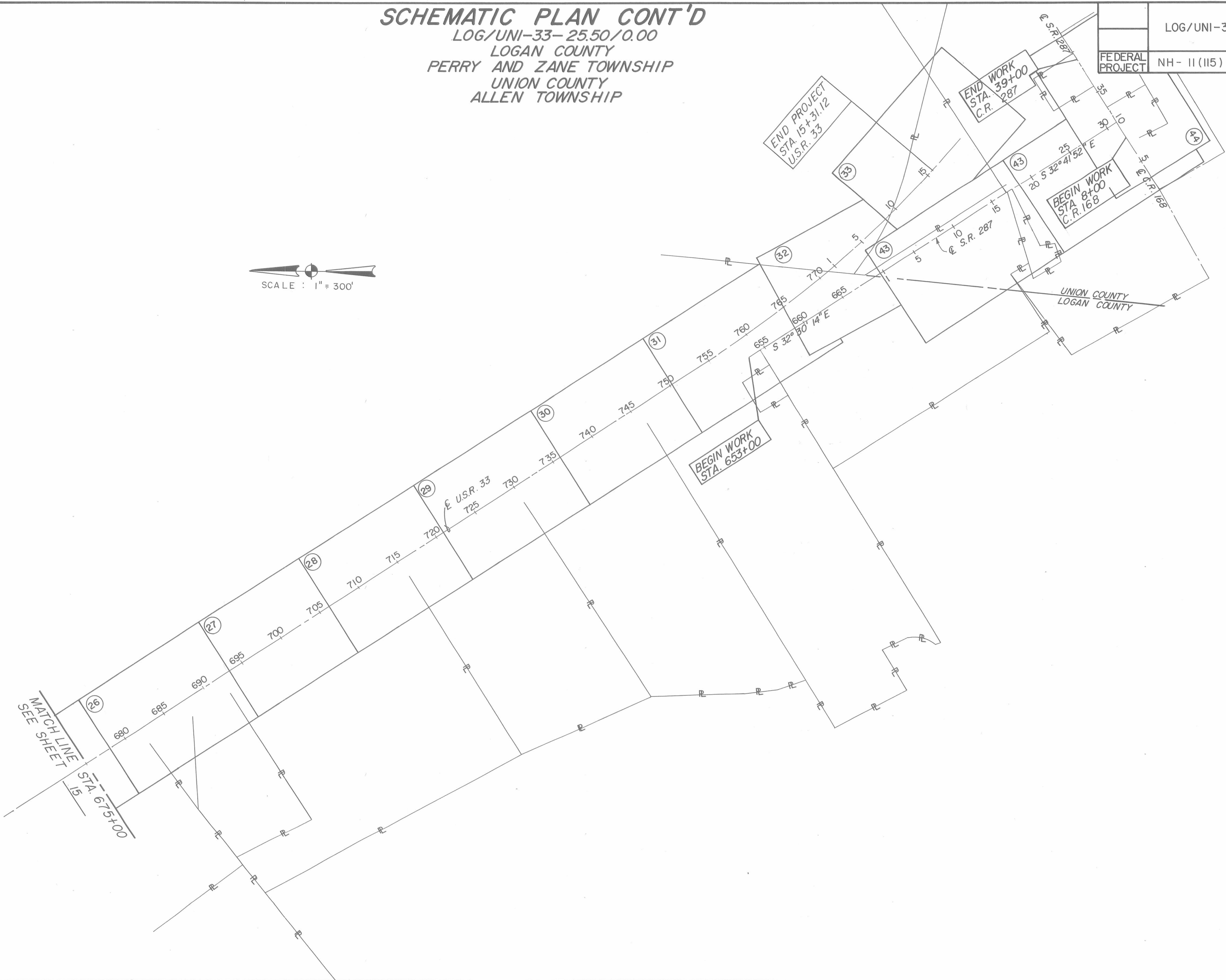
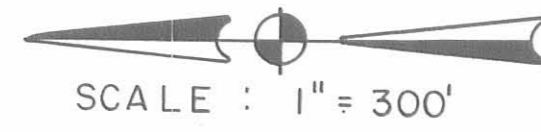


SCHEMATIC PLAN CONT'D

LOG/UNI-33-25.50/0.00

LOGAN COUNTY
PERRY AND ZANE TOWNSHIP
UNION COUNTY
ALLEN TOWNSHIP

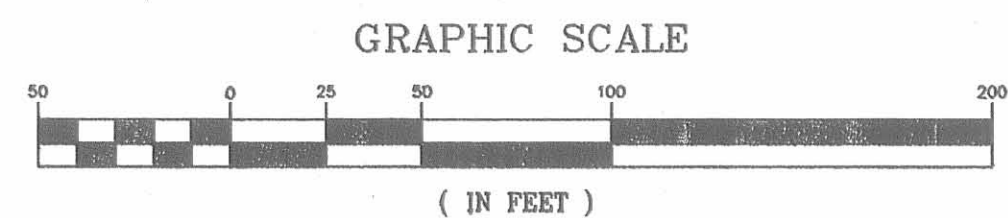
LOG/UNI-33-25.50/0.00		OHIO	555
		FHWA REGION	5
FEDERAL PROJECT	NH-11(115)	STATE PROJECT	07560 (0)
		PID. NO.	4551
		16	44



C.R. 296 CURVE DATA

Pls = 31+33.57	X = 164.998'	P.I. = 38+21.33	X = 209.75'
Dc = 0° 44'	Y = 0.581'	Δ = 42° 02' 22.29" LT	Y = 7.69'
R = 7813.06'	LT = 110.00'	Dc = 6° 00' 00"	LT = 140.09'
Ls = 165.00'	ST = 55.00'	R = 954.93'	ST = 70.08'
∅ = 0° 36' 18"	P = 0.1452'	Lc = 490.66'	P = 1092'
	K = 82.4997'	Ls = 210.00'	K = 104.96'
	e = .019 ft/ft	Ts = 472.64'	e = .083 ft/ft
		∅ = 6° 18' 00"	C = 485.2792'
			CB = N90°22'56.4"E

LOGAN COUNTY PERRY TOWNSHIP V.M.S. SURVEY 3164



F.H.W.A. REGION	STATE	PROJECT	556
5	OHIO	NH-11(115)	585

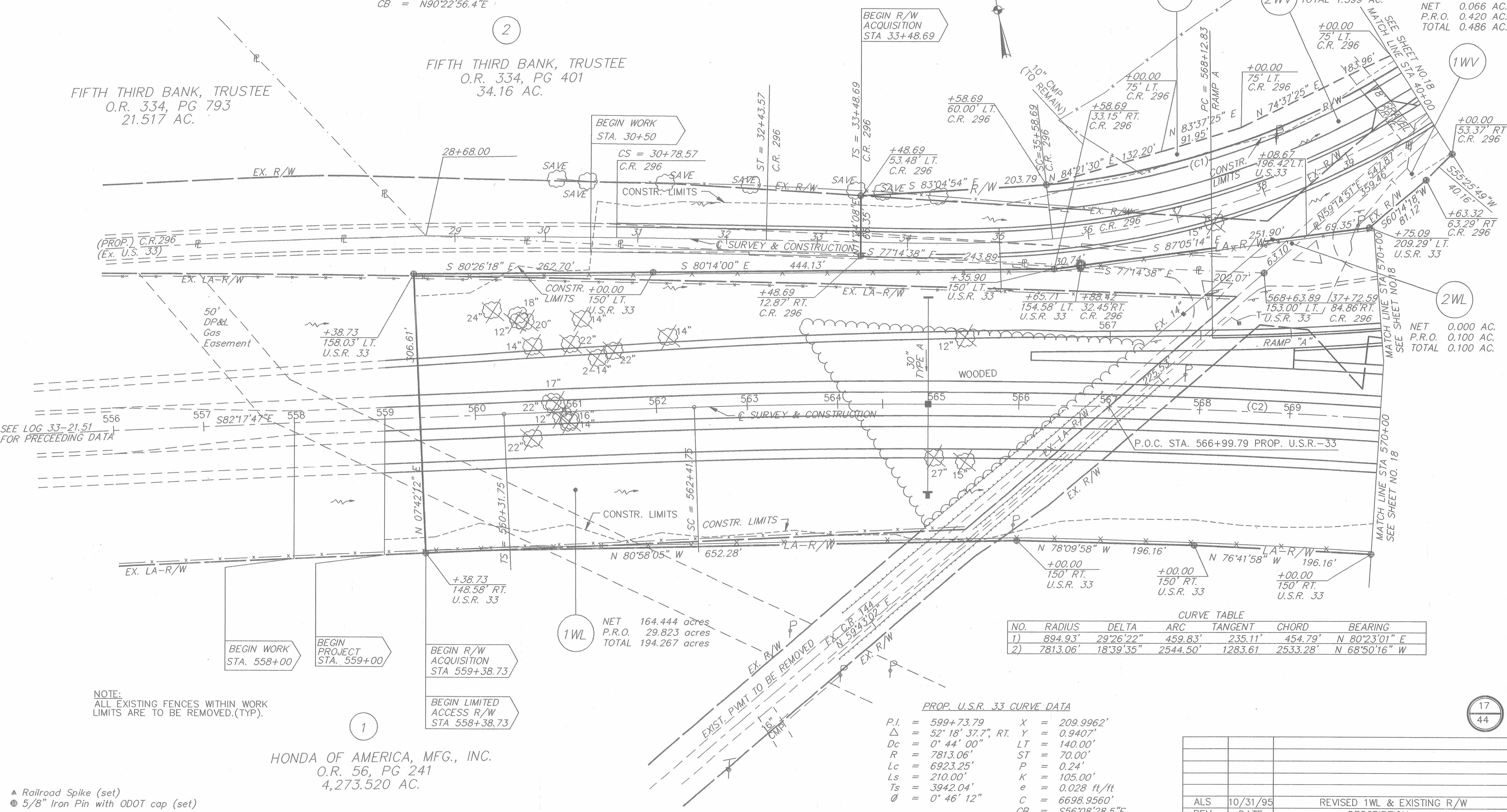
LOGAN & UNION COUNTIES
LOG/UNI-33-25.50/0.00
S.J.N. 07560(0)
P.I.D. 4551

NET 0.637 AC.
P.R.O. 0.962 AC.
TOTAL 1.599 AC.

NET 0.066 AC.
P.R.O. 0.420 AC.
TOTAL 0.486 AC.

FIFTH THIRD BANK, TRUSTEE
O.R. 334, PG 793
21.517 AC.

FIFTH THIRD BANK, TRUSTEE
O.R. 334, PG 401
34.16 AC.



1WL NET 164.444 acres
P.R.O. 29.823 acres
TOTAL 194.267 acres

CURVE TABLE

NO.	RADIUS	DELTA	ARC	TANGENT	CHORD	BEARING
1)	894.93'	29°26'22"	459.83'	235.11'	454.79'	N 80°23'01" E
2)	7813.06'	18°39'35"	2544.50'	1283.61'	2533.28'	N 68°50'16" W

PROP. U.S.R. 33 CURVE DATA

P.I. = 599+73.79	X = 209.9962'
Δ = 52° 18' 37.7" RT	Y = 0.9407'
Dc = 0° 44' 00"	LT = 140.00'
R = 7813.06'	ST = 70.00'
Lc = 6923.25'	P = 0.24'
Ls = 210.00'	K = 105.00'
Ts = 3942.04'	e = 0.028 ft/ft
∅ = 0° 46' 12"	C = 6698.9560'
	CB = S56°08'28.5"E

HONDA OF AMERICA, MFG., INC.
O.R. 56, PG 241
4,273.520 AC.

NOTE:
ALL EXISTING FENCES WITHIN WORK
LIMITS ARE TO BE REMOVED.(TYP).

▲ Railroad Spike (set)
● 5/8" Iron Pin with ODOT cap (set)

ALS	10/31/95	REVISED 1WL & EXISTING R/W
REV.	DATE	DESCRIPTION
COMPLETION DATE:		

57061/ROW/ROW-001
1-50 03/22/00
STA. SURV 02/06/95 DML

LOGAN COUNTY PERRY TOWNSHIP V.M.S. 3164

F.H.W.A. REGION	STATE	PROJECT
5	OHIO	NH-11(115)

557
585
18
44

LOGAN & UNION COUNTIES
LOG/UNI-33-25.50/0.00
S.J.N. 07560(0)
P.I.D. 4551

RAMP A CURVE DATA **RAMP A-1 CURVE DATA**

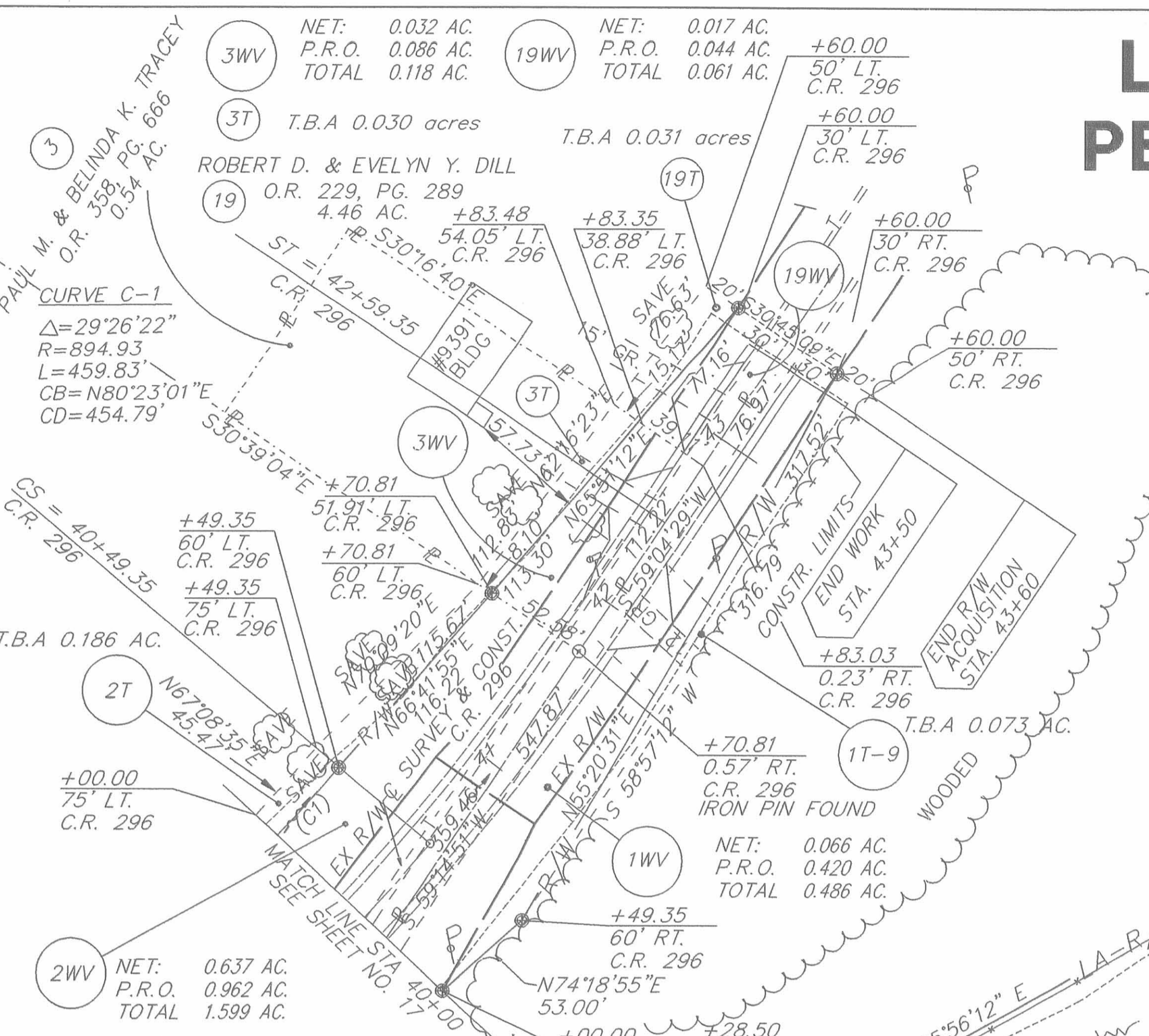
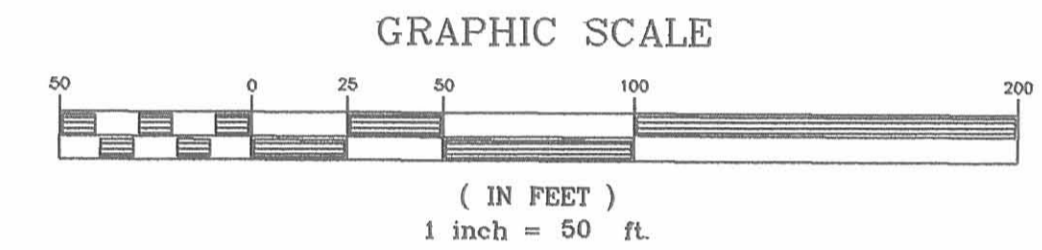
P.I. = 578+54.71	P.I. = 580+67.72
Δ = 39° 58' 16.5" LT	Δ = 15° 20' 23.6" RT
Dc = 2' 00' 00"	Dc = 11' 0' 0"
R = 2864.79'	R = 520.87'
L = 1998.56'	L = 139.45'
T = 1041.88'	T = 70.15'
C = 1958.28'	C = 139.04'
E = 183.58'	E = 4.70'
M = 172.52'	M = 4.66'
e = .052 ft/ft	e = .050 ft/ft
CB = N79°47'25.7"E	CB = N83°45'04.5"E

C.R. 296 CURVE DATA

Pls = 31+33.57	X = 164.998'
Dc = 0' 44"	Y = 0.581'
R = 7813.06'	LT = 110.00'
Ls = 165.00'	ST = 55.00'
∅ = 0' 36' 18"	P = 0.1452'
	K = 82.4997'
	e = .019 ft/ft

C.R. 296 CURVE DATA

P.I. = 38+21.33	X = 209.75'
Δ = 42° 02' 22.2" LT	Y = 7.69'
Dc = 6' 00' 00"	LT = 140.09'
R = 954.93'	ST = 70.08'
Lc = 490.66'	P = 1.511'
Ls = 210.00'	K = 82.467'
Ts = 472.64'	e = .083 ft/ft
∅ = 6' 18' 00"	



HONDA OF AMERICA, MFG., INC.
O.R. 56, PG 241
4273.520 Ac.

1WL NET 165.890 acres
P.R.O. 29.823 acres
TOTAL 195.713 acres

RAMP A-1 CURVE DATA

P.I. = 581+73.98
Δ = 35° 38' 8.1" RT
Dc = 49' 49' 20.8"
R = 115.00'
L = 71.53'
T = 36.96'
C = 70.38'
E = 5.79'
M = 5.52'
e = .027 ft/ft
CB = S70°45'39.7"E

PROP. U.S.R. 33 CURVE DATA

P.I. = 599+73.79	X = 209.9962'
Δ = 52° 18' 37.7" RT	Y = 0.9407'
Dc = 0' 44' 00"	LT = 140.00'
R = 7813.06'	ST = 70.00'
Lc = 6923.25'	P = 0.24'
Ls = 210.00'	K = 105.00'
Ts = 3942.04'	e = 0.028 ft/ft
∅ = 0' 46' 12"	C = 6698.9560'
	CB = S56°08'28.5"E

NO.	RADIUS	DELTA	ARC	TANGENT	CHORD	BEARING
1)	894.93'	29°26'22"	459.83'	235.11'	454.79'	N 80°23'01" W
2)	7813.06'	18°39'35"	2544.50'	1283.61'	2533.27'	N 68°50'16" W

NO.	RADIUS	DELTA	ARC	TANGENT	CHORD	BEARING
3)	7813.06'	10°42'34"	1460.37'	732.32'	1458.25'	N 70°13'02" W

- ▲ Railroad Spike (set)
- 5/8" Iron Pin with ODOT cap (set)

ALS	8/14/96	REV. PARCEL 3 & ADDED PARCEL 19
REV.	DATE	DESCRIPTION
COMPLETION DATE:		

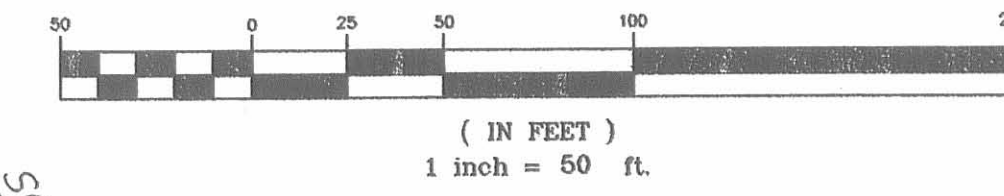
LOGAN COUNTY PERRY TOWNSHIP V.M.S. 3164 AND 3154

F.H.W.A. REGION	STATE	PROJECT
5	OHIO	NH-11(115)

LOGAN & UNION COUNTIES
LOG/UNI-33-25.50/0.00
S.J.N. 07560(0)
P.I.D. 4551

558
585
19
44

GRAPHIC SCALE



RAMP C CURVE DATA

P.I. = 588+29.63
 Δ = 24° 27' 06.9" RT
 Dc = 3' 15"
 R = 1762.95'
 L = 752.37'
 T = 382.00'
 C = 746.67'
 E = 40.91'
 M = 39.98'
 CB = S 47°-36'-24.2" E
 e = .054 ft/ft

TEMP ROAD D CURVE DATA

P.I. = 13+15.00
 Δ = 14° 50' 15" RT
 Dc = 6' 00" 00"
 R = 955.37'
 L = 247.41'
 T = 124.40'
 C = 246.72'
 E = 8.06'
 e = 0.20 ft/ft

TEMPORARY ROAD D
P.I. STA. 13+15.00

Δ = 14°50'15"
 Dc = 6'00'00"
 R = 955.37'
 L = 247.41'
 T = 124.40'
 C = 246.72'
 E = 8.06'
 e = 0.20 FT./FT.

CURVE TABLE

NO.	RADIUS	DELTA	ARC	TANGENT	CHORD	BEARING
1)	7813.06'	18°39'35"	2544.50'	1283.61'	2533.27'	N 68°50'16" W
2)	7813.06'	10°42'34"	1460.37'	732.32'	1458.25'	N 64°51'45" W

1WL NET 165.890 acres
 P.R.O. 29.823 acres
 TOTAL 195.713 acres

WOODS
 HONDA OF AMERICA, MFG., INC.
 O.R. 56, PG 241
 4,273.520 AC.

PROP. U.S.R. 33 CURVE DATA
 P.I. = 599+73.79 X = 299.9962'
 Δ = 52° 18' 37.7" RT. Y = 0.9407'
 Dc = 0° 44' 00" LT = 140.00'
 R = 7813.06' ST = 70.00'
 Lc = 6923.25' P = 0.24'
 Ls = 210.00' K = 105.00'
 Ts = 3942.04' e = 0.028 ft/ft
 ϕ = 0° 46' 12" CB = S56°08'28.5"E
 CD = 6698.9560'

RAMP C CURVE DATA
 PIs = 583+97.64 X = 149.97'
 Dc = 3' 15" Y = 2.13'
 R = 1762.95' LT = 100.01'
 Ls = 150.00' ST = 50.01'
 O = 2° 26' 15" P = 0.53'
 K = 75.00'
 e = .076 ft/ft

REV.	DATE	DESCRIPTION

COMPLETION DATE: _____

57021 ROW-003
 1-50 33.5.22.0 0.0
 300V 02-07-85 DML

LOGAN COUNTY PERRY TOWNSHIP V.M.S. 3154, 3164, 4811

F.H.W.A. REGION	STATE	PROJECT
5	OHIO	NH-11(115)

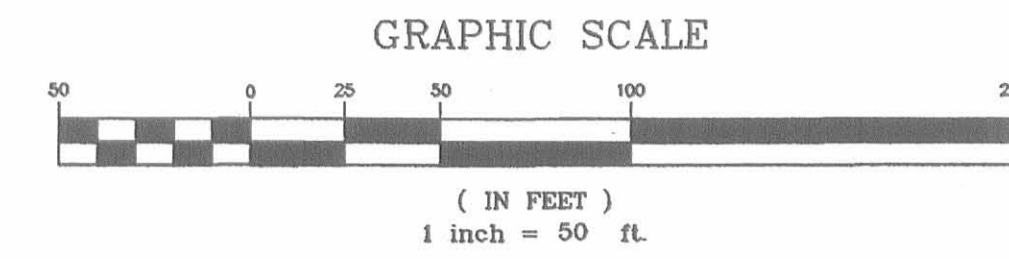
LOGAN & UNION COUNTIES
LOG/UNI-33-25.50/0.00
S.J.N. 07560(0)
P.I.D. 4551

559
585

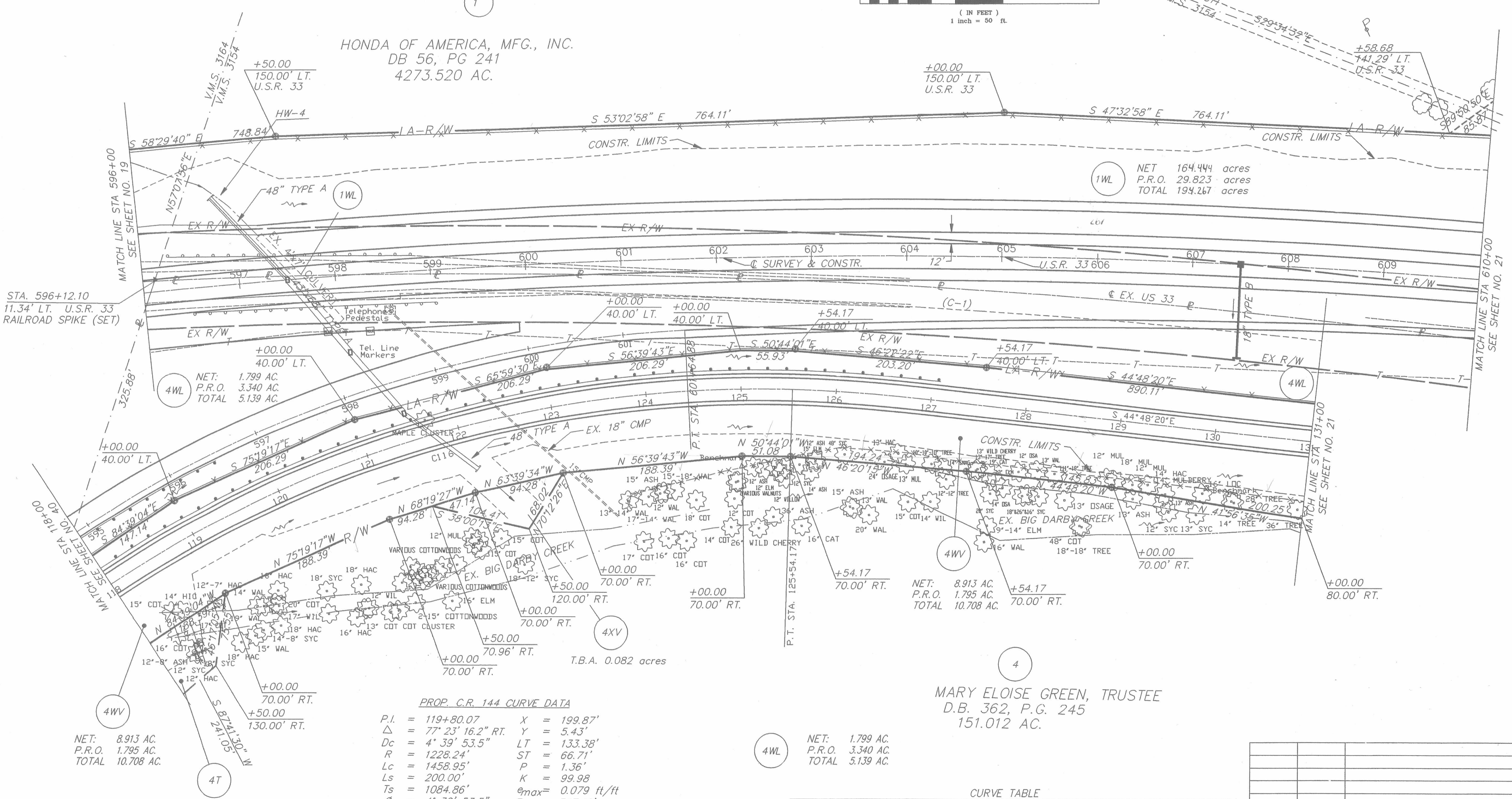
20
44

PROP. U.S.R. 33 CURVE DATA

P.I. = 599+73.79	X = 209.9962'
$\Delta = 52^\circ 18' 37.7''$ RT.	Y = 0.9407'
Dc = 0' 44' 00"	LT = 140.00'
R = 7813.06'	ST = 70.00'
Lc = 6923.25'	P = 0.24'
Ls = 210.00'	K = 105.00'
Ts = 3942.04'	e = 0.028 ft/ft
$\emptyset = 0^\circ 46' 12''$	C = 6698.9560'
	CB = S56°08'28.5"E



HONDA OF AMERICA, MFG., INC.
DB 56, PG 241
4273.520 AC.



NET 164.444 acres
P.R.O. 29.823 acres
TOTAL 194.267 acres

NET: 1.799 AC.
P.R.O. 3.340 AC.
TOTAL 5.139 AC.

NET: 8.913 AC.
P.R.O. 1.795 AC.
TOTAL 10.708 AC.

PROP. C.R. 144 CURVE DATA

P.I. = 119+80.07	X = 199.87'
$\Delta = 77^\circ 23' 16.2''$ RT.	Y = 5.43'
Dc = 4' 39' 53.5"	LT = 133.38'
R = 1228.24'	ST = 66.71'
Lc = 1458.95'	P = 1.36'
Ls = 200.00'	K = 99.98'
Ts = 1084.86'	$e_{max} = 0.079$ ft/ft
$\emptyset = 4^\circ 39' 53.5''$	Es = 347.16'
	$\Delta = 68^\circ 03' 29.1''$

MARY ELOISE GREEN, TRUSTEE
D.B. 362, P.G. 245
151.012 AC.

NO.	RADIUS	DELTA	ARC	TANGENT	CHORD	BEARING
1)	7813.06'	18°11'14"	2480.09'	1250.56'	2469.69'	N 44°39'12" W

REV.	DATE	DESCRIPTION

COMPLETION DATE: _____

▲ Railroad Spike (set) T.B.A. 0.409 AC.
● 5/8" Iron Pin with ODOT cap (set)

LOGAN COUNTY PERRY TOWNSHIP V.M.S. 3154 AND 4811

F.H.W.A. REGION	STATE	PROJECT
5	OHIO	

LOGAN & UNION COUNTIES
LOG/UNI-33-25.50/0.00
STATE JOB NO. 07560(O)
P.I.D. NO. 4551

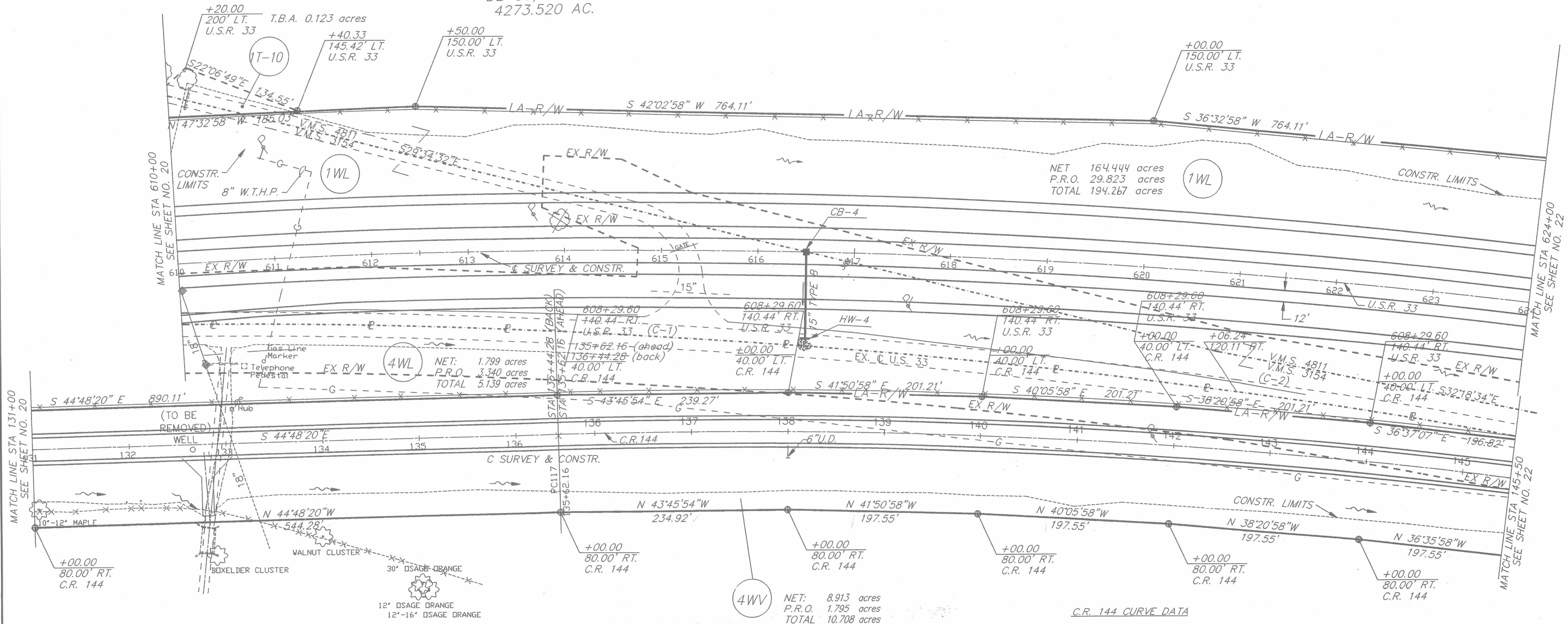
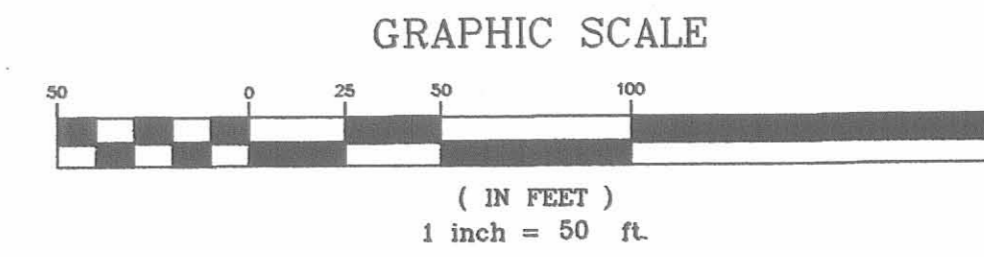
560
585
21
44

PROP. U.S.R. 33 CURVE DATA

P.I. = 599+73.79	X = 209.9962'
Δ = 52° 18' 37.7" RT.	Y = 0.9407'
Dc = 0° 44' 00"	LT = 140.00'
R = 7813.06'	ST = 70.00'
Lc = 6923.25'	P = 0.24'
Ls = 210.00'	K = 105.00'
Ts = 3942.04'	C = 6698.9560'
ϕ = 0° 46' 12"	CB = S 56°-08'-28.5" E
	e = 0.028 ft/ft

1

HONDA OF AMERICA, MFG., INC.
DB 56, PG 241
4273.520 AC.



4
MARY ELOISE GREEN, TRUSTEE
DB 362, PG 245
151.012 AC.

C.R. 144 CURVE DATA

P.I. = 143+84.42	Pls = 152+53.12
Δ = 14° 18' 52.7" RT.	Ls = 165.00'
Dc = 0° 52' 30"	ϕ = 0° 43' 18.8"
R = 6548.09'	Xc = 165.00'
T = 822.26'	Yc = 0.69'
L = 1635.96'	LT = 110.00'
E = 51.43'	ST = 55.00'
E_{max} = .022 ft/ft	P = 0.17'
	K = 82.50'
	E_{max} = .022 ft/ft

CURVE TABLE

NO.	RADIUS	DELTA	ARC	TANGENT	CHORD	BEARING
1)	7813.06'	18°11'14"	2480.09'	1250.56'	2469.69'	N 44°39'12" W
2)	5729.58'	03°22'58"	338.27'	169.18'	338.22'	N 33°52'07" W

REV.	DATE	DESCRIPTION

COMPLETION DATE: _____

▲ Railroad Spike (set)
⊕ 5/8" Iron Pin with ODOT cap (set)

LOGAN COUNTY PERRY TOWNSHIP V.M.S. 3154 AND 4811

U.S.R. 33 CURVE DATA

P.I. = 599+73.79	X = 209.9962'
Δ = 52° 18' 37.7" RT.	Y = 0.9407'
Dc = 0° 44' 00"	LT = 140.00'
R = 7813.06'	ST = 70.00'
Lc = 6923.25'	P = 0.24'
Ls = 210.00'	K = 105.00'
Ts = 3942.04'	C = 6698.9560'
∅ = 0° 46' 12"	CB = S 56°-08'-28.5" E
	e = 0.028 ft/ft

U.S. 33 CURVE DATA

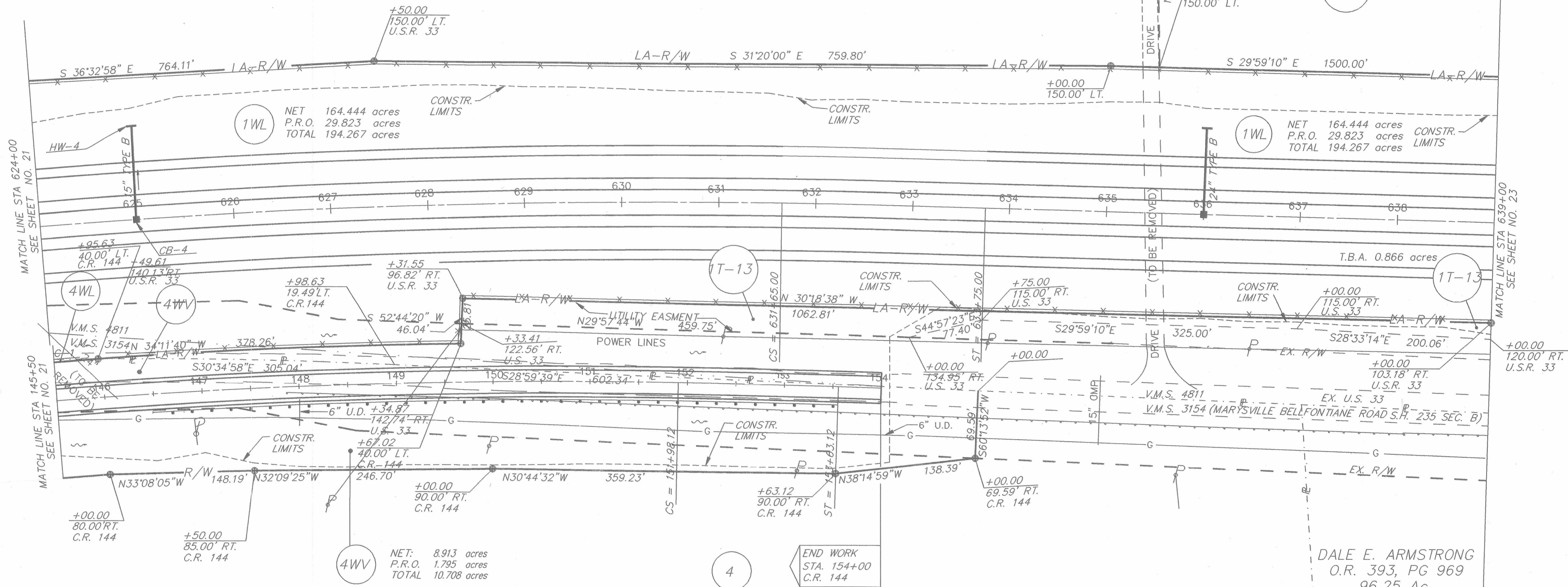
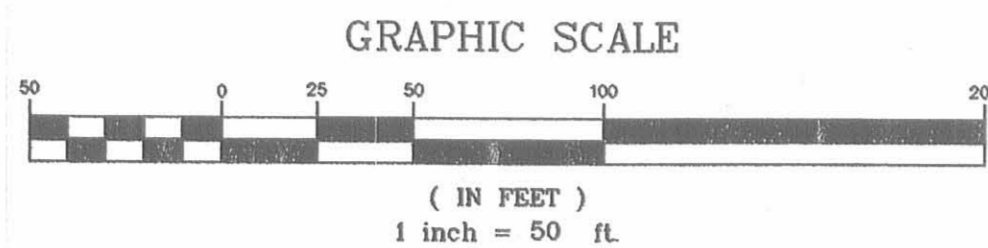
P.I. = 660+40.13
Δ = 02° 54' 47.5" LT.
Dc = 0° 16' 00"
R = 21485.92'
L = 1092.45'
T = 546.34'
C = 1092.33'
E = 6.95'
CB = S 31°-26'-33.4" E
e = NC

F.H.W.A. REGION	STATE	PROJECT
5	OHIO	NH-11(115)

LOGAN & UNION COUNTIES
LOG/UNI-33-25.50/0.00
STATE JOB NO. 07560(0)
P.I.D. NO. 4551

SEE SHEET 23A FOR DETAIL DRAWING OF 1T-11
T.B.A. 16.983 acres

HONDA OF AMERICA, MFG., INC.
O.R. 56 PG 241
4273.520 Ac.



1WL NET 164.444 acres
P.R.O. 29.823 acres
TOTAL 194.267 acres

1WL NET 164.444 acres
P.R.O. 29.823 acres
TOTAL 194.267 acres

4WW NET: 8.913 acres
P.R.O. 1.795 acres
TOTAL 10.708 acres

MARY ELOISE GREEN, TRUSTEE
O.R. 362, PG 245
151.012 Ac.

DALE E. ARMSTRONG
O.R. 393, PG 969
96.25 Ac.

C.R. 144 CURVE DATA

P.I. = 143+84.42	Pis = 152+53.12
Δ = 14° 18' 52.7" RT.	Ls = 165.00'
Dc = 0° 52' 30"	∅ = 0° 43' 18.8"
R = 6548.09'	Xc = 165.00'
T = 822.26'	Yc = 0.69'
L = 1635.96'	LT = 110.00'
E = 51.43'	ST = 55.00'
E _{max} = .022 ft/ft	P = 0.17'
	K = 82.50'
	E _{max} = .022 ft/ft

CURVE TABLE

NO.	RADIUS	DELTA	ARC	TANGENT	CHORD	BEARING
1)	5729.58'	03°22'58"	338.27'	169.18'	338.22'	N 33°52'07" W

ALS	2/26/96	REVISED 1T-13
ALS	10/24/95	REVISED 1T-11
REV. DATE		DESCRIPTION
COMPLETION DATE:		

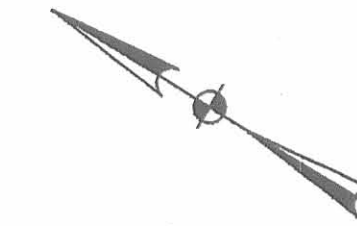
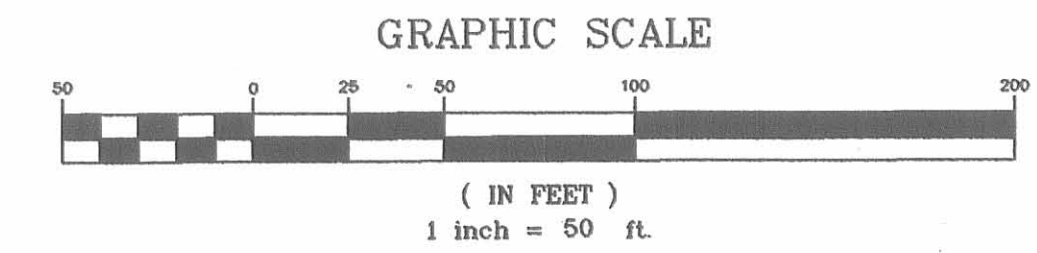
▲ Railroad Spike (set)
⊕ 5/8" Iron Pin with ODOT cap (set)

LOGAN COUNTY PERRY TOWNSHIP V.M.S. 3154 AND 4811

F.H.W.A. REGION	STATE	PROJECT
5	OHIO	NH-11(115)

LOGAN & UNION COUNTIES
LOG/UNI-33-25.50/0.00
STATE JOB NO. 07560(0)
P.I.D. NO. 4551

562
585
23
44

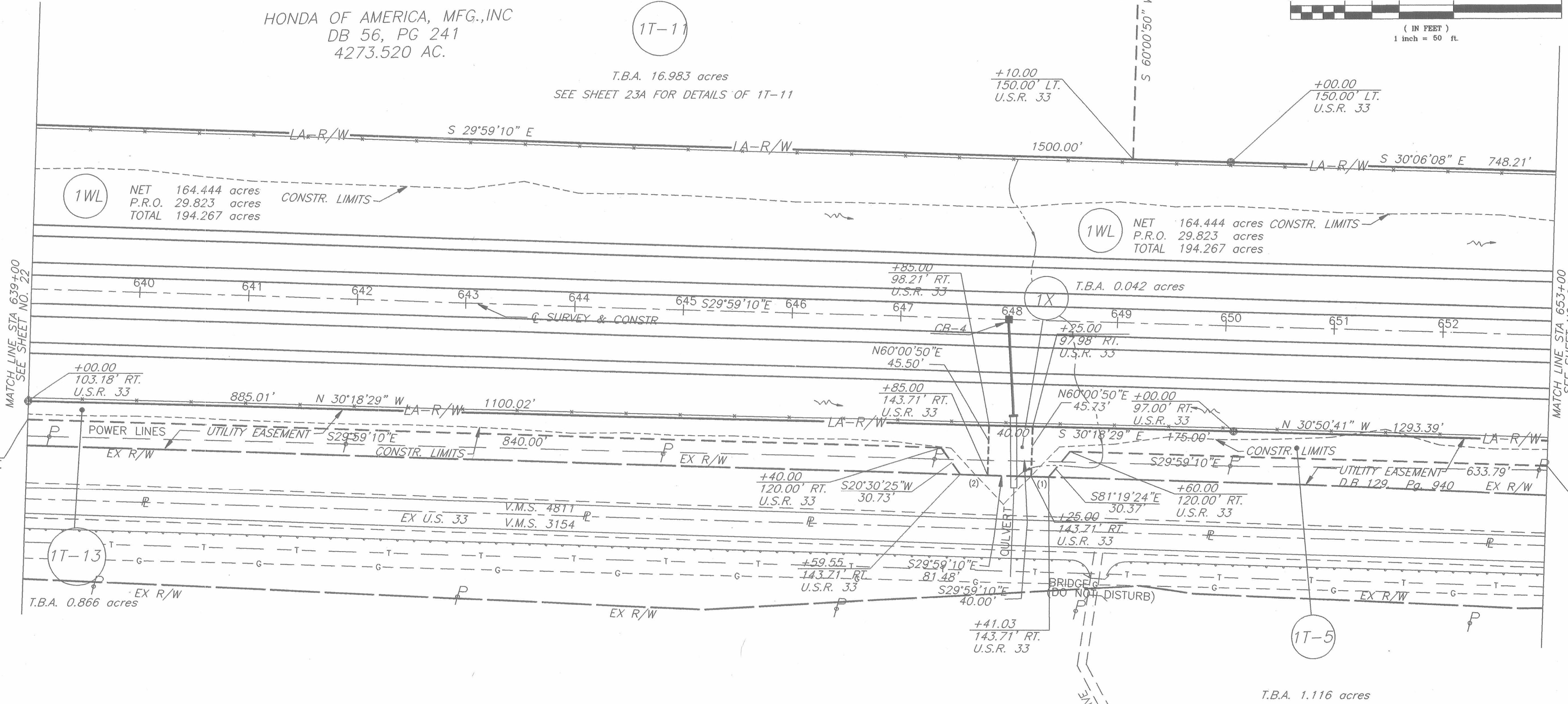


1

HONDA OF AMERICA, MFG., INC
DB 56, PG 241
4273.520 AC.

1T-11

T.B.A. 16.983 acres
SEE SHEET 23A FOR DETAILS OF 1T-11



MATCH LINE STA 639+00
SEE SHEET NO. 22

MATCH LINE STA 653+00
SEE SHEET NO. 24

DALE E. ARMSTRONG
D.B. 393, PG. 969
96.25 Ac.

BEARING TABLE

NO.	BEARING	DISTANCE
1)	S 29°59'10" E	16.03'
2)	N 29°59'10" W	25.45'

ALS	2/26/96	REVISED 1T-5 AND 1T-13
ALS	10/24/95	REVISED 1T-11
REV.	DATE	DESCRIPTION
COMPLETION DATE:		

- ▲ Railroad Spike (set)
- ⊕ 5/8" Iron Pin with ODOT cap (set)

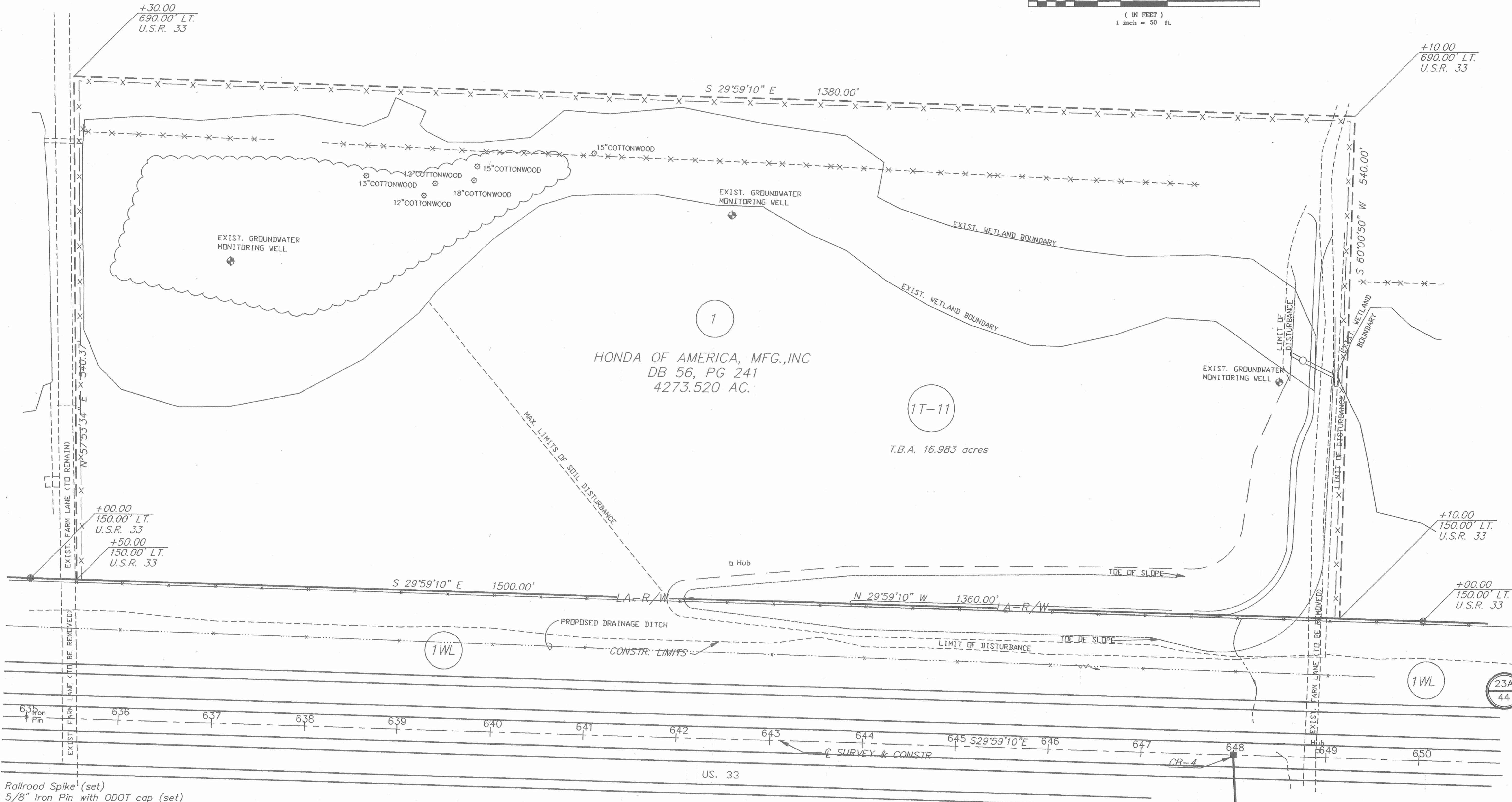
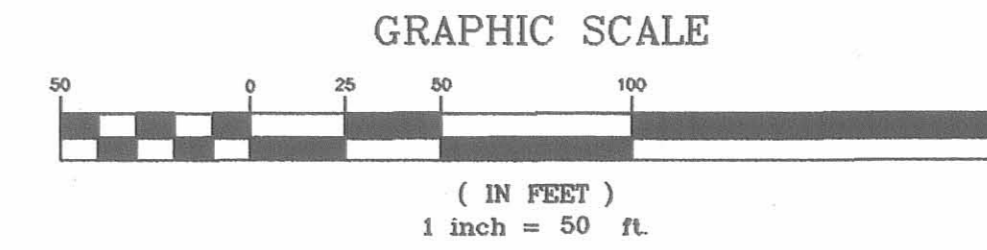
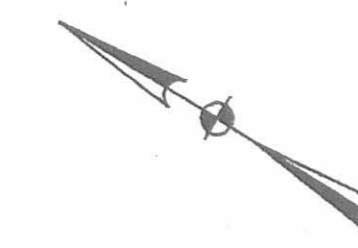
23
44

LOGAN COUNTY PERRY TOWNSHIP V.M.S. 3154 AND 4811

F.H.W.A. REGION	STATE	PROJECT	
5	OHIO	NH-11(115)	

562
585
23A
44

LOGAN & UNION COUNTIES
LOG/UNI-33-25.50/0.00
STATE JOB NO. 07560(0)
P.I.D. NO. 4551



▲ Railroad Spike (set)
⊕ 5/8" Iron Pin with ODOT cap (set)

570617/ROW-007
1:50 33.8.22.0 0.0
STA. SRVY 01/28/95 DML

RIGHT-OF-WAY PLAN DETAIL U.S.R. 33 STA. 635+00 TO STA. 650+00

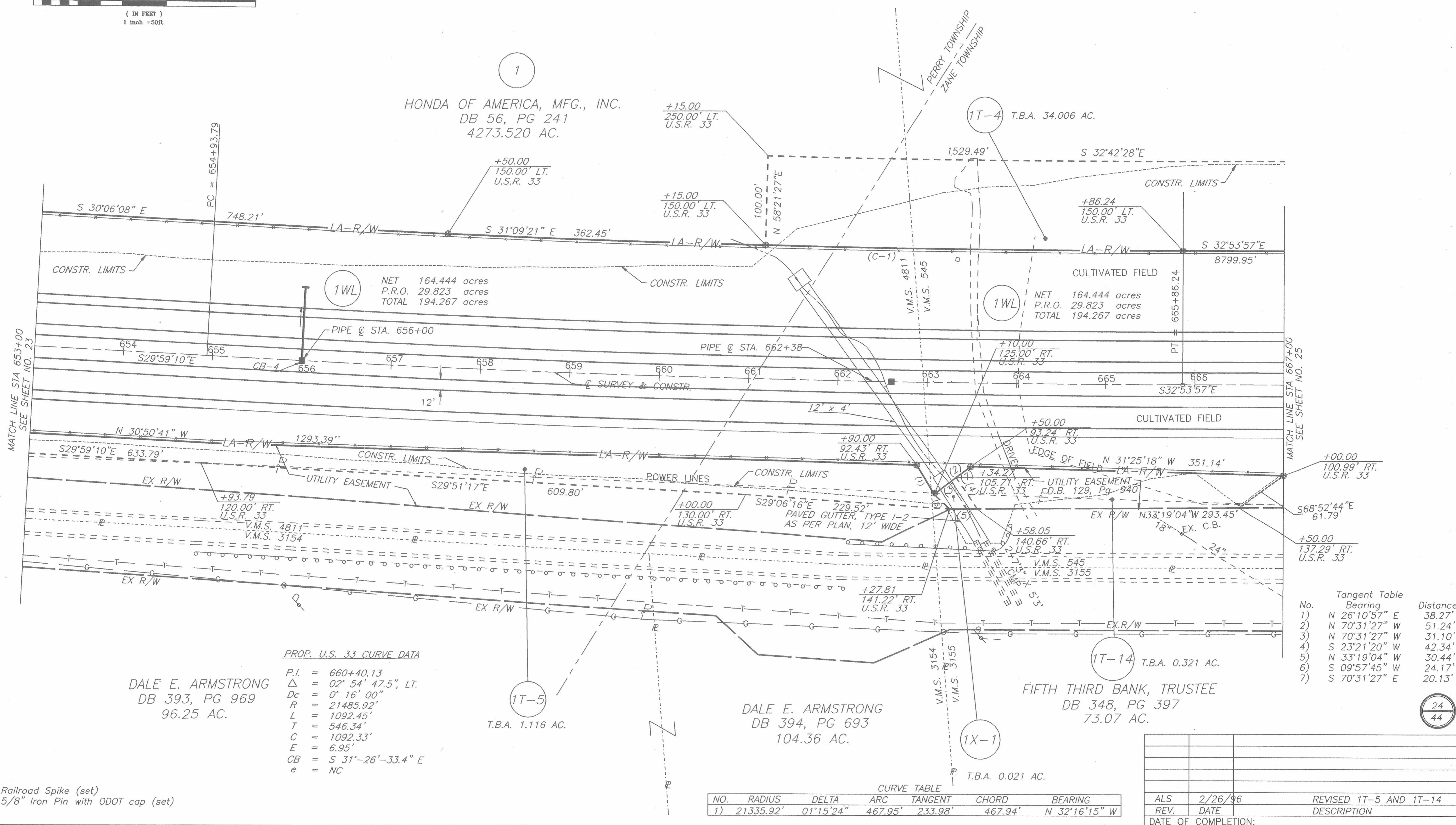
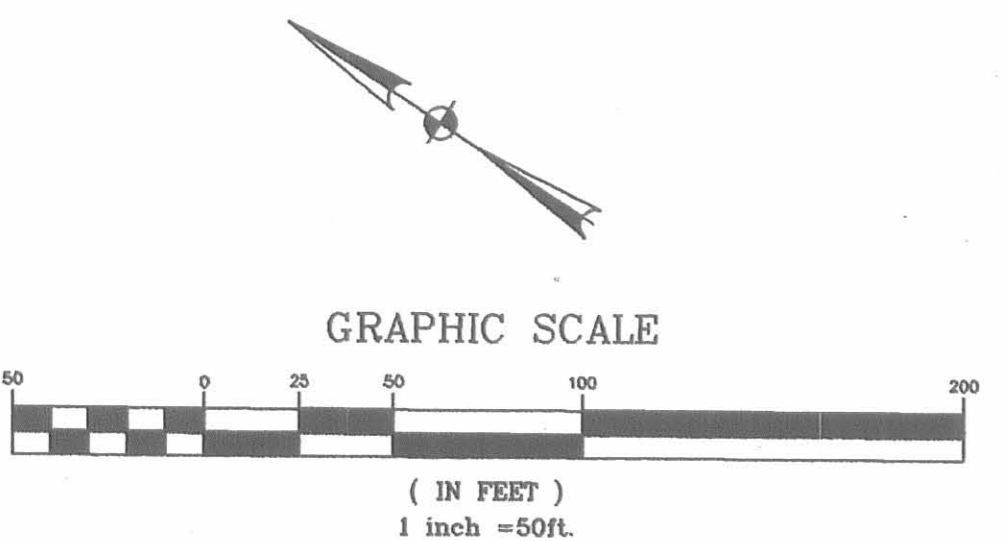
LOGAN COUNTY ZANE TOWNSHIP V.M.S. 545, 3154, 3155 AND 4811

F.H.W.A. REGION	STATE	PROJECT
5	OHIO	

LOGAN & UNION COUNTIES
LOG/UNI-33-25.50/0.00
STATE JOB NO. 07560(0)
P.I.D. NO. 4551

563
585

24
44



HONDA OF AMERICA, MFG., INC.
DB 56, PG 241
4273.520 AC.

1WL NET 164.444 acres
P.R.O. 29.823 acres
TOTAL 194.267 acres

1WL NET 164.444 acres
P.R.O. 29.823 acres
TOTAL 194.267 acres

PROP. U.S. 33 CURVE DATA

P.I. = 660+40.13
Δ = 02° 54' 47.5", LT.
Dc = 0' 16' 00"
R = 21485.92'
L = 1092.45'
T = 546.34'
C = 1092.33'
E = 6.95'
CB = S 31°-26'-33.4" E
e = NC

DALE E. ARMSTRONG
DB 393, PG 969
96.25 AC.

1T-5 T.B.A. 1.116 AC.

DALE E. ARMSTRONG
DB 394, PG 693
104.36 AC.

FIFTH THIRD BANK, TRUSTEE
DB 348, PG 397
73.07 AC.

Tangent Table

No.	Bearing	Distance
1)	N 26°10'57" E	38.27'
2)	N 70°31'27" W	51.24'
3)	N 70°31'27" W	31.10'
4)	S 23°21'20" W	42.34'
5)	N 33°19'04" W	30.44'
6)	S 09°57'45" W	24.17'
7)	S 70°31'27" E	20.13'

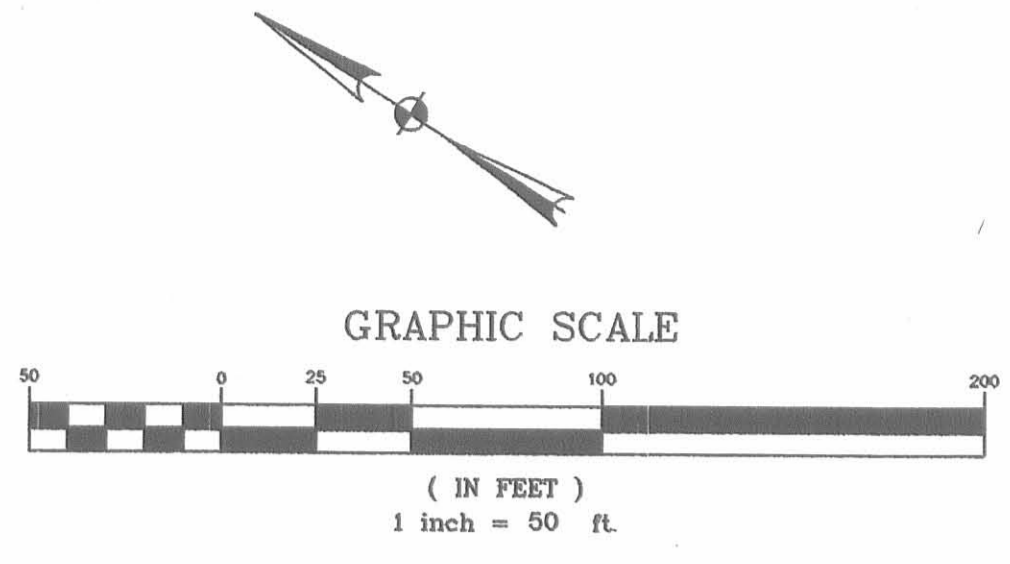
CURVE TABLE

NO.	RADIUS	DELTA	ARC	TANGENT	CHORD	BEARING
1)	21335.92'	01°15'24"	467.95'	233.98'	467.94'	N 32°16'15" W

ALS	2/26/96	REVISED 1T-5 AND 1T-14
REV.	DATE	DESCRIPTION
DATE OF COMPLETION:		

▲ Railroad Spike (set)
● 5/8" Iron Pin with ODOT cap (set)

57051\ROW\ROW-008
1490 333-220 0.0
STA. SURV 01/28/95 DAL



LOGAN COUNTY ZANE TOWNSHIP V.M.S. 545 AND 3155

F.H.W.A. REGION	STATE	PROJECT
5	OHIO	

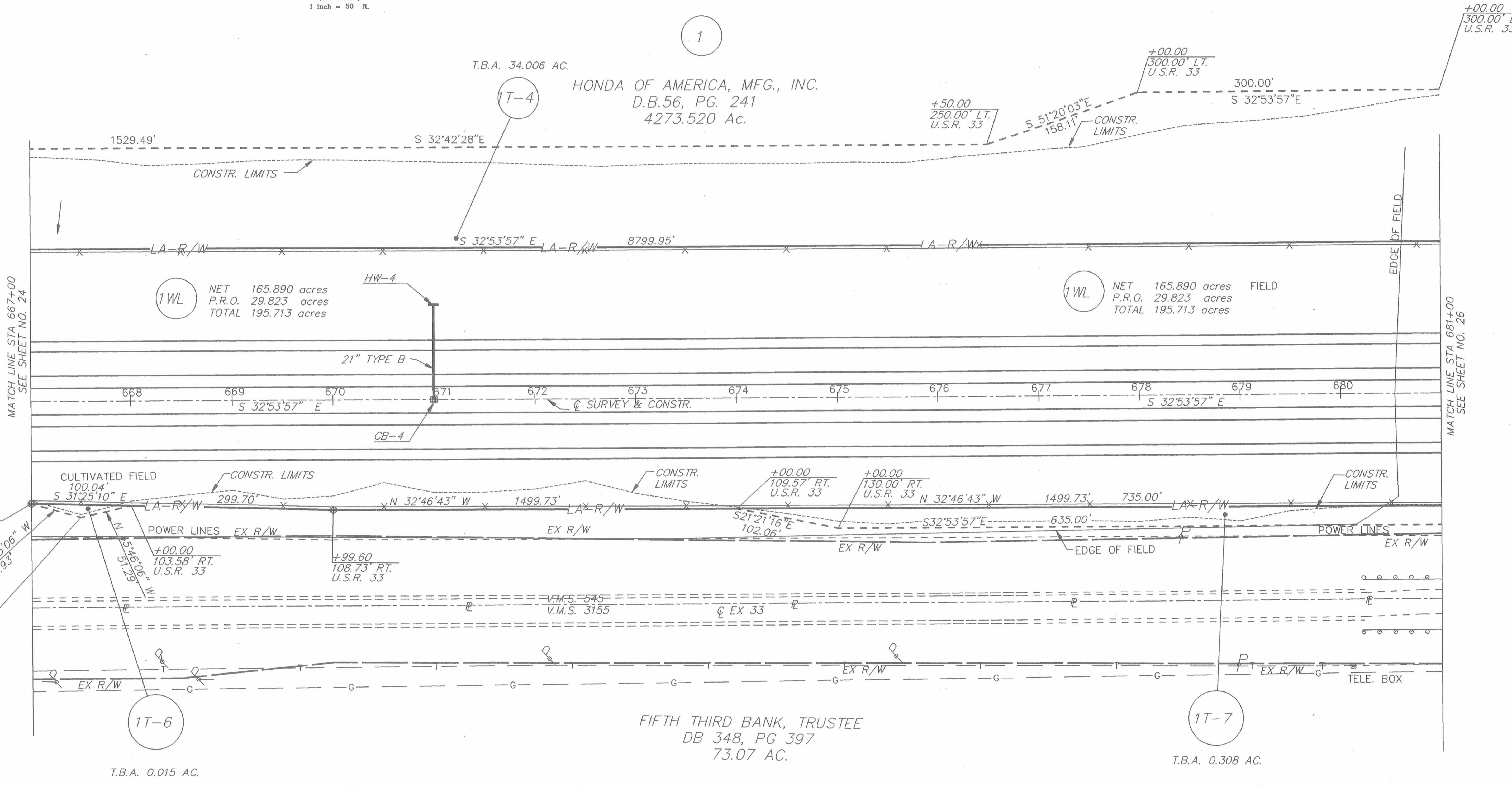
564
585

25
44

LOGAN & UNION COUNTIES
LOG/UNI-33-25.50/0.00
STATE JOB NO. 07560(0)
P.I.D. NO.4551

1

T.B.A. 34.006 AC.
HONDA OF AMERICA, MFG., INC.
D.B.56, PG. 241
4273.520 Ac.



MATCH LINE STA 667+00
SEE SHEET NO. 24

MATCH LINE STA 681+00
SEE SHEET NO. 26

- ▲ Railroad Spike (set)
- 5/8" Iron Pin with ODOT cap (set)

REV.	DATE	DESCRIPTION
COMPLETION DATE:		

570E1/ROW/ROW-009
1450 33.3.22.0 0.0
STA. SRVY 02/06/85 DAL

LOGAN COUNTY ZANE TOWNSHIP V.M.S. 545 AND 3155

F.H.W.A. REGION	STATE	PROJECT
5	OHIO	NH-11(115)

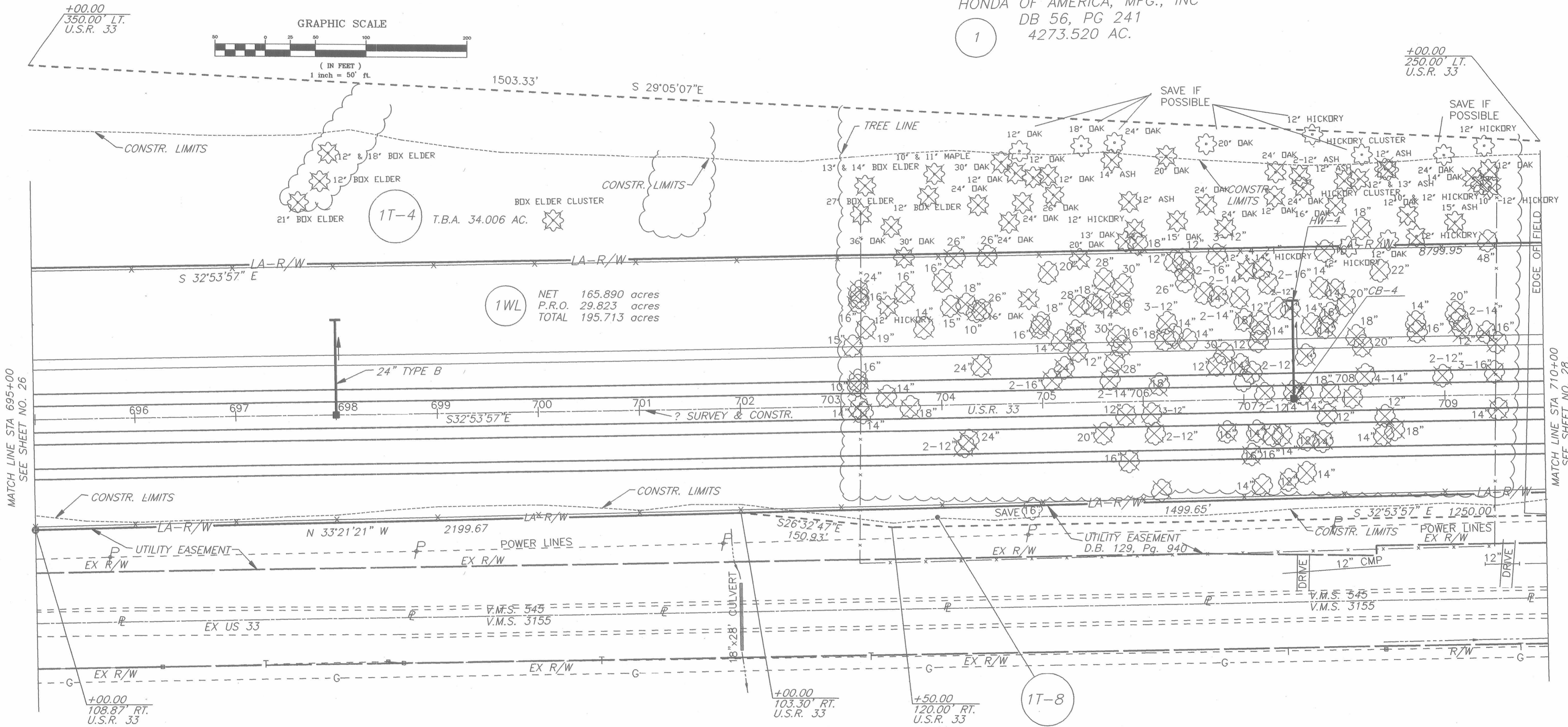
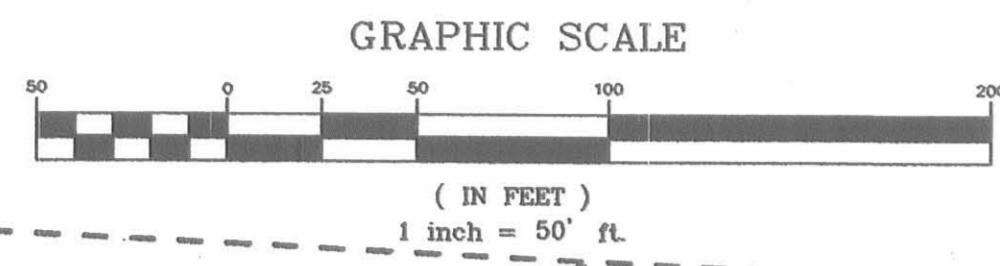
566
585

LOGAN & UNION COUNTIES
LOG/UNI-33-25.50/0.00
STATE JOB NO. 07560(0)
P.I.D. NO. 4551

27
44

HONDA OF AMERICA, MFG., INC
DB 56, PG 241
4273.520 AC.

1



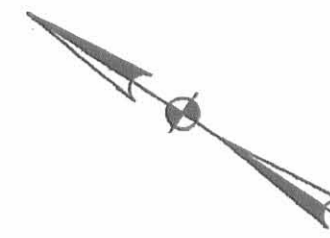
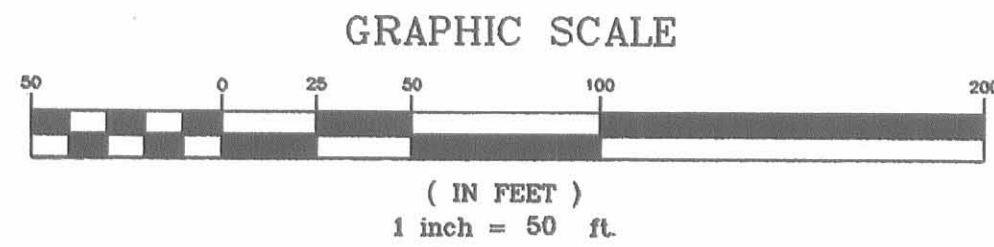
MATCH LINE STA 695+00
SEE SHEET NO. 26

MATCH LINE STA 710+00
SEE SHEET NO. 28

NOTE:
ALL EXISTING FENCES WITHIN CONSTRUCTION LIMITS
WILL BE REMOVED AT THE TIME OF CONSTRUCTION.

REV.	DATE	DESCRIPTION
COMPLETION DATE:		

- ▲ Railroad Spike (set)
- 5/8" Iron Pin with ODOT cap (set)



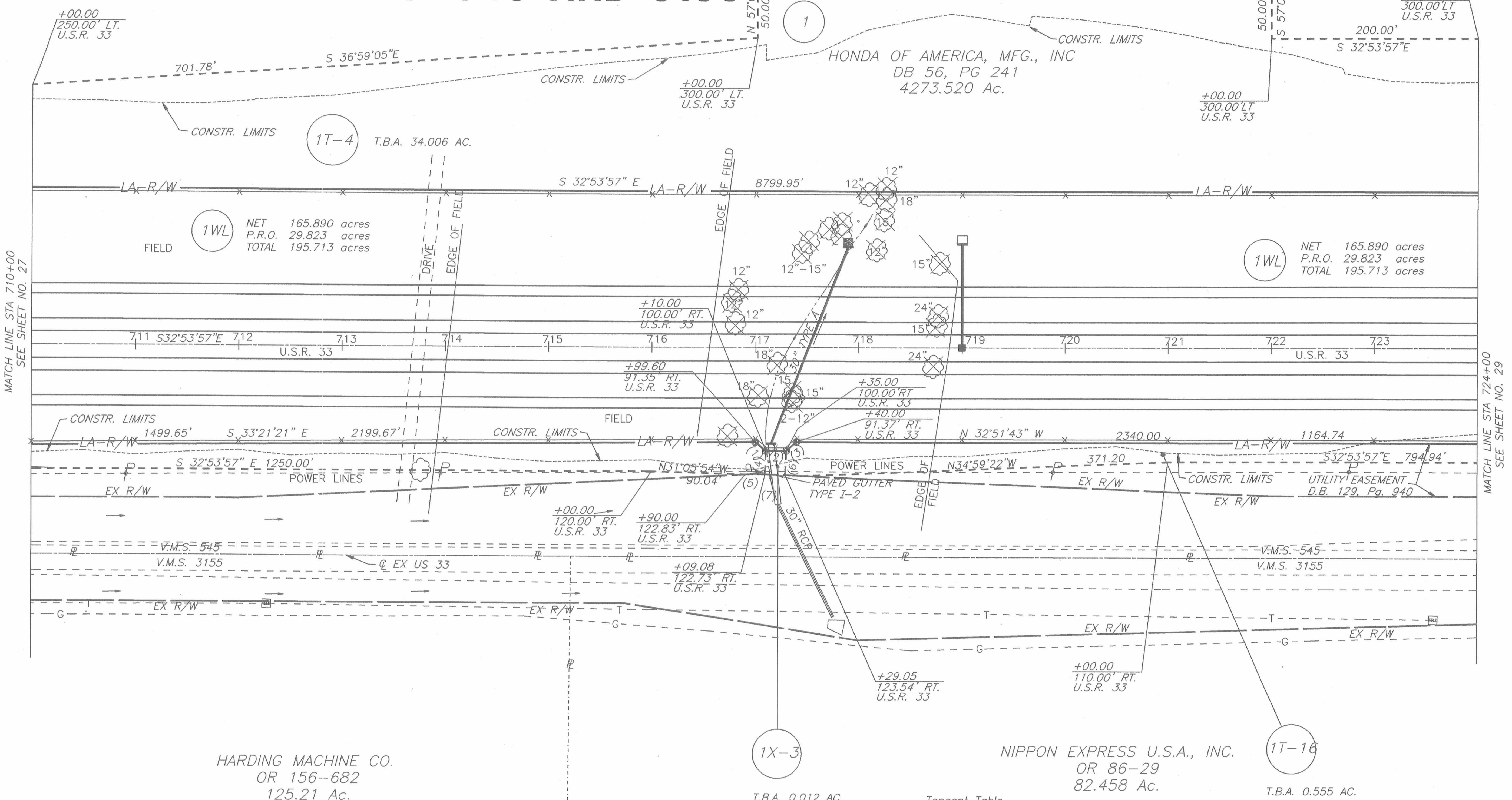
LOGAN COUNTY ZANE TOWNSHIP V.M.S. 545 AND 3155

F.H.W.A. REGION	STATE	PROJECT
5	OHIO	NH-11(115)

LOGAN & UNION COUNTIES
LOG/UNI-33-25.50/0.00
STATE JOB NO. 07560(0)
P.I.D. NO. 4551

567
585

28
44



Tangent Table

No.	Bearing	Distance
1)	N 06°51'08" W	13.53'
2)	N 32°53'57" W	25.00'
3)	S 87°11'16" W	9.97'
4)	S 59°25'07" W	22.75'
5)	S 33°11'58" E	19.08'
6)	S 71°17'09" W	24.28'
7)	S 31°28'58" E	55.02'

REV.	DATE	DESCRIPTION
COMPLETION DATE: _____		

▲ Railroad Spike (set)
⊙ 5/8" Iron Pin with ODOT cap (set)

5701\NOR-012
1=50 33.5.22.0 0.0
STA. SERV 02/01/95 DML