

STATE OF OHIO DEPARTMENT OF TRANSPORTATION

LOG~T.R.143~0.00
UNI~C.R.253~0.00/C.R.179~0.00

PERRY TOWNSHIP
LOGAN COUNTY
LIBERTY TOWNSHIP
UNION COUNTY

LOGAN COUNTY
LOG~T.R.143~0.00
UNION COUNTY
UNI~C.R.253~0.00/C.R.179~0.00

OHIO
FHWA
REGION 5



NOTE: LOG~T.R.143~0.00 APPEARING THROUGH OUT THIS PLAN SHALL BE CONSIDERED TO READ LOG~T.R.143~0.00, UNI~C.R.253~0.00/C.R.~179~0.00

RIGHT-OF-WAY ONLY

100% STATE

1989 SPECIFICATIONS

The standard specifications of the State of Ohio, Department of Transportation, including changes and supplemental specifications listed in the proposal shall govern this improvement.

I hereby approve these plans and declare that the making of this improvement will require the closing to traffic of the highway and that provisions for the maintenance and safety of traffic will be as set forth on the plans and estimates.

ACQUIRING AGENCY: STATE OF OHIO

Approved _____
Date _____ District Deputy Director of Transportation

Approved _____
Date _____ Assistant Deputy Director, Real Estate

Approved _____
Date _____ Engineer, Bureau of Bridges and Structural Design

Approved _____
Date _____ Chief Engineer, Planning & Design

Approved _____
Date _____ Director, Department of Transportation

CONVENTIONAL SIGNS

County Line	-----	Limited Access (only)	LA	-----	
Township Line	-----	Right of Way (only)	RW	-----	
Section Line	-----	Limited Access & Right of Way	LA&RW	-----	
Corporation Line	----- or -----	Existing Right of Way		-----	
Fence Line (existing)	---x---	Property Line (in existing fence)	**P**	---x---	
Center Line	-----	Railroad	----- or -----	-----	
Trees	⊙	Stumps	⊗	(to be removed) ⊗ ⊗	
Utility Poles: Telephone	⊕	Power	⊕	Light	⊕
		Guardrail (existing)	o-o-o	(proposed)	o-o-o

INDEX OF SHEETS

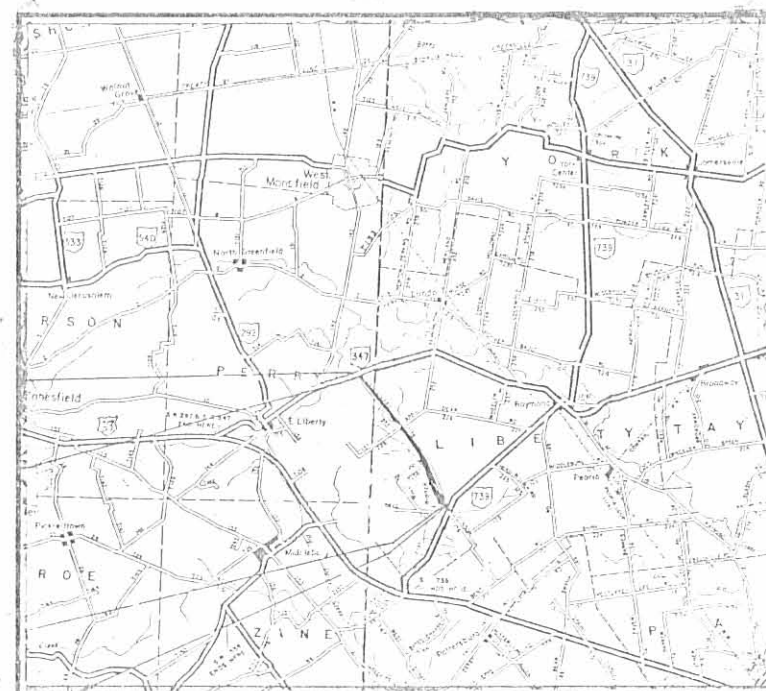
Title Sheet	1 THRU 4
Centerline Plat	5 AND 6
Property Map	7
Summary of Additional Right-Of-Way	8 THRU 16
Right-Of-Way Plan Sheets	

BEGIN WORK
STA. 68+93.88

BEGIN PROJECT
STA. 69+17.77

END PROJECT
STA. 254+70.15

END WORK
STA. 255+00.00



LOCATION MAP
SCALE IN MILES



Portion to be Improved _____
State & Federal Routes _____
Other Roads _____

SCALES

Plan: _____
0 25 50 100

Project: LOG~T.R.143~0.00
UNI~C.R.253~0.00/C.R.179~0.00
Date of Letting _____ 19__ Contract No. _____

Plan Prepared By:
DISTRICT NO. 7
OHIO DEPARTMENT OF
TRANSPORTATION

A:U143RWTP

L-58 A

L-58 A



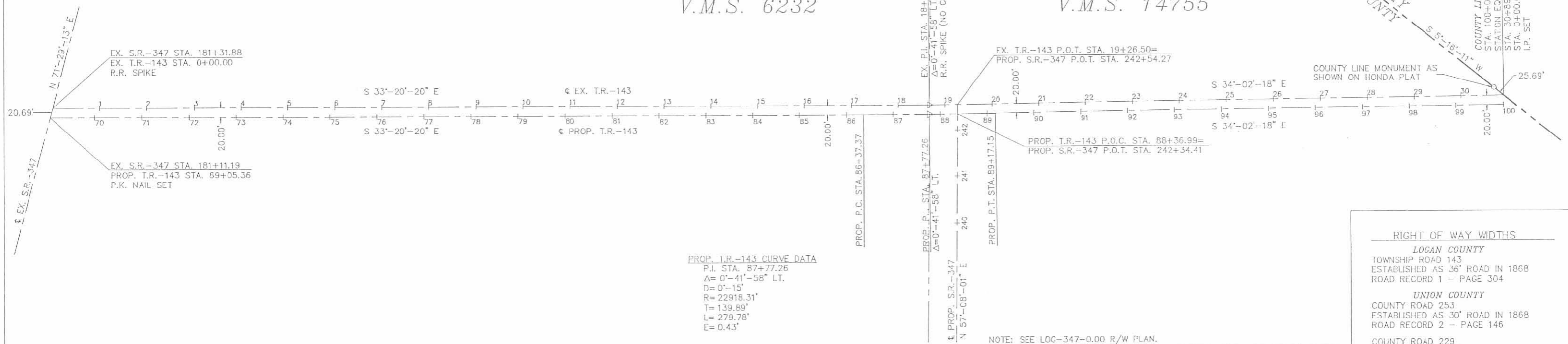
CENTERLINE PLAT LOGAN COUNTY PERRY TOWNSHIP

V.M.S. 6232

V.M.S. 14755

FHWA REGION	STATE	PROJECT	134 149
5	OHIO		1 16

LOGAN COUNTY
LOG-T.R.143-0.00



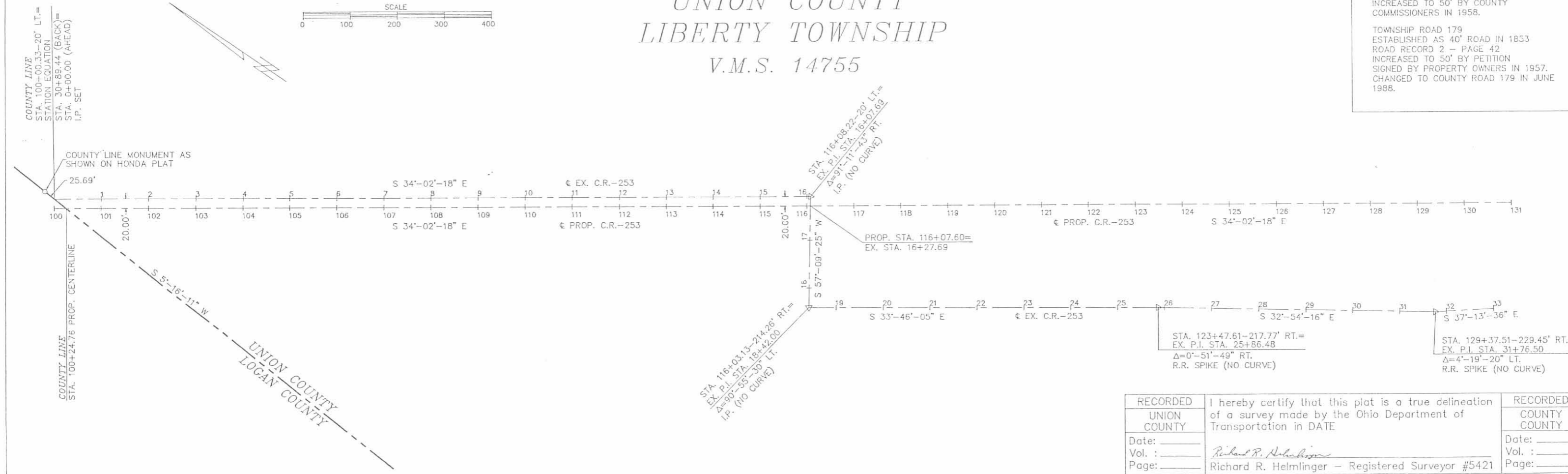
PROP. T.R.-143 CURVE DATA
 P.I. STA. 87+77.26
 $\Delta = 0^\circ-41'-58''$ LT.
 $D = 0'-15''$
 $R = 22918.31'$
 $T = 139.89'$
 $L = 279.78'$
 $E = 0.43'$

RIGHT OF WAY WIDTHS	
LOGAN COUNTY	TOWNSHIP ROAD 143 ESTABLISHED AS 36' ROAD IN 1868 ROAD RECORD 1 - PAGE 304
UNION COUNTY	COUNTY ROAD 229 ESTABLISHED AS 30' ROAD IN 1868 ROAD RECORD 2 - PAGE 146
	COUNTY ROAD 229 ESTABLISHED AS 40' ROAD IN 1882 ROAD RECORD 2 - PAGE 298 INCREASED TO 50' BY COUNTY COMMISSIONERS IN 1958.
	TOWNSHIP ROAD 179 ESTABLISHED AS 40' ROAD IN 1853 ROAD RECORD 2 - PAGE 42 INCREASED TO 50' BY PETITION SIGNED BY PROPERTY OWNERS IN 1957. CHANGED TO COUNTY ROAD 179 IN JUNE 1988.



UNION COUNTY LIBERTY TOWNSHIP

V.M.S. 14755



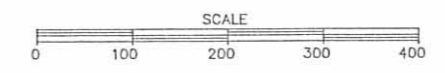
PROP. C.R.-253 CURVE DATA
 P.I. STA. 116+07.60
 $\Delta = 90^\circ-35'-30''$ LT.
 $D = 0'-15''$
 $R = 22918.31'$
 $T = 139.89'$
 $L = 279.78'$
 $E = 0.43'$

RECORDED UNION COUNTY	I hereby certify that this plat is a true delineation of a survey made by the Ohio Department of Transportation in DATE Richard R. Helminger - Registered Surveyor #5421	RECORDED COUNTY COUNTY
Date: _____		Date: _____
Vol. : _____		Vol. : _____
Page: _____		Page: _____

FHWA REGION	STATE	PROJECT	135
5	OHIO		149
			2
			16

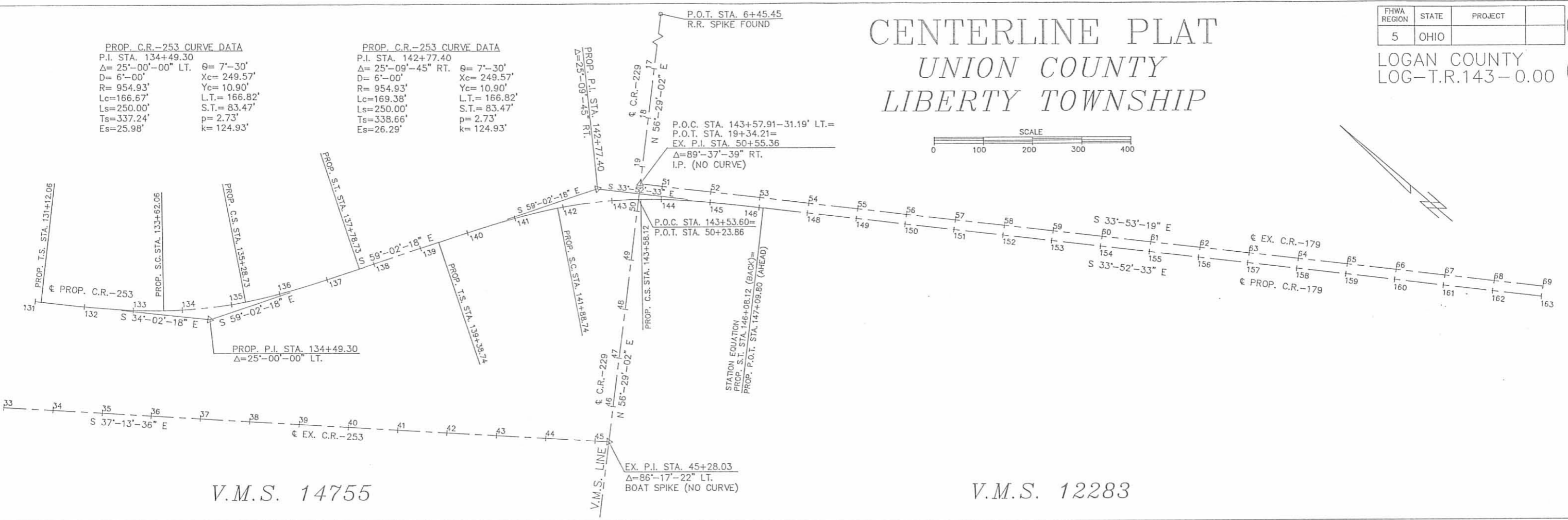
LOGAN COUNTY
LOG-T.R.143-0.00

CENTERLINE PLAT UNION COUNTY LIBERTY TOWNSHIP



PROP. C.R.-253 CURVE DATA
P.I. STA. 134+49.30
 $\Delta=25^{\circ}-00'-00''$ LT.
D=6'-00' $\Theta=7^{\circ}-30'$
R=954.93' $X_c=249.57'$
Lc=166.67' $Y_c=10.90'$
Ls=250.00' $L.T.=166.82'$
Ts=337.24' $S.T.=83.47'$
Es=25.98' $p=2.73'$
k=124.93'

PROP. C.R.-253 CURVE DATA
P.I. STA. 142+77.40
 $\Delta=25^{\circ}-09'-45''$ RT.
D=6'-00' $\Theta=7^{\circ}-30'$
R=954.93' $X_c=249.57'$
Lc=169.38' $Y_c=10.90'$
Ls=250.00' $L.T.=166.82'$
Ts=338.66' $S.T.=83.47'$
Es=26.29' $p=2.73'$
k=124.93'

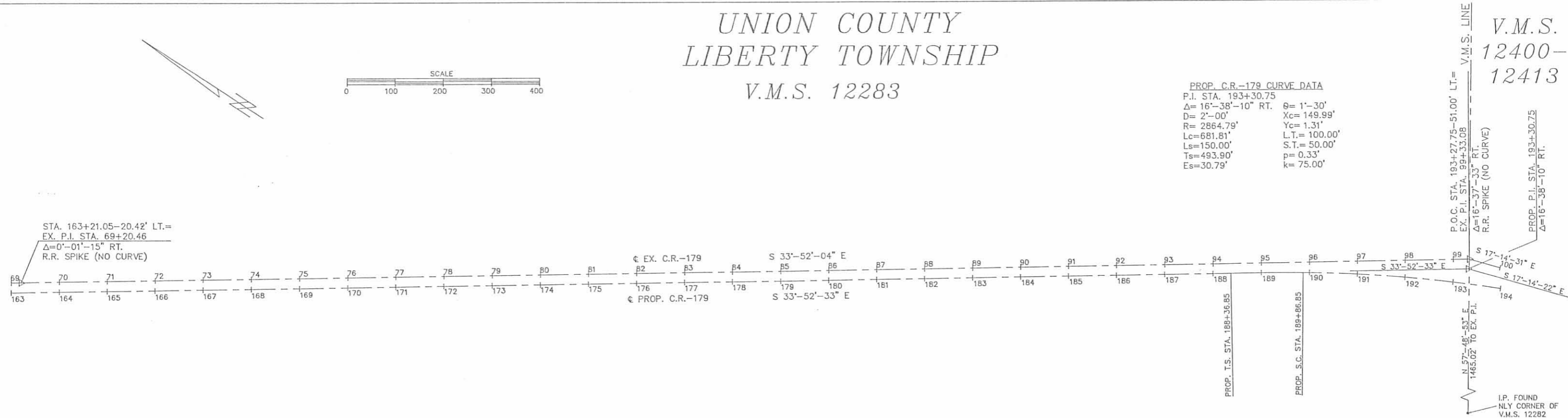


UNION COUNTY LIBERTY TOWNSHIP

V.M.S. 12283



PROP. C.R.-179 CURVE DATA
P.I. STA. 193+30.75
 $\Delta=16^{\circ}-38'-10''$ RT.
D=2'-00' $\Theta=1^{\circ}-30'$
R=2864.79' $X_c=149.99'$
Lc=681.81' $Y_c=1.31'$
Ls=150.00' $L.T.=100.00'$
Ts=493.90' $S.T.=50.00'$
Es=30.79' $p=0.33'$
k=75.00'



RECORDED UNION COUNTY	I hereby certify that this plat is a true delineation of a survey made by the Ohio Department of Transportation in DATE <i>Richard R. Helmlinger</i> Richard R. Helmlinger - Registered Surveyor #5421	RECORDED COUNTY COUNTY
Date: _____		Date: _____
Vol. : _____		Vol. : _____
Page: _____		Page: _____

CENTERLINE PLAT

UNION COUNTY

LIBERTY TOWNSHIP

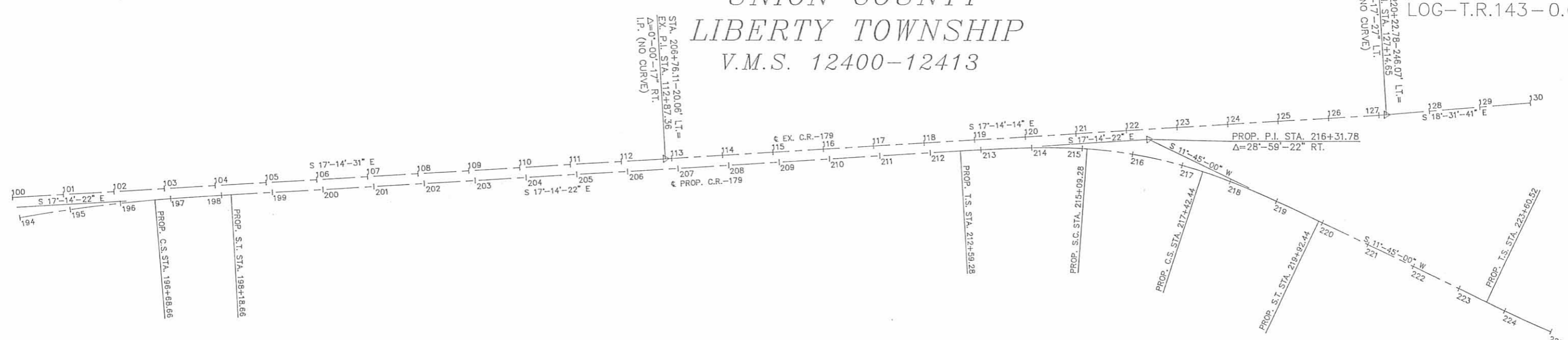
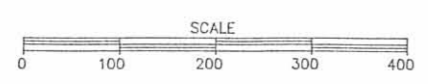
V.M.S. 12400-12413

FHWA REGION	STATE	PROJECT	
5	OHIO		

LOGAN COUNTY
LOG-T.R.143-0.00

136
149

3
16



PROP. C.R.-179 CURVE DATA

P.I. STA. 193+30.75	Δ = 16°-38'-10" RT.	Q = 1'-30'	Xc = 149.99'
D = 2'-00'	R = 2864.79'	Yc = 1.31'	Lc = 681.81'
Ls = 150.00'	Ts = 493.90'	p = 0.33'	k = 75.00'
Es = 30.79'			

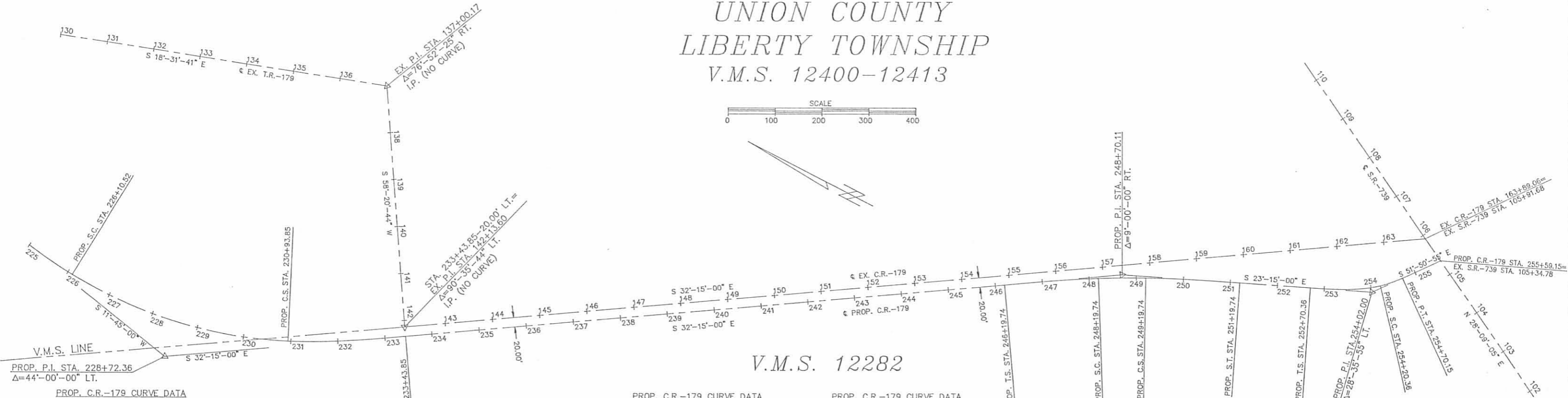
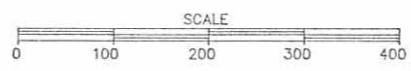
PROP. C.R.-179 CURVE DATA

P.I. STA. 216+31.78	Δ = 28°-59'-22" RT.	Q = 7'-30'	Xc = 249.57'
D = 6'-00'	R = 954.93'	Yc = 10.90'	Lc = 233.16'
Ls = 250.00'	Ts = 372.50'	p = 2.73'	k = 124.93'
Es = 34.21'			

UNION COUNTY

LIBERTY TOWNSHIP

V.M.S. 12400-12413



PROP. C.R.-179 CURVE DATA

P.I. STA. 228+72.36	Δ = 44°-00'-00" LT.	Q = 7'-30'	Xc = 249.57'
D = 6'-00'	R = 954.93'	Yc = 10.90'	Lc = 483.33'
Ls = 250.00'	Ts = 511.85'	p = 2.73'	k = 124.93'
Es = 77.94'			

PROP. C.R.-179 CURVE DATA

P.I. STA. 248+70.11	Δ = 9°-00'-00" RT.	Q = 3'-00'	Xc = 199.95'
D = 3'-00'	R = 1909.86'	Yc = 3.48'	Lc = 100.00'
Ls = 200.00'	Ts = 250.37'	p = 0.87'	k = 99.99'
Es = 6.78'			

PROP. C.R.-179 CURVE DATA

P.I. STA. 254+02.00	Δ = 28°-35'-55" LT.	Q = 17'-11'-19"	Xc = 148.66'
D = 22'-55'-06"	R = 250.00'	Yc = 14.90'	Lc = 49.79'
Ls = 150.00' (BACK)	Ts = 131.64' (BACK)	p = 3.74'	k = 74.78'
Es = 10.00'			

RECORDED	I hereby certify that this plat is a true delineation of a survey made by the Ohio Department of Transportation in DATE <i>Richard R. Helmlinger</i> Richard R. Helmlinger - Registered Surveyor #5421	RECORDED
UNION COUNTY		COUNTY
Date: _____		Date: _____
Page: _____		Page: _____

CENTERLINE PLAT LOGAN & UNION COUNTIES PERRY & LIBERTY TOWNSHIPS

FHWA REGION	STATE	PROJECT	137 149
5	OHIO		

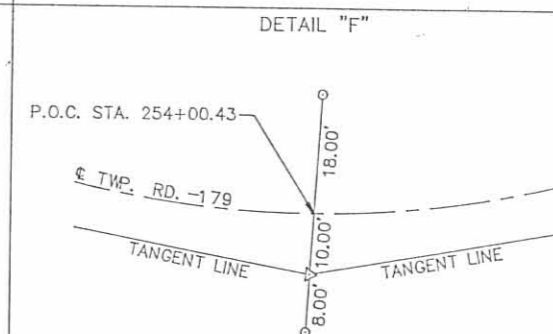
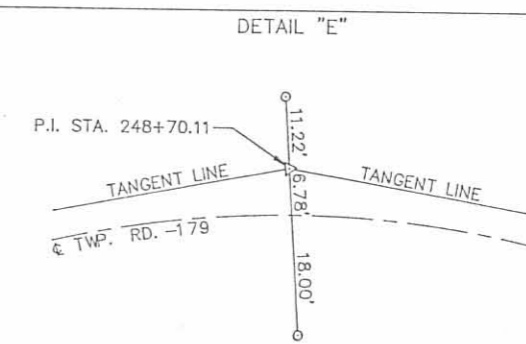
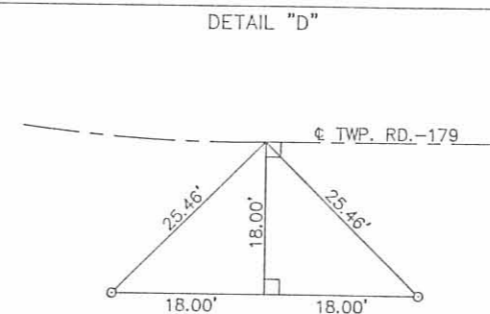
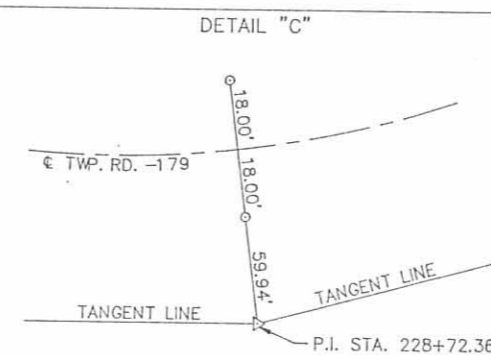
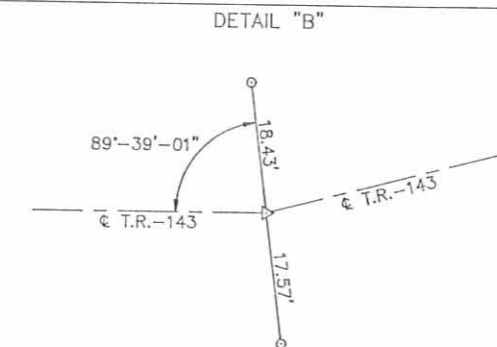
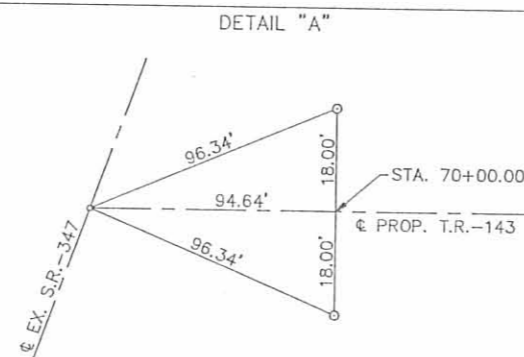
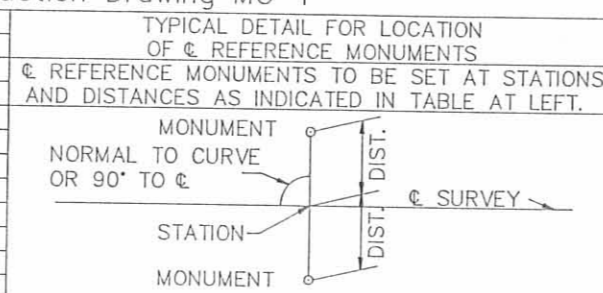
LOGAN COUNTY
LOG-T.R.143-0.00

4
16

THE SETTING OF MONUMENTS SHALL BE PERFORMED UNDER THE DIRECT SUPERVISION OF A REGISTERED PROFESSIONAL SURVEYOR. ALL MONUMENTS WHICH ARE SET, WHICH DIFFER FROM THOSE SHOWN ON THE CENTERLINE SURVEY PLAT, SHALL BE RECORDED BY FILING AN AMENDED PLAT OR BY AN AFFIDAVIT LISTING THE CHANGES.

☉ REFERENCE MONUMENTS TO BE SET BY CONTRACTOR See Standard Construction Drawing MC-1		
☉ REFERENCE MONUMENTS		
STATION	LEFT	RIGHT
☉ LOGAN CO. TWP. RD. 143		
P.O.T. STA. 69+05.36	SEE DETAIL "A"	
P.O.T. STA. 75+00.00	18.00'	18.00'
P.O.T. STA. 80+00.00	18.00'	18.00'
P.I. STA. 87+77.26	SEE DETAIL "B"	
P.O.T. STA. 95+00.00	18.00'	18.00'
P.O.T. STA. 100+00.00	18.00'	18.00'
☉ UNION CO. RD. 253		
P.O.T. STA. 105+00.00	18.00'	18.00'
P.O.T. STA. 110+00.00	18.00'	18.00'
P.O.T. STA. 115+00.00	18.00'	18.00'
P.O.T. STA. 120+00.00	18.00'	18.00'
P.O.T. STA. 125+10.00	18.00'	18.00'
T.S. STA. 131+12.06	18.00'	18.00'
P.I. STA. 134+49.30	SET ON P.I.	
T.S. STA. 139+38.74	18.00'	18.00'
P.I. STA. 142+77.40	SET ON P.I.	
☉ UNION CO. TWP. RD. 179		
S.T. STA. 146+08.12	18.00'	18.00'
P.O.T. STA. 155+50.00	18.00'	18.00'
P.O.T. STA. 160+00.00	18.00'	18.00'
P.O.T. STA. 165+00.00	18.00'	18.00'
P.O.T. STA. 170+00.00	18.00'	18.00'
P.O.T. STA. 175+00.00	18.00'	18.00'
P.O.T. STA. 180+00.00	18.00'	18.00'
T.S. STA. 188+36.85	18.00'	18.00'
P.I. STA. 193+30.75 (IN DITCH)	SET ON P.I.	
S.T. STA. 198+18.66	18.00'	18.00'
P.O.T. STA. 205+00.00	18.00'	18.00'
T.S. STA. 212+59.28	18.00'	18.00'
P.I. STA. 216+31.78 (IN DITCH)	SET ON P.I.	
S.T. STA. 219+92.44	18.00'	18.00'
T.S. STA. 223+60.52	18.00'	18.00'
M.P. STA. 228+52.18	SEE DETAIL "C"	
S.T. STA. 233+43.85	SEE DETAIL "D"	
P.O.T. STA. 240+00.00	18.00'	18.00'
T.S. STA. 246+19.74	18.00'	18.00'
M.P. STA. 248+69.74	SEE DETAIL "E"	
S.T. STA. 251+19.74	18.00'	18.00'
T.S. STA. 252+70.36	18.00'	18.00'
P.I. STA. 254+02.00	SEE DETAIL "F"	
P.T. STA. 254+70.15	18.00'	18.00'

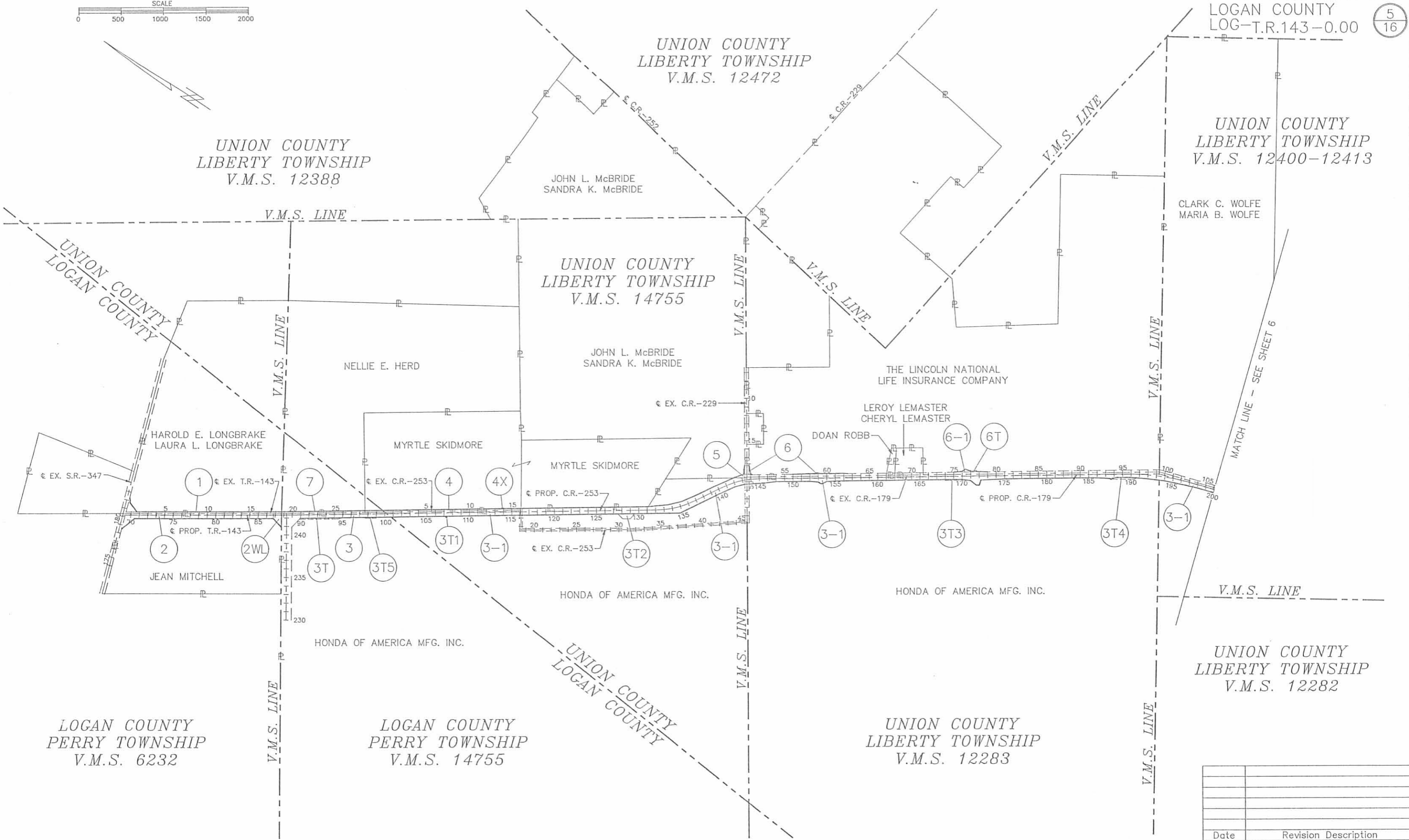
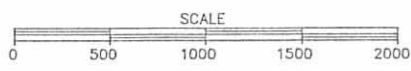
TOTAL OF 74 MONUMENTS TO BE SET.



RECORDED UNION COUNTY	I hereby certify that this plat is a true delineation of a survey made by the Ohio Department of Transportation in DATE <i>Richard R. Helmlinger</i> Richard R. Helmlinger - Registered Surveyor #5421	RECORDED COUNTY COUNTY
Date: _____		Date: _____
Vol. : _____		Vol. : _____
Page: _____		Page: _____

PROPERTY MAP

FHWA REGION	STATE	PROJECT	138 149
5	OHIO		5 16



Date	Revision Description
Completion Date: 12-9-88	

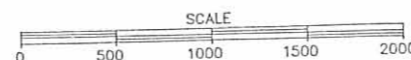
FHWA REGION	STATE	PROJECT	
5	OHIO		

139
149

LOGAN COUNTY
LOG-T.R.143-0.00

6
16

PROPERTY MAP



UNDERGROUND UTILITIES

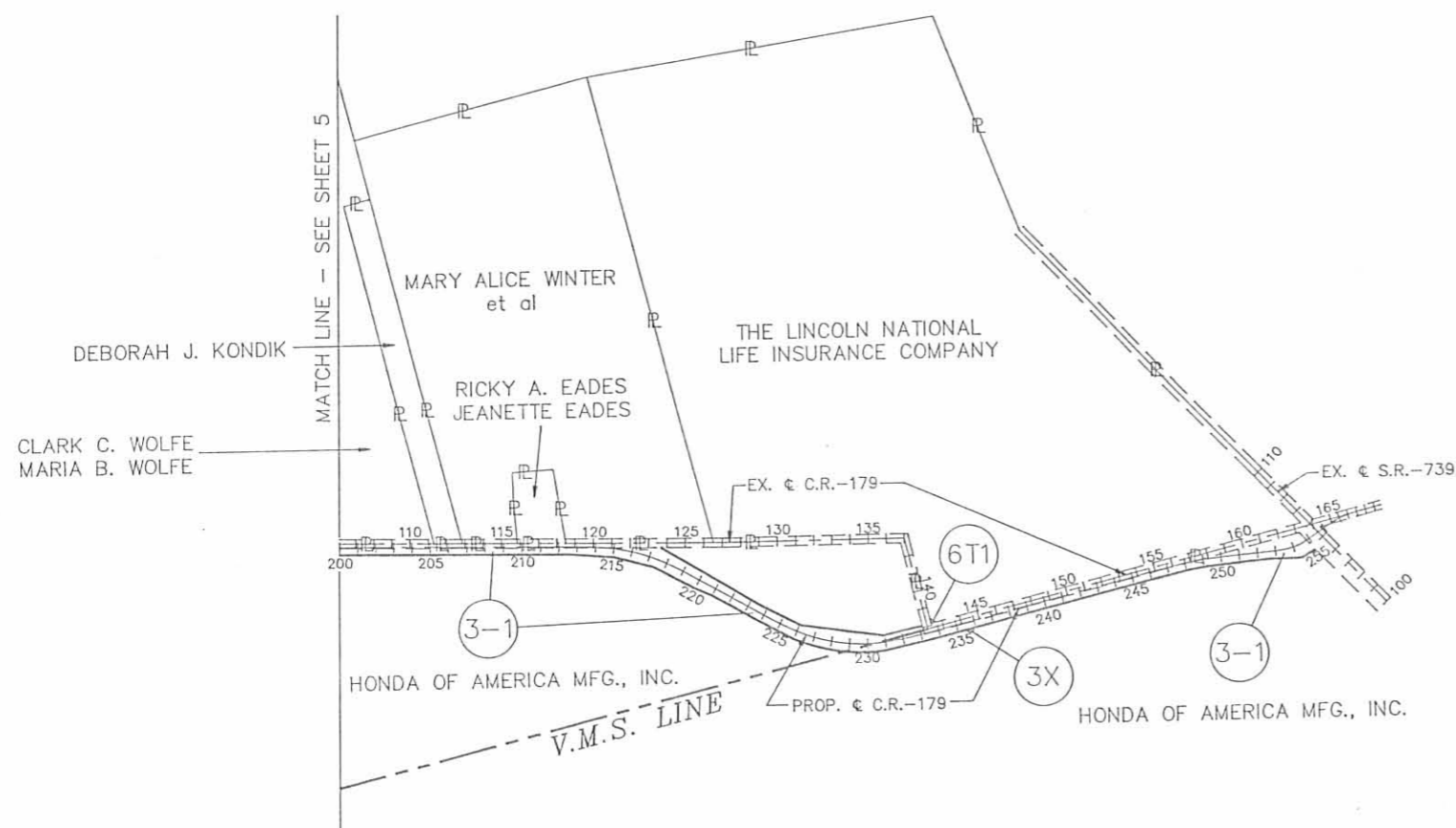
THE LOCATIONS OF THE UNDERGROUND UTILITIES SHOWN ON THE PLANS ARE AS OBTAINED FROM THE OWNERS OF THE UTILITY AS REQUIRED BY SECTION 153.64 O.R.C.

UTILITY OWNERSHIP

THE FOLLOWING UTILITIES AND OWNERS ARE LOCATED WITHIN THE WORK LIMITS OF THIS PROJECT:

- | | |
|-----------|--|
| ELECTRIC | <p>DAYTON POWER & LIGHT
U.S. 68 NORTH
BELLEFONTAINE, OHIO 43311
(513) 593-1070
JOE THOMPSON</p> <p>LOGAN COUNTY RURAL ELECTRIC
1587 CO. RD. 32, NORTH
BELLEFONTAINE, OHIO 43311
LARRY HEADLEY</p> <p>UNION RURAL ELECTRIC COOPERATIVE INC.
15461 STATE ROUTE 36
P.O. BOX 393
MARYSVILLE, OHIO 43040
(513) 642-1826
(513) 642-1947
GEORGE MANNING</p> |
| TELEPHONE | <p>UNITED TELEPHONE
127 N. MAIN
BELLEFONTAINE, OHIO 43311
(513) 599-9276
LINDA PINKERTON</p> |
| GAS | <p>SHELL OIL CO.
1500 W. BUCKEYE ST.
LIMA, OHIO 45804
(419) 224-2811
MYRON MORELAND</p> |

UNION COUNTY
LIBERTY TOWNSHIP
V.M.S. 12400-12413



UNION COUNTY
LIBERTY TOWNSHIP
V.M.S. 12282

Date	Revision Description
Completion Date: 12-9-88	

TOTAL NUMBER OF :
 7 OWNERSHIPS
 0 TOTAL TAKES
 0 OWNERSHIPS WITH STRUCTURES INVOLVED
 0 OWNERSHIPS WITH "P" ITEMS

SUMMARY OF ADDITIONAL RIGHT-OF-WAY

JOB NO. 07770(0)
 P.F. NO. 1352

FHWA REGION	STATE	PROJECT	140 149
5	OHIO		7 16

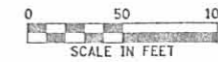
LOGAN COUNTY
 LOG-T.R.143-0.00

PARCEL	OWNER	SHEET NO.	OWNER'S RECORD		RECORD AREA	TOTAL P.R.O.	GROSS TAKE	P.R.O. IN TAKE	NET TAKE	STRUCTURE	NET RESIDUE		TYPE FUND	REMARKS & PERSONALTY	AS ACQUIRED		
			BOOK	PAGE							LEFT	RIGHT			DATE	BOOK	PAGE
1	HAROLD E. & LAURA L. LONGBRAKE (H&W)	8	407	741	110.09	2.914	1.173	0.891	0.282		106.89		STATE				
2WL	JEAN MITCHELL	8	360	848	43	1.434	0.248	0.040	0.208			39.50	STATE				
2	JEAN MITCHELL	8					2.709	0.847	1.862				STATE				
3	HONDA OF AMERICA MFG., INC.	8 & 9	56	241	4273.520		1.434	0.419	1.015				STATE				
3-1	HONDA OF AMERICA MFG., INC.	9 TO 16	305	656	3192.022		26.002	6.085	19.917				STATE				
3X	HONDA OF AMERICA MFG., INC.	15					0.014	0.000	0.014				STATE				
3T	HONDA OF AMERICA MFG., INC.	8	306	760	8.469		0.170	0.000	0.170				STATE	CONNECT TILE, GRADE & SEED.			
3T1	HONDA OF AMERICA MFG., INC.	9					0.007	0.000	0.007				STATE	CONNECT TILE, GRADE & SEED.			
3T2	HONDA OF AMERICA MFG., INC.	9					0.200	0.000	0.200				STATE	CONSTRUCT DRIVE, GRADE & SEED.			
3T3	HONDA OF AMERICA MFG., INC.	11					0.054	0.000	0.054				STATE	CONNECT TILE, GRADE & SEED.			
3T4	HONDA OF AMERICA MFG., INC.	12					0.122	0.000	0.122				STATE	CONNECT TILE, GRADE & SEED.			
3T5	HONDA OF AMERICA MFG., INC.	8					0.030	0.000	0.030				STATE	CONNECT TILE, GRADE & SEED.			
4	MYRTLE SKIDMORE	8 & 9	200	111	90.28	0.648	0.845	0.648	0.197		89.44		STATE	RECORD AREA IS FROM TAX MAP.			
4X	MYRTLE SKIDMORE	9	200	115			0.006	0.000	0.006				STATE				
			203	181													
5	JOHN L. & SANDRA K. McBRIDE	10	304	377	247.15	2.93	0.167	0.082	0.085		244.14		STATE				
6	THE LINCOLN NATIONAL LIFE INSURANCE COMPANY	10 & 11	296	453	491.03	8.19	0.845	0.748	0.097		482.66		STATE	RECORD AREA FROM DEED PARCELS 3,4,5 & 7 ONLY.			
6-1	THE LINCOLN NATIONAL LIFE INSURANCE COMPANY	11					0.314	0.230	0.084				STATE				
6T	THE LINCOLN NATIONAL LIFE INSURANCE COMPANY	11					0.024	0.000	0.024				STATE	CONNECT TILE, GRADE & SEED.			
6T1	THE LINCOLN NATIONAL LIFE INSURANCE COMPANY	14					0.011	0.000	0.011				STATE	PAVEMENT REMOVAL.			
7	NELLIE E. HERD	8	308	501	108.09	0.409	0.456	0.409	0.047		107.63		STATE				

Date: _____ Revision Description: _____
 Completion Date: 12-9-88

A: L143SUM

LOGAN COUNTY
PERRY TOWNSHIP
V.M.S. 6232



FHWA REGION	STATE	PROJECT
5	OHIO	

141
149

LOGAN COUNTY
LOG-T.R.143-0.00

8
16

NO.	BEARING	DIST.
1	S 18°-30'-47" E	30.00'
2	S 44°-55'-19" W	33.54'
3	S 71°-29'-13" W	20.00'

NET 0.282 AC.
P.R.O. 0.891 AC.
TOTAL 1.173 AC.

HAROLD E. LONGBRAKE
LAURA L. LONGBRAKE
H & W

NET 1.862 AC.
P.R.O. 0.847 AC.
TOTAL 2.709 AC.

JEAN MITCHELL

V.M.S. 6232

LOGAN COUNTY
PERRY TOWNSHIP
V.M.S. 14755

V.M.S. 14755

MYRTLE SKIDMORE

HAROLD E. LONGBRAKE
LAURA L. LONGBRAKE
H & W

NET 0.282 AC.
P.R.O. 0.891 AC.
TOTAL 1.173 AC.

PROP. T.R.-143 CURVE DATA
P.I. STA. 87+77.26
 $\Delta = 0^\circ-41'-58" \text{ LT.}$
 $D = 0'15"$
 $R = 22918.31'$
 $T = 139.89'$
 $L = 279.78'$
 $E = 0.43'$

NELLIE E. HERD

NET 0.047 AC.
P.R.O. 0.409 AC.
TOTAL 0.456 AC.

NET 0.197 AC.
P.R.O. 0.648 AC.
TOTAL 0.845 AC.

NET 1.862 AC.
P.R.O. 0.847 AC.
TOTAL 2.709 AC.

0.170 AC.

NET 1.015 AC.
P.R.O. 0.419 AC.
TOTAL 1.434 AC.

0.030 AC.

JEAN MITCHELL

NET 0.208 AC.
P.R.O. 0.040 AC.
TOTAL 0.248 AC.

HONDA OF AMERICA MFG., INC.

NO.	BEARING	DIST.
4	S 50°-35'-00" W	20.87'
5	S 56°-39'-00" W	60.00'
6	S 05°-16'-11" W	94.71'
7	N 55°-57'-42" E	60.00'
8	N 56°-05'-58" E	20.00'
9	S 34°-02'-18" E	1632.54'
10	N 47°-01'-59" W	66.71'
11	S 78°-56'-54" E	20.89'
12	S 55°-57'-42" W	10.00'
13	N 55°-57'-42" E	10.00'

Date	Revision Description
Completion Date: 12/09/88	

LOG-T.R.-143 R/W PLAN

UNION COUNTY
LIBERTY TOWNSHIP
V.M.S. 14755

FHWA REGION	STATE	PROJECT
5	OHIO	

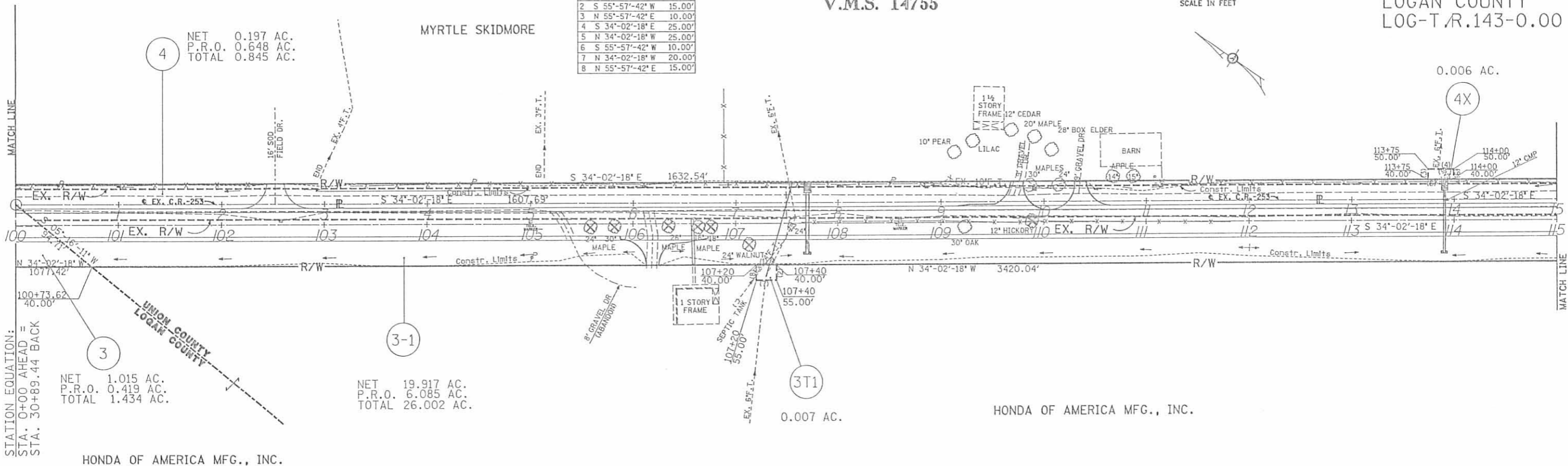
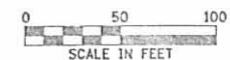
142
149

LOGAN COUNTY
LOG-T.R.143-0.00

9
16

TANGENT TABLE

NO.	BEARING	DIST.
1	S 34°-02'-18" E	20.00'
2	S 55°-57'-42" W	15.00'
3	N 55°-57'-42" E	10.00'
4	S 34°-02'-18" E	25.00'
5	N 34°-02'-18" W	25.00'
6	S 55°-57'-42" W	10.00'
7	N 34°-02'-18" W	20.00'
8	N 55°-57'-42" E	15.00'



STATION EQUATION:
STA. 0+00 AHEAD =
STA. 30+89.44 BACK

NET 1.015 AC.
P.R.O. 0.419 AC.
TOTAL 1.434 AC.

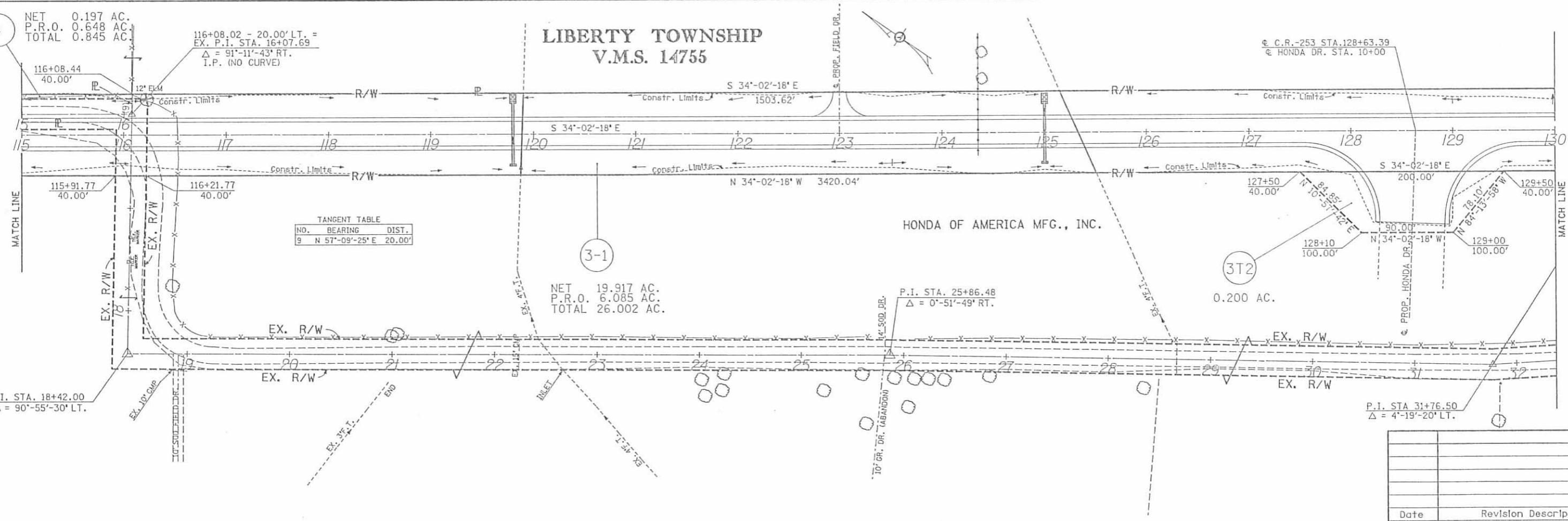
NET 0.197 AC.
P.R.O. 0.648 AC.
TOTAL 0.845 AC.

NET 19.917 AC.
P.R.O. 6.085 AC.
TOTAL 26.002 AC.

0.007 AC.

0.006 AC.

LIBERTY TOWNSHIP
V.M.S. 14755



P.I. STA. 18+42.00
 $\Delta = 90^\circ-55'-30''$ LT.

116+08.02 - 20.00' LT. =
EX. P.I. STA. 36+07.69
 $\Delta = 91^\circ-11'-43''$ RT.
I.P. (NO CURVE)

TANGENT TABLE

NO.	BEARING	DIST.
9	N 57°-09'-25" E	20.00'

NET 19.917 AC.
P.R.O. 6.085 AC.
TOTAL 26.002 AC.

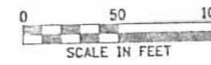
0.200 AC.

P.I. STA. 25+86.48
 $\Delta = 0^\circ-51'-49''$ RT.

P.I. STA. 31+76.50
 $\Delta = 4^\circ-19'-20''$ LT.

Date	Revision	Description
Completion Date : 12/09/88		

UNION COUNTY
LIBERTY TOWNSHIP
V.M.S. 14755



FHWA REGION	STATE	PROJECT
5	OHIO	

143
149

LOGAN COUNTY
LOG-T.R.143-0.00

10
16

PROP. C.R.-253 CURVE DATA
P.I. STA. 134+49.30
 $\Delta = 25^{\circ}-00'-00''$ LT.
D = 6'-00'
R = 954.93'
Lc = 166.67'
Ls = 250.00'
Ts = 337.24'
Es = 25.98'

$\theta = 7^{\circ}-30'$
Xc = 249.57'
Yc = 10.90'
L.T. = 166.82'
S.T. = 83.47'
p = 2.73'
k = 124.93'

PROP. C.R.-253 CURVE DATA
P.I. STA. 142+77.40
 $\Delta = 25^{\circ}-09'-45''$ RT.
D = 6'-00'
R = 954.93'
Lc = 169.38'
Ls = 250.00'
Ts = 338.66'
Es = 26.29'

$\theta = 7^{\circ}-30'$
Xc = 249.57'
Yc = 10.90'
L.T. = 166.82'
S.T. = 83.47'
p = 2.73'
k = 124.93'

JOHN L. McBRIDE
SANDRA K. McBRIDE

NET 0.085 AC.
P.R.O. 0.082 AC.
TOTAL 0.167 AC.

THE LINCOLN NATIONAL LIFE
INSURANCE COMPANY

P.O.C. STA. 143+57.91 - 31.19' LT. =
EX. P.I. STA. 50+55.36
 $\Delta = 89^{\circ}-37'-38''$ RT.
I.P. SET (NO CURVE)

NET 0.097 AC.
P.R.O. 0.748 AC.
TOTAL 0.845 AC.

TANGENT TABLE

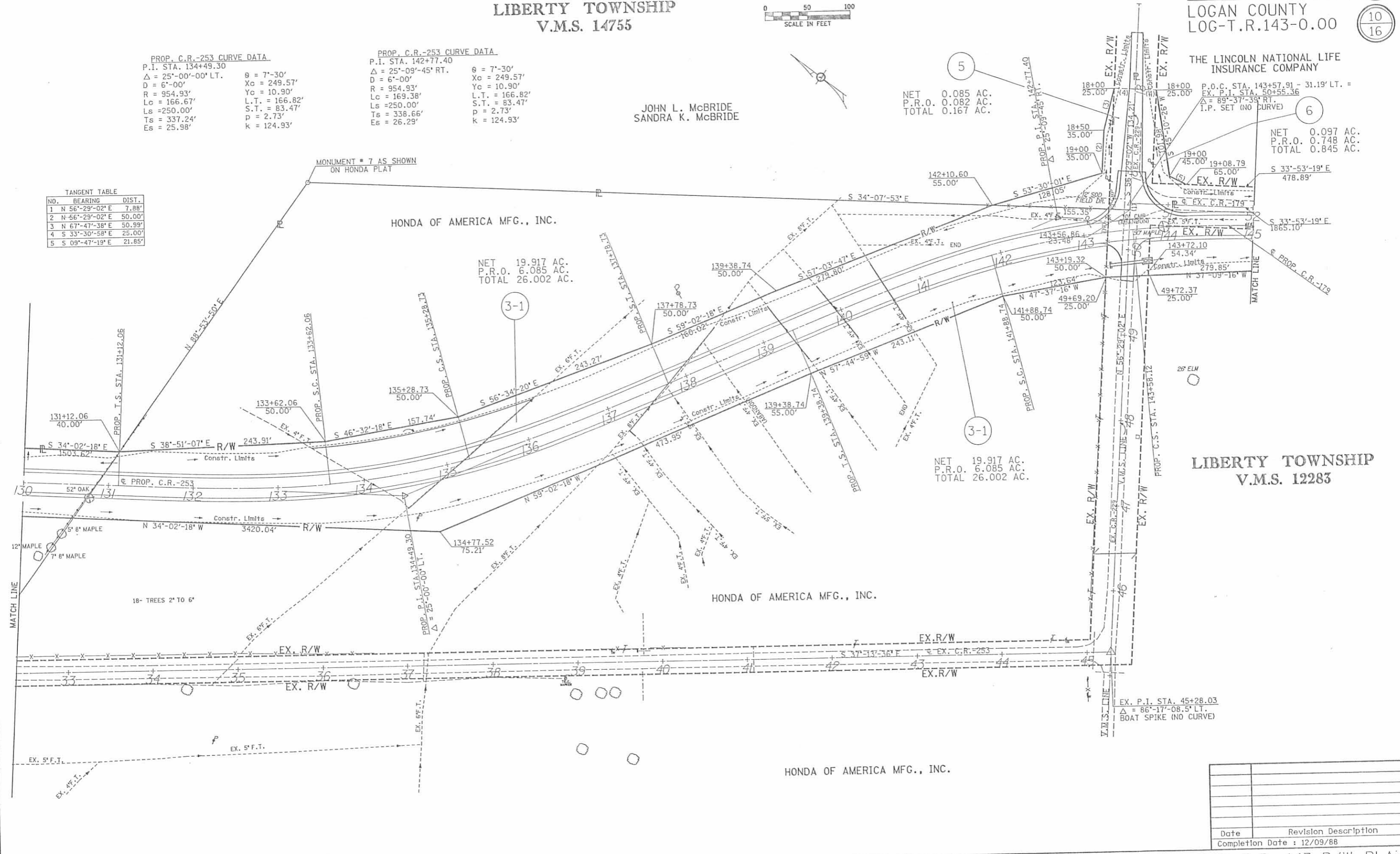
NO.	BEARING	DIST.
1	N 56°-29'-02" E	7.88'
2	N 56°-29'-02" E	50.00'
3	N 67°-47'-38" E	50.99'
4	S 33°-30'-58" E	25.00'
5	S 09°-47'-19" E	21.85'

MONUMENT # 7 AS SHOWN
ON HONDA PLAT

HONDA OF AMERICA MFG., INC.

NET 19.917 AC.
P.R.O. 6.085 AC.
TOTAL 26.002 AC.

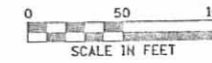
LIBERTY TOWNSHIP
V.M.S. 12283



Date	Revision	Description

Completion Date : 12/09/88
LOG-T.R.-143 R/W PLAT

UNION COUNTY
LIBERTY TOWNSHIP
V.M.S. 12283



FHWA REGION	STATE	PROJECT
5	OHIO	

144
149

LOGAN COUNTY
LOG-T.R.143-0.00

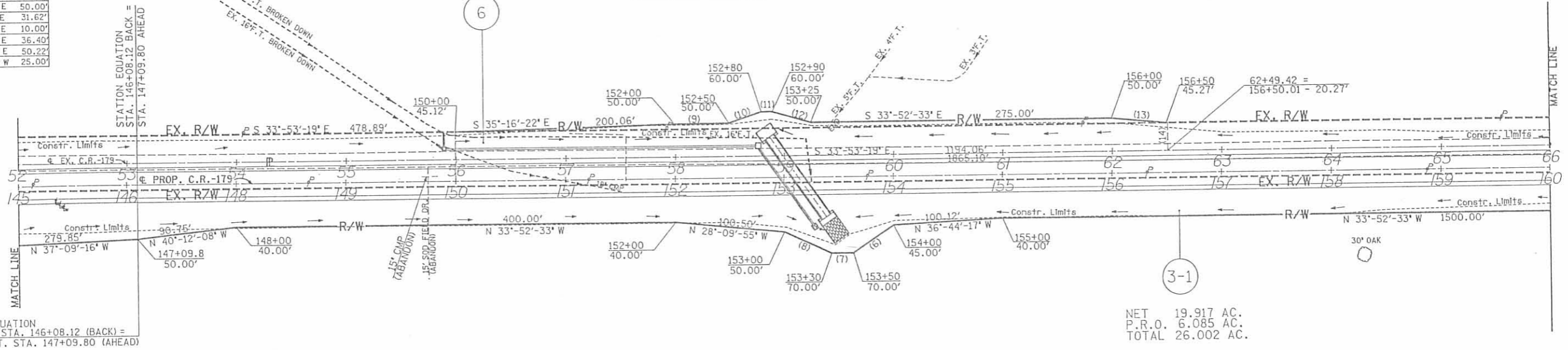
11
16

TANGENT TABLE

NO.	BEARING	DIST.
6	N 60°-26'-27" W	55.90'
7	N 33°-52'-33" W	20.00'
8	N 00°-11'-08" W	36.06'
9	S 33°-52'-33" E	50.00'
10	S 52°-18'-38" E	31.62'
11	S 33°-52'-33" E	10.00'
12	S 17°-55'-49" E	36.40'
13	S 28°-28'-10" E	50.22'
14	S 56°-06'-41" W	25.00'

NET 0.097 AC.
P.R.O. 0.748 AC.
TOTAL 0.845 AC.

THE LINCOLN NATIONAL LIFE
INSURANCE COMPANY



STATION EQUATION
PROP. S.T. STA. 146+08.12 (BACK) =
PROP. P.O.T. STA. 147+09.80 (AHEAD)

NET 19.917 AC.
P.R.O. 6.085 AC.
TOTAL 26.002 AC.

HONDA OF AMERICA MFG., INC.

THE LINCOLN NATIONAL LIFE
INSURANCE COMPANY

DOAN
ROBB

LEROY LEMASTER
CHERYL LEMASTER

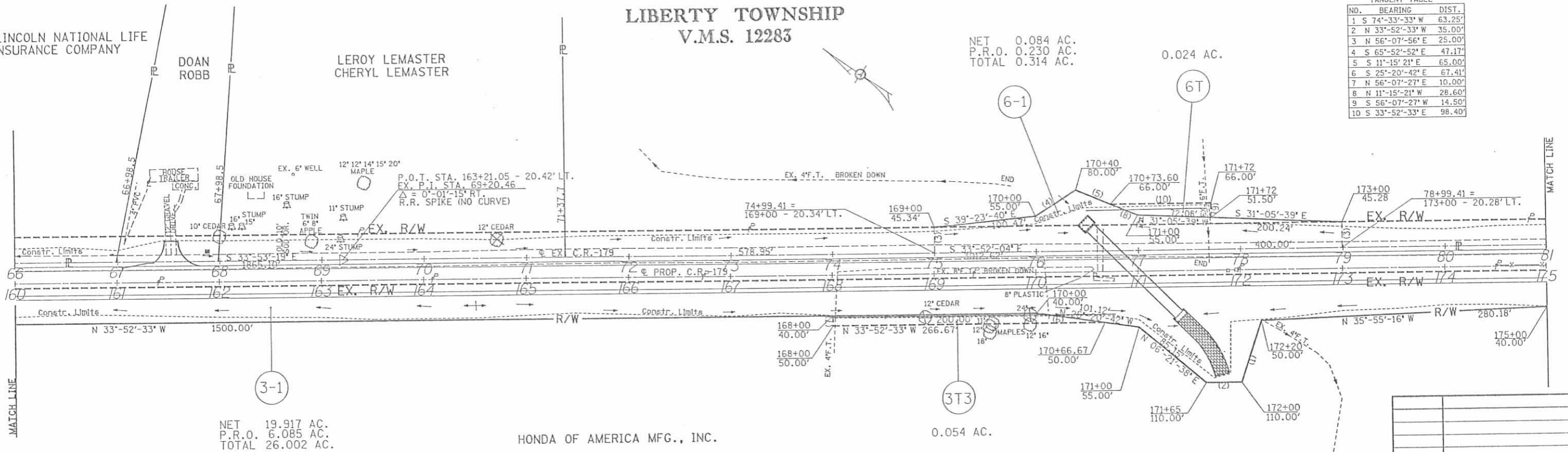
LIBERTY TOWNSHIP
V.M.S. 12283

NET 0.084 AC.
P.R.O. 0.230 AC.
TOTAL 0.314 AC.

0.024 AC.

TANGENT TABLE

NO.	BEARING	DIST.
1	S 74°-33'-33" W	63.25'
2	N 33°-52'-33" W	35.00'
3	N 56°-07'-56" E	25.00'
4	S 65°-52'-52" E	47.17'
5	S 11°-15'-21" E	65.00'
6	S 25°-20'-42" E	67.41'
7	N 56°-07'-27" E	10.00'
8	N 11°-15'-21" W	28.60'
9	S 56°-07'-27" W	14.50'
10	S 33°-52'-33" E	98.40'



NET 19.917 AC.
P.R.O. 6.085 AC.
TOTAL 26.002 AC.

HONDA OF AMERICA MFG., INC.

0.054 AC.

Date	Revision	Description
Completion Date : 12/09/88		

LOG-T.R.-143 R/W PLAN

UNION COUNTY
LIBERTY TOWNSHIP
V.M.S. 12283

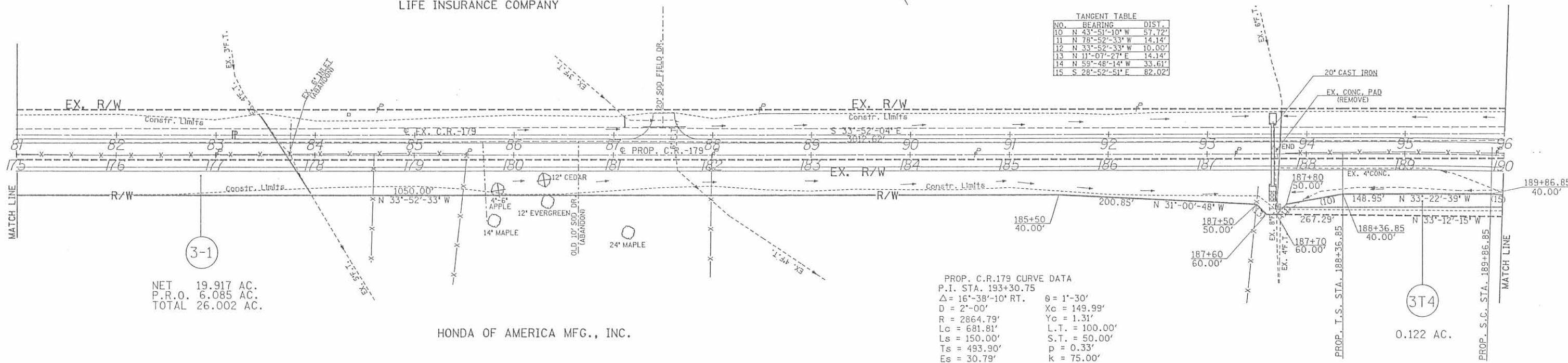
FHWA REGION	STATE	PROJECT
5	OHIO	

145
149

LOGAN COUNTY
LOG-T.R.143-0.00

12
16

THE LINCOLN NATIONAL
LIFE INSURANCE COMPANY



NET 19.917 AC.
P.R.O. 6.085 AC.
TOTAL 26.002 AC.

PROP. C.R.179 CURVE DATA
P.I. STA. 193+30.75
 $\Delta = 16^\circ-38'-10''$ RT.
D = 2'-00'
R = 2864.79'
Lc = 681.81'
Ls = 150.00'
Ts = 493.90'
Es = 30.79'

$\theta = 1^\circ-30'$
Xc = 149.99'
Yc = 1.31'
L.T. = 100.00'
S.T. = 50.00'
p = 0.33'
k = 75.00'

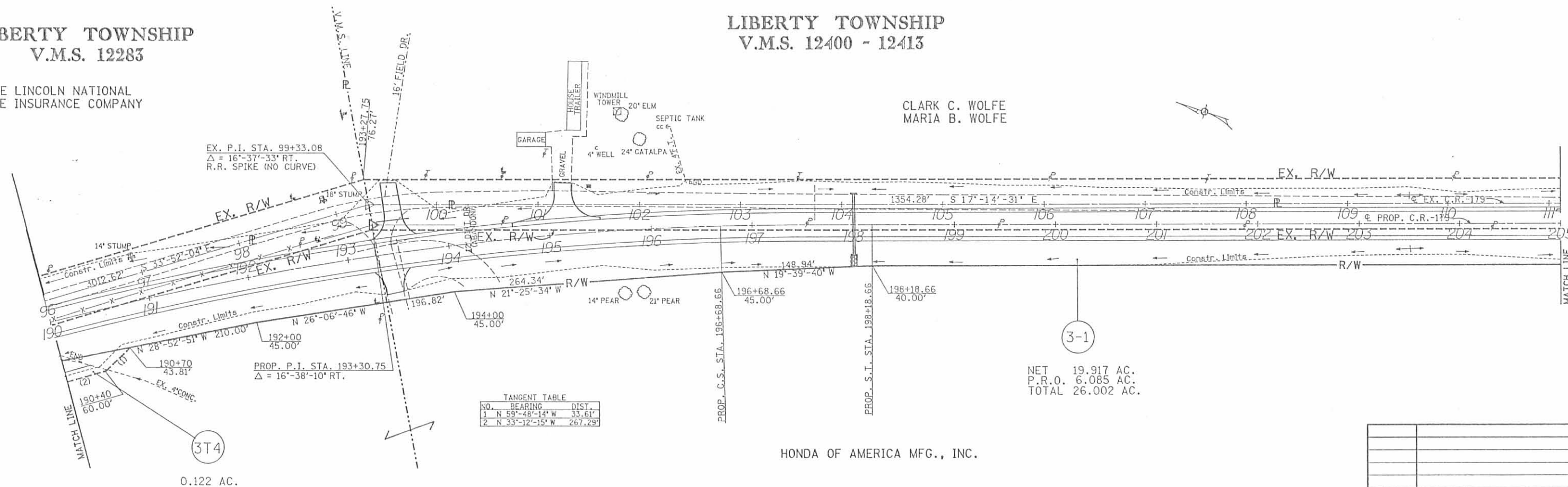
HONDA OF AMERICA MFG., INC.

LIBERTY TOWNSHIP
V.M.S. 12283

LIBERTY TOWNSHIP
V.M.S. 12400 - 12413

THE LINCOLN NATIONAL
LIFE INSURANCE COMPANY

CLARK C. WOLFE
MARIA B. WOLFE



PROP. P.I. STA. 193+30.75
 $\Delta = 16^\circ-38'-10''$ RT.

NO.	BEARING	DIST.
1	N 59°-48'-14" W	33.61'
2	N 33°-12'-15" W	267.28'

NET 19.917 AC.
P.R.O. 6.085 AC.
TOTAL 26.002 AC.

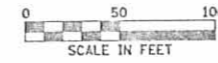
HONDA OF AMERICA MFG., INC.

0.122 AC.

Date	Revision	Description
Completion Date	12/09/88	

LOG-T.R.-143 R/W PLAN

UNION COUNTY
LIBERTY TOWNSHIP
V.M.S. 12400 - 12413

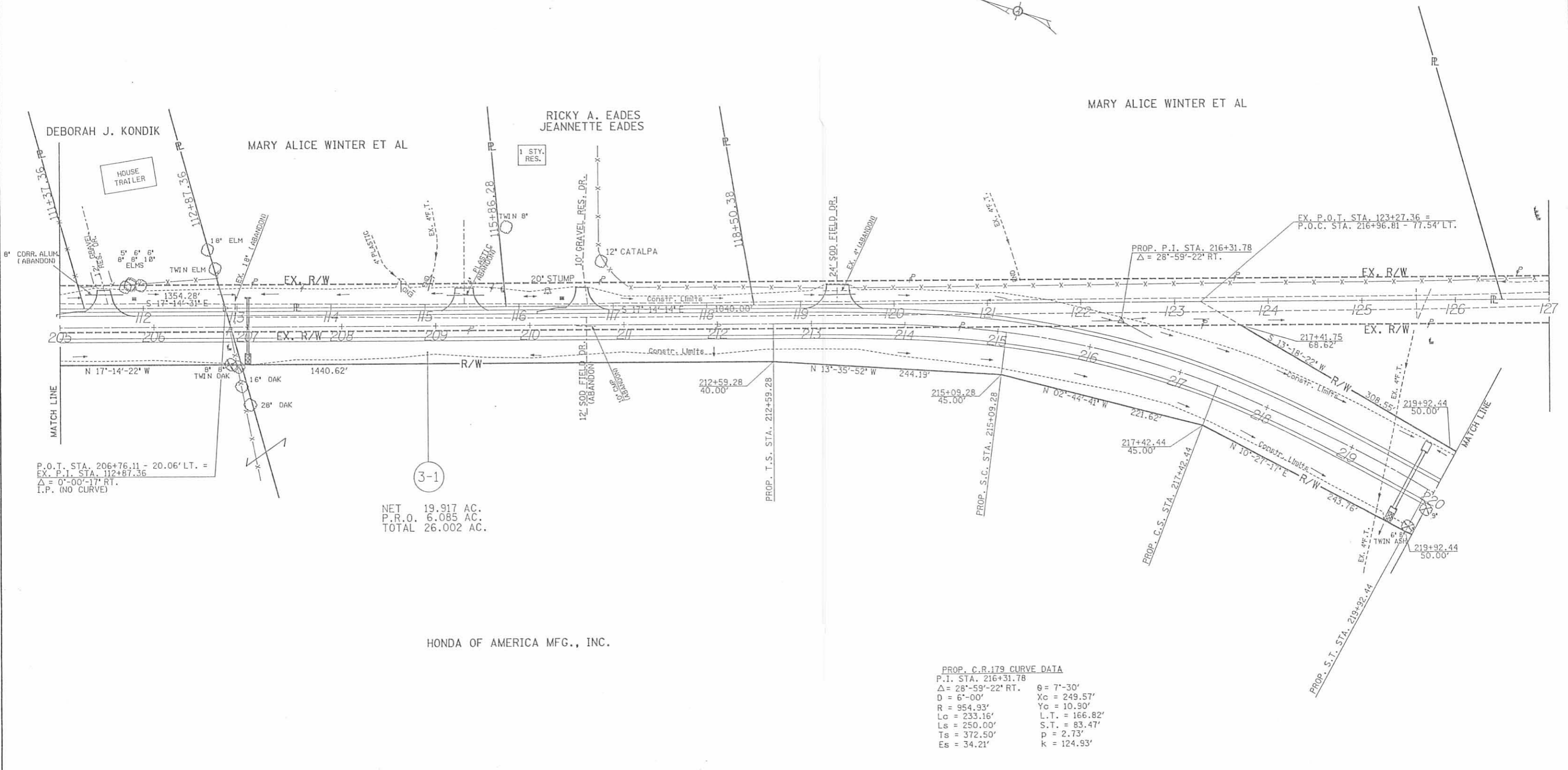


FHWA REGION	STATE	PROJECT
5	OHIO	

146
149

LOGAN COUNTY
LOG-T.R.143-0.00

13
16



P.O.T. STA. 206+76.11 - 20.06' LT. =
EX. P.I. STA. 112+87.36
Δ = 0°-00'-17" RT.
I.P. (NO CURVE)

NET 19.917 AC.
P.R.O. 6.085 AC.
TOTAL 26.002 AC.

3-1

HONDA OF AMERICA MFG., INC.

PROP. C.R. 179 CURVE DATA
P.I. STA. 216+31.78
Δ = 28°-59'-22" RT. θ = 7°-30'
D = 6°-00' Yc = 249.57'
R = 954.93' Yc = 10.90'
Lc = 233.16' L.T. = 166.82'
Ls = 250.00' S.T. = 83.47'
Ts = 372.50' p = 2.73'
Es = 34.21' k = 124.93'

Date	Revision Description
Completion Date : 12/09/88	

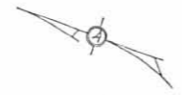
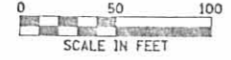
UNION COUNTY
LIBERTY TOWNSHIP

FHWA REGION	STATE	PROJECT
5	OHIO	

147
149

LOGAN COUNTY
LOG-T.R.143-0.00

14
16



220+22.78 - 246.07' LT. =
EX. P.I. STA. 127+14.65
 $\Delta = 1^{\circ}17'27''$ LT.
I.P. (NO CURVE)

THE LINCOLN NATIONAL
LIFE INSURANCE COMPANY

P.I. STA. 137+00.17
 $\Delta = 16^{\circ}52'25''$ RT.
I.P. (NO CURVE)

THE LINCOLN NATIONAL
LIFE INSURANCE COMPANY

V.M.S. 12400 - 12413

HONDA OF AMERICA MFG., INC.

NET 19.917 AC.
P.R.O. 6.085 AC.
TOTAL 26.002 AC.

TANGENT TABLE

NO.	BEARING	DIST.
1	S 32°-15'-00" E	25.00'
2	S 58°-20'-44" W	25.00'
3	N 58°-20'-44" E	30.00'
4	S 12°-12'-11" W	42.84'
5	N 32°-15'-00" W	30.89'

V.M.S. 12400 - 12413

HONDA OF AMERICA MFG., INC.

PROP. C.R. 179 CURVE DATA
P.I. STA. 228+72.36
 $\Delta = 44^{\circ}00'00''$ LT.
D = 6'-00" $\theta = 7^{\circ}30'$
R = 954.93' $X_c = 249.57'$
Lc = 483.33' $Y_c = 10.90'$
Ls = 250.00' L.T. = 166.82'
Ts = 511.85' S.T. = 83.47'
Es = 77.94' p = 2.73'
k = 124.93'

NET 19.917 AC.
P.R.O. 6.085 AC.
TOTAL 26.002 AC.

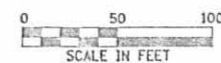
V.M.S. 12282

TREE SYMBOLS
B= BOX ELDER
E= ELM
O= OAK
H= HACKBERRY
WC= WILD CHERRY
A= ASH
M= MAPLE

Date	Revision	Description
Completion Date : 12/09/88		

LOG-T.R.-143 R/W PLAN

UNION COUNTY
LIBERTY TOWNSHIP
V.M.S. 12400 - 12413



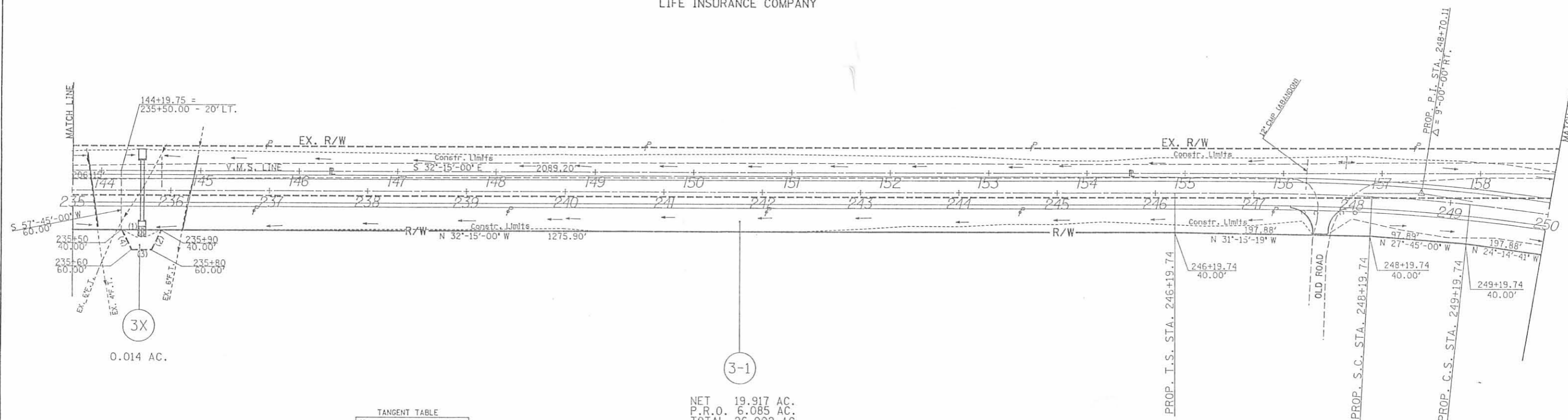
FHWA REGION	STATE	PROJECT
5	OHIO	

148
149

LOGAN COUNTY
LOG-T.R.143-0.00

15
16

THE LINCOLN NATIONAL
LIFE INSURANCE COMPANY



TANGENT TABLE

NO.	BEARING	DIST.
1	S 32°-15'-00" E	40.00'
2	S 84°-18'-54" W	22.36'
3	N 32°-15'-00" W	20.00'
4	N 31°-11'-06" E	22.36'

PROP. C.R.179 CURVE DATA
P.I. STA. 228+72.36
 $\Delta = 44^{\circ}-00'-00"$ LT. $\theta = 7^{\circ}-30'$
D = 6'-00' $X_c = 249.57'$
R = 954.93' $Y_c = 10.90'$
Lc = 483.33' L.T. = 166.82'
Ls = 250.00' S.T. = 83.47'
Ts = 511.85' p = 2.73'
Es = 77.94' k = 124.93'

PROP. C.R.179 CURVE DATA
P.I. STA. 248+70.11
 $\Delta = 9^{\circ}-00'-00"$ RT. $\theta = 3^{\circ}-00'$
D = 3'-00' $X_c = 199.95'$
R = 1909.86' $Y_c = 3.49'$
Lc = 100.00' L.T. = 133.35'
Ls = 200.00' S.T. = 66.68'
Ts = 250.37' p = 0.87'
Es = 6.78' k = 99.99'

HONDA OF AMERICA MFG., INC.

V.M.S. 12282
LIBERTY TOWNSHIP

Date	Revision Description
Completion Date : 12/09/88	

LOG-T.R.-143 R/W PLAN

UNION COUNTY
LIBERTY TOWNSHIP

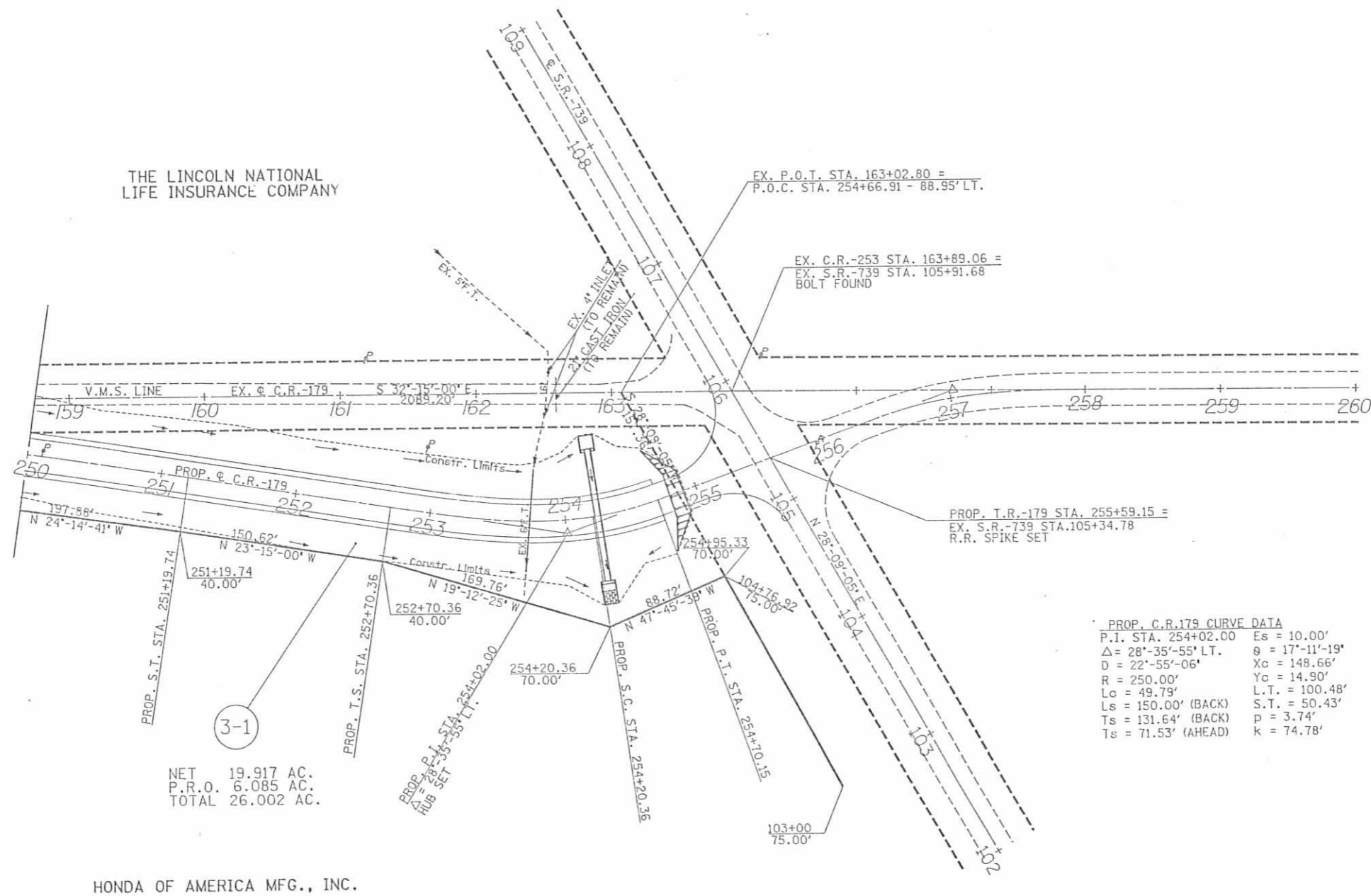
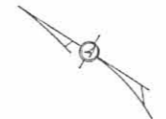
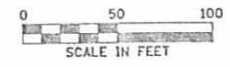
V.M.S. 12400 - 12413

FHWA REGION	STATE	PROJECT
5	OHIO	

149
149

LOGAN COUNTY
LOG-T.R.143-0.00

16
16



THE LINCOLN NATIONAL
LIFE INSURANCE COMPANY

NET 19.917 AC.
P.R.O. 6.085 AC.
TOTAL 26.002 AC.

HONDA OF AMERICA MFG., INC.

PROP. C.R.179 CURVE DATA

P.I. STA. 254+02.00	Es = 10.00'
Δ = 28°-35'-55" LT.	θ = 17°-11'-19"
D = 22°-55'-06"	Xc = 148.66'
R = 250.00'	Yc = 14.90'
Lc = 49.79'	L.T. = 100.48'
Ls = 150.00' (BACK)	S.T. = 50.43'
Ts = 131.64' (BACK)	p = 3.74'
Ts = 71.53' (AHEAD)	k = 74.78'

V.M.S. 12282
LIBERTY TOWNSHIP

Date	Revision Description
Completion Date : 12/09/88	

LOG-T.R.-143 R/W PLAN