

STATE OF OHIO
DEPARTMENT OF TRANSPORTATION
LOG-33-21.51

LOGAN COUNTY LOG-33-21.51	OHIO FHWA REGION 5 FEDERAL PROJECT
------------------------------	--

R/W ONLY LOG-33-21.51
PID 4553 SJN 07559(0)

ACQUIRING AGENCY : STATE OF OHIO

JEFFERSON TOWNSHIP
PERRY TOWNSHIP
LOGAN COUNTY

1993 SPECIFICATIONS

The standard specifications of the State of Ohio, Department of Transportation, including changes and supplemental specifications listed in the proposal shall govern this improvement.

I hereby approve these plans and declare that the making of this improvement will not require the closing of traffic of the highway and that provisions for the maintenance and safety of traffic will be as set forth on the plans and estimates.

LIMITED ACCESS

THIS IMPROVEMENT IS ESPECIALLY DESIGNED FOR THROUGH TRAFFIC AND HAS BEEN DECLARED A LIMITED ACCESS HIGHWAY OR FREEWAY BY ACTION OF THE DIRECTOR IN ACCORDANCE WITH THE PROVISIONS OF SECTION 5511.002 OF THE REVISED CODE OF OHIO

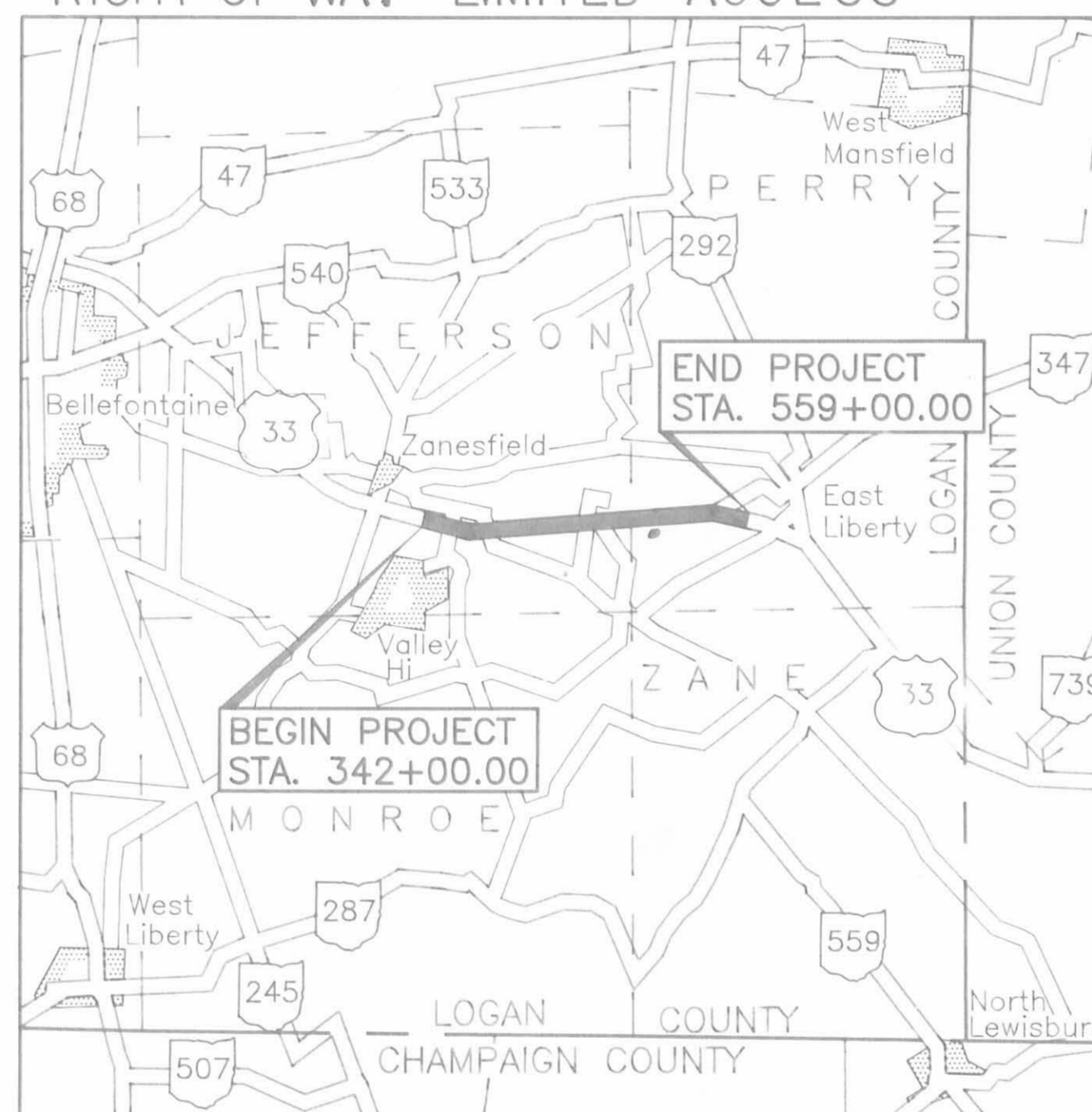
CONVENTIONAL SIGNS

County Line	Limited Access (only)	LA
Township Line	Right of Way (only)	R/W
Section Line	Limited Access & Right of Way	LA-R/W
Corporation Line	Existing Right of Way	Ex. R/W
Fence Line (existing)	Property Line (in existing fence)	X R X
Centerline	Railroad	or
Trees	Guardrail (existing)	(proposed)
Stumps	Work Limits	WORK LIMITS
(to be removed)		
Utility Poles: Telephone		
Power		
Light		

INDEX OF SHEETS

TITLE SHEET	
CENTER LINE SURVEY PLAT.....	1-2
PROPERTY MAP.....	3-4
RIGHT OF WAY SUMMARY.....	5-6
DETAIL SHEETS.....	7-23
HONDA PLAT.....	24

RIGHT OF WAY - LIMITED ACCESS

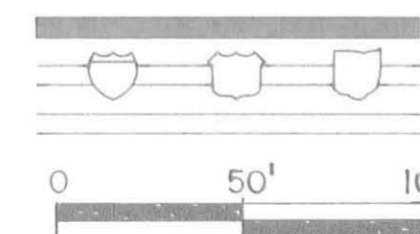


UNDERGROUND UTILITIES
TWO (2) WORKING DAYS
BEFORE YOU DIG
Call 800-362-2764 (Toll free)
OHIO UTILITIES PROTECTION SERVICE
NON - MEMBERS
MUST BE CALLED DIRECTLY

LOCATION MAP



Portion to be improved
State & Federal Routes
Other Routes



PLAN SCALE



Approved _____
Date _____ Assistant Deputy Director, Real Estate Administration

Approved _____
Date _____ Director, Department of Transportation

DEPARTMENT OF TRANSPORTATION
FEDERAL HIGHWAY ADMINISTRATION
APPROVED:
DIVISION ADMINISTRATOR DATE

Plans Prepared By:
DODSON - LINDBLOM ASSOCIATES, INC.
CONSULTING ENGINEERS
6121 HUNTLEY RD.
COLUMBUS, OHIO 43229-1003

William L. Strange E32123
Registered Engineer NO Date 10/9/92



FILE NO. _____

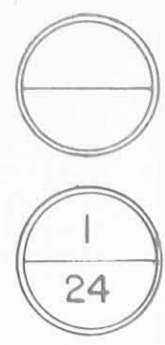
Project: LOG-33-21.51 LOGAN COUNTY

Date of Letting _____ 19 __, Contract No. _____

CENTERLINE SURVEY PLAT LOG-33-21.51 JEFFERSON TOWNSHIP LOGAN COUNTY

FHWA REGION	STATE	PROJECT	CALC. DATE
5	OHIO		CHKD DATE

LOGAN COUNTY
LOG-33-21.51



U.S.33 CURVE DATA PI STA. 375+29.07 $\Delta = 19^\circ 53' 45''$ LT. Dc=1° R = 5729.58' T = 1004.91' L = 1989.58' P.C. STA. 365+24.16 P.T. STA. 385+13.75	S.R.292 CURVE DATA PI STA. 19+90.69 $\Delta = 29^\circ 38' 13''$ LT. Dc=6° R = 954.93' T = 252.63' L = 493.94' P.C. STA. 17+38.06 P.T. STA. 22+32.00	C.R.153 CURVE DATA PI STA. 102+37.81 $\Delta = 17^\circ 51' 08''$ LT. Dc=6° R = 954.93' T = 149.99' L = 297.54' P.C. STA. 100+87.82 P.T. STA. 103+85.36	C.R.153 CURVE DATA PI STA. 111+20.62 $\Delta = 20^\circ 50' 04''$ RT. Dc=4° R = 1432.39' T = 263.34' L = 520.86' P.C. STA. 108+57.28 P.T. STA. 113+78.14	C.R.153 CURVE DATA PI STA. 137+96.63 $\Delta = 29^\circ 04' 26''$ RT. D=6° R = 954.93' T = 247.62' L = 484.57' P.C. STA. 135+49.06 P.T. STA. 140+33.63	RAMP "A" CURVE DATA PI STA. 157+33.44 $\Delta = 21^\circ 26' 45''$ LT. Dc=4° R = 1432.39' T = 271.25' L = 536.15' P.C. STA. 154+62.19 P.T. STA. 159+98.34	RAMP "B" CURVE DATA PI STA. 276+33.57 $\Delta = 32^\circ 0' 22''$ LT. Dc=4° R = 1432.39' T = 412.39' L = 803.07' P.C. STA. 272+21.18 P.T. STA. 280+24.25	RAMP "C" CURVE DATA PI STA. 478+96.73 $\Delta = 5^\circ 05' 06''$ RT. Dc=4° R = 1432.39' T = 63.60' L = 127.13' P.C. STA. 478+33.13 P.T. STA. 479+60.26	RAMP "D" CURVE DATA PI STA. 553+97.19 $\Delta = 17^\circ 07' 19''$ RT. Dc=4° R = 1432.39' T = 215.63' L = 428.05' P.C. STA. 551+81.37 P.T. STA. 566+09.42
--	---	--	---	---	--	---	--	--

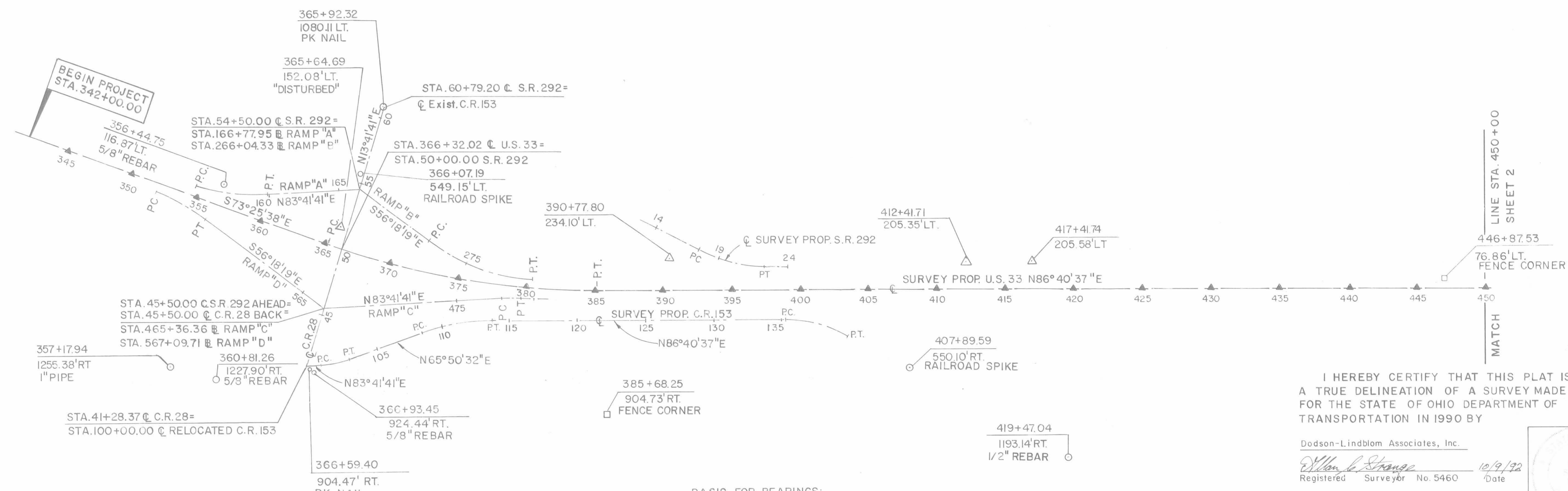


LIMITED ACCESS

THIS IMPROVEMENT IS ESPECIALLY DESIGNED FOR THROUGH TRAFFIC AND HAS BEEN DECLARED A LIMITED ACCESS HIGHWAY OR FREEWAY BY ACTION OF THE DIRECTOR IN ACCORDANCE WITH THE PROVISIONS OF SECTION 5511.002 OF THE REVISED CODE OF OHIO

LEGEND

PROPOSED CENTERLINE MONUMENT	▲
PROPOSED OFFSET MONUMENT	●
IRON PIN (FOUND AND USED)	○
EXIST. R/W MONUMENT (FOUND & USED)	△
FOUND FENCE CORNER	□



PROPOSED CENTERLINE MONUMENTS U.S.33	
STA. 345+00	STA. 400+00
STA. 350+00	STA. 405+00
STA. 355+00	STA. 410+00
STA. 360+00	STA. 415+00
STA. 365+00	STA. 420+00
STA. 370+00	STA. 425+00
STA. 375+00	STA. 430+00
STA. 380+00	STA. 435+00
STA. 385+00	STA. 440+00
STA. 390+00	STA. 445+00
STA. 395+00	STA. 450+00

BASIS FOR BEARINGS:
ALL BEARINGS SHOWN FOR PROJECT USE ONLY. THESE BEARINGS ARE TO AN ASSUMED MERIDIAN AND ARE USED TO DELINEATE ANGLES ONLY.

I HEREBY CERTIFY THAT THIS PLAT IS A TRUE DELINEATION OF A SURVEY MADE FOR THE STATE OF OHIO DEPARTMENT OF TRANSPORTATION IN 1990 BY

Dodson-Lindblom Associates, Inc.
William L. Strange
Registered Surveyor No. 5460 Date 10/9/92



RECEIVED _____
 RECORDED _____
 PLAT BOOK _____ PAGE _____
 SIGNED _____ LOGAN COUNTY, OHIO
 Recorder

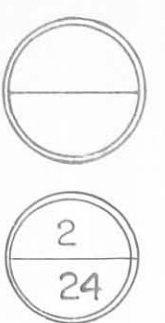
CENTERLINE SURVEY PLAT

LOG-33-21.51

JEFFERSON TOWNSHIP PERRY TOWNSHIP LOGAN COUNTY

FHWA REGION	STATE	PROJECT	CALC. DATE
5	OHIO		
			CHKD DATE

LOGAN COUNTY
LOG-33-21.51



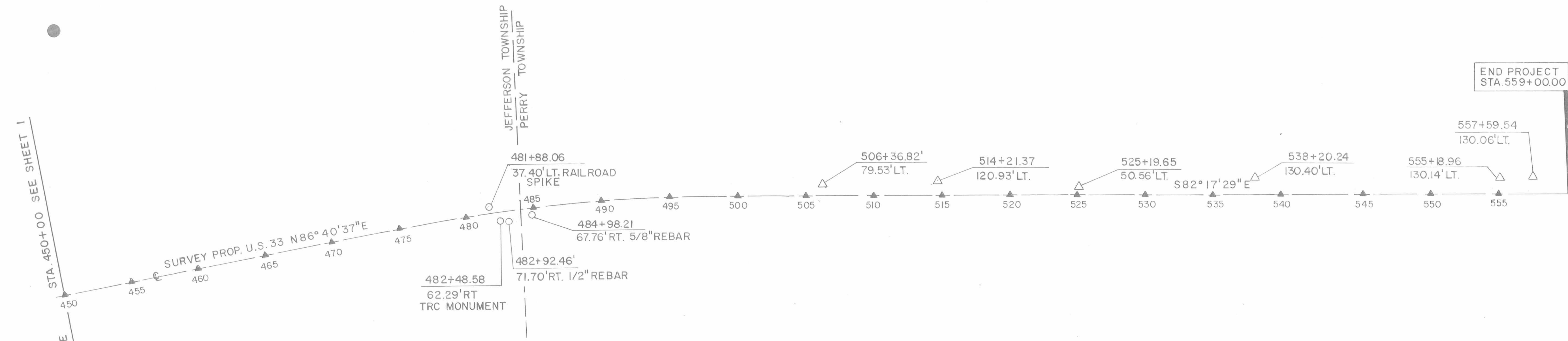
LIMITED ACCESS

THIS IMPROVEMENT IS ESPECIALLY DESIGNED FOR THROUGH TRAFFIC AND HAS BEEN DECLARED A LIMITED ACCESS HIGHWAY OR FREEWAY BY ACTION OF THE DIRECTOR IN ACCORDANCE WITH THE PROVISIONS OF SECTION 5511.002 OF THE REVISED CODE OF OHIO

LEGEND

- PROPOSED CENTERLINE MONUMENT ▲
- PROPOSED OFFSET MONUMENT ●
- IRON PIN (FOUND AND USED) ○
- EXIST. R/W MONUMENT (FOUND & USED) △
- FOUND FENCE CORNER □

U.S. 33 CURVE DATA
 P.I. STA. 487+16.20
 $\Delta = 11^\circ 01' 54''$ RT.
 $D_c = 0^\circ 28'$
 $R = 12277.67$
 $T = 1185.63'$
 $L = 363.93'$
 P.C. STA. 475+30.57
 P.T. STA. 498+94.51



END PROJECT
STA. 559+00.00

452+74.19
974.94' RT.
1/2" REBAR

PROPOSED CENTERLINE MONUMENTS U.S. 33	
STA. 450 + 00	STA. 510 + 00
STA. 455 + 00	STA. 515 + 00
STA. 460 + 00	STA. 520 + 00
STA. 465 + 00	STA. 525 + 00
STA. 470 + 00	STA. 530 + 00
STA. 475 + 00	STA. 535 + 00
STA. 480 + 00	STA. 540 + 00
STA. 485 + 00	STA. 545 + 00
STA. 490 + 00	STA. 550 + 00
STA. 495 + 00	STA. 555 + 00
STA. 500 + 00	
STA. 505 + 00	

BASIS FOR BEARINGS
 ALL BEARINGS SHOWN ARE FOR PROJECT USE ONLY. THESE BEARINGS ARE TO AN ASSUMED MERIDIAN AND ARE USED TO DELINEATE ANGLES ONLY.

I HEREBY CERTIFY THAT THIS PLAT IS A TRUE DELINEATION OF A SURVEY MADE FOR THE STATE OF OHIO DEPARTMENT OF TRANSPORTATION IN 1990 BY

Dodson-Lindblom Associates, Inc.

Allen S. Strange
 Registered Surveyor No. 5460 Date 10/9/92



RECEIVED _____
 RECORDED _____
 PLAT BOOK _____ PAGE _____
 SIGNED _____ LOGAN COUNTY, OHIO
 Recorder



PROPERTY MAP

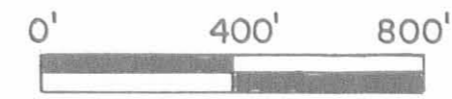
JEFFERSON TOWNSHIP LOGAN COUNTY

THE RELOCATION AND ESTABLISHMENT AS A LIMITED ACCESS HIGHWAY GRANTED. ENTRY IN JOURNAL OF THE DIRECTOR
DATE: JUNE 29, 1960 VOL. 45 PAGE: 665

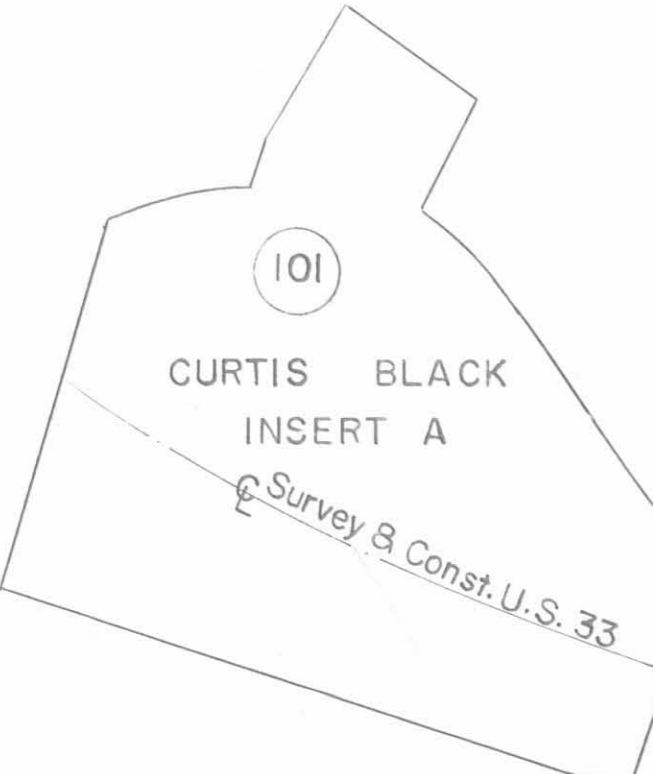
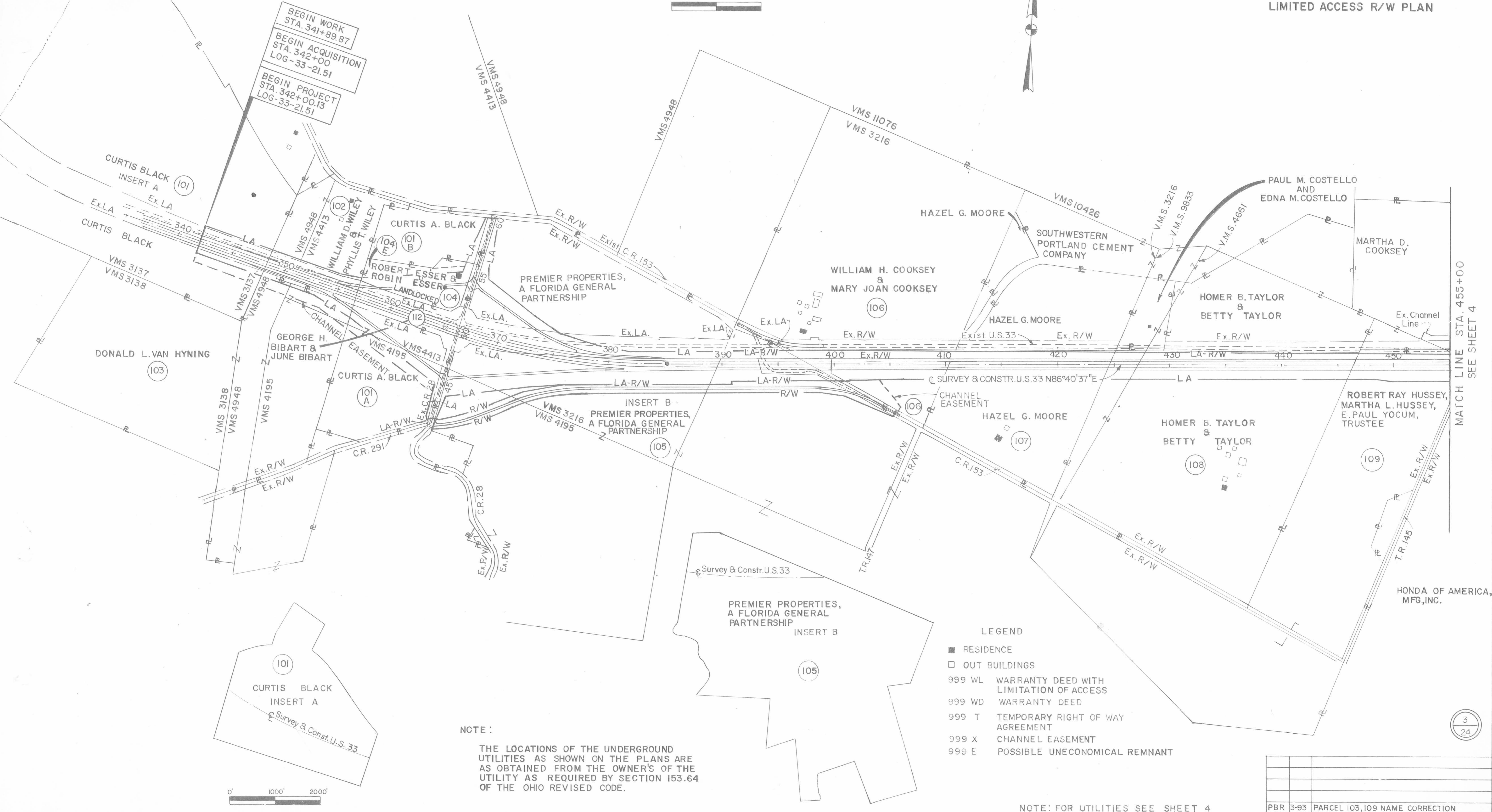
FHWA REGION	STATE	PROJECT	CALC. DATE
5	OHIO		CHKD DATE

LOGAN COUNTY
LOG-33-21.51

LIMITED ACCESS R/W PLAN



3
24



NOTE:
THE LOCATIONS OF THE UNDERGROUND UTILITIES AS SHOWN ON THE PLANS ARE AS OBTAINED FROM THE OWNER'S OF THE UTILITY AS REQUIRED BY SECTION 153.64 OF THE OHIO REVISED CODE.

- LEGEND
- RESIDENCE
 - OUT BUILDINGS
 - 999 WL WARRANTY DEED WITH LIMITATION OF ACCESS
 - 999 WD WARRANTY DEED
 - 999 T TEMPORARY RIGHT OF WAY AGREEMENT
 - 999 X CHANNEL EASEMENT
 - 999 E POSSIBLE UNECONOMICAL REMNANT

NOTE: FOR UTILITIES SEE SHEET 4

PBR	3-93	PARCEL 103, 109 NAME CORRECTION
	1-93	COMPLETION DATE
REV.	DATE	DESCRIPTION

3
24

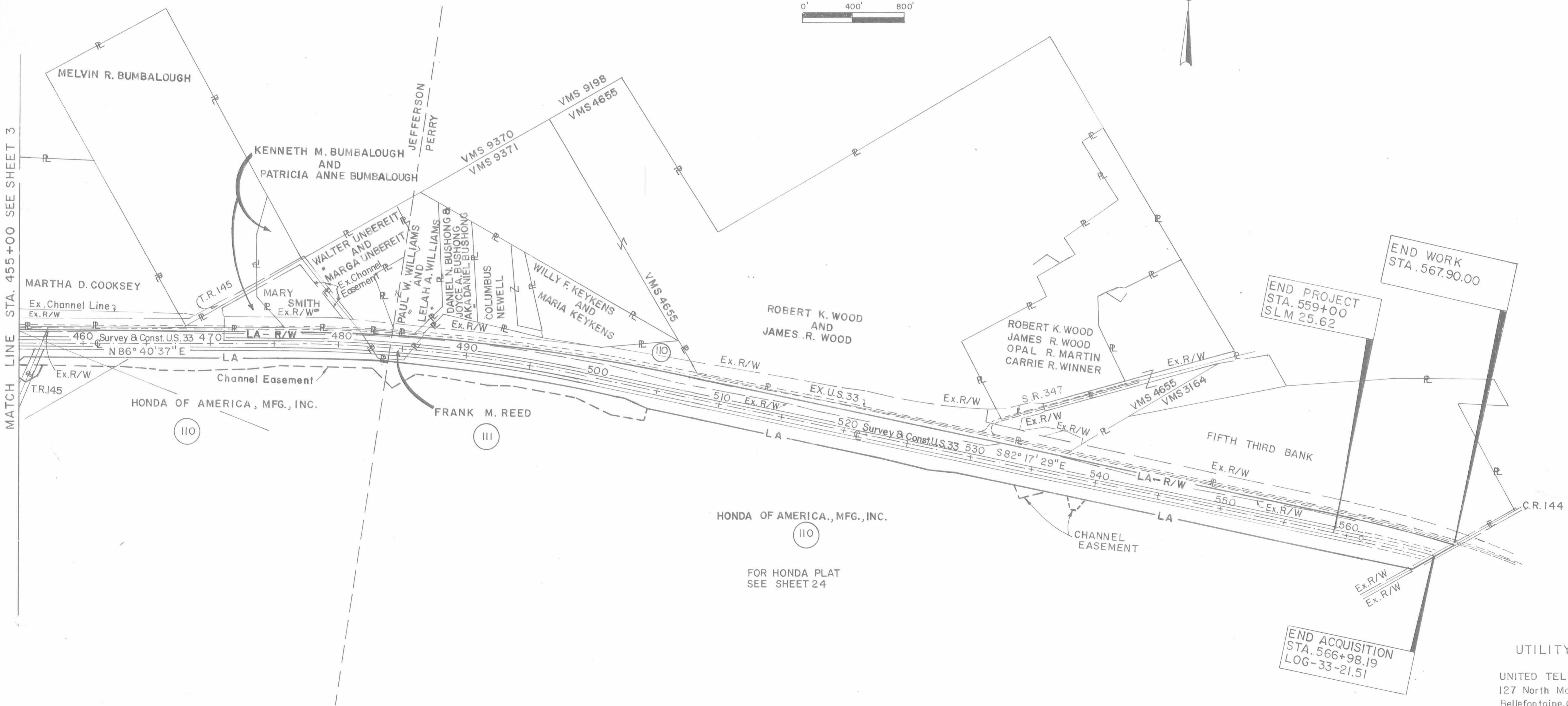
PROPERTY MAP

JEFFERSON TOWNSHIP PERRY TOWNSHIP LOGAN COUNTY

FHWA REGION	STATE	PROJECT	CALC. DATE
5	OHIO		CHKD. DATE

LOGAN COUNTY
LOG-33-21.51

LIMITED ACCESS R/W PLAN



MATCH LINE STA. 455+00 SEE SHEET 3

END WORK
STA. 567.90.00

END PROJECT
STA. 559+00
SLM 25.62

END ACQUISITION
STA. 566+98.19
LOG-33-21.51

HONDA OF AMERICA, MFG., INC.

FOR HONDA PLAT
SEE SHEET 24

UTILITY OWNERS

UNITED TELEPHONE
127 North Main Street
Bellefontaine, Ohio 43311
(513) 599-9378

DAYTON POWER AND LIGHT CO.
P.O. BOX 1247
Courthouse Plaza SW
Dayton, Ohio 45401
(513) 599-4923

HEARTLAND CABLEVISION
109 East Wapakoneta Street.
Waynesfield, Ohio 45896
(419) 568-1275

NOTE:

THE LOCATIONS OF THE UNDERGROUND UTILITIES AS SHOWN ON THE PLANS ARE AS OBTAINED FROM THE OWNER'S OF THE UTILITY AS REQUIRED BY SECTION 153.64 OF THE OHIO REVISED CODE.

FOR LEGEND SEE SHEET 3

REV.	DATE	DESCRIPTION
PBR	3-93	ADDIT. LABELING, UTILITY OWNER CHANGE
	1-93	COMPLETION DATE

FHWA REGION	STATE	PROJECT	CALC. DATE:
5	OHIO		CHKD. DATE:



SUMMARY OF ADDITIONAL RIGHT OF WAY

PID NO. 4553
STATE JOB NO. 07559(0)

LOGAN COUNTY
LOG-33-21.51

Total Number of
 11 Ownerships
 1 Total Takes
 2 Ownerships With Structures Involved
 1 Ownerships With "P" Items

Parcel	Owner	Sheet No.	Owners Record		Record Area	Total P.R.O.	Gross Take	P.R.O. in Take	Net Take	Structure	Net Residue		Type Fund	Remarks and Personality	As Acquired	
			Book	Page							Left	Right			Book	Page
I - 100	Parcel Numbers Not Used															
IOIWL	Curtis Black AKA Curtis A. Black	7	236	12	178.520	19.832	3.226	2.927	0.299	NO	113.172	45.217	State	12-109-00-00-061.000 Cont. 0.111 ac. ex. channel (23X-1961) Contains 2.927 ac. existing LA easement (23LA-1961)		
IOIAWL	Curtis Black AKA Curtis A. Black	8,9	282	221	22.520	1.119	5.730	0.505	5.225	NO	-	16.176	State	12-109-00-00-069.000 & 12-109-00-00-070.000 ** Cont. 0.272 ac. ex. road (25A-1961) Cont. 0.029 ac. United Tel.		
II2WL	George H. Bibart & June Bibart	8	272	244	5.435	5.435	5.435	5.435	0.0	NO	0.0	0.0	State	12-109-00-00- ** Cont. 5.435 ac. ex. LA easement (25LA-1961)		
IOIBWL	Curtis Black AKA Curtis A. Black	9	282	221	11.030	0.811	0.829	0.311	0.518	NO	9.701	-	State	12-109-00-00-048.000 **		
IOIX	Curtis Black AKA Curtis A. Black	7	236	12	178.520	-	1.113	-	1.113	NO	-	-	State	12-109-00-00-061.000 Cont. 0.773 ac. ex. channel easement (23X-1961)		
IOIAX	Curtis Black AKA Curtis A. Black	8,9	282	221	22.520	-	1.607	-	1.607	NO	-	-	State	12-109-00-00-069.000 & 12-109-00-00-070.000		
IO2WL	William D. Wiley & Phyllis T. Wiley	7,8	353	595	18.340	4.892	4.996	4.409	0.587	NO	12.861	-	State	12-109-00-00-049.000 & 12-109-00-00-050.000 Cont. 0.103 ac. ex. channel easement (24X-1961) Cont. 4.409 ac. ex. LA easement (24LA-1961)		
IO3WL	Donald L. Van Hying	7	OR161	204	10.900 83.37 *	0.207	0.047	0.0	0.047	NO	-	10.646	State	12-109-00-00-064.000 Cont. 0.047 ac. ex. channel easement (24XI-1961)		
IO3WL-1	Donald L. Van Hying	8	OR161	204	2.600 83.37 *	0.0	0.286	0.0	0.286	NO	-	2.314	State	12-109-00-00-068.000		
IO3X	Donald L. Van Hying	7,8	OR161	204	13.500 83.37 *	-	1.639	-	1.639	NO	-	-	State	12-109-00-00-064.000 & 12-109-00-00-068.000 Cont. 0.130 ac. ex. channel easement (24XI-1961)		
IO4WL	Robert Esser & Robin Esser	8,9	OR34	433	7.620	0.423	5.165	0.423	4.742	YES, P	2.455	-	State	12-109-00-00-047.000 ** Mobile sign Cont. 0.390 ac. ex. road easement (25-1961)		
IO4E	Robert Esser & Robin Esser	8,9	OR34	433	7.620	-	2.422	-	2.422	YES	-	-	State	12-109-00-00-047.000 Land Locked		
IO4T	Robert Esser & Robin Esser	8,9	OR34	433	7.620	-	0.142	-	0.142	YES	-	-	State	12-109-00-00-047.000 For Bldg. Removal (18 Months)		
IO5WL	Premier Properties, a Florida General Partnership	9,10 11,12	OR116	978	227.590	19.036	35.602	13.880	21.722	NO	31.352	148.826	State	12-109-00-00-046.000 & 12-109-00-00-075.000 & 12-109-00-00-076.000 Cont. 1.399 ac. ex. LA easement (27LA-1961) Cont. 2.214 ac. ex. rd. easement (26,26A,27-1961) Cont. 0.069 ac. United Tel.		
IO5WV	Premier Properties, a Florida General Partnership	9,10 11,12	OR116	978	227.590	-	6.941	0.287	6.654	NO	-	-	State	12-109-00-00-046.000 & 12-109-00-00-075.000 & 12-109-00-00-076.000 Cont. 0.167 ac. ex. road easement (27-1961)		
IO5E	Premier Properties, a Florida General Partnership	9,10	OR116	978	142.70 227.590 *	-	2.208	-	2.208	NO	-	-	State	12-109-00-00-046.000 & 12-109-00-00-075.000		
IO5XV	Premier Properties, a Florida General Partnership	10	OR116	978	66.490 227.590 *	-	0.113	-	0.113	NO	-	-	State	12-109-00-00-046.000		

** Parcel contains Dayton Power and Light Co. pole easement

Record area after out sales minus total P.R.O. minus net take equals net residue

* Total Acreage Owned

Note: "Under no circumstances are the temporary easements acquired for the purpose of removal of a building, to be used for storage of material and equipment. Upon completion of the work of removal of the building in this area, the temporary easements shall be immediately vacated."



PBR	3-93	Parcel IOICWL, IO3 name corrections
	1-93	Completion Date
Rev.	Date	Description

SUMMARY OF ADDITIONAL RIGHT OF WAY

FHWA REGION	STATE	PROJECT	CALC. DATE
5	OHIO		CHKD. DATE

PID NO. 4553
STATE JOB NO. 07559(0)

LOGAN COUNTY
LOG-33-21.51

Parcel	Owner	Sheet No.	Owners Record		Record Area	Total P.R.O.	Gross Take	P.R.O. in Take	Net Take	Structure	Net Residue		Type Fund	Remarks and Personality	As Acquired	
			Book	Page							Left	Right			Book	Page
IO6WL	William H. Cooksey & Mary Joan Cooksey	12	320	168	84.010	6.018	5.828	2.137	3.691	NO	66.484	7.817	State	12-109-00-00-045.000 Cont. 2.137 ac. ex. road easement (28-1961)		
IO6XV	William H. Cooksey & Mary Joan Cooksey	12	320	168	84.010	-	0.766	-	0.766	NO	-	-	State	12-109-00-00-045.000		
IO7WL	Hazel G. Moore	12,13	350	499	49.550	5.251	6.748	1.786	4.962	NO	18.730	20.607	State	12-110-00-00-059.000 Cont. 1.786 ac. ex. road easement (29-1961)		
IO8WL	Homer B. Taylor & Betty Taylor	13,14,15	226	191	109.700	7.731	10.226	2.704	7.522	NO	20.967	73.480	State	12-110-00-00-057.000 & 12-110-00-00-058.000 Cont. 2.704 ac. ex. road easement (32-1961)		
IO9WL	Robert Ray Hussey, Martha L. Hussey, E. Paul Yocum, Trustees	15,16	OR122	656	112.510	2.788	4.758	1.308	3.450	NO	-	106.186	State	12-110-00-00-061.000 Cont. 1.308 ac. ex. road easement (33-1961)		
IO9WV	Robert Ray Hussey, Martha L. Hussey, E. Paul Yocum, Trustees	15	OR122	656	112.510	-	0.154	0.068	0.086	NO	-	-	State	12-110-00-00-061.000 Cont. 0.068 ac. ex. road easement (33-1961)		
IO9X	Robert Ray Hussey, Martha L. Hussey, E. Paul Yocum, Trustees	15,16	OR122	656	112.510	-	0.131	-	0.131	NO	-	-	State	12-110-00-00-061.000 Cont. 0.046 ac. ex. road easement (33-1961)		
II0WL	Honda of America, Mfg., Inc.	16,17,18 19,20,21 22,23	OR56	241	3500.740	67.947	68.792	12.408	56.384	NO	0.0	3376.305	State	12-110-00-00-055.000 & 32-112-00-00-034.000 Cont. 2.301 ac. ex. channel easement (7X,7Y,8X-1948) Cont. 12.262 ac. ex. road easement (1,2R,2RX,4,6,7,8,9-1948) Cont. 0.638 ac. ex. D.P. & L. easement		
II0WV	Honda of America, Mfg., Inc.	15,16	OR56	241	306.050	-	0.165	0.061	0.104	NO	-	-	State	12-110-00-00-055.000		
II0X	Honda of America, Mfg., Inc.	16,17 18,19	OR56	241	3500.740	-	8.509	-	8.509	NO	-	-	State	12-110-00-00-055.000 & 32-112-00-00-034.000 Cont. 0.115 ac. ex. road easement (1A,2RA-1948)		
II0X-1	Honda of America, Mfg., Inc.	21	OR56	241	3194.690	-	0.181	-	0.181	NO	-	-	State	32-112-00-00-034.000		
II0X-2	Honda of America, Mfg., Inc.	21	OR56	241	3194.690	-	0.184	-	0.184	NO	-	-	State	32-112-00-00-034.000		
II0T	Honda of America, Mfg., Inc.	17	OR56	241	3500.740	-	0.469	-	0.469	NO	-	-	State	12-110-00-00-055.000 & 32-112-00-00-034.000 For construction of drive turnaround (6 Months) Cont 0.016 ac. ex. road easement (1A-1948)		
IIIWL	Frank M. Reed	17	381	708	2.130	1.069	1.639	0.553	1.086	YES	0.0	0.0	State	12-110-00-00-052.000 & 32-110-00-00-051.000 Total Take, Cont. 0.553 ac. ex. road easement (3-1948)		
IIIWD	Frank M. Reed	17	381	708	2.130	1.069	0.516	0.516	0.0	NO	0.0	0.0	State	12-110-00-00-052.000 & 32-110-00-00-051.000 Total Take, Cont. 0.516 ac. ex. road easement (3-1948)		

Record area after out sales minus total P.R.O. minus net take equals net residue

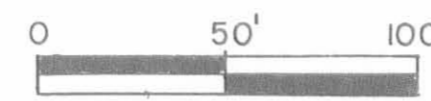
Note: "Under no circumstances are the temporary easements acquired for the purpose of removal of a building, to be used for storage of material and equipment. Upon completion of the work of removal of the building in this area, the temporary easements shall be immediately vacated."

PBR	3-93	Parcel IO9WL, II0WI - P.R.O. Change
PBR	3-93	Parcel IO6, IO9 name corrections
	1-93	Completion Date
Rev.	Date	Description

LOGAN COUNTY
JEFFERSON TOWNSHIP
V.M.S. 3137 & 4195 & 4413 & 4948

FHWA REGION	STATE	PROJECT	CALC. DATE
5	OHIO		
			CHKD. DATE

LOGAN COUNTY
LOG-33-21.51



EXISTING R/W ACQUIRED UNDER
PROJECT LOG-33-17.29,1961

LIMITED ACCESS R/W PLAN

7
24

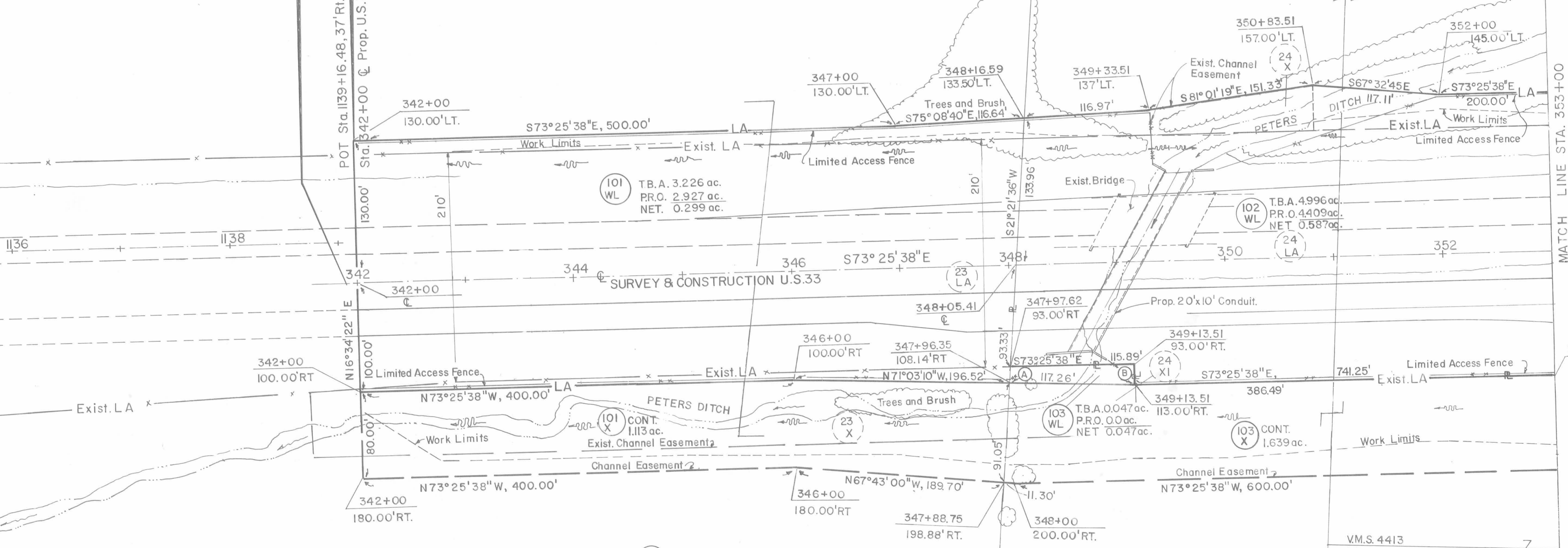
BEGIN ACQUISITION
STA. 342+00
LOG-33-21.51

BEGIN WORK
STA. 341+89.87

BEGIN PROJECT
STA. 342+00.13
SLM 21.51

CURTIS BLACK 101

WILLIAM D. WILEY &
PHYLLIS T. WILEY 102



101 WL T.B.A. 3.226 ac.
P.R.O. 2.927 ac.
NET. 0.299 ac.

102 WL T.B.A. 4.996 ac.
P.R.O. 4.409 ac.
NET 0.587 ac.

101 X CONT. 1.113 ac.

103 WL T.B.A. 0.047 ac.
P.R.O. 0.0 ac.
NET 0.047 ac.

103 X CONT. 1.639 ac.

CURTIS BLACK 101

DONALD L. VAN HYNING 103

FOR LEGEND SEE SHEET 3

7
24

Line No.	Bearing	Distance
A	N21°21'36"E	15.20'
B	S16°34'22"W	20.00'

REV.	DATE	DESCRIPTION
PBR	3-93	PARCEL 103 NAME CORRECTION
I-93		COMPLETION DATE

EXISTING R/W ACQUIRED UNDER PROJECT LOG-33-17.29, 1961

LOGAN COUNTY JEFFERSON TOWNSHIP V.M.S. 4195 & 4413

N47°26'23"E 87.40' MATCH LINE S.R.292 STA. 55+00 SEE SHEET 9

FHWA REGION	STATE	PROJECT	CALC. DATE
5	OHIO		ENKD DATE

LOGAN COUNTY LOG-33-21.51

LIMITED ACCESS R/W PLAN

Sta. 54+50.00 @ S.R.292
Sta. 166+77.95 @ Ramp A

WILLIAM D. WILEY & PHYLLIS T. WILEY V.M.S. 4413

CURVE DATA
PI Sta. 157+33.44
 $\Delta = 21^\circ 26' 45''$ Lt.
Dc = 4°
R = 1432.39'
T = 271.25'
L = 536.15'

CURTIS A. BLACK

ROBERT ESSER & ROBIN ESSER

SEE SHEET 7 MATCH LINE STA. 353+00

MATCH LINE SURVEY & CONSTRUCTION U.S.33

MATCH LINE SURVEY & CONSTRUCTION U.S.33

MATCH LINE SURVEY & CONSTRUCTION U.S.33

102 T.B.A. 4.996 ac.
P.R.O. 4.409 ac.
NET 0.587 ac.

112 T.B.A. 5.435 ac.
P.R.O. 5.435 ac.
NET 0.0 ac.

GEORGE H. BIBART & JUNE BIBART

24 LA

103 T.B.A. 0.286 ac.
P.R.O. 0.0 ac.
NET 0.286 ac.

25 LA

R = 5879.56'
S75°17'49"E
Ch = 383.63'
Arc = 383.70'

10' UNITED TELEPHONE COMPANY EASEMENT

101 AWL T.B.A. 5.730 ac.
P.R.O. 0.505 ac.
NET 5.225 ac.

CURVE DATA
PI Sta. 553+97.00
 $\Delta = 17^\circ 07' 19''$ Rt.
Dc = 4°
R = 1432.39'
T = 215.63'
L = 428.05'

DONALD L. VAN HYNING

CURTIS A. BLACK

V.M.S. 4195 FOR LEGEND SEE SHEET 3

MATCH LINE C.R. 28 STA. 45+00 SEE SHEET 9

Sta. 45+50.00 @ S.R. 292 AHEAD
Sta. 45+50.00 @ C.R. 28 BACK
Sta. 567+09.71 @ Ramp D

PBR 3-93	PARCEL 103 NAME CORREC.	PARCEL 101 P.R.O. CHN
I-93	COMPLETION DATE	
REV.	DATE	DESCRIPTION

LOGAN COUNTY
JEFFERSON TOWNSHIP
V.M.S. 3216 & 4195 & 4413

FHWA REGION	STATE	PROJECT	CALC. DATE
5	OHIO		
			CHKD. DATE

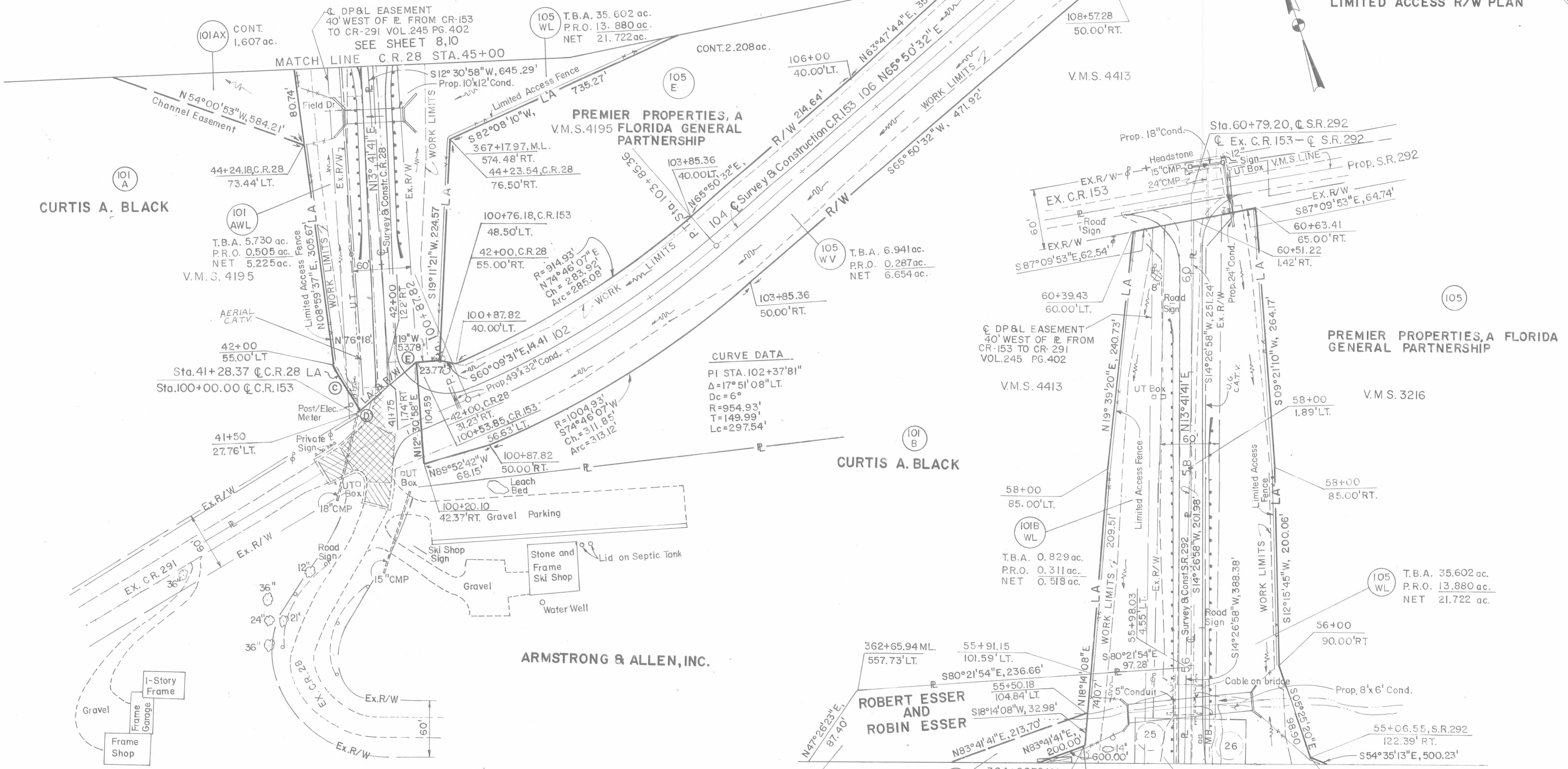
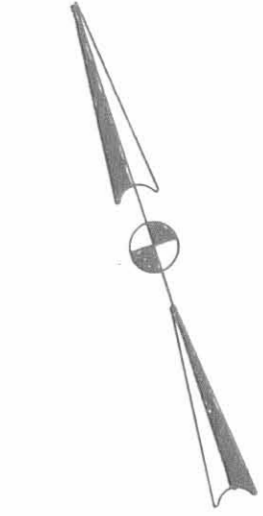
LOGAN COUNTY
LOG-33-21.51

LIMITED ACCESS R/W PLAN

9
24



R=1382.39'
S76°15'35"W
Ch=499.92'
Arc=502.68'



CURVE DATA
PI STA. 102+37.81"
Δ=17°51'08"LT.
Dc=6°
R=954.93'
T=149.99'
Lc=297.54'

Line No.	Bearing	Distance
C	N14°53'30"W	56.94'
D	S63°24'26"W	38.66'
E	S63°24'26"W	38.66'

EXISTING R/W ACQUIRED UNDER PROJECT LOG-33-17.29, 1961

FOR LEGEND SEE SHEET 3

PBR 3-93	PARCEL 101, 105 P.R.O. CHANGE
1-93	COMPLETION DATE
REV. DATE	DESCRIPTION

9
24

FHWA REGION	STATE	PROJECT	CALC. DATE
5	OHIO		
			CHKD DATE

LOGAN COUNTY
LOG-33-21.51

LOGAN COUNTY JEFFERSON TOWNSHIP V.M.S. 3216 & 4195



V.M.S. 3216

LIMITED ACCESS R/W PLAN

PREMIER PROPERTIES, A FLORIDA
GENERAL PARTNERSHIP

Sta. 54+50.00 @ S.R. 292
Sta. 266+04.33 @ Ramp B

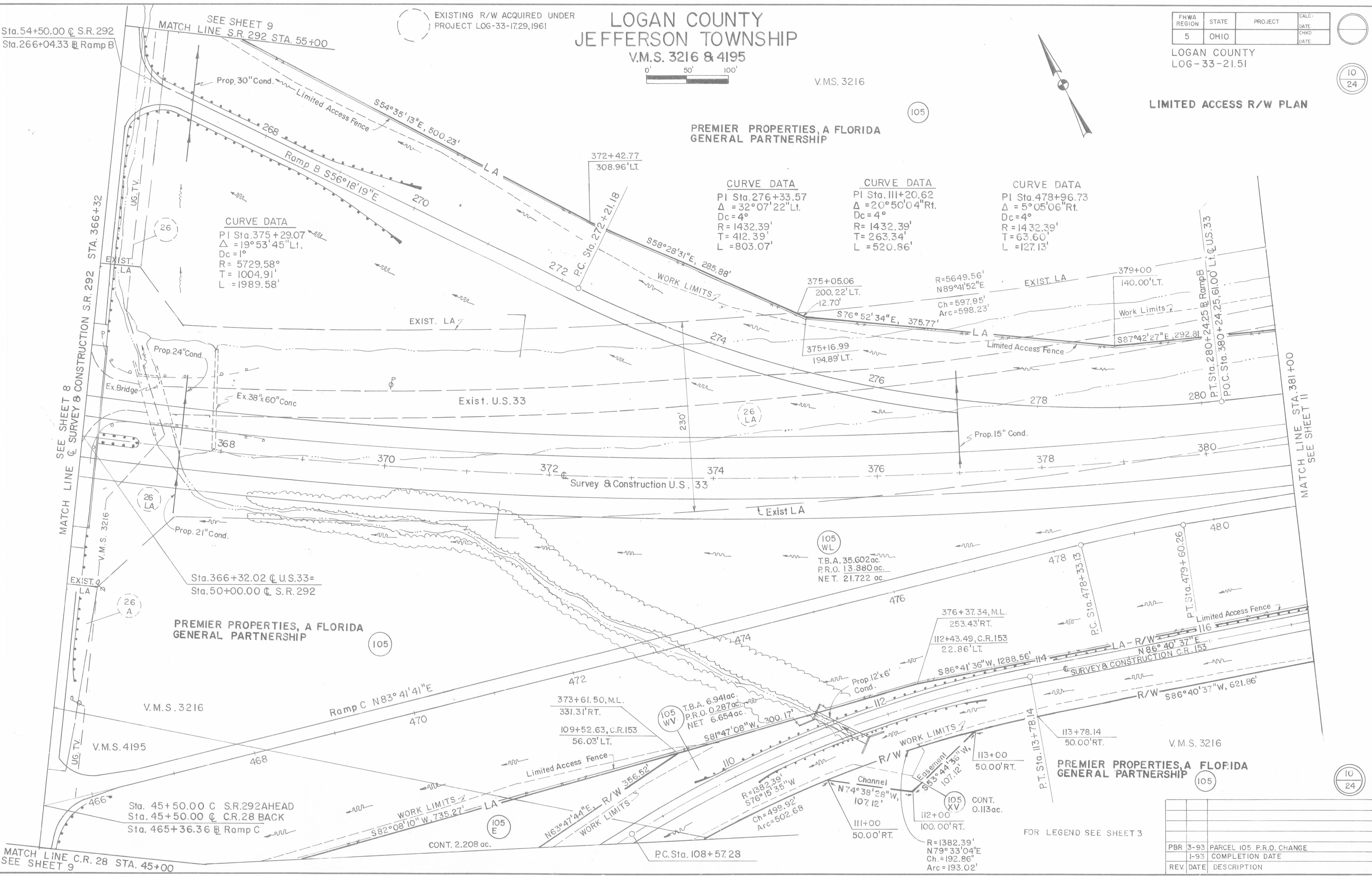
Sta. 45+50.00 @ S.R. 292 AHEAD
Sta. 45+50.00 @ C.R. 28 BACK
Sta. 465+36.36 @ Ramp C

CURVE DATA
PI Sta. 375+29.07
 $\Delta = 19^\circ 53' 45''$ Lt.
Dc = 1°
R = 5729.58'
T = 1004.91'
L = 1989.58'

CURVE DATA
PI Sta. 276+33.57
 $\Delta = 32^\circ 07' 22''$ Lt.
Dc = 4°
R = 1432.39'
T = 412.39'
L = 803.07'

CURVE DATA
PI Sta. 111+20.62
 $\Delta = 20^\circ 50' 04''$ Rt.
Dc = 4°
R = 1432.39'
T = 263.34'
L = 520.86'

CURVE DATA
PI Sta. 478+96.73
 $\Delta = 5^\circ 05' 06''$ Rt.
Dc = 4°
R = 1432.39'
T = 63.60'
L = 127.13'



105 WL
T.B.A. 35.602 ac.
P.R.O. 13.880 ac.
NET. 21.722 ac.

105 WV
T.B.A. 6.94 ac.
P.R.O. 0.287 ac.
NET 6.654 ac.

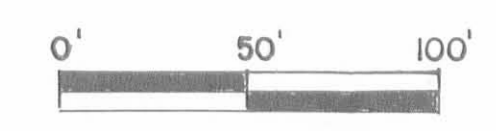
105 XV
CONT. 0.113 ac.
R=1382.39'
N79°33'04"E
Ch.=192.86'
Arc=193.02'

FOR LEGEND SEE SHEET 3

PBR	3-93	PARCEL 105 P.R.O. CHANGE
REV	1-93	COMPLETION DATE
REV	DATE	DESCRIPTION

EXISTING R/W ACQUIRED UNDER
PROJECT LOG-33-17.29, 1961

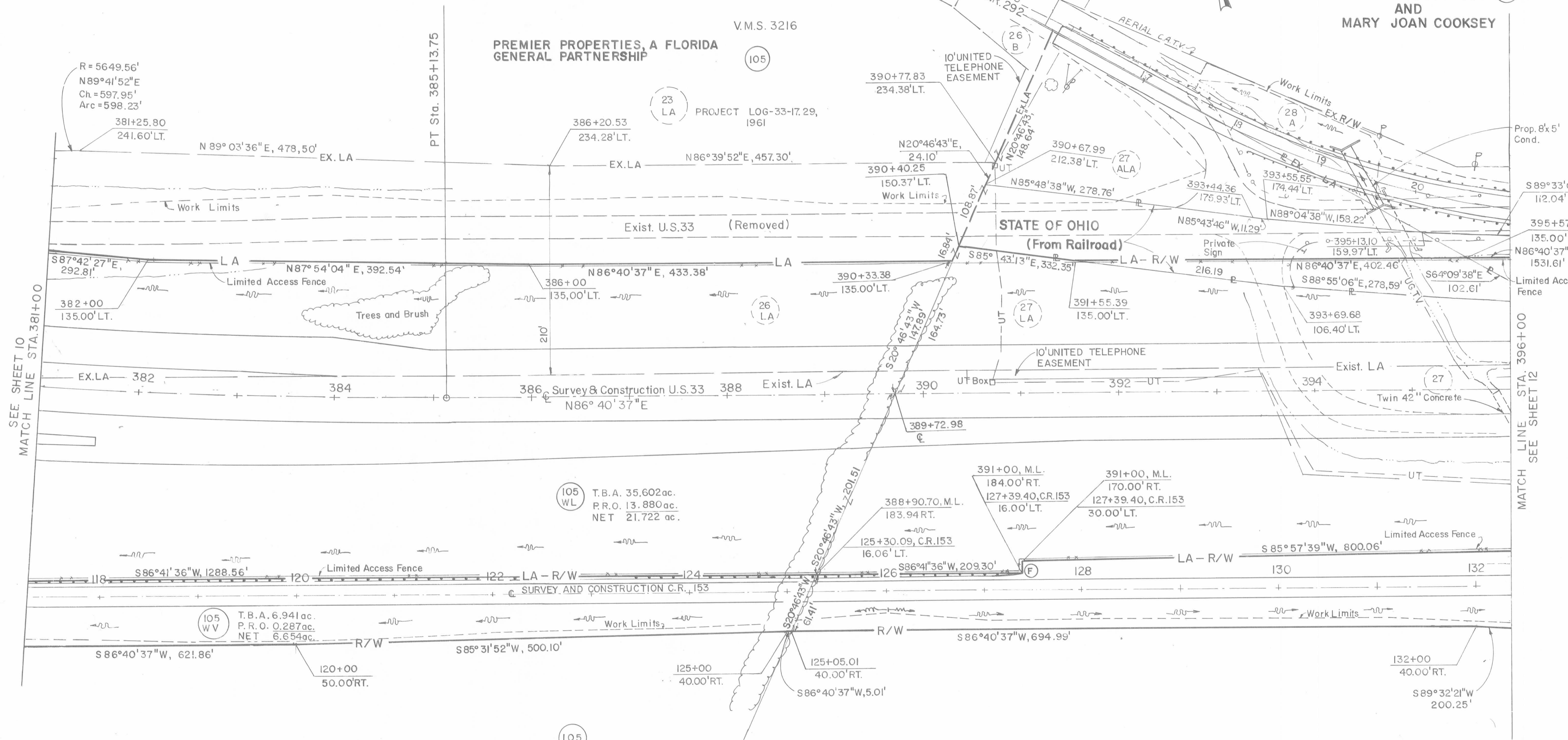
LOGAN COUNTY JEFFERSON TOWNSHIP V.M.S. 3216



FHWA REGION	STATE	PROJECT	CALC. DATE
5	OHIO		CHKD DATE

LOGAN COUNTY
LOG-33-21.51

LIMITED ACCESS R/W PLAN
WILLIAM H. COOKSEY AND
MARY JOAN COOKSEY



SEE SHEET 10
MATCH LINE STA. 381+00

MATCH LINE STA. 396+00
SEE SHEET 12

**PREMIER PROPERTIES, A FLORIDA
GENERAL PARTNERSHIP**

FOR LEGEND SEE SHEET 3

Line No.	Bearing	Distance
F	S 3° 19' 23" E	14.00'

PBR 3-93	PARCEL 105 P.R.O. CHANGE
1-93	COMPLETION DATE
REV. DATE	DESCRIPTION

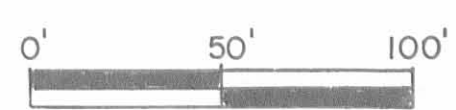
ATLAS BLUEPRINT 33213

EXISTING R/W ACQUIRED UNDER PROJECT LOG-33-17.29, 1961

LOGAN COUNTY JEFFERSON TOWNSHIP V.M.S. 3216

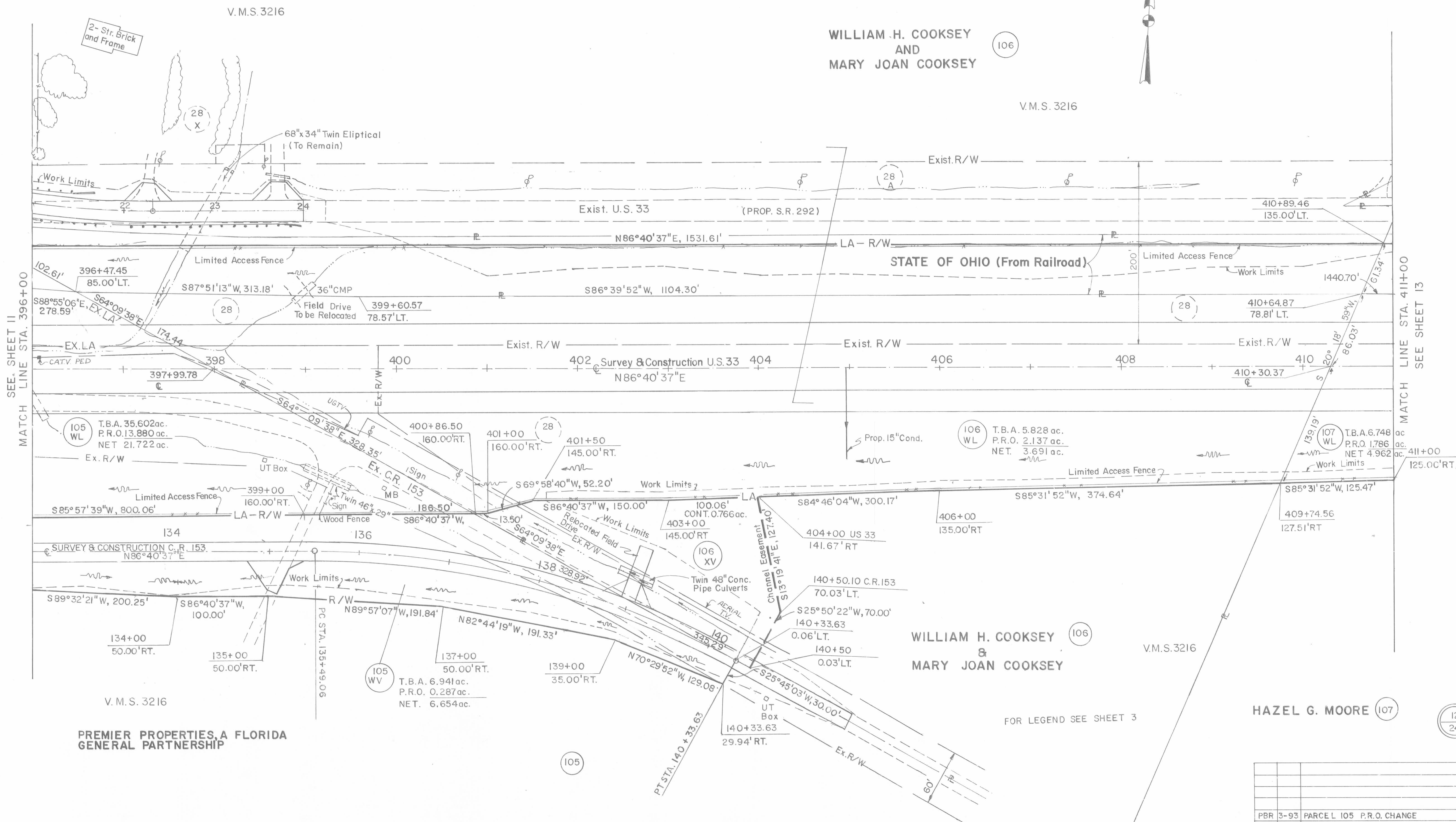
FHWA REGION	STATE	PROJECT	CALC. DATE
5	OHIO		
			CHKD DATE

LOGAN COUNTY
LOG-33-21.51



LIMITED ACCESS R/W PLAN

12
24



SEE SHEET II
MATCH LINE STA. 396+00

MATCH LINE STA. 411+00
SEE SHEET 13

PREMIER PROPERTIES, A FLORIDA
GENERAL PARTNERSHIP

WILLIAM H. COOKSEY &
MARY JOAN COOKSEY

HAZEL G. MOORE

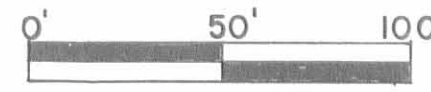
FOR LEGEND SEE SHEET 3

PBR 3-93	PARCEL 105	P.R.O. CHANGE
1-93	COMPLETION DATE	
REV. DATE	DESCRIPTION	

WILLIAM H. COOKSEY
AND
MARY JOAN COOKSEY

EXISTING R/W ACQUIRED UNDER
PROJECT LOG-33-17.29,1961

LOGAN COUNTY
JEFFERSON TOWNSHIP
V.M.S. 3216 & 9833



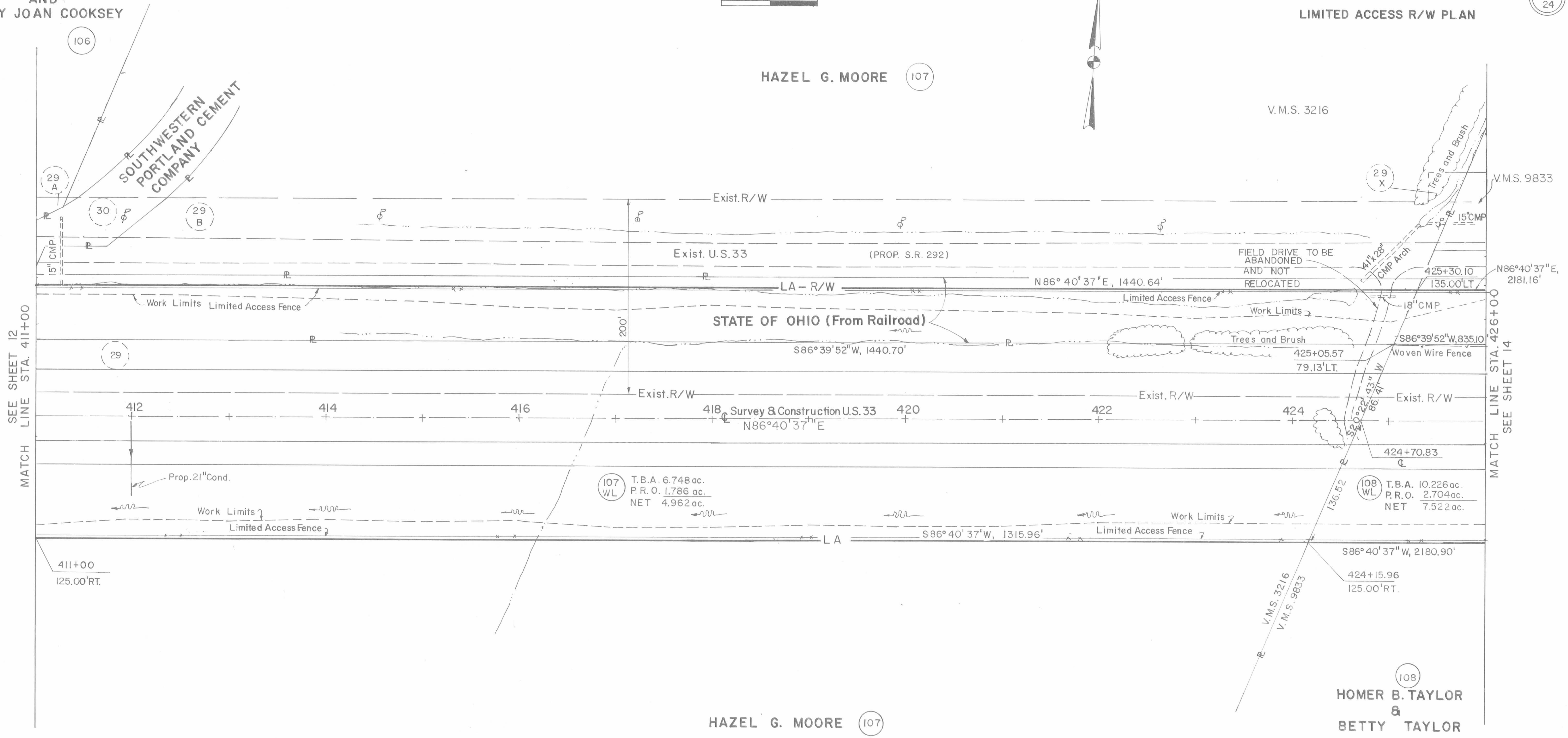
FHWA REGION	STATE	PROJECT	CALC. DATE
5	OHIO		CHKD DATE

LOGAN COUNTY
LOG-33-2.151

LIMITED ACCESS R/W PLAN



13
24



SEE SHEET 12
MATCH LINE STA. 411+00

MATCH LINE STA. 426+00
SEE SHEET 14

FOR LEGEND SEE SHEET 3

13
24

REV.	DATE	DESCRIPTION
PBR	3-93	ADDITIONAL LABELING ADDED
I-93		COMPLETION DATE

PAUL M. COSTELLO
AND
EDNA M. COSTELLO

LOGAN COUNTY
JEFFERSON TOWNSHIP
V.M.S. 4661 & 9833

FHWA REGION	STATE	PROJECT	CALC. DATE
5	OHIO		CHKD. DATE

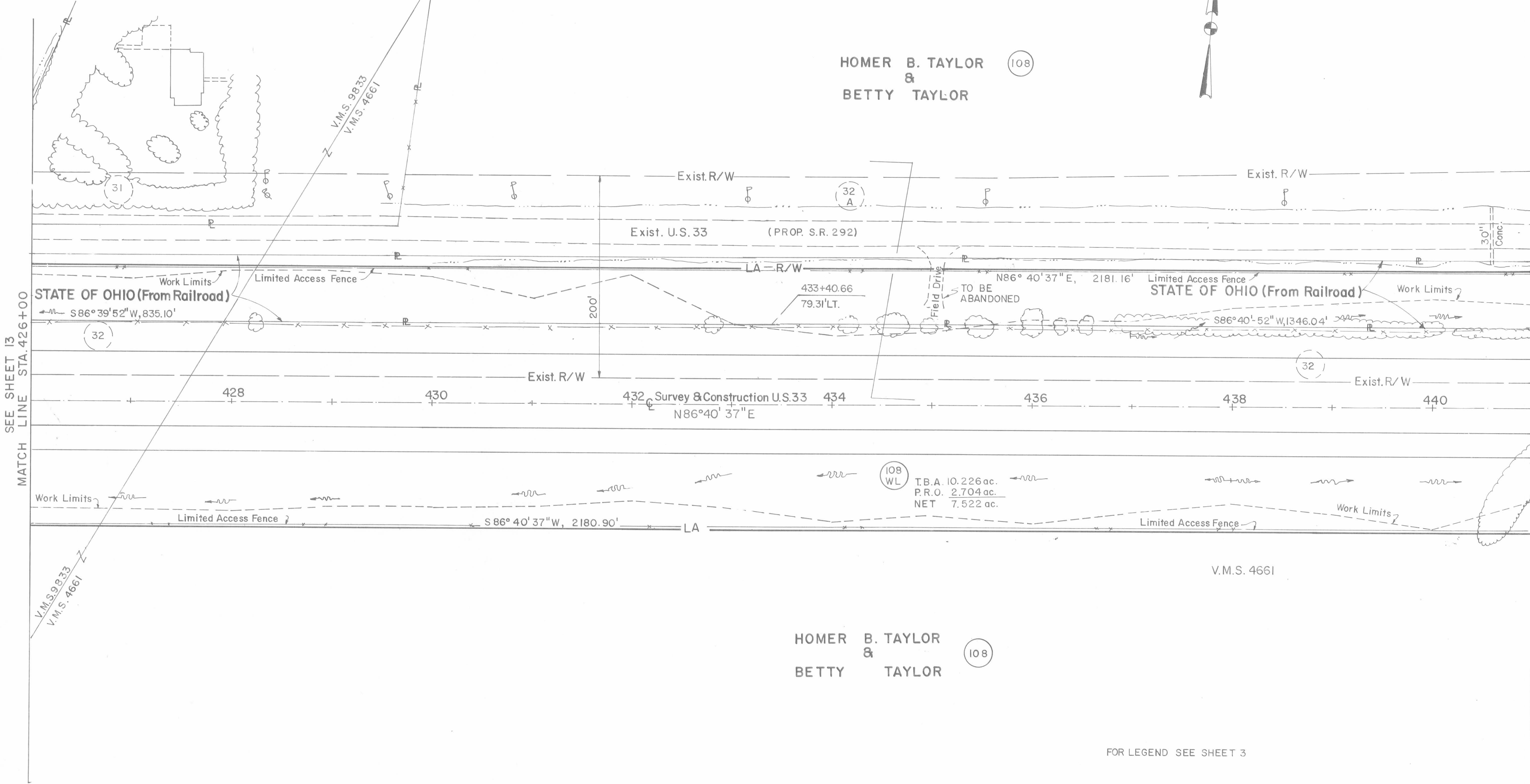
LOGAN COUNTY
LOG-33-21.51

LIMITED ACCESS R/W PLAN



HOMER B. TAYLOR (108)
&
BETTY TAYLOR

EXISTING R/W ACQUIRED
UNDER
PROJECT LOG-33-17.29, 1961



SEE SHEET 13
MATCH LINE STA. 426+00

MATCH LINE STA. 441+00
SEE SHEET 15

HOMER B. TAYLOR (108)
&
BETTY TAYLOR

(108 WL)
T.B.A. 10.226 ac.
P.R.O. 2.704 ac.
NET 7.522 ac.

FOR LEGEND SEE SHEET 3

REV.	DATE	DESCRIPTION
PBR	3-93	ADDITIONAL LABELING ADDED
	1-93	COMPLETION DATE

(14/24) (14/24) (14/24) (14/24)