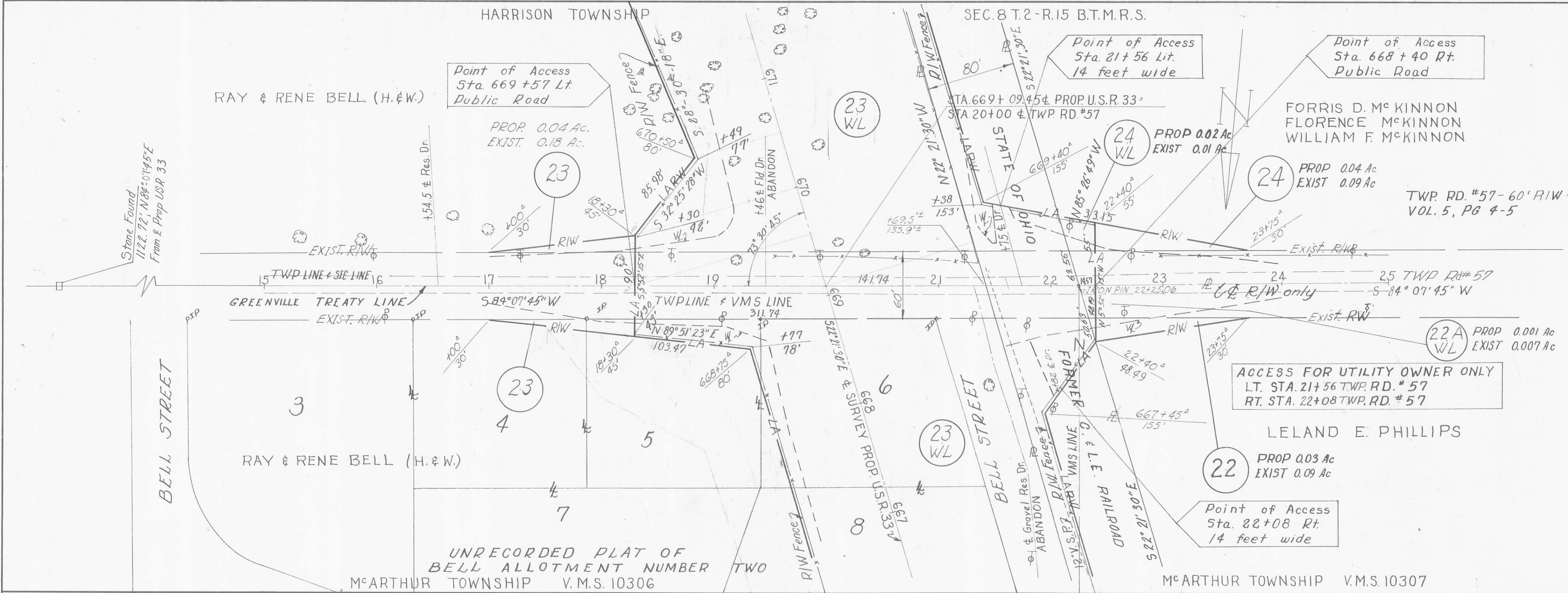


FED. RD. DIVISION	STATE	PROJECT	
2	OHIO	1965	

246
250

LOGAN COUNTY
LOG-33~10.85 PART I



UNRECORDED PLAT OF
BELL ALLOTMENT NUMBER TWO
McARTHUR TOWNSHIP V.M.S. 10306

McARTHUR TOWNSHIP V.M.S. 10307

REVISED
DRAWN 11-13-64
Scale - 1"=50'

HARRISON TWP.
SEC. 8 T. 2 - R. 15 B.T.M.R.S.

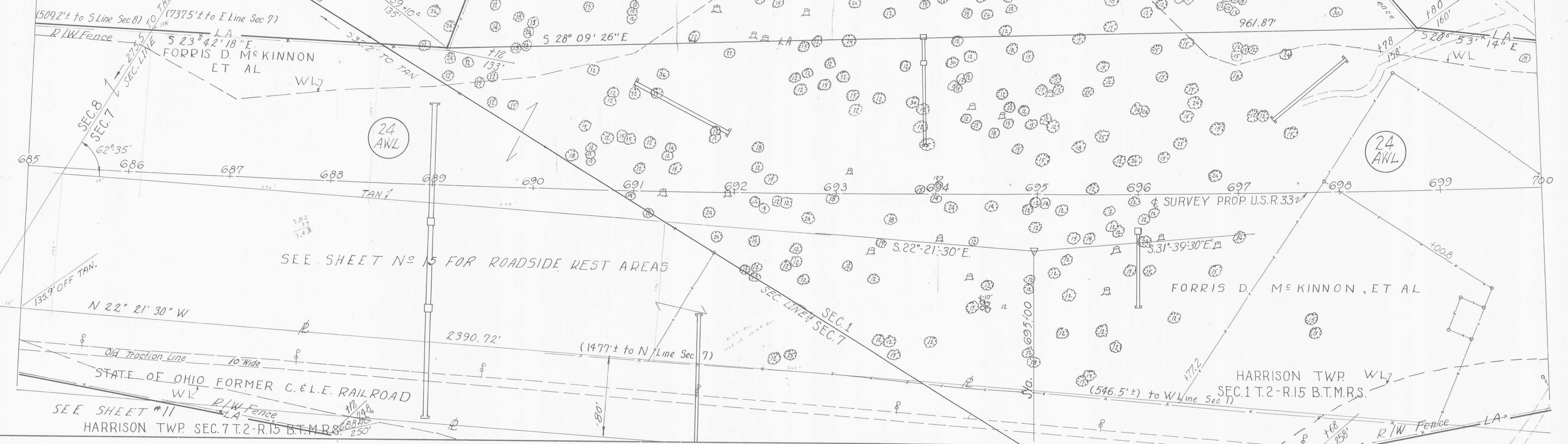
HARRISON TWP. SEC. 1 T. 2 - R. 15 B.T.M.R.S.

FED. RD. DIVISION	STATE	PROJECT	(247) (250)
2	OHIO	1965	

LOGAN COUNTY
LOG-33-10.85 PART I

CURVE DATA
 P.I. Sta. 695+00
 $\Delta = 9^{\circ}-18'14''$ PC = Sta. 681+01.93
 $D = 0^{\circ}-20'$ M.P. = Sta. 694+96.93
 $T = 1398.07'$ P.T. = Sta. 708+91.93
 $R = 17,188.74'$ L = 2790.00'
 $E = 56.58'$

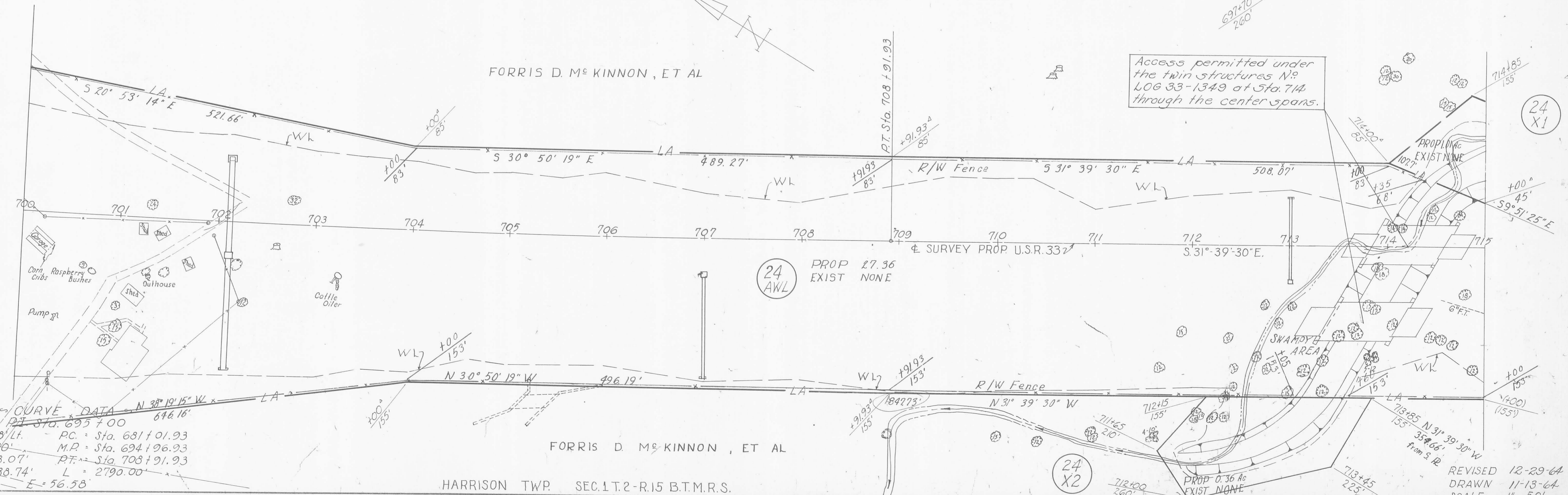
FORRIS D. M^{rs} KINNON ET AL



HARRISON TWP. SEC. 1 T. 2 - R. 15 B.T.M.R.S.

FORRIS D. M^{rs} KINNON, ET AL

Access permitted under the twin structures N° LOG 33-1349 at Sta. 714 through the center spans.



FORRIS D. M^{rs} KINNON, ET AL

HARRISON TWP. SEC. 1 T. 2 - R. 15 B.T.M.R.S.

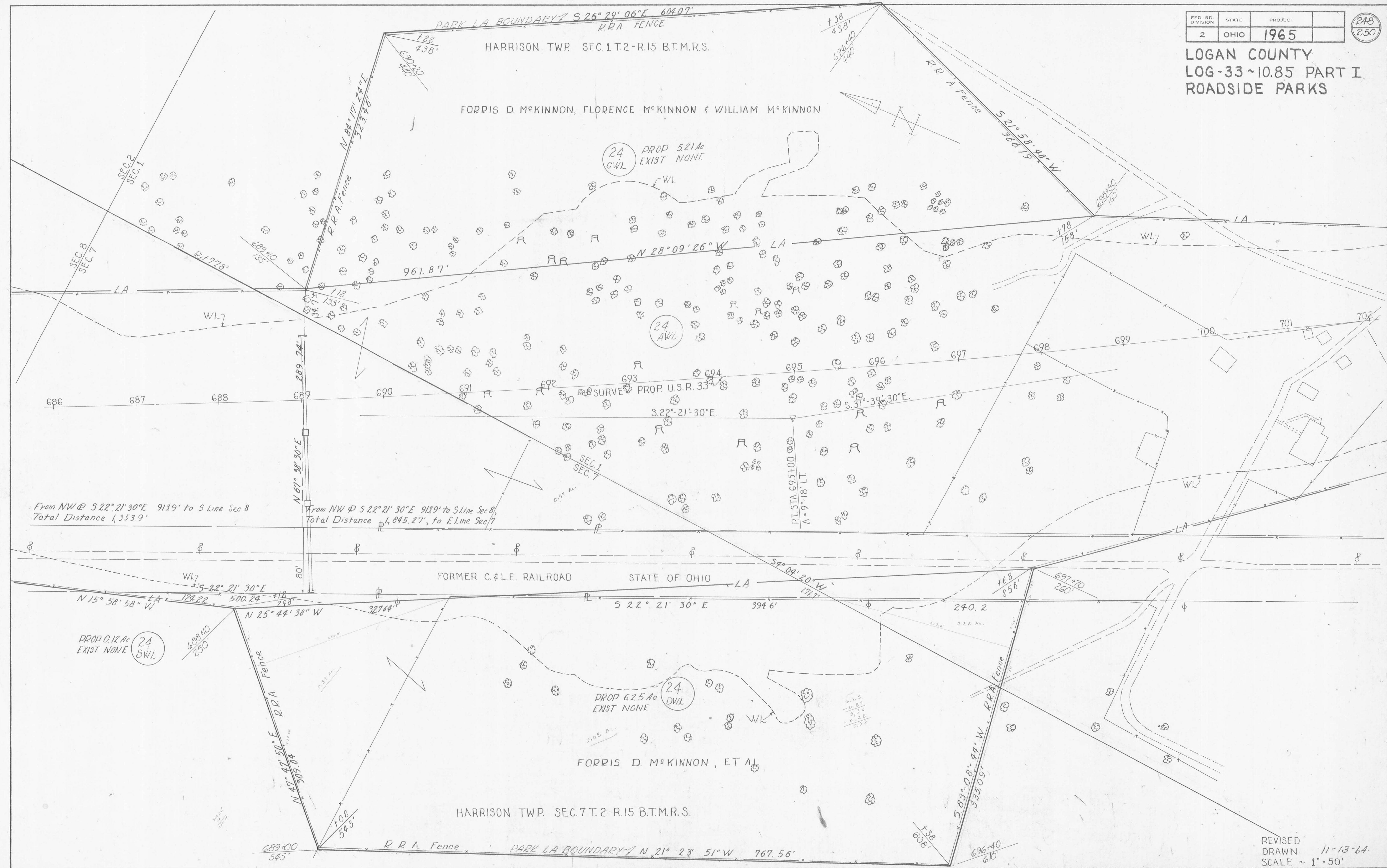
CURVE DATA
 P.I. Sta. 695+00
 $\Delta = 9^{\circ}-18'14''$ PC = Sta. 681+01.93
 $D = 0^{\circ}-20'$ M.P. = Sta. 694+96.93
 $T = 1398.07'$ P.T. = Sta. 708+91.93
 $R = 17,188.74'$ L = 2790.00'
 $E = 56.58'$

REVISED 12-29-64
DRAWN 11-13-64
SCALE - 1" = 50'

FED. RD. DIVISION	STATE	PROJECT	
2	OHIO	1965	

248
250

LOGAN COUNTY
LOG-33~10.85 PART I
ROADSIDE PARKS



From NW @ S 22° 21' 30" E 913.9' to S Line Sec 8
Total Distance 1,353.9'

From NW @ S 22° 21' 30" E 913.9' to S Line Sec 8,
Total Distance 1,845.27', to E Line Sec 7

PROP. 0.12 Ac
EXIST NONE
24
BWL

PROP. 625 Ac
EXIST NONE
24
DWL

6.75
0.83
9.36
0.28
5.08

REVISED
DRAWN 11-13-64
SCALE ~ 1" = 50'

FED. RD. DIVISION	STATE	PROJECT
2	OHIO	1965

250
250

LOGAN COUNTY
LOG ~ 33-10.85 PART I

HARRISON TWP SEC. 1 T.2-R.15 B

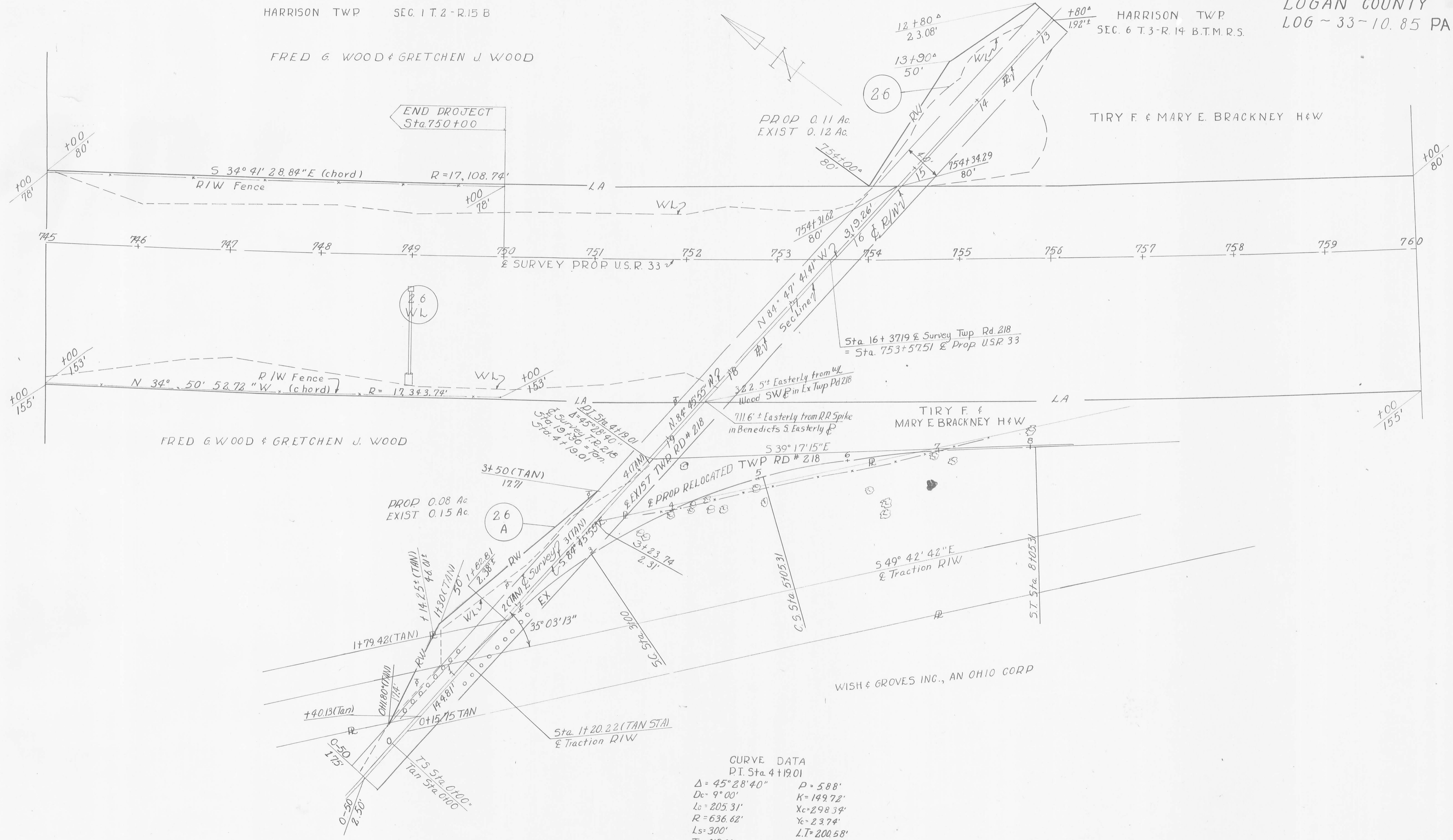
HARRISON TWP
SEC. 6 T.3-R.14 B.T.M.R.S.

FRED G. WOOD & GRETCHEN J. WOOD

TIRY F & MARY E. BRACKNEY H & W

FRED G. WOOD & GRETCHEN J. WOOD

WISH & GROVES INC., AN OHIO CORP



CURVE DATA
PI Sta 4+19.01
 $\Delta = 45^\circ 28' 40''$ $P = 588'$
 $D_c = 9^\circ 00'$ $K = 149.72'$
 $L_c = 205.31'$ $X_c = 298.39'$
 $R = 636.62'$ $Y_c = 23.74'$
 $L_s = 300'$ $L.T. = 200.58'$
 $T_s = 419.01'$ $S.T. = 100.53'$
 $E_s = 60.04'$ $L.C. = 299.26'$
 $O_s = 13^\circ 31'$

REVISED
DRAWN 11-13-64
SCALE ~ 1" = 50'