

LAKE TWP. V.M.S. 3317

FED. RD. DIVISION	STATE	PROJECT	138
2	OHIO		141

PAUL R. & LUCY F. ROBERTS (H.&W.)

RICHARD H. & IRIS M. CRANDALL (H.&W.)

LOGAN COUNTY
 LOG-47DA ~ (0.56)
 LOG-47 ~ (14.16-14.57)
 LIMITED ACCESS

MARY M. HERTENSTEIN

PROP. 0.42 Ac.
 EXIST. NONE

72 WL

69 WL
 PROP. 1.51 Ac.
 EXIST. NONE

70 WL
 PROP. 0.97 Ac.
 EXIST. NONE

CYRIL &
 EDITH STEVENS
 (H.&W.)

71 WL
 PROP. 1.71 Ac.
 EXIST. 0.10 Ac.

68 WL
 PROP. 0.51 Ac.
 EXIST. NONE

CURVE DATA
 P.I. STA. 795+72.79
 $\Delta = 45^\circ 25' 08''$ RT.
 $D_c = 3^\circ 00'$ $X_c = 299.81'$
 $L_s = 300'$ $Y_c = 7.85'$
 $T_s = 950.09'$ $\Delta_c = 36^\circ 25' 08''$
 $E_s = 162.63'$ $L_c = 1213.96'$
 $O_s = 4^\circ 30'$ $R_c = 1909.86'$

EMMA L. SHORT

EARL JR. & MARY LOUISE FOUT (H.&W.)

HARRY E. BOYER

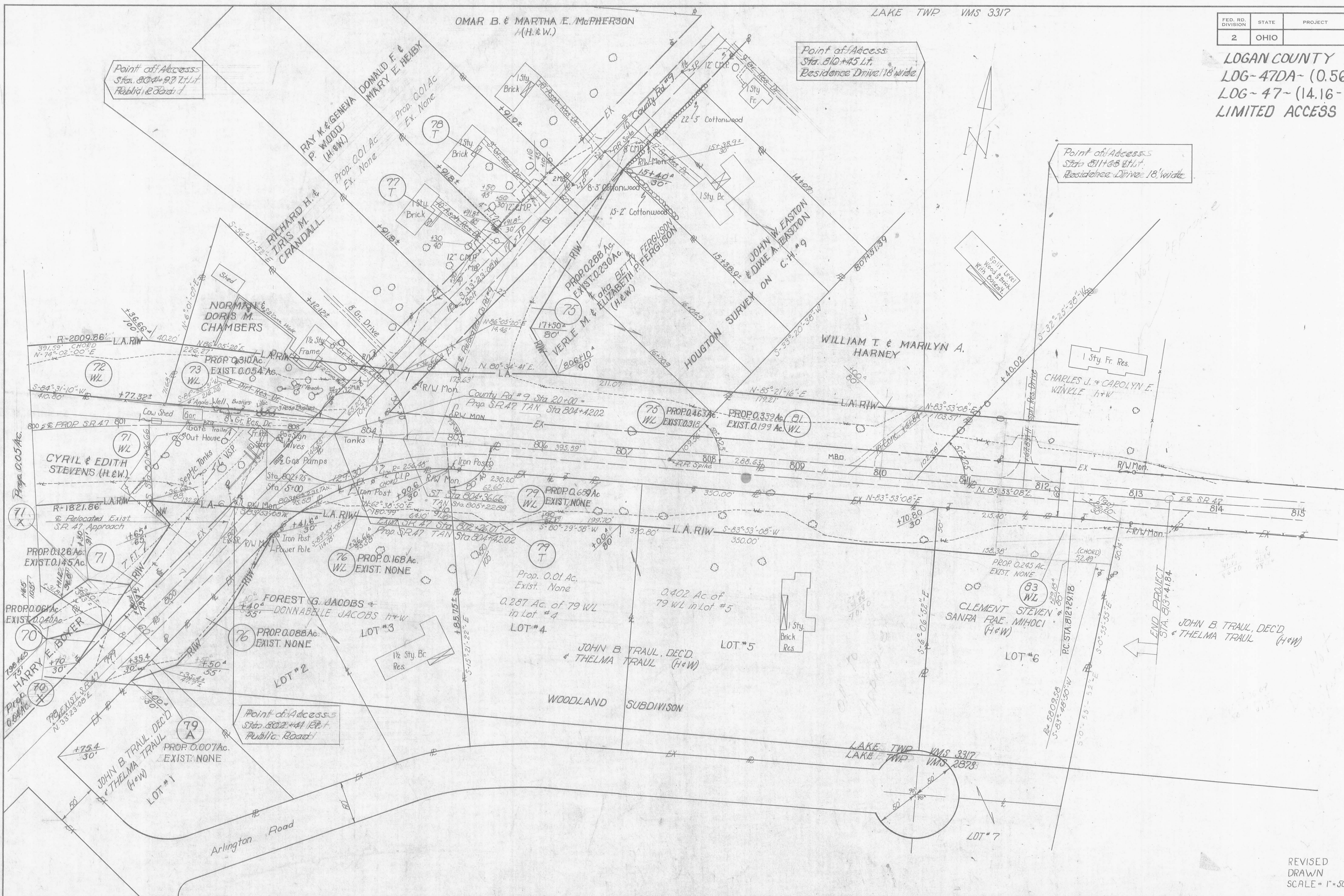
LAKE TWP. V.M.S. 2873

REVISED
 DRAWN
 SCALE ~ 1" = 50'

FED. RD. DIVISION	STATE	PROJECT	
2	OHIO		

139
141

LOGAN COUNTY
 LOG-47DA- (0.56)
 LOG-47- (14.16-14.57)
 LIMITED ACCESS



REVISED
 DRAWN
 SCALE = 1" = 50'

FED. RD. DIVISION	STATE	PROJECT	
2	OHIO		

140
14.1

D. RUSSELL & JUANITA HUBER

HELEN GLADYS BEATY

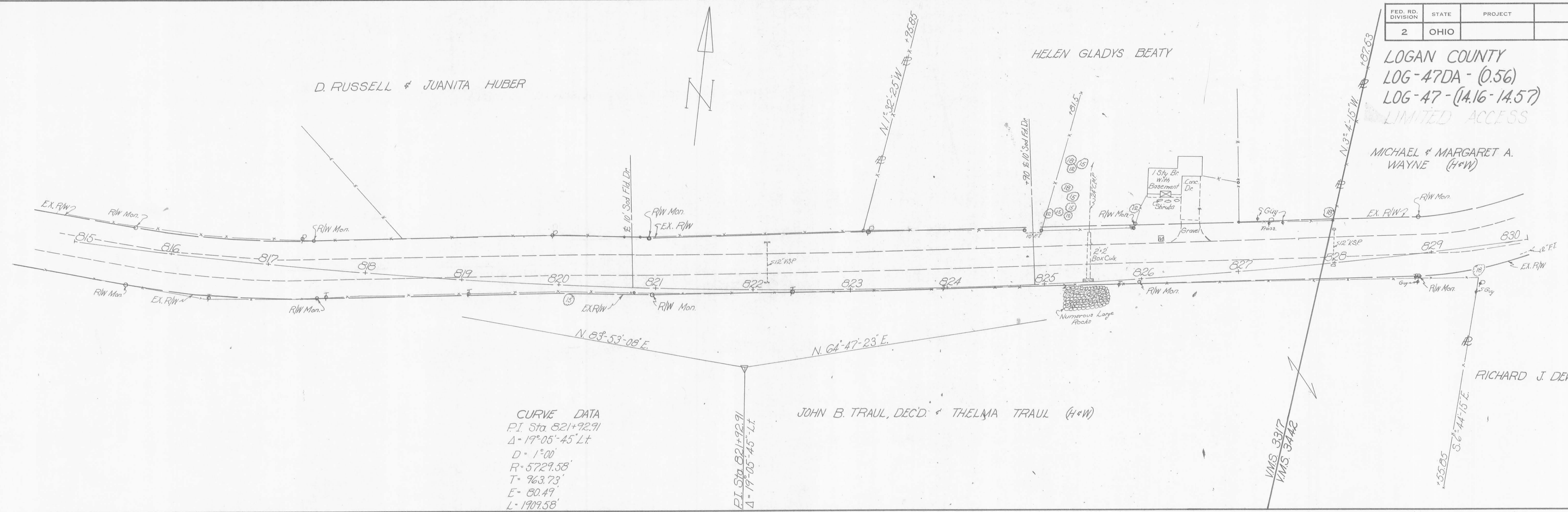
LOGAN COUNTY
LOG-47DA - (0.56)
LOG-47 - (14.16-14.57)
LIMITED ACCESS

MICHAEL & MARGARET A. WAYNE (H&W)

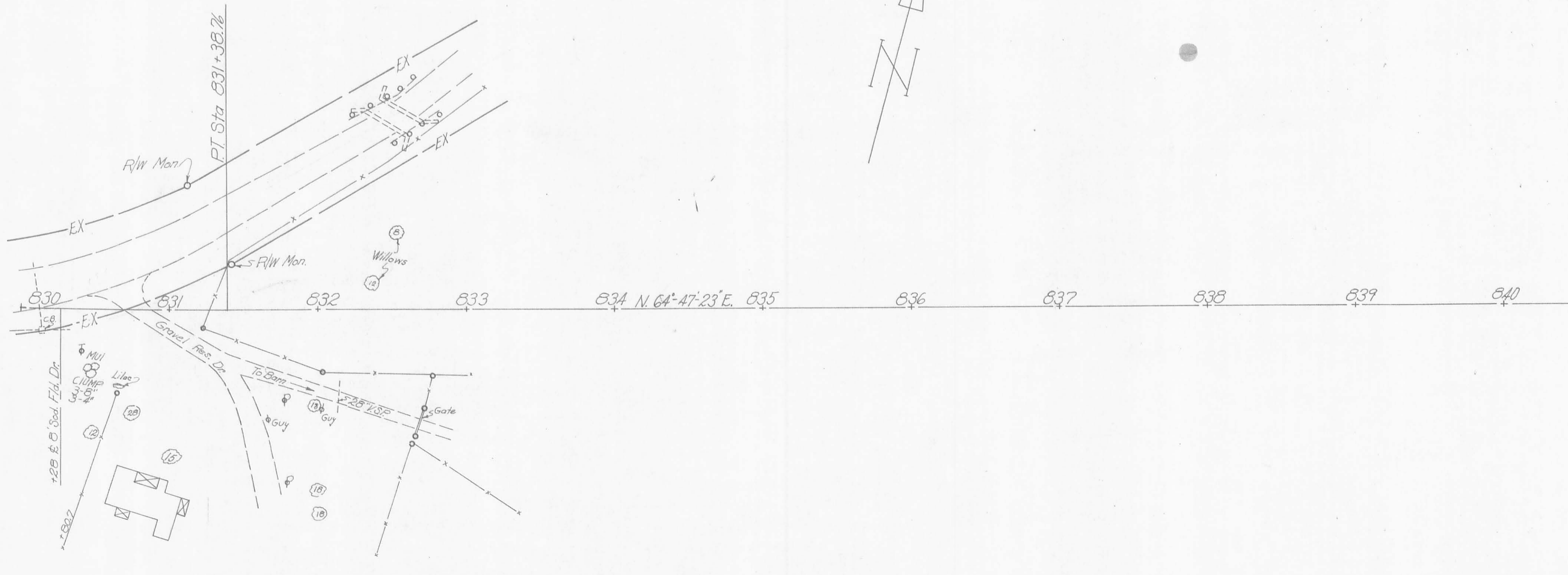
RICHARD J. DEVINE

JOHN B. TRAU, DEC'D & THELMA TRAU (H&W)

CURVE DATA
P.I. Sta. 821+92.91
 $\Delta = 17^{\circ}05'45''$ Lt
D = 1°00'
R = 5729.58'
T = 963.73'
E = 80.49'
L = 1909.58'



MICHAEL & MARGARET A. WAYNE (H&W)

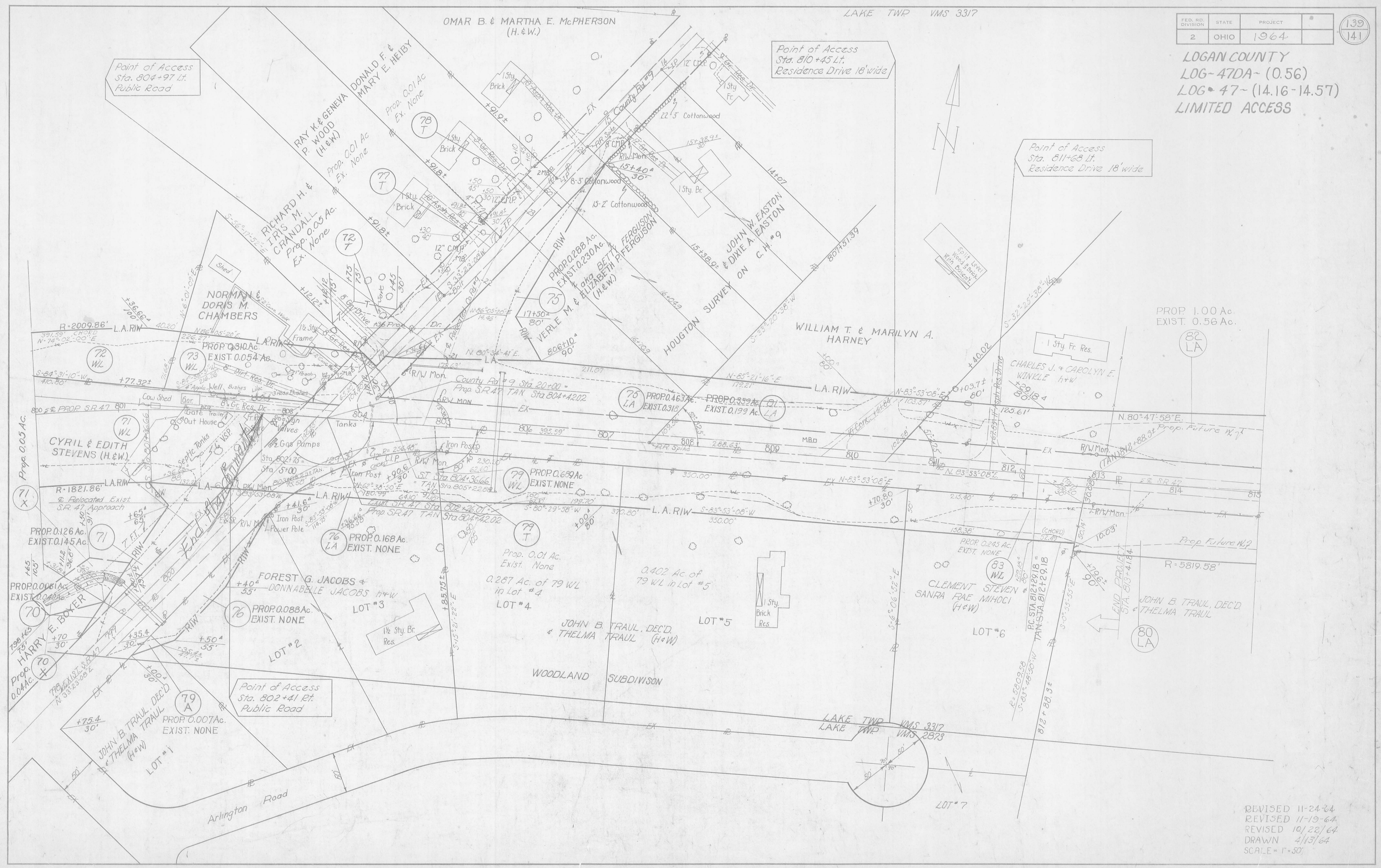


RICHARD J. DEVINE

REVISED
DRAWN
SCALE ~ 1" = 50'

FED. RD. DIVISION	STATE	PROJECT	139
2	OHIO	1964	141

LOGAN COUNTY
 LOG-47DA- (0.56)
 LOG-47- (14.16-14.57)
 LIMITED ACCESS

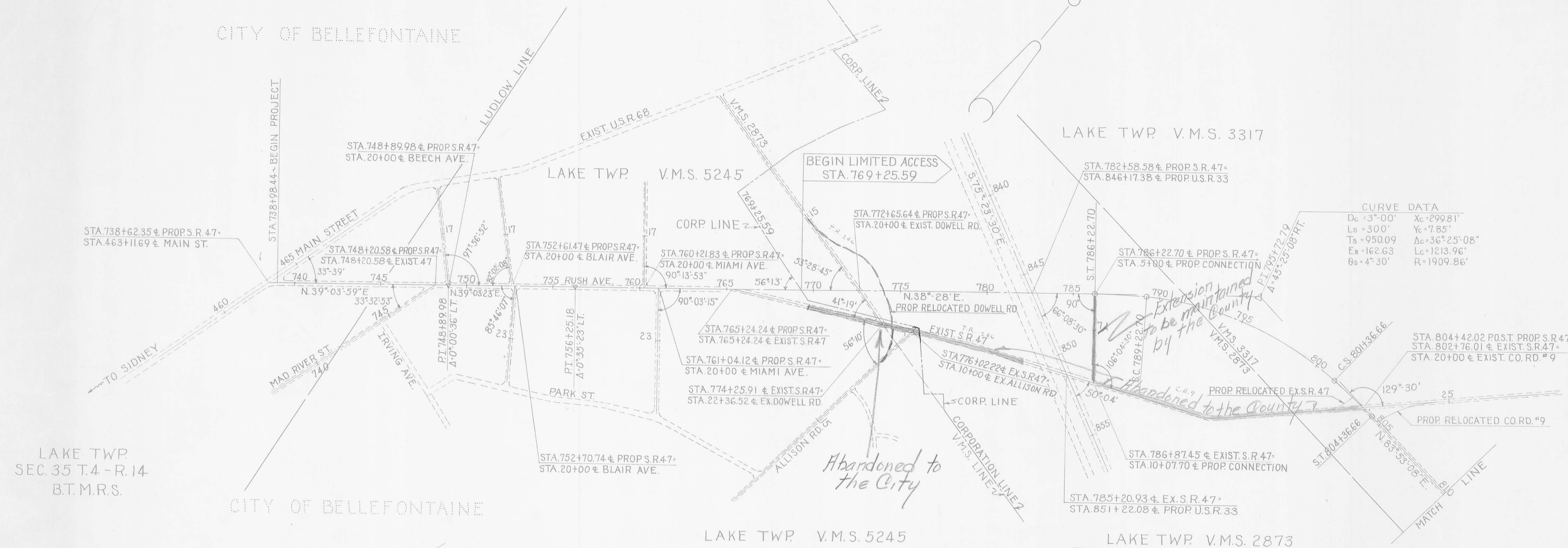
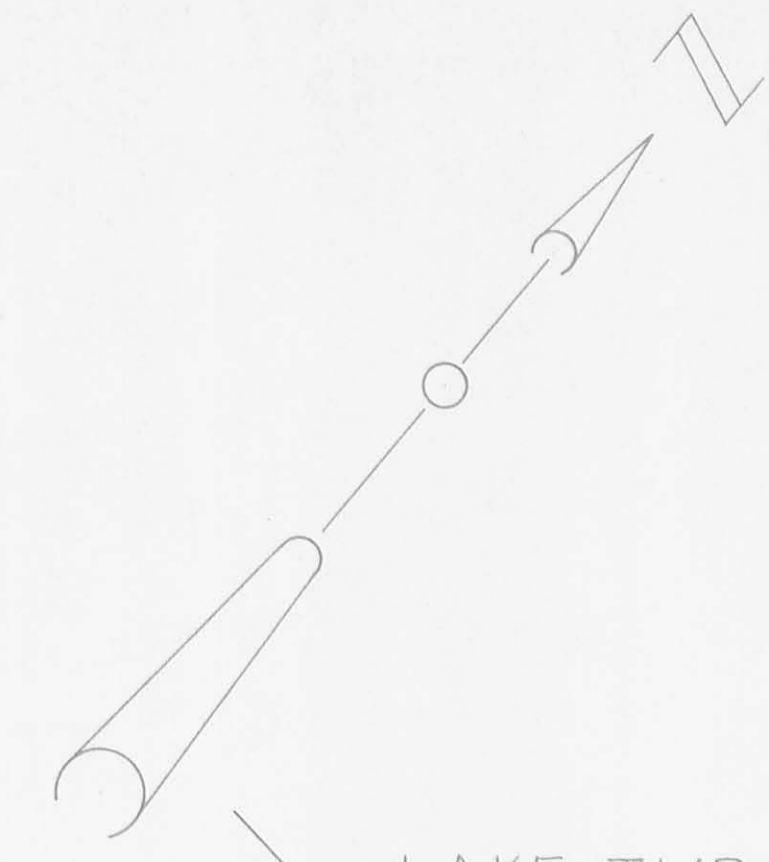


REVISED 11-24-64
 REVISED 11-19-64
 REVISED 10/22/64
 DRAWN 4/13/64
 SCALE = 1" = 50'

LOCATION PLAN

FED. RD. DIVISION	STATE	PROJECT	1
2	OHIO	1964	.1

LOGAN COUNTY
 LOG-47DA~(0.56)
 LOG-47~(14.16-14.57)
 LIMITED ACCESS



CURVE DATA

Dc = 3°00'	Xc = 299.81'
Ls = 300'	Yc = 7.85'
Ts = 950.09	Δc = 36°25'08"
Es = 162.63	Lc = 1213.96'
Os = 4°30'	R = 1909.86'

LAKE TWP
 SEC. 35 T.4 - R.14
 B.T.M.R.S.

Abandoned to the City

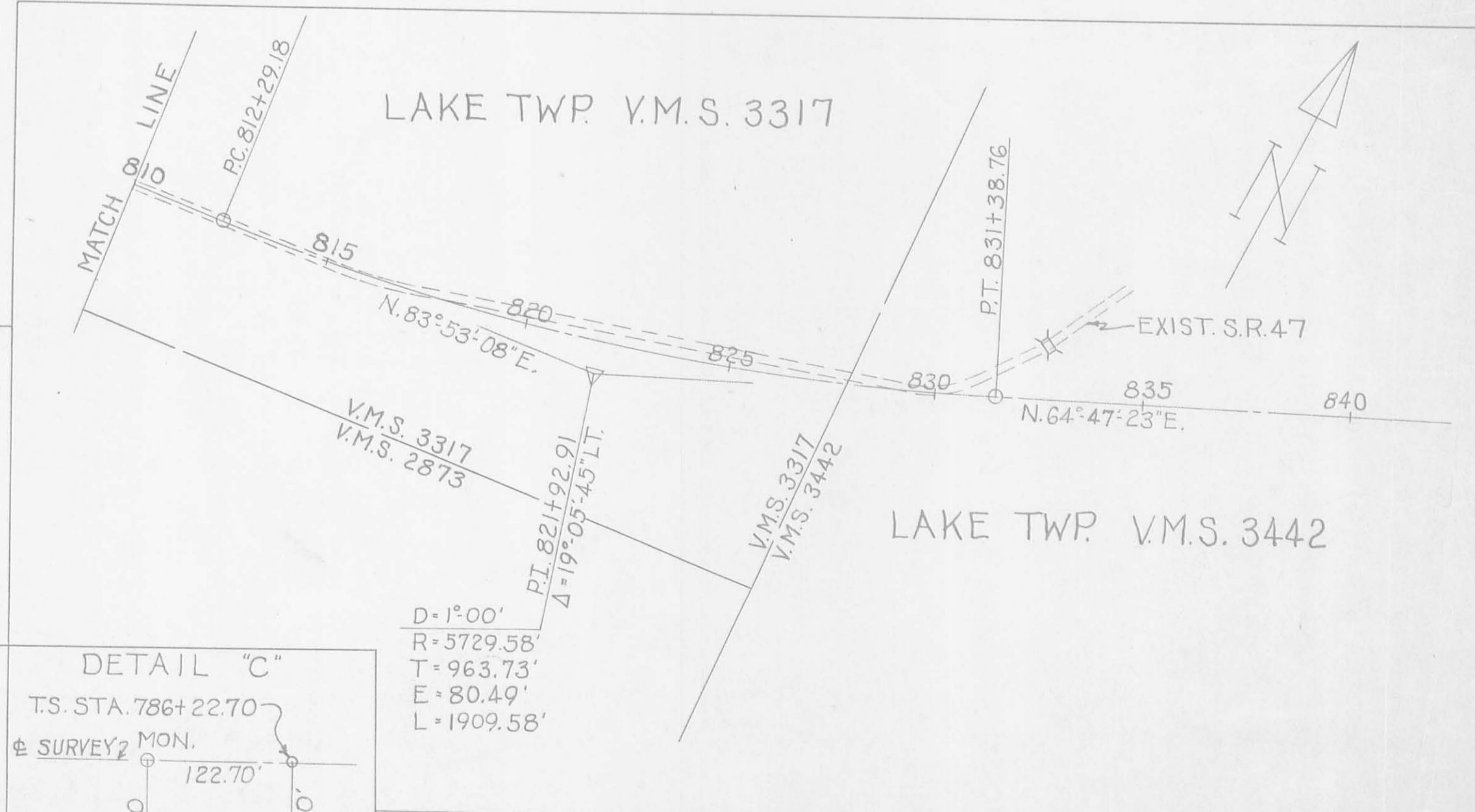
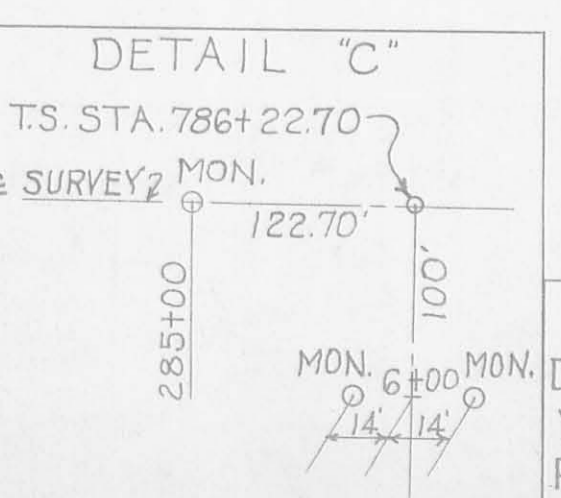
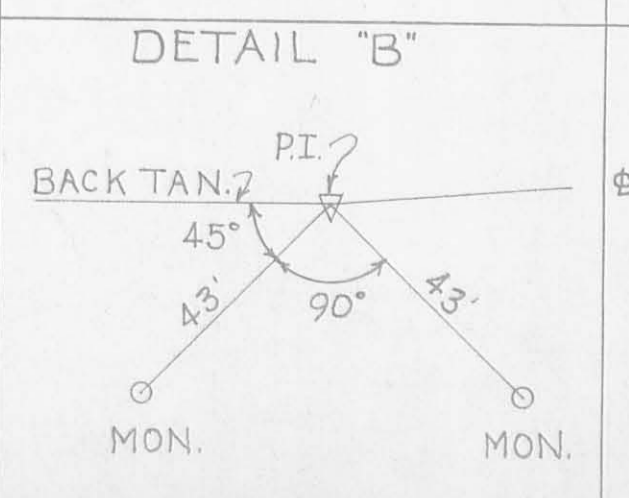
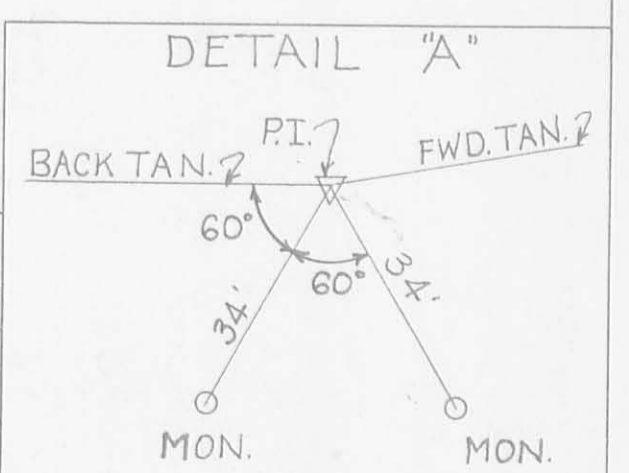
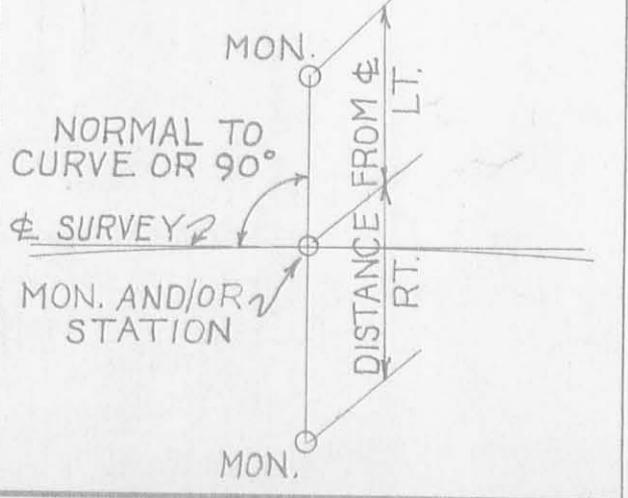
Extension to be maintained by the County

MONUMENTS SET BY 196

☉ REFERENCE POINT MONUMENTS TO BE SET

STATION	DISTANCE FROM	STATION	DISTANCE FROM	STATION	DISTANCE FROM	STATION	DISTANCE FROM	STATION	DISTANCE FROM
	LT. RT.		LT. RT.		LT. RT.		LT. RT.		LT. RT.
742+00	28.5' 28.5'	M.P.795+29.68	P.O.C.	EXIST. DOWELL ROAD	13+00	65'	—	6+00	14 14
P.I.748+89.98	SEE DETAIL 'A'	C.S.801+36.66	"	PROP. APPROACH ROAD	13+45	—	30	9+00	" "
753+00	29.5' 29.5'	S.T.804+36.66	P.O.T.	EXIST. CO. RD. #9	15+30	30	—	17+50	80
P.I.756+25.18	SEE DETAIL 'B'	807+00	"	EXIST. S.R.47 AT PROP. STA. 804+42.02	16+20	—	30'	798+70	30
762+00	29.5' 29.5'			EXIST. ALLISON ROAD	799+00	—	30	800+40	—
770+00	P.O.T.	MON. AHEAD TO BE SET		EXIST. CO. RD. #9	800+65	65	—		
777+00	"	ON NEXT PROJECT							
785+00	"								
T.S.786+22.70	SEE DETAIL 'C'								
S.C.789+22.70	P.O.C.								

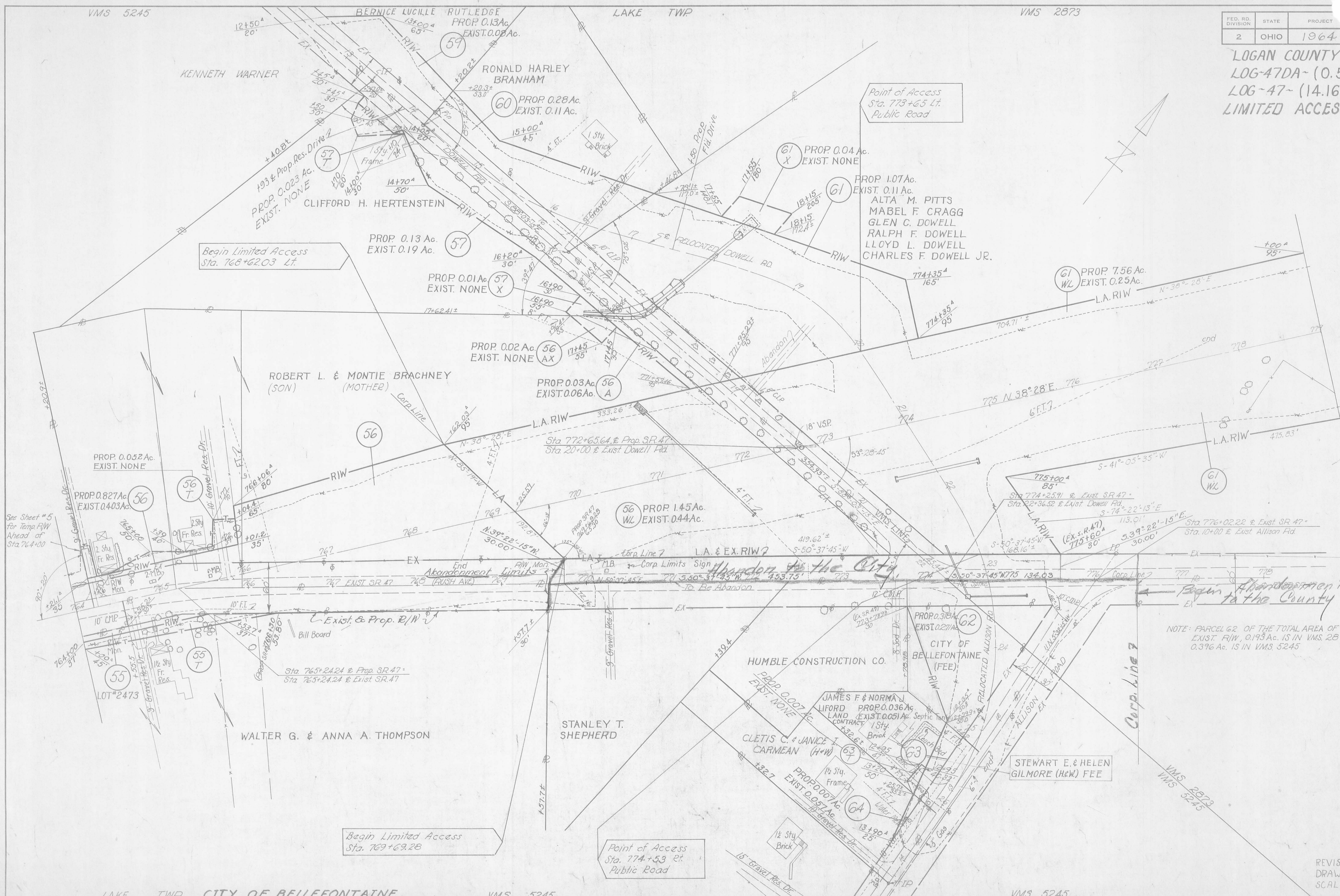
TYPICAL DETAIL FOR LOCATION OF ☉ MONUMENTS
 ☉ REFERENCE POINTS TO BE SET. FOR STA. & DISTANCE LT. & RT. SEE TABLE LEFT.



RECORDED	APPROVED
DATE 3-9-64	DATE <i>Geo. M. Bowen</i>
VOL. 1	RIGHT-OF-WAY ENGINEER DIVISION N°7
PAGE 23	REGISTERED SURVEYOR N° 3128

FED. RD. DIVISION	STATE	PROJECT
2	OHIO	1964

LOGAN COUNTY
 LOG-47DA- (0.56)
 LOG-47- (14.16-14.57)
 LIMITED ACCESS

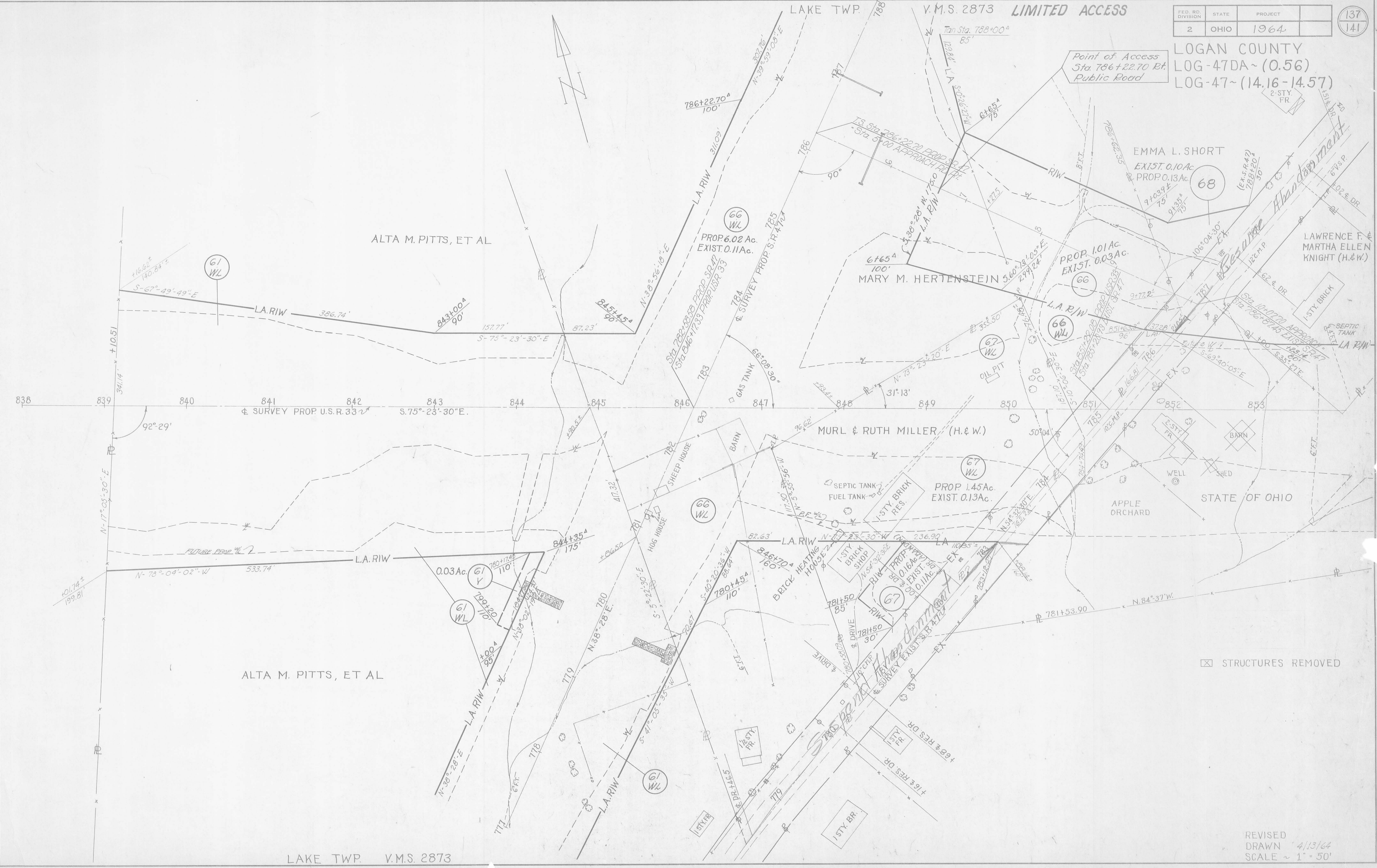


NOTE: PARCEL 62 OF THE TOTAL AREA OF PROP. & EXIST. R/W, 0.193 Ac. IS IN VMS 2873 & 0.376 Ac. IS IN VMS 5245

FED. RD. DIVISION	STATE	PROJECT	137
2	OHIO	1964	141

LOGAN COUNTY
 LOG-47DA~(0.56)
 LOG-47~(14.16-14.57)

Point of Access
 Sta. 786+22.70 Rt.
 Public Road



☒ STRUCTURES REMOVED

REVISED
 DRAWN 4/13/64
 SCALE ~ 1" = 50'