

L-42

● INDICATES CONCRETE RIGHT OF WAY POSTS.

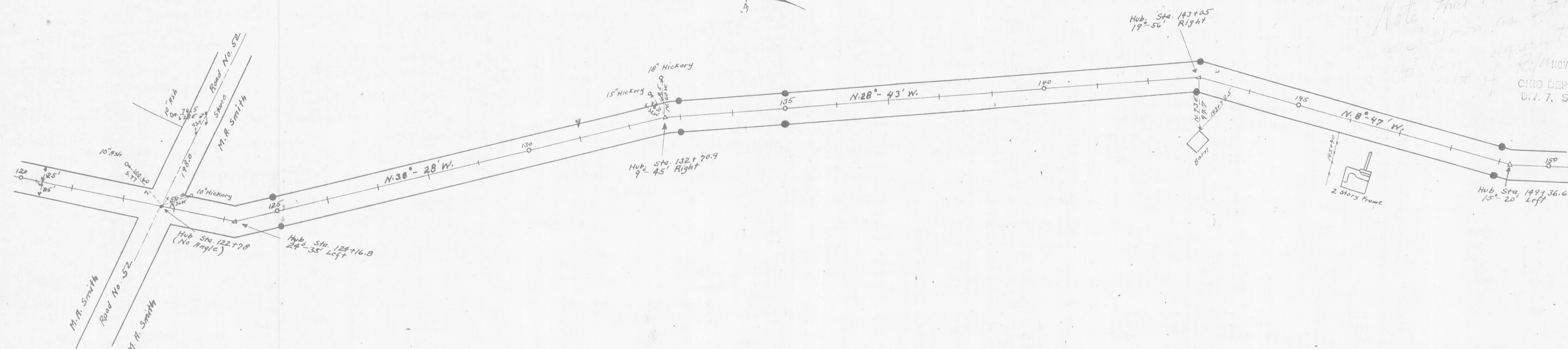
ROAD NO. 54
STOKES TOWNSHIP
LOGAN COUNTY

3
5

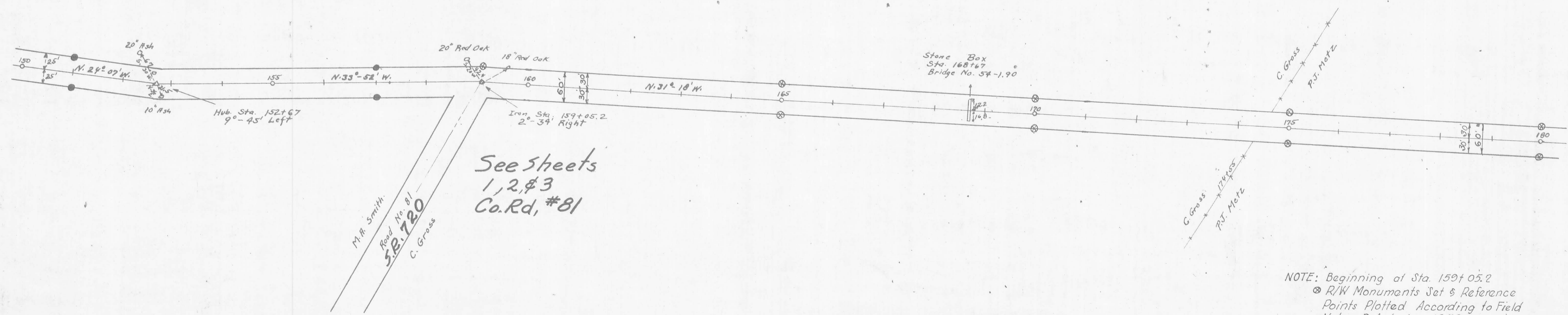
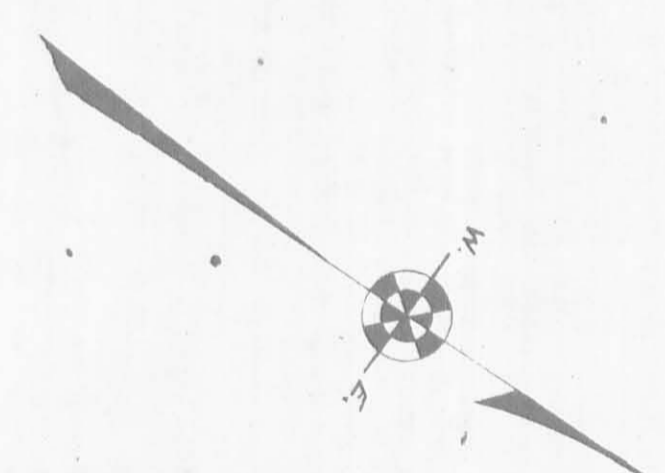
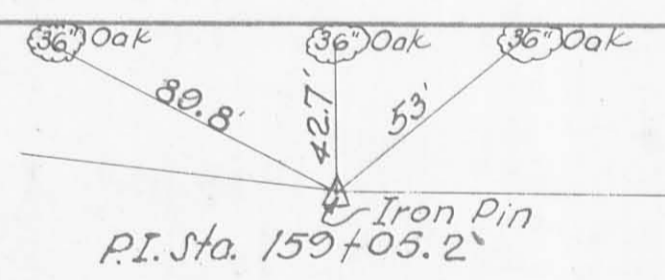
SH 932 Sec. 1
S.R. 720

Note that R/W Monuments
are shown on sheet 504
and are not to be furnished
part of R/W
NOV 20 1962
OHIO DEPT. HIGHWAYS
DIV. 7, SIDNEY, OHIO

ISSUED



Field Notes in Logan County
Surveyors Book 559



See sheets
1, 2, & 3
Co. Rd. #81

NOTE: Beginning at Sta. 159+05.2
● R/W Monuments Set & Reference
Points Plotted According to Field
Notes Dated Jan. 1959

L-42

1367
L-42

X-54

SH 932 Sec. L
SR 720

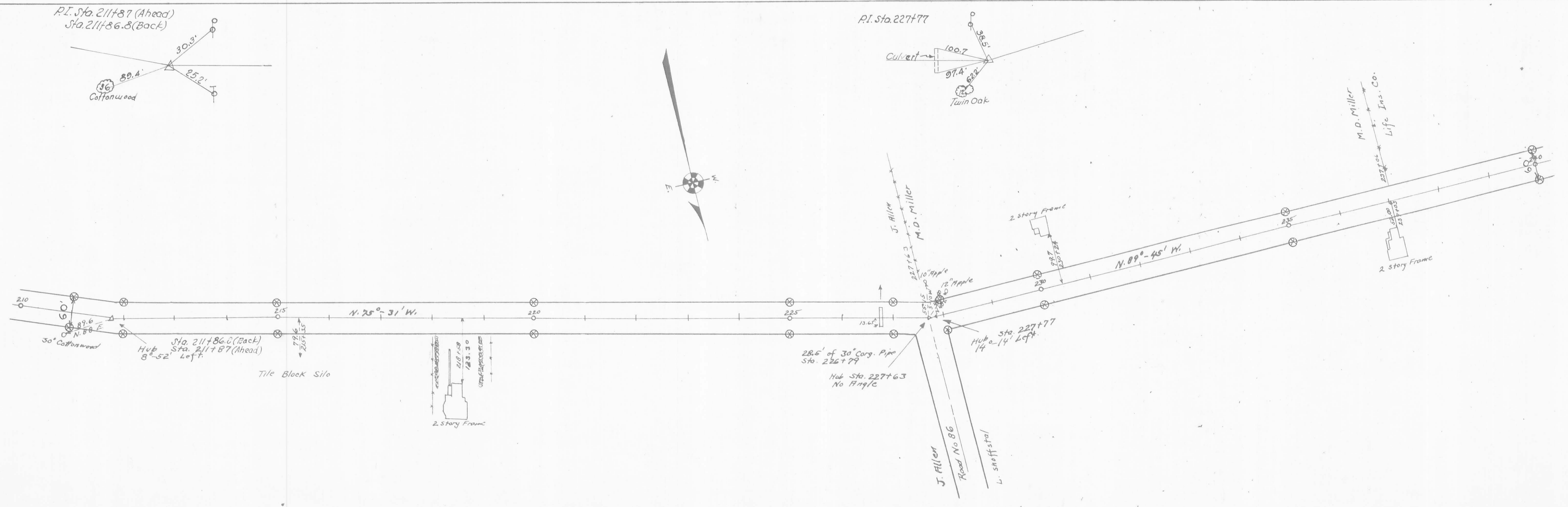
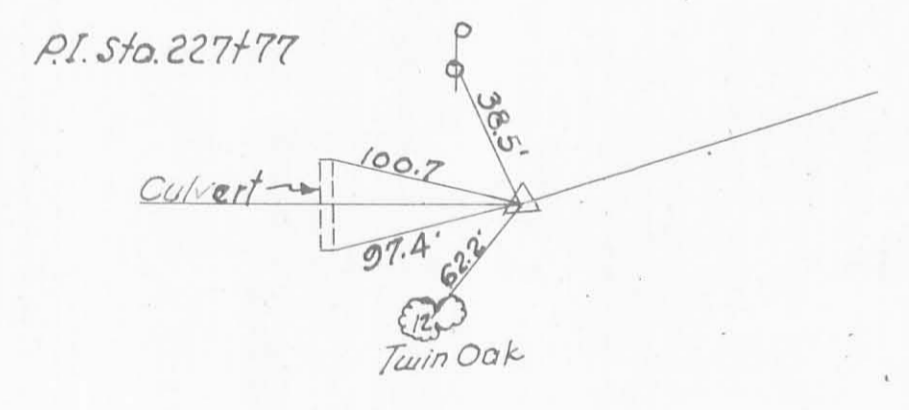
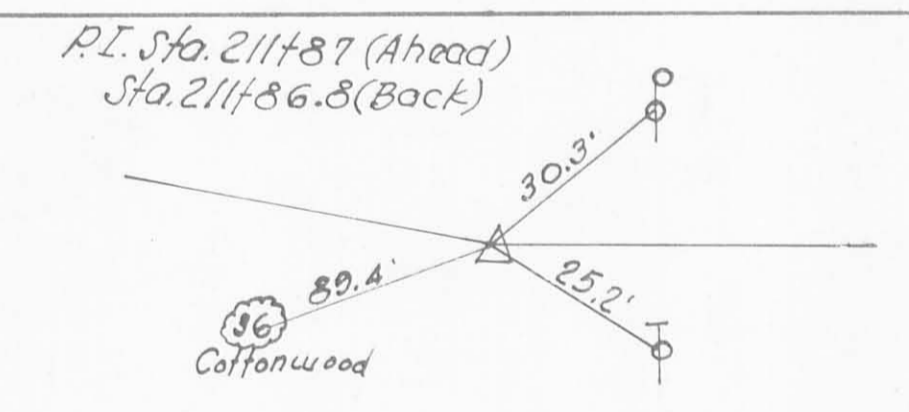
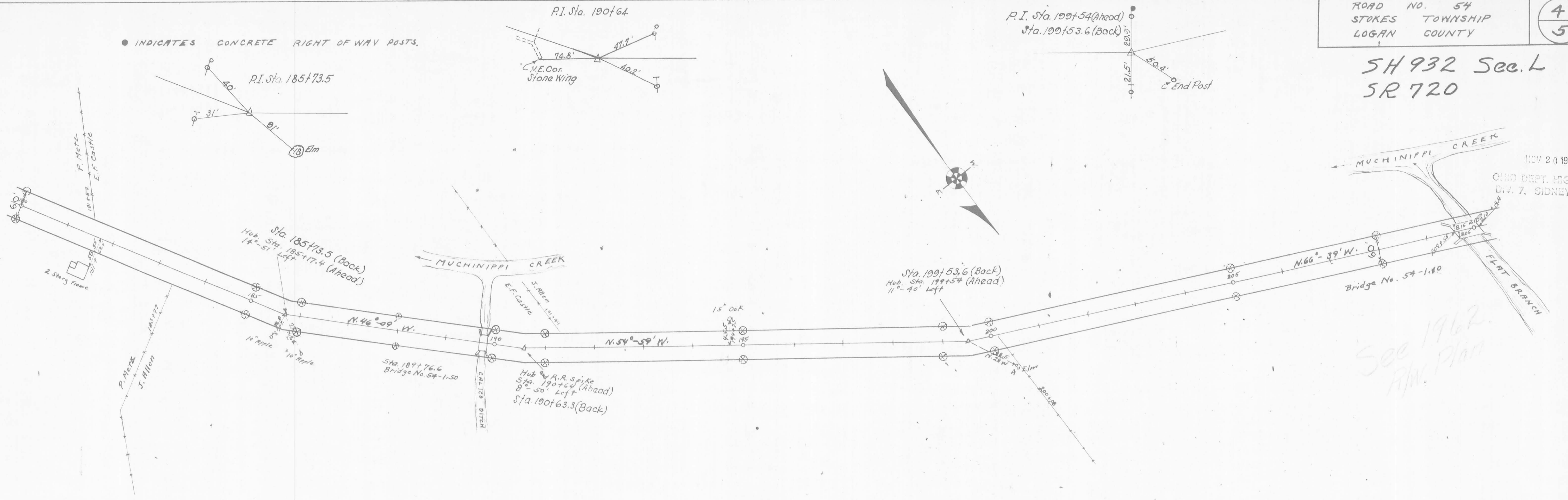
ISSUED

NOV 20 1962

OHIO DEPT. HIGHWAYS
DIV. 7, SIDNEY, OHIO

See 1962
Plan

● INDICATES CONCRETE RIGHT OF WAY POSTS.



Field Notes in Logan County
Surveyors Book 537

SH 932 Sec. L
SR 720

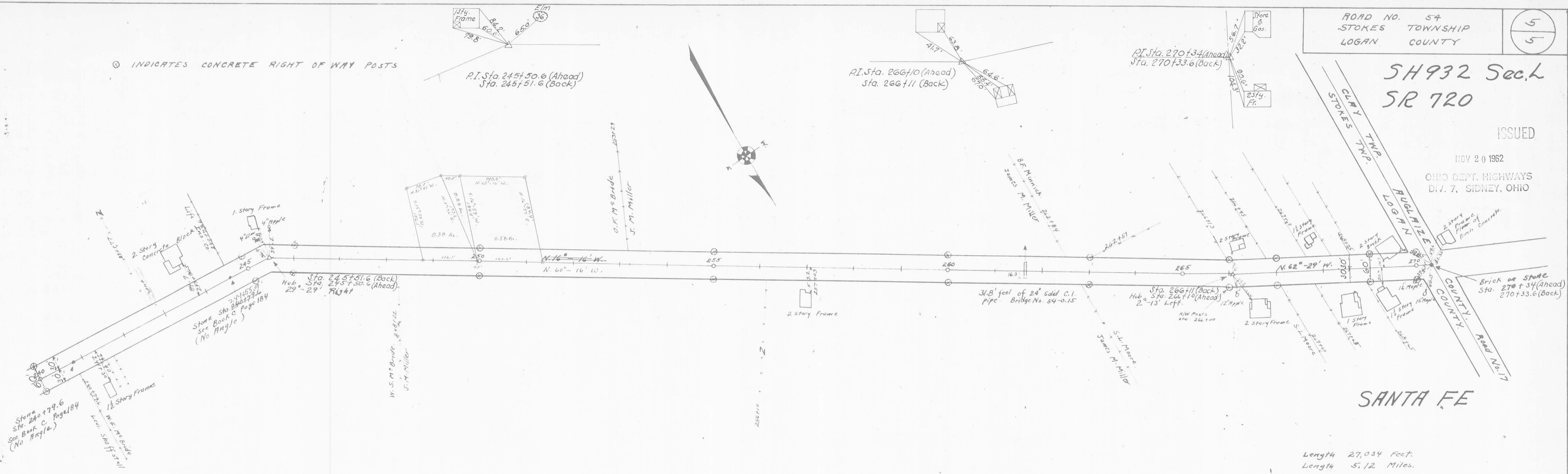
ISSUED

NOV 20 1962
OHIO DEPT. HIGHWAYS
DIV. 7, SIDNEY, OHIO

SANTA FE

Length 27,034 Feet.
Length 5.12 Miles.

⊙ INDICATES CONCRETE RIGHT OF WAY POSTS

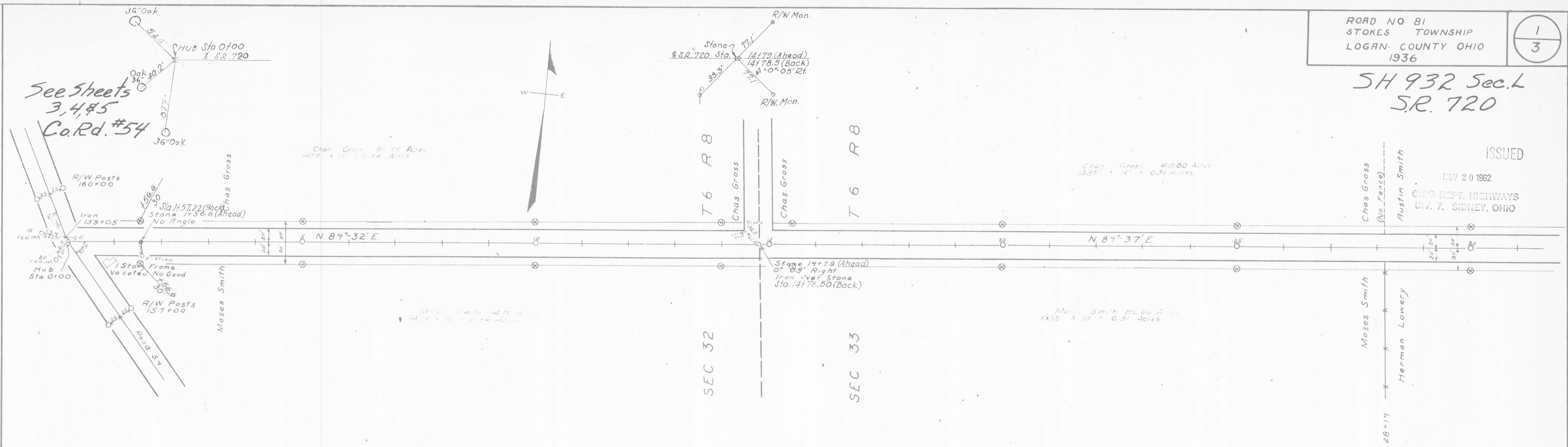


Field Notes in Logan County
Surveyors' Book No. 557

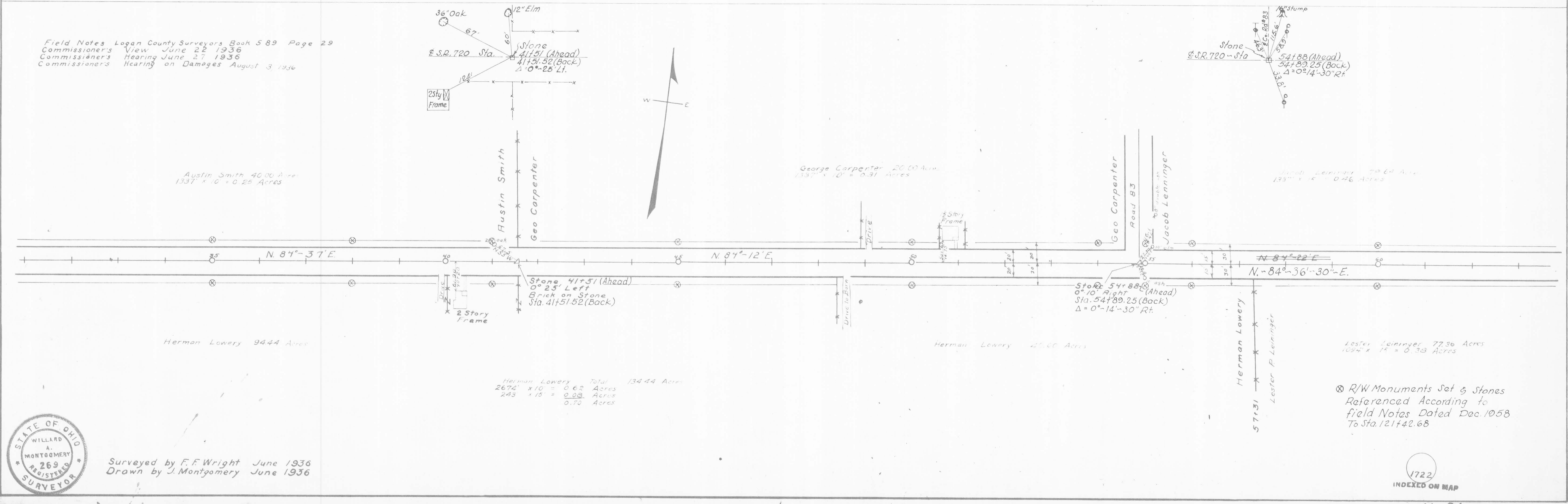
SH 932 Sec. 1
S.R. 720

ISSUED

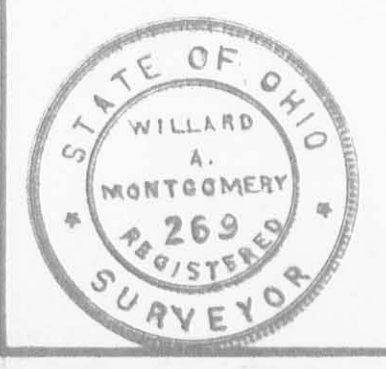
NOV 20 1962
OHIO DEPT. HIGHWAYS
DIV. 7, SIDNEY, OHIO



Field Notes Logan County Surveyors Book 589 Page 29
Commissioner's View June 22 1936
Commissioner's Hearing June 27 1936
Commissioner's Hearing on Damages August 3 1936



R/W Monuments Set & Stones
Referenced According to
Field Notes Dated Dec. 10 1958
To Sta. 121+42.68



Surveyed by F.F. Wright June 1936
Drawn by J. Montgomery June 1936

1722
INDEXED ON MAP

ROAD 81

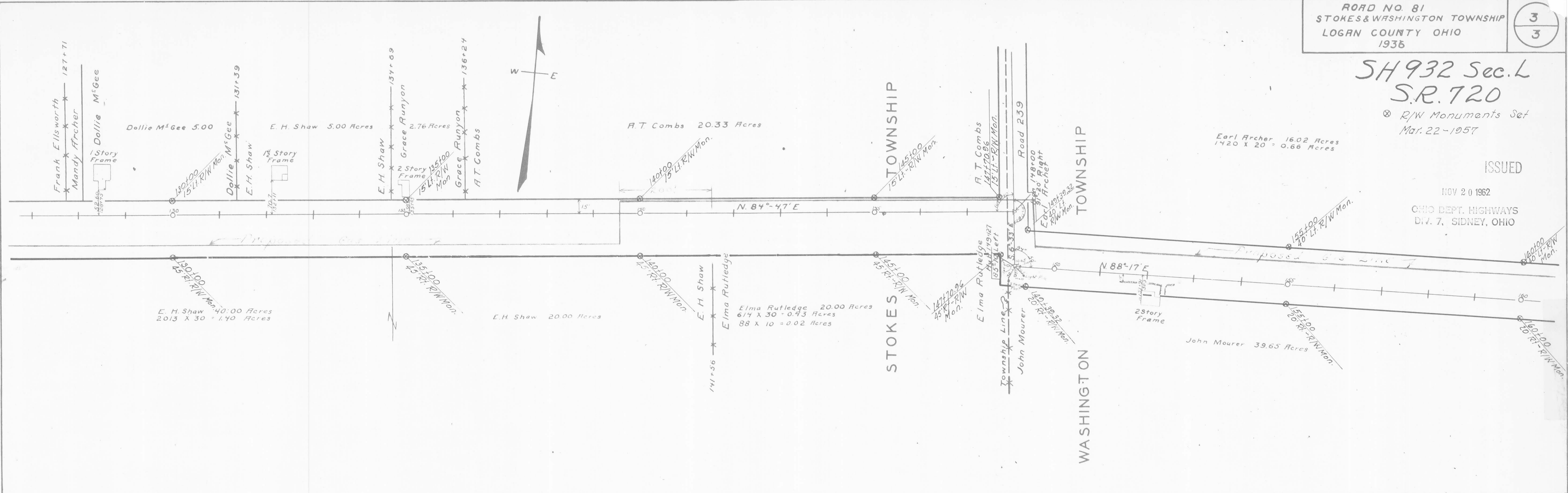
X-815

X 81

SH 932 Sec. L
S.R. 720
R/W Monuments Set
Mar. 22-1957

ISSUED

NOV 20 1962
OHIO DEPT. HIGHWAYS
DIV. 7, SIDNEY, OHIO

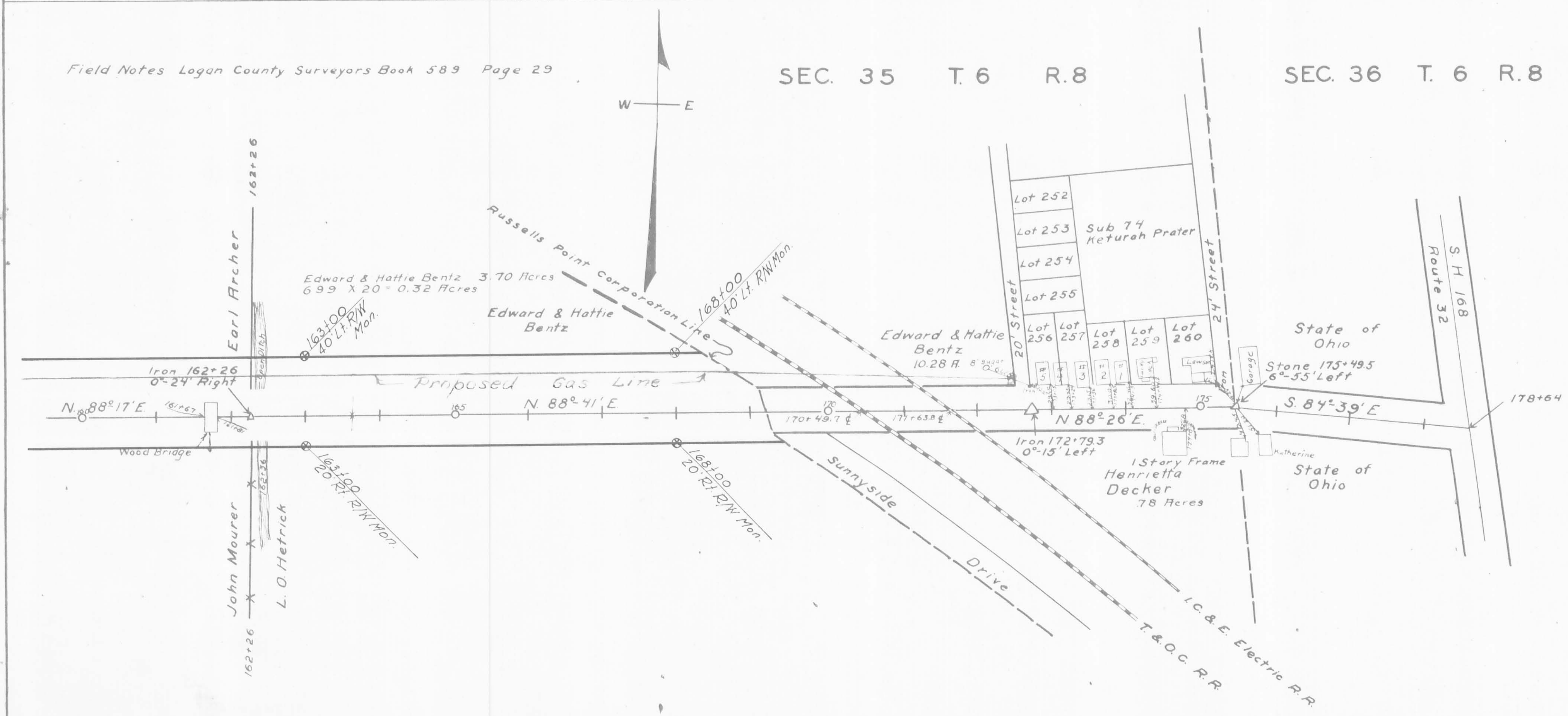


Field Notes Logan County Surveyors Book 589 Page 29

SEC. 35 T. 6 R. 8

SEC. 36 T. 6 R. 8

Total Length 17864 Feet
Total Length 3.38 Miles



Surveyed by F. F. Wright
Drawn by J. Montgomery

1722
INDEXED ON MAP

