

1966-67 R/W Mon. checked & reset - Wendel & Allen

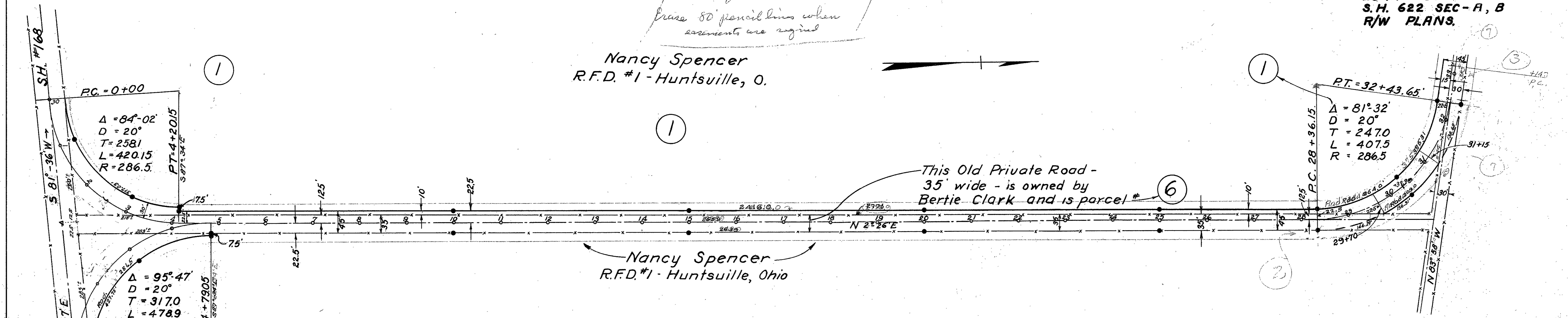
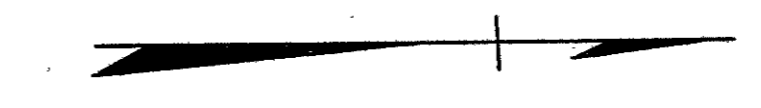
Fed Rd. Dist. No.	State	Fed Aid Project	Fiscal Year
10	OHIO		1934

LOGAN COUNTY
S.H. 622 SEC - A, B
R/W PLANS.

1
5

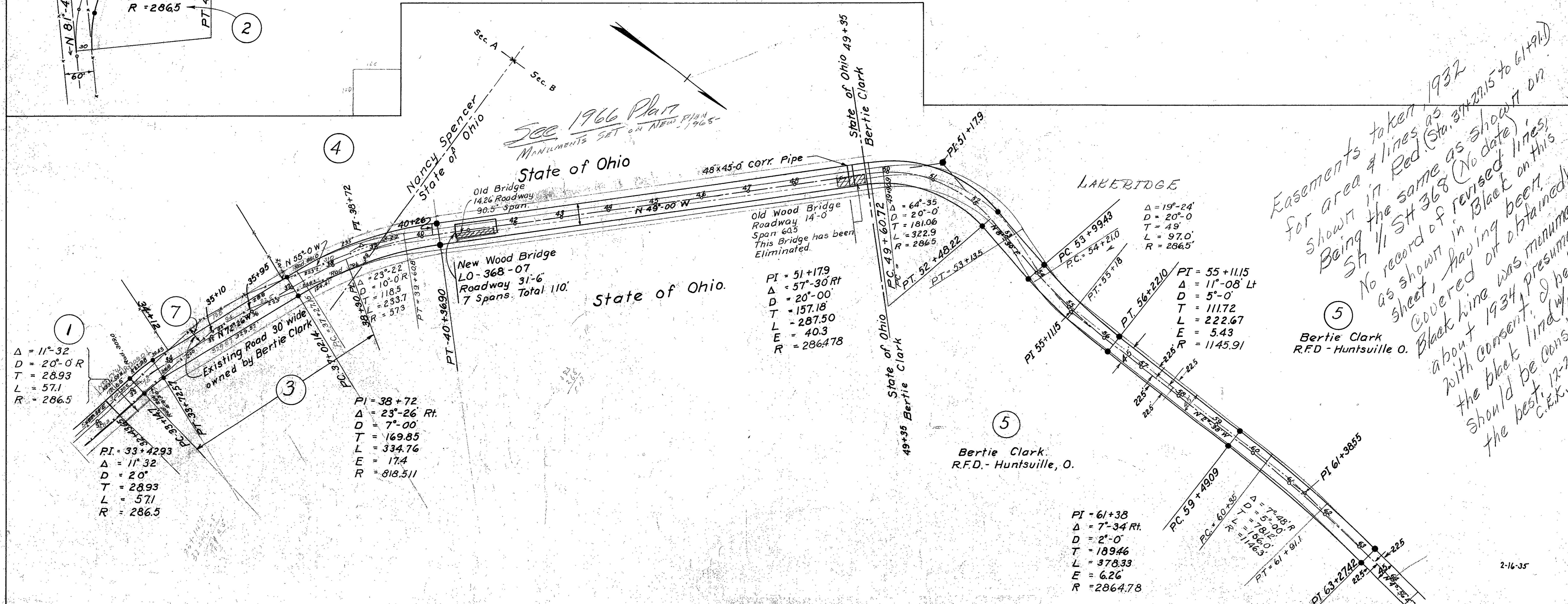
O.K. for 45' R/W
Erase 80 pencil lines when easements are signed

Nancy Spencer
R.F.D. #1 - Huntsville, O.



This Old Private Road -
35' wide - is owned by
Bertie Clark and is parcel # 6

Nancy Spencer
R.F.D. #1 - Huntsville, Ohio



SEE 1966 PLAN
MANUMENTS SET ON NEW PLAN 1965

New Wood Bridge
LO-368-07
Roadway 31'-6"
7 Spans. Total 110'

Old Wood Bridge
Roadway 14'-0"
Span 60.5
This Bridge has been
Eliminated.

LAKERIDGE

Easements taken 1932
for area & lines as
shown in Red (Sta. 31+27.15 to 61+91.1)
Being the same as shown on
Sh 1/2 St 368 (No date)
as shown in Black on this
sheet, having been
covered or obtained by
Black line was monumented
about 1934, presumably
with consent. I believe
the Black line should be considered
the best. 12-21-64
C.E.K.

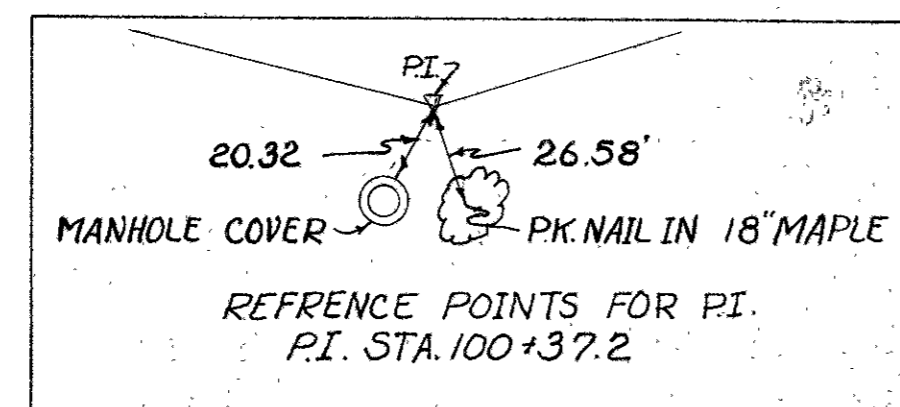
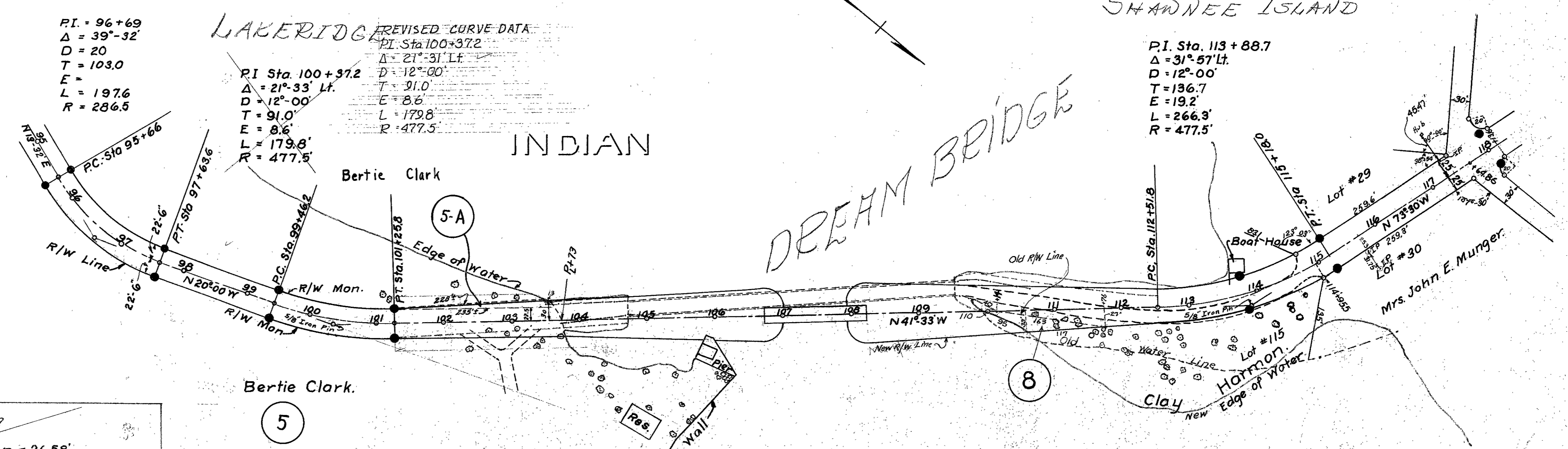
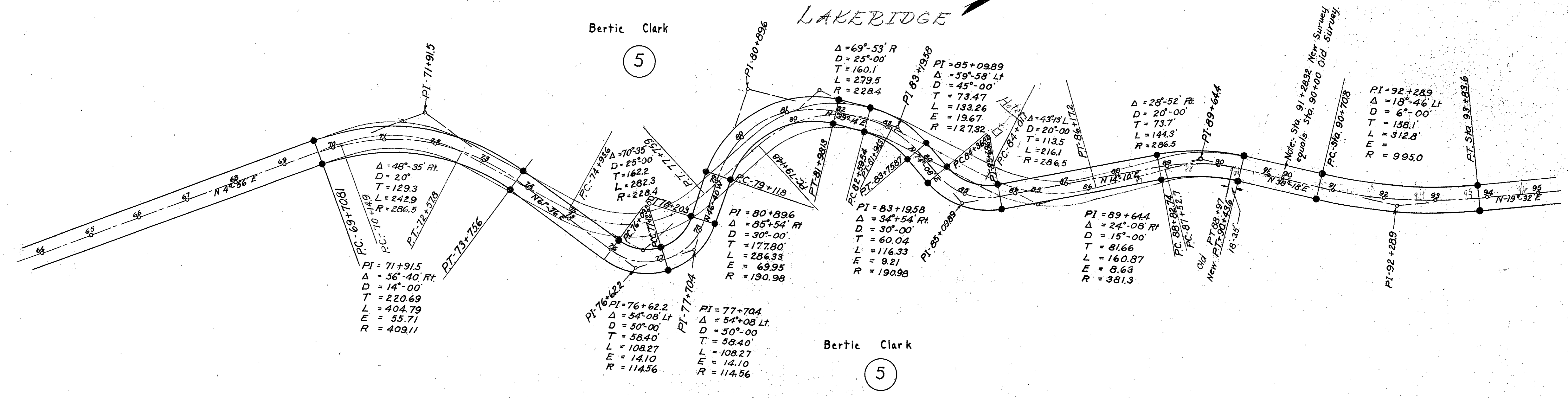
Bertie Clark
R.F.D. - Huntsville O.

Bertie Clark
R.F.D. - Huntsville, O.

Fed.Rd Dist.No.	State	Fed.Aid Project	Fiscal Year	(2) 5
10	OHIO		1934	

LOGAN COUNTY
S.H. 622 SEC-B
R/W PLANS.

Use black lines as monumented
Easements within to 4.5' R/W



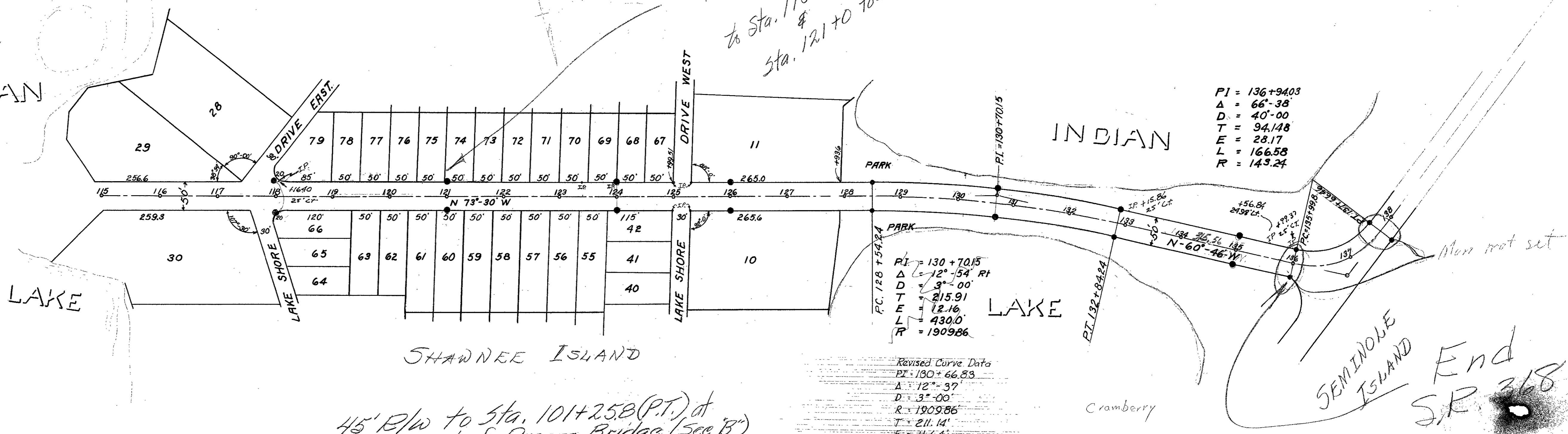
See 500 21-3

Fed. Rd. Dist. No.	State	Fed. Aid Project	Fiscal Year
10	OHIO		1934

LOGAN COUNTY
S.H. 622 SEC. C
R/W PLANS.

Dream Bridge from Lake Edge to Shawnee Island

Monuments set to Sta. 101+25.8 o.w.s. to Sta. 118+00 - 1967 & Sta. 121+00 to Sta. 135+00 - 1967



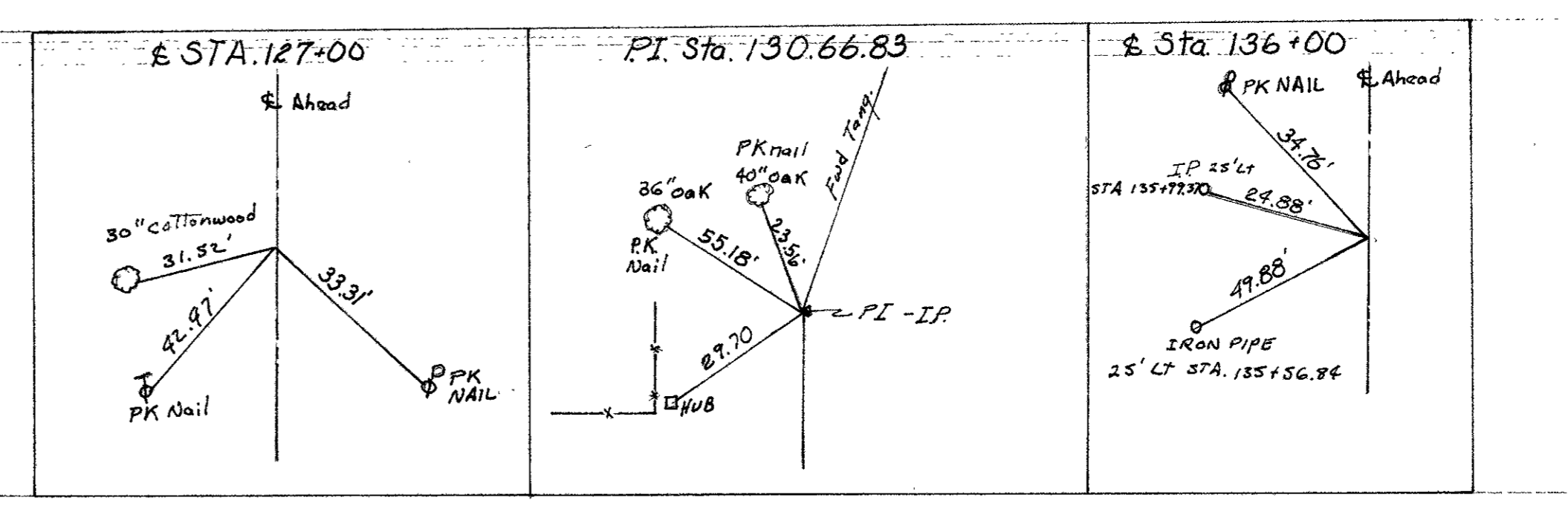
PI = 136+94.03
Δ = 66°-38'
D = 40'-00"
T = 94.148
E = 28.17
L = 166.58
R = 143.24

PI = 130+70.15
Δ = 12°-54' RI
D = 3'-00"
T = 215.91
E = 12.16
L = 430.0
R = 1909.86

Revised Curve Data
PI = 130+66.83
Δ = 12°-37'
D = 3'-00"
R = 1909.86
T = 211.14'
E = 11.64'
L = 420.56
PC = 128+55.69
PT = 132+76.25

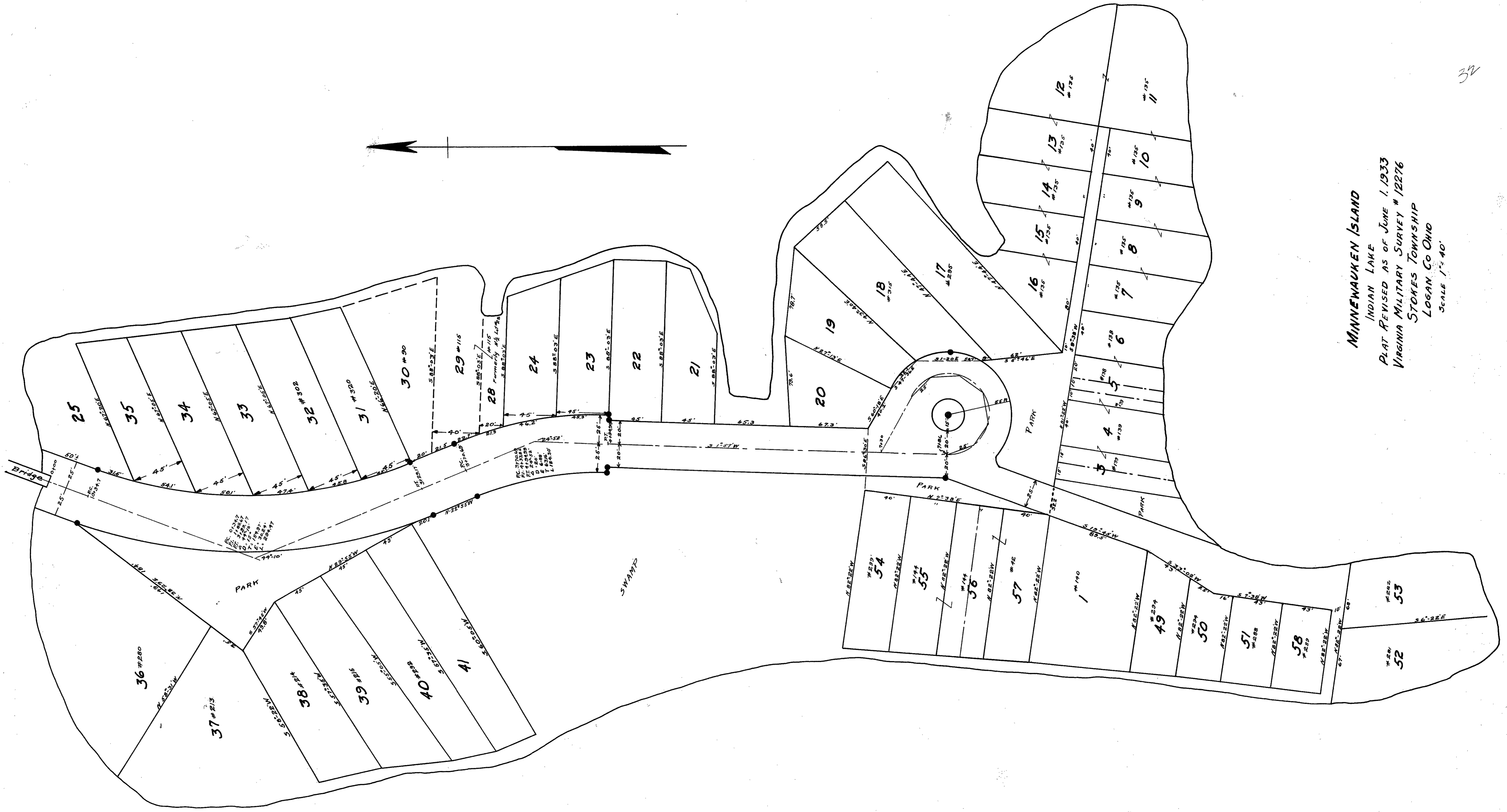
45' R/W to Sta. 101+25.8 (P.T.) at S. end of Dream Bridge (See 'B')
50' R/W from N. end Sta. 113+88.7 (M.P.) to Sta. 135+00 (See, 'C')

SEMINOLE ISLAND
End S.R. 368



SR 368
Abandoned to Co.

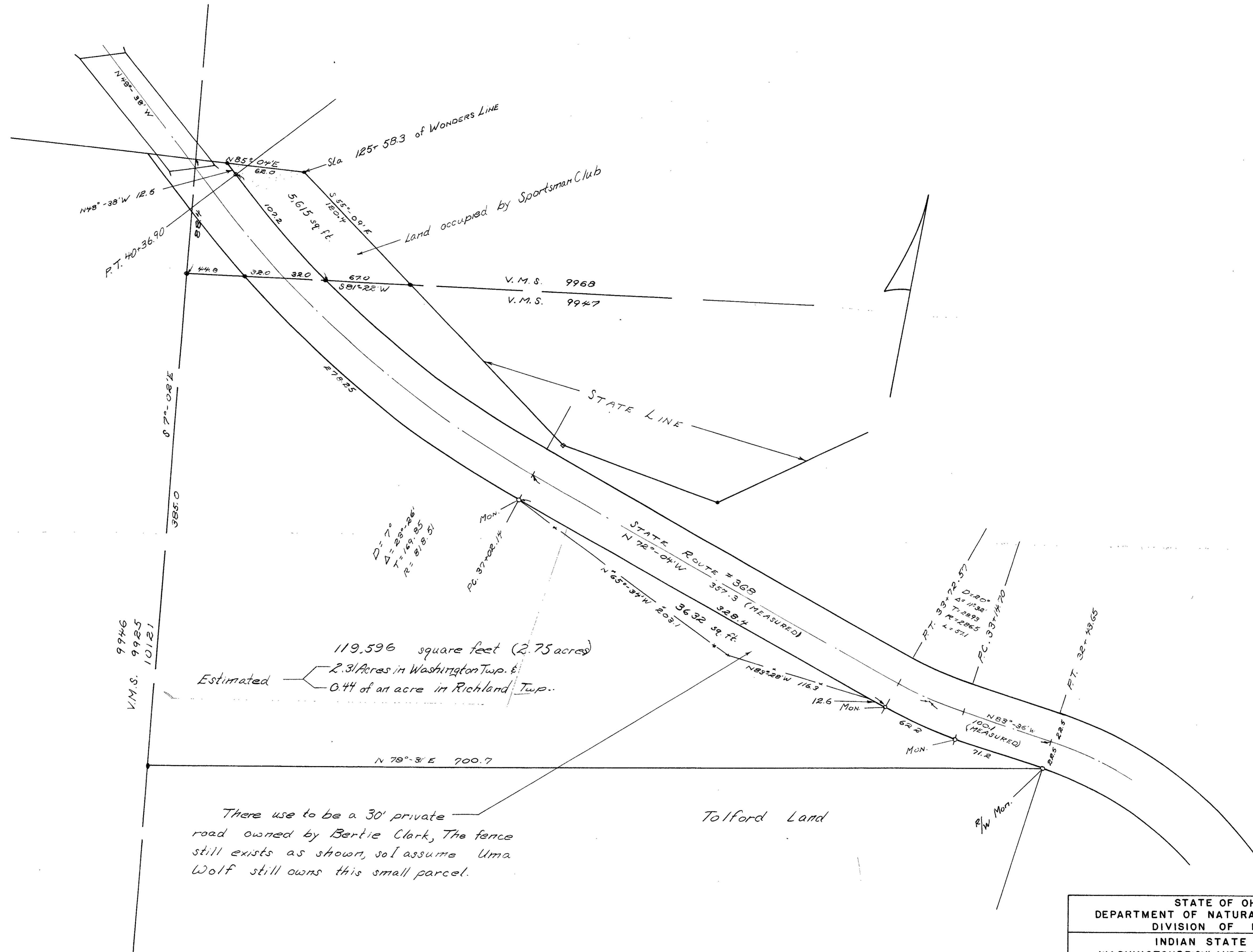
32



MINNEWAUKEN ISLAND
 INDIAN LAKE
 PLAT REVISED AS OF JUNE 1, 1933
 VIRGINIA MILITARY SURVEY # 12276
 STOKES TOWNSHIP
 LOGAN CO OHIO
 SCALE 1" = 40'

Reid 10-31-62

MOUND WOOD
STATE PARK



119,596 square feet (2.75 acres)
 Estimated — 2.3/ Acres in Washington Twp. &
 0.44 of an acre in Richland Twp.

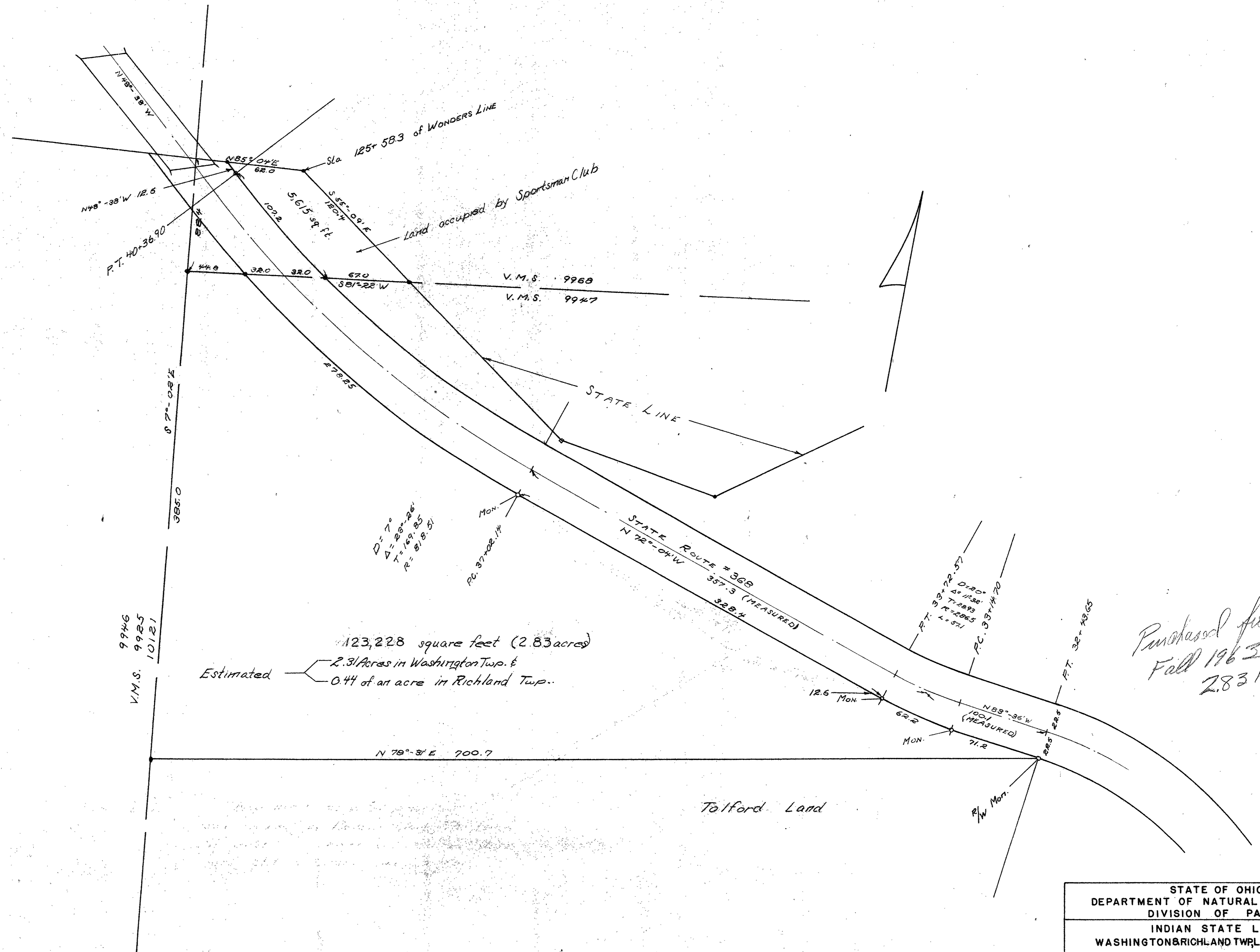
There use to be a 30' private road owned by Bertie Clark, The fence still exists as shown, so I assume Uma Wolf still owns this small parcel.

NOTE: Curve Data is for E.
 Surveyed Oct., 1962.

STATE OF OHIO DEPARTMENT OF NATURAL RESOURCES DIVISION OF PARKS	
INDIAN STATE LAKE WASHINGTON RICHLAND TWP LOGAN COUNTY	
TOLFORD SURVEY ADJACENT TO MOUNDWOOD PARK	
OWEN K. SHIRK BELLEFONTAINE, OHIO SURVEYOR 4271	SCALE : 1" = 40'

Rec'd 8-7-64

MOUND WOOD STATE PARK



123,228 square feet (2.83 acres)
 Estimated — 2.3/Acres in Washington Twp. &
 — 0.44 of an acre in Richland Twp.

Purchased from Tolford
 Fall 1963 —
 2.83 Ac.

Note: Curve Data is for &
 Surveyed Oct., 1962.

STATE OF OHIO DEPARTMENT OF NATURAL RESOURCES DIVISION OF PARKS	
INDIAN STATE LAKE WASHINGTON & RICHLAND TWP. LOGAN COUNTY	
TOLFORD SURVEY ADJACENT TO MOUND WOOD PARK	
OWEN K. SHIRK BELLEFONTAINE, OHIO SURVEYOR 4271	SCALE: 1" = 40'