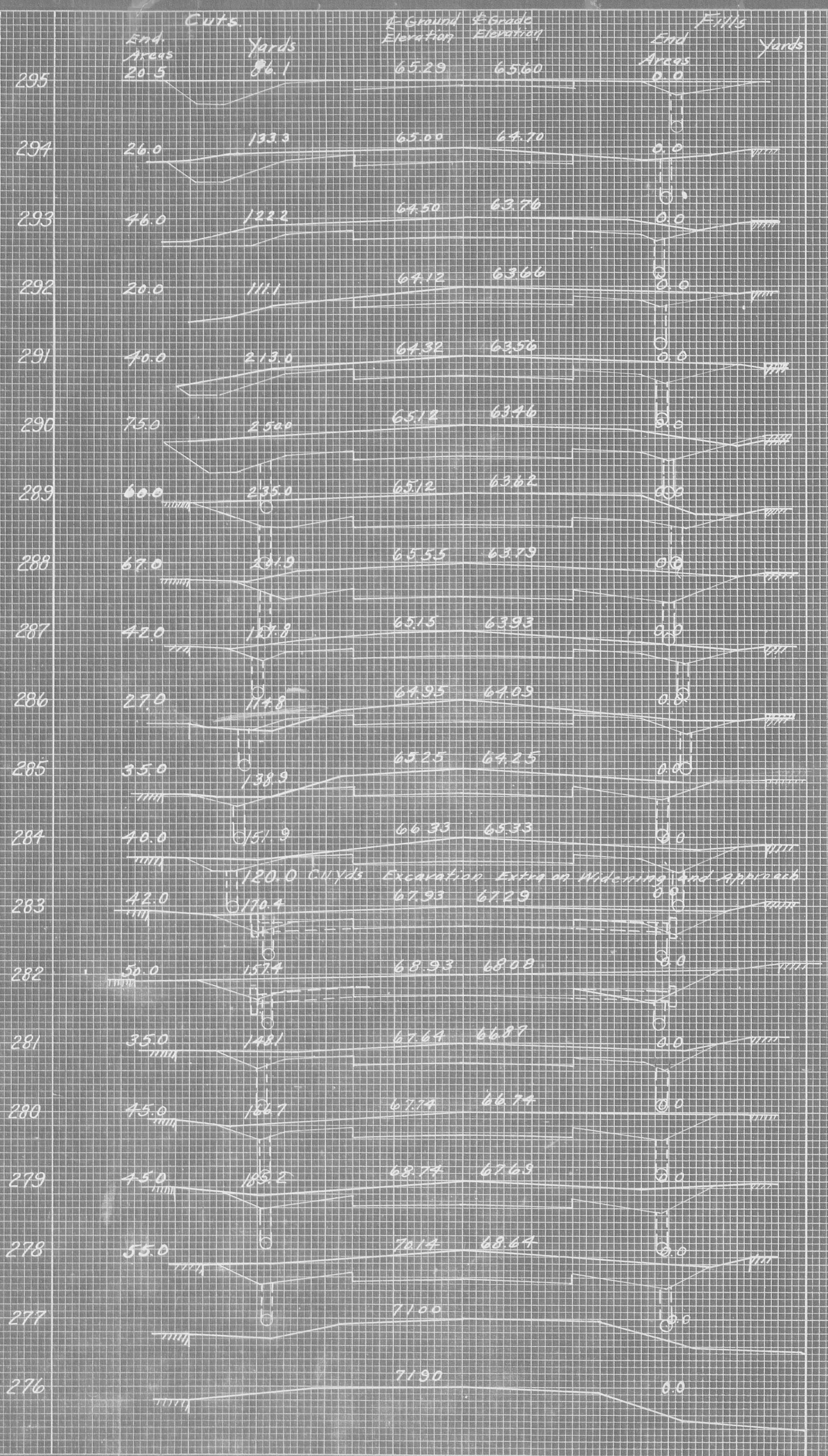
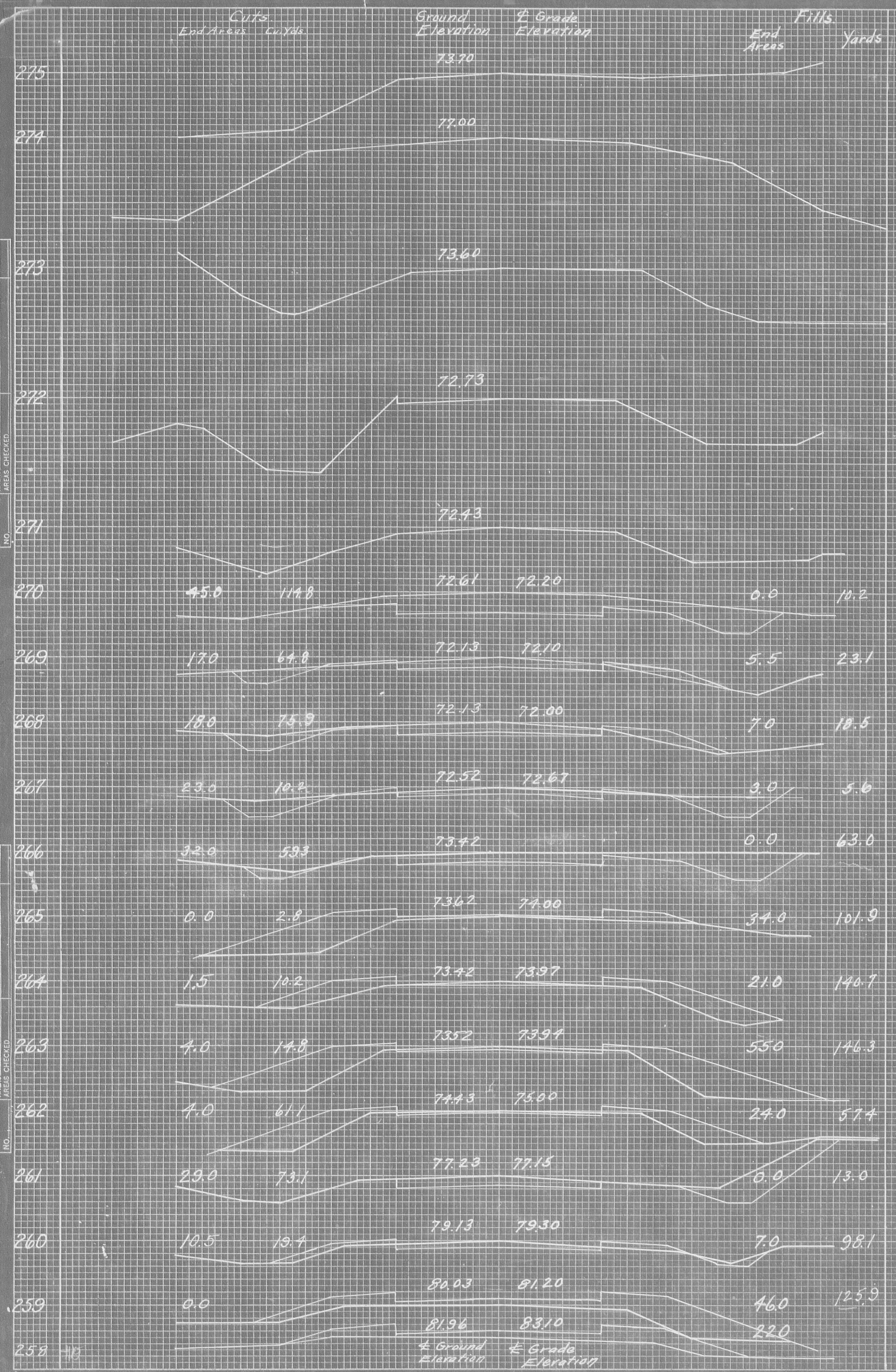
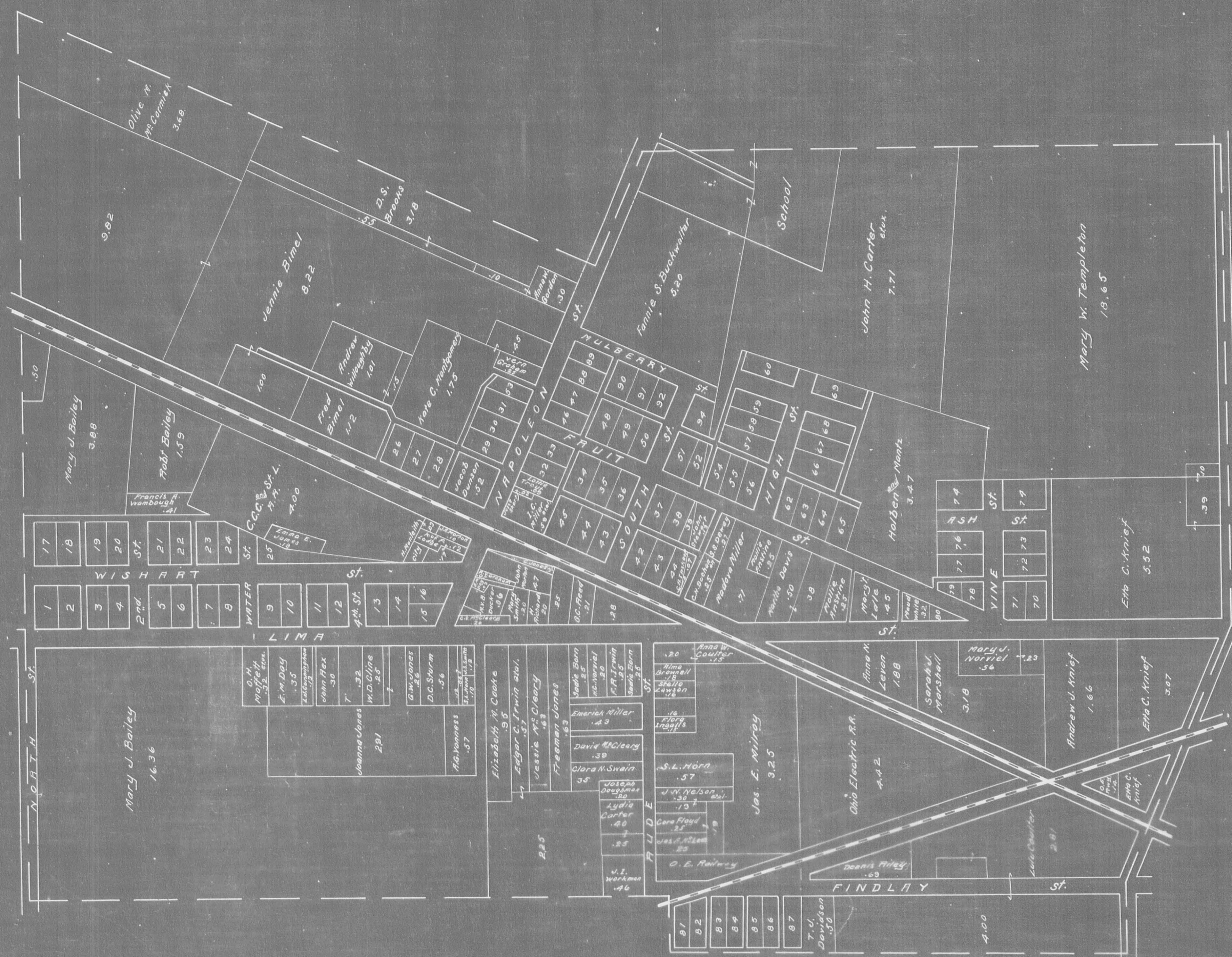


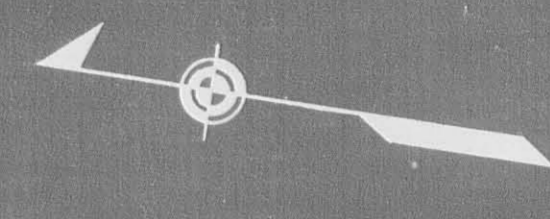
FINAL SURVEY NOTE BOOK NO. _____
DATE _____
BY _____
SUPERVISOR'S CHECK _____
TELEPHONE NO. _____
AREAS CHECKED _____

ORIGINAL SURVEY NOTE BOOK NO. _____
DATE _____
BY _____
SUPERVISOR'S CHECK _____
TELEPHONE NO. _____
AREAS CHECKED _____

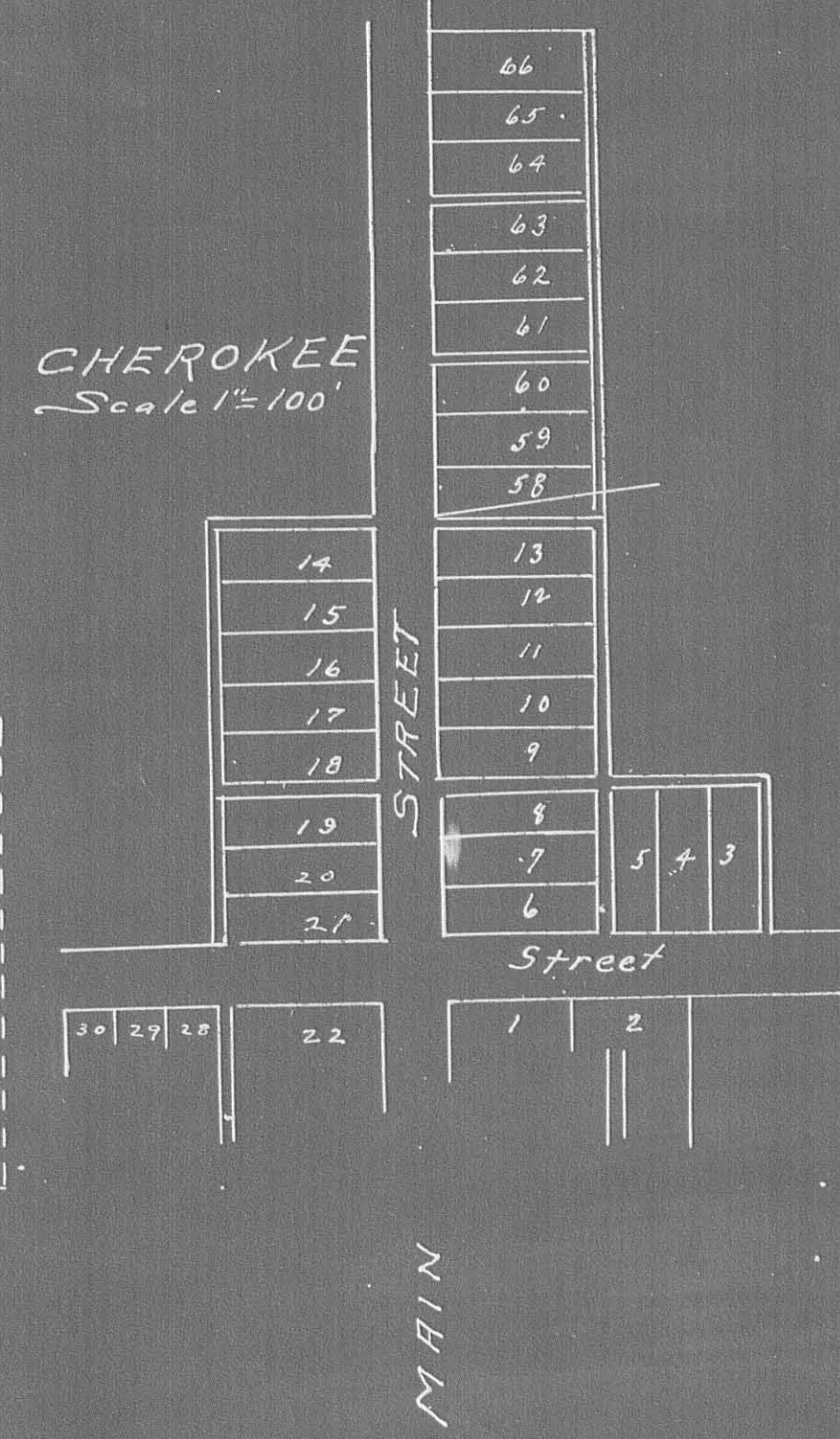
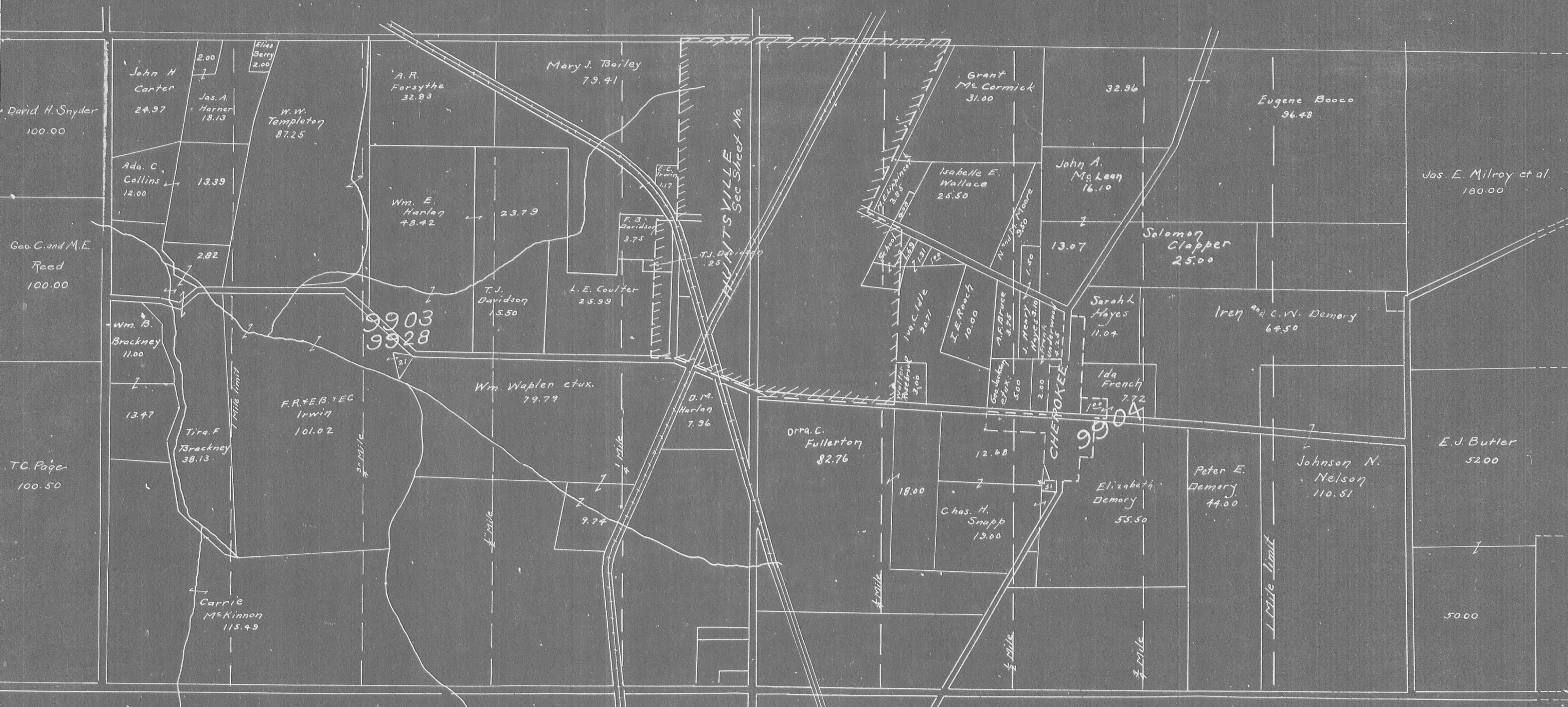




ASSESSMENT PLAT



HUNTSVILLE SECTION
I.C.H. 130
Scale: 1 inch = 200 feet



Assessment Plat
Territory laying
East and West
of
Huntsville
Scale 8" = 1 Mile.

SUMMARY of QUANTITIES

| PAVEMENT QUANTITIES | | | ROADWAY QUANTITIES | | | | | | | | | | | | | |
|------------------------------|--------------------------------|---------------------|--------------------|-----------------------------|----------------|----------------------------|--|----------------------|--|------------------------------------|------------------------------------|----------------|---------------------------|------------------|--|--|
| 8" Uniform Concrete Pavement | 6" x 8" Circular Concrete curb | 6" x 18" Cona. CURB | Excavation | Excavation Drainage Bitches | 1:3:6 Concrete | 12" vitrified pipe inposed | 12" vitrified pipe with gravel base fill | 8" vit. pipe inposed | Relaying 10" tile and gravel back fill | 8" Drain Tile with gravel backfill | 5" Drain Tile with gravel backfill | 12" Vit. Elbow | #/ Curved Top Catch Basin | Resetting Inlets | | |
| 5650 sq.yds | 33 lin ft. | 472 Lin Ft. | 3341 Cu.yds | 688 cu.yd. | 22.5 Cu.yd. | 86 Lin. Ft. | 118 Lin Ft. | 160 Lin.Ft. | 354 Lin. Ft. | 2016 Lin. Ft. | 267 Lin Ft | 1 | 4 | 1 | | |