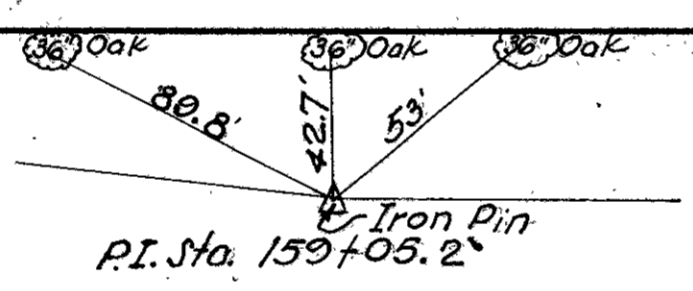
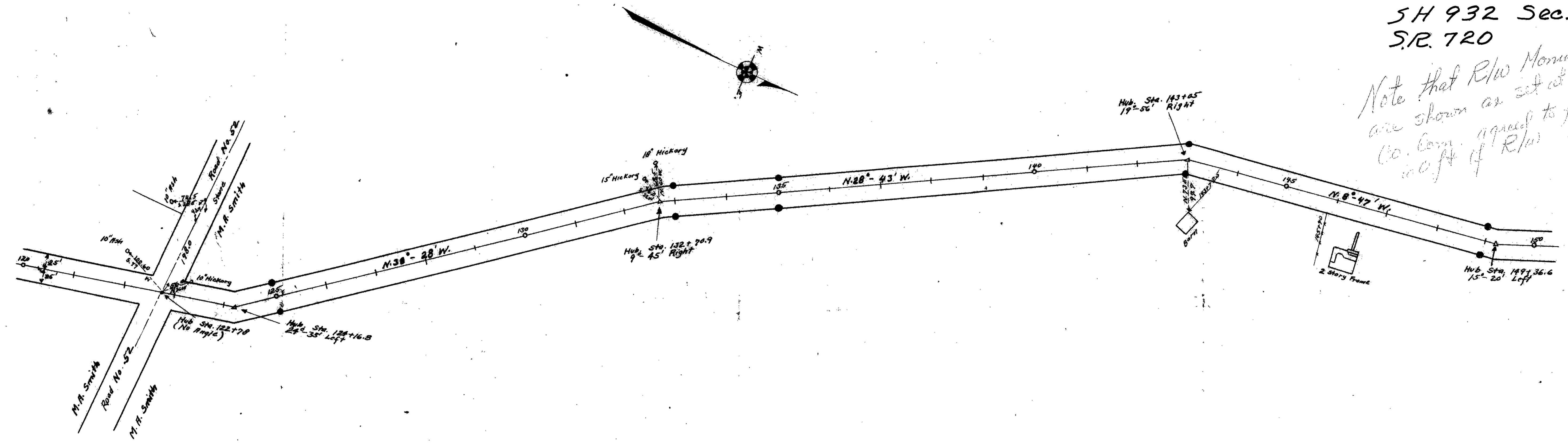


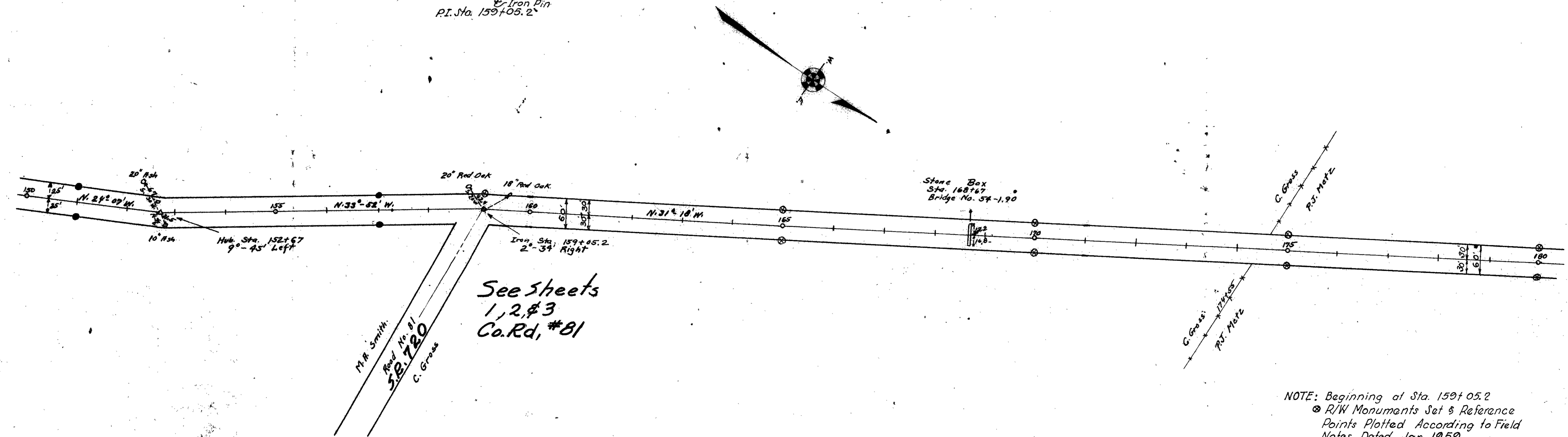
SH 932 Sec. 1
S.R. 720

Note that R/W Monuments
are shown as set at 50 ft.
Co. Com. agrees to furnish
100 ft of R/W

● INDICATES CONCRETE RIGHT OF WAY POSTS.



Field Notes in Logan County
Surveyors Book 537

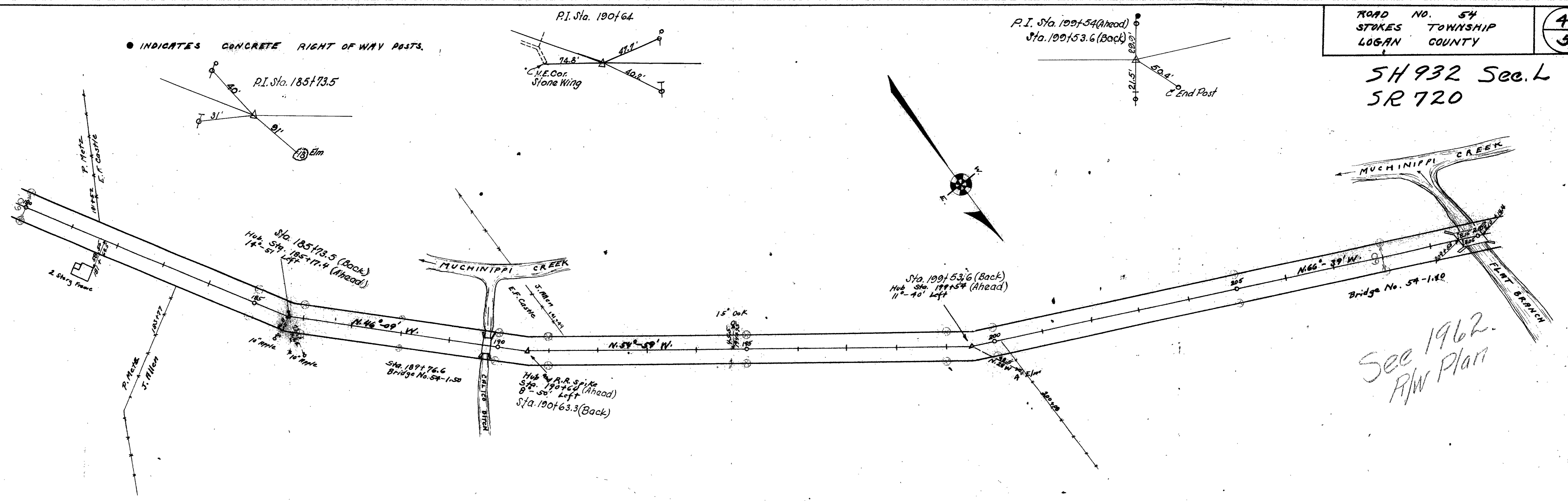


See sheets
1, 2, & 3
Co. Rd. #81

NOTE: Beginning at Sta. 159+05.2
● R/W Monuments Set & Reference
Points Plotted According to Field
Notes Dated Jan. 1959

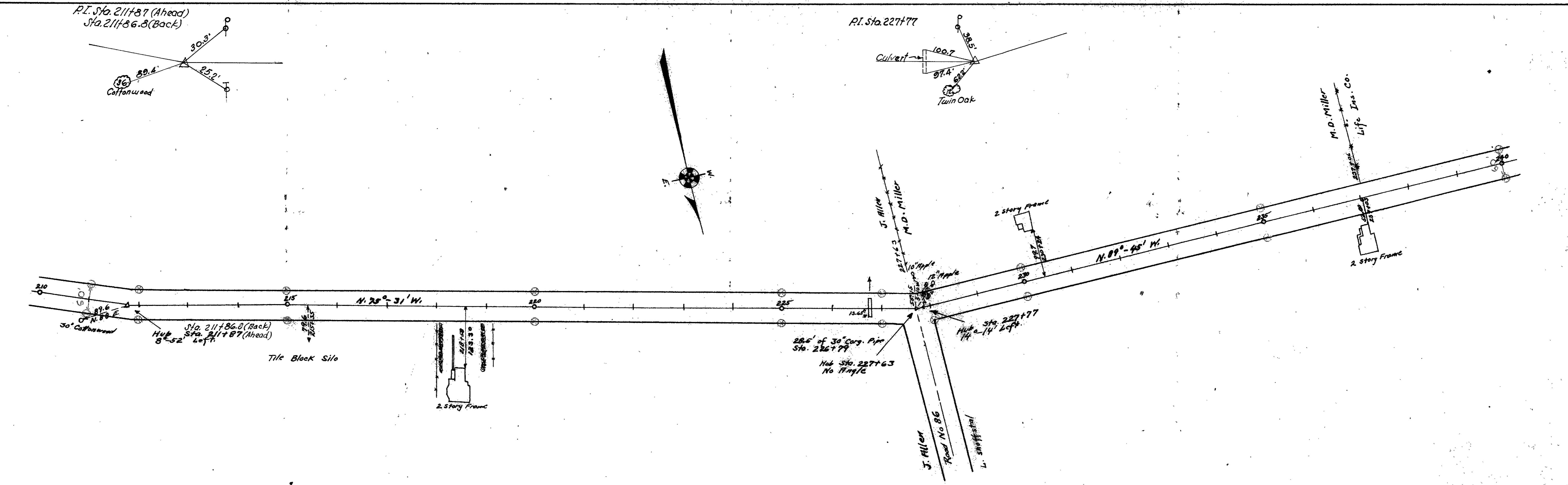
SH 932 Sec. L
 SR 720

● INDICATES CONCRETE RIGHT OF WAY POSTS.



P.I. Sta. 211+87 (Ahead)
 Sta. 211+86.8 (Back)

P.I. Sta. 227+77



Field Notes in Logan County
 Surveys Book 539

SH 932 Sec. 4
 SR 720

SANTA FE

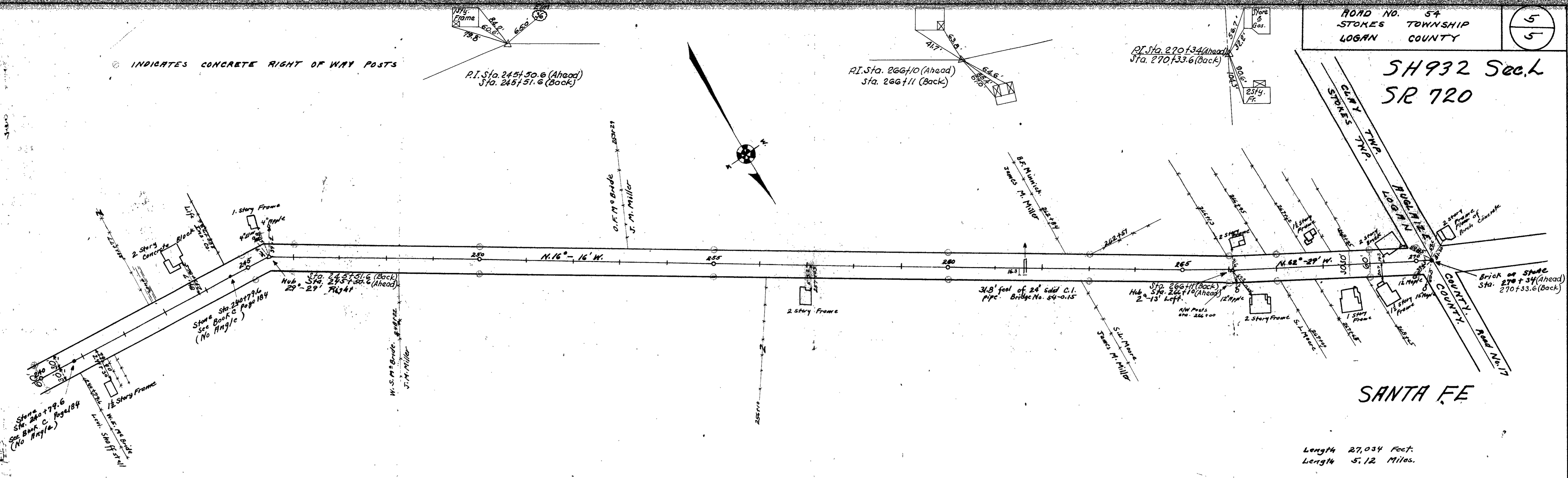
Length 27,034 Feet.
 Length 5.12 Miles.

INDICATES CONCRETE RIGHT OF WAY POSTS

P.I. Sta. 245+50.0 (Ahead)
 Sta. 245+51.6 (Back)

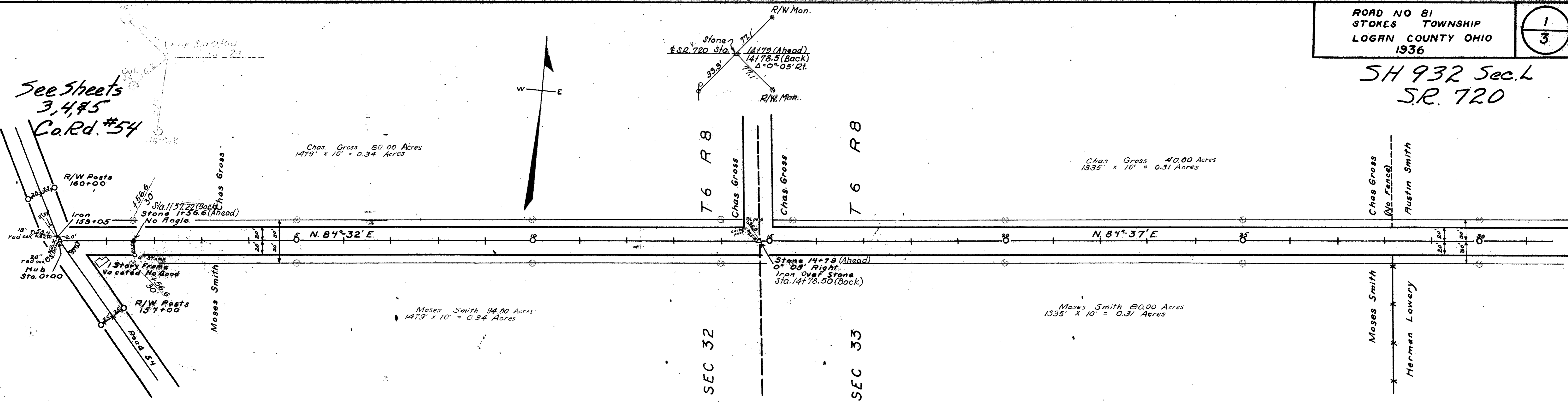
P.I. Sta. 266+10 (Ahead)
 Sta. 266+11 (Back)

P.I. Sta. 270+34 (Ahead)
 Sta. 270+33.6 (Back)

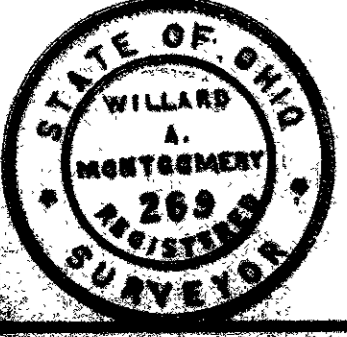
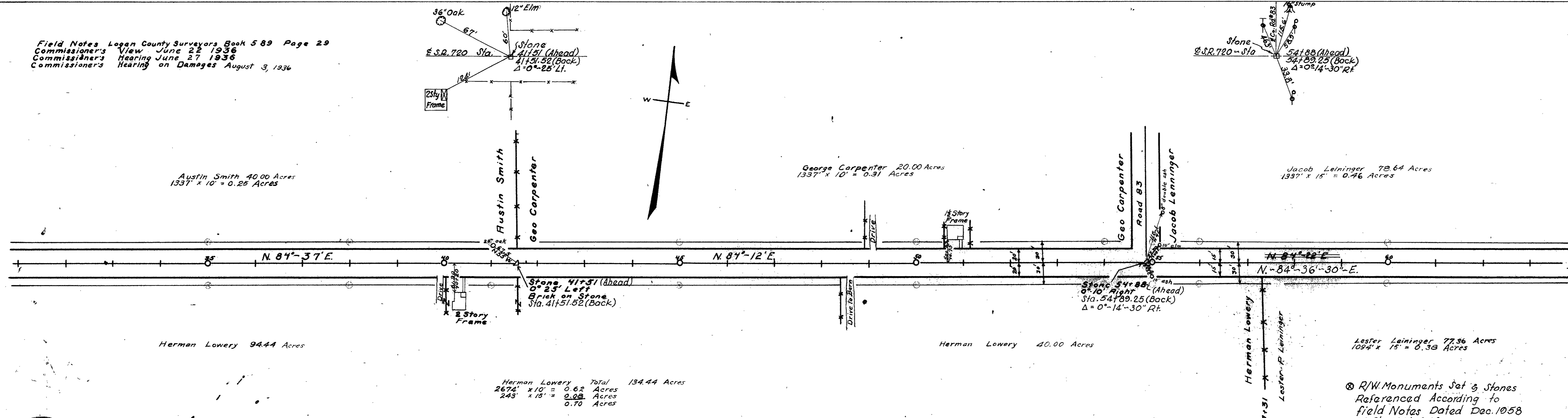


Field Notes in Logan County
 Surveyors Book No. 657

SH 932 Sec. L
S.R. 720



Field Notes Logan County Surveyors Book 589 Page 29
Commissioner's View June 22 1936
Commissioner's Hearing June 27 1936
Commissioner's Hearing on Damages August 3, 1936



Surveyed by F.F. Wright June 1936
Drawn by J. Montgomery June 1936

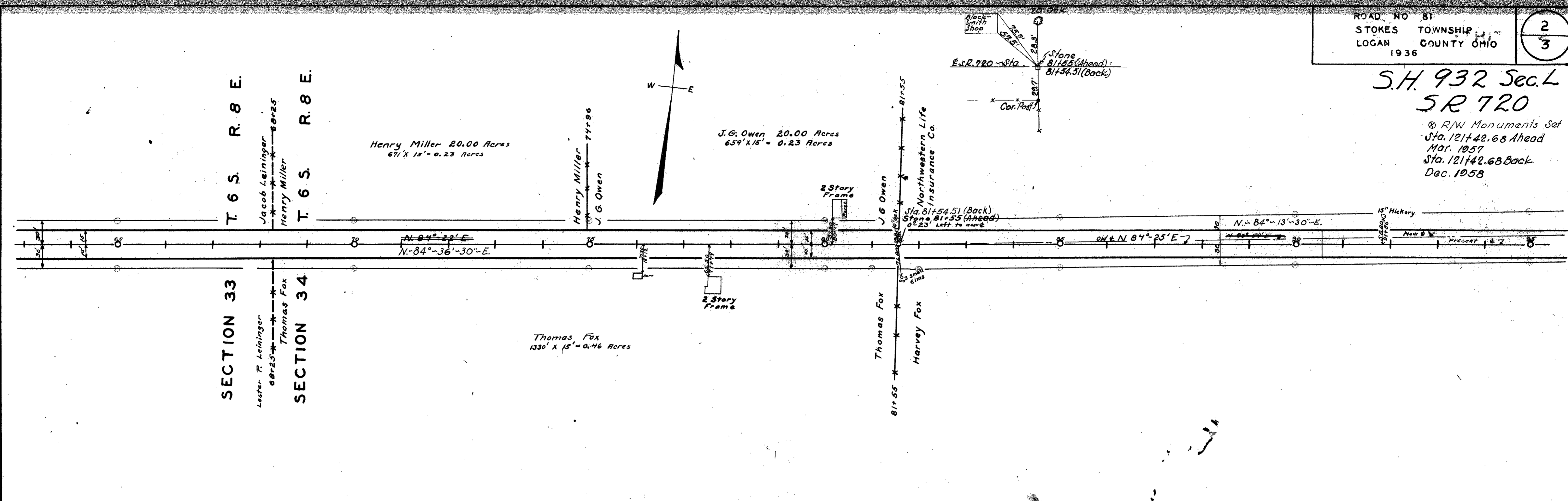
1722
INDEXED ON MAP

ROAD 81

X-226

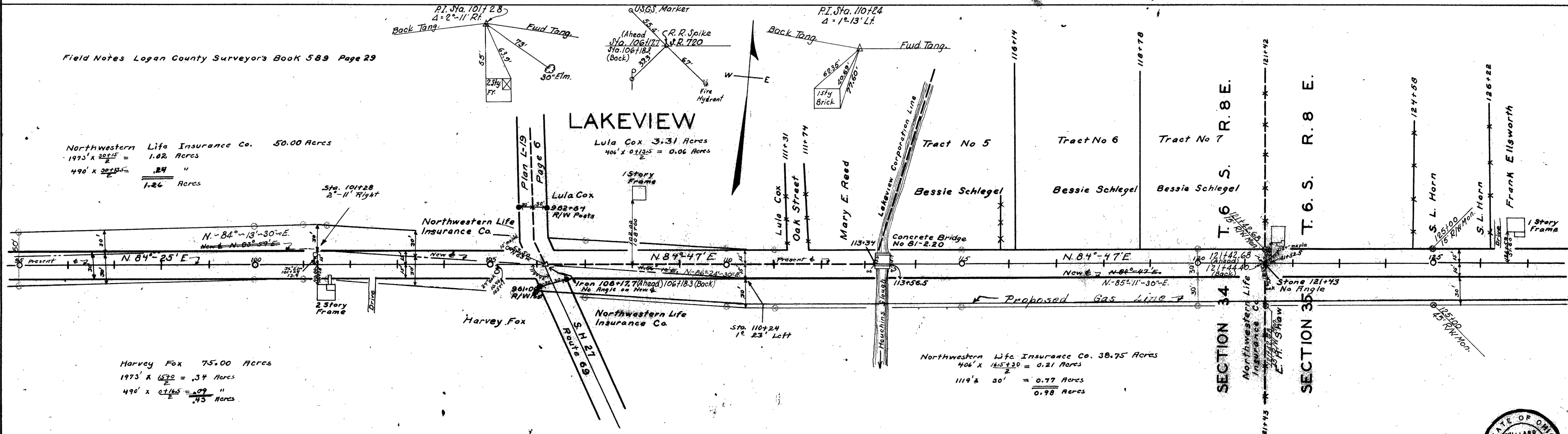
S.H. 932 Sec. L
SR 720

© R/W Monuments Set
Sta. 121+42.68 Ahead
Mar. 1957
Sta. 121+42.68 Back
Dec. 1958



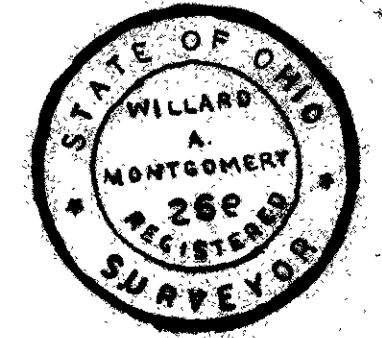
Field Notes Logan County Surveyors Book 589 Page 29

Northwestern Life Insurance Co. 50.00 Acres
 $1973 \times \frac{20715}{2} = 1.02 \text{ Acres}$
 $490 \times \frac{20715}{2} = .24 \text{ "}$
 1.26 Acres

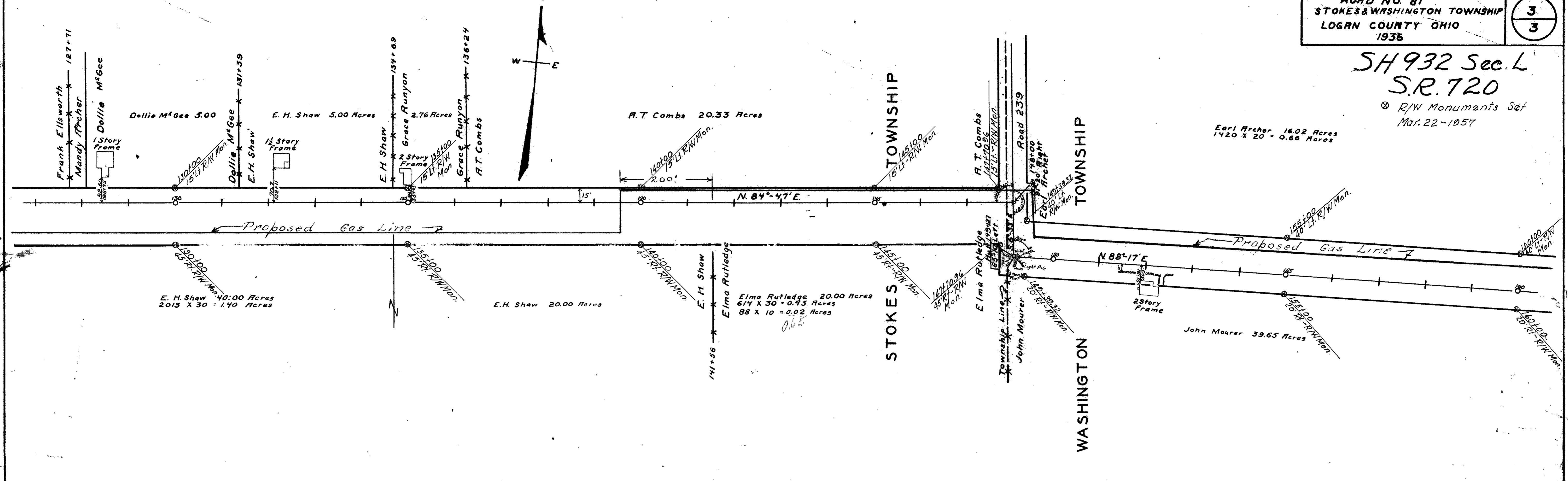


Harvey Fox 75.00 Acres
 $1973 \times \frac{15720}{2} = .34 \text{ Acres}$
 $490 \times \frac{15720}{2} = .09 \text{ "}$
 .43 Acres

Northwestern Life Insurance Co. 38.75 Acres
 $406 \times \frac{165730}{2} = 0.21 \text{ Acres}$
 $1119 \times \frac{30}{2} = 0.77 \text{ Acres}$
 0.98 Acres



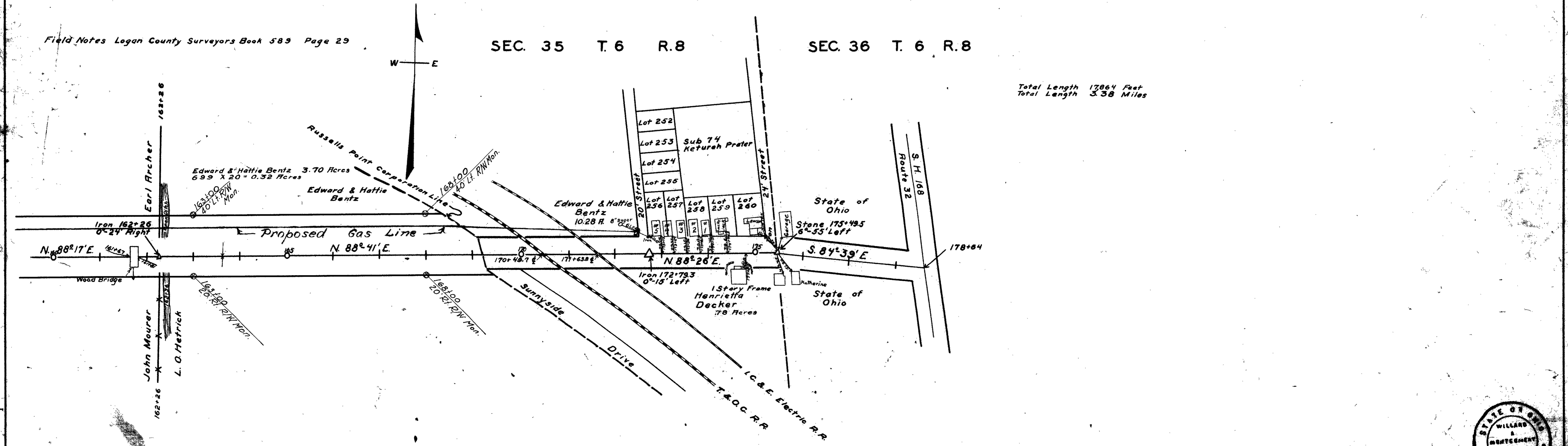
SH 932 Sec. L
S.R. 720
R/W Monuments Set
Mar. 22-1957



Field Notes Logan County Surveyors Book 589 Page 29

SEC. 35 T. 6 R. 8 SEC. 36 T. 6 R. 8

Total Length 17864 Feet
Total Length 3.38 Miles



Surveyed by F. F. Wright
Drawn by J. Montgomery

1722
INDEXED ON MAP

