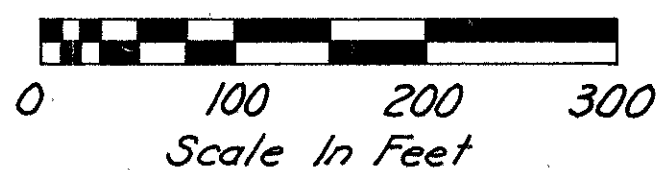


Note: All bearings are grid bearings.
See LOG-235-18.34/LOG-708-0.80
& plat for state plane coordinate
traverse.

CENTERLINE PLAT



Washington Township
Sec. 11-T.75-R.8.E.

S.T. Sta 23+73.68 Prop. S.R. 708

C.S. Sta. 21+23.68 Prop. S.R. 708

FHWA REGION	STATE	PROJECT	62
5	OHIO		68
LOGAN COUNTY			1
LOG-235-15.27			7
LOG-708-0.00			

Washington Township
Sec. 12-T.75-R.8.E.

PROP. S.R. 708 CURVE DATA

PI Sta. 17+85.61
 $\Delta = 92^\circ 39' 26''$ Lt. $Qs = 8^\circ 45'$
 $D = 7^\circ 00'$ $Xc = 249.42'$
 $R = 818.51'$ $Yc = 12.71'$
 $Ts = 985.61'$ $p = 3.18'$
 $Ls = 250.00'$ $k = 124.90'$
 $Lc = 1073.68'$ $E_s = 371.45'$

PROP. S.R. 708 CURVE DATA

PI Sta. 3+84.10
 $\Delta = 16^\circ 06' 06''$ Lt.
 $D = 2^\circ 30'$
 $R = 2291.83'$
 $T = 324.17'$
 $L = 644.07'$
 $E = 228.1'$

POC Sta. 15+86.84 Prop. S.R. 708 =
 POT. Sta. 53+59.63 Prop. TR. 61

PROP. TR. 61 CURVE DATA

PI Sta. 50+00.00
 $\Delta = 43^\circ 40' 17''$ Lt.
 $D = 19^\circ 00'$
 $R = 301.56'$
 $T = 120.83'$
 $L = 229.85'$
 $E = 23.31'$

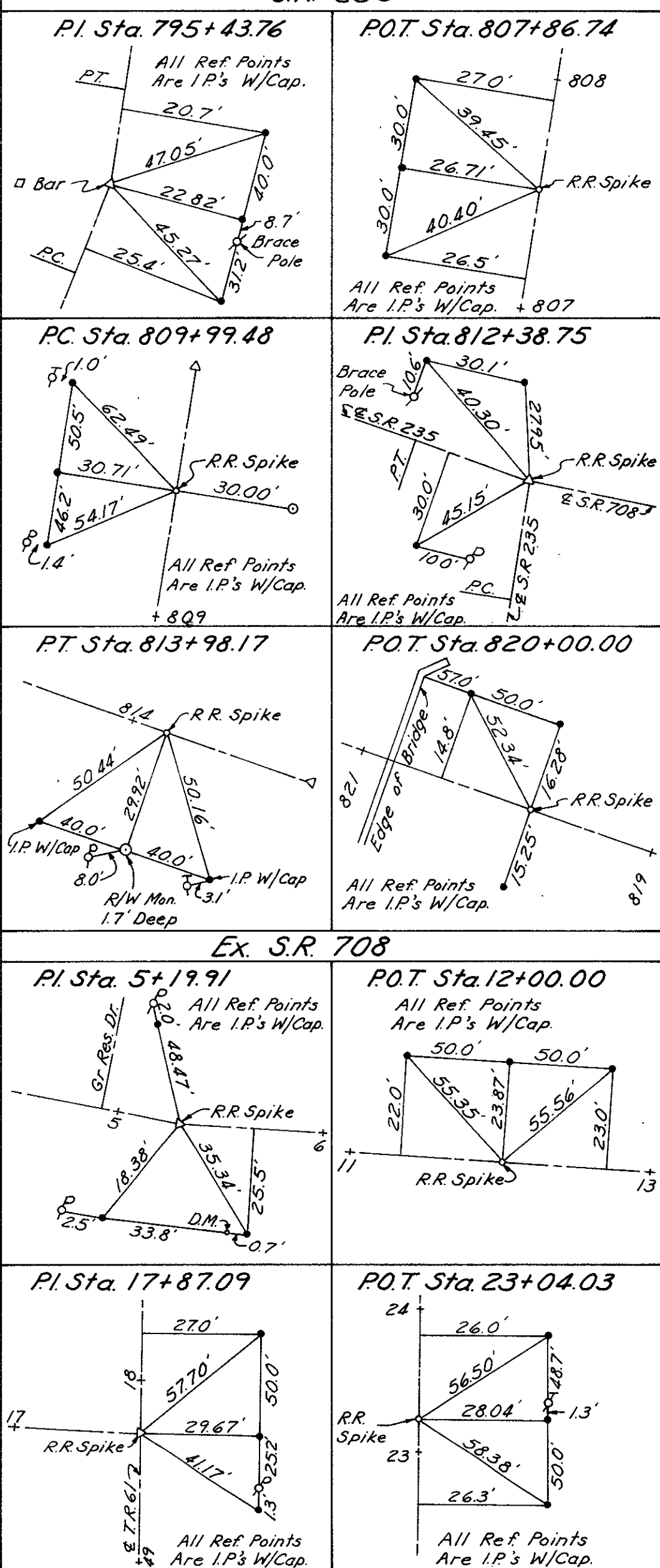
S.R. 235 CURVE DATA

PI Sta. 812+38.75
 $\Delta = 79^\circ 44' 20''$ Lt.
 $D = 20^\circ 00'$
 $R = 286.48'$
 $T = 239.27'$
 $L = 398.69'$
 $E = 86.78'$

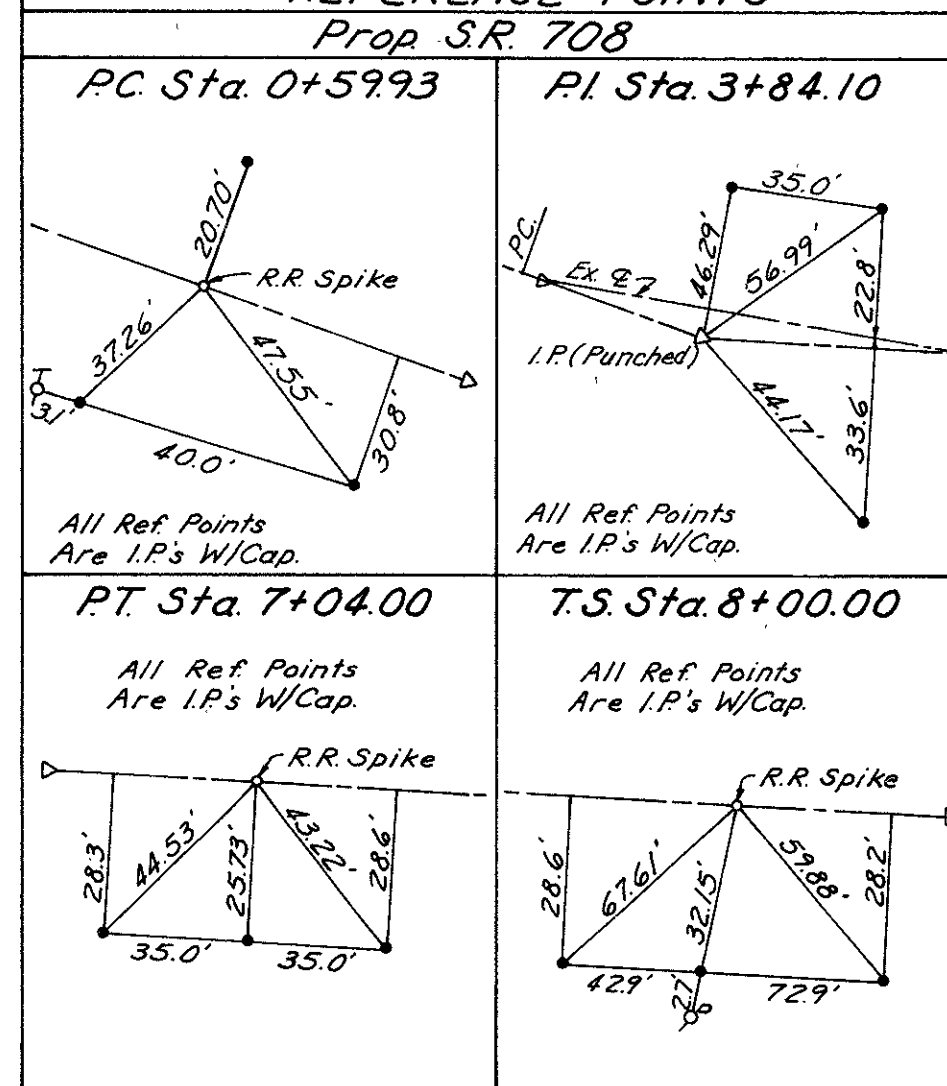
S.R. 235 CURVE DATA

PI Sta. 795+43.76
 $\Delta = 12^\circ 46' 40''$ Lt.
 $D = 4^\circ 00'$
 $R = 1432.39'$
 $T = 160.39'$
 $L = 319.44'$
 $E = 8.95'$
 PC Sta. 793+83.37
 PT Sta. 797+02.81

**REFERENCE POINTS
S.R. 235**

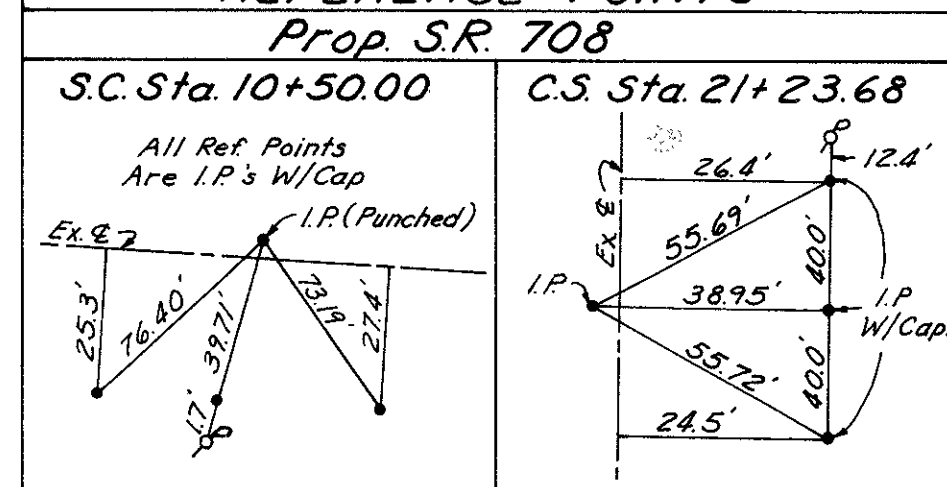


**REFERENCE POINTS
Prop. S.R. 708**

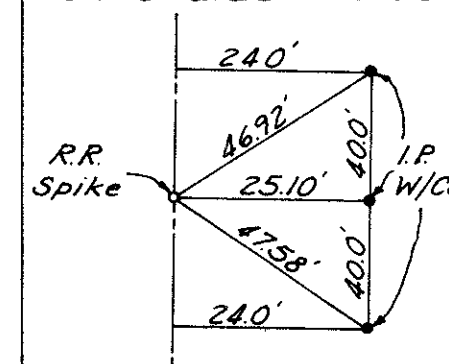


PI Sta. 17+87.09 Ex. S.R. 708 =
 PI Sta. 17+85.61 Prop. S.R. 708 =
 PI Sta. 50+00.00 Prop. TR. 61
 R.R. Spike Set

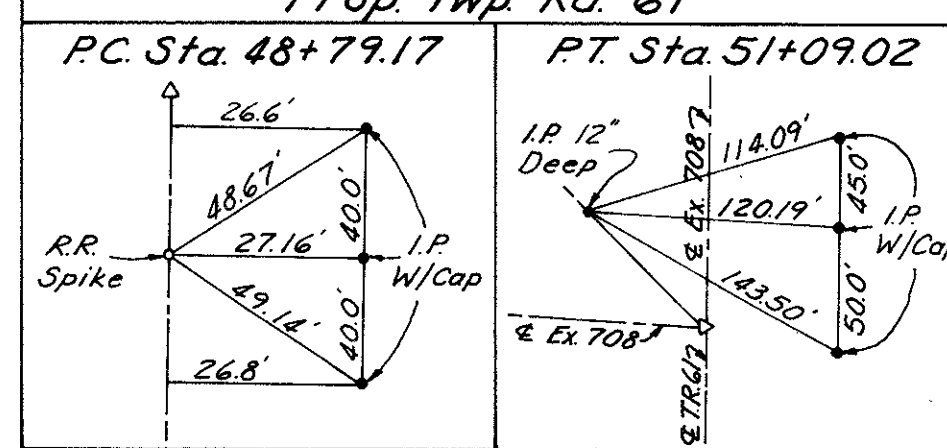
**REFERENCE POINTS
Prop. S.R. 708**



S.T. Sta. 23+73.68



Prop. Twp Rd. 61



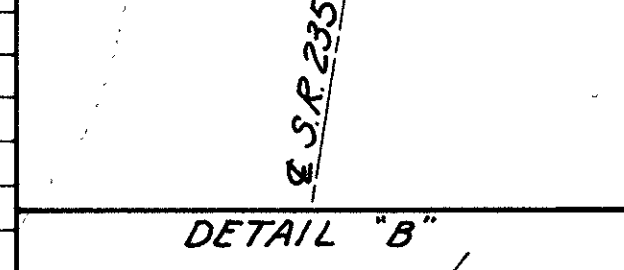
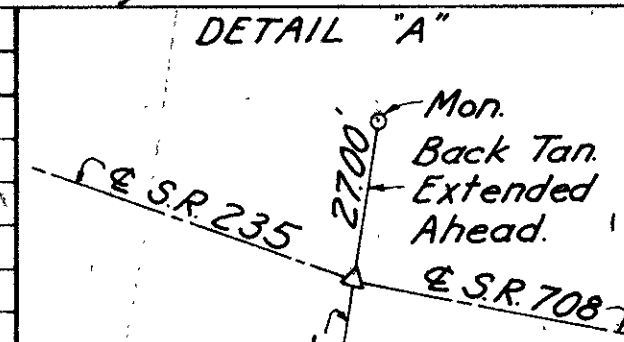
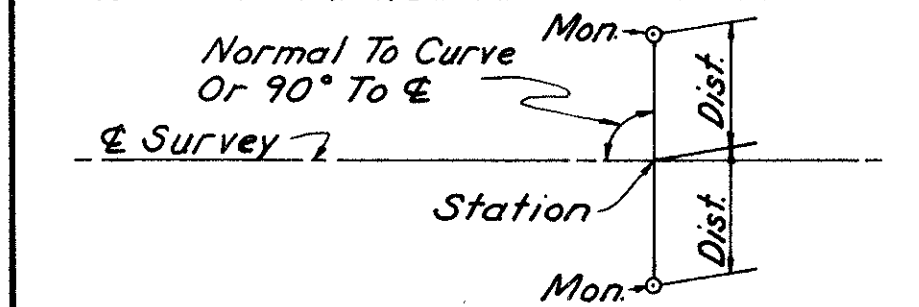
Monument Quantities Carried To Sheet 5 Of 68.

& REFERENCE MONUMENTS TO BE SET BY CONTRACTOR
 See Standard Construction Drawing MC-1

& REFERENCE MONUMENTS

Station	Left	Right
S.R. 235		
POT Sta. 803+00	22.00'	28.00'
PC Sta. 809+99.48	36.00'	21.00'
PI Sta. 812+38.75	See Detail "A"	
PT Sta. 813+98.17	32.00'	21.00'
S.R. 708		
PI Sta. 3+84.10	Set On PI	
T.S. Sta. 8+00.00	21.00'	21.00'
PI Sta. 17+85.61	Set On PI	
POC Sta. 15+86.84	See Detail "B"	
S.T. Sta. 23+73.68	21.00'	21.00'

TYPICAL DETAIL FOR LOCATION OF & REFERENCE MONUMENTS
 & Reference Monuments To Be Set At Stations & Distances As Indicated In Table Above.



Stone Found
 S.E. Corner of the
 N.E. Qtr. of Section 11.

I hereby certify that this plat is a true delineation
 of a survey made by the Ohio Department of
 Transportation in 1985.

Richard R. Helmlinger
 Richard R. Helmlinger - Registered Surveyor #5421

RECORDED
 LOGAN COUNTY
 Date: 11-27-85
 Vol.: 1
 Page: 76

PROPERTY MAP



NOTE: The locations of the underground utilities shown on the plans are as obtained from the owners of the utility as required by Section 153.64 O.R.C.

UTILITY OWNERSHIP

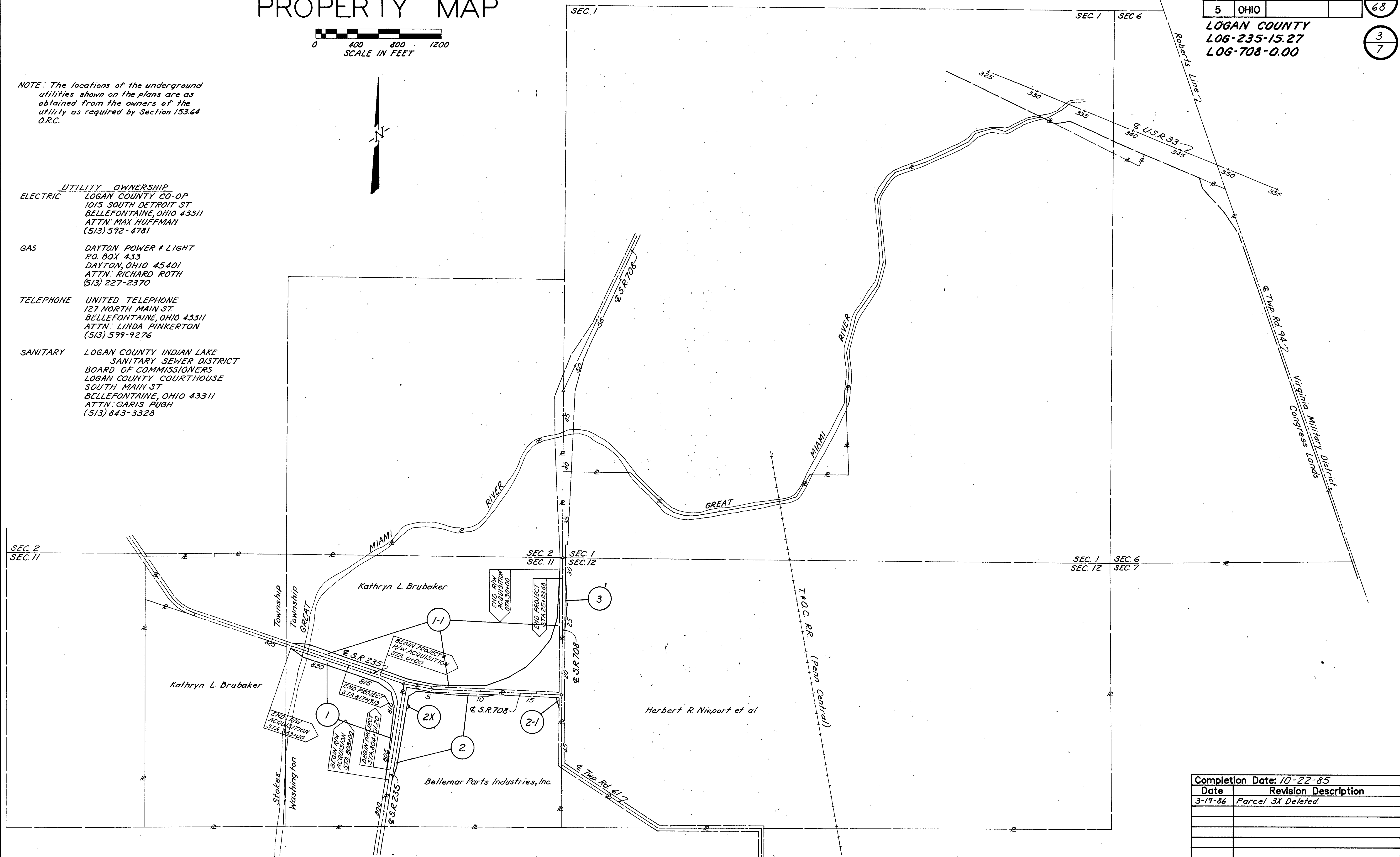
ELECTRIC LOGAN COUNTY CO-OP
1015 SOUTH DETROIT ST.
BELLEFONTAINE, OHIO 43311
ATTN: MAX HUFFMAN
(513) 592-4781

GAS DAYTON POWER & LIGHT
P.O. BOX 433
DAYTON, OHIO 45401
ATTN: RICHARD ROTH
(513) 227-2370

TELEPHONE UNITED TELEPHONE
127 NORTH MAIN ST.
BELLEFONTAINE, OHIO 43311
ATTN: LINDA PINKERTON
(513) 599-9276

SANITARY LOGAN COUNTY INDIAN LAKE
SANITARY SEWER DISTRICT
BOARD OF COMMISSIONERS
LOGAN COUNTY COURTHOUSE
SOUTH MAIN ST.
BELLEFONTAINE, OHIO 43311
ATTN: GARIS PUGH
(513) 843-3328

FHWA REGION	STATE	PROJECT	64
5	OHIO		68
LOGAN COUNTY			3
LOG-235-15.27			7
LOG-708-0.00			



Completion Date: 10-22-85	
Date	Revision Description
3-19-86	Parcel 3X Deleted

TOTAL NUMBER OF ---
3 OWNERSHIPS
0 TOTAL TAKES
0 OWNERSHIPS WITH STRUCTURES INVOLVED
1 OWNERSHIPS WITH "P" ITEMS

SUMMARY OF ADDITIONAL RIGHT OF WAY

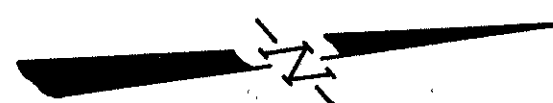
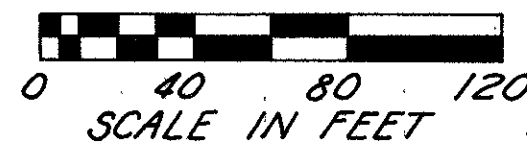
CALC. BY	LOGAN COUNTY	OHIO	65
DATE	LOG-235-15.27	FHWA REGION 5	68
CHKD. BY	LOG-708-0.00		
DATE			
FEDERAL PROJECT	STATE PROJECT	07580(0)	4
			7

PARCEL	OWNER	SHEET NO.	OWNERS RECORD		RECORD AREA	TOTAL P.R.O.	GROSS TAKE	P.R.O. IN TAKE	NET TAKE	STRUC-TURE	NET RESIDUE		TYPE FUND	REMARKS AND PERSONALTY	AS ACQUIRED	
			BOOK	PAGE							LEFT	RIGHT			BOOK	PAGE
1	Kathryn L. Brubaker	5	232	384	206.95±	8.02±	2.858	1.626	1.232	P	192.16±			Deed Tracts 3 & 4 Only. P= Signs.		
1-1	" " "	5,6,7					7.892	2.356	5.536							
2	Bellemar Parts Industries, Inc.	5,6	406	577	49.42±	2.20±	2.022	1.145	0.877			46.31±				
2-1	" " " "	7					0.117	0.086	0.031							
2X	" " " "	5,6					0.020		0.020							
3	Herbert R. Nieport et al	7	391	614	720.835±	2.88±	0.442	0.316	0.126			717.83±				

BRUNING 44-560 25600

REV.	DATE	DESCRIPTION
3X	3-19-86	Deleted

WASHINGTON TOWNSHIP
SEC. 11-T. 7S-R. 8E.



FHWA REGION	STATE	PROJECT	
5	OHIO		

LOGAN COUNTY
LOG-235-15.27
LOG-708-0.00

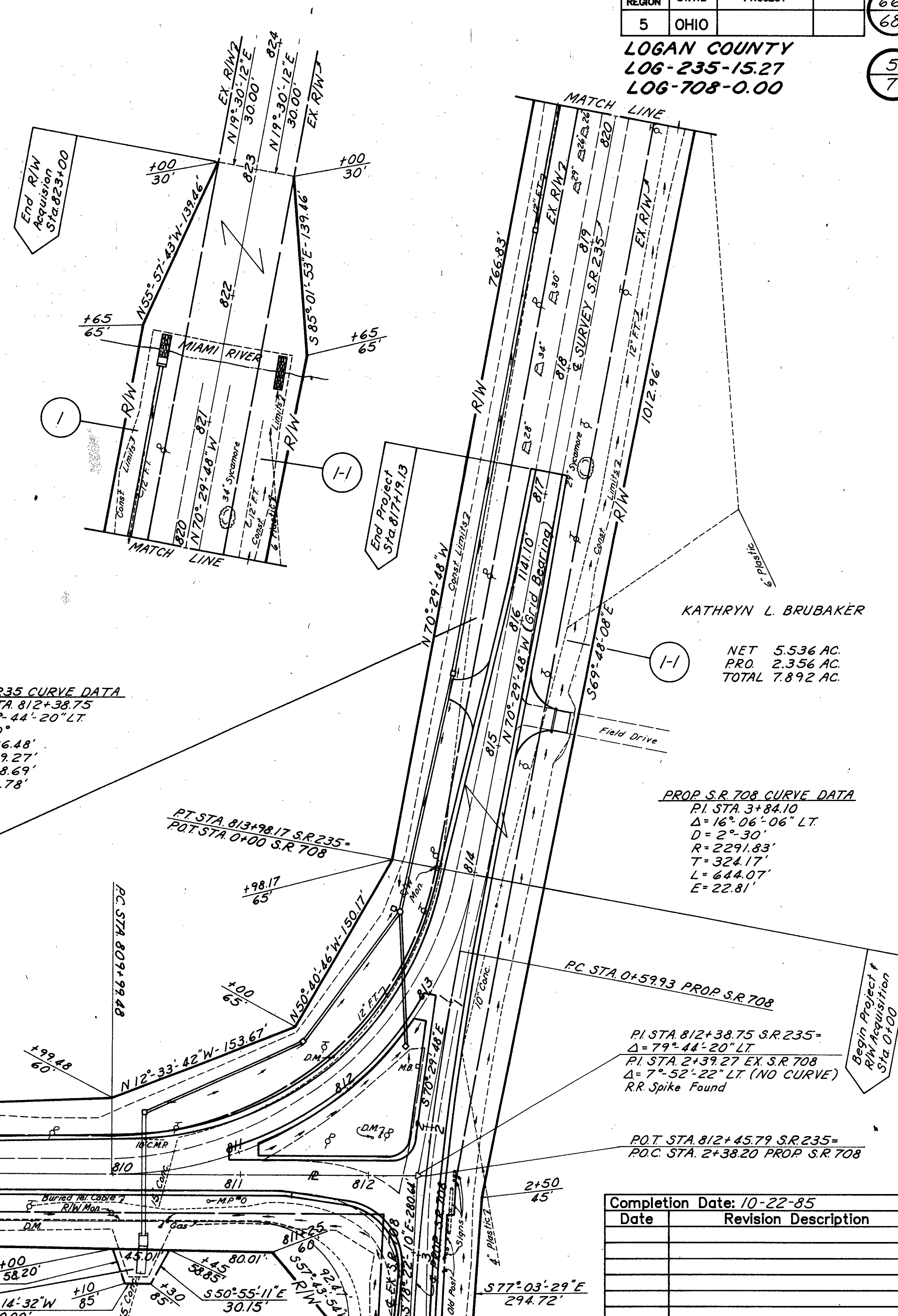
66
68
5
7

Note: For existing R/W of S.R. 235,
see Logan County I.C.H. 27 Sec. B,
R/W plans. R/W=60.

S.R. 708=50'
Comm. Journal W, Page 108, 1927
" " Z, " 19, 1935
" " Z, " 120, 1935

TR 61=50'

All bearings are grid bearings.



S.R. 235 CURVE DATA
PI STA 812+38.75
Δ=79°-44'-20" LT.
D=20°
R=286.48'
T=239.27'
L=398.69'
E=86.78'

PROP. S.R. 708 CURVE DATA
PI STA 3+84.10
Δ=16°-06'-06" LT.
D=2°-30'
R=2291.83'
T=324.17'
L=644.07'
E=22.81'

NET 1.232 AC.
PRO. 1.626 AC.
TOTAL 2.858 AC.

PI STA 812+38.75 S.R. 235-
Δ=79°-44'-20" LT.
PI STA 2+39.27 EX. S.R. 708
Δ=7°-52'-22" LT. (NO CURVE)
RR Spike Found

NET 0.877 AC.
PRO. 1.145 AC.
TOTAL 2.022 AC.

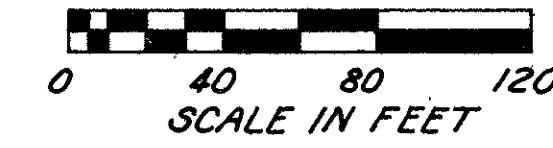
Completion Date: 10-22-85

Date	Revision Description

R/W PLAN S.R. 235 STA 800+00 TO STA 824+00

Note: All bearings are grid bearings.

WASHINGTON TOWNSHIP
SEC. 11-T. 7S-R. 8E.



FHWA REGION	STATE	PROJECT	68
5	OHIO		68
LOGAN COUNTY			7
LOG-235-15.27			7
LOG-708-0.00			

BELLEMAR PARTS INDUSTRIES, INC.

PROP. TR. 61 CURVE DATA
 P.I. STA. 50+00.00
 $\Delta = 43^\circ 40' 17''$ LT.
 $D = 19^\circ 00'$
 $R = 301.56'$
 $T = 120.83'$
 $L = 229.85'$
 $E = 23.31'$

NET 0.031 AC.
 PRO. 0.086 AC.
 TOTAL 0.117 AC.

PROP. S.R. 708 CURVE DATA

P.I. STA. 17+85.61
 $\Delta = 92^\circ 39' 26''$ LT.
 $D = 7^\circ 00'$
 $Ts = 985.61'$
 $Ls = 250.00'$
 $Lc = 1073.68'$
 $Es = 371.45'$
 $R = 818.51'$
 $\theta_s = 8^\circ 45'$
 $Xc = 249.42'$
 $Yc = 12.71'$
 $P = 3.18'$
 $K = 124.90'$
 T.S. STA. 8+00.00 C.S. STA. 21+23.68
 S.C. STA. 10+50.00 S.T. STA. 23+73.68

P.O.C. STA. 15+86.84 PROP. S.R. 708
 P.O.T. STA. 53+59.63 PROP. T.R. 61

KATHRYN L. BRUBAKER

NET 5.536 AC.
 PRO. 2.356 AC.
 TOTAL 7.892 AC.

HERBERT R. NIEPORT, STANLEY G. HINES, DENZIL E. ADKINS,
 JACK L. LUTZ, ROBERT D. TURNER & DONALD E. LEIS

P.I. STA. 17+87.09 EX. S.R. 708
 P.I. STA. 17+85.61 PROP. S.R. 708
 P.I. STA. 50+00 PROP. T.R. 61
 R.R. SPIKE SET

NET 0.126 AC.
 PRO. 0.316 AC.
 TOTAL 0.442 AC.

NOTE: THIS STONE WAS FOUND
 10-5-84 & IS 0.97' LEFT OF
 STA. 30+49.95 AS SHOWN ON
 LOG-708-0.68 R/W PLANS.

1266.04' TO STA. 50+00
 $N0^\circ 44' 40'' E$
 STONE FOUND
 S.E. CORNER OF THE
 N.E. QTR. OF SEC. 11.

Completion Date: 10-22-85	
Date	Revision Description
3-19-86	Parcel 3X Deleted

WASHINGTON TOWNSHIP
SEC. 12-T. 7S-R. 8E.

R/W PLAN S.R. 708 STA. 13+00 TO STA. 32+00 - TWP RD 61