

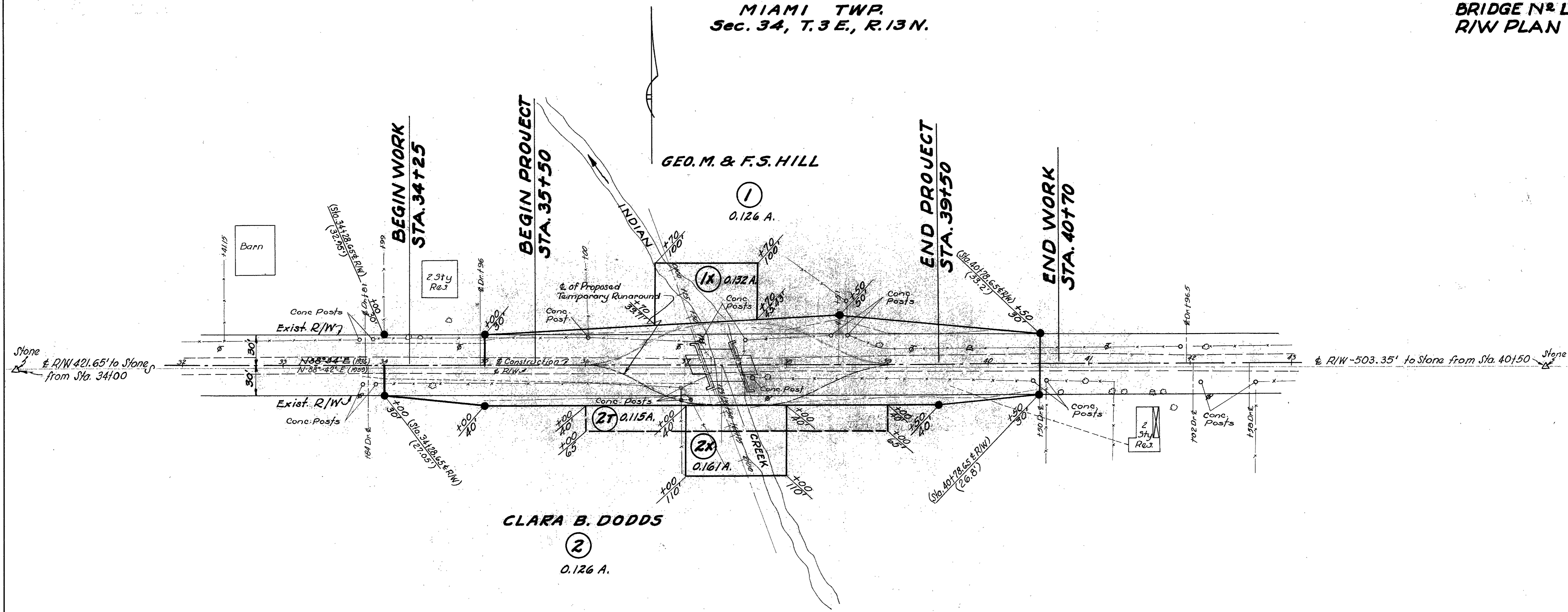
NOTE: Sta. 34+00 To Sta. 40+50 - LOG-706-0.65 (This Sheet) =
 Sta. 34+28.65 to Sta. 40+78.65 - Road No. 67 Miami
 Township, Logan County Ohio - S.H. 865 - Sec. "B" S.R. 706
 Dated 1936.

FED. RD. DIVISION	STATE	PROJECT	FISCAL YEAR
2	OHIO	H.I.F.	1948



LOGAN COUNTY
LOG. 706 ~ 0.65
BRIDGE N^o LD -706-07
R/W PLAN

MIAMI TWP.
Sec. 34, T. 3 E., R. 13 N.



R/W Data:
 Part #1 Geo M. & F. S. Hill
 Signed 3-2-48
 Recorded 5-4-48
 Vol. 192 Page 548
 Part #2 Clara B. Dodds
 Signed 3-4-48
 Recorded 5-4-48
 Vol. 192 Page 549