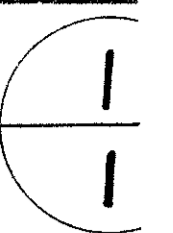


SR 559 D

ROAD NO. 159
ZANE TOWNSHIP
LOGAN COUNTY OHIO
1936

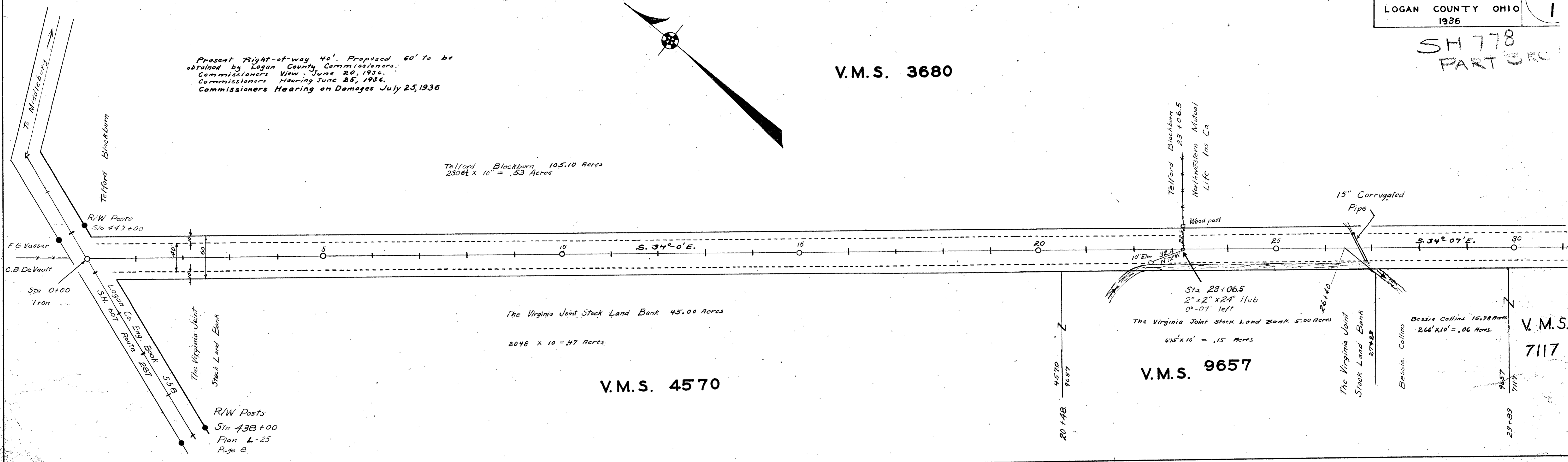


SM 778
PART 3/4

V.M.S. 3680

Present Right-of-way 40'. Proposed 60' to be obtained by Logan County Commissioners. Commissioners View - June 20, 1936. Commissioners Hearing June 25, 1936. Commissioners Hearing on Damages July 25, 1936

Telford Blackburn 105.10 Acres
2306 1/2 x 10' = .53 Acres



The Virginia Joint Stock Land Bank 45.00 Acres

2048 x 10' = .47 Acres

V.M.S. 4570

Sta 23+06.5
2" x 2" x 24" Hub
0°-07' left
The Virginia Joint Stock Land Bank 5.00 Acres
675' x 10' = .15 Acres

V.M.S. 9657

V.M.S. 7117

ROAD 159

40' Road Logan County Road Record No. 1 Page 425
40' Road Logan County Road Record No. 3 Pages 76-79-83
Logan County Engineer's Book No 596 Pages 39-44

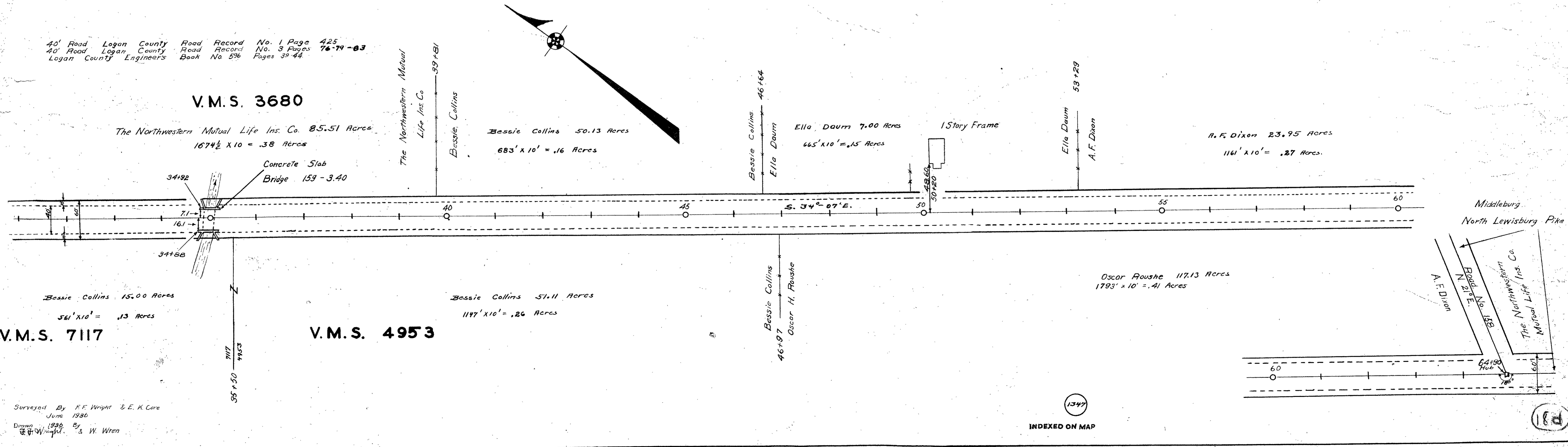
V.M.S. 3680

The Northwestern Mutual Life Ins. Co. 85.51 Acres
1674 1/2 x 10' = .38 Acres

Bessie Collins 50.13 Acres
683' x 10' = .16 Acres

Ella Daum 7.00 Acres
665' x 10' = .15 Acres

A.F. Dixon 23.95 Acres
1161' x 10' = .27 Acres



Bessie Collins 15.00 Acres
561' x 10' = .13 Acres

Bessie Collins 51.11 Acres
1177' x 10' = .26 Acres

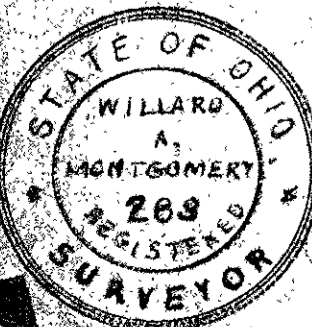
Oscar Roushe 117.13 Acres
1793' x 10' = .41 Acres

V.M.S. 7117

V.M.S. 4953

Middleburg
North Lewisburg Pike

X-24



Surveyed By F.F. Wright & E.K. Core
June 1936
Drawn 1936 By W. Wren

INDEXED ON MAP

X-24