

STATE OF OHIO
DEPARTMENT OF HIGHWAYS

S - US - 334 (6)

FED. RD. DIVISION	STATE	PROJECT
2	OHIO	SUS-334(6)

1
141

LOGAN COUNTY
LOG-47DA-(0.56)
LOG-47-(14.16-14.57)

APPROVED FOR THE CITY OF BELLEFONTAINE

LOG-47DA-(0.56)
LOG-47-(14.16-14.57)

CITY OF BELLEFONTAINE
LAKE TOWNSHIP
LOGAN COUNTY

DATE: 3-30-64 BY: Kenneth H. Hall TITLE: City Engineer

DATE: 3-30-64 BY: Rodney Hughes TITLE: Mayor

THE STANDARD SPECIFICATIONS OF THE STATE OF OHIO DEPARTMENT OF HIGHWAYS, INCLUDING CHANGES AND SUPPLEMENTAL SPECIFICATIONS LISTED IN THE PROPOSAL SHALL GOVERN THIS IMPROVEMENT.

THE RIGHT OF WAY NECESSARY FOR THIS IMPROVEMENT WILL BE PROVIDED BY THE STATE OF OHIO.

I HEREBY APPROVE THESE PLANS AND DECLARE THAT THE MAKING OF THIS IMPROVEMENT WILL REQUIRE THE CLOSING TO TRAFFIC OF THE HIGHWAY AND A DETOUR WILL BE PROVIDED AS SHOWN ON SHEET N° 1. LIMITED ACCESS: THIS IMPROVEMENTS ESPECIALLY DESIGNED FOR THROUGH TRAFFIC AND HAS BEEN DECLARED A LIMITED ACCESS HIGHWAY OR FREEWAY BY ACTION OF THE DIRECTOR OF HIGHWAYS IN ACCORDANCE WITH THE PROVISIONS OF SEC. 3511.02 OF THE REVISED CODE OF OHIO. LIMITED ACCESS FROM STA. 769+25.59 TO STA. 813+41.84 PROP. SR. 47.

APPROVED DATE	4-10-64	DIVISION DEPUTY DIRECTOR
APPROVED DATE		ENGINEER OF BRIDGES
APPROVED DATE		ENGINEER OF LOCATION AND DESIGN
APPROVED DATE		DEPUTY DIRECTOR OF DESIGN AND CONSTRUCTION
APPROVED DATE		DEPUTY DIRECTOR OF RIGHT OF WAY
APPROVED DATE		DEPUTY DIRECTOR OF PLANNING AND PROGRAMMING
APPROVED DATE		FIRST ASSISTANT DIRECTOR
APPROVED DATE		DIRECTOR OF HIGHWAYS

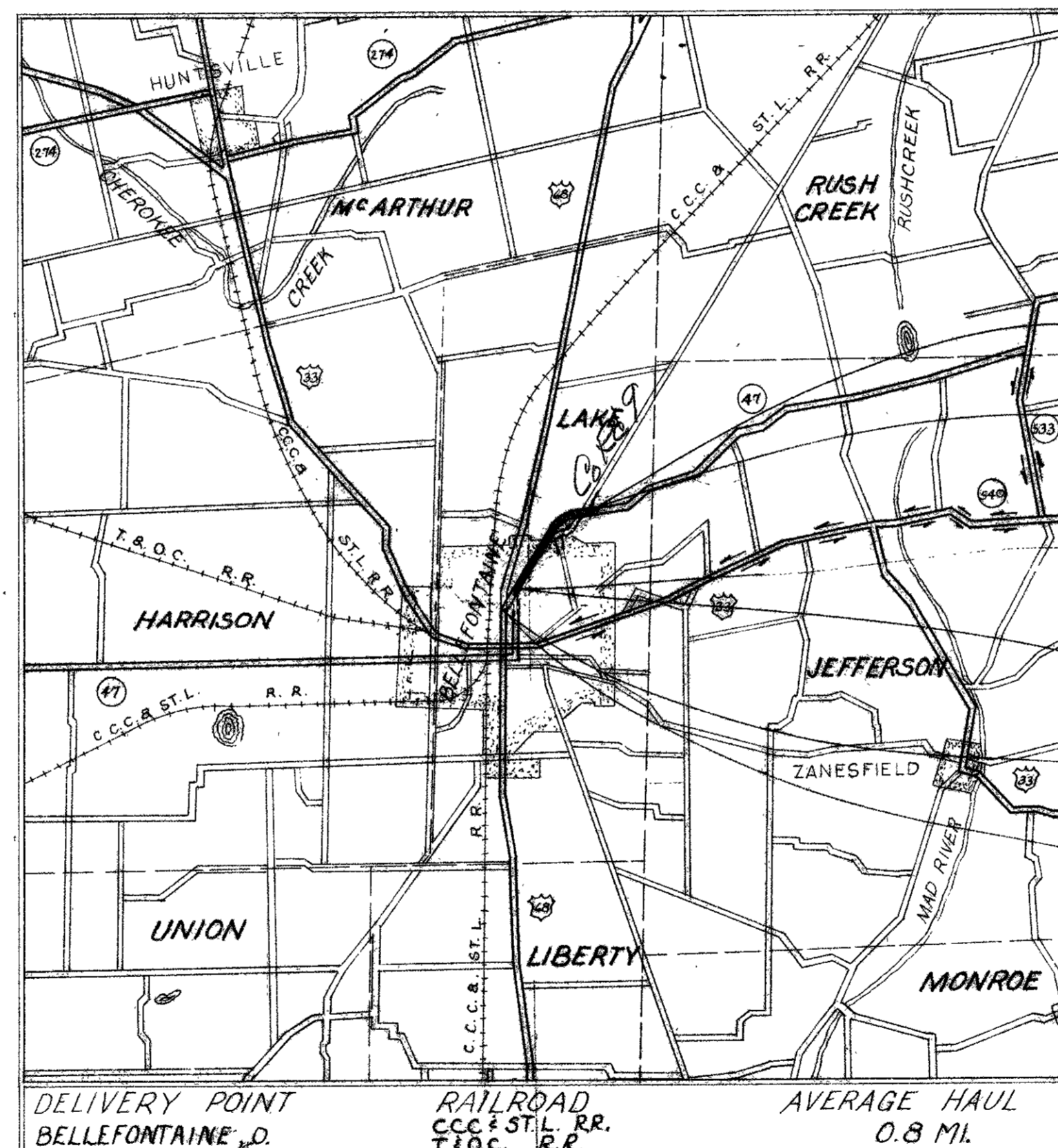
CONVENTIONAL SIGNS

COUNTY LINE	-----
TOWNSHIP LINE	-----
SECTION LINE	-----
CORPORATION LINE	-----
PROPERTY LINE	-----
FENCE LINE	-----
CENTER LINE	-----
POLE LINE	-----
RAILROAD	-----
HEDGE	-----
DRAIN PIPE (NEW)	-----
DRAIN PIPE (OLD)	-----
GUARD RAIL (NEW)	-----
GUARD RAIL (OLD)	-----
TREES & STUMPS TO BE REMOVED	-----
RIW LINE (PROPOSED)	-----
TEMPORARY RIGHT-OF-WAY	-----
LIMITED ACCESS AND RIGHT-OF-WAY	-----
LIMITED ACCESS RIGHT-OF-WAY	-----

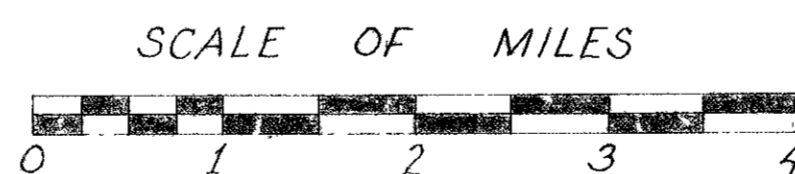
LENGTH OF PROJECT LOG-47DA-(0.56) MUNICIPAL - US-334 (6)
 BEGIN PROJECT STA. 738+98.44
 END PROJECT STA. 748+20.58
 NET LENGTH OF PROJECT LOG-47DA-(0.56) MUNICIPAL = 922.14 LIN. FT. or 0.174 MI.
 BEGIN WORK STA. 738+38.18
 END WORK STA. 748+20.58
 NET LENGTH OF WORK LOG-47DA-(0.56) MUNICIPAL = 982.40 LIN. FT. or 0.186 MI.
 LENGTH OF PROJECT LOG-47-(14.16-14.57) MUNICIPAL
 BEGIN PROJECT STA. 748+20.58
 CORPORATION LINE STA. 769+25.59
 NET LENGTH OF PROJECT LOG-47-(14.16-14.57) MUNICIPAL = 2105.01 LIN. FT. or 0.398 MI.
 NET LENGTH OF WORK LOG-47-(14.16-14.57) MUNICIPAL = 2105.01 LIN. FT. or 0.398 MI.
 LENGTH OF PROJECT LOG-47-(14.16-14.57) - RURAL - S-334 (6)
 CORPORATION LINE STA. 769+25.59
 END PROJECT STA. 813+41.84
 END WORK STA. 813+96.84
 ADD FOR DOWELL ROAD APPROACH = 826.12 LIN. FT.
 ADD FOR ALLISON ROAD APPROACH = 516.52 LIN. FT.
 ADD FOR RD APPROACH RT STA 786+22.70 = 460.70 LIN. FT.
 ADD FOR RD APPROACH RT STA 802+7500 = 313.82 LIN. FT.
 ADD FOR CO. RD #9 = 394.85 LIN. FT.
 ADD FOR FUTURE PROP. US 2.33 = 1,720.66 LIN. FT.
 NET LENGTH OF PROJECT LOG-47-(14.16-14.57) RURAL = 4471.25 LIN. FT. or 0.846 MI.
 NET LENGTH OF WORK LOG-47-(14.16-14.57) RURAL = 8712.92 LIN. FT. or 1.650 MI.
 TOTAL NET LENGTH OF PROJECT = 7443.40 LIN. FT. or 1.409 MI.
 TOTAL NET LENGTH OF WORK = 11,800.33 LIN. FT. or 2.234 MI.

INDEX OF SHEETS

TITLE SHEETS	1
SCHEMATIC PLAN	2
TYPICAL SECTIONS	3-4
GENERAL NOTES	5-6
SPECIAL DETAILS & SYMBOLS	7
SUPERELEVATION TABLES	8-9
CALCULATIONS	10-11
GENERAL SUMMARY	12-13
PLAN & PROFILE	14-26
X-SECTIONS	27-77
ROAD APPROACHES	78-120
STRUCTURES	121-130
RIGHT-OF-WAY PLAN	131-141



LOCATION PLAN



PORTION TO BE IMPROVED	=====
STATE HIGHWAYS	=====
OTHER ROADS	=====
DETOUR	-----

SCALES

PLAN	0 20 40 60 80 100
PROFILE HORIZONTAL	0 2 4 6 8 10
PROFILE VERTICAL	0 10 20 30 40
CROSS SECTIONS	0 10 20 30 40
PLAN & PROFILE HORIZ.	0 1 2 3 4
PROFILE VERTICAL	0 1 2 3 4
CROSS SECTIONS	0 1 2 3 4

STANDARD	DRAWINGS
L-1	4-1-50
HW-E	2-1-63
FACT-1	3-8-63
FACT-2	3-8-63
DR-1	1-3-55
RF-1	7-15-58
T-35	1-2-56
T-21-25	8-1-56
L-3	4-1-50
L-3-A	4-1-50
F-8 MH N° 1	2-1-63
I-1	11-15-60
F-8 C.B. F-2 AC B	2-1-63
F-8 C.B. N° 3	2-1-63
F-8 C.B. N° 3-A	2-1-63
I-8 I. N° 1	2-1-63
I-12	2-1-63
G-7.07	6-1-56

SUPPLEMENTAL SPECIFICATIONS			
N°	Date	N°	Date

FILE NUMBER	LOGAN COUNTY LOG-47DA-(0.56); LOG-47-(14.16-14.57)
DATE OF LETTING	
CONTRACT N°	

DEPARTMENT OF COMMERCE
BUREAU OF PUBLIC ROADS

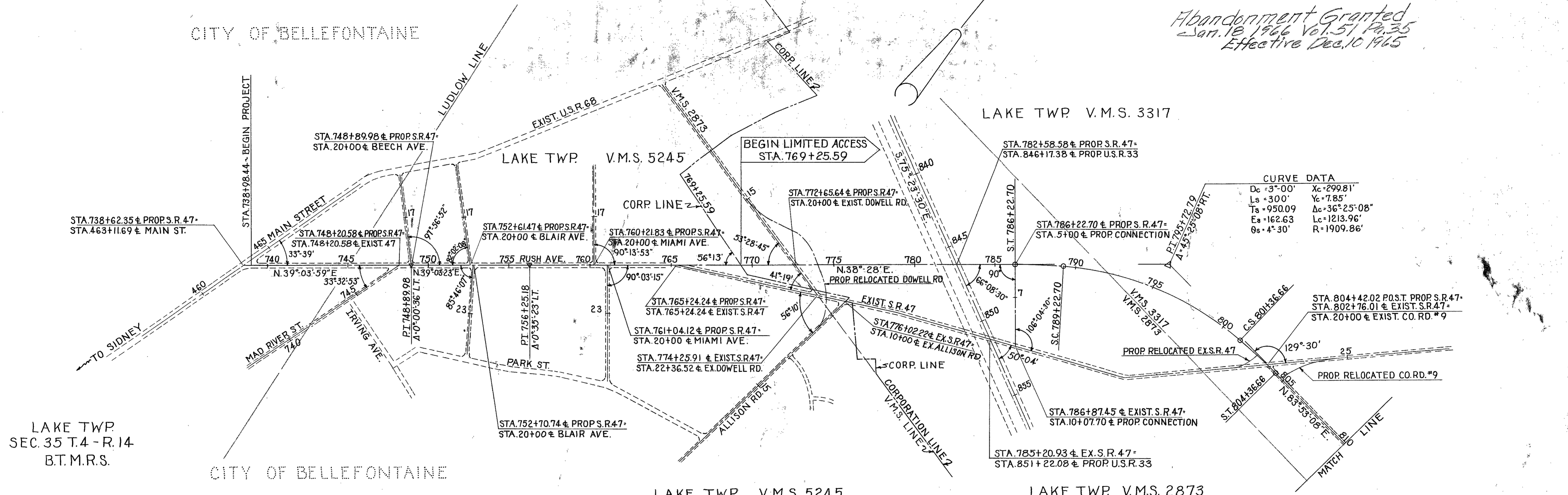
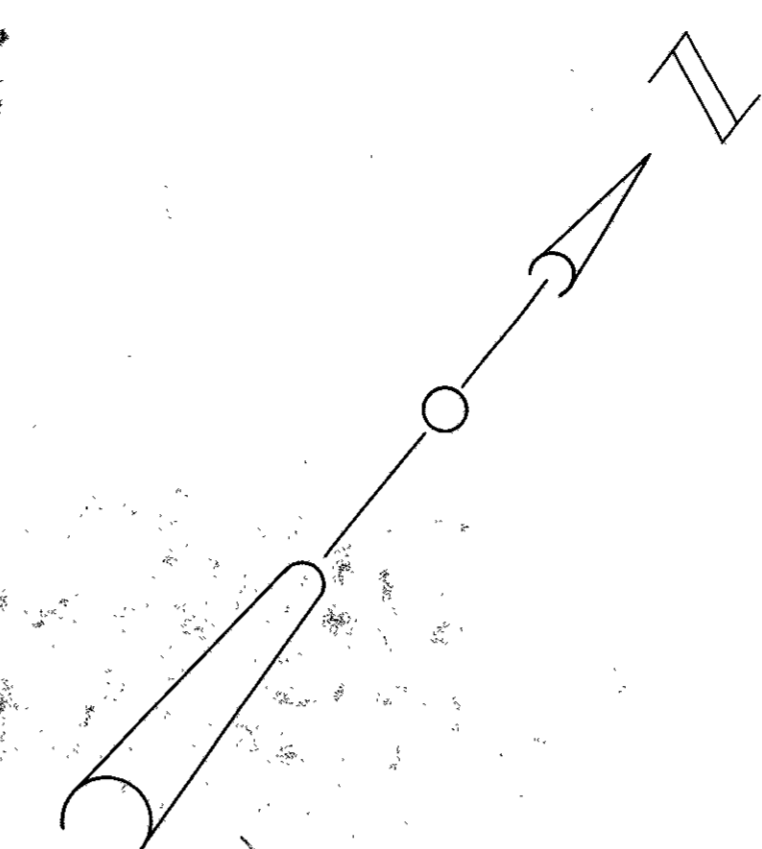
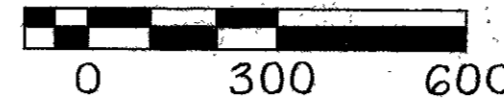
APPROVED: _____
DIVISION ENGINEER DATE

LOCATION PLAN

FED. RD. DIVISION	STATE	PROJECT	1
2	OHIO	1964	1

LOGAN COUNTY
 LOG-47DA ~ (0.56)
 LOG-47 ~ (14.16-14.57)
 LIMITED ACCESS

*Abandonment Granted
 Jan. 18 1966 Vol. 51 P. 35
 Effective Dec. 10 1965*



CURVE DATA

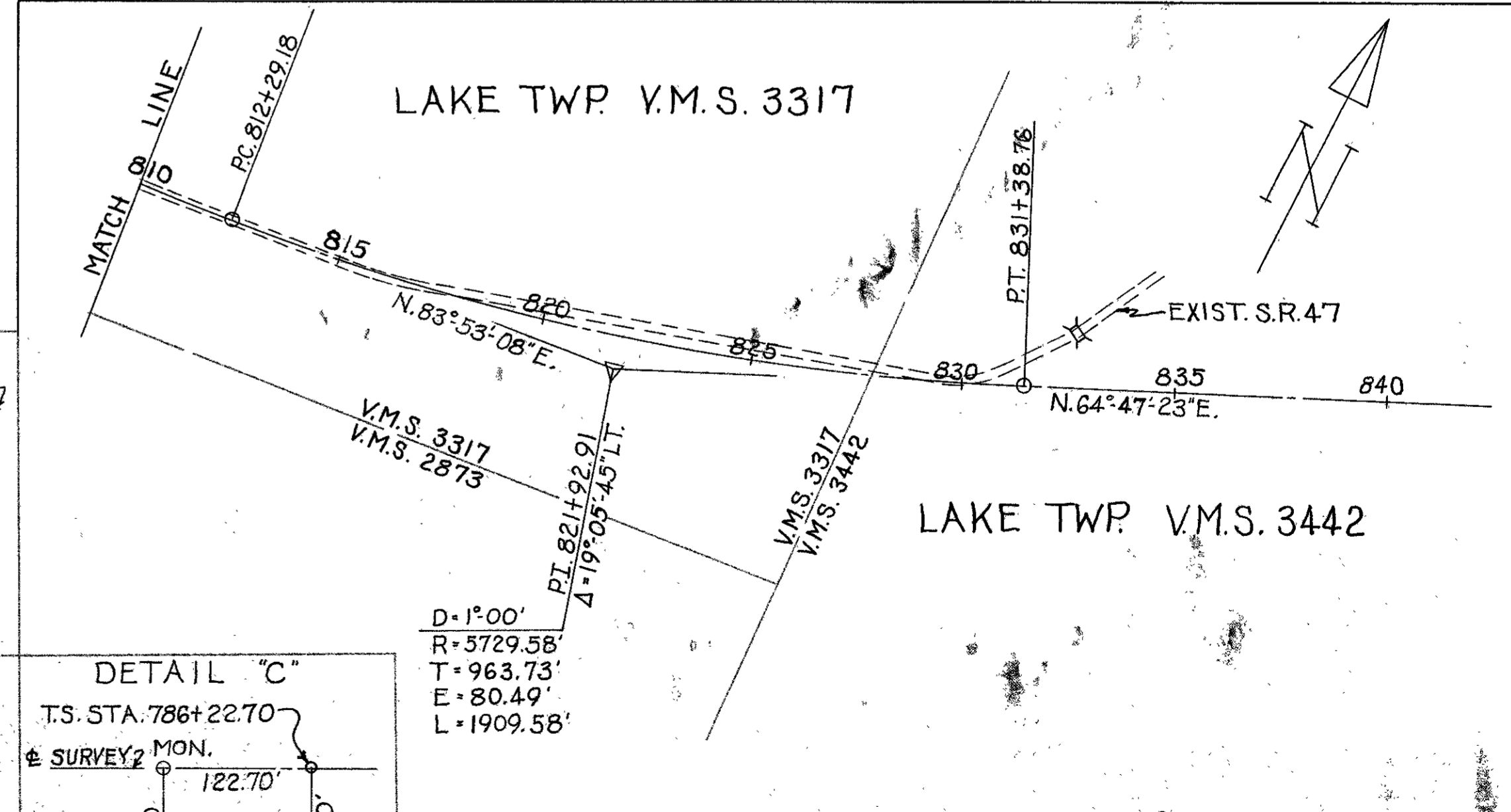
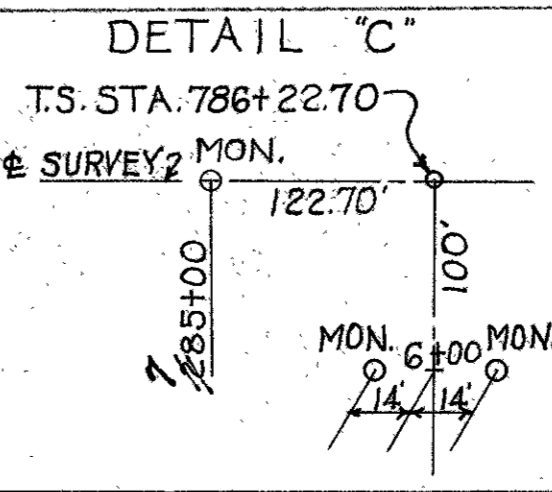
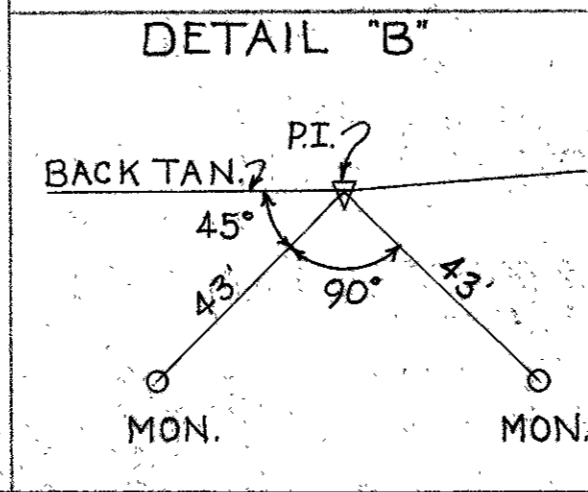
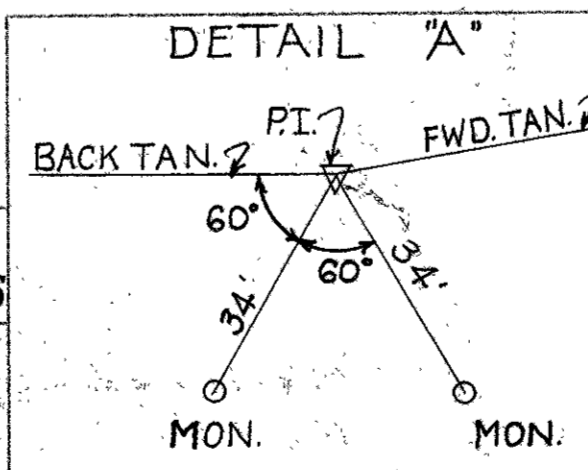
Dc = 3'-00"	Xc = 299.81'
Ls = 300'	Yc = 7.85'
Ts = 950.09'	Δc = 36° 25' 08"
Ea = 162.63'	Lc = 1213.96'
Os = 4° 30'	R = 1909.86'

MONUMENTS SET BY *Wilson Taglieber E.T. Jan. 1966*

REFERENCE POINT MONUMENTS TO BE SET

STATION	DISTANCE FROM	STATION	DISTANCE FROM	STATION	DISTANCE FROM	STATION	DISTANCE FROM	STATION	DISTANCE FROM
	LT. RT.		LT. RT.		LT. RT.		LT. RT.		LT. RT.
742+00	28.5' 28.5'	M.P. 795+29.68	P.O.C.	EXIST. DOWELL ROAD		PROP. APPROACH ROAD RT. STA. 786+22.70		EXIST. CO. RD. #9	
PI. 748+89.98	SEE DETAIL A	C.S. 801+36.66		13+00	65'	6+00	14'	15+50	30'
753+00	29.5' 29.5'	S.T. 804+36.66	P.O.T.	13+45	30'	9+00	"	17+50	80'
PI. 756+25.18	SEE DETAIL B	807+00	<i>Culvert Conc Median</i>	15+00	45'				
762+00	29.5' 29.5'			16+20	30'				
770+00	P.O.T.	MON. AHEAD TO BE SET		798+70	30'				
777+00	"	ON NEXT PROJECT		EXIST. ALLISON ROAD		799+00	30'		
785+00	"			12+35	30'	800+40	55'		
T.S. 786+22.70	SEE DETAIL C			13+90	30'	800+65	65'		
S.C. 789+22.70	P.O.C.								

TYPICAL DETAIL FOR LOCATION OF MONUMENTS & REFERENCE POINTS TO BE SET FOR STA. & DISTANCE LT. & RT. SEE TABLE LEFT.



RECORDED	APPROVED
3-9-64	<i>Joe M. Bowen</i>
VOL. 1	DATE 2-25-64
PAGE 23	RIGHT-OF-WAY ENGINEER DIVISION N° 7
	REGISTERED SURVEYOR N° 3128

SUMMARY OF ADDITIONAL RIGHT OF WAY REQUIRED

TOTAL NUMBER OF OWNERS - 81

JOB NUMBER 07383

FED. RD. DIVISION	STATE	PROJECT
2	OHIO	1964

131
141

LOGAN COUNTY
LOG-47 DA - (0.56)
LOG-47 - (14.16 - 14.57)

PAR. NO.	OWNER	DEED RECORDED		DEED AREA	TO BE ACQUIRED		RESIDUE		SHEET NO.	REMARKS	RECORDING DATA			PAR. NO.	OWNER	DEED RECORDED		DEED AREA	TO BE ACQUIRED		RESIDUE		SHEET NO.	REMARKS	RECORDING DATA		
		VOL.	PAGE		LAND	BLDG.	LEFT	RIGHT			VOL.	PG.	DATE			VOL.	PAGE		LAND	BLDG.	LEFT	RIGHT			VOL.	PG.	DATE
1T	CARL V. LUGGAR, ET AL	253	460		0.003				3	Lot 1054				30	IRMA G. BURTON	276	349		0.008			4	Lot 2417	294-158-60-3-20-64			
2T	EMMETT RICHARD MORRIS, ET AL	261	168		0.007				3	Lot 1055, Pt. Lot 1054				30T	" " "				0.006			4					
3	SUN OIL CO.	260	418		0.0005				3		305-349-51-11-12-65		31	FLOYD A. CRETCHER	174	483		0.009			4	Lot 3534	294-161-63-3-20-64				
3T	" " "				0.039				3				31T	" " "				0.009			4						
4T	BLANCHE DARING	172 266	361 365		0.014				3	Lots 1056-1057			32	MAE HAESHFIELD	292	354		0.008			4	Lot 2416	294-164-66-3-20-64				
5T	WILLIAM S. COLUMBER, ET AL	266	365		0.007				3	Pt. Lot 1058			32T	" " "				0.014			4						
6T	ARCHIE C. DULIN	169	175	0.15	0.009				3,4				33	RALPH P. DILL, ET AL	188	555		0.009			4	Lot 2415	294-167-9-3-20-64				
7T	EDNA LEMIEU, DEC'D VOEGELE, ET AL	133	595		0.001				4	Pt. Lot 1058	CASE-27613		33T	" " " " " "				0.008			4						
7T1	" " "				0.003				4				34	IVA E. FLINN	277	32		0.016			4	Pt. Lot 3535	298-203-5-9-25-64				
8T	JOHN W. ARMSTRONG	205	62	0.17	0.004				4				34T	" " "				0.037			4						
9T	LOWELL EMERSON OVERLY	227	568	0.07	0.009				4				35	HUMBLE CONSTRUCTION CO.	268	378		0.019			4,5	Pt. Lot 2482	295-359-61-5-29-64				
10T	WILLIAM R. HAAS, ET AL	198	279	0.13	0.005				4				35T	" " "				0.038			4,5						
11T	CHARLOTTE WEBSTER	158	294		0.013				4	Lot 1039			36	ROBERT C. EMERY	161	26		0.016			5	Lots 2413-2414	298-206-8-9-25-64				
12T	WILLIAM S. COLUMBER, ET AL	203	318	0.12	0.010				4				36T	" " " " " "	181	106		0.023			5	Pt. Lot 2412					
13	NOT USED												37	JAMES JOSEPH SMITH	227	499		0.016			5	Pt. Lot 2412	301-317-19-3-12-65				
14T	THOMAS C. VANICA, ET AL	190	489		0.015				4	Lot 1038			37T	" " "				0.016			5						
15T	NEIL E. WEYMOUTH, ET AL	233	529		0.015				4	Lot 1037	294-150-51-3-20-64		38	EDWARD L. REAMES ET AL	288	468		0.010			5	Pt. Lot 2461	297-923-7-31-64				
16T	CHARLES J. KELTY, ET AL	170	33		0.031				4	Lot 1036			38T	" " " " " "				0.014			5						
17T	HAROLD C. FOREMAN, ET AL	195	16	0.53	0.029				4				39	HOWARD J. KAUFFMAN, ET AL	179	202	0.23	0.007		0.19		5		295-362-4-3-29-64			
18T	LYDIA SMUCKER	162	333		0.014				4	Pt. Lots 1035-1036			39T	" " " " " "				0.004			5						
19	NOT USED												40	MAX J. SHEARER, ET AL	195	394		0.008			5	Pt. Lot 2481	296-370-2-7-3-64				
20	GILLESPIE OIL CO. INC.	23	13		0.00125				4		301-314-16-3-12-65		40T	" " " " " "				0.010			5						
21T	HAROLD C. FOREMAN, ET AL	-	-	-	0.001				4	Included in 17T			41	CHESTER L. ARTHUR	183 184	368 498		0.010			5	Pt. Lot 2480	298-224-6-9-25-64				
22	HARVEY DALE JACOBS	162	632	0.55	0.001				4		294-152-54-3-20-64		41T	" " " " " "				0.011			5						
22T	" " "				0.013				4				42	HARRY PRALL	247 182	412 394	1.00	0.007		0.85		5		295-365-7-5-29-64			
23	MIRIAM J. LINDBLOM, L.E., ET AL	271	516	0.24	0.004				4		CASE-27597		42T	" " "				0.005			5						
23T	" " " " " "				0.013				4				43	CARL B. FULLERTON	255	443	1.07	0.020		0.96		5		295-356-8-5-29-64			
24	CHARLES A. MILLER, ET AL	284	232		0.007				4	Lot 2422	294-152-4-3-20-64		43T	" " "				0.030			5						
24T	" " " " " "				0.007				4				44	MILLARD H. ROBB, ET AL	283	520		0.009			5	Pt. Lot 2480	298-209-11-9-25-64				
25T	JAMES R. GOSLEE JR., ET AL	197	75	1.10	0.010				4				44T	" " " " " "				0.010			5						
26	JAMES ROBERT MILLER, ET AL	244	403	0.33	0.003				4		298-200-2-9-25-64		45	GOLDIE M. TAYLOR	255	446		0.019			5	Lot 2479	298-227-9-25-64				
26T	" " " " " "				0.027				4				45T	" " "				0.021			5						
27	WILLIAM H. SHORT, ET AL	276	245	0.50	0.040				4	Pt. Lot 3533	298-221-23-9-25-64		46	FRANCIS C. JENKINS	256 257 174	245 37 393	2.00	0.030		1.84		5		297-90-1-7-31-64			
27T	" " " " " "	280	469		0.062				4				46T	" " "				0.051			5						
28	J. CLAYTON POWERS, ET AL	287	194		0.008				4	Lot 2420	295-368-70-5-29-64		47	EDWIN F. STANG, ET AL	155	244		0.019			5	Lot 2478	296-373-5-7-3-64				
28T	" " " " " "				0.012				4				47T	" " " " " "				0.035			5						
29	FLOYD B. PETTY, ET AL	176	48		0.016				4	Lots 2418-2419	294-155-57-3-20-64		48	GLEN RUDASIL, ET AL	213	280		0.016			5	Lot 3554					
29T	" " " " " "				0.012				4				48T	" " " " " "				0.021			5						
													49	GILBERT P. RITTER, ET AL	275	506	1.04	0.018		1.00		5		296-379-81-7-3-64			
													49T	" " " " " "				0.021			5						
													50	J. F. TURNER, ET AL	194	131		0.014			5	Lot 3555	CASE-27604				
													50T	" " " " " "				0.017			5						
													51	GILBERT B. RITTER, ET AL	-	-	-	0.018			5	Included in 49	296-382-4-7-3-64				
													51T	" " " " " "				0.024			5						

SUMMARY OF ADDITIONAL RIGHT OF WAY REQUIRED

JOB NUMBER 07383

LOGAN COUNTY
LOG-47 DA - (0.56)
LOG-47 - (14.16 - 14.57)

PAR. NO.	OWNER	DEED RECORDED		DEED AREA	TO BE ACQUIRED		RESIDUE		SHEET NO.	REMARKS	RECORDING DATA			PAR. NO.	OWNER	DEED RECORDED		DEED AREA	TO BE ACQUIRED		RESIDUE		SHEET NO.	REMARKS	RECORDING DATA		
		VOL.	PAGE		LAND	BLDG.	LEFT	RIGHT			VOL.	PG.	DATE			VOL.	PAGE		LAND	BLDG.	LEFT	RIGHT			VOL.	PG.	DATE
52	DALTON A. YOUNG, ET AL	157	351		0.031				5	Lots 3556-3557	295-377-9-5-29-64		76LA	FOREST G. JACOBS	284	275		0.168				9	Lots 2 & 3 Woodland Subd.	299-283-86-11-13-64			
52T	" " " " " "				0.041				5				76	" " " " " "				0.088				9					
53	HARRY W. PRALL				0.021				5	Included in 48	295-371-3-5-29-64		77T	RAY K. WOOD, ET AL	231	351	1.00	0.01				9					
53T	" " " " " "				0.024				5				78T	DONALD F. HEIBY, ET AL	250	283	0.89	0.01				9					
54	GEORGE M. ELLIOTT, ET AL	285	551	1.00	0.022		0.88		5		295-353-5-5-29-64		79WL	JOHN B. TRAU, ET AL (DEC'D)	204	577		0.689			9	Lots 4 & 5 Woodland Subd.	303-307-11-6-25-65				
54T	" " " " " "				0.032				5				79T	" " " " " "				0.01			9						
55	WALTER G. THOMPSON, ET AL	158	317	6.33	0.032		6.30		5,6	Lot 2473	295-374-6-5-29-64		79A	" " " " " "				0.007			9						
55T	" " " " " "				0.062				5,6				80LA	JOHN B. TRAU, ET AL (DEC'D)	204	577	24845*	2.81		244.52*	9,10	Signet 8-13-65					
56	ROBERT L. BRACHNEY ET AL	206	165	6.62	0.827		3.41		6		301-268-72-3-12-65		81LA	WILLIAM T. HARNEY, ET AL	273	335	3.35	0.339		2.81		9		299-505-07-11-27-64			
56T	" " " " " "	204	127		0.052				5,6				82LA	CHARELS J. WINKLE, ET AL	293	63	4.23	1.00		2.67		9,10		302-57-59-4-16-65			
56WL	" " " " " "				1.45				6																		
56A	" " " " " "				0.03				6																		
56AX	" " " " " "				0.02				6																		
57	CLIFFORD H. HERTENSTEIN	243	291	2.00	0.13		1.68		6		301-310-13-3-12-65		83WL	CLEMENT STEVEN MIHOZI, ET AL	291	292		0.245			9	Lots 6 & 7 Woodland Subd.	302-32-33-4-16-65				
57X	" " " " " "				0.01				6				84LA	JUANITA HUBER	287	587	16.94	0.59		16.03		10		317-287-90-11-3-67			
57T	" " " " " "				0.023				6				85LA	HELEN GLADYS BEATY	212	156	6.14	0.24		5.90		10		317-284-86-11-3-67			
58	NOT USED																										
59	BERNICE LUCILLE RUTLEDGE	286	311	1.34	0.13		1.13		6		298-212-14-9-25-64									0.62		11		299-268-70-11-13-64			
60	RONALD HARLEY BRANHAM	241	58	1.10	0.28		0.71		6		296-385-7-7-6-64		6WL	WILLIAM H. SCHRADER	201	334	7.35	0.02			7.33		11		298-425-27-10-9-64		
61WL	ALTA M. PITTS, ET AL	231	517	22.70	7.56		12.40	1.42	6,7				7WL	DON M. HILLIKER, ET AL	258	517	18.86	0.711				11	Holly Hill Subdivision	299-271-73-11-13-64			
61	" " " " " "				1.07				6		300-644-8-2-15-65		7AWL	" " " " " "				1.641			11		299-274-76-11-13-64				
61X	" " " " " "				0.04				6				78WL	" " " " " "				0.627			11		299-277-79-11-13-64				
61Y	" " " " " "				0.03				7				7CWL	" " " " " "				0.006			11		299-280-82-11-13-64				
62	CITY OF BELLEFONTAINE (FEE)	266	208	0.65	0.318		0.06		6		298-215-17-9-25-64																
63	JAMES F. LIFORD, ET AL (LAND CONTRACT)	224	332	0.32	0.036		0.23		6		298-230-32-9-25-64																
63T	" " " " " "				0.007				6																		
64	CLETIS C. CARMEAN, ET AL	290	376	0.61	0.007		0.603		6		296-388-90-7-3-64																
65	NOT USED																										
66WL	MARY M. HERTENSTEIN	233	276	13.39	6.02	Yes	4.06	2.16	7,8																		
66X	" " " " " "				0.009				8																		
66	" " " " " "				1.01				7		300-69-72-12-18-64																
67WL	MURL MILLER, ET AL	221	56	2.11	1.45	Yes	0.26		7		299-502-04-11-27-64																
67	" " " " " "				0.16				7																		
68	EMMA L. SHORT	241	498	4.00	0.13		3.26		7		301-263-4-3-12-64																
68WL	" " " " " "				0.51				8																		
69WL	PAUL R. ROBERTS, ET AL	274	114	30.16	1.51		0.05		8		299-499-01-11-27-64																
70	HARRY E. BOYER	264	523	4.74	0.0061		0.04		8		CASE 27622																
70WL	" " " " " "				0.97				8																		
70X	" " " " " "				0.04				9																		
71WL	CYRIL STEVENS	227	119	2.57	1.71	Yes	0.08	0.40	8,9																		
71	" " " " " "				0.126				9		CASE 27573																
71X	" " " " " "				0.05				9																		
72WL	RICHARD H. CRANDALL	279	436	7.47	0.42		7.05		8,9		CASE 27598																
72T	" " " " " "				0.05				9																		
73WL	NORMAN CHAMBERS	275	117	0.77	0.310	Yes	0.41		9		296-509-11-7-17-64																
74	NOT USED																										
75LA	VERLE M. FERGUSON, ET AL * WL	209	35	2.34	0.463		4.04		9		332-902-1-20-70																
75	" " " " " " * WL	217	207		0.288				9		298-233-37-9-25-64																

EMSEMENTS: changed to FEE Simple 1/28/70
Recorded Vol 332 Page 902

* TAX AREA

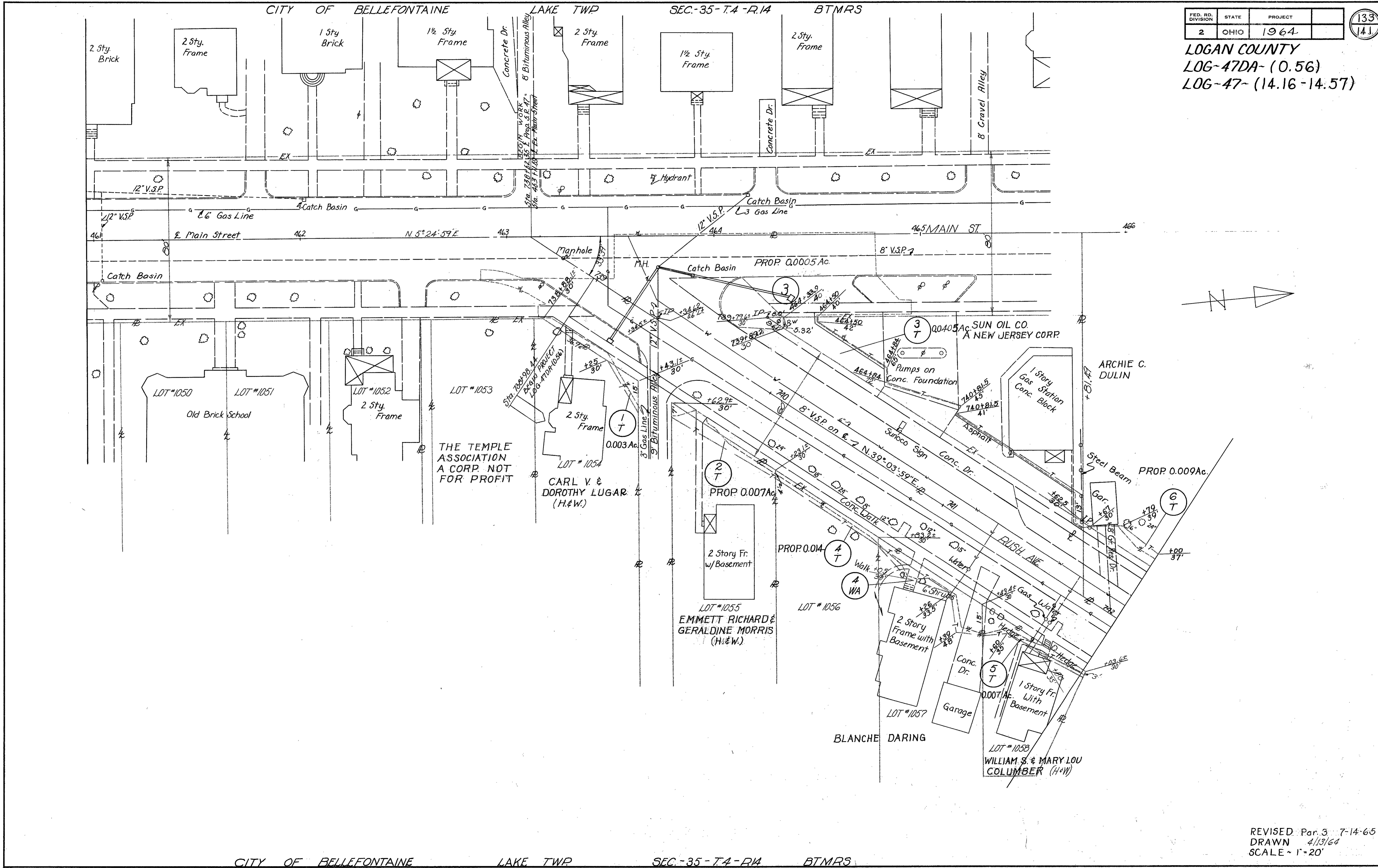
+ INCLUDES EXIST R/W NOT DESCRIBED WITH TAKE AREA

REVISED: 11-24-64
REVISED: 11-14-64
REVISED: 10-22-64
REVISED: 5-15-64

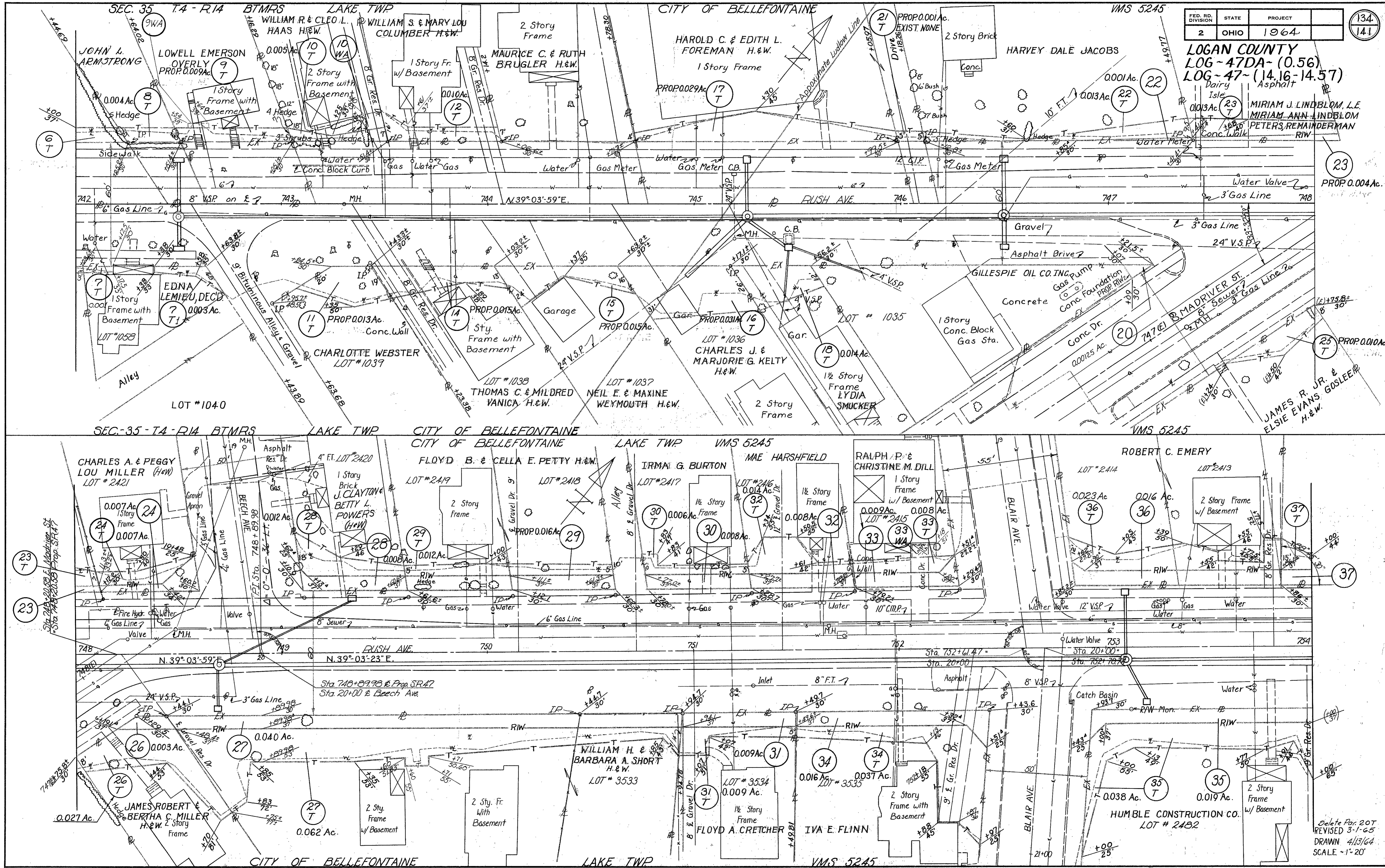
FED. RD. DIVISION	STATE	PROJECT	
2	OHIO	1964	

133
141

LOGAN COUNTY
LOG-47DA- (0.56)
LOG-47- (14.16-14.57)



REVISED Par. 3 7-14-65
DRAWN 4/13/64
SCALE 1"=20'



FED. RD. DIVISION	STATE	PROJECT	
2	OHIO	1964	

LOGAN COUNTY
 LOG-47DA-(0.56)
 LOG-47-(14.16-14.57)
 Dairy Asphalt
 MIRIAM J. LINDBLOM, L.E.
 MIRIAM ANN LINDBLOM
 PETERS, REMAINDERMAN
 R.I.W.

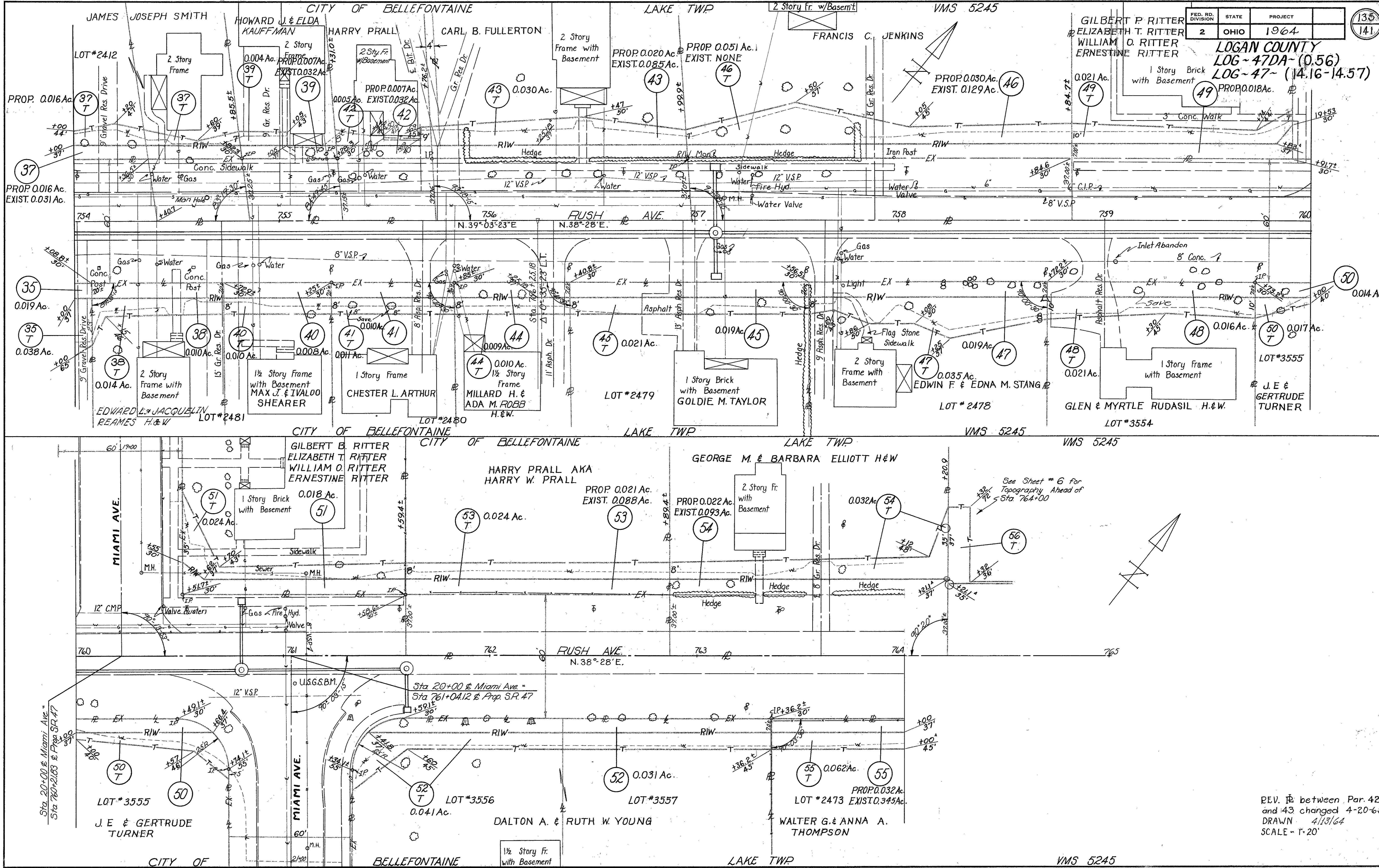
23
 PROP. 0.004 Ac.

25
 PROP. 0.010 Ac.

37
 100.44'

Delete Par. 20T
 REVISED 3-1-65
 DRAWN 4/13/64
 SCALE - 1" = 20'

R/W PLAN - STA. 742+00 TO STA. 754+00 - SHEET 4 OF 11



FED. RD. DIVISION	STATE	PROJECT	135 141
2	OHIO	1964	

LOGAN COUNTY
LOG-47DA-(0.56)
LOG-47-(14.16-14.57)

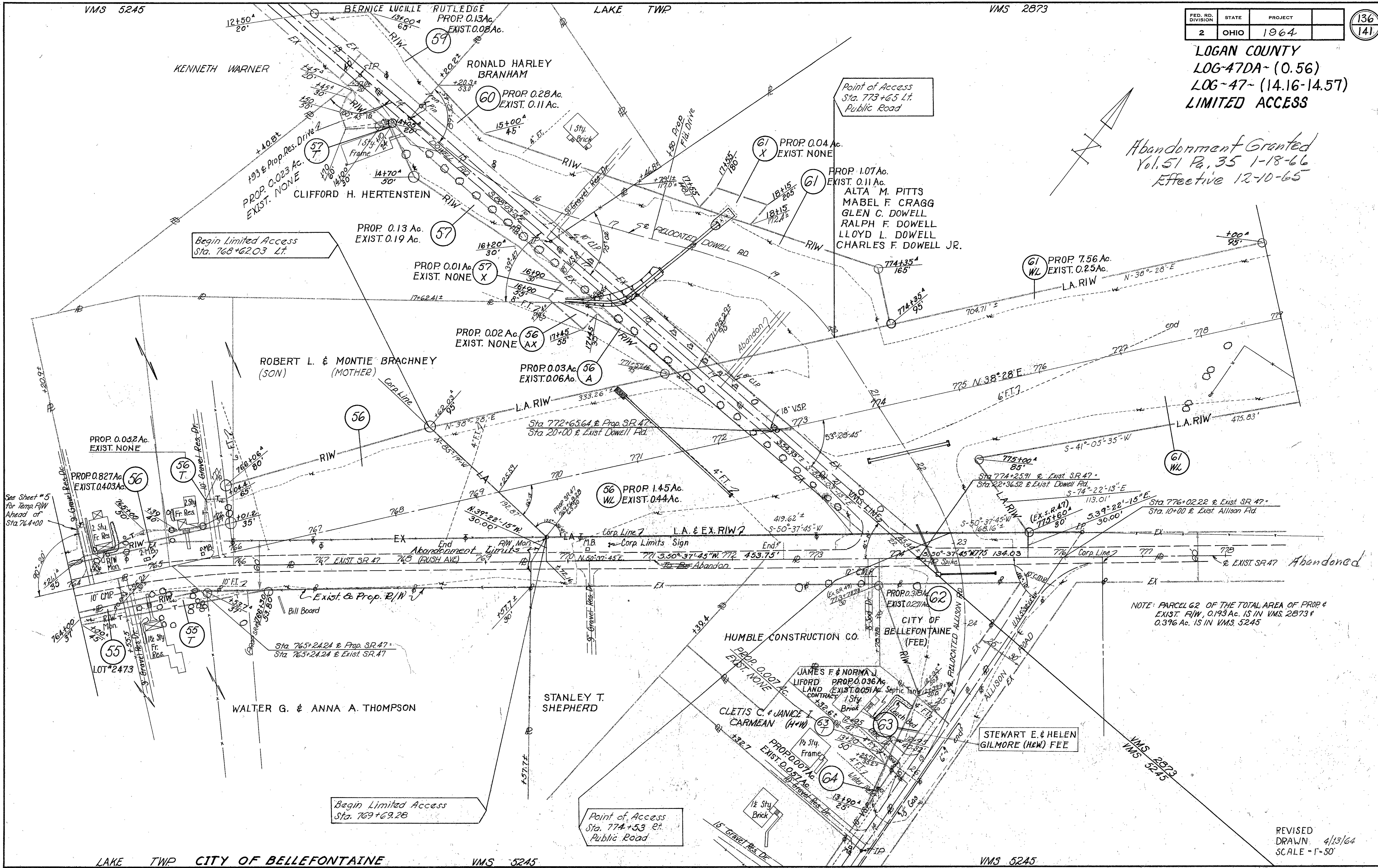
REV. between Par. 42 and 43 changed 4-20-65
DRAWN 4/13/64
SCALE - 1"=20'

R/W PLAN - STA. 754+00 TO STA. 764+00 - SHEET 5 OF 11

FED. RD. DIVISION	STATE	PROJECT	136 141
2	OHIO	1964	

LOGAN COUNTY
LOG-47DA~ (0.56)
LOG-47~ (14.16-14.57)
LIMITED ACCESS

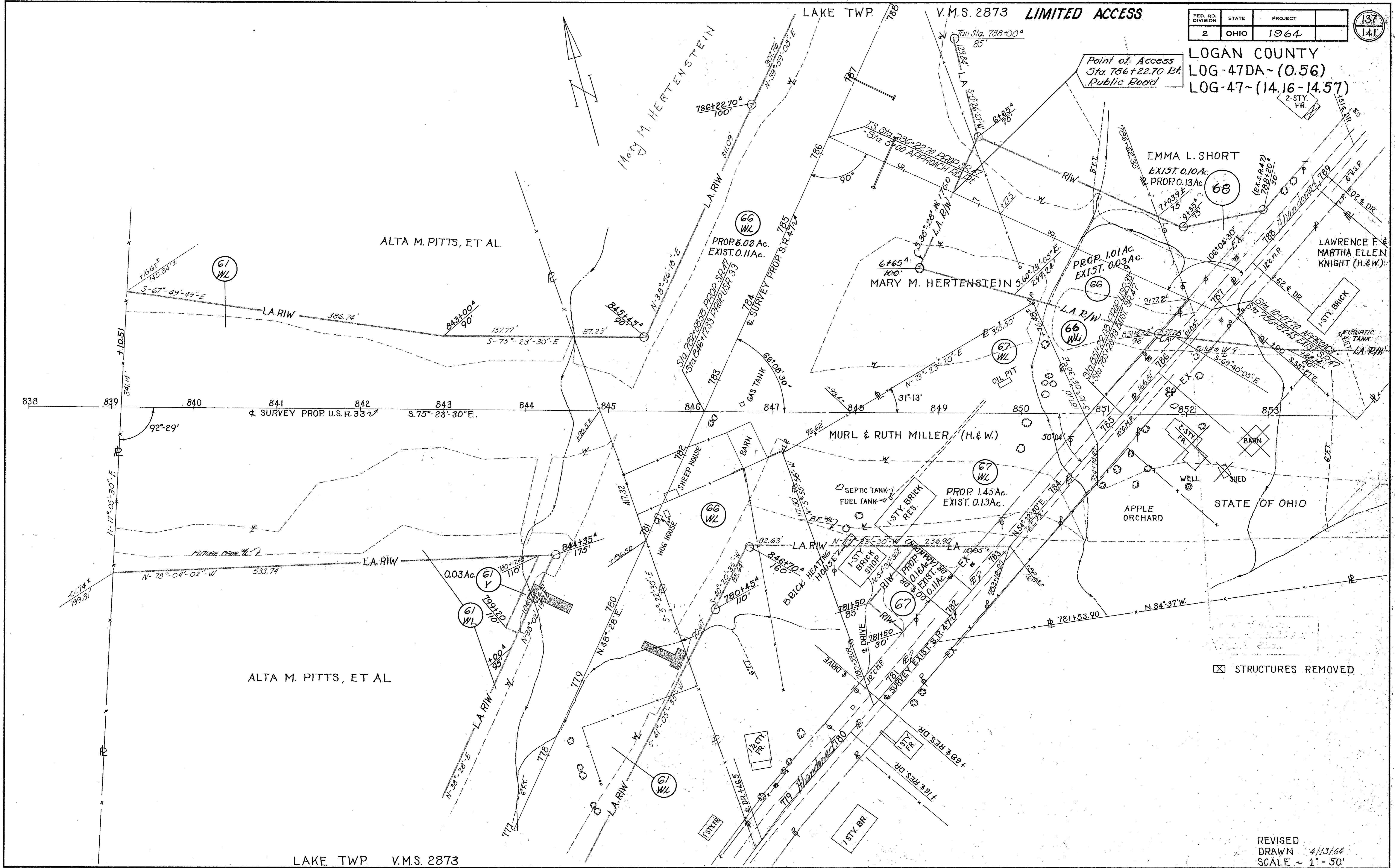
Abandonment Granted
Vol. 51 Pa. 35 1-18-66
Effective 12-10-65



FED. RD. DIVISION	STATE	PROJECT	137 141
2	OHIO	1964	

LOGAN COUNTY
LOG-47DA~(0.56)
LOG-47~(14.16-14.57)

Point of Access
Sta. 786+22.70 R/L
Public Road



☒ STRUCTURES REMOVED

LAKE TWP. V.M.S. 2873

REVISED
DRAWN 4/13/64
SCALE ~ 1" = 50'

RIW PLAN ~ STA. 777+00 TO STA. 787+00 & PROP. U.S.R. 33 ~ SHEET 7 OF 11

LAKE TWP. V.M.S. 3317

P.I. STA. 795+72.79
Δ = 45° 25' 08" RT.

FED. RD. DIVISION	STATE	PROJECT	138 141
2	OHIO	1964	

PAUL R. & LUCY F. ROBERTS (H.&W.)

RICHARD H. & IRIS M. CRANDALL (H.&W.)

LOGAN COUNTY
LOG-47DA ~ (0.56)
LOG-47 ~ (14.16-14.57)
LIMITED ACCESS

MARY M. HERTENSTEIN

PROP. 0.42 Ac.
EXIST. NONE

69 WL
PROP. 1.51 Ac.
EXIST. NONE

70 WL
PROP. 0.97 Ac.
EXIST. NONE

CYRIL &
EDITH STEVENS
(H.&W.)

71 WL
PROP. 0.71 Ac.
EXIST. 0.10 Ac.

CURVE DATA
P.I. STA. 795+72.79
Δ = 45° 25' 08" RT.
Dc = 3° 00' Xc = 299.81'
Ls = 300' Yc = 7.85'
Ts = 950.09' Ac = 36° 25' 08"
Es = 162.63' Lc = 1213.96'
Os = 4° 30' Rc = 1909.86'

EMMA L. SHORT

EARL JR. & MARY LOUISE
FOOT (H.&W.)

HARRY E. BOYER

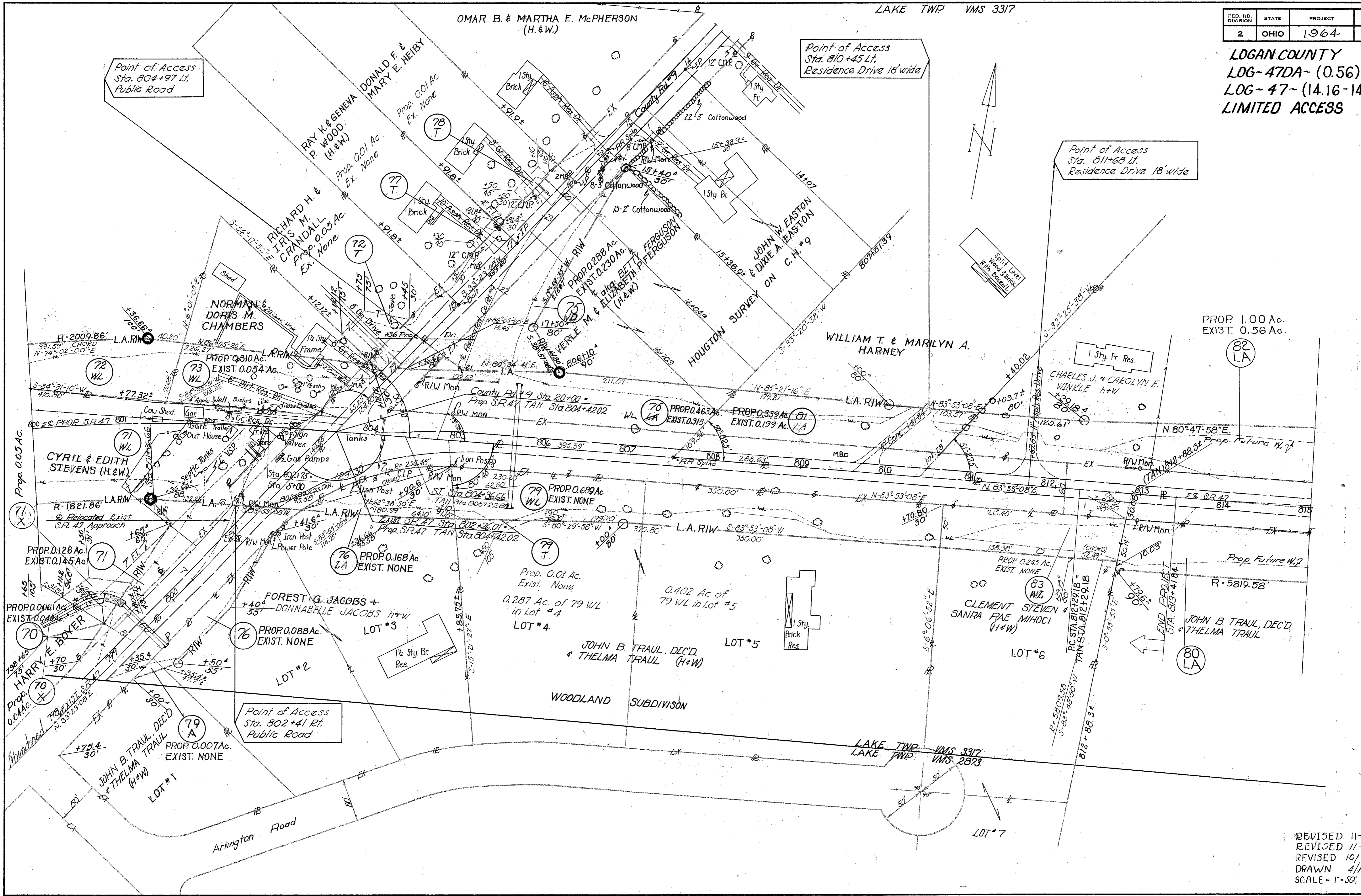
LAKE TWP. V.M.S. 2873

REVISED
DRAWN 4/13/64
SCALE ~ 1" = 50'

FED. RD. DIVISION	STATE	PROJECT	
2	OHIO	1964	

139
141

LOGAN COUNTY
 LOG-47DA- (0.56)
 LOG-47- (14.16-14.57)
 LIMITED ACCESS



REVISED 11-24-64
 REVISED 11-19-64
 REVISED 10/22/64
 DRAWN 4/13/64
 SCALE = 1"=50'

CHARLES J. & CAROLYN
E. WINKLE (H. & W.)

LAKE TWP. V.M.S. 3317

Point of Access
Sta. 820+50, Lt
Prop. Future 60' Street

PROP. 0.59 Ac.
EXIST. 0.32 Ac. Signed 9-26-67

PROP. 0.24 Ac.
EXIST. 0.33 Ac.

POINT OF ACCESS
STA. 826+58
RES. DR., 20' WIDE

HELEN GLADYS BEATY
signed 10-10-67

FED. RD. DIVISION	STATE	PROJECT
2	OHIO	1964

140
141

LOGAN COUNTY
LOG-47DA - (0.56)
LOG-47 - (14.16-14.57)
LIMITED ACCESS

MICHAEL & MARGARET A.
WAYNE (H & W)

RICHARD J. DEVINE

JOHN B. TRAU, DEC'D. & THELMA TRAU

LAKE TWP. V.M.S. 3317

CURVE DATA
PI. Sta. 821+92.91
 $\Delta = 19^{\circ}05'45" Lt$
D = 1"00'
R = 5729.58'
T = 963.73'
E = 80.49'
L = 1909.58'

80 LA
PROP. 2.81 Ac.
EXIST. 1.12 Ac.

LAKE TWP. V.M.S. 3442

MICHAEL & MARGARET A. WAYNE (H & W)

SEE RIW PLAN
LOG-47-15.26

RICHARD J. DEVINE

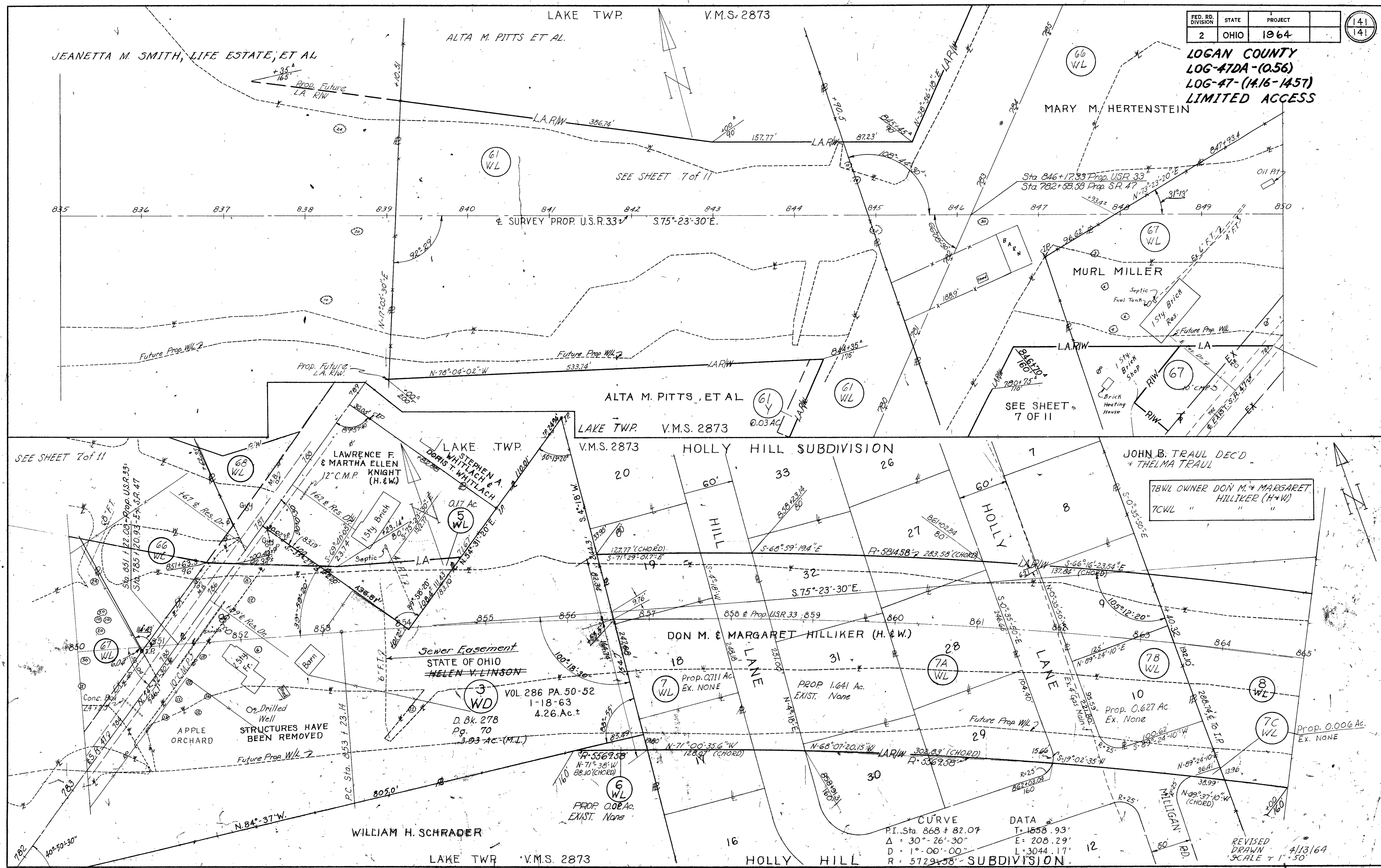
LAKE TWP. V.M.S. 3442

12-10-64
REVISED 11/19/64
DRAWN 4/13/64
SCALE ~ 1"=50'

R/W PLAN ~ STA. 815+00 TO STA. 840+00 ~ SHEET 10 OF 11

FED. RD. DIVISION	STATE	PROJECT	(141)
2	OHIO	1064	(141)

LOGAN COUNTY
LOG-47DA-(0.56)
LOG-47-(14.16-1457)
LIMITED ACCESS



CURVE DATA

PI. Sta. 868 + 82.07	T = 1558.93'
Δ = 30° - 26' - 30"	E = 208.29'
D = 1° - 00' - 00"	L = 3044.17'
R = 5729.58'	

REVISED
 DRAWN 4/13/64
 SCALE 1" = 50'