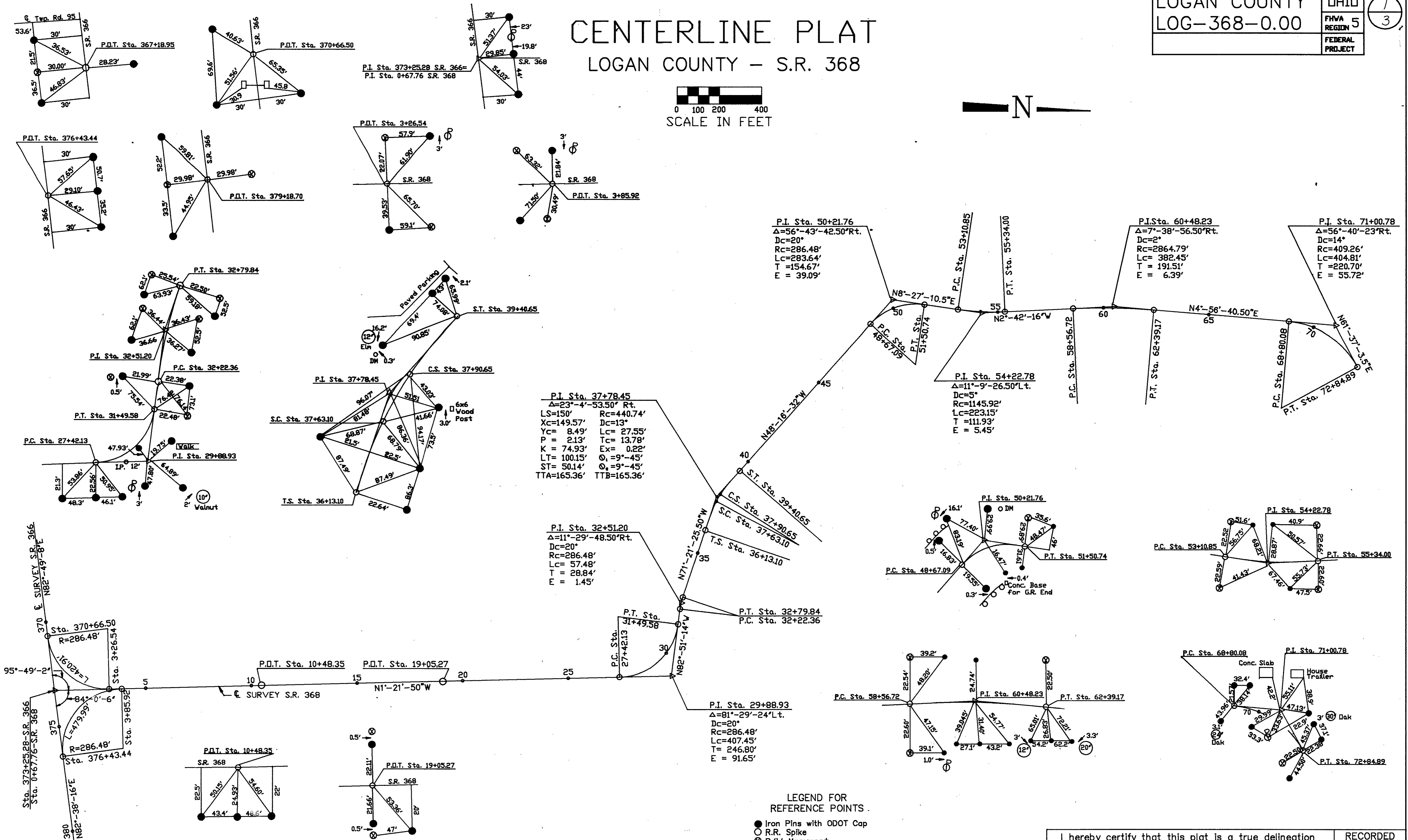
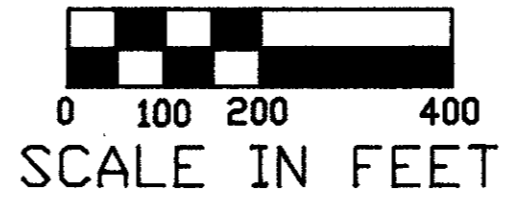


CENTERLINE PLAT

LOGAN COUNTY - S.R. 368



LEGEND FOR REFERENCE POINTS

- Iron Pins with ODOT Cap
 - R.R. Spike
 - ⊗ R/W Monument
- NOTE: Reference Details are not drawn to scale.

I hereby certify that this plat is a true delineation of a survey made by the Ohio Department of Transportation in 1985.

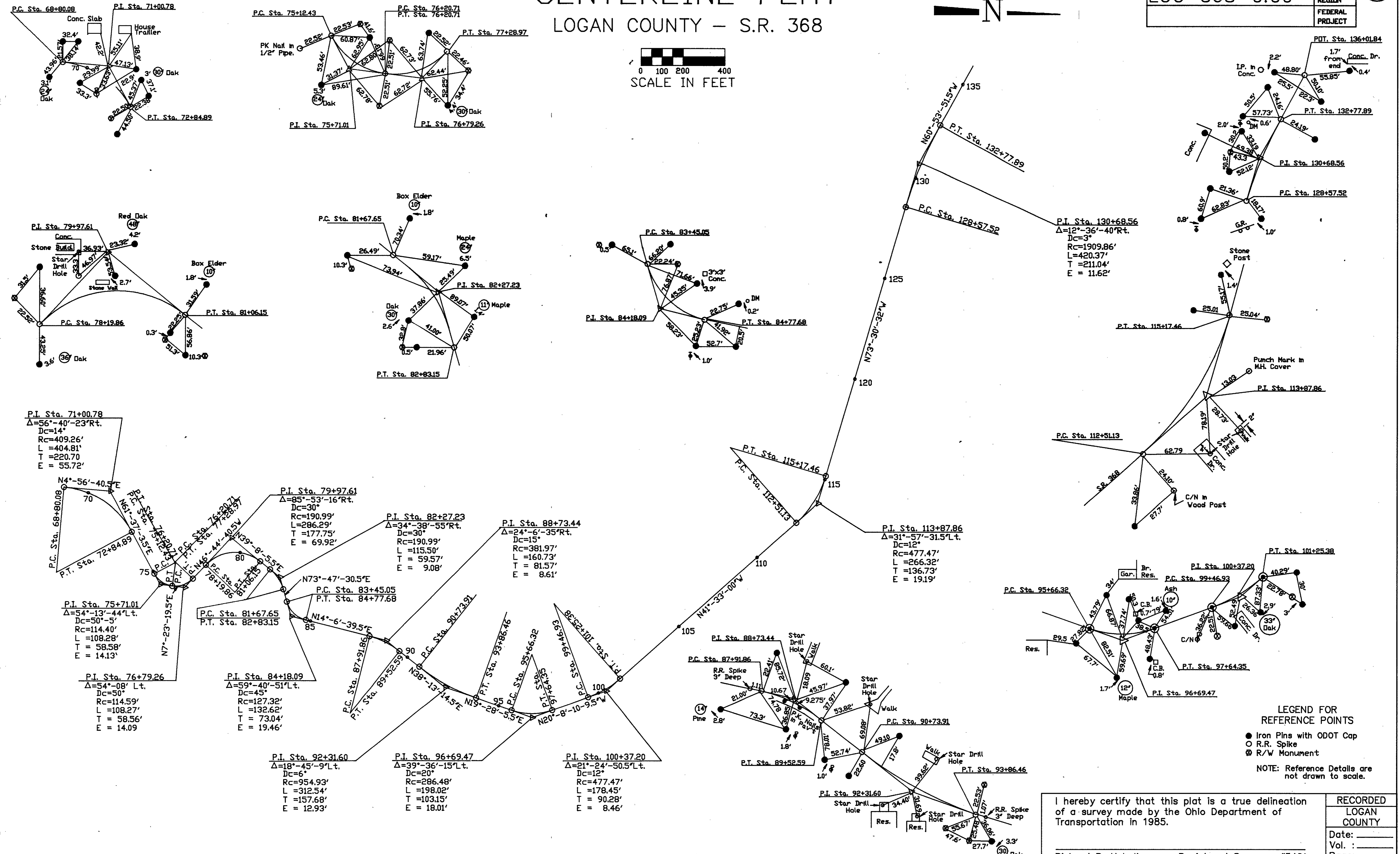
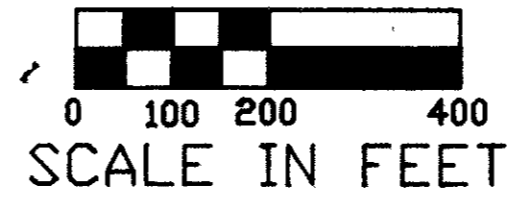
Richard R. Helminger - Registered Surveyor #5421

RECORDED
LOGAN COUNTY
Date: _____
Vol. : _____
Page: _____

CENTERLINE PLAT

LOGAN COUNTY - S.R. 368

LOGAN COUNTY	OHIO
LOG-368-0.00	REGION 5
FEDERAL PROJECT	2 3



LEGEND FOR REFERENCE POINTS

- Iron Pins with ODOT Cap
- R.R. Spike
- ⊗ R/W Monument

NOTE: Reference Details are not drawn to scale.

I hereby certify that this plat is a true delineation of a survey made by the Ohio Department of Transportation in 1985.

Richard R. Heimlinger - Registered Surveyor #5421

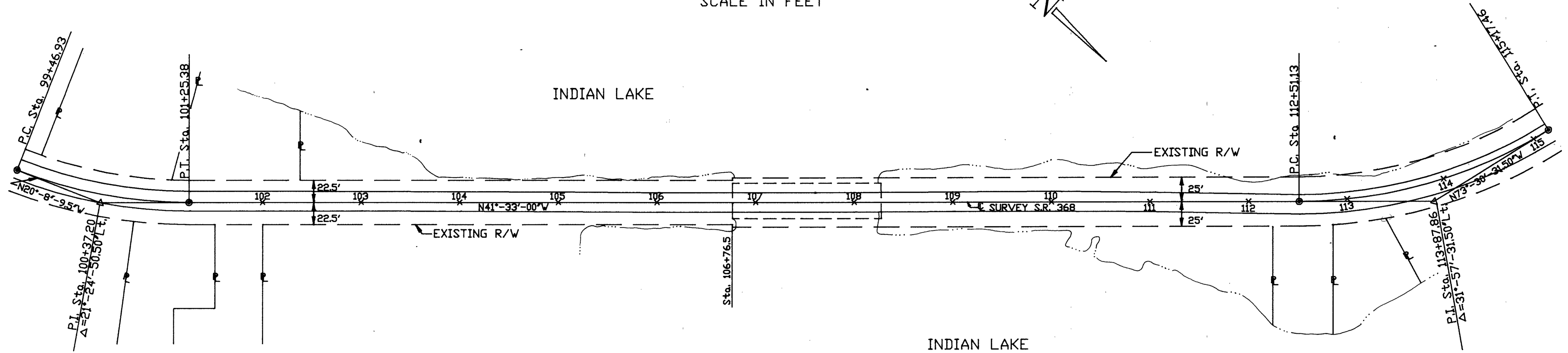
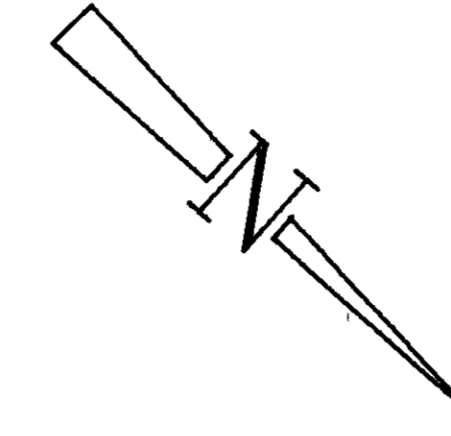
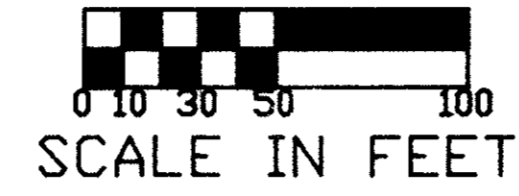
RECORDED
LOGAN COUNTY
Date: _____
Vol. : _____
Page: _____

CENTERLINE PLAT

LOGAN COUNTY
STOKES TOWNSHIP

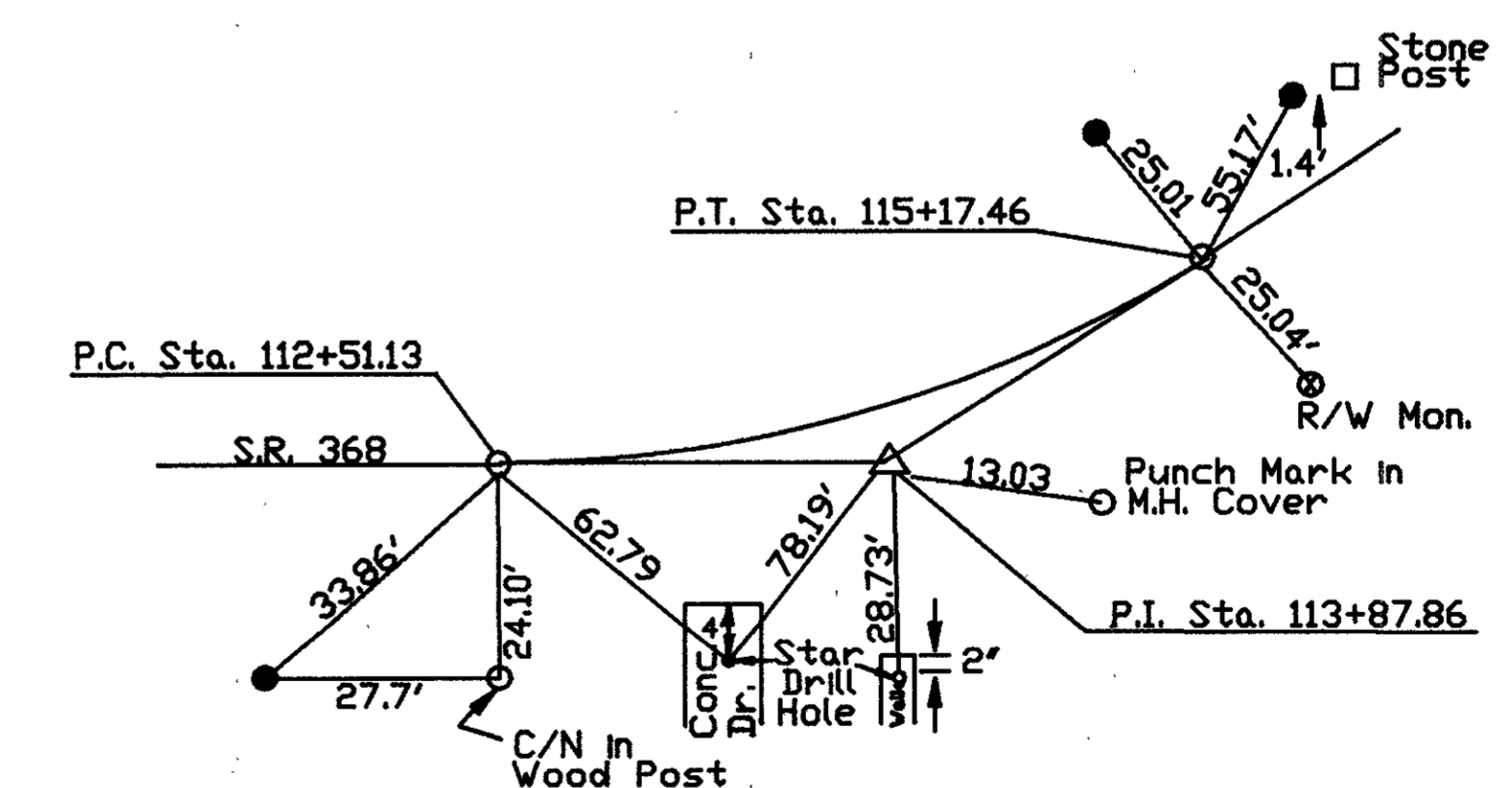
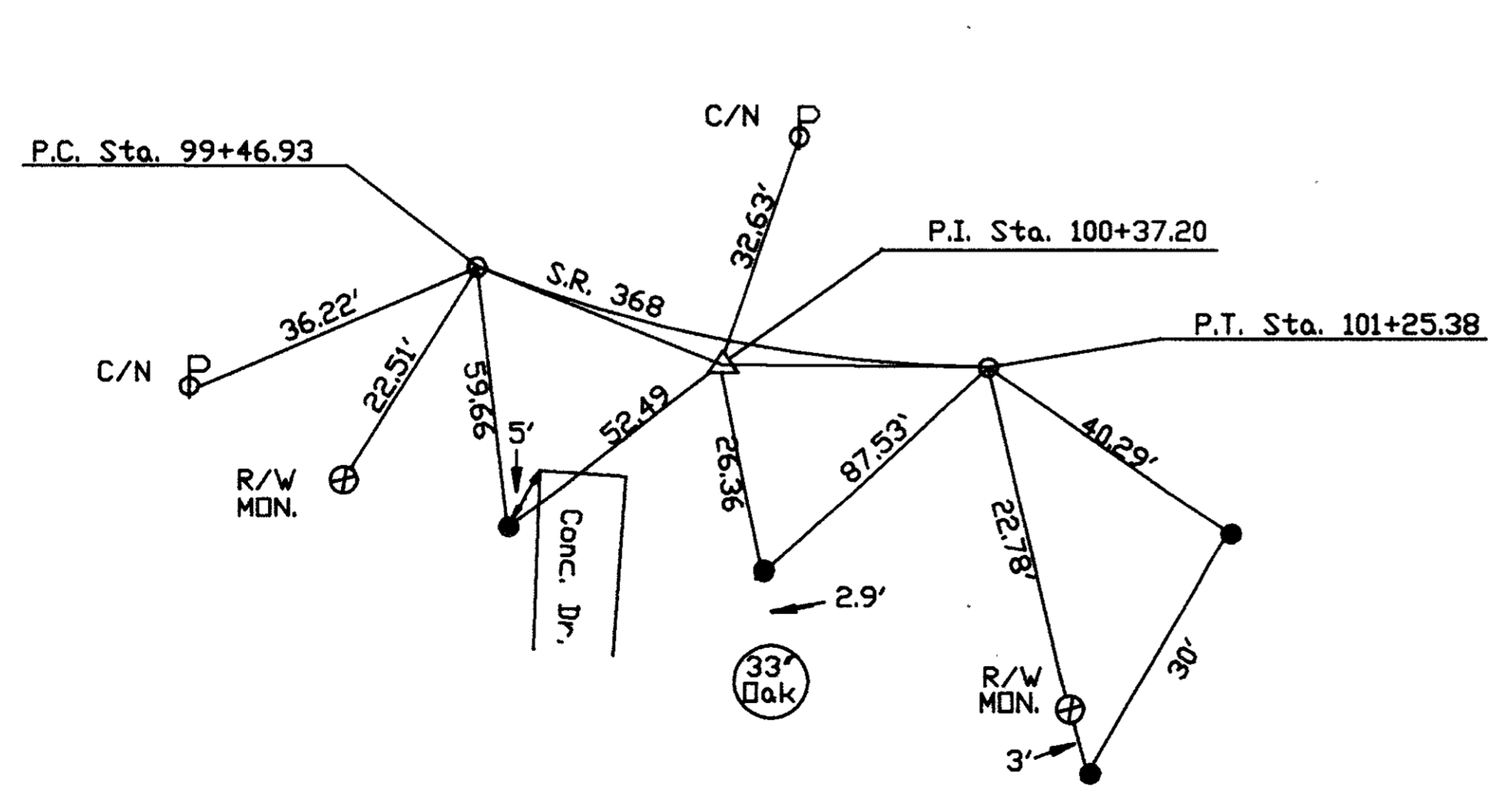
LOGAN COUNTY
LOG-368-

OHIO	3
FHWA REGION	5
FEDERAL PROJECT	



CURVE DATA
 P.I. Sta. 100+37.20
 $\Delta = 21^\circ - 24' - 50.50''$ Lt.
 $D_c = 12^\circ$
 $R_c = 477.47'$
 $L_c = 178.45'$
 $T = 90.28'$
 $E = 8.46'$

CURVE DATA
 P.I. Sta. 113+87.86
 $\Delta = 31^\circ - 57' - 31.50''$ Lt.
 $D_c = 12^\circ$
 $R_c = 477.47'$
 $L_c = 266.32'$
 $T = 136.73'$
 $E = 19.19'$



LEGEND FOR
REFERENCE POINTS

- Iron Pins with ODOT Cap
- R.R. Spike

NOTE: Reference Details are not drawn to scale.