

SP 365 (P)

### SURVEYOR'S CERTIFICATE

The accompanying plat represents a subdivision of land in the Township of Stokes, County of Logan, State of Ohio and is part of the NW 1/4 of Section 23, T-6 S., R-8 E. The tract has an area of 0.64 acre in streets and 0.67 acre in lots, making a total of 1.31 acres. The dimensions are indicated in feet and decimals of a foot. \* indicates irons found. @ indicates irons set. I hereby certify that the accompanying plat is a correct representation of BYERS ALLOTMENT

Dan E. Dodson  
 Dan E. Dodson  
 Surveyor-in-Training  
E. K. Core  
 Approved by  
 E. K. Core  
 Registered Surveyor  
 No. 321

### DEDICATION

Know all men by these presents that Rhoda M. Byers proprietor of the land indicated on the accompanying plat has authorized the platting of the same and does hereby dedicate the streets to the public use forever.

Julius W. Long  
 Witness  
Harry E. Dupont  
 Witness  
Rhoda M. Byers

STATE OF OHIO  
 COUNTY OF LOGAN SS

Be it remembered that on this 4th day of July in the year of our Lord One Thousand Nine Hundred and Fifty Four before me, a Notary Public in and for said County, came Rhoda M. Byers grantor in the foregoing dedication and acknowledged the signing thereof to be her free and voluntary act.

Julius W. Long  
 Notary Public  
 My Commission expires  
 8/1/55

### COUNTY ENGINEER'S OFFICE

Approved this 12th day of JULY 1954

E. K. Core  
 County Engineer

### ACCEPTANCE

The accompanying plat was approved and accepted by the Board of County Commissioners at a regular meeting July 12th 1954

Clay M. Hostetler  
H. H. Lane  
Hugh Woodcock  
 Commissioners of Logan Co.

### AUDITOR'S OFFICE

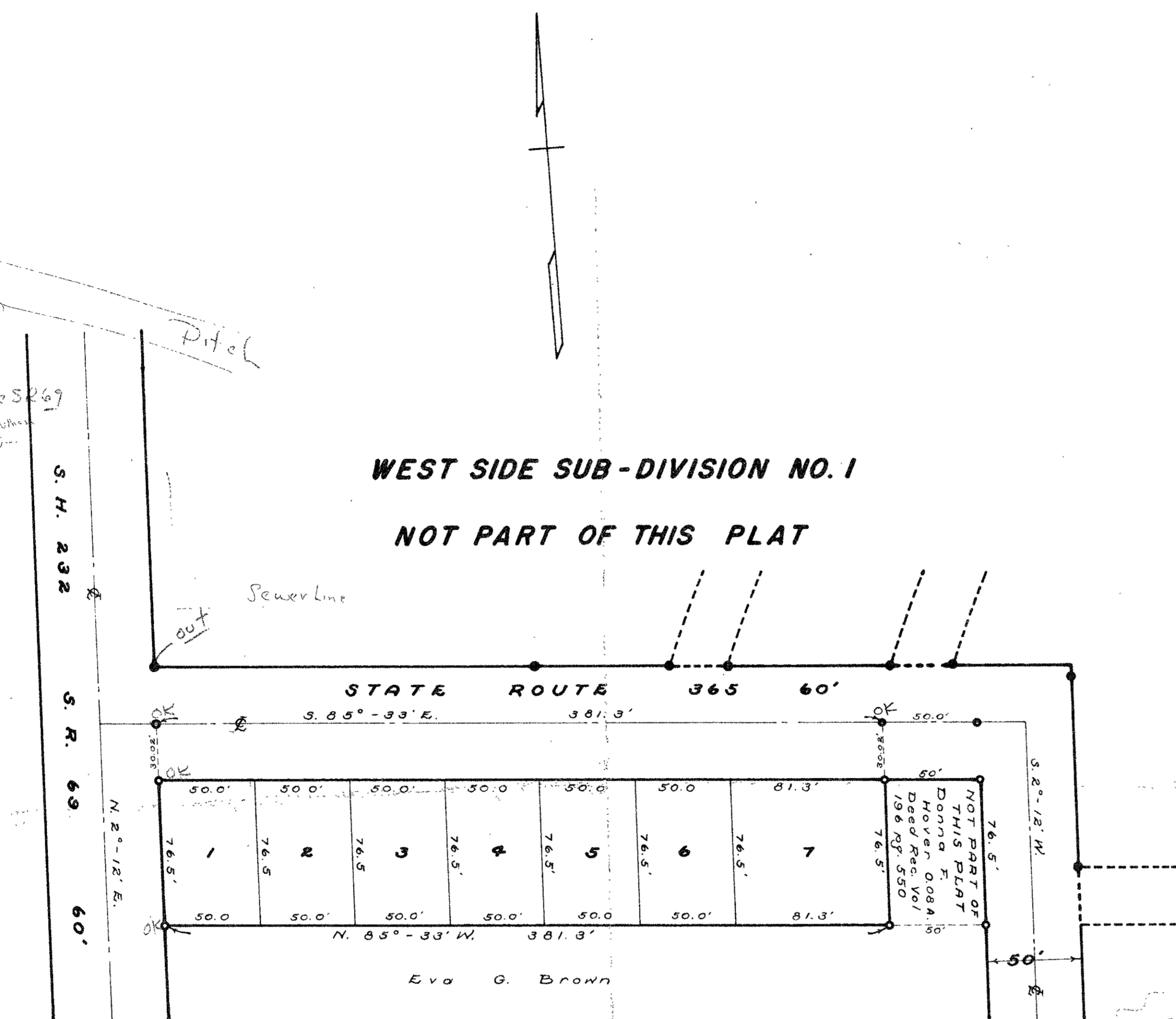
The within lots transferred this 17th day of July 1954

Francis J. Ingraham  
 Auditor of Logan County

### RECORDER'S OFFICE

Received for record at 10:00 o'clock A. M. on this 12th day of July 1954  
 Recorded in Plat Book C, Volume 3, page 91

Rouma L. Strayer  
 Recorder of Logan County



**BYERS ALLOTMENT**  
 STOKES TOWNSHIP LOGAN COUNTY, OHIO

SECTION 23 T-6S. R-8E.

SCALE 1" = 50'

1954

*Points marked OK were found 2-22-54*