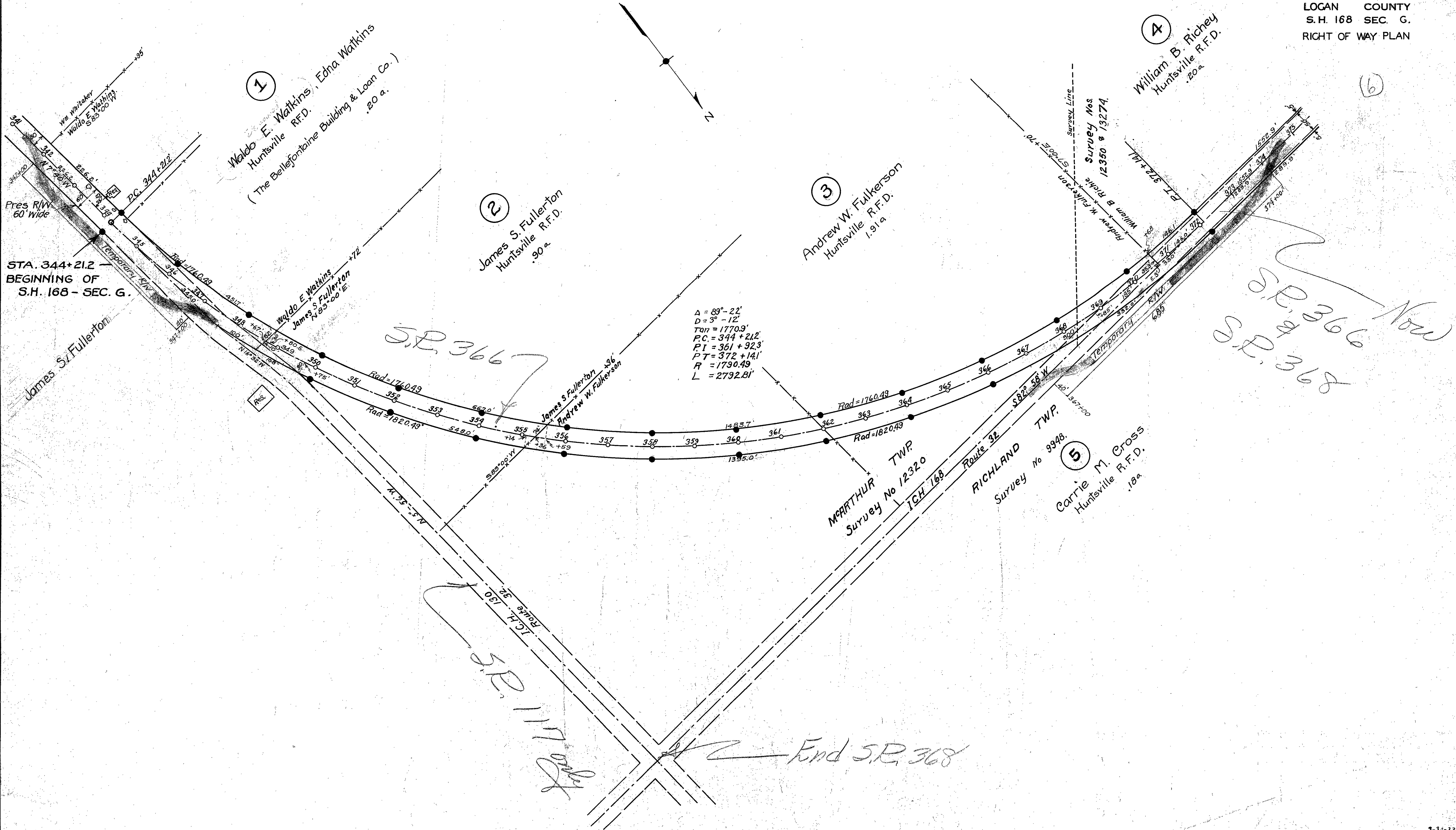


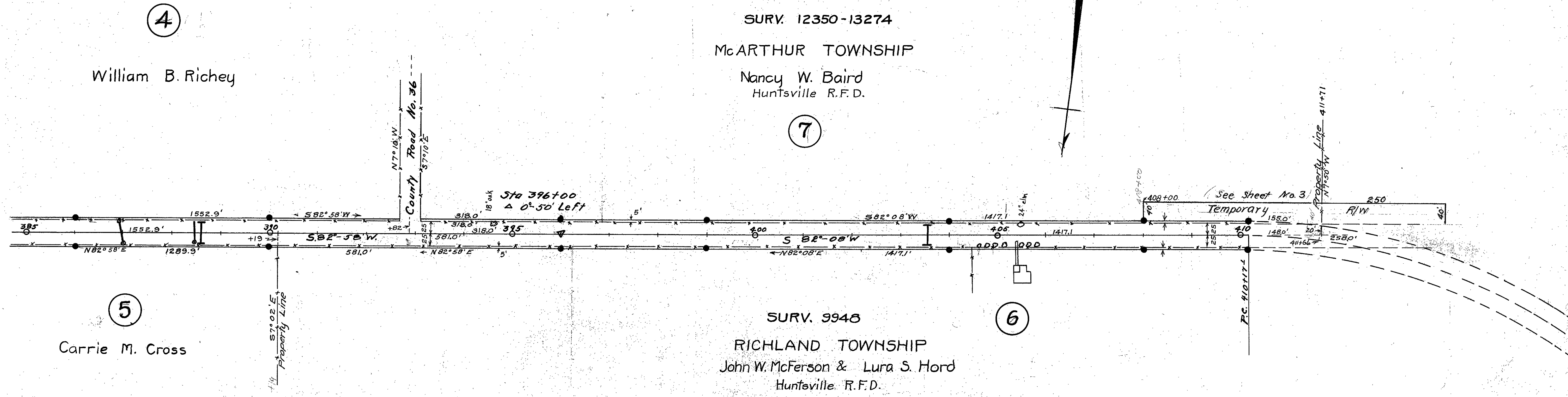
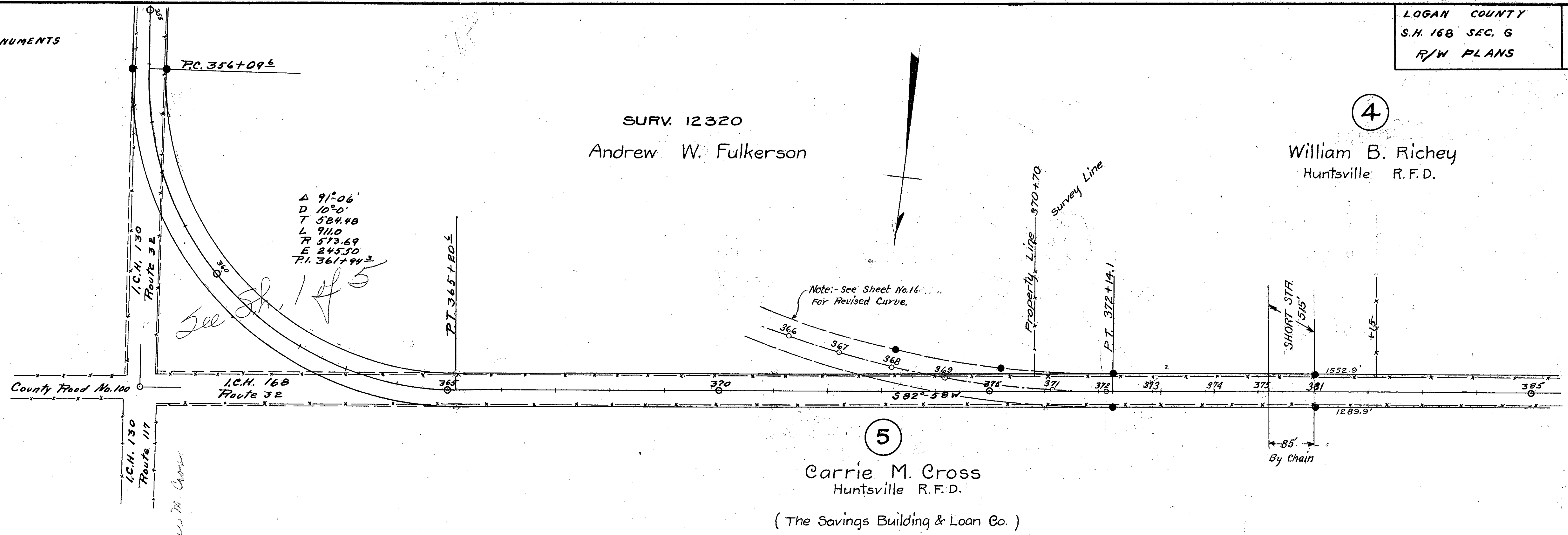
FED. RD. DIST. NO.	STATE	FED. AID PROJECT	FISCAL YEAR
10	OHIO		1932

15

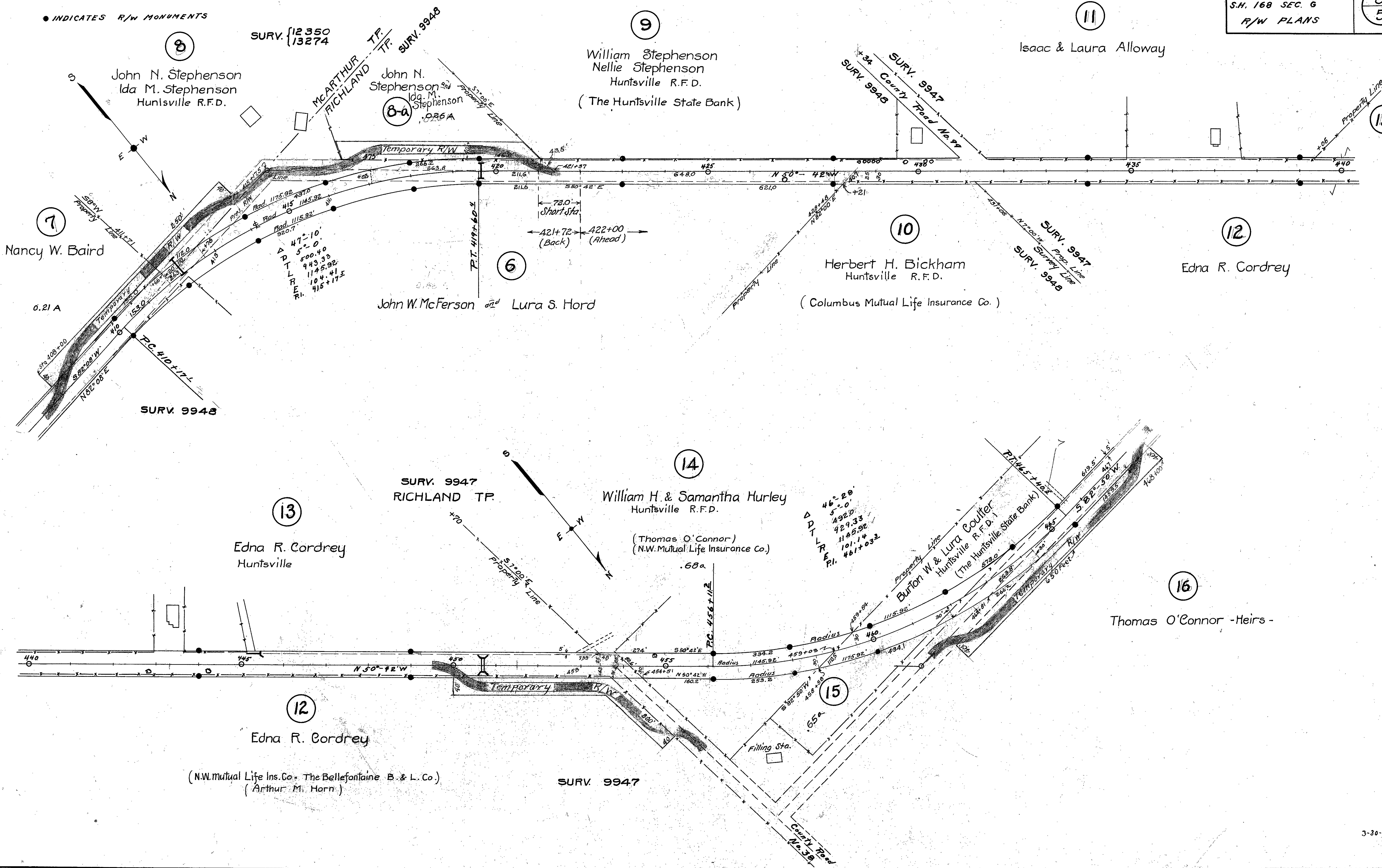
LOGAN COUNTY  
S.H. 168 SEC. G.  
RIGHT OF WAY PLAN



● INDICATES R/W MONUMENTS







● INDICATES R/W MONUMENTS

SURV. 12350  
13274

MCARTHUR TP.  
RICHLAND TP.  
SURV. 9948

William Stephenson  
Nellie Stephenson  
Huntsville R.F.D.  
(The Huntsville State Bank)

Isaac & Laura Alloway

Nancy W. Baird

John W. McFerson and Lura S. Hord

Herbert H. Bickham  
Huntsville R.F.D.  
(Columbus Mutual Life Insurance Co.)

Edna R. Cordrey

SURV. 9947  
RICHLAND TP.

William H. & Samantha Hurley  
Huntsville R.F.D.  
(Thomas O'Connor)  
(N.W. Mutual Life Insurance Co.)

Edna R. Cordrey  
Huntsville

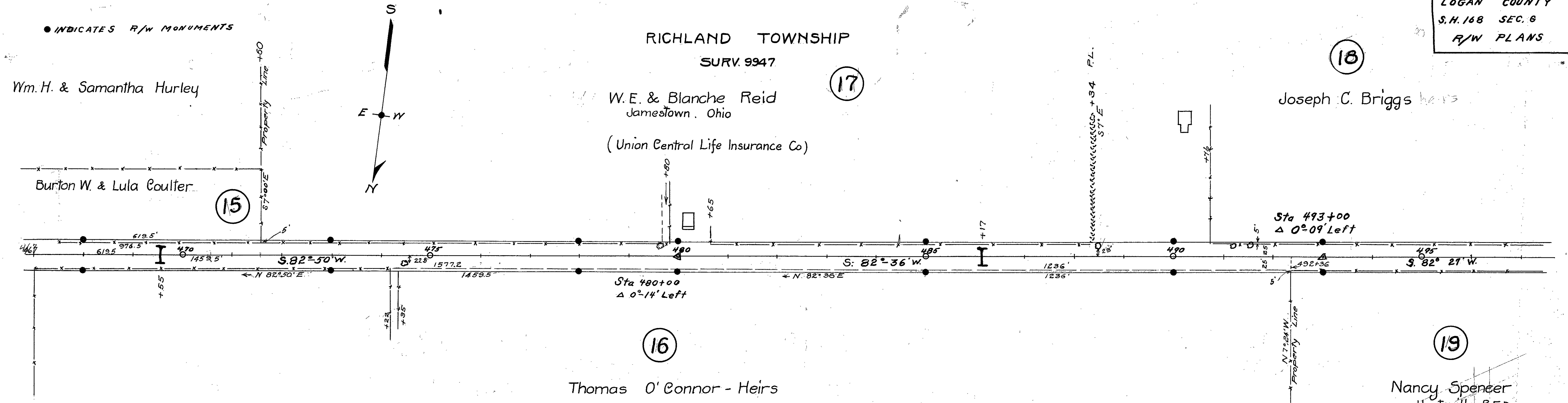
Burton W. & Lura Coulter  
Huntsville R.F.D.  
(The Huntsville State Bank)

Thomas O'Connor - Heirs -

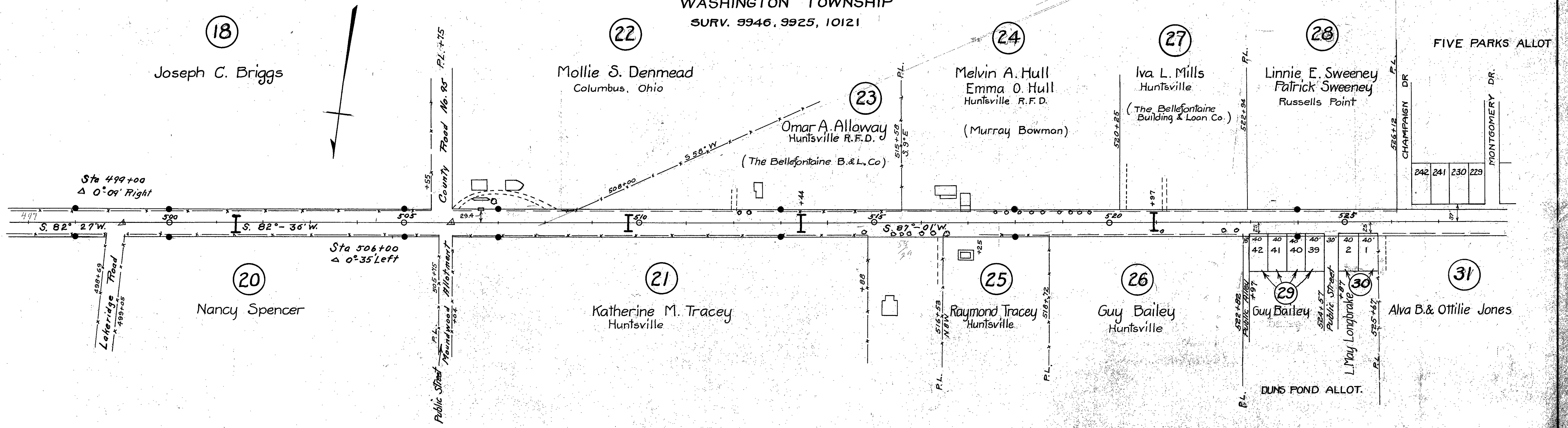
(N.W. Mutual Life Ins. Co. - The Bellefontaine B. & L. Co.)  
(Arthur M. Horn)

SURV. 9947

RICHLAND TOWNSHIP  
SURV. 9947



WASHINGTON TOWNSHIP  
SURV. 9946, 9925, 10121





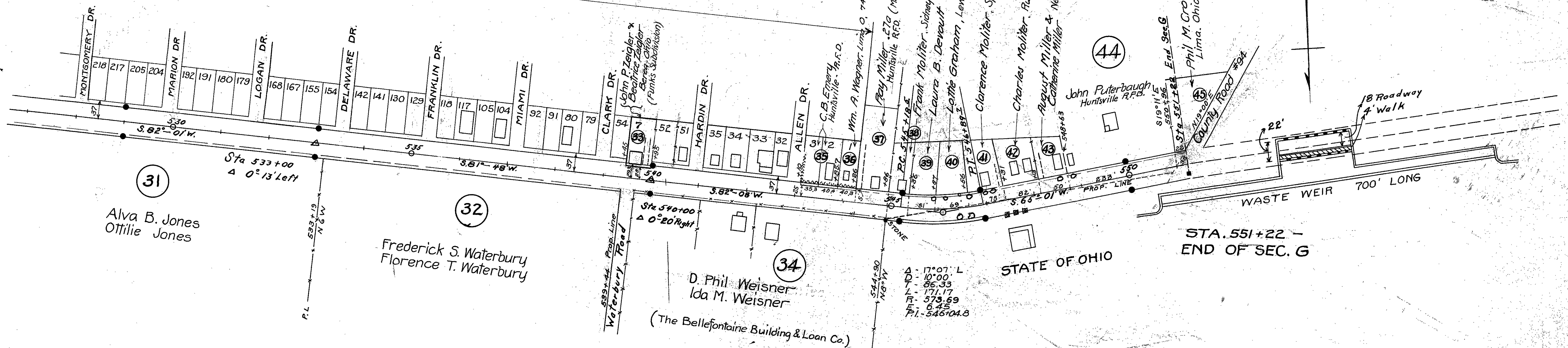
WASHINGTON TOWNSHIP  
SURV. 9946, 9925, 10121

LOGAN COUNTY  
S.H. 168 SEC. 6  
R/W PLANS

5  
5

● INDICATES R/W MONUMENTS

FIVE PARKS ALLOTMENT



545  
75  
470