

FED. RD. DIST. NO.	STATE	PROJECT	FISCAL YEAR
	OHIO		

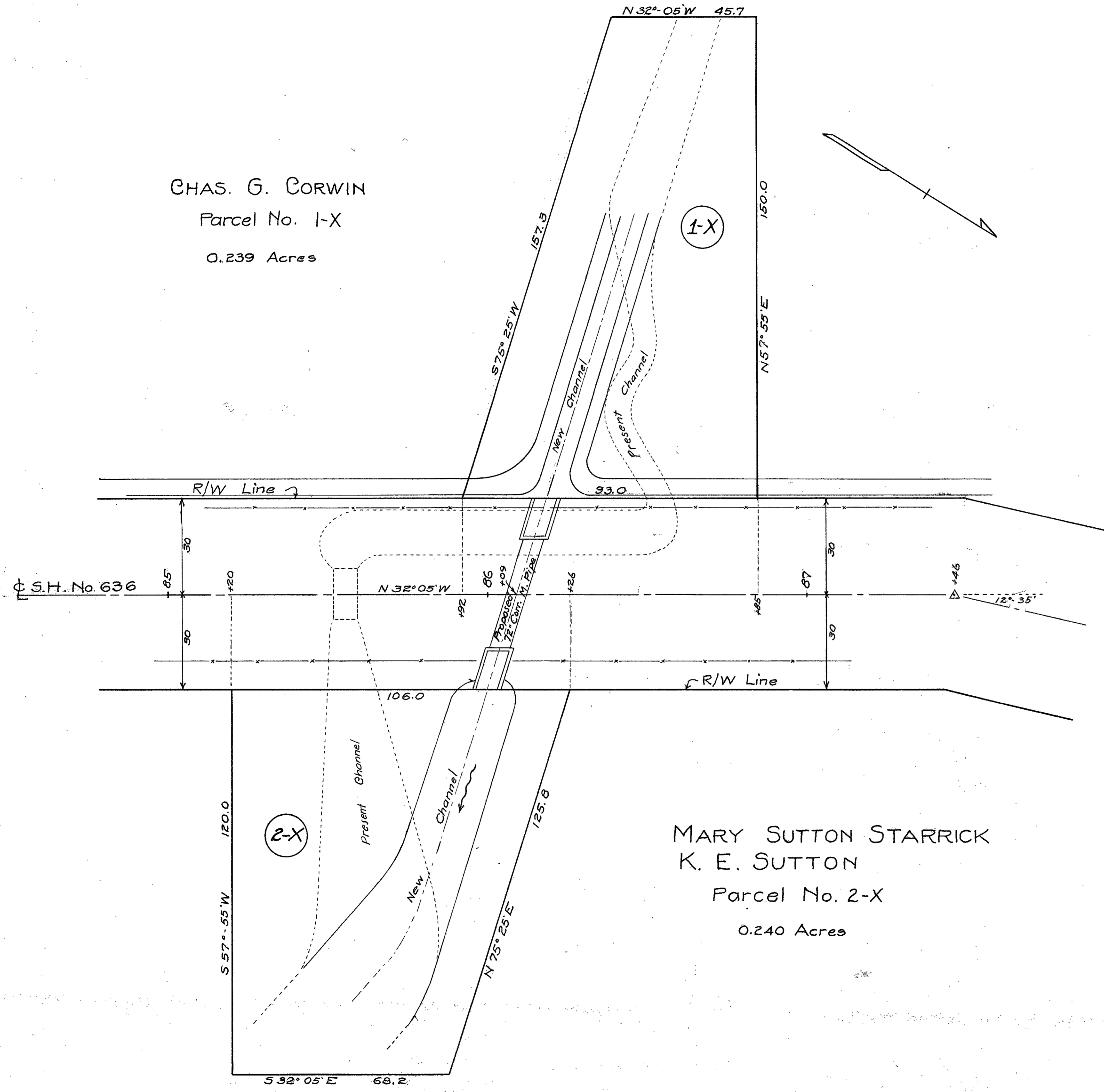
LOGAN COUNTY
 PERRY TOWNSHIP
 R/W PLANS
 AT CULVERT No. Lo-292-17
 S.H. No. 636

31

VA. MIL. SURV. No. 7288

CHAS. G. CORWIN
 Parcel No. 1-X
 0.239 Acres

1-X



MARY SUTTON STARRICK
 K. E. SUTTON
 Parcel No. 2-X
 0.240 Acres