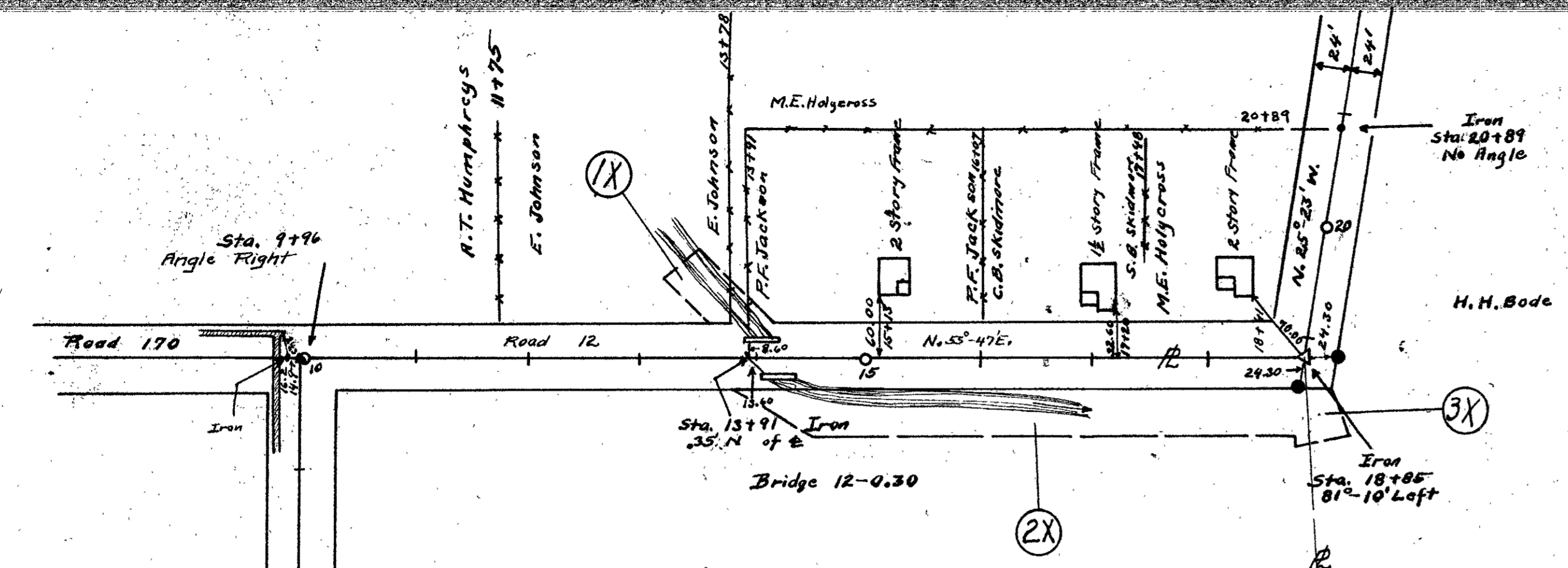


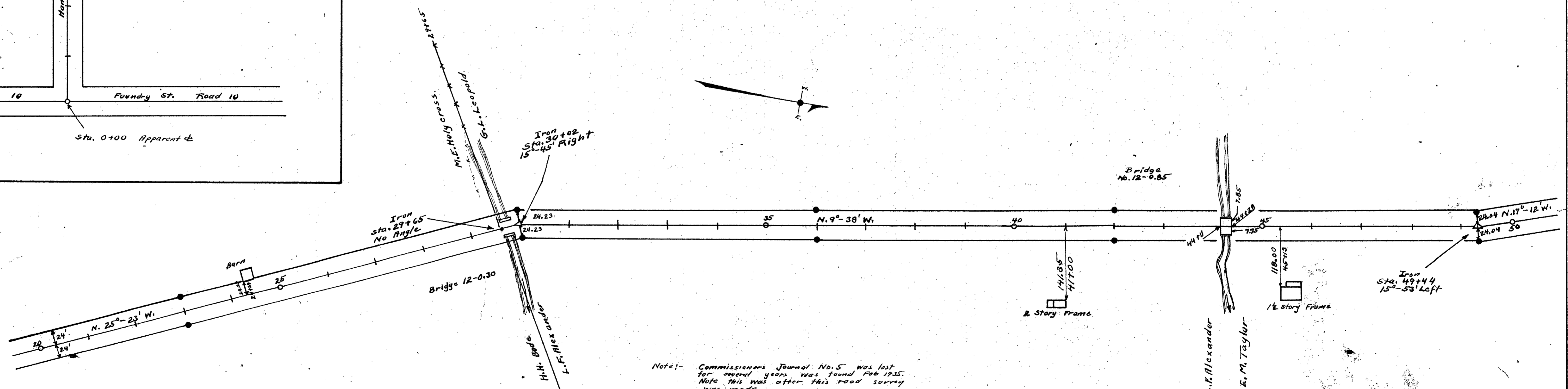
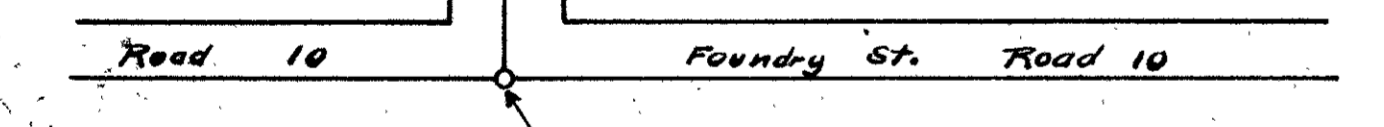
S.P. 292



PAR. 1X~2X~3X~CHANNEL EASEMENT
 LOG ~ 292 ~ (1.62~1.71)
 M. & R. ~ 1961
 PF 270

LIBERTY

EAST



48' East Liberty 9th Walnut Grove Pike Book H Page 66 (1887)
 60' Commissioners Journal Vol. 5 Page 98 (1836)
 Survey Notes Logan County Surveys Book 574 Page 10 To 23
 R/W Posts set as shown

Note: - Commissioners Journal No. 5 was lost for several years was found Feb 1935. Note this was after this road survey was made.

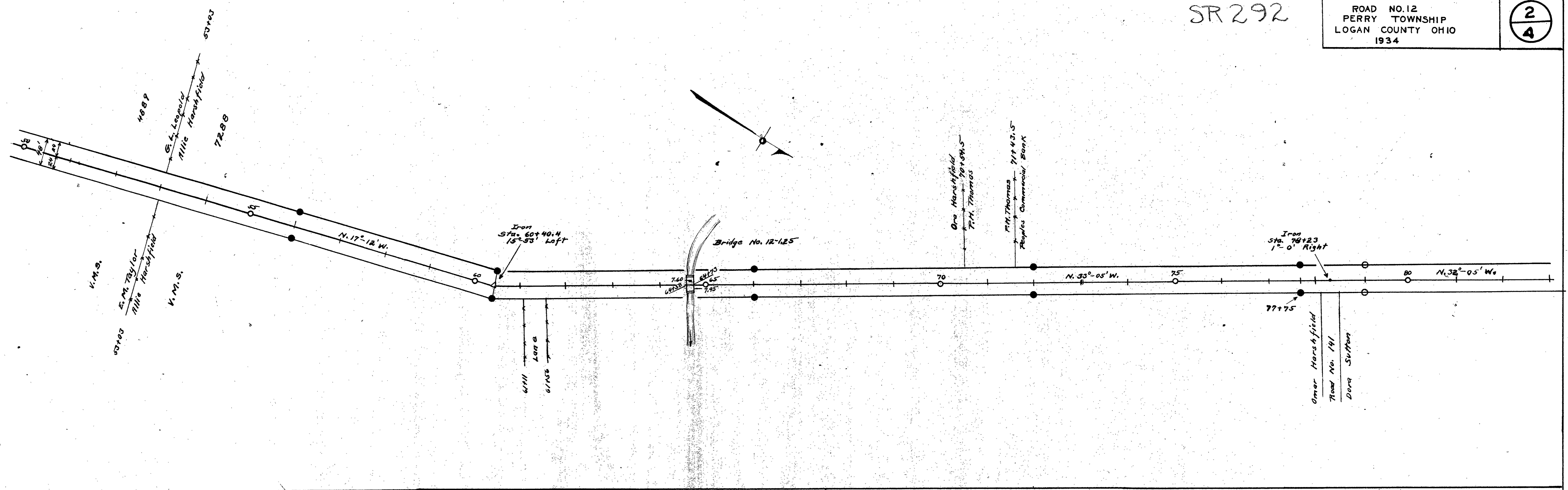
ROAD 12

X-12

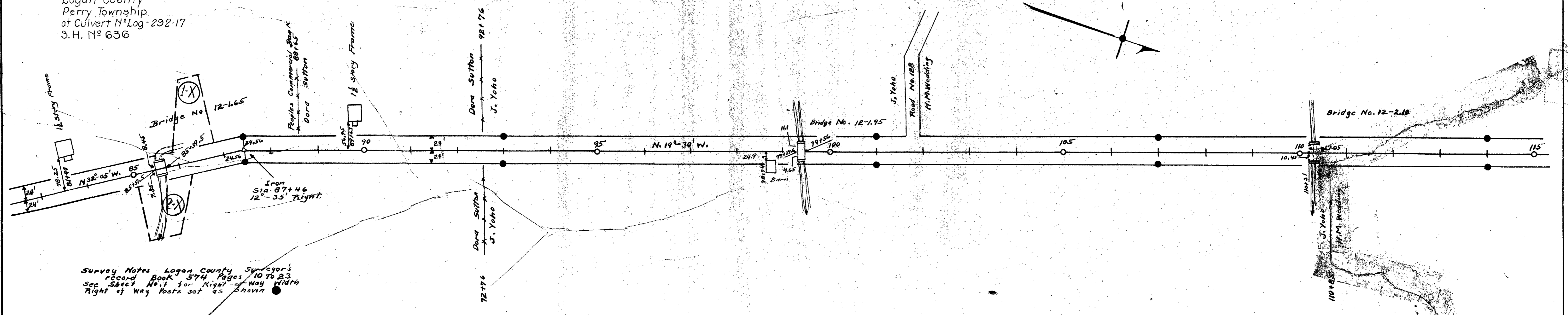
SR 292

ROAD NO. 12
PERRY TOWNSHIP
LOGAN COUNTY OHIO
1934

2
4



Par. N^o 1-X - 2-X for Channel Easement
 See R/W Plan
 Logan County
 Perry Township
 at Culvert N^o Log-292-17
 S.H. N^o 636



Survey Notes Logan County Surveyor's
 Record Book 574, Pages 10 to 23
 See Sheet No. 1 for Right of Way Width
 Right of Way Posts set as Shown

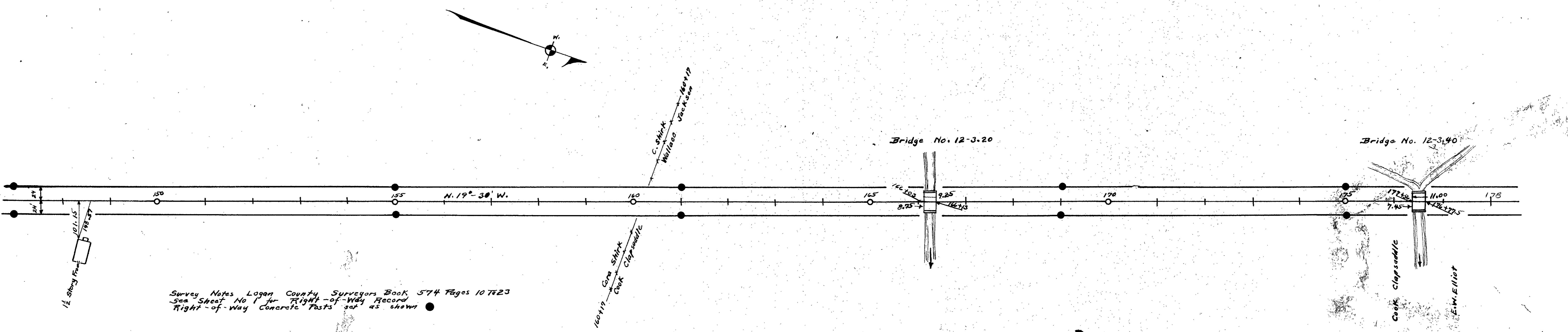
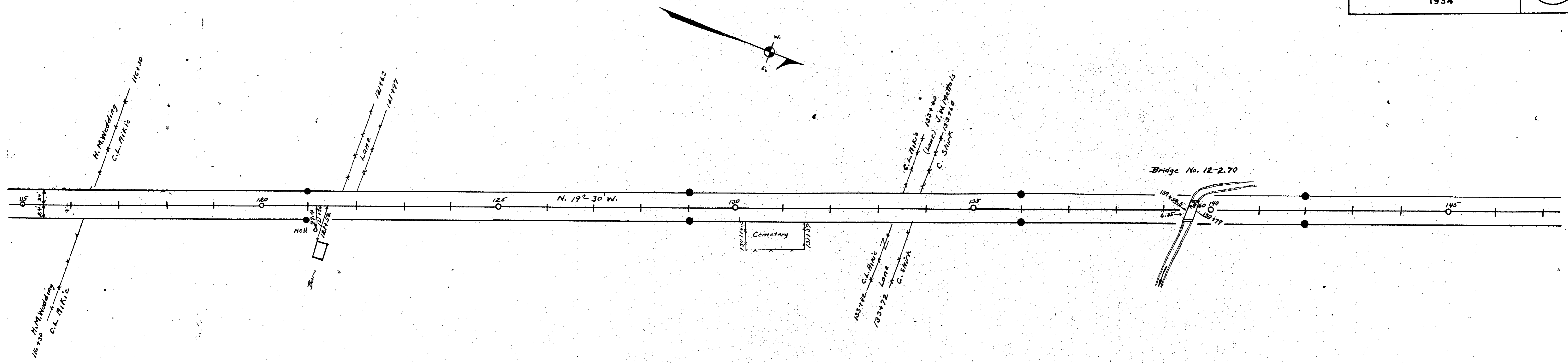
Surveyed Jan 1934 By F.F. Wright
 Drawn March 1936 By F.F. Wright

1532
 INDEXED ON MAP

SR292

ROAD NO. 12
PERRY TOWNSHIP
LOGAN COUNTY OHIO
1934

3
4



Survey Notes Logan County Surveyors Book 574 Pages 10723
See Sheet No. 1 for Right-of-Way Record
Right-of-Way Concrete Posts set as shown

Surveyed 1934 by F.F. Wright
Drawn 1934 by F.F. Wright

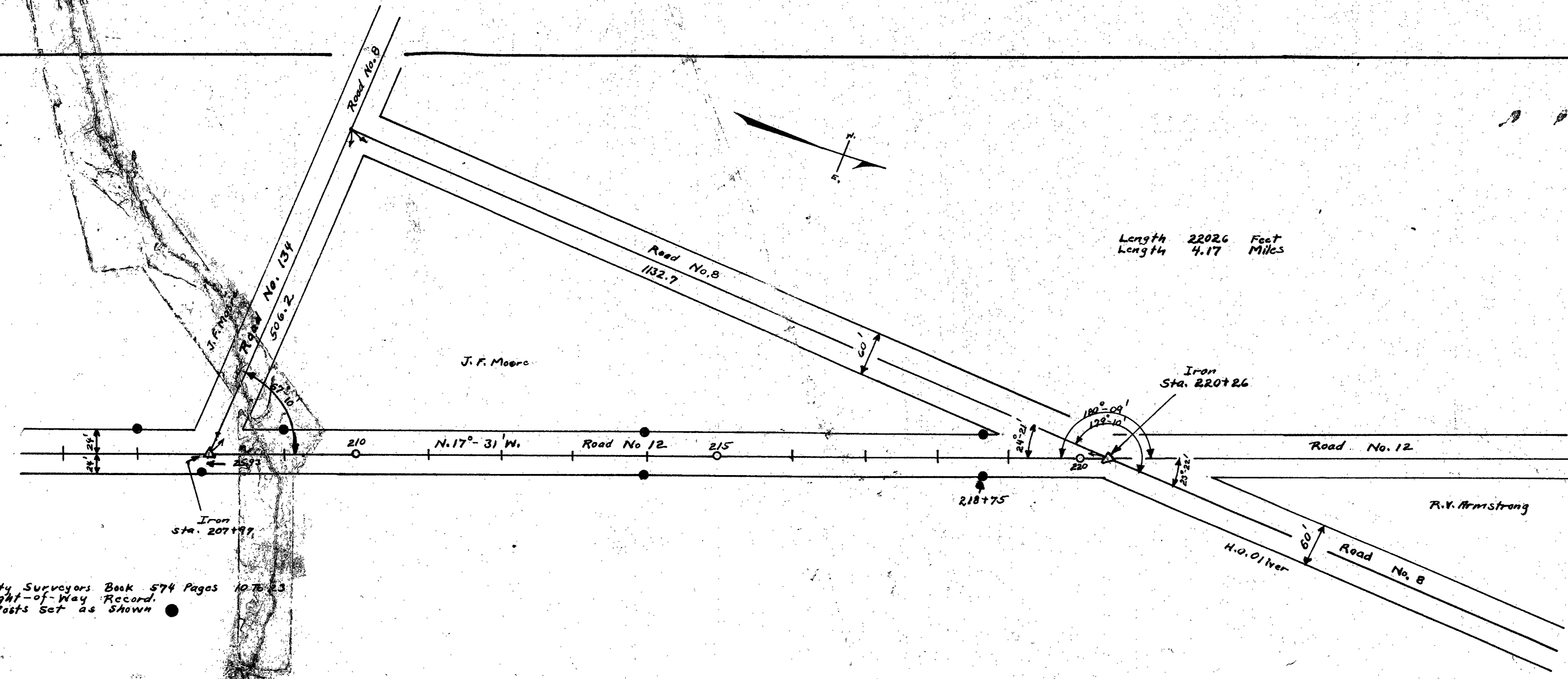
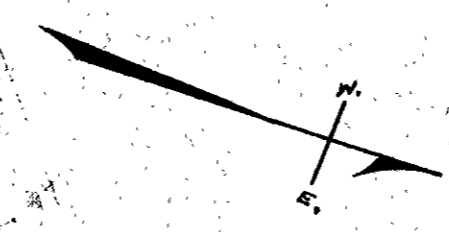
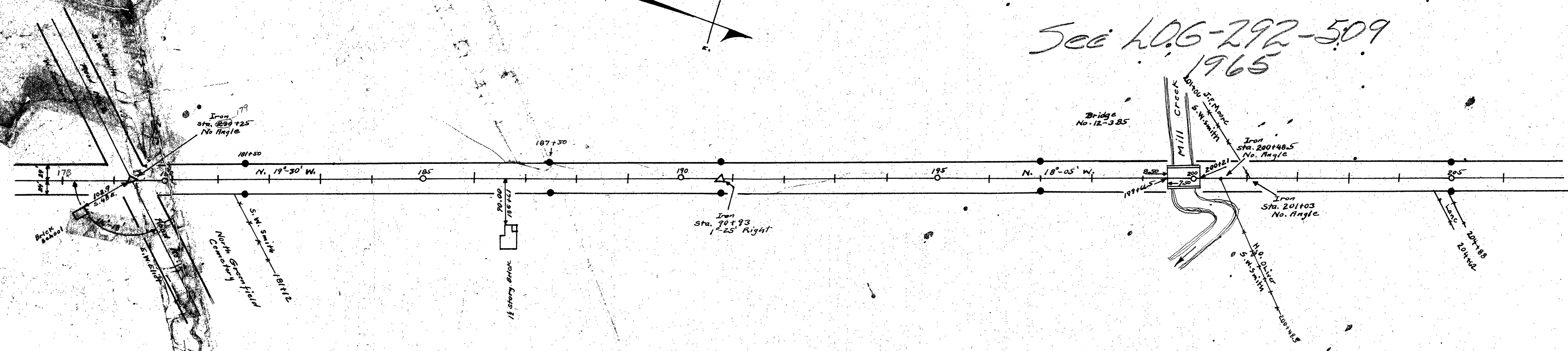
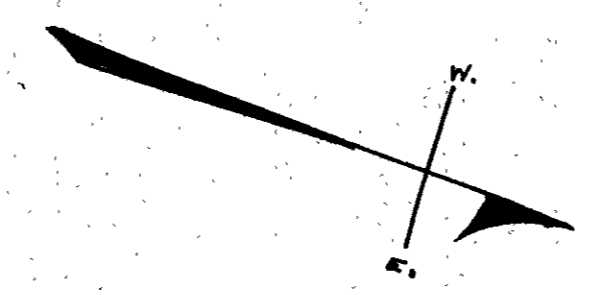
INDEXED ON MAP

SR292

ROAD NO. 12
PERRY TOWNSHIP
LOGAN COUNTY OHIO
1934

4
4

See 106-292-509
1965



Survey Notes Logan County Surveyors Book 574 Pages 1075-23
See Sheet No. 1 for Right-of-Way Record.
Right-of-Way Concrete Posts Set as Shown

Surveyed 1934 by F.F.Wright
Drawn 1936 by F.F.Wright

1532
INDEXED ON MAP