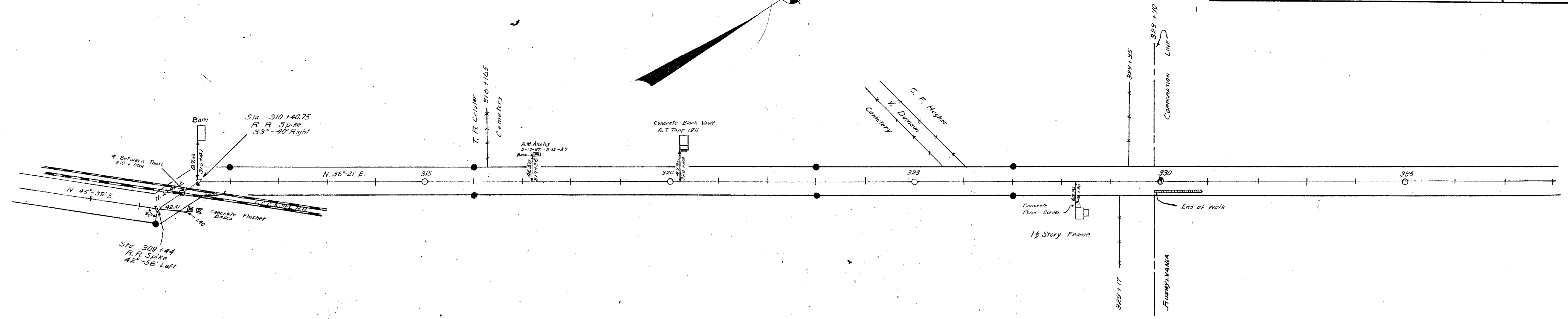
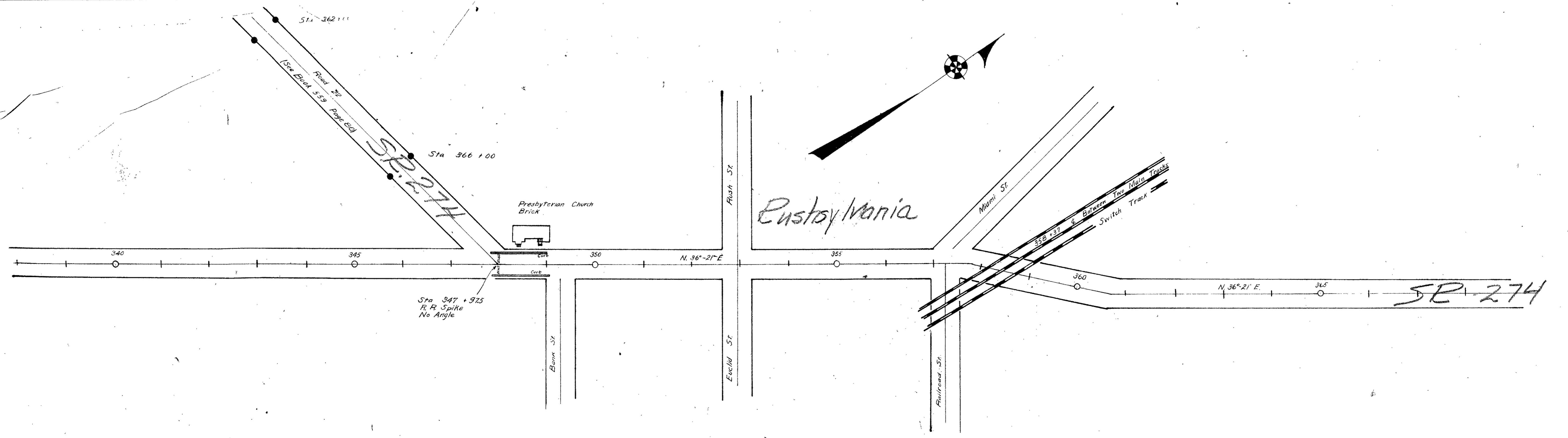


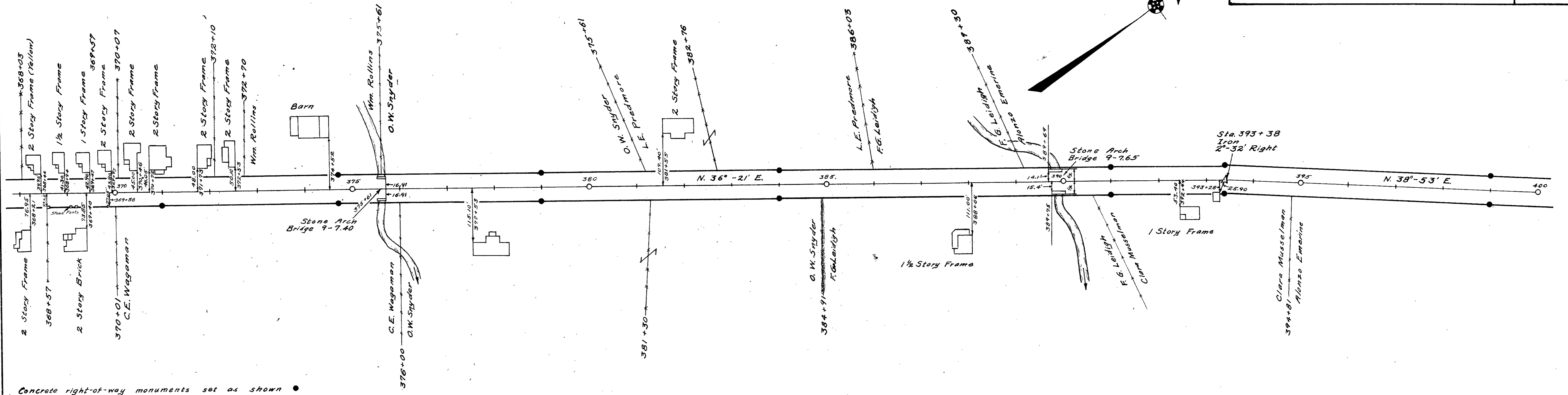
SP. 274



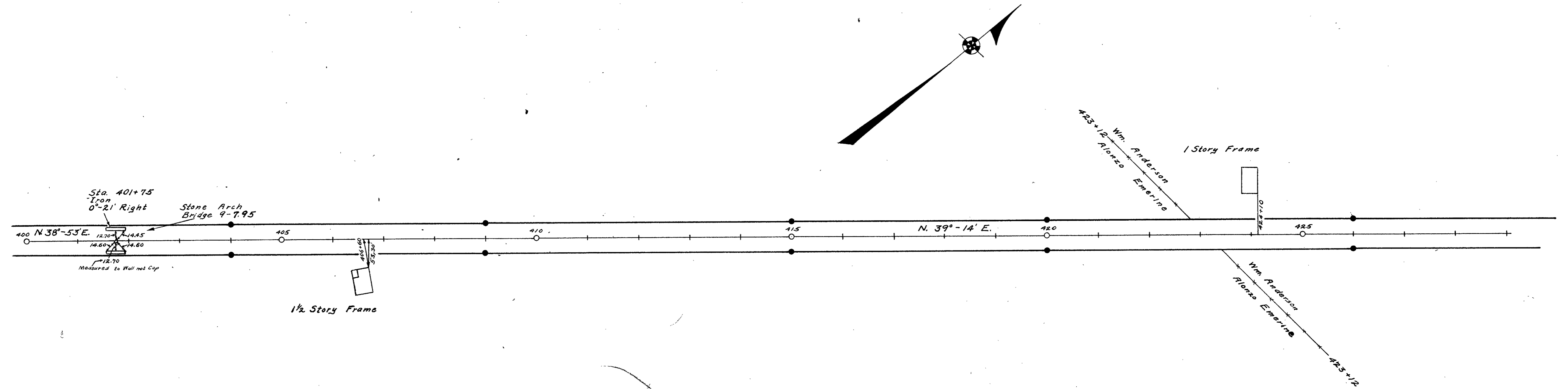
Concrete Right of Way Movements Set as Shown  
 Field Notes Book 578 Pages 8 to 53  
 Logan County Engineer's Office



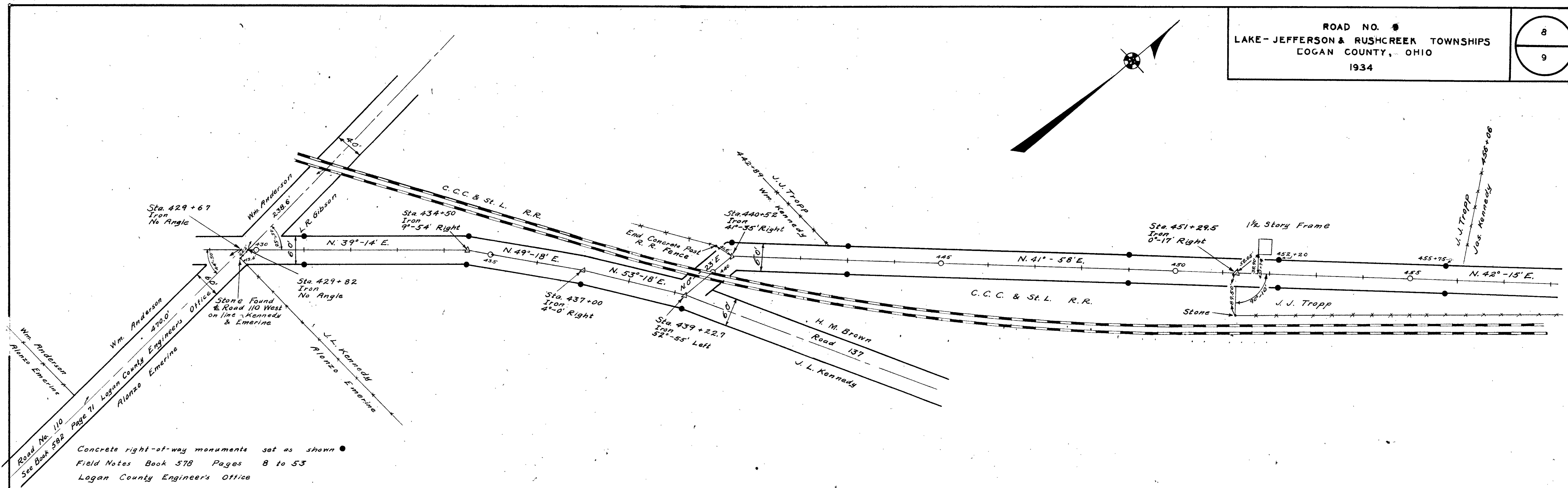
Surveyed By R. F. Wright  
 March 1934  
 Drawn By L. M. Core  
 June 1936



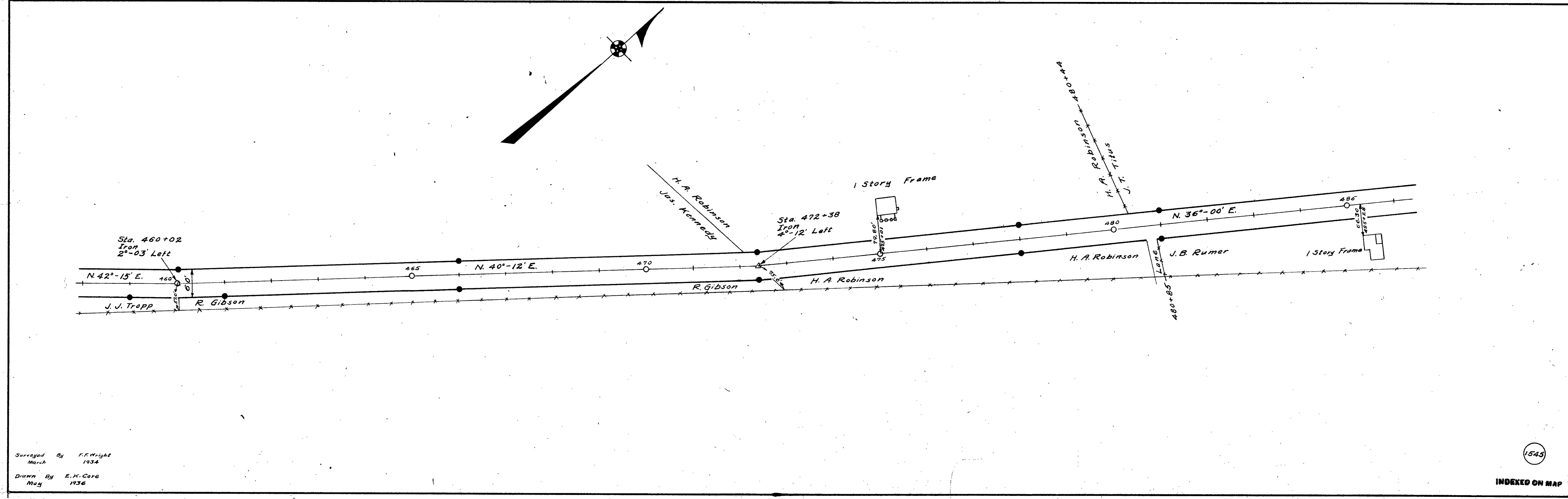
Concrete right-of-way monuments set as shown  
Field Notes Book 578 Pages 8 to 53  
Logan County Engineers Office



Surveyed By R. F. Wright  
March 1934  
Drawn By E. K. Core  
May 1936

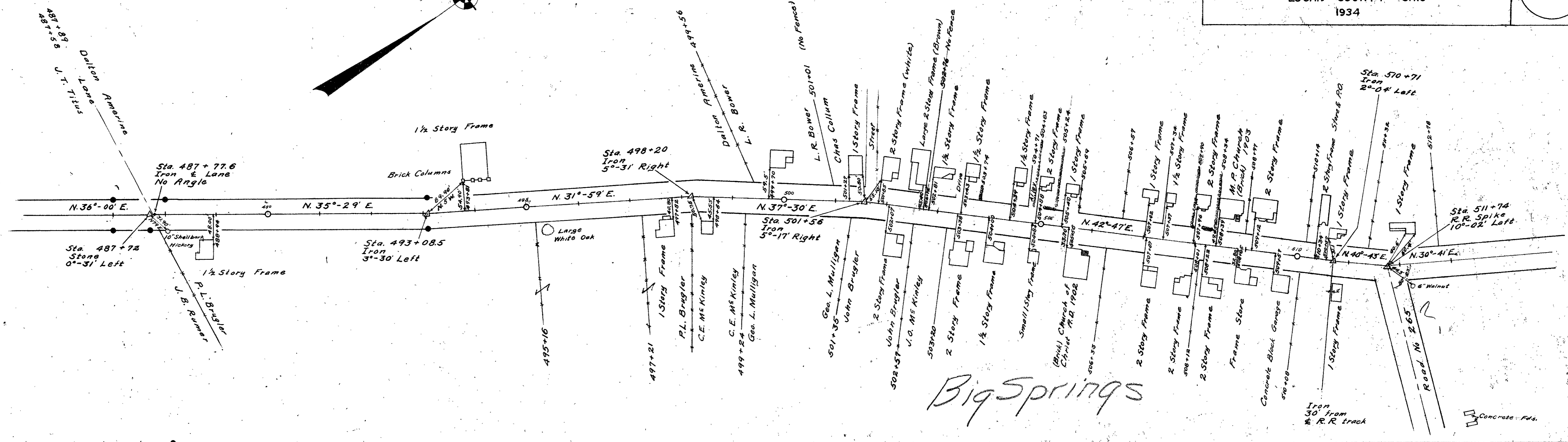
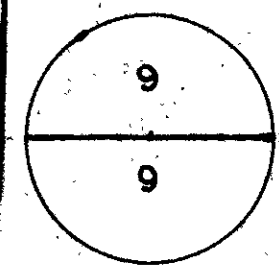


Concrete right-of-way monuments set as shown  
 Field Notes Book 578 Pages 8 to 53  
 Logan County Engineers Office



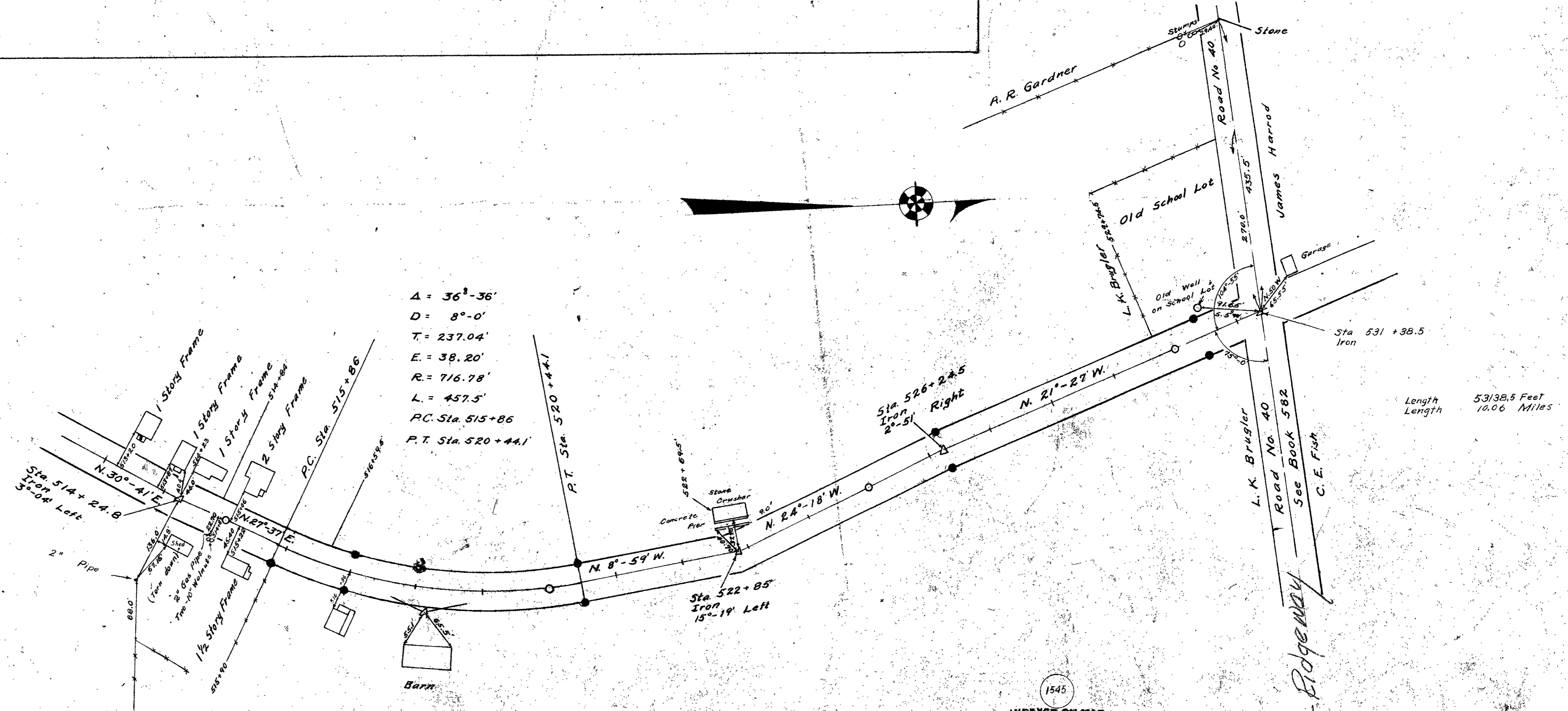
Surveyed By F.F. Wright  
 March 1934  
 Drawn By E.K. Care  
 May 1936





Concrete right-of-way monuments set as shown  
Field Notes Book 578 Pages 8 to 53  
Logan County Engineer's Office

ROAD 9



Surveyed By R.F. Wright  
March 1934  
Drawn By E.K. Cox  
June 1936

1545  
INDEXED ON MAP