

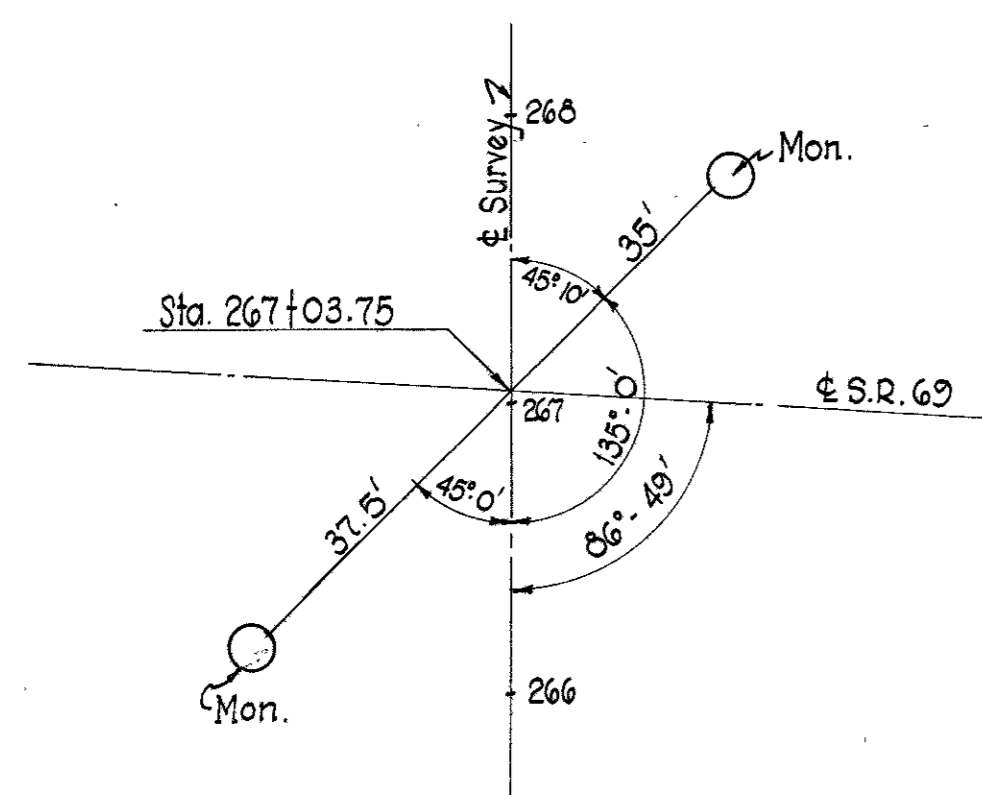
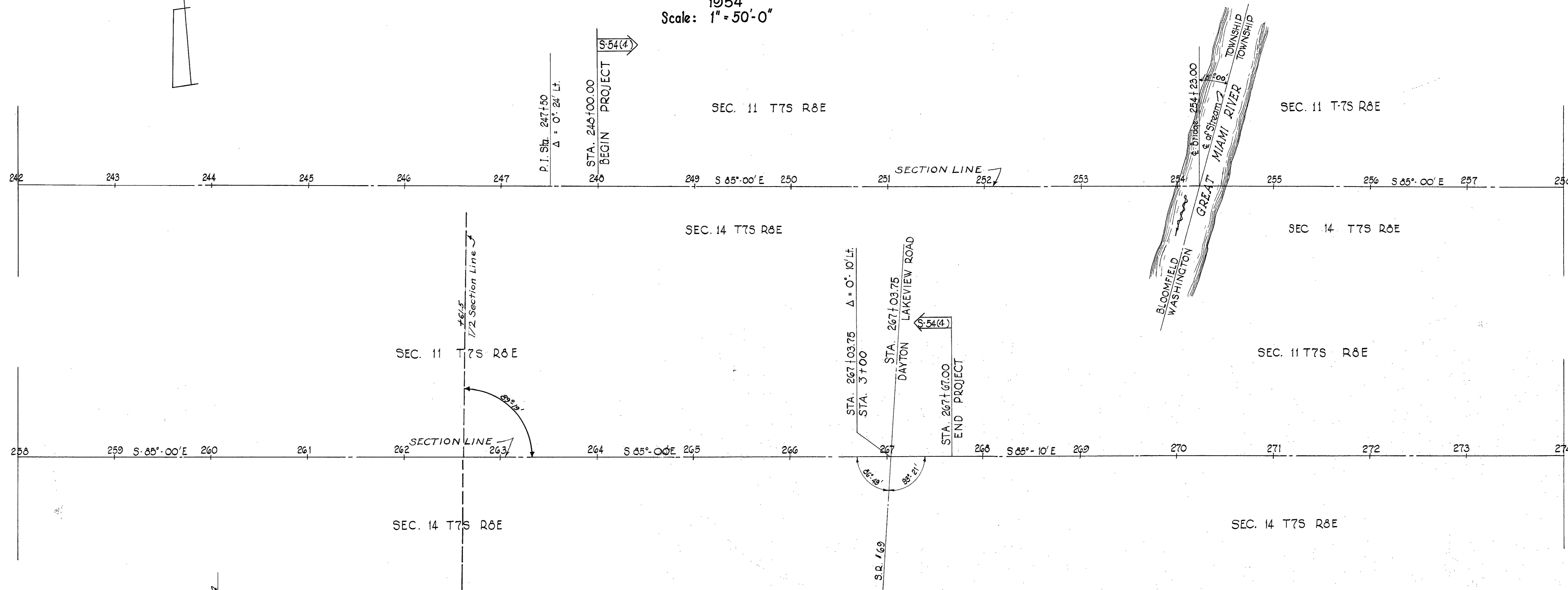
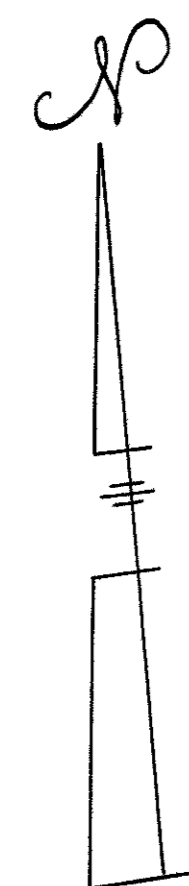
FED. RD. DIVISION	STATE	PROJECT	TYPE FUNDS
2	OHIO		

LOGAN COUNTY
LOG ~ 274 (4.67-5.03)
1954

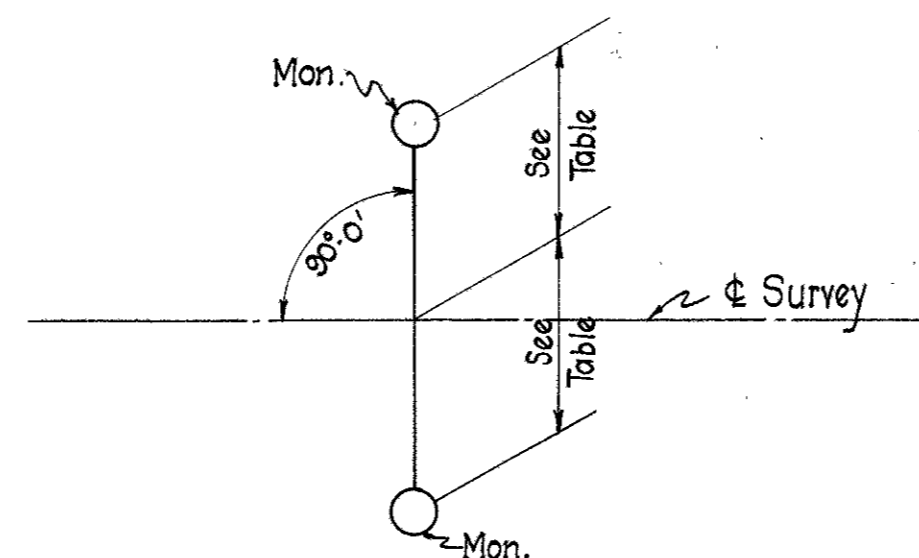
LOCATION PLAN

LOGAN COUNTY
LOG - 274 (4.67-5.03) CARTHAGENA ~ JACKSON CENTER ~ RUSHSYLVANIA ROAD
BLOOMFIELD & WASHINGTON TOWNSHIP

1954
Scale: 1" = 50'-0"



SPECIAL DETAIL FOR SETTING REFERENCE POINTS STA 267+03.75



TYPICAL DETAIL FOR SETTING REFERENCE POINTS

STATION	REFERENCE POINTS TO BE SET AFTER CONSTRUCTION	
	Distance from Left	Distance from Right
240+00	16'	16'
253+00	16'	16'
250+00	16'	16'
263+00	16'	16'
266+50	16'	16'
267+03.75	See Special	Detail

Completed 16 Jan 1956 By: K. Stewart

Recorded
Plat Book - 1 - P.7

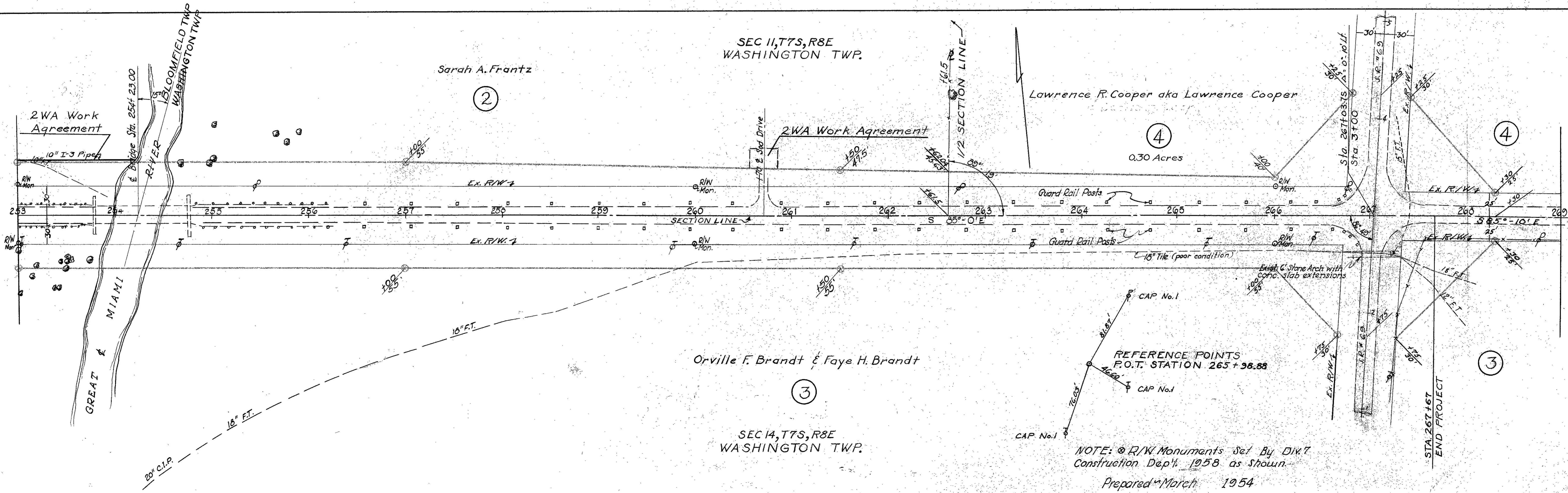
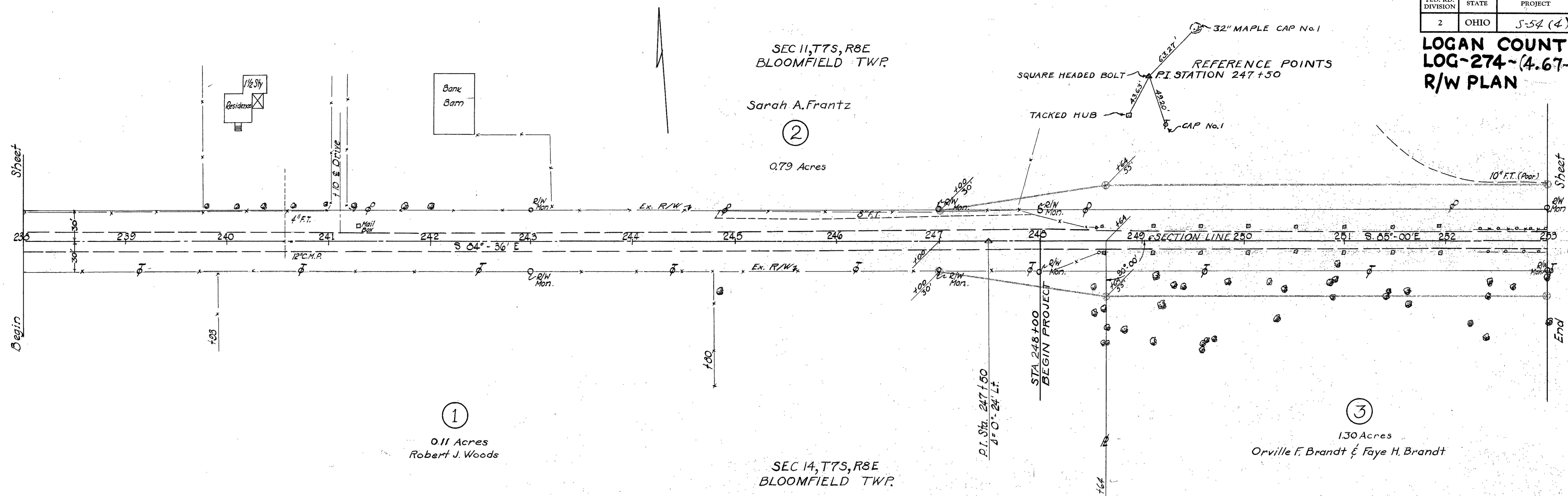
APPROVED 3-15-54 O.W. Enshmeier
LOCATION & DESIGN ENGINEER

REG. PROFESSIONAL ENGINEER No. 1336

FED. RD. DIVISION	STATE	PROJECT	TYPE FUNDS
2	OHIO	5-54 (4)	

19

**LOGAN COUNTY
LOG-274-(4.67-5.03)
R/W PLAN**



NOTE: R/W Monuments Set By DIRT Construction Dep't. 1958 as Shown.
Prepared March 1954

FED. RD. DIVISION	STATE	PROJECT	TYPE FUNDS
2	OHIO		

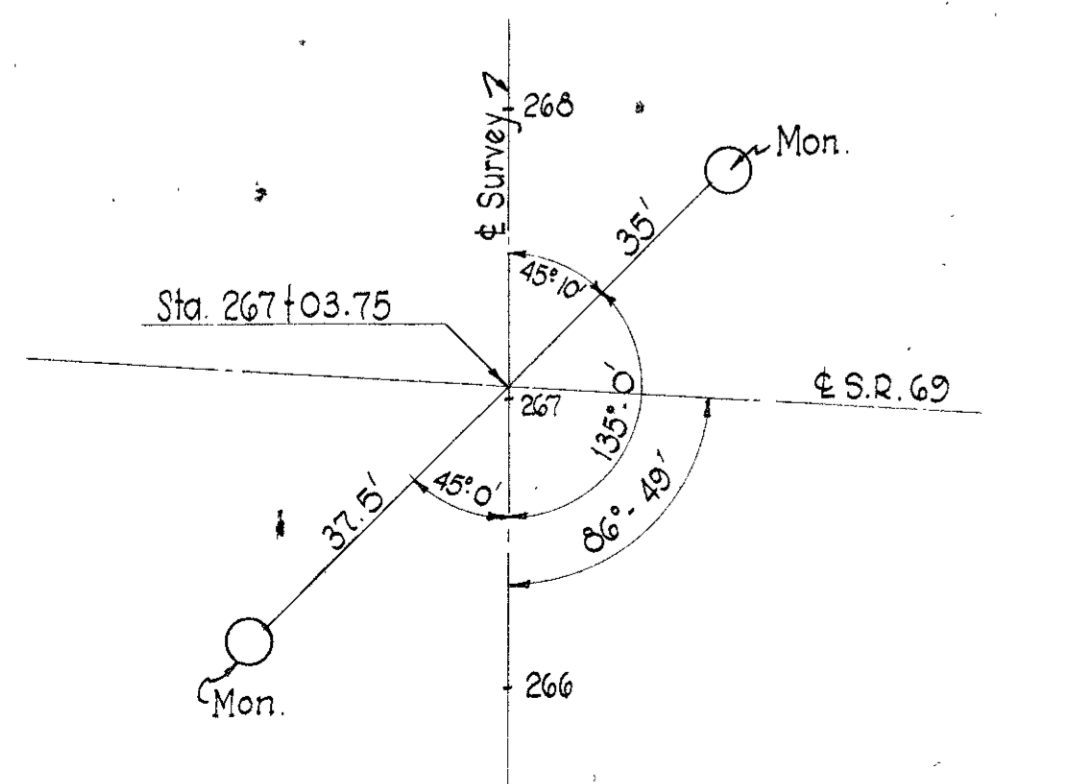
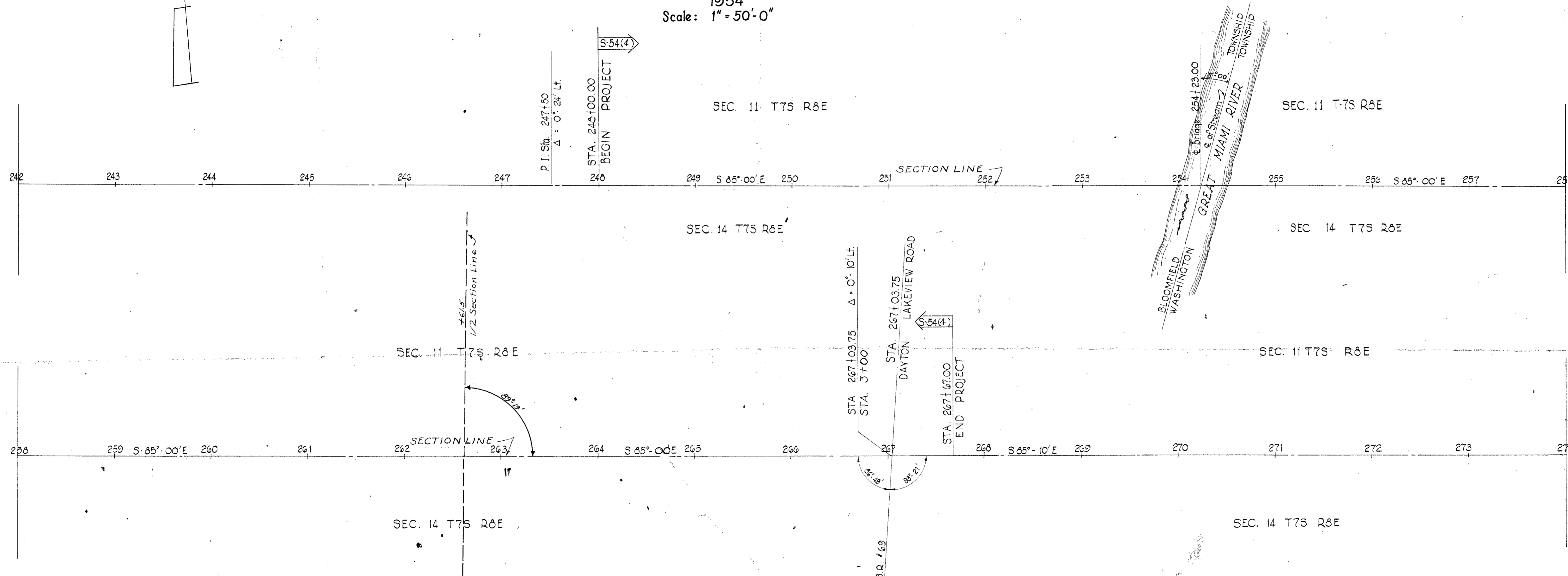
LOGAN COUNTY
LOG - 274 (4.67-5.03)
1954

NOV 22 1954

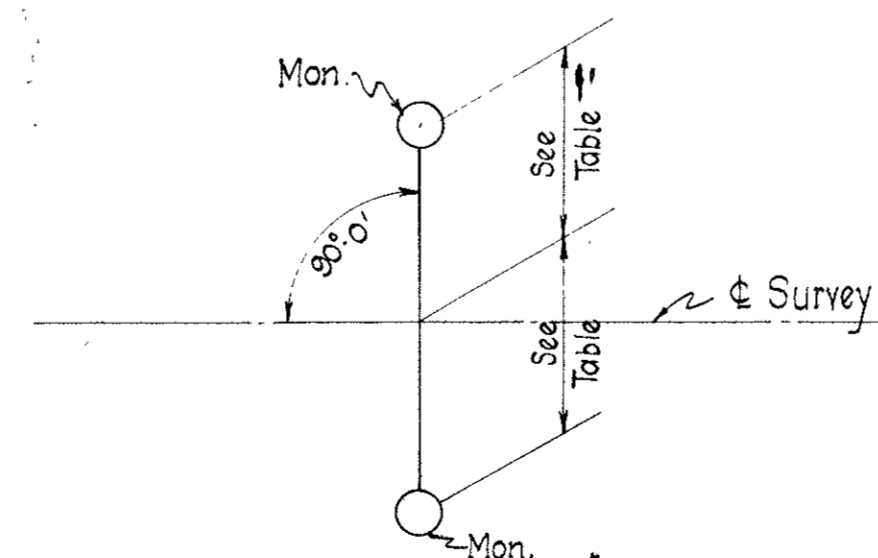
LOCATION PLAN

LOGAN COUNTY
LOG - 274 (4.67-5.03) · CARTHAGENA ~ JACKSON CENTER ~ RUSHSYLVANIA ROAD
BLOOMFIELD & WASHINGTON TOWNSHIP

1954
Scale: 1" = 50'-0"



SPECIAL DETAIL FOR SETTING REFERENCE POINTS STA 267+03.75



TYPICAL DETAIL FOR SETTING REFERENCE POINTS

REFERENCE POINTS TO BE SET AFTER CONSTRUCTION

STATION	Distance from ϵ	
	Left	Right
246+00	16'	16'
253+00	16'	16'
258+00	16'	16'
263+00	16'	16'
266+50	16'	16'
267+03.75	See Special Detail	

*Monuments Set
Jan 16th by
Stewart
Allen
Craig
Summers
Head
Miller
McKerian*

Completed Jan 16th 1954 By: K. Stewart.

Recorded
Plat Book - 1 - P-7

APPROVED 3-15-54

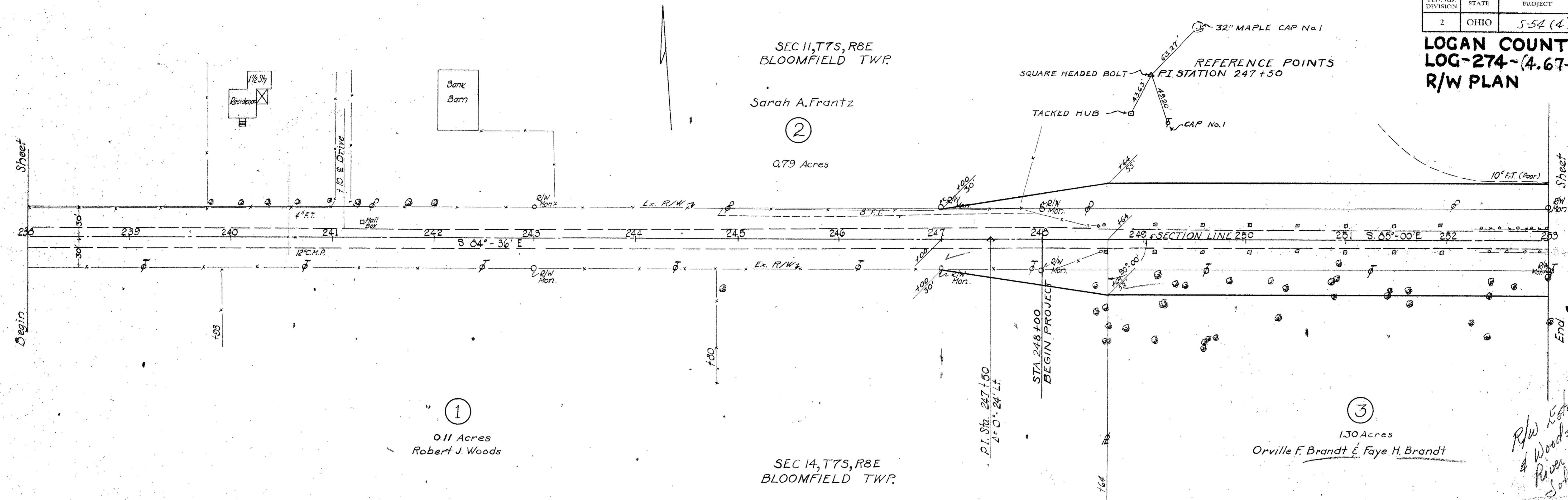
O.W. Anshmeyer
LOCATION & DESIGN ENGINEER

REG. PROFESSIONAL ENGINEER NO. 1336

FED. RD. DIVISION	STATE	PROJECT	TYPE FUNDS
2	OHIO	S-54 (4)	

19
19

**LOGAN COUNTY
LOG-274-(4.67-5.03)
R/W PLAN**



R/W Established for Brandt & Woods on S. side of River. 15 Apr. 54 by John Shuff.

