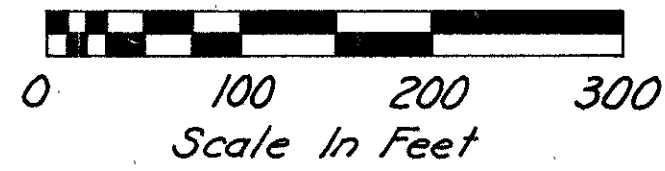


Note: All bearings are grid bearings.
See LOG-235-18.34/LOG-708-0.80
& plat for state plane coordinate
traverse.

CENTERLINE PLAT



Washington Township
Sec. 11-T.75-R.8.E.

S.T. Sta 23+73.68 Prop. S.R. 708

C.S. Sta. 21+23.68 Prop. S.R. 708

FHWA REGION	STATE	PROJECT	62
5	OHIO		68
LOGAN COUNTY			1
LOG-235-15.27			7
LOG-708-0.00			

Washington Township
Sec. 12-T.75-R.8.E.

PROP. S.R. 708 CURVE DATA
 P.I. Sta. 17+85.61
 $\Delta = 92^\circ 39' 26''$ Lt. $Q_s = 8^\circ 45'$
 $D = 7^\circ 00'$ $X_c = 249.42'$
 $R = 818.51'$ $Y_c = 12.71'$
 $T_s = 985.61'$ $p = 3.18'$
 $L_s = 250.00'$ $k = 124.90'$
 $L_c = 1073.68'$ $E_s = 371.45'$

PROP. S.R. 708 CURVE DATA
 P.I. Sta. 3+84.10
 $\Delta = 16^\circ 06' 06''$ Lt.
 $D = 2^\circ 30'$
 $R = 2291.83'$
 $T = 324.17'$
 $L = 644.07'$
 $E = 22.81'$

P.O.C. Sta. 15+86.84 Prop. S.R. 708 =
P.O.T. Sta. 53+59.63 Prop. TR. 61

PROP. TR. 61 CURVE DATA
 P.I. Sta. 50+00.00
 $\Delta = 43^\circ 40' 17''$ Lt.
 $D = 19^\circ 00'$
 $R = 301.56'$
 $T = 120.83'$
 $L = 229.85'$
 $E = 23.31'$

S.R. 235 CURVE DATA
 P.I. Sta. 812+38.75
 $\Delta = 79^\circ 44' 20''$ Lt.
 $D = 20^\circ 00'$
 $R = 286.48'$
 $T = 239.27'$
 $L = 398.69'$
 $E = 86.78'$

S.R. 235 CURVE DATA
 P.I. Sta. 795+43.76
 $\Delta = 12^\circ 46' 40''$ Lt.
 $D = 4^\circ 00'$
 $R = 1432.39'$
 $T = 160.39'$
 $L = 319.44'$
 $E = 8.95'$
 P.C. Sta. 793+83.37
 P.T. Sta. 797+02.81

REFERENCE POINTS S.R. 235	
P.I. Sta. 795+43.76 All Ref. Points Are I.P.'s W/Cap. 	P.O.T. Sta. 807+86.74
P.C. Sta. 809+99.48 	P.I. Sta. 812+38.75
P.T. Sta. 813+98.17 	P.O.T. Sta. 820+00.00
Ex. S.R. 708 P.I. Sta. 5+19.91 	P.O.T. Sta. 12+00.00
P.I. Sta. 17+87.09 	P.O.T. Sta. 23+04.03

REFERENCE POINTS Prop. S.R. 708	
P.C. Sta. 0+59.93 	P.I. Sta. 3+84.10
P.T. Sta. 7+04.00 	T.S. Sta. 8+00.00

P.I. Sta. 17+87.09 Ex. S.R. 708 =
 P.I. Sta. 17+85.61 Prop. S.R. 708 =
 P.I. Sta. 50+00.00 Prop. TR. 61
 R.R. Spike Set

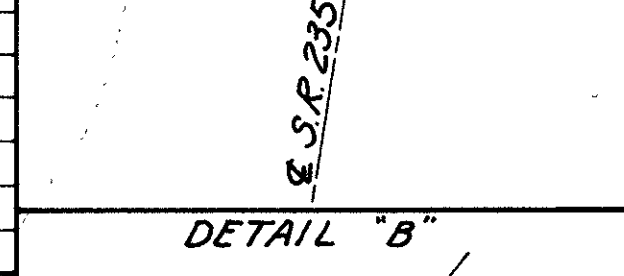
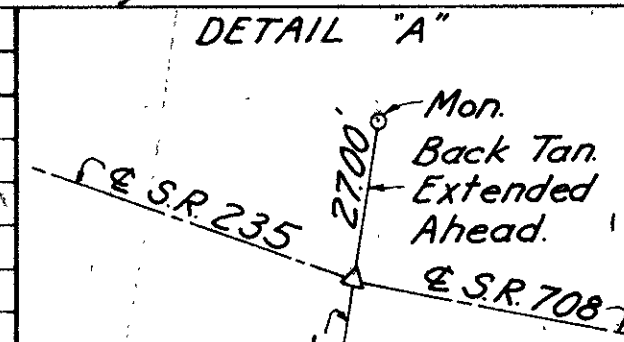
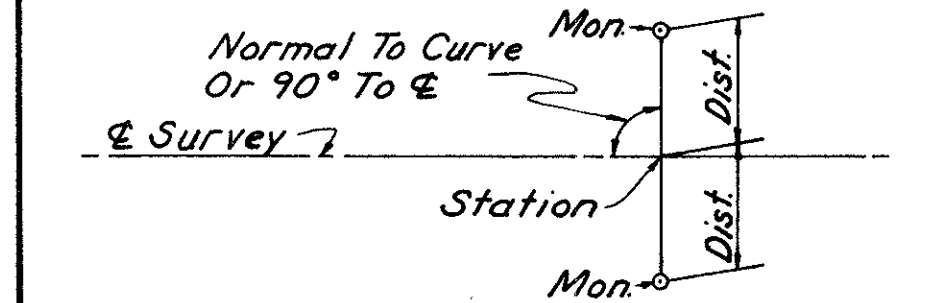
REFERENCE POINTS Prop. S.R. 708	
S.C. Sta. 10+50.00 	C.S. Sta. 21+23.68
S.T. Sta. 23+73.68 	P.C. Sta. 48+79.17 Prop. TR. 61
Prop. Twp Rd. 61 P.C. Sta. 48+79.17 	P.T. Sta. 51+09.02

Monument Quantities Carried To Sheet 5 Of 68.

& REFERENCE MONUMENTS TO BE SET BY CONTRACTOR
See Standard Construction Drawing MC-1

Station	& REFERENCE MONUMENTS	
	Left	Right
S.R. 235		
P.O.T. Sta. 803+00	22.00'	28.00'
P.C. Sta. 809+99.48	36.00'	21.00'
P.I. Sta. 812+38.75	See Detail "A"	
P.T. Sta. 813+98.17	32.00'	21.00'
S.R. 708		
P.I. Sta. 3+84.10	Set On P.I.	
T.S. Sta. 8+00.00	21.00'	21.00'
P.I. Sta. 17+85.61	Set On P.I.	
P.O.C. Sta. 15+86.84	See Detail "B"	
S.T. Sta. 23+73.68	21.00'	21.00'

TYPICAL DETAIL FOR LOCATION OF & REFERENCE MONUMENTS
 & Reference Monuments To Be Set At Stations & Distances As Indicated In Table Above.



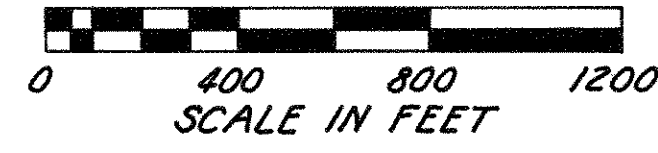
Stone Found
S.E. Corner of the
N.E. Qtr. of Section 11.

I hereby certify that this plat is a true delineation of a survey made by the Ohio Department of Transportation in 1985.

Richard R. Helmlinger
Richard R. Helmlinger - Registered Surveyor #5421

RECORDED
LOGAN COUNTY
Date: 11-27-85
Vol.: 1
Page: 76

PROPERTY MAP



NOTE: The locations of the underground utilities shown on the plans are as obtained from the owners of the utility as required by Section 153.64 O.R.C.

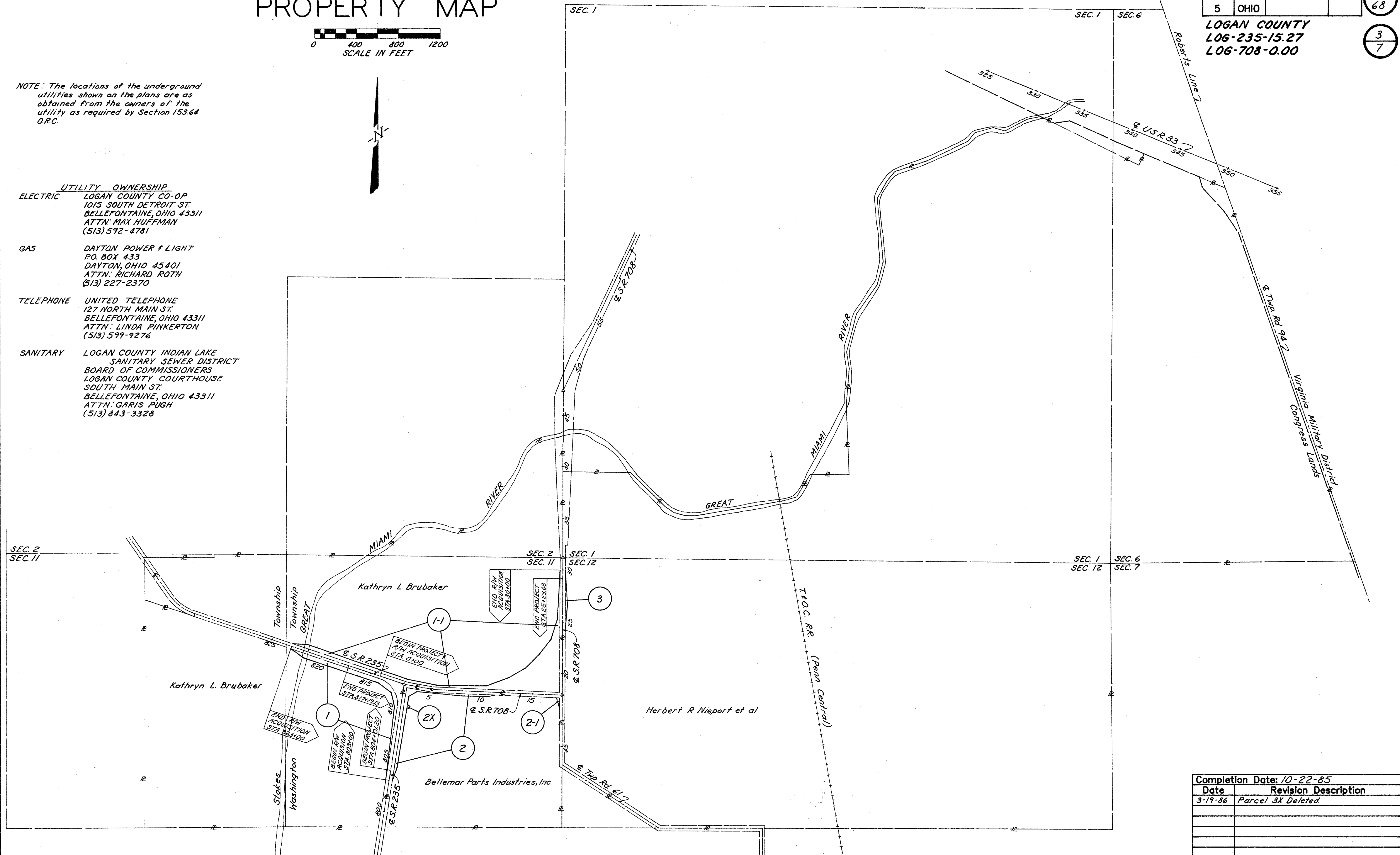
- UTILITY OWNERSHIP**
- ELECTRIC** LOGAN COUNTY CO-OP
1015 SOUTH DETROIT ST.
BELLEFONTAINE, OHIO 43311
ATTN: MAX HUFFMAN
(513) 592-4781
 - GAS** DAYTON POWER & LIGHT
P.O. BOX 433
DAYTON, OHIO 45401
ATTN: RICHARD ROTH
(513) 227-2370
 - TELEPHONE** UNITED TELEPHONE
127 NORTH MAIN ST.
BELLEFONTAINE, OHIO 43311
ATTN: LINDA PINKERTON
(513) 599-9276
 - SANITARY** LOGAN COUNTY INDIAN LAKE
SANITARY SEWER DISTRICT
BOARD OF COMMISSIONERS
LOGAN COUNTY COURTHOUSE
SOUTH MAIN ST.
BELLEFONTAINE, OHIO 43311
ATTN: GARIS PUGH
(513) 843-3328

FHWA REGION	STATE	PROJECT
5	OHIO	

LOGAN COUNTY
LOG-235-15.27
LOG-708-0.00

64
68

3
7



Completion Date: 10-22-85	
Date	Revision Description
3-19-86	Parcel 3X Deleted

TOTAL NUMBER OF ---
3 OWNERSHIPS
0 TOTAL TAKES
0 OWNERSHIPS WITH STRUCTURES INVOLVED
1 OWNERSHIPS WITH "P" ITEMS

SUMMARY OF ADDITIONAL RIGHT OF WAY

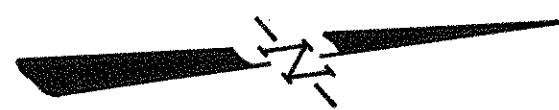
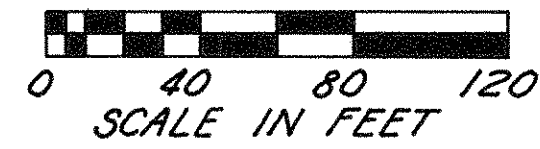
CALC. BY	LOGAN COUNTY	OHIO	65
DATE	LOG-235-15.27	FHWA REGION 5	68
CHKD. BY	LOG-708-0.00		
DATE			
FEDERAL PROJECT	STATE PROJECT	07580(0)	4
			7

PARCEL	OWNER	SHEET NO.	OWNERS RECORD		RECORD AREA	TOTAL P.R.O.	GROSS TAKE	P.R.O. IN TAKE	NET TAKE	STRUC-TURE	NET RESIDUE		TYPE FUND	REMARKS AND PERSONALTY	AS ACQUIRED	
			BOOK	PAGE							LEFT	RIGHT			BOOK	PAGE
1	Kathryn L. Brubaker	5	232	384	206.95±	8.02±	2.858	1.626	1.232	P	192.16±			Deed Tracts 3 & 4 Only. P= Signs.	25	149
1-1	" " "	5,6,7					7.892	2.356	5.536						25	150
2	Bellemar Parts Industries, Inc.	5,6	406	577	49.42±	2.20±	2.022	1.145	0.877			46.31±			16	561
2-1	" " " "	7					0.117	0.086	0.031						16	563
2X	" " " "	5,6					0.020		0.020						16	564
3	Herbert R. Nieport et al	7	391	614	720.835±	2.88±	0.442	0.316	0.126			717.83±			24	802

BRUNING 44-560-29600

REV.	DATE	DESCRIPTION
3X	3-19-86	Deleted

WASHINGTON TOWNSHIP
SEC. 11-T7S-R8E



FHWA REGION	STATE	PROJECT	66
5	OHIO		68
			5
			7

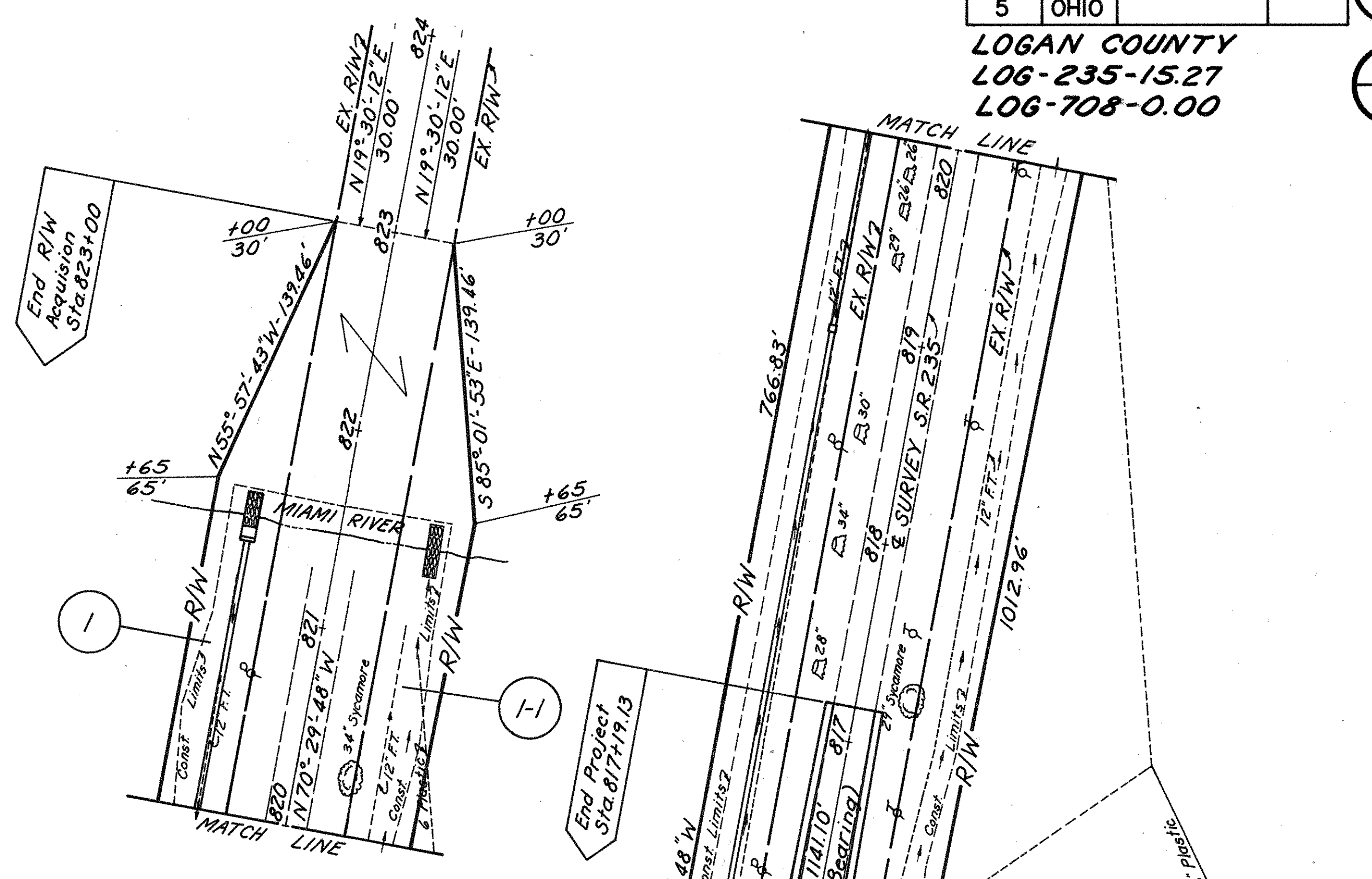
LOGAN COUNTY
LOG-235-15.27
LOG-708-0.00

Note: For existing R/W of S.R. 235,
see Logan County I.C.H. 27 Sec. B,
R/W plans. R/W=60'

S.R. 708=50'
Comm. Journal W, Page 108, 1927
" " Z, " 19, 1935
" " Z, " 120, 1935

TR 61=50'

All bearings are grid bearings.

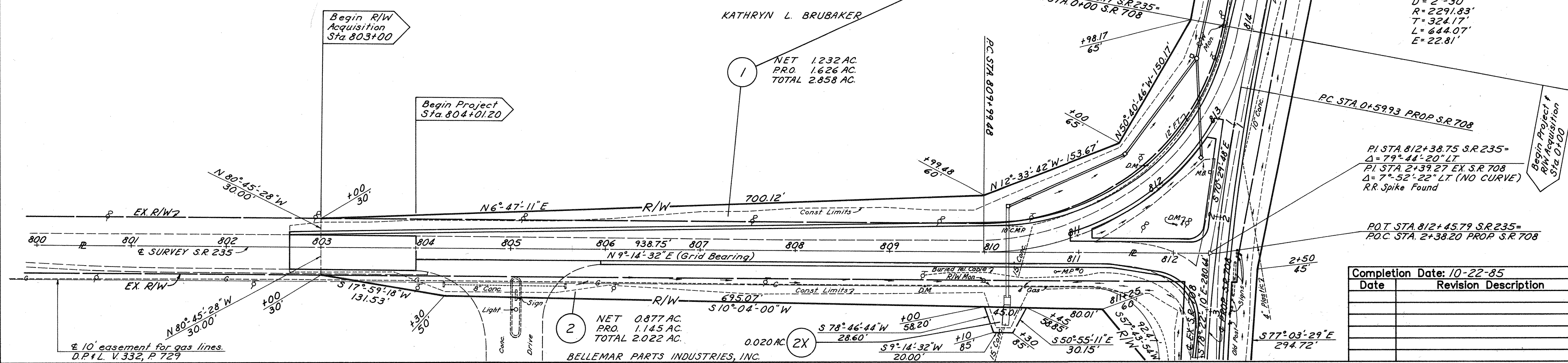


SR 235 CURVE DATA
PI STA 812+38.75
 $\Delta = 79^\circ 44' 20''$ LT.
D=20'
R=286.48'
T=239.27'
L=398.69'
E=86.78'

PROP. S.R. 708 CURVE DATA
PI STA 3+84.10
 $\Delta = 16^\circ 06' 06''$ LT.
D=2°30'
R=2291.83'
T=324.17'
L=644.07'
E=22.81'

KATHRYN L. BRUBAKER
NET 1.232 AC.
PRO. 1.626 AC.
TOTAL 2.858 AC.

PI STA 812+38.75 S.R. 235=
 $\Delta = 79^\circ 44' 20''$ LT.
PI STA 2+39.27 EX. S.R. 708
 $\Delta = 7^\circ 52' 22''$ LT (NO CURVE)
R.R. Spike Found



NET 0.877 AC.
PRO. 1.145 AC.
TOTAL 2.022 AC.
BELLEMAR PARTS INDUSTRIES, INC.

Completion Date: 10-22-85	
Date	Revision Description

R/W PLAN S.R. 235 STA. 800+00 TO STA. 824+00

WASHINGTON TOWNSHIP
SEC. 11-T. 7S-R. 8E.

Note: All bearings are grid bearings.



FHWA REGION	STATE	PROJECT	
5	OHIO		

67
68

LOGAN COUNTY
LOG-235-15.27
LOG-708-0.00

6
7

KATHRYN L. BRUBAKER

NET 5.536 AC.
PRO. 2.356 AC.
TOTAL 7.892 AC.

PROP. S.R. 708 CURVE DATA

PI. STA. 17+85.61
 $\Delta = 92^\circ 39' 26''$ LT. R=818.51'
 D=7°00' $\Theta_s = 8^\circ 45'$
 T_s=985.61' X_c=249.42'
 L_s=250.00' Y_c=12.71'
 L_c=1073.68' P=3.18'
 E_s=371.45' K=124.90'
 T.S. STA. 8+00.00 C.S. STA. 21+23.68
 S.C. STA. 10+50.00 S.T. STA. 23+73.68

PROP. S.R. 708 CURVE DATA

PI. STA. 3+84.10
 $\Delta = 16^\circ 06' 06''$ LT.
 D=2°30'
 R=2291.83'
 T=324.17'
 L=644.07'
 E=22.81'

S.R. 235 CURVE DATA

PI. STA. 812+38.75
 $\Delta = 79^\circ 44' 20''$ LT.
 D=20°
 R=286.48'
 T=239.27'
 L=398.69'
 E=86.78'

NET 1.232 AC.
PRO. 1.626 AC.
TOTAL 2.858 AC.

NET 0.877 AC.
PRO. 1.145 AC.
TOTAL 2.022 AC.

BELLEMAR PARTS INDUSTRIES, INC.

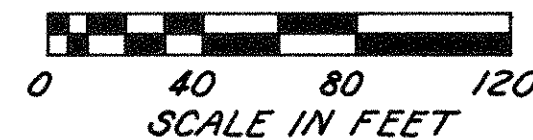
WASHINGTON TOWNSHIP
SEC. 11-T. 7S-R. 8E.

R/W PLAN S.R. 708 STA. 0+00 TO STA. 15+00

Completion Date: 10-22-85	
Date	Revision Description

Note: All bearings are grid bearings.

WASHINGTON TOWNSHIP
SEC. 12-T. 7S-R. 8E.



FHWA REGION	STATE	PROJECT	68
5	OHIO		68
			7
			7

LOGAN COUNTY
LOG-235-15.27
LOG-708-0.00

BELLEMAR PARTS INDUSTRIES, INC.

P.O.C. STA. 15+86.84 PROP. S.R. 708 =
P.O.T. STA. 53+59.63 PROP. T.R. 61

PROP. S.R. 708 CURVE DATA

PI STA. 17+85.61 R= 818.51'
 $\Delta = 92^{\circ}39'26''$ LT. $\theta_s = 8^{\circ}45'$
 D= 7^{\circ}00' $X_c = 249.42'$
 Ts= 985.61' $Y_c = 12.71'$
 Ls= 250.00' P= 3.18'
 Lc= 1073.68' K= 124.90'
 Es= 371.45' T.S. STA. 8+00.00 C.S. STA. 21+23.68
 S.C. STA. 10+50.00 S.T. STA. 23+73.68

PROP. T.R. 61 CURVE DATA

PI STA. 50+00.00
 $\Delta = 43^{\circ}40'17''$ LT.
 D= 19^{\circ}00'
 R= 301.56'
 T= 120.83'
 L= 229.85'
 E= 23.31'

NET 0.031 AC.
 PRO. 0.086 AC.
 TOTAL 0.117 AC.

10' easement
 for gas lines.
 D.P. # L. V. 332,
 P. 729.

NET 5.536 AC.
 PRO. 2.356 AC.
 TOTAL 7.892 AC.

NET 0.126 AC.
 PRO. 0.316 AC.
 TOTAL 0.442 AC.

HERBERT R. NIEPORT, STANLEY G. HINES, DENZIL E. ADKINS,
 JACK L. LUTZ, ROBERT D. TURNER & DONALD E. LEIS

PI STA. 17+87.09 EX. S.R. 708 =
 PI STA. 17+85.61 PROP. S.R. 708 =
 PI STA. 50+00 PROP. T.R. 61
 R.R. SPIKE SET

NOTE: THIS STONE WAS FOUND
 10-5-84 & IS 0.97' LEFT OF
 STA. 30+49.95 AS SHOWN ON
 LOG-708-0.68 R/W PLANS.

PI STA. 31+16.76
 $\Delta = 0^{\circ}01'58''$ LT.
 SET UP WITH CAP
 OVER STONE (FOUND)
 N.E. COR. SEC. 11

Completion Date: 10-22-85	
Date	Revision Description
3-19-86	Parcel 3X Deleted.

WASHINGTON TOWNSHIP
SEC. 12-T. 7S-R. 8E.

R/W PLAN S.R. 708 STA. 13+00 TO STA. 32+00 - TWP. RD. 61