

L-21

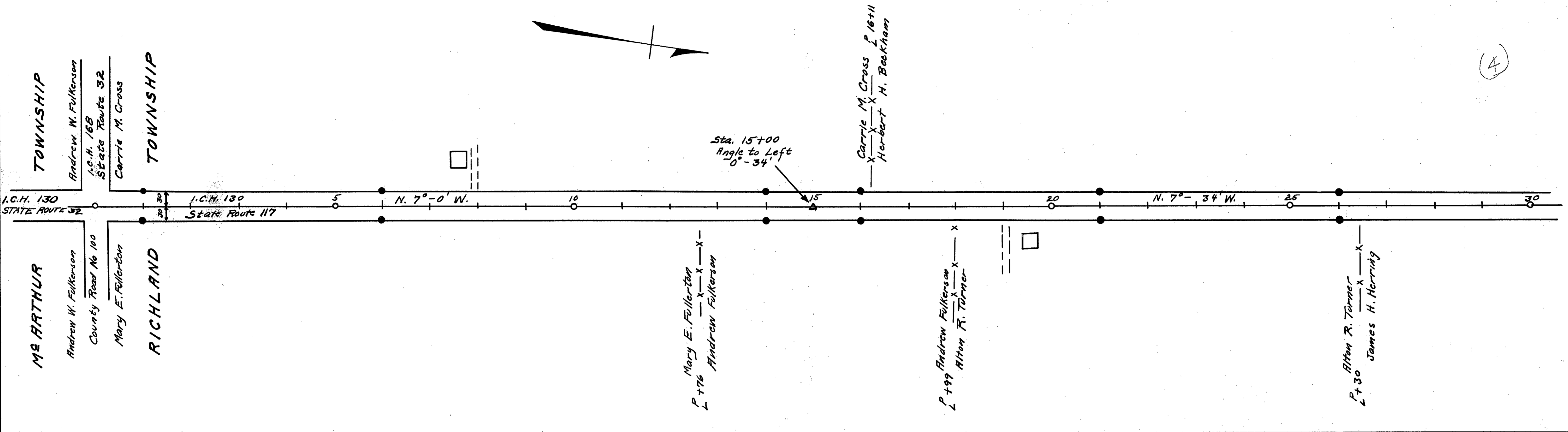
L-21

LOGAN COUNTY  
S.H. 130 SEC. D  
R/W PLANS

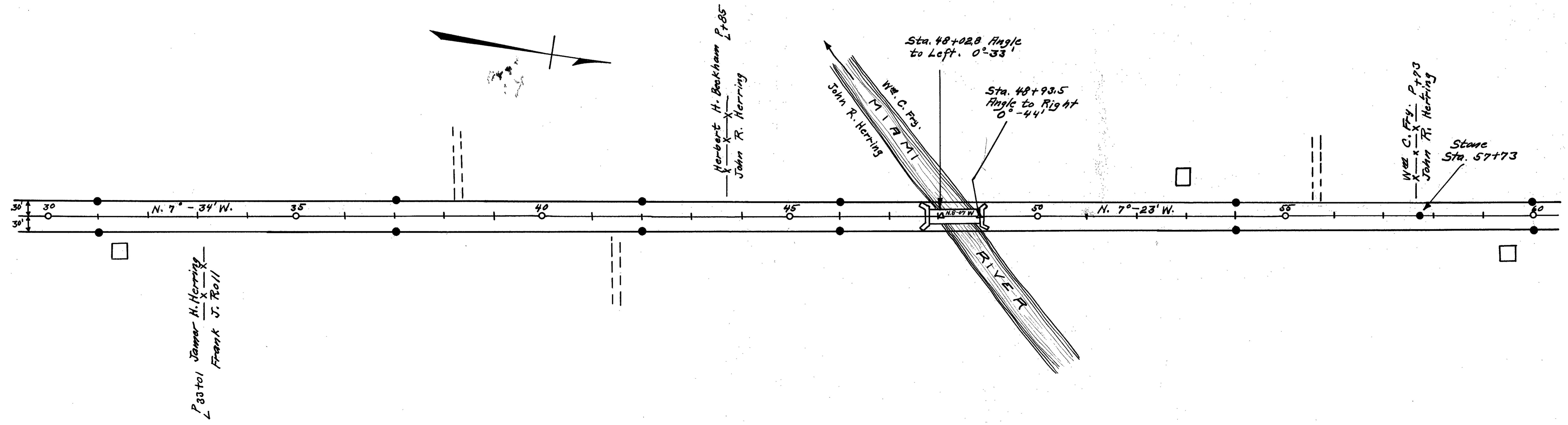
1  
4

(4)

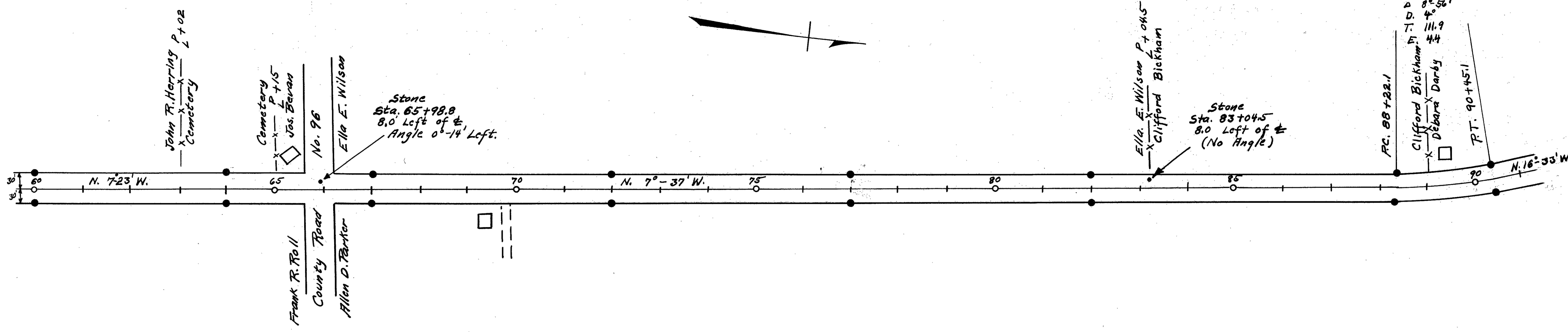
Indicates R/W Monuments



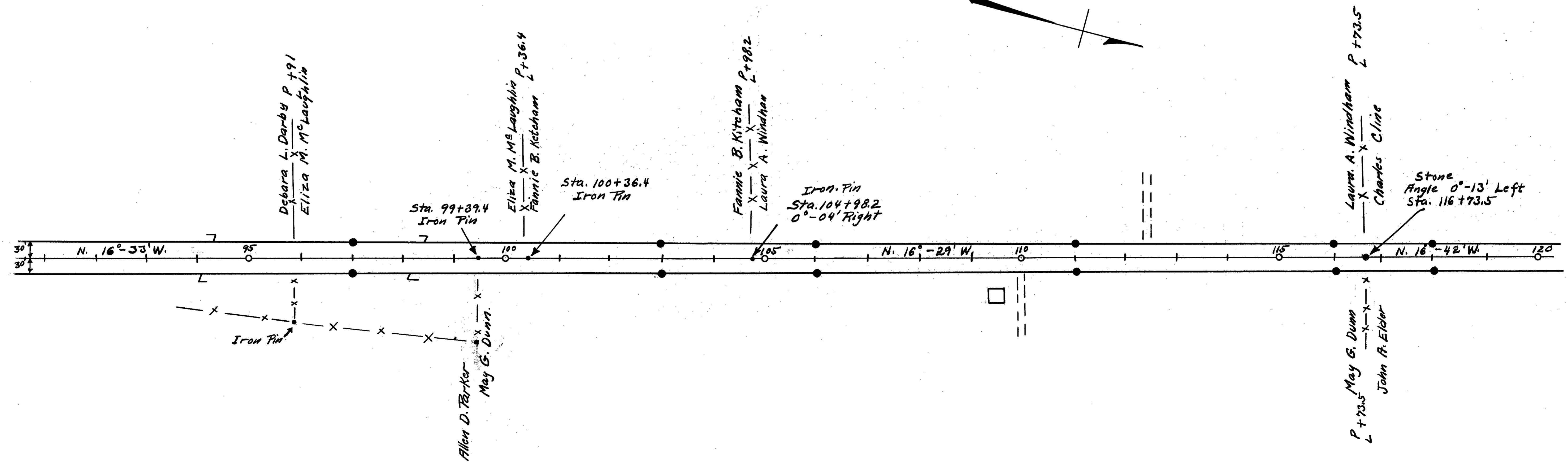
Field Notes in Logan County  
Surveyor's Book No. 387



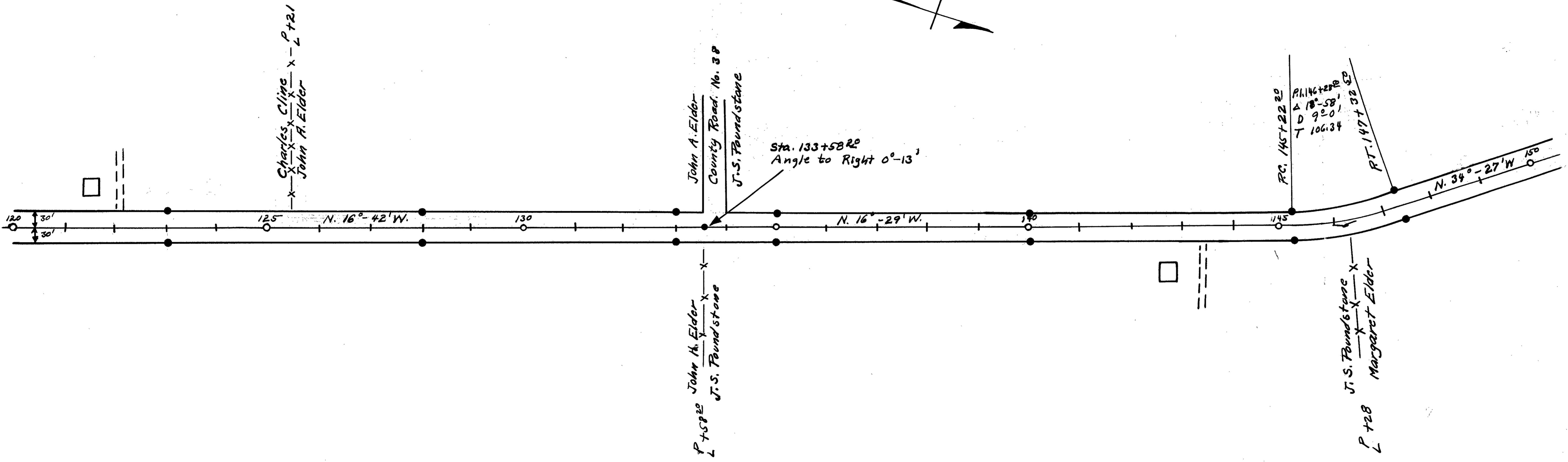
● Indicates R/W Monuments



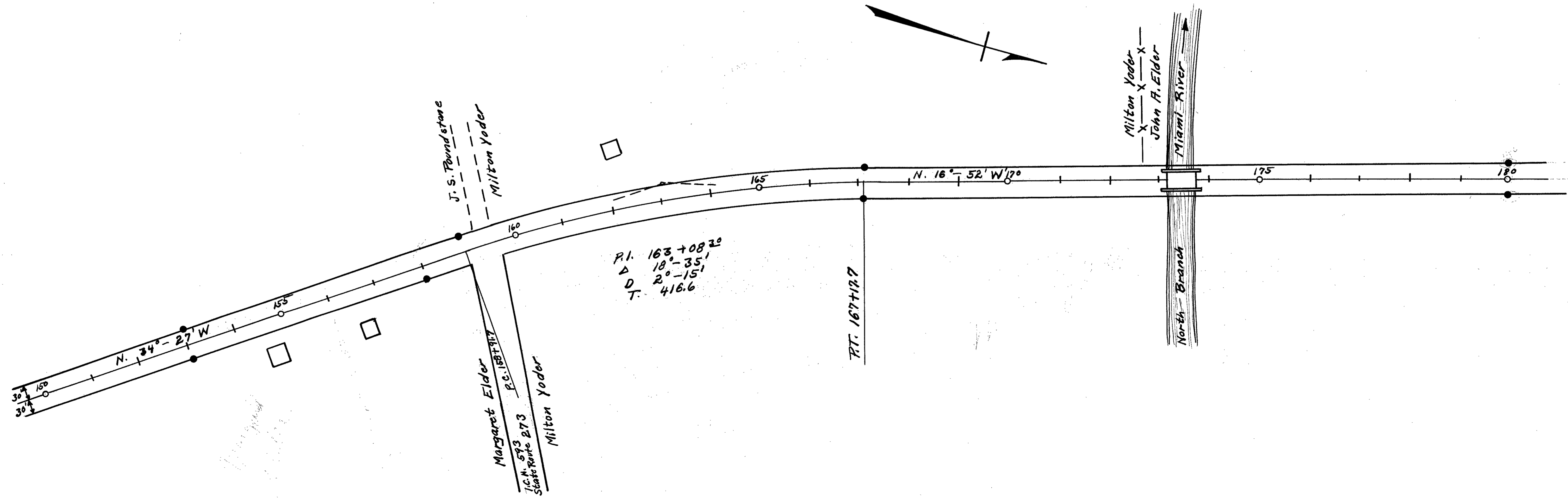
Survey Notes in Logan County  
Surveyors Book No. 387



● Indicates R/W Monuments



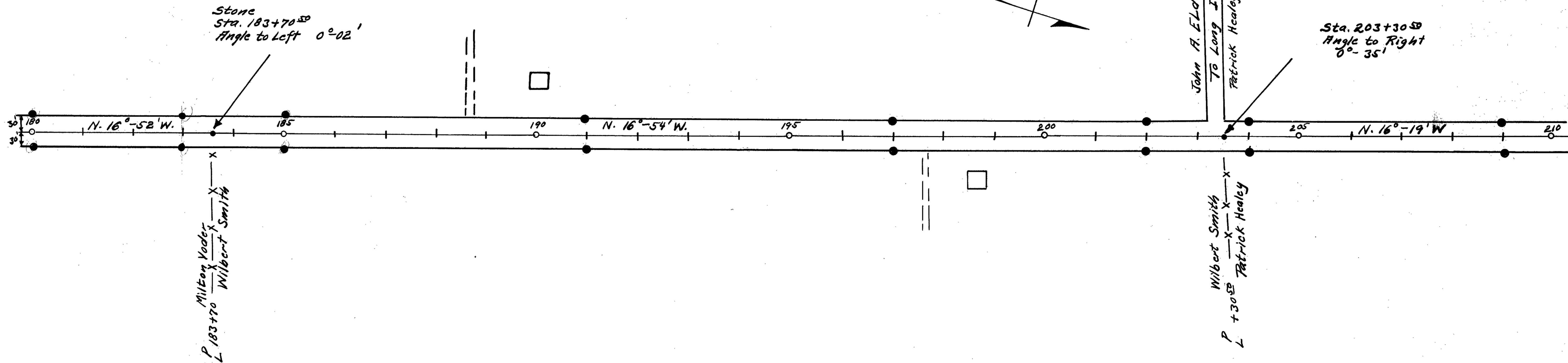
Survey Notes in Logan  
County Surveyors Book  
No. 387



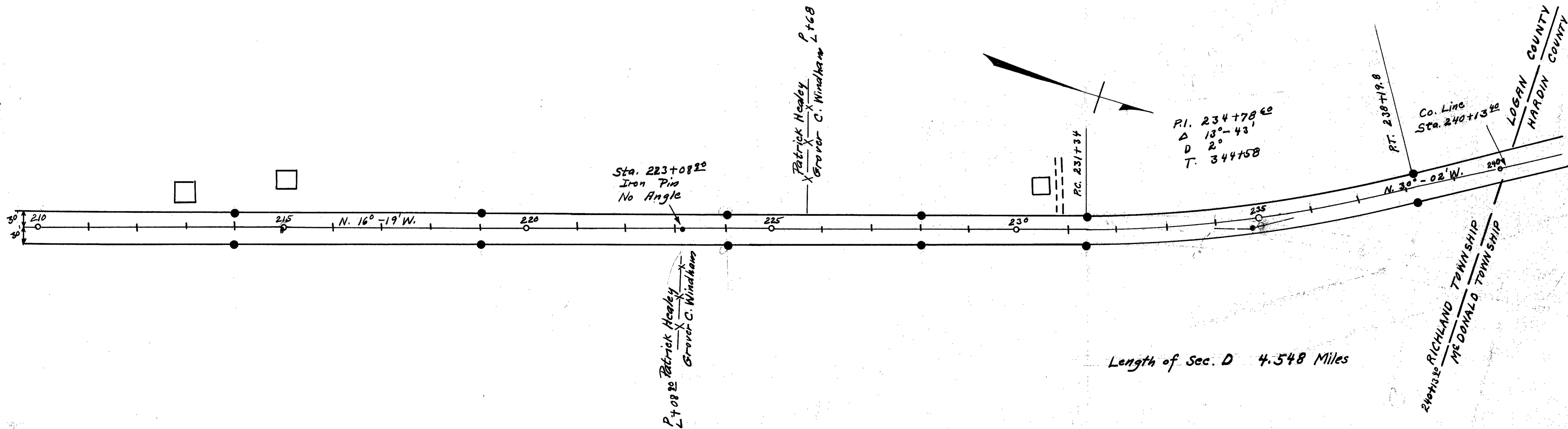
● Indicates R/W. Monuments.

LOGAN COUNTY  
S.H. 130 SEC. D  
R/W PLANS

4  
4



Field Notes in Logan  
County Surveyor's Book  
No. 387

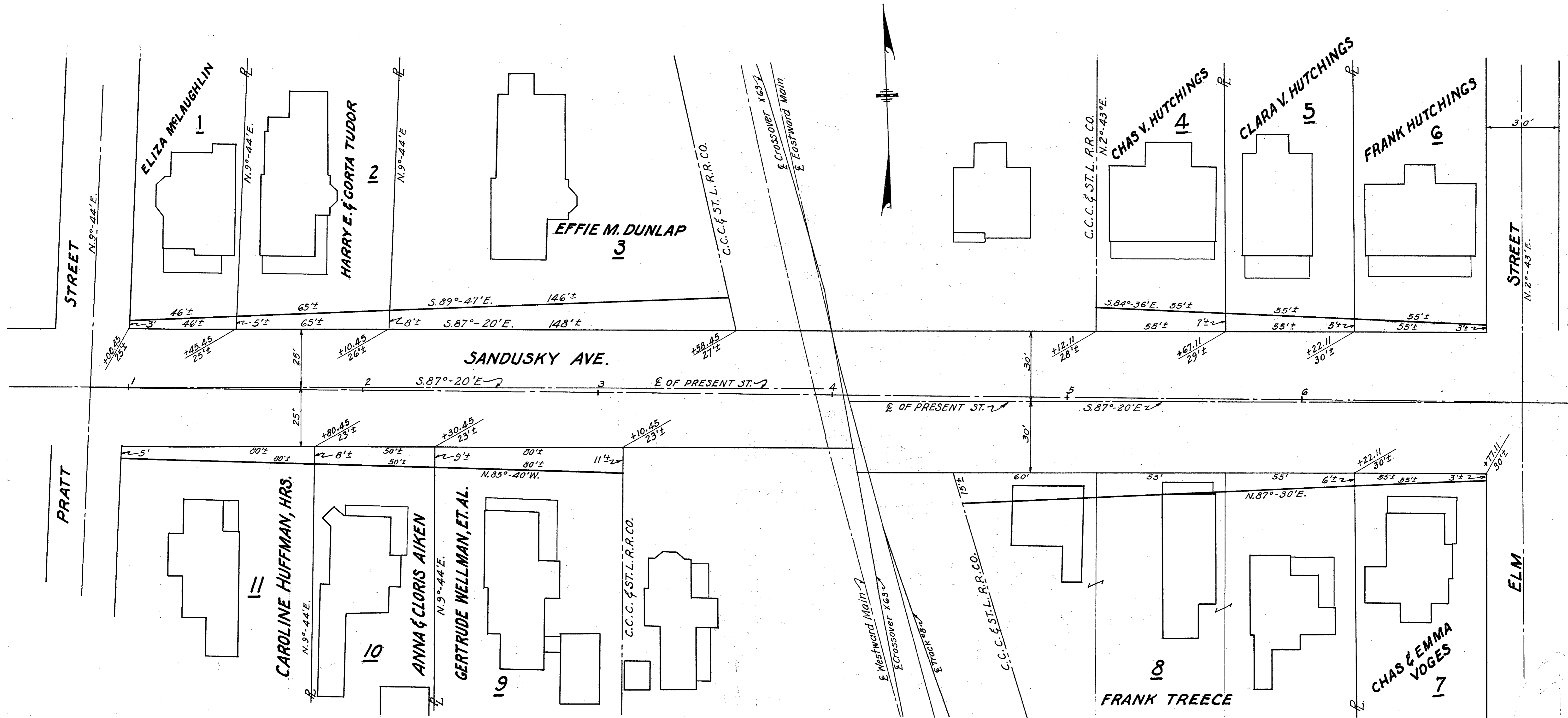


L-21

L-21

SR-33-117

LOGAN COUNTY  
S.H. 130 SEC. SANDUSKY AVE. BR.  
1929



LOGAN COUNTY REC. SANDUSKY AVE. BR.

Re-drawn Jan. 19-1943  
C.R.H.

LOGAN COUNTY  
S.H. 130 SEC. SANDUSKY AVE. BR.