

**NORTH POINT LANDING CONDOMINIUMS**

PHASE I  
0.385 ACRE  
VIRGINIA MILITARY SURVEY 12277  
STOKES TOWNSHIP  
LOGAN COUNTY, OHIO  
PART OF THE  
FOX INVESTMENTS, LTD.  
3.232 ACRE TRACT  
OFFICIAL RECORD 520, PAGE 30

WE DO HEREBY STATE THAT THIS DRAWING OF NORTH POINT LANDING SHOWS ALL BUILDINGS AS CONSTRUCTED.



*Michael W. Bow*  
MICHAEL W. BOW  
PROFESSIONAL ENGINEER 38860  
SEPTEMBER 24, 2002  
THE M & K ENGINEERING CO.  
322 East Main Street  
RUSSELLS POINT, OHIO 43348  
(937) 842-2698

*Jeffrey I. Lee*  
JEFFREY I. LEE  
PROFESSIONAL SURVEYOR 6359  
SEPTEMBER 24, 2002  
LEE SURVEYING & MAPPING CO., INC.  
117 North Madriver Street  
BELLEFONTAINE, OHIO 43311  
(937) 593-7335



APPROVED BY THE L.U.C. PLANNING COMMISSION  
THIS 27 DAY OF MARCH, 2004  
*Constance Hanson*  
DIRECTOR, PLANNING COMMISSION  
PRE-APPROVAL *Jan P. 1st* 3-25-04  
PLAT CHECKED *Jan P. 1st* 4-26-04  
TRANSFERRED THIS 26th DAY OF April, 2004.

*Richard E. Godwin*  
AUDITOR, LOGAN COUNTY, OHIO  
RECORDED IN PLAT CABINET B, SLIDE 88A+B  
RECEIVED FOR RECORD AT 1:52 O'CLOCK P.M.  
THIS 26th DAY OF April, 2004  
*Linda Hanson*  
RECORDER, LOGAN COUNTY, OHIO

2 WORKING DAYS  
BEFORE YOU DIG  
CALL TOLL FREE 800-362-2764  
OHIO UTILITIES PROTECTION SERVICE.

KINGS LANDING ALLOTMENT NO. 9  
PLAT CABINET A, SLIDE 511

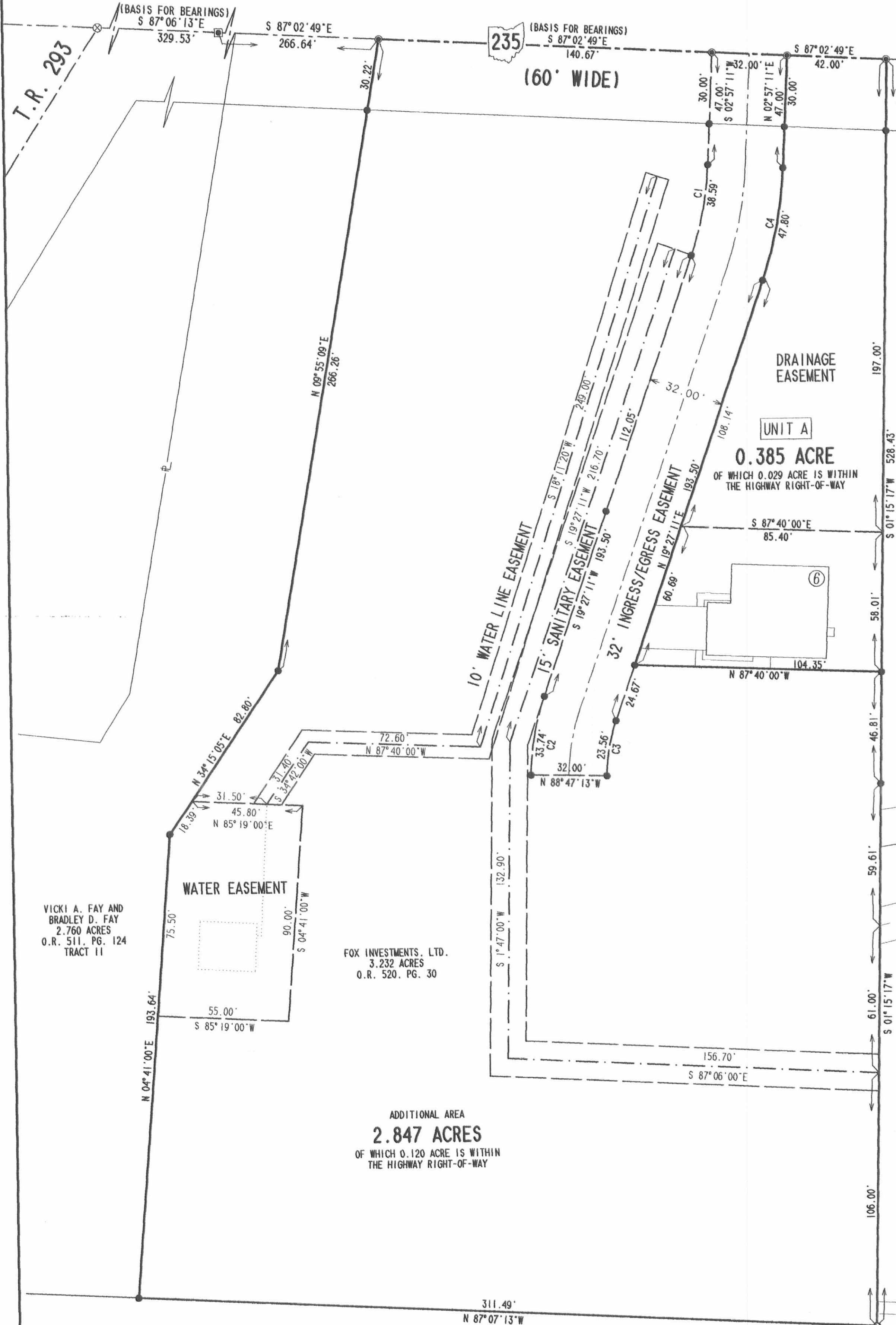
KING AVENUE (50')



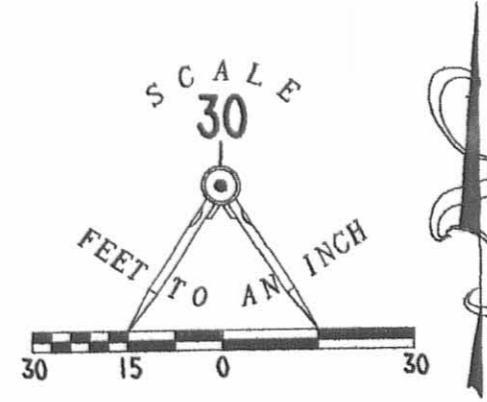
# NORTH POINT LANDING CONDOMINIUMS PHASE I

2  
2

VIRGINIA MILITARY SURVEY 12277 - STOKES TOWNSHIP - LOGAN COUNTY - OHIO  
ALL OF THE FOX INVESTMENTS, LTD 3.232 ACRE TRACT - OFFICIAL RECORD 520, PAGE 30



CURVE	DELTA ANGLE	RADIUS	ARC	TANGENT	CHORD	CHORD BEARING
C 1	16°30'00"	134.00'	38.59'	19.43'	38.46'	S 11°12'11"W
C 2	18°14'24"	106.00'	33.74'	17.02'	33.60'	S 10°19'59"E
C 3	18°14'24"	74.00'	23.56'	11.88'	23.46'	N 10°19'59"E
C 4	16°30'00"	166.00'	47.80'	24.07'	47.64'	N 11°12'11"E



- LEGEND
- 5/8" IRON ROD FOUND
  - 5/8" IRON ROD SET
  - 3/4" SQUARE IRON BAR FOUND
  - 1/2" IRON PIPE FOUND
  - ⊕ HARROW TOOTH FOUND
  - UTILITY POLE
  - MAG NAIL SET
  - ⊗ RAILROAD SPIKE FOUND
  - ⑥ DESIGN NUMBER
  - UNIT NUMBER

NOTE:  
THIS PLAT CONSISTS OF TWO PAGES AND EACH PAGE  
MUST BE PRESENT FOR A COMPLETE REPRESENTATION.

FRANCES D. REED  
1.77 ACRES  
O.R. 313, PG. 227  
PARCEL I

FRANCES D. REED  
ORIG. 1.0 ACRE  
O.R. 313, PG. 227  
PARCEL 11

WANNEMACHER CONSTRUCTION  
9.69 ACRES  
O.R. 253, PG. 711

VICKI A. FAY AND  
BRADLEY D. FAY  
2.760 ACRES  
O.R. 511, PG. 124  
TRACT 11

FOX INVESTMENTS, LTD.  
3.232 ACRES  
O.R. 520, PG. 30

ADDITIONAL AREA  
2.847 ACRES  
OF WHICH 0.120 ACRE IS WITHIN  
THE HIGHWAY RIGHT-OF-WAY

KINGS LANDING ALLOTMENT NO. 9  
PLAT CABINET A, SLIDE 511

NOTE:  
THIS PLAT CONSISTS OF TWO PAGES AND EACH PAGE  
MUST BE PRESENT FOR A COMPLETE REPRESENTATION.

COPYRIGHT 2004 BY:  
LEE SURVEYING & MAPPING CO., INC.  
117 North Madriver Street  
BELLEFONTAINE, OHIO 43311  
(937) 593-7335

D:\M\KSR D412 BFOXCDM4 BFOXTOPD JOB L-3246-1

2 WORKING DAYS  
BEFORE YOU DIG  
CALL TOLL FREE 800-362-2764  
OHIO UTILITIES PROTECTION SERVICE.

J-309