

REAR ELEVATION

EXHIBIT B

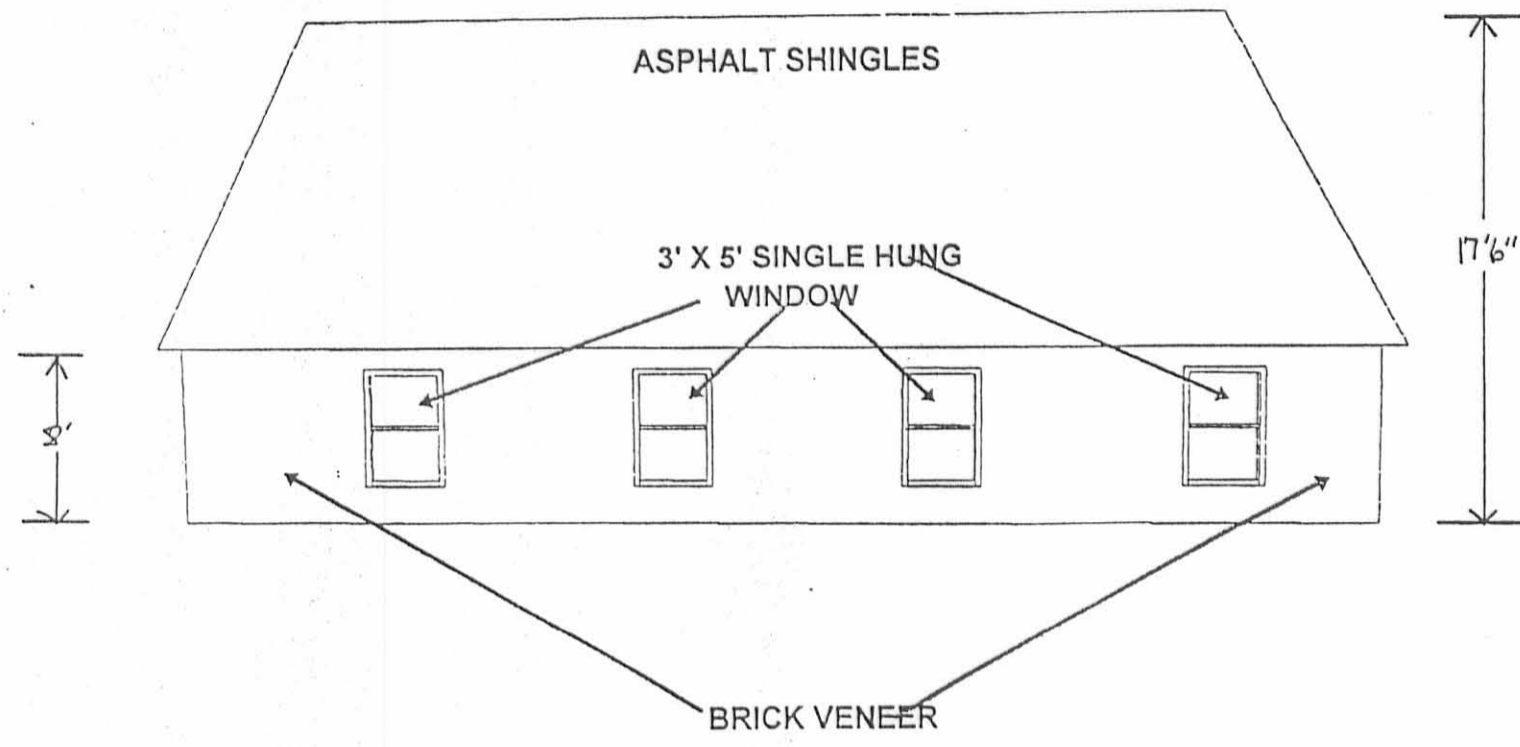
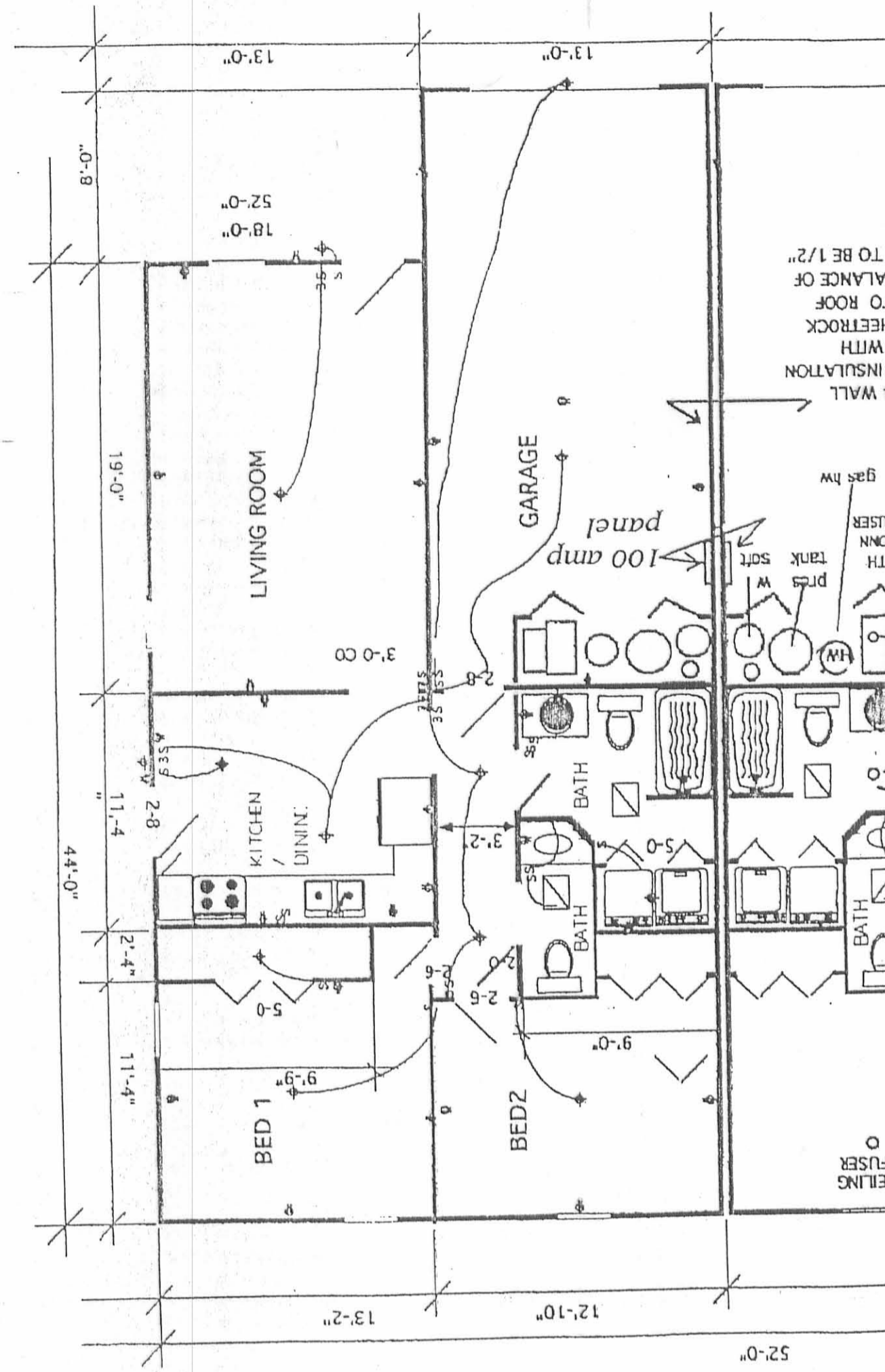


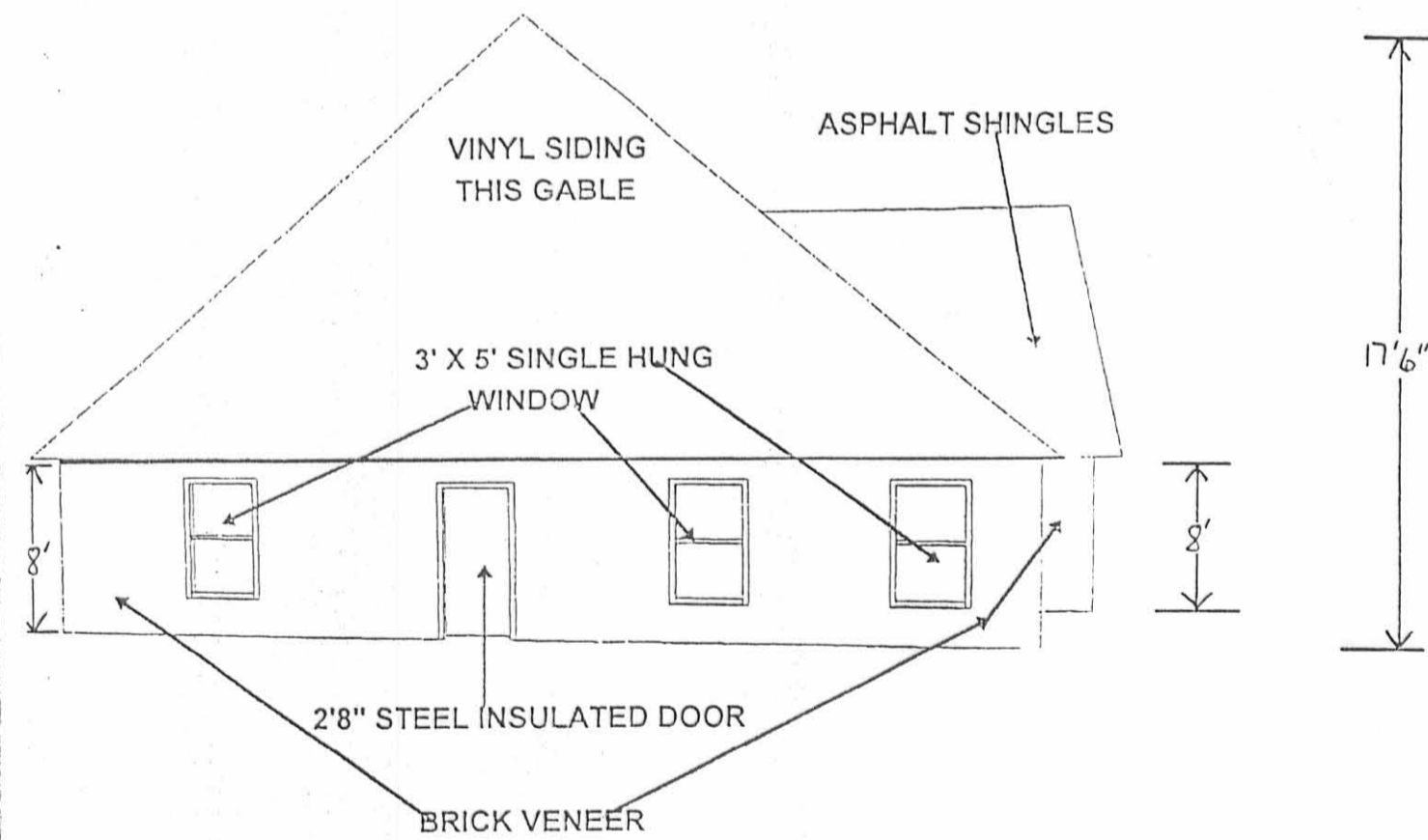
EXHIBIT B

UNITS 8A; 8B
 9A, 9B
 10A, 10B
 11A, 11B
 12A, 12B
 13A, 13B
 14A, 14B
 15A, 15B



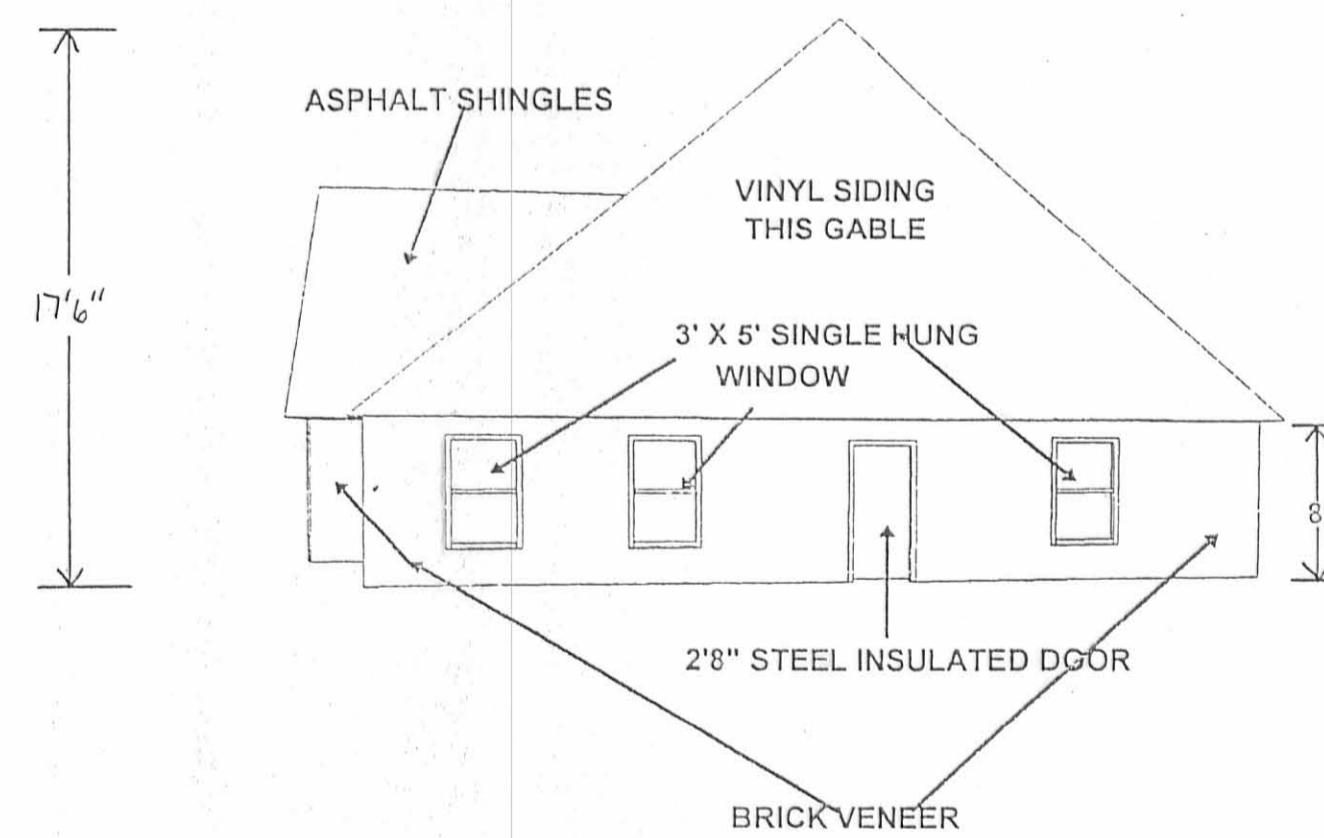
LEFT ELEVATION

EXHIBIT B

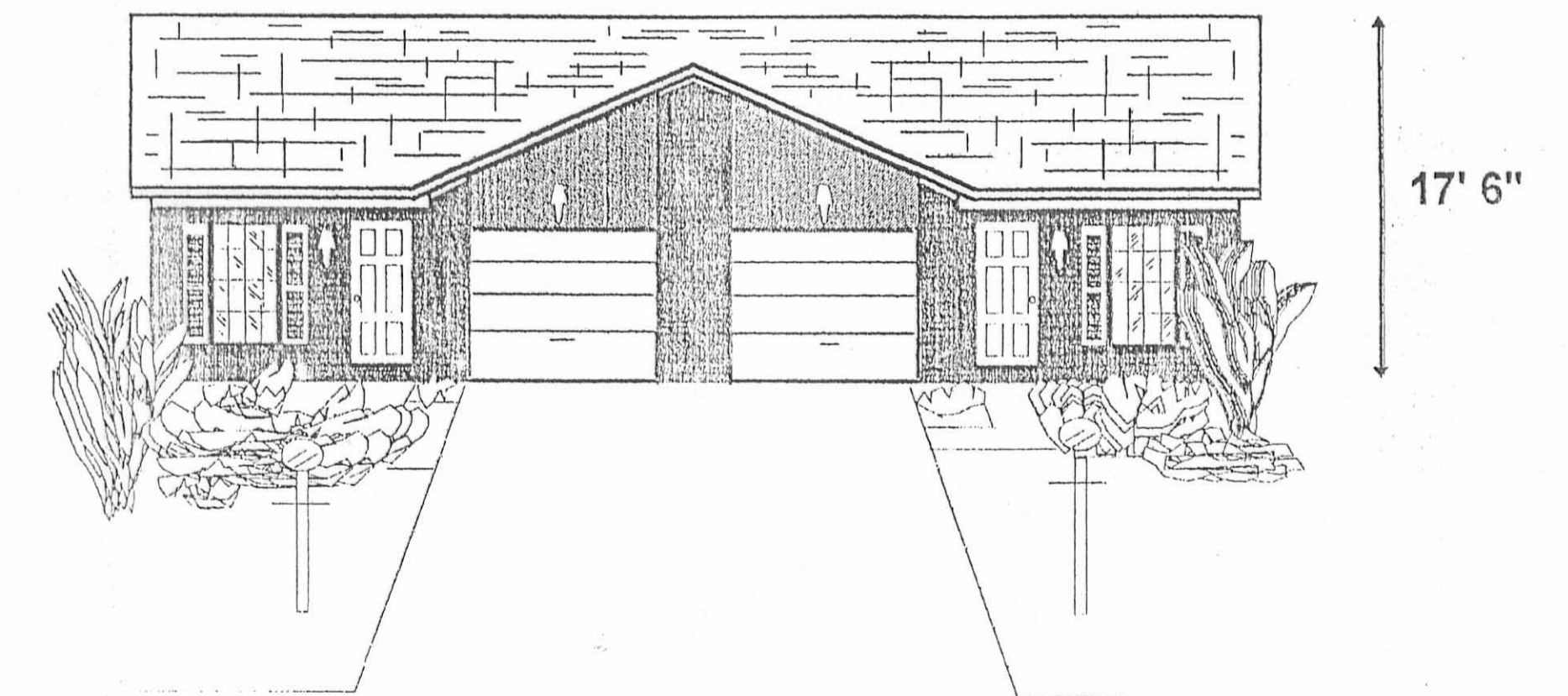


RIGHT ELEVATION

EXHIBIT B



52'



17' 6"

CONDOMINIUM DRAWING FOR
 PHASE II - 2.190 ACRES
INDIAN RIDGE CONDOMINIUMS
 VIRGINIA MILITARY SURVEY 9947
 RICHLAND TOWNSHIP
 LOGAN COUNTY, OHIO

PART OF THE
 JAMES DAVID DUFF AND
 RENEE LORAIN DUFF
 ORIGINAL 54.391 ACRES
 OFFICIAL RECORD 225, PAGE 744