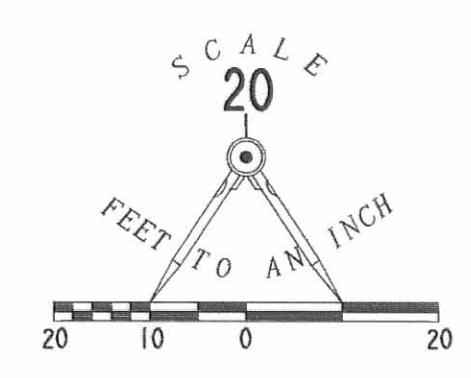
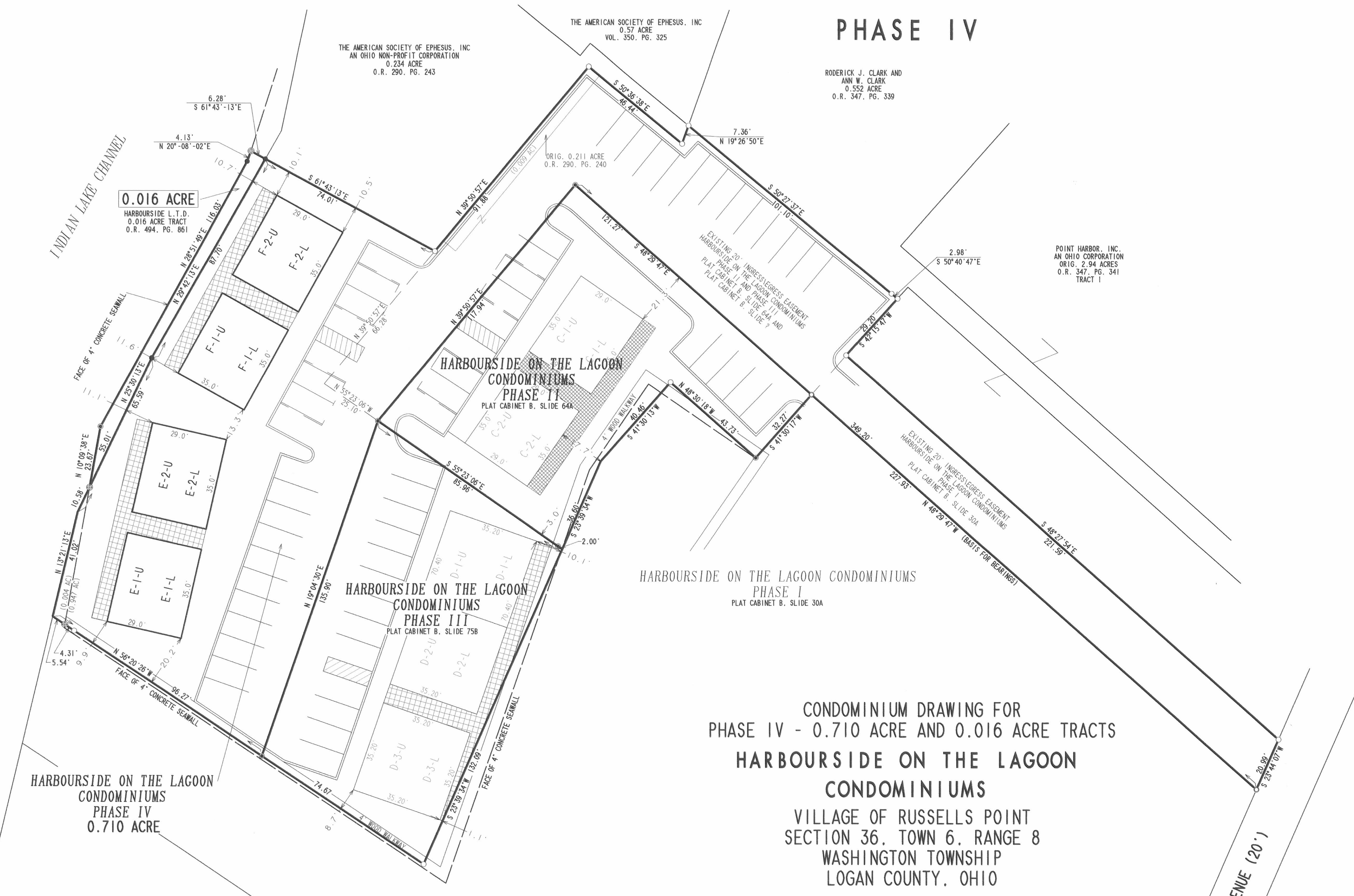


# HARBOURSIDE ON THE LAGOON CONDOMINIUMS

## PHASE IV



- LEGEND**
- 5/8 INCH IRON ROD SET
  - 5/8 INCH IRON ROD FOUND
  - MAG NAIL SET
  - ⊗ CHISELED 'X' IN CONCRETE SET
  - DRILL HOLE IN CONCRETE FOUND
  - ▨ LIMITED COMMON AREA

APPROVED BY THE RUSSELLS POINT PLANNING COMMISSION  
THIS \_\_\_\_\_ DAY OF \_\_\_\_\_, 2003.

CHAIRMAN, RUSSELLS POINT PLANNING COMMISSION

PLAT CHECKED Jon L. Wins 4-2-03  
DESCRIPTION CHECKED Jon L. Wins 4-2-03

TRANSFERRED THIS 3rd DAY OF April, 2003.

Michael E. Godwin  
AUDITOR, LOGAN COUNTY, OHIO  
RECORDED IN PLAT CABINET B, SLIDE 82A-83A  
RECEIVED FOR RECORD AT 11:01 O'CLOCK A.M.  
THIS 3rd DAY OF April, 2003.  
Linda Hanson  
RECORDER, LOGAN COUNTY, OHIO

20030003674

INDIAN LAKE SANITARY SEWER DISTRICT

CONDOMINIUM DRAWING FOR  
PHASE IV - 0.710 ACRE AND 0.016 ACRE TRACTS  
**HARBOURSIDE ON THE LAGOON  
CONDOMINIUMS**  
VILLAGE OF RUSSELLS POINT  
SECTION 36, TOWN 6, RANGE 8  
WASHINGTON TOWNSHIP  
LOGAN COUNTY, OHIO

PART OF THE  
INDIAN LAKE HARBOURSIDE LIMITED PARTNERSHIP  
AN OHIO LIMITED PARTNERSHIP  
ORIGINAL 7.424 ACRES  
OFFICIAL RECORD 23, PAGE 93  
ALL OF THE ORIGINAL 0.211 ACRE  
OFFICIAL RECORD 290, PAGE 240  
AND ALL OF THE ORIGINAL 0.016 ACRE  
OFFICIAL RECORD 494, PAGE 861

WE DO HEREBY STATE THAT THESE DRAWINGS OF HARBOURSIDE ON THE LAGOON CONDOMINIUMS, PHASE IV SHOW ALL BUILDINGS AS CONSTRUCTED.

Michael W. Bow  
MICHAEL W. BOW  
PROFESSIONAL SURVEYOR 38860  
JANUARY 30, 2003

Jeffrey I. Lee  
JEFFREY I. LEE  
PROFESSIONAL SURVEYOR 6359  
JANUARY 30, 2003



**THE M & K ENGINEERING CO.**  
1691 T.R. 31 NORTH  
BELLEFONTAINE, OHIO 43311  
(937) 592-2697

**LEE SURVEYING AND MAPPING CO., INC.**  
117 NORTH MADRIVER STREET  
BELLEFONTAINE, OHIO, 43311  
(937) 593-7335

2 WORKING DAYS  
**BEFORE YOU DIG**  
CALL TOLL FREE **800-362-2764**  
OHIO UTILITIES PROTECTION SERVICE.

COPYRIGHT 2003 BY:  
**LEE SURVEYING & MAPPING CO., INC.**  
117 North Madriver Street  
BELLEFONTAINE, OHIO 43311  
(937) 593-7335  
D-396 HRBRSD4 HRBRSD.DAT L-1134-1

J-294 C



PREPARED BY:

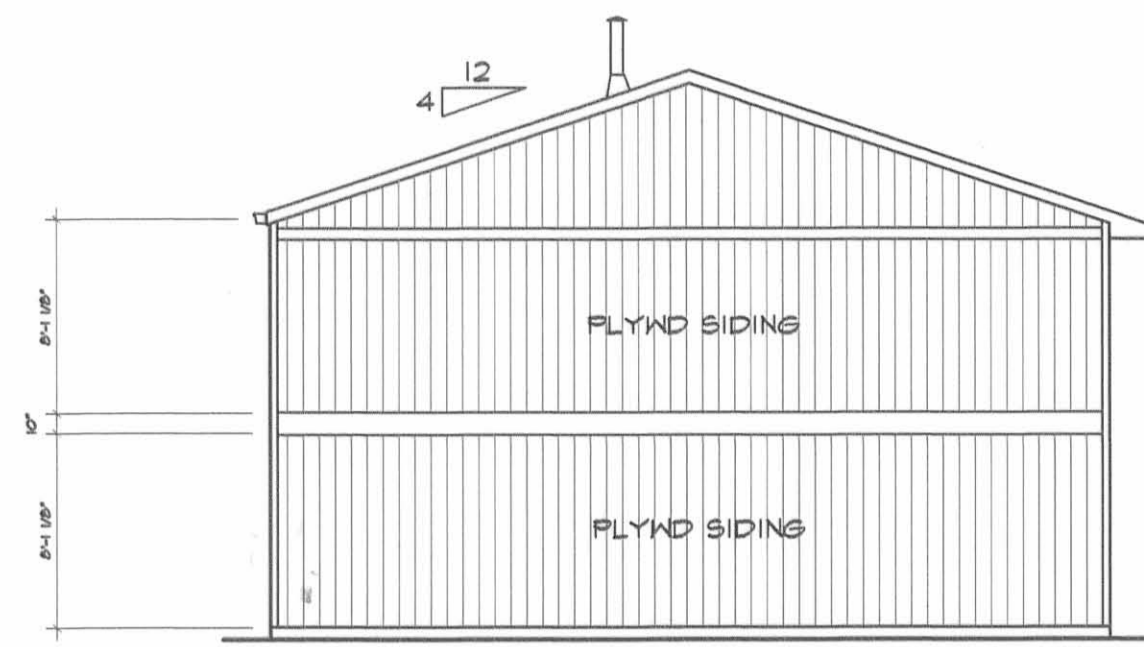
*Michael W. Bow*  
 MICHAEL W. BOW, P.E.  
 THE M&K ENGINEERING CO.

2/18/03  
 DATE



**WATER SIDE ELEVATION FRONT**

SCALE: 1/8" = 1'-0"



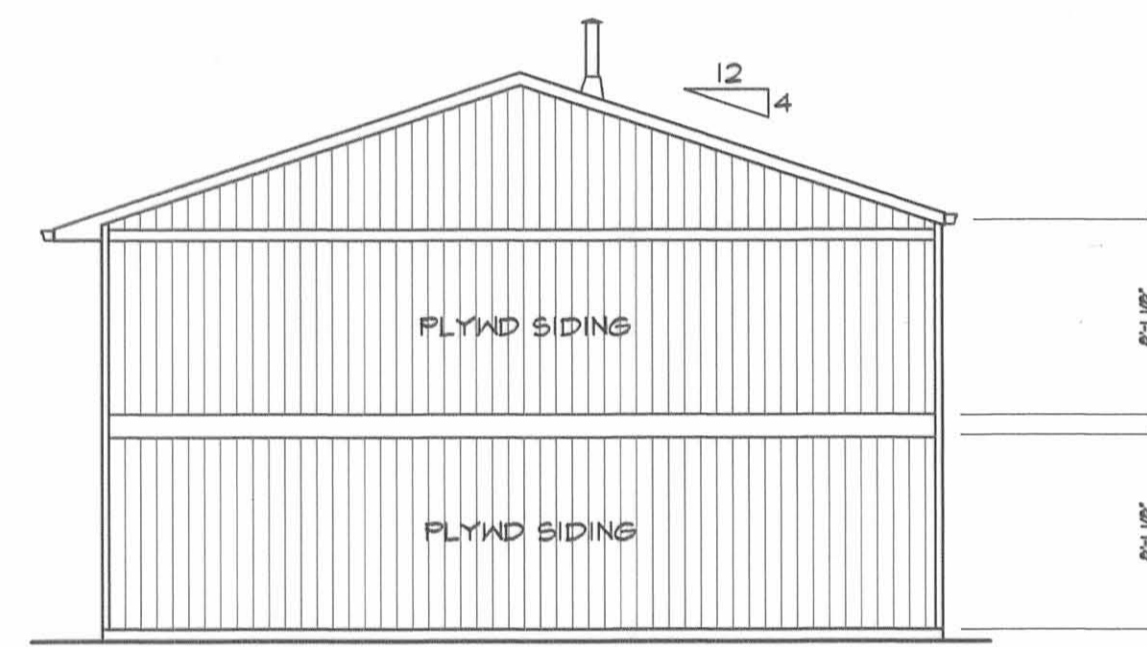
**SIDE ELEV RIGHT**

SCALE: 1/8" = 1'-0"



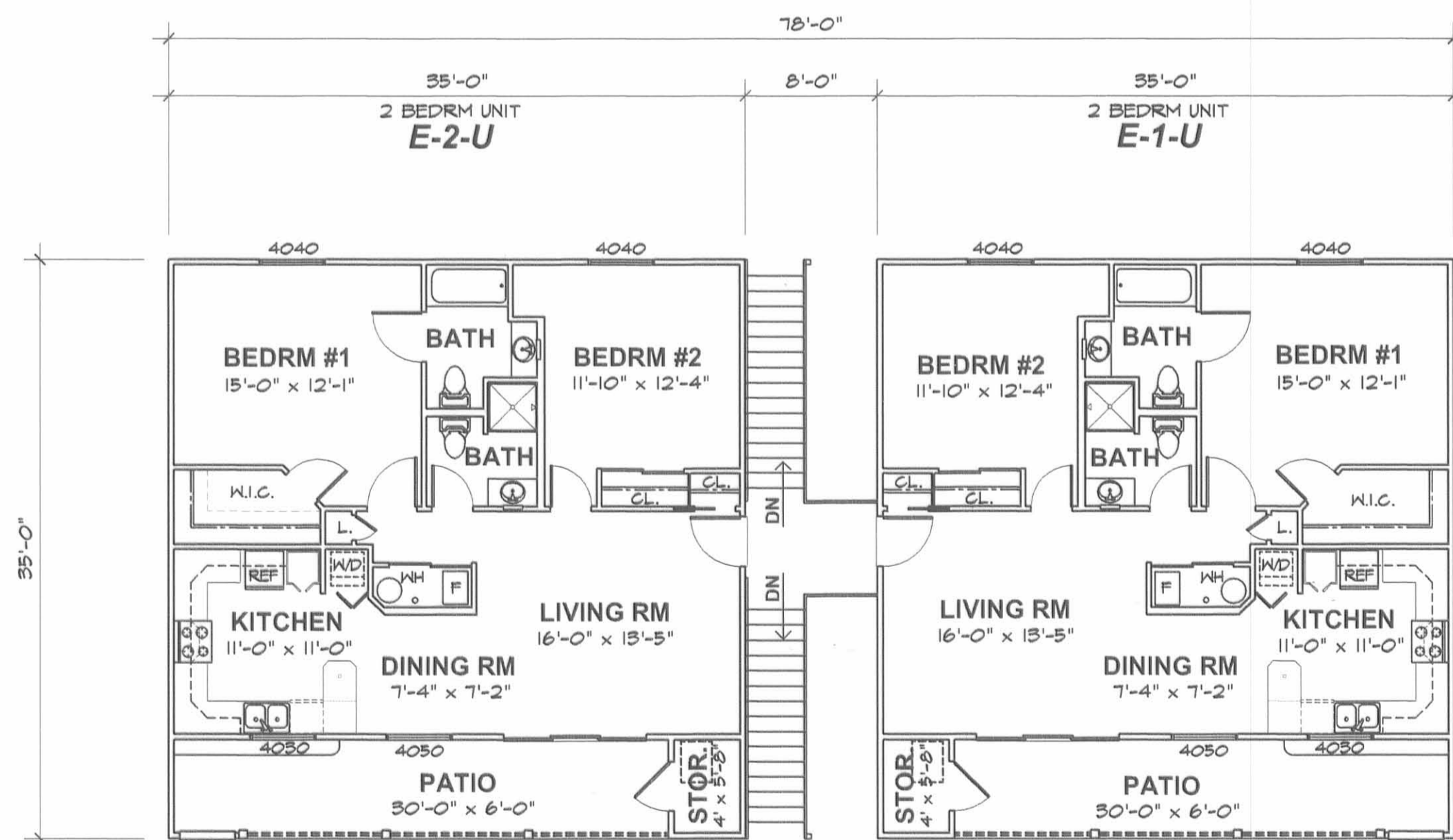
**PARKING SIDE ELEVATION REAR**

SCALE: 1/8" = 1'-0"



**SIDE ELEV LEFT**

SCALE: 1/8" = 1'-0"

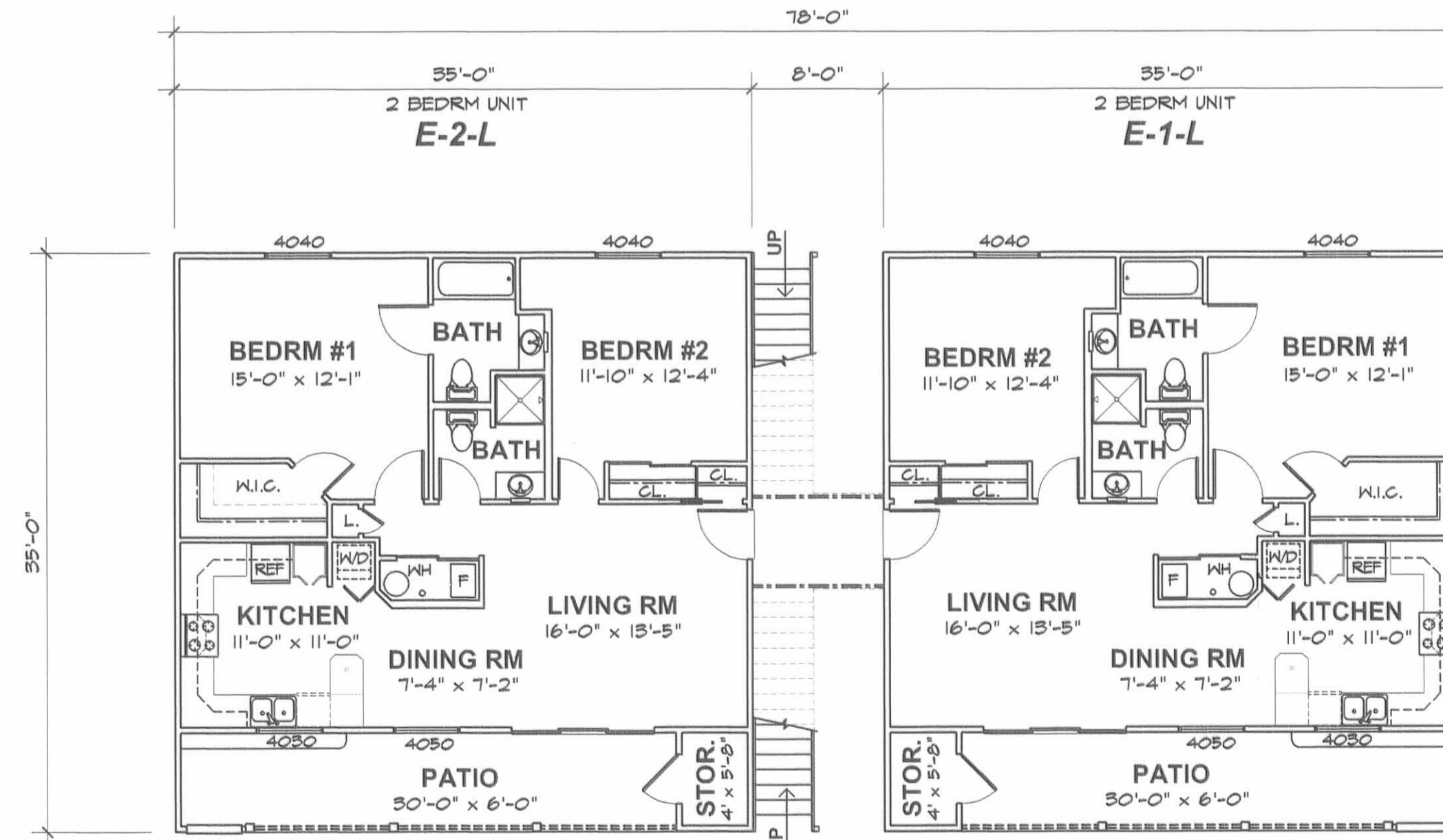


**SECOND FLOOR PLAN**

SCALE: 1/8" = 1'-0"

UNIT DESIGNATION DESCRIPTION:

E-1-U = BUILDING "E"  
 CONDO #1  
 UPPER LEVEL



**FIRST FLOOR PLAN**

SCALE: 1/8" = 1'-0"

UNIT DESIGNATION DESCRIPTION:

E-1-L = BUILDING "E"  
 CONDO #1  
 LOWER LEVEL



PREPARED BY:

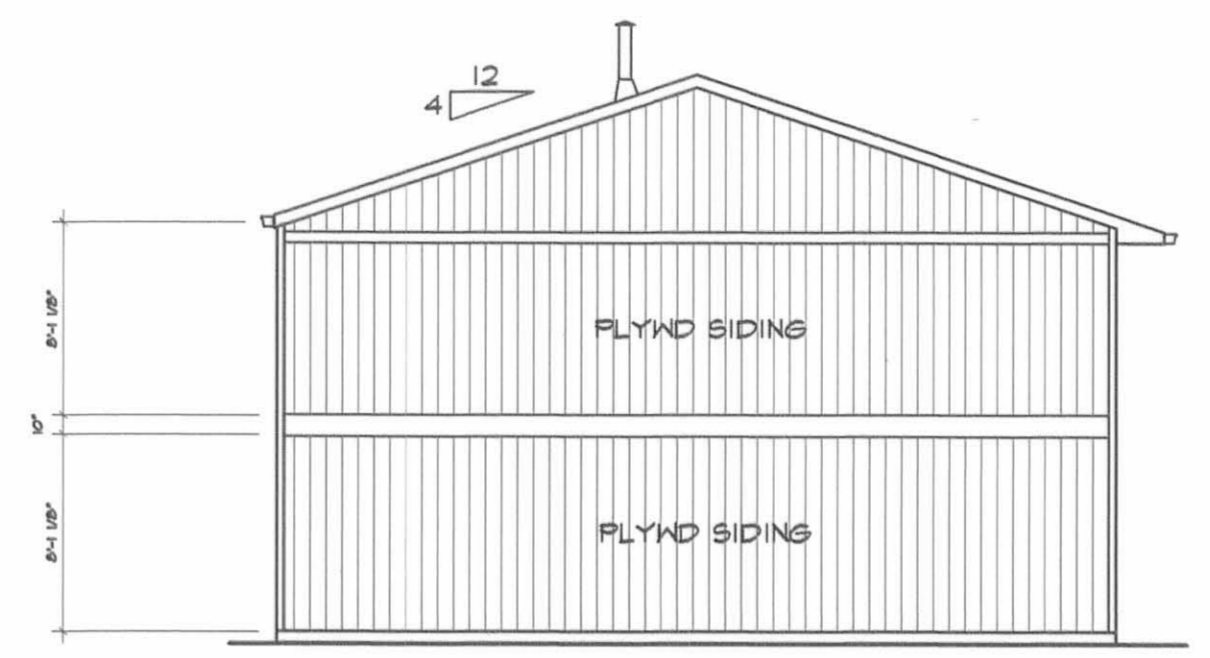
*Michael W. Bow*  
 MICHAEL W. BOW, P.E.  
 THE M&K ENGINEERING CO.

2/18/03  
 DATE



**WATER SIDE ELEVATION FRONT**

SCALE: 1/8" = 1'-0"



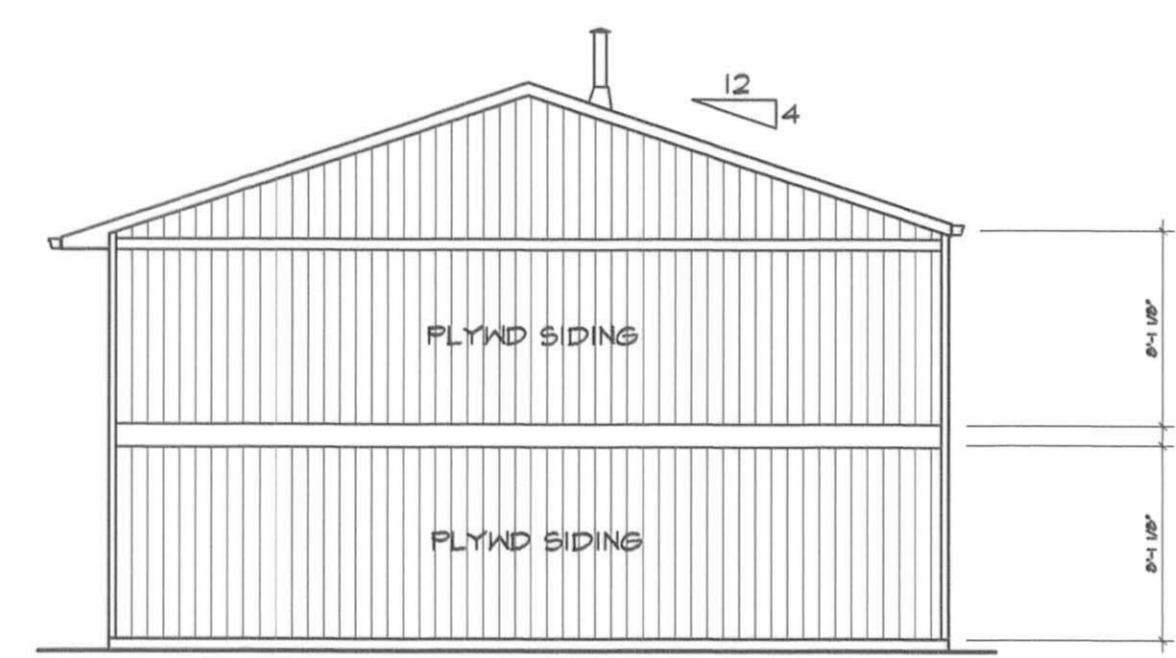
**SIDE ELEV RIGHT**

SCALE: 1/8" = 1'-0"



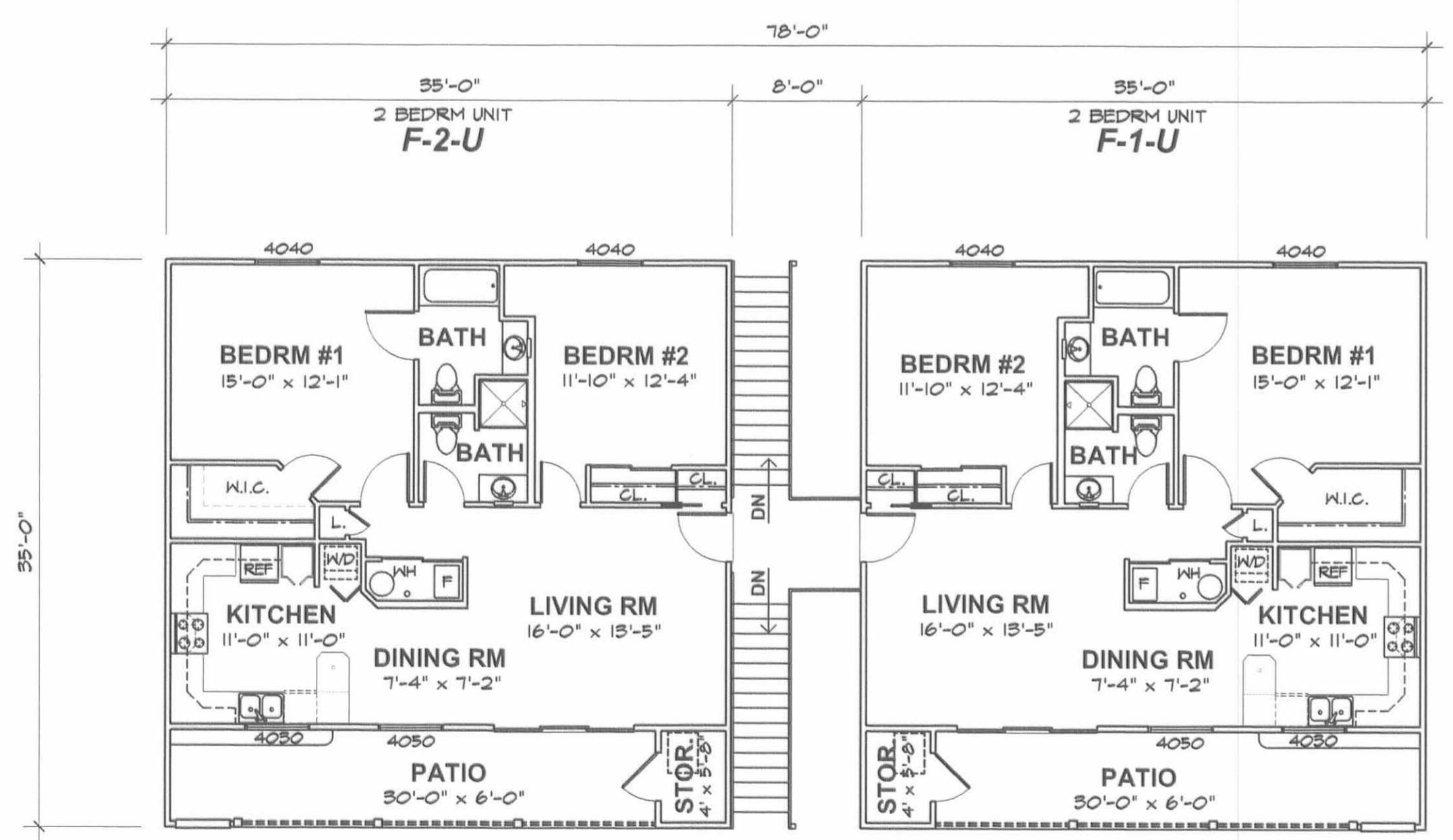
**PARKING SIDE ELEVATION REAR**

SCALE: 1/8" = 1'-0"



**SIDE ELEV LEFT**

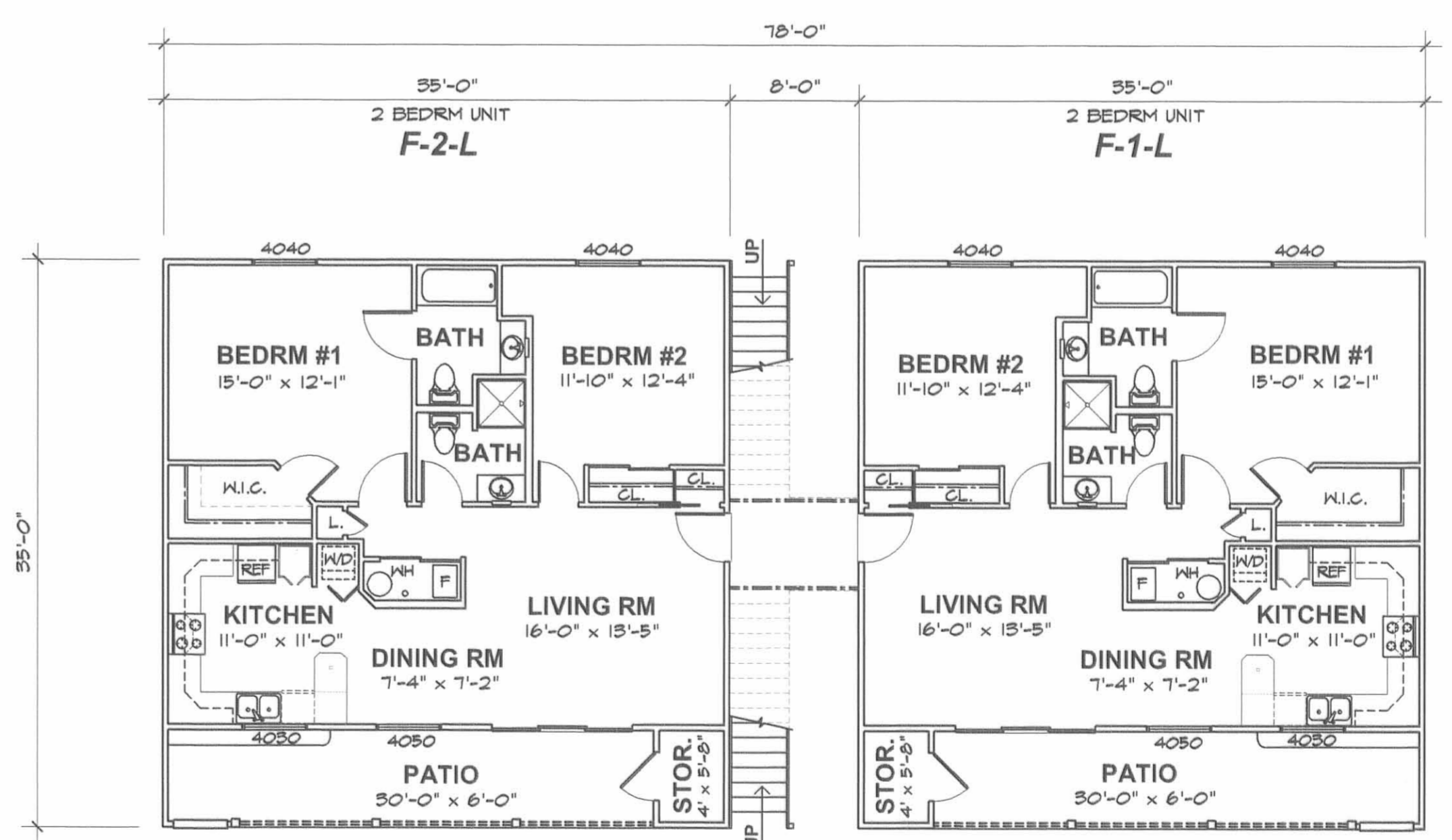
SCALE: 1/8" = 1'-0"



**SECOND FLOOR PLAN**

SCALE: 1/8" = 1'-0"

UNIT DESIGNATION DESCRIPTION:  
 F-1-U = BUILDING "F"  
 CONDO #1  
 UPPER LEVEL



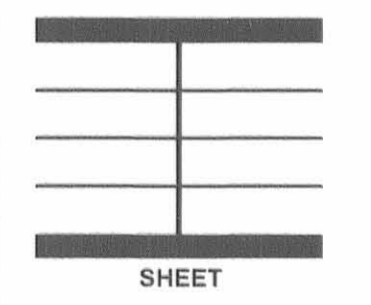
**FIRST FLOOR PLAN**

SCALE: 1/8" = 1'-0"

UNIT DESIGNATION DESCRIPTION:  
 F-1-L = BUILDING "F"  
 CONDO #1  
 LOWER LEVEL

THE **M & K ENGINEERING CO.**  
 322 East Main St. P. O. Box 1457  
 Russells Point, Ohio 43348  
 TEL: 937.842.2698 FAX: 937.842.2697

**NEW BUILDING "F" FOR:**  
**HARBOURSIDE ON THE LAGOON**  
**RUSSELLS POINT, OHIO**



SHEET

**3**

3 OF 3

J-294C