

DESCRIPTION

LYING IN SECTION 28, TOWN 5, RANGE 13, LIBERTY TOWNSHIP, LOGAN COUNTY, OHIO.

BEING ALL OF THE REMAINDER OF THE FOLLOWING EIGHT TRACTS WITH ALL DEED REFERENCED TO THE LOGAN COUNTY RECORDS OF DEEDS: WEST LIBERTY HOMES, INC. 4.30 ACRE TRACT, DEED VOLUME 384, PAGE 920, TRACT I; WEST LIBERTY HOMES, INC. 4.06 ACRE TRACT, DEED VOLUME 356, PAGE 30; WEST LIBERTY HOMES, INC. 2.36 ACRE TRACT, DEED VOLUME 384, PAGE 920, TRACT II; WEST LIBERTY HOMES, INC. 0.08 ACRE TRACT, DEED VOLUME 391, PAGE 864, TRACT I; WEST LIBERTY GARDEN APARTMENTS, INC. 6.20 ACRE TRACT, OFFICIAL RECORD 26, PAGE 106; WEST LIBERTY GARDENS APTS., INC. 4.08 ACRE TRACT, VOLUME 391, PAGE 867; WEST LIBERTY CARE CENTER, INC. ORIGINAL 19.70 ACRE TRACT, DEED VOLUME 352, PAGE 613; AND WEST LIBERTY CARE CENTER, INC. ORIGINAL 12.32 ACRE TRACT, DEED VOLUME 352, PAGE 474. THE COMBINED AREA OF THE ABOVE BEING MORE PARTICULARLY DESCRIBED FOR ANNEXATION PURPOSES AS FOLLOWS:

BEGINNING AT A POINT AT THE SOUTHWEST CORNER OF THE ROBERT RICHARD KING 6.40 ACRE TRACT (VOL. 356, PG. 19), THE CENTER-LINE OF U.S. ROUTE 68, AND ON AN EXISTING EAST CORPORATION LINE OF THE VILLAGE OF WEST LIBERTY, OHIO.

THENCE, WITH THE LINES OF THE SAID 6.40 ACRE TRACT THE FOLLOWING TWO COURSES:
 S 82°-37' E. A DISTANCE OF 796.72 FEET TO A POINT AT THE SOUTHEAST CORNER OF THE SAID 6.40 ACRE TRACT.
 N 3°-58' E. A DISTANCE OF 325.0 FEET TO A POINT.

THENCE, WITH THE SOUTH LINE OF THE ROBERTA MAE GRABER 32.291 ACRE TRACT (O.R. 56, PG. 181, TR. 3, 4, AND 5) THE FOLLOWING TWO COURSES:
 S 81°-43' E. A DISTANCE OF 450.12 FEET TO A POINT
 S 82°-58' E. A DISTANCE OF 929.28 FEET TO A POINT ON THE CENTER-LINE OF COUNTY HIGHWAY 5.

THENCE, WITH THE CENTER-LINE OF COUNTY HIGHWAY 5, S 13°-24' W. A DISTANCE OF 60.3 FEET TO A POINT.

THENCE, WITH THE LINES OF THE VERNON C. YODER 6.02 ACRE TRACT (VOL. 394, PG. 749) THE FOLLOWING TWO COURSES:
 N 82°-58' W. A DISTANCE OF 430.0 FEET TO A POINT.
 S 4°-25' W. A DISTANCE OF 1073.0 FEET TO A POINT.

THENCE, WITH THE LINES OF THE VIVIAN C. DODGE 13.66 ACRE TRACT (VOL. 395, PG. 751) THE FOLLOWING TWO COURSES:
 N 89°-54' W. A DISTANCE OF 927.50 FEET TO A POINT.
 S 3°-58' W. A DISTANCE OF 255.13 FEET TO A POINT.

THENCE, WITH THE CENTER-LINE OF U.S. ROUTE 68, N 44°-58'-30" W. A DISTANCE OF 65.69 FEET TO A POINT AT T.S. STATION 88+91.69.

THENCE, WITH THE CENTER-LINE OF U.S. ROUTE 68 ON A SPIRAL HAVING A DEGREE OF CURVATURE OF 3°-00'-00" TO THE RIGHT, A LENGTH OF 300.00 FEET, AND HAVING A CHORD BEARING N 43°-28'-31" W. A DISTANCE OF 299.92 FEET TO A POINT AT S.C. STATION 91+91.69.

THENCE, WITH THE CENTER-LINE OF U.S. ROUTE 68 ON A CURVE TO THE RIGHT HAVING A CENTRAL ANGLE OF 22°-58'-35", A RADIUS OF 1910.08 FEET AND A CHORD BEARING N 28°-59'-15" W. A DISTANCE OF 760.83 FEET TO A POINT AT C.S. STATION 99+57.52.

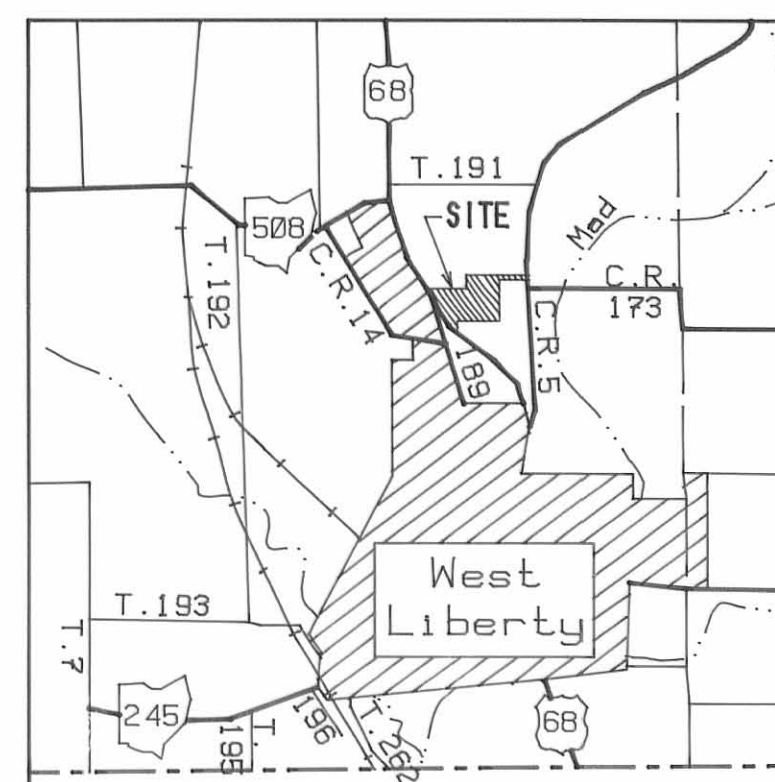
THENCE, WITH THE CENTER-LINE OF U.S. ROUTE 68 ON A SPIRAL HAVING A DEGREE OF CURVATURE OF 3°-00'-00" TO THE RIGHT, A LENGTH OF 300.00 FEET, AND HAVING A CHORD BEARING N 14°-29'-59" W. A DISTANCE OF 299.92 FEET TO A POINT AT S.T. STATION 102+57.52.

THENCE, WITH THE CENTER-LINE OF U.S. ROUTE 68 AND AN EXISTING CORPORATION LINE OF THE VILLAGE OF WEST LIBERTY, N 13°-00' W. A DISTANCE OF 66.6 FEET TO THE POINT OF BEGINNING.

CONTAINING 39.82 DEED ACRES.

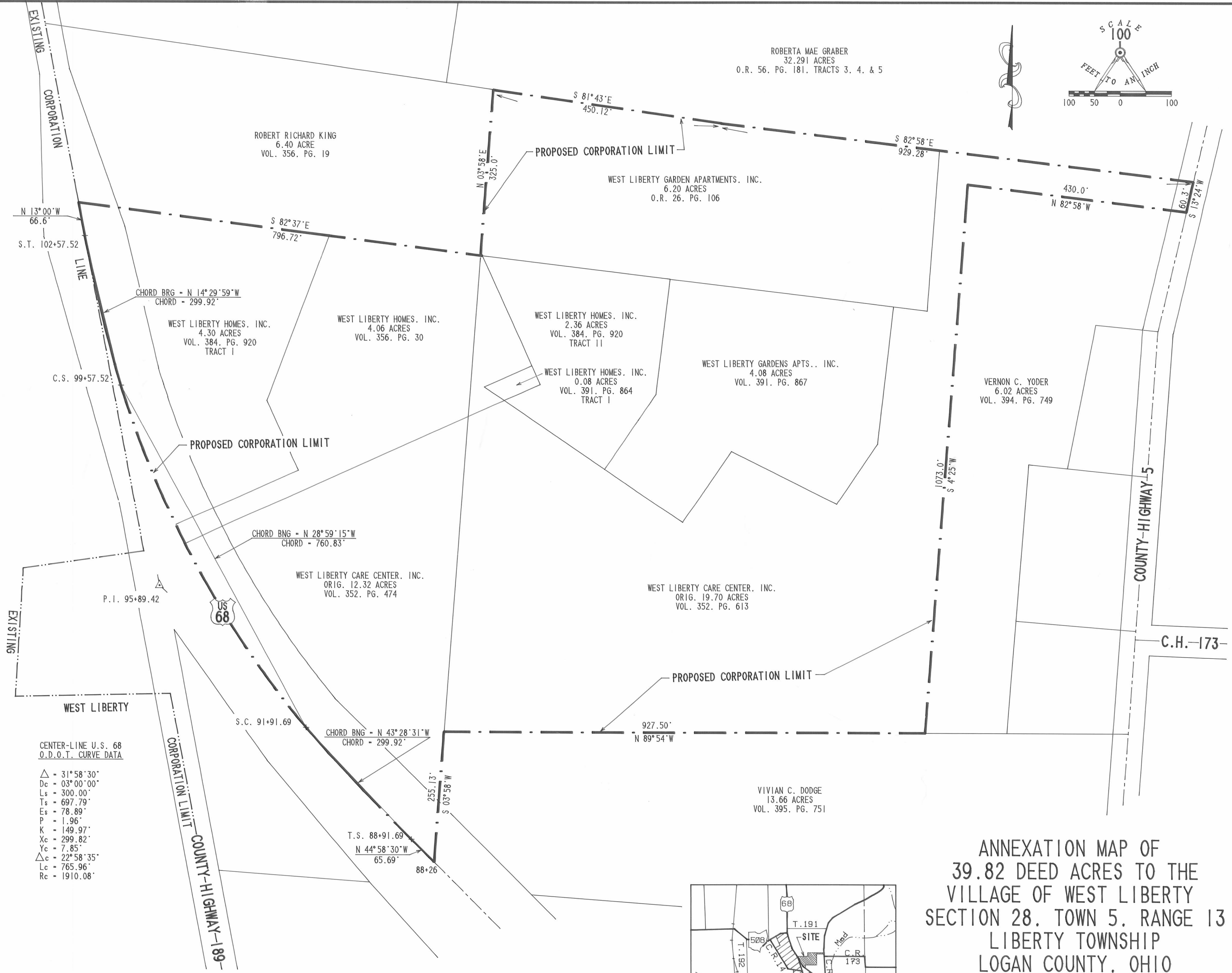
LOGAN COUNTY COMMISSIONERS	<u>John A. Jeffery</u> <u>Donald E. Leavin</u>	<u>12-29-94</u> DATE <u>12-29-94</u> DATE
LOGAN COUNTY ENGINEER	<u>George W. Clayton</u>	<u>12-29-94</u> DATE <u>1-9-95</u> DATE
CHAIRMAN, TOWNSHIP TRUSTEES	<u>James K. Cox</u>	<u>12-21-95</u> DATE
L.U.C. PLANNING DIRECTOR	<u>Carman Scott</u>	<u>12-21-95</u> DATE
MAYOR OF WEST LIBERTY	<u>Richard L. Zerk</u>	<u>12-21-95</u> DATE
PRESIDENT, VILLAGE COUNCIL	<u>Steve M. Pullough</u>	<u>12-20-95</u> DATE
PLAT PRE-APPROVED	<u>Jon C. Hines</u>	<u>7-6-94</u> DATE
PLAT CHECKED	<u>Jon C. Hines</u>	<u>12-22-95</u> DATE
VILLAGE ORDINANCE NUMBER	<u>423</u>	
TRANSFERRED THIS	<u>26th</u> DAY OF <u>December</u> , 19 <u>95</u>	
LOGAN COUNTY AUDITOR	<u>Michael E. Godwin</u>	
RECEIVED FOR RECORD AT	<u>9:57:01</u> O'CLOCK <u>A.</u> M. <u>9508951</u>	
THIS	<u>26th</u> DAY OF <u>December</u> , 19 <u>95</u>	
LOGAN COUNTY RECORDER	<u>Carolyn Collins</u>	
RECORDED IN PLAT CABINET	<u>B</u> SLIDE <u>4A</u>	

ANNEXATION MAP OF
 39.82 DEED ACRES TO THE
 VILLAGE OF WEST LIBERTY
 SECTION 28, TOWN 5, RANGE 13
 LIBERTY TOWNSHIP
 LOGAN COUNTY, OHIO



LEE SURVEYING & MAPPING CO.
 143 East Columbus Avenue
 BELLEFONTAINE, OHIO 43311
 (513) 593-7335

D 240 GHANNEX L-1456-1



CENTER-LINE U.S. 68
 O.D.O.T. CURVE DATA
 Δ = 31° 58' 30"
 Δc = 03° 00' 00"
 Ls = 300.00'
 Ts = 697.79'
 Es = 78.89'
 P = 1.96'
 K = 149.97'
 Xc = 299.82'
 Yc = 7.85'
 Δc = 22° 58' 35"
 Lc = 765.96'
 Rc = 1910.08'

SURVEYOR'S AFFIDAVIT

THE ABOVE ANNEXATION MAP HAS BEEN PREPARED FROM RECORDS BY LEE SURVEYING AND MAPPING COMPANY.

BEARINGS ARE BASED UPON THE CENTER-LINE OF U.S. ROUTE 68, BEING N 13° 00' 00" W, AND ALL OTHER BEARINGS ARE FROM DEED RECORDS.

Jeffrey I. Lee
 JEFFREY I. LEE
 PROFESSIONAL SURVEYOR 6359

