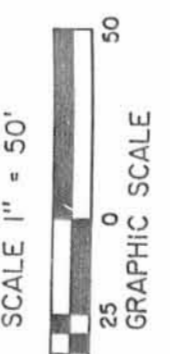
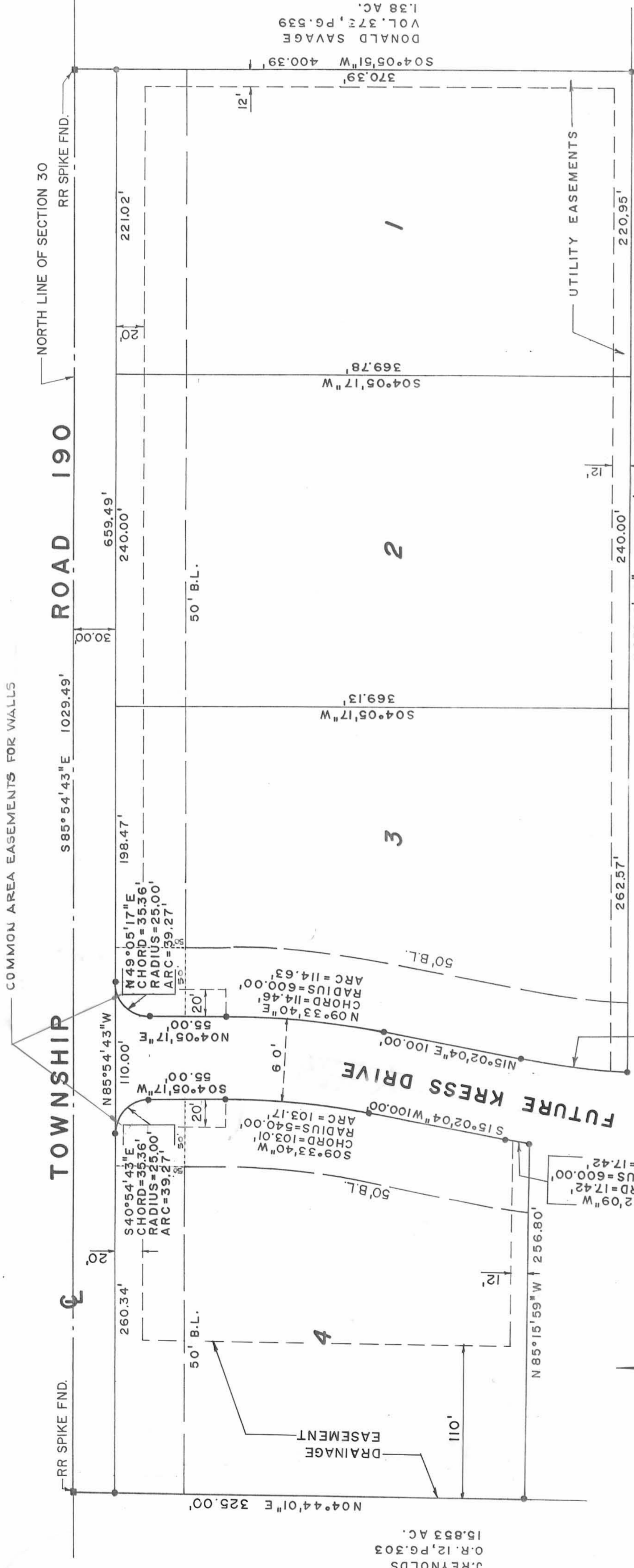


# TRACEMORE ESTATES NO. 1

BEING A PART OF THE NORTHWEST QUARTER OF SECTION 30, T-5, R-13, LIBERTY TWP., LOGAN COUNTY, OHIO



### SURVEYOR'S CERTIFICATE

PAUL T. HUMBLE  
O.R. 84, PG. 949  
4.4.57 AC.

SEC.25  
SEC.30

The accompanying plat represents a subdivision of land in Section 30, T-5, R-13, Between The Miami Rivers Survey, Liberty Township, Logan County, Ohio.

The tract has an area of 0.709 acres in streets and 7.308 acres in lots making a total of 8.517 acres.

All measurements are in feet and decimals of a foot. All measurements on curves are Arc distances.

I hereby certify that the accompanying plat is a correct representation of Tracemore Estates No. 1 as surveyed and that all monuments and iron pins as shown hereon have been set or will be set as part of work that surety if posted for.

Concrete monuments are set at points shown thus: ●  
5/8 iron bars are set at all lot corners.

### METES AND BOUNDS DESCRIPTION

Commencing at a 5/8" iron bar found at the intersection of the centerlines of Township Road 190 and U.S. Route 68.

THENCE easterly a distance of 715.97 feet along the said centerline of Township Road 190 to a railroad spike found being the northeast corner of the J. Reynolds 15.853 acre tract (O.R. 12, Page 303), said railroad spike being the true point of beginning for this description;

THENCE S. 85° 54' 43" E, a distance of 1029.49 feet along the said centerline of Township Road 190 (also the north line of Section 30) to a railroad spike found being the northwest corner of the Donald Savage 1.38 acre tract (Volume 373, Page 539);

THENCE S. 04° 05' 51" W, a distance of 400.39 feet along the west line of the said Donald Savage tract to a concrete monument set at a railroad spike found at 0.39 feet and a concrete monument set at 30.00 feet;

THENCE N. 85° 45' 20" W, a distance of 723.52 feet to a concrete monument set at the beginning of a curve to the right;

THENCE with said curve to the right, having a radius of 540.00 feet, an arc length of 76.91 feet, a central angle of 08° 09' 38", a chord of 76.85 feet and a chord bearing of N. 10° 57' 15" E, to a concrete monument set;

THENCE N. 15° 02' 04" E, a distance of 100.00 feet to a concrete monument set at the beginning of a curve to the left.

THENCE with said curve to the left, having a radius of 600.00 feet, an arc length of 114.63 feet, a central angle of 10° 56' 47", a chord of 114.46 feet and a chord bearing of N. 09° 33' 40" E, to a concrete monument set;

THENCE N. 04° 05' 17" E, a distance of 55.00 feet to a concrete monument set at the beginning of a curve to the right;

THENCE with said curve to the right, having a radius of 25.00 feet, an arc length of 39.27 feet, a central angle of 90° 00' 00", a chord of 35.36 feet, and a chord bearing of N. 49° 05' 17" E, to a concrete monument set;

THENCE N. 85° 54' 43" W, a distance of 110.00 feet to a concrete monument set at the beginning of a curve to the right;

THENCE with said curve to the right, having a radius of 25.00 feet, an arc length of 39.27 feet, a central angle of 90° 00' 00" a chord of 35.36 feet, and a chord bearing of S. 40° 54' 43" E, to a concrete monument set;

THENCE S. 04° 05' 17" W, a distance of 55.00 feet to a concrete monument set at the beginning of a curve to the right;

THENCE with said curve to the right, having a radius of 540.00 feet, an arc length of 103.17 feet, a central angle of 10° 56' 47", a chord of 103.01 feet, a chord bearing of S. 09° 33' 40" W, to a concrete monument set;

THENCE S. 15° 02' 04" W, a distance of 100.00 feet to a concrete monument set at the beginning of a curve to the left;

THENCE with said curve to the left, having a radius of 600.00 feet, an arc length of 17.42 feet, a central angle of 01° 39' 50", a chord of 17.42 feet, and a chord bearing of S. 14° 12' 09" W, to a concrete monument set;

THENCE N. 85° 15' 59" W, a distance of 256.80 feet to a concrete monument set on the east line of the said J. Reynolds 15.853 acre tract;

THENCE N. 04° 44' 01" E, a distance of 295.00 feet along the east line of the said J. Reynolds tract to the point of beginning, passing a concrete monument set at 265.00 feet;

Containing 8.517 acres more or less.

Basis for bearings: Centerline of Township Road 190 (S. 85° 54' 43" E.).

SUBDIVIDER OF PLAT: P. Terrance Humble, Etal.  
501 West Baird  
West Liberty, Ohio 43357



Leslie H. Geeslin  
5-25-90  
Date

Leslie H. Geeslin  
130 S. Sandusky Street  
Rushsylvania, Ohio 43347

### DEDICATION

KNOW ALL MEN BY THESE PRESENTS that Paul T. Humble and Lois J. Humble proprietors of the land indicated on the accompanying plat has authorized the platting thereof and do hereby dedicate the streets to the Public use forever.

Paul T. Humble  
Lois J. Humble

STATE OF OHIO  
COUNTY OF LOGAN

Before me a Notary Public in and for said County personally came Paul T. Humble and Lois J. Humble who acknowledged the signing of the foregoing instrument to be their voluntary act and deed for the uses and purposes therein expressed.

IN WITNESS WHEREOF, I have hereunto set my hand and affixed my official seal this 24th day of May, 1990.

By: Judith L. Shore  
Notary Public  
Marilyn L. Clark  
My Commission Expires June 30, 1991

PLAT PRE-APPROVAL  
Description checked JCH 5-25-90  
Date June 13 6-7-90

The within streets and easements are hereby approved and accepted for public maintenance by resolution no. \_\_\_\_\_ recorded in Logan County Commissioners Journal \_\_\_\_\_ on this the \_\_\_\_\_ day of \_\_\_\_\_, 1990.

APPROVALS

Reviewed this 4th day of June 1990  
Chairman, Township Trustees  
Joe G. Miller

Approved this 24th day of May 1990  
Logan County Engineer  
Chester R. Kurty, P.E.

Approved this 1 day of June 1990  
Logan County Health Dept.  
William J. Vukobratovic

Approved this 30 day of May 1990  
Chairman, Bellefontaine City Planning Commission  
Joseph D. Hark

Transferred this 8th day of June 1990  
Logan County Auditor  
Jean Kenna

Filed for Record this 8th day of June 1990 at 4:11 P.M.  
Recorded this 8th day of June 1990 in Plat Cabinet A  
Slide 717A + B

Caroline Collins  
Logan County Recorder