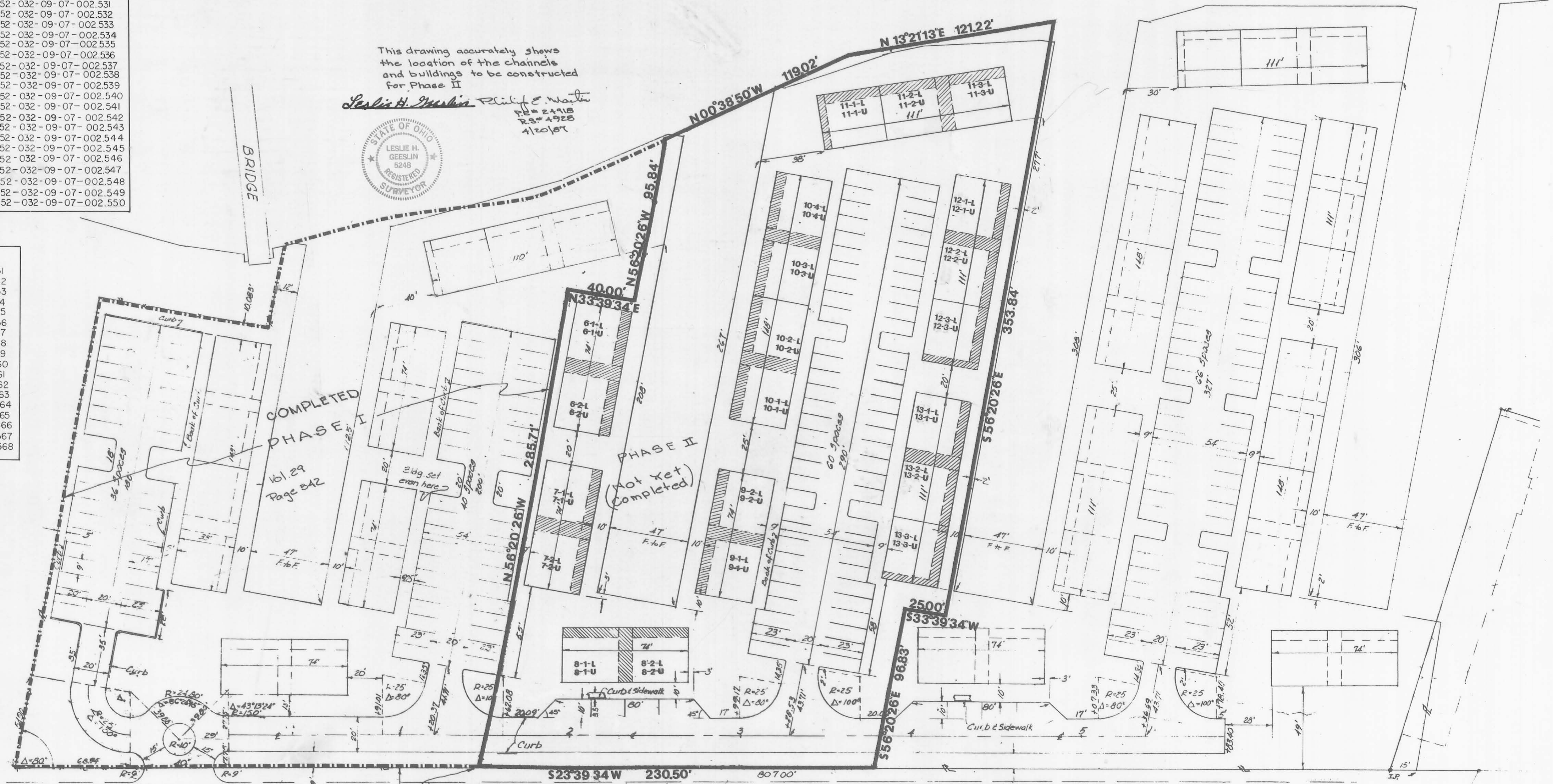


UNIT NO.	PARCEL NO.
6-1-L	52-032-09-07-002.527
6-1-U	52-032-09-07-002.528
6-2-L	52-032-09-07-002.529
6-2-U	52-032-09-07-002.530
7-1-L	52-032-09-07-002.531
7-1-U	52-032-09-07-002.532
7-2-L	52-032-09-07-002.533
7-2-U	52-032-09-07-002.534
8-1-L	52-032-09-07-002.535
8-1-U	52-032-09-07-002.536
8-2-L	52-032-09-07-002.537
8-2-U	52-032-09-07-002.538
9-1-L	52-032-09-07-002.539
9-1-U	52-032-09-07-002.540
9-2-L	52-032-09-07-002.541
9-2-U	52-032-09-07-002.542
10-1-L	52-032-09-07-002.543
10-1-U	52-032-09-07-002.544
10-2-L	52-032-09-07-002.545
10-2-U	52-032-09-07-002.546
10-3-L	52-032-09-07-002.547
10-3-U	52-032-09-07-002.548
10-4-L	52-032-09-07-002.549
10-4-U	52-032-09-07-002.550

UNIT NO.	PARCEL NO.
11-1-L	52-032-09-07-002.551
11-1-U	52-032-09-07-002.552
11-2-L	52-032-09-07-002.553
11-2-U	52-032-09-07-002.554
11-3-L	52-032-09-07-002.555
11-3-U	52-032-09-07-002.556
12-1-L	52-032-09-07-002.557
12-1-U	52-032-09-07-002.558
12-2-L	52-032-09-07-002.559
12-2-U	52-032-09-07-002.560
12-3-L	52-032-09-07-002.561
12-3-U	52-032-09-07-002.562
13-1-L	52-032-09-07-002.563
13-1-U	52-032-09-07-002.564
13-2-L	52-032-09-07-002.565
13-2-U	52-032-09-07-002.566
13-3-L	52-032-09-07-002.567
13-3-U	52-032-09-07-002.568

This drawing accurately shows the location of the channels and buildings to be constructed for Phase II

Leslie H. Geeslin, P.L.S. & S. & S.
 P.E. # 2448
 R.S. # 4928
 4/20/87



Reference Point of beginning is a P.K. nail in the west line of Chase Ave. and the north line of E. Main St.

523°59'34"W, 526.21' from the true point of beginning.

CHASE AVENUE

UNIT # 6-1-L (LOWER)
 6-1-U (UPPER)
 LIMITED COMMON AREA

DESCRIPTION CHECKED
 LOGAN CO. ENGINEER
 BY C.R. 9-16-87

TRANSFERRED: 9-16-87
 ORC 319.54 FEE PD
 ORC 322.02 FEE PD
 EXEMPT
 AUDITOR OF LOGAN COUNTY
 Jean Jones

BOUNDARY PHASE 2 HARBOURSIDE at INDIAN LAKE

SCALE 1" = 30'



STATE OF OHIO
 RECEIVED SEPT. 16, 1987
 TIME 3:51 P.M.
 RECORDED SEPT. 16, 1987
 PLAT CABINET
 VOL. NO. A PAGE 653
 CAROLYN COLLINS
 LOGAN COUNTY RECORDER

Plat of Phase II, HARBOURSIDE at INDIAN LAKE & being part of a 9.57 Acre parcel of land known as Tract #3, surveyed by Leslie H. Geeslin, R.S. #5248 in February 1986 for William R. Reed. Said PHASE II contains 2.242 acres and is located in the State of Ohio, Village of Russells Point, in Sec. 36, Town G9, Range 8E, Washington Twp, Logan County, Ohio. Previous Transfer was of 7.42 acres to Indian Lake Harbourside Ltd. by deed of record in D.B. 23, Page 93.

Note: Description is based upon a field survey and Ohio Plane Coordinates.

Prepared By
 P.E. Martin & Assoc.
 Worthington, Ohio
 April, 1987