

Corporation Line Extension
To
Village of Russells Point

Section 1 - T.7S. - R.8E.

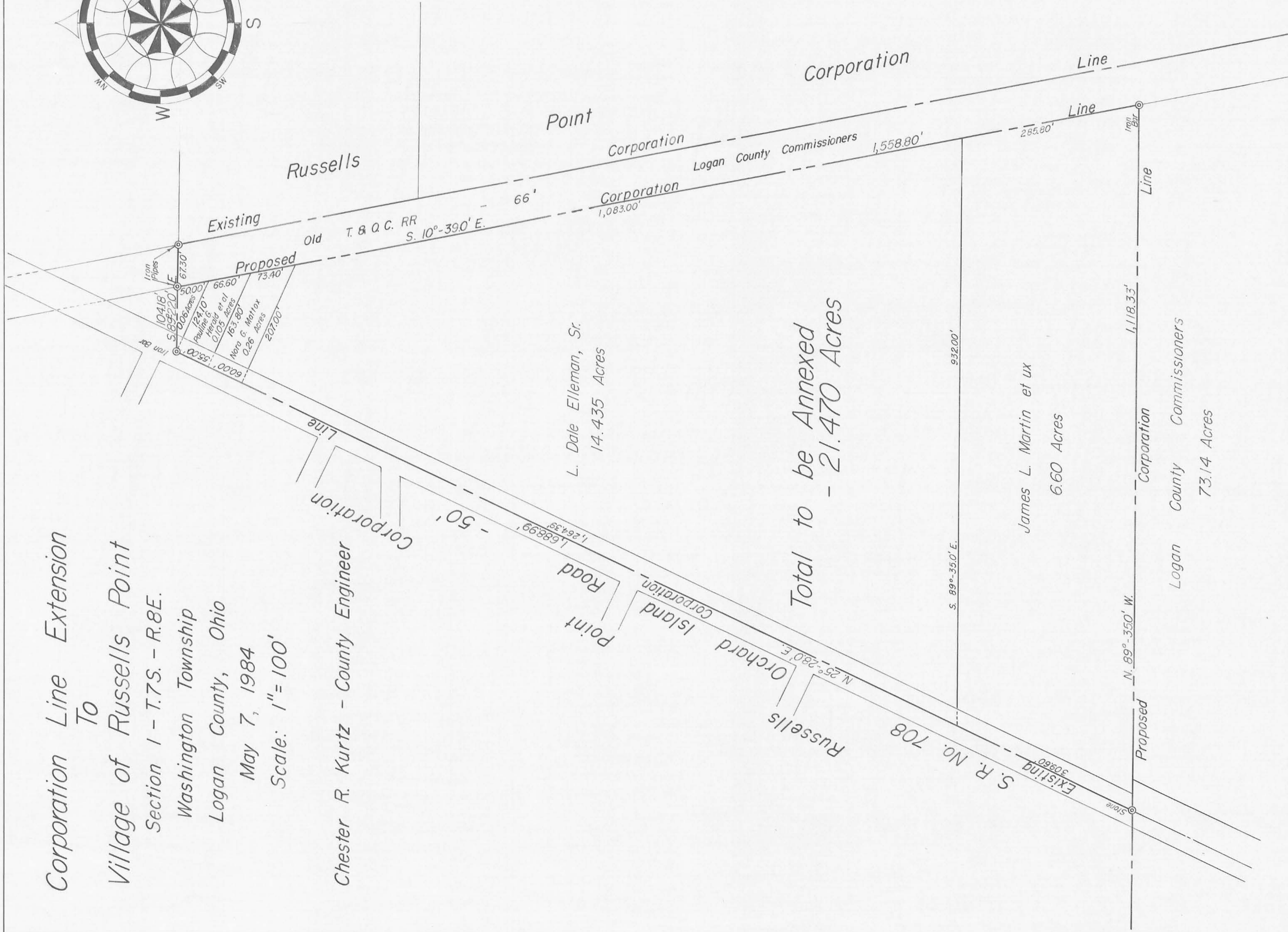
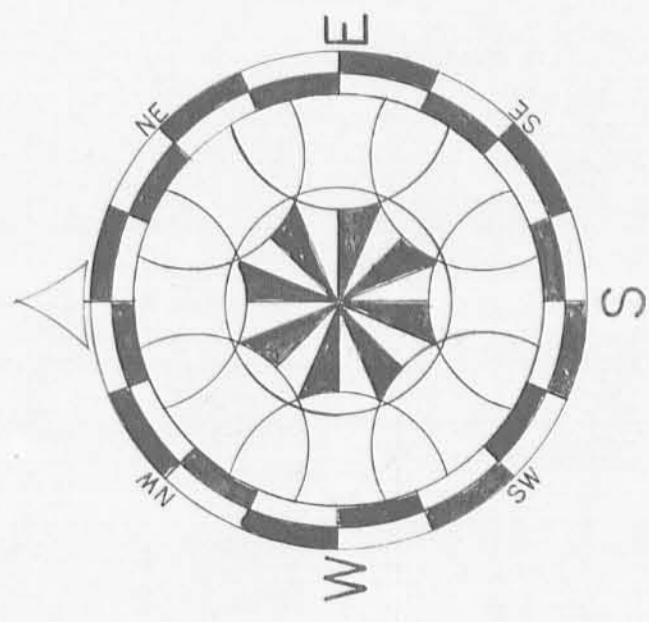
Washington Township

Logan County, Ohio

May 7, 1984

Scale: 1" = 100'

Chester R. Kurtz - County Engineer



Total to be Annexed
- 21.470 Acres

Prepared from existing records by:
Daniel E. Gilbert, P.S.
Reg. Sur. No. 5402
Logan County Deputy Surveyor