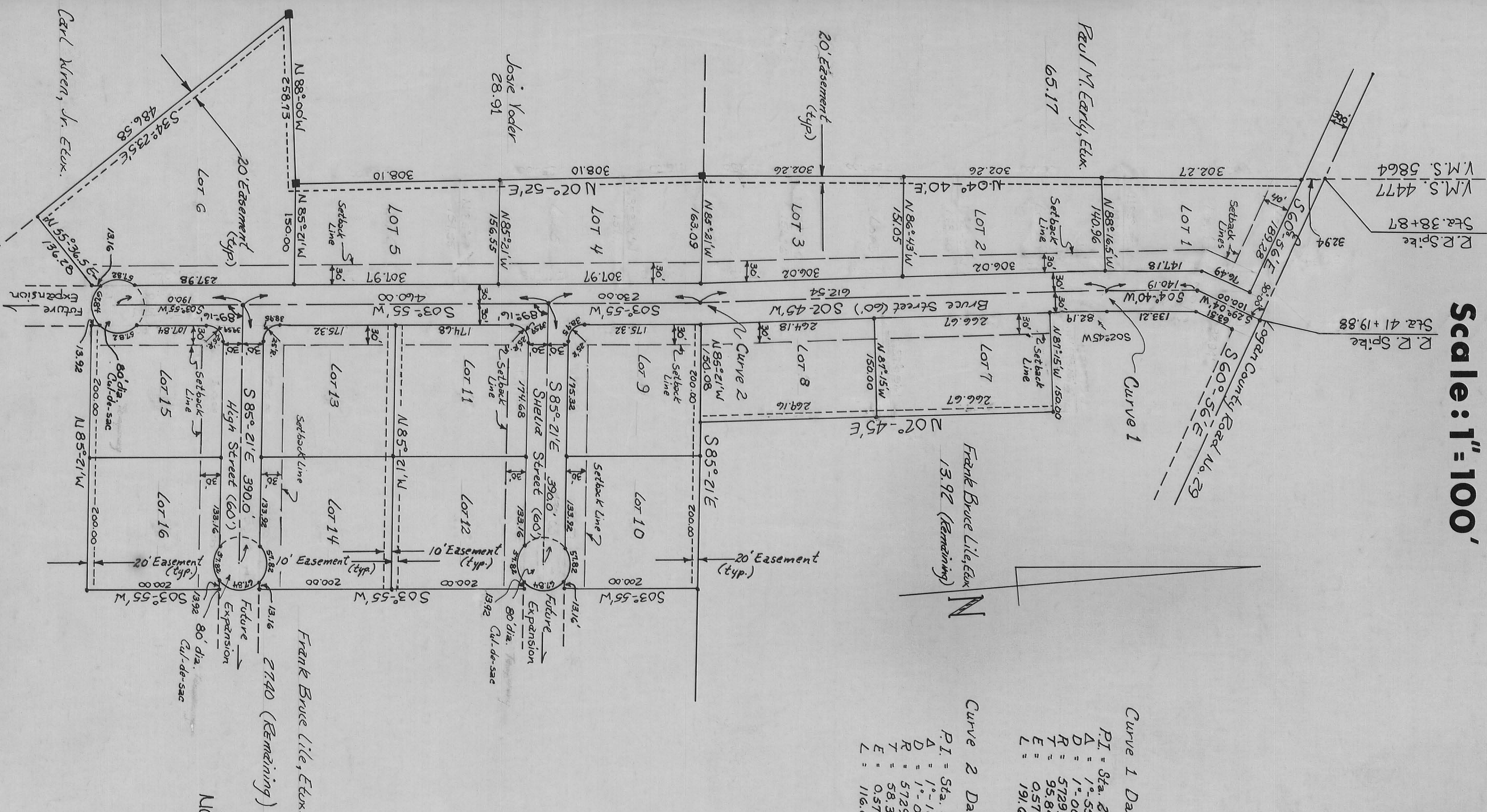


# SUNRISE ESTATES

V.M.S. No. 4477  
TOWNSHIP OF JEFFERSON  
COUNTY OF LOGAN  
STATE OF OHIO

Scale: 1"=100'

Date: February 7, 1973



Curve 1 Data:  
 P.I. = Sta. 2+40.19  
 Δ = 1°-55'  
 D = 1°-00'  
 R = 5729.58  
 T = 95.84  
 E = 0.57  
 L = 191.65

Curve 2 Data:  
 P.I. = Sta. 8+52.73  
 Δ = 1°-10'  
 D = 1°-00'  
 R = 5729.58  
 T = 58.34  
 E = 0.57  
 L = 116.66

DEDICATION

Know all men by these presents that FRANK BRUCE LUE & SHELLA A. LUE proprietors of the land indicated on the accompanying plat have authorized the platting thereof, and hereby dedicate the streets and easements to the public.

Witness  
 \_\_\_\_\_  
 \_\_\_\_\_  
 Proprietor

STATE OF OHIO - COUNTY OF LOGAN

Before me a Notary Public in and for said County personally came FRANK BRUCE LUE & SHELLA A. LUE who acknowledged the signing of the foregoing instrument to be their voluntary act and deed for uses and purposes therein expressed.  
 In witness whereof I have hereunto set my hand and affixed my official seal this 17th day of February, 1973.

SURVEYOR'S CERTIFICATE

The accompanying plat represents a subdivision of land in V.M.S. #4477, JEFFERSON Township, Logan County, Ohio. The tract has an area of 3.66 acres in streets and easements in lots making a total of 20.25 acres. All measurements are in feet and decimals of a foot. All measurements on curves are arc distances. I hereby certify that the accompanying plat is a correct representation of SURRISE ESTATES as surveyed December, 1972.

By \_\_\_\_\_  
 Notary Public  
 JAMES B. GIBBS, ATTORNEY AT LAW  
 NOTARY PUBLIC, STATE OF OHIO  
 My Commission Expires on \_\_\_\_\_  
 EXPIRES \_\_\_\_\_

I hereby certify to the accuracy of the accompanying Plat, and to the completion and/or bonding of the improvements in accordance with the approved plans and specifications.

\_\_\_\_\_  
 Logan County Engineer  
 Registered #3402  
 Daniel C. Whit, P.S.  
 Registered #3402  
 Surveyor

NOTE: Iron Pins Set On All lot Corners.  
 Surveyed & Platted By: R. Glaszelle,  
 S.L.T. #1127

Approved this 23<sup>rd</sup> day of November 1973  
 \_\_\_\_\_  
 Logan County Commissioners

Approved this 20<sup>th</sup> day of November 1973  
 \_\_\_\_\_  
 Logan County Commissioners

Transferred this 23<sup>rd</sup> day of Nov, 1973  
 \_\_\_\_\_  
 Logan County Recorder

Recorded this 23<sup>rd</sup> day of November, 1973 in Plat Book 6 F  
 Page No. 67  
 \_\_\_\_\_  
 Logan County Recorder

Reviewed this 31 day of Oct 1973  
 \_\_\_\_\_  
 Chairman, Township Trustees

Approved this \_\_\_\_\_ day of Nov, 1973  
 \_\_\_\_\_  
 Logan County Health Dept.

Reviewed this \_\_\_\_\_ day of \_\_\_\_\_, 19\_\_\_\_  
 \_\_\_\_\_  
 Logan County Soil and Water Conservation District