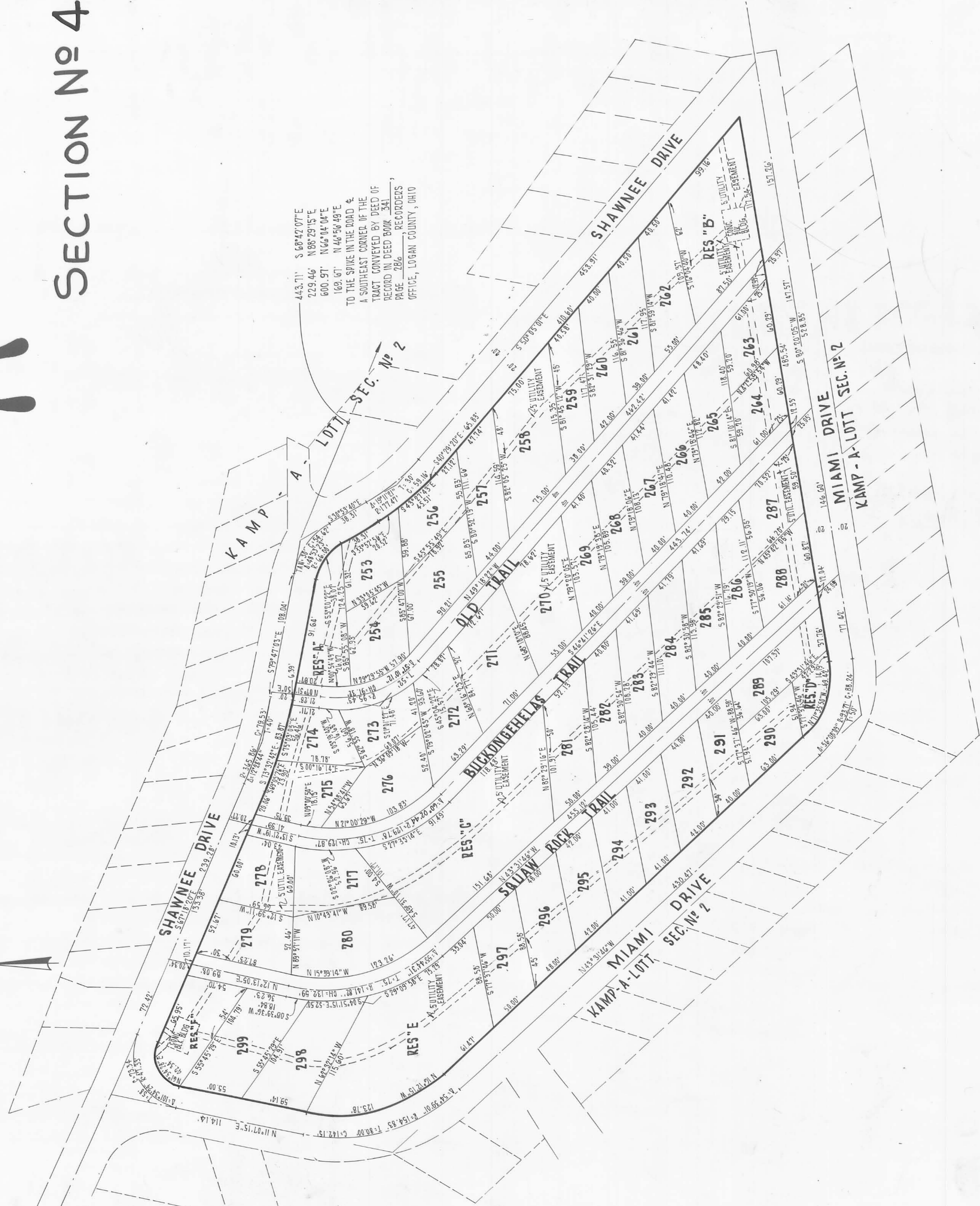


# Kamp A-Lott

## SECTION No 4



443.71' S 68°42'07"E  
729.46' N 88°29'15"E  
600.97' N 66°04'04"E  
163.67' N 46°50'49"E  
TO THE SPIKE IN THE ROAD &  
A SOUTHEAST CORNER OF THE  
TRACT CONVEYED BY DEED OF  
RECORD IN DEED BOOK 341  
PAGE 286 - RECORDERS',  
OFFICE, LOGAN COUNTY, OHIO

EASEMENTS ARE RESERVED WHERE INDICATED ON THE PLAT FOR THE CONSTRUCTION, OPERATION AND MAINTENANCE OF PUBLIC UTILITY LINES ABOVE AND BENEATH THE SURFACE OF THE GROUND AND WHERE NECESSARY ARE FOR THE CONSTRUCTION, OPERATION AND MAINTENANCE OF SERVICE CONNECTIONS TO ADJACENT LOTS AND LANDS

SITUATE IN THE STATE OF OHIO, COUNTY OF LOGAN, TOWNSHIP OF JEFFERSON, IN VIRGINIA MILITARY SURVEY 3139 AND BEING A PART OF THE TRACT OF LAND CONVEYED TO C.S. 4-B PARTNERSHIP AND R.C.D. INC. BY DEED OF RECORD IN DEED BOOK 341, PAGE 286, RECORDERS' OFFICE, LOGAN COUNTY, OHIO.

KNOW ALL MEN BY THESE PRESENTS THAT C.S. 4-B PARTNERSHIP BY ROY L. BENSON, DORIS E. BENSON, PARTNERS AND BY C.S.L. SERVICE CORPORATION PARTNER, BY ITS PRESIDENT, EARLE E. HAMMOND AND ITS SECRETARY, RICHARD A. PORTER, HAVING BEEN DULY AUTHORIZED, AND R.C.D. INC. BY ITS PRESIDENT, JOHN EDWARDS AND ITS SECRETARY, PAULA POWERS, HAVING BEEN DULY AUTHORIZED, BEING PROPRIETORS OF THE LAND INDICATED ON THE ACCOMPANYING PLAT HAVE AUTHORIZED THE PLATTING THEREOF AND DO HEREBY DEDICATE THE DRIVES, LANES AND RESERVE TO PRIVATE USE FOREVER.

*Richard M. Steward*  
*J. A. Hobb*  
*Ronald J. Wolcott*  
*Lorne M. Seamus*  
*Richard A. Porter*  
*John Edwards*  
*Paula Powers*

STATE OF OHIO, COUNTY OF MIAMI, \$5  
 BEFORE ME A NOTARY PUBLIC IN AND FOR SAID COUNTY PERSONALLY CAME ROY L. BENSON, DORIS E. BENSON, EARLE E. HAMMOND, PRESIDENT OF C.S.L. SERVICE CORPORATION AND RICHARD A. PORTER, SECRETARY OF C.S.L. SERVICE CORPORATION WHO ACKNOWLEDGED THE SIGNING OF THE FOREGOING INSTRUMENT TO BE THEIR VOLUNTARY ACT AND DEED FOR THE USES AND PURPOSES THEREIN EXPRESSED.  
 IN WITNESS WHEREOF, I HAVE HEREBY SET MY HAND AND AFFIXED MY OFFICIAL SEAL THIS 25th DAY OF June 19 73

*Margaret A. Ambrose*  
 Notary Public, Hancock Co., Ohio  
 My Commission expires May 21, 1978

STATE OF OHIO, COUNTY OF MIAMI, \$5

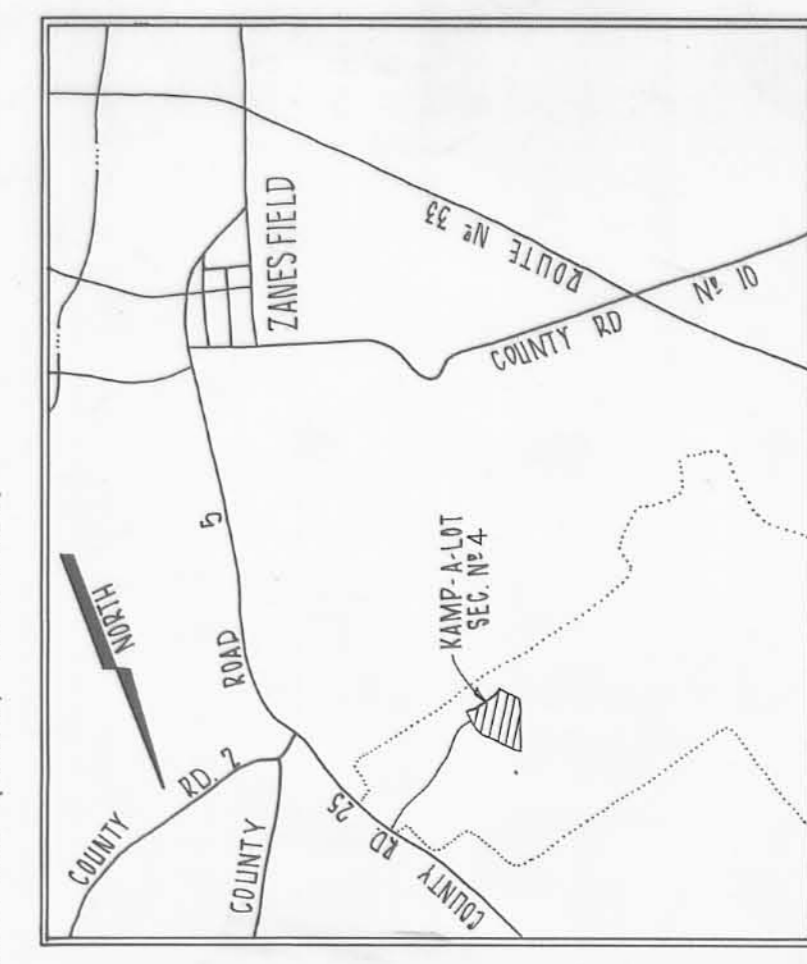
BEFORE ME A NOTARY PUBLIC IN AND FOR SAID COUNTY PERSONALLY CAME JOHN EDWARDS, PRESIDENT OF R.C.D. INC. AND PAULA POWERS, SECRETARY OF R.C.D. INC. WHO ACKNOWLEDGED THE SIGNING OF THE FOREGOING INSTRUMENT TO BE THEIR VOLUNTARY ACT AND DEED FOR THE USES AND PURPOSES THEREIN EXPRESSED.  
 IN WITNESS WHEREOF, I HAVE HEREBY SET MY HAND AND AFFIXED MY OFFICIAL SEAL THIS 20 DAY OF June 19 73

BY *Henry M. Stems*  
 Notary Public  
 REVIEWED THIS 19th DAY OF July 19 73 *Walter Stone* CHAIRMAN, TOWNSHIP TRUSTEES  
 APPROVED THIS 5th DAY OF July 19 73 *Charles R. Kury, P.E.* LOGAN COUNTY ENGINEER  
 APPROVED THIS 25th DAY OF June 19 73 *W.O. Vandenberg, D.M.* LOGAN COUNTY HEALTH DEPT.

REVIEWED THIS 19th DAY OF July 19 73  
 APPROVED THIS 14th DAY OF June 19 73  
 TRANSFERRED THIS 5th DAY OF July 19 73  
 FILED FOR RECORD THIS 5th DAY OF July 19 73 AT 4:02 P.M.  
 RECORDED THIS 5th DAY OF July 19 73 IN PLAT BOOK 6 F PAGE 64

*Luc Rayer*  
 Logan County Recorder

**SURVEYORS CERTIFICATE**  
 THE ACCOMPANYING PLAT REPRESENTS A SUBDIVISION OF LAND IN VIRGINIA MILITARY SURVEY No 3139, JEFFERSON TOWNSHIP, LOGAN COUNTY, OHIO. THE TRACT HAS AN AREA OF 0.866 ACRES IN STREETS, 1.041 ACRES IN RESERVES AND 4.041 ACRES IN LOTS MAKING A TOTAL OF 5.948 ACRES. ALL MEASUREMENTS ARE IN FEET AND DECIMALS OF A FOOT. ALL MEASUREMENTS ON CURVES ARE (CHORD) DISTANCES.



I HEREBY CERTIFY THAT THE ACCOMPANYING PLAT IS A CORRECT REPRESENTATION OF KAMP-A-LOTT SECTION No 4.

**THE THOMAS ENGINEERING & SURVEYING CO.**  
 3803 SULLIVANT AVE  
 COLUMBUS, OHIO  
 ORDER No. 55672

*Robert G. Wata*  
 REGISTERED SURVEYOR