

**CORPORATION LINE EXTENSION
DE GRAFF, OHIO
MIAMI TOWNSHIP LOGAN COUNTY
SECTIONS 5-6 TOWN 3 RANGE 13
NOVEMBER 1972**

SCALE: 1" = 200'

COURSES AND DISTANCES
CORPORATION LINE EXTENSION

| LINE | COURSE | DISTANCE |
|------|------------------|-------------------------------------|
| A-B | N. 6°-00' E. | 1523.05' (1 st SECTION) |
| B-C | N. 6°-14'-30" E. | 571.45' |
| C-D | N. 18°-36' W. | 761.70' |
| D-E | S. 86°-17' E. | 167.60' |
| E-F | S. 18°-36' E. | 1420.30' (1388.10' TO SECTION LINE) |
| F-G | S. 87°-09' E. | 725.76' |
| G-H | S. 5°-36' W. | 594.00' |
| H-I | N. 83°-39' W. | 476.52' |
| I-J | S. 5°-06' W. | 1010.00' |
| J-A | N. 88°-06' W. | 670.00' |

--- EXISTING CORPORATION LINE.
--- CORPORATION LINE EXTENSION.

SURVEYORS CERTIFICATE

I HEREBY CERTIFY THAT THE ANNEXED PLAT IS A CORRECT REPRESENTATION OF THE PROPERTY TO BE ANNEXED TO THE VILLAGE OF DE GRAFF, OHIO.

Daniel E. Gilbert, P.S.
DANIEL E. GILBERT, P.S.
REG. SUR. NO. 5402

ACCEPTANCE

THE ANNEXED PLAT WAS ADOPTED BY ORDINANCE NO. 825 AS AN ADDITION TO THE VILLAGE OF DE GRAFF, OHIO AT A MEETING OF THE VILLAGE COUNCIL ON THE 12th DAY OF SEPTEMBER, 1972.

Dean Linet, MAYOR
Robert Van Buskirk, CLERK

TRANSFERRED ON THIS 15th DAY OF DECEMBER, 1972.

Mary E. Slater
LOGAN COUNTY AUDITOR

211038
RECEIVED FOR RECORD AT 4:08 P.M. CLOCK ON THIS 15th DAY OF DECEMBER, 1972. RECORDED IN PLAT BOOK 6 VOLUME F PAGE 56.

Ruth Royer
LOGAN COUNTY RECORDER

APPROVAL

THE ANNEXED PLAT APPROVED AND ACCEPTED BY THE BOARD OF COUNTY COMMISSIONERS AT A REGULAR MEETING, THE 14th DAY OF JULY, 1972, AND RECORDED IN JOURNAL 2M PAGES 483.

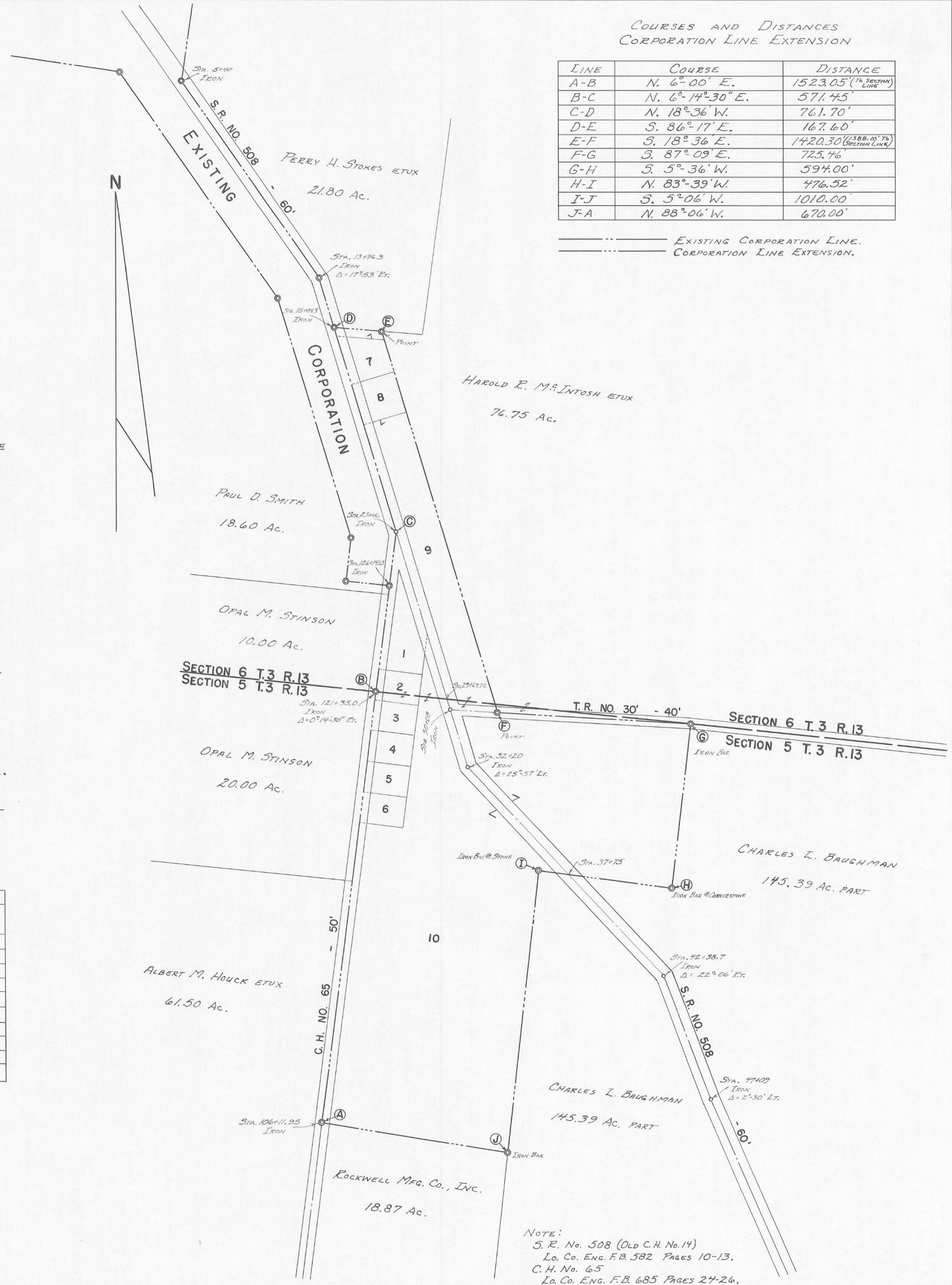
John R. Ankeep
Don Downing
Henry C. Yundt
LOGAN COUNTY COMMISSIONERS

APPROVED ON THIS 14th DAY OF JULY, 1972.

Chester R. Kurtz, P.E.
LOGAN COUNTY ENGINEER

PARCELS ANNEXED

| PARCEL No. | ACREAGE | NAME | SECTION No. |
|------------|-----------|-------------------------|-------------|
| 1 | 1.15 Ac. | VIRGIL R. OESBORNE ETUX | 6 |
| 2 | 0.39 Ac. | LESLIE L. IRISH ETAL | 5 |
| 3 | 0.39 Ac. | VIRGIL R. OESBORNE ETUX | 5 |
| 4 | 0.39 Ac. | CHARLES O. MARKER ETUX | 5 |
| 5 | 0.39 Ac. | VIRGIL R. OESBORNE ETUX | 5 |
| 6 | 0.39 Ac. | CHARLES O. MARKER ETUX | 5 |
| 7 | 0.54 Ac. | GLENN L. HARBOUR ETUX | 6 |
| 8 | 0.53 Ac. | CARY L. COMER ETUX | 6 |
| 9 | 3.99 Ac. | HAROLD L. McINTOSH ETUX | 5 |
| 10 | 27.42 Ac. | HAROLD L. McINTOSH ETUX | 5 |
| | 35.58 Ac. | TOTAL | |



NOTE:
S. R. No. 508 (Old C. H. No. 14)
Lo. Co. Eng. F.B. 582 Pages 10-13.
C. H. No. 65
Lo. Co. Eng. F.B. 685 Pages 24-26.

NOTE: THIS TRACING TO BE FILED IN THE OFFICE OF THE LOGAN COUNTY ENGINEER.