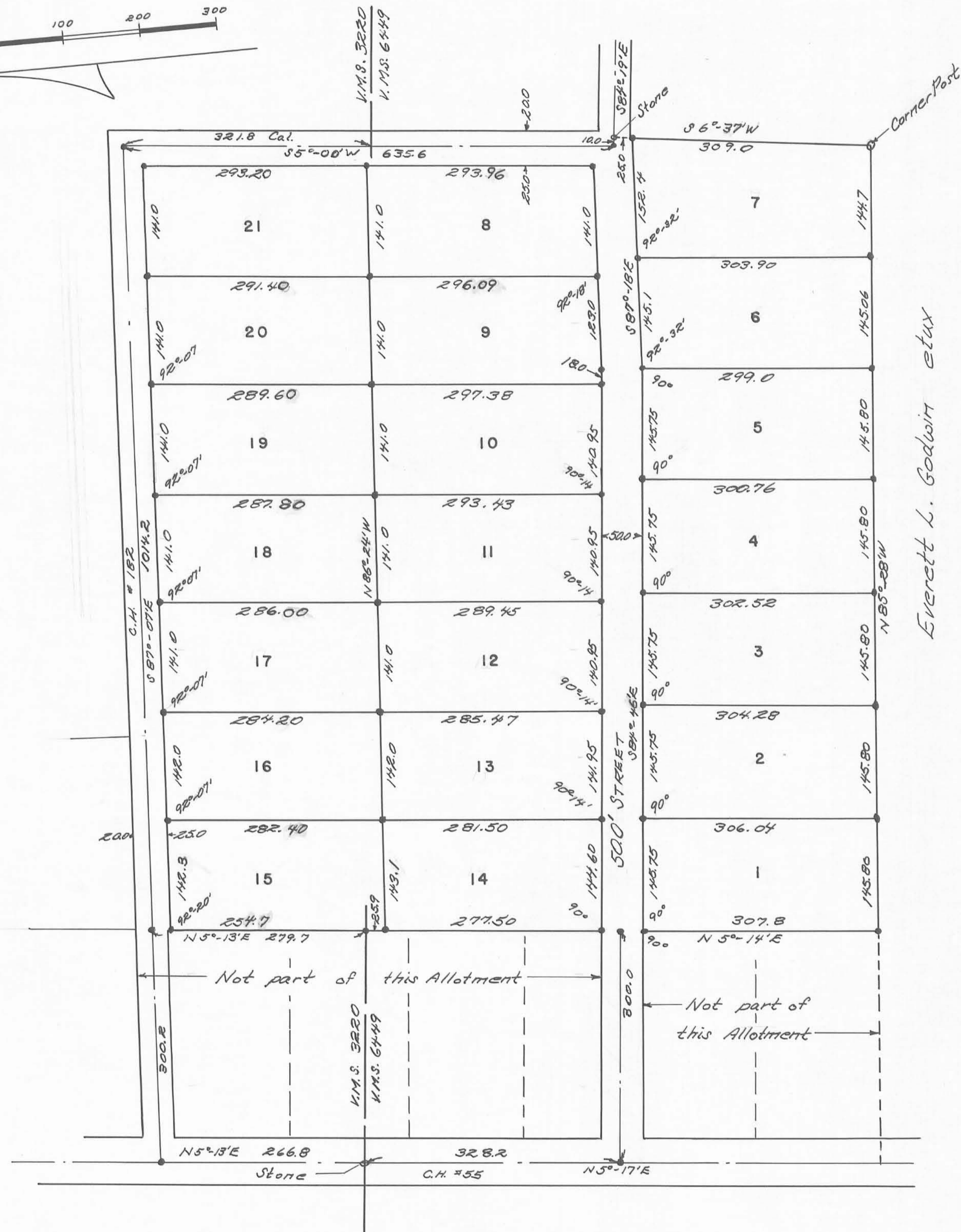


Note:
 6.83 acres from a 61.56 acre tract in V.M.S. 3220.
 15.49 acres from a 27.91 acre tract in V.M.S. 6449.
 0.34 of an acre from a 1.03 acre tract in V.M.S. 6449.
 22.66 Total



Everett L. Godwin et ux

SURVEYOR'S CERTIFICATE

The accompanying plat represents a subdivision of land in V.M.S. 3220 and V.M.S. 6449 Jefferson Township, Logan County. The tract has an area of 20.24 acres in lots and 2.42 acres in streets to the E of County Rd. #182. Iron bars were placed at all lot corners as indicated by *. All measurements are in feet and hundredths of feet. I hereby certify the accompanying plat is a correct representation of MOUNT CREST ACRES ALLOTMENT No. 1.

Quinn L. Swick
 Surveyor 4271
 639 Hamilton St.
 Bellefontaine, Ohio

DEDICATION

Know all men by these present that Russell R. Ede & Mary B. Ede proprietors of the land indicated on the accompanying plat have authorized the laying out of same as indicated in the accompanying plat. The streets are dedicated to the public.

William J. Ede Witness
Bernice L. Devine Witness
Russell R. Ede owner.
Mary B. Ede owner.

STATE OF OHIO; COUNTY OF LOGAN:SS

Be it remembered that on the 10th day of January in the year of our Lord One Thousand Nine Hundred Sixty Five before me a Notary Public in and for said County, personally came Mary B. Ede and Russell R. Ede, owners of the land above mentioned and grantors in the foregoing dedication who acknowledged the signing thereof to be their free and voluntary act and deed.

October 30, 1966
 My Commission Expires
Bernice L. Devine
 Notary Public
 Logan County, Ohio

APPROVAL

Approved on the 3rd day of February, 1965.
Douglas W. Beach M.D.
 Logan County Health Commissioner
 County Health Board

Approved on the 12th day of February, 1965.
Earle Charles - Chairman
 Jefferson Twp. Zoning Comm.

Tentative approval given by City Planning Commission, Bellefontaine, Ohio this date 1-19-65 by
Charles Kloring Jr.
 Chairman Planning Comm.

Approved on the 15th day of February, 1965.
Chester R. Kutz
 County Engineer

Approved on the 15th day of February, 1965.
Don Downing Harvey G. Ferrell
 County Commissioners

ACCEPTANCE

Transferred on the 16 day of FEBRUARY 1965.
Chas H. Chamberlain
 County Auditor

Received for record at 1:45 O'clock P.M. on the 16th day of February, 1965. Recorded in Plat Book 4 D, page 110.

Ruth Royer
 County Recorder

NOTE:

New roads to be private roads, to be maintained by the Grantors herein, until construction of said roads complies with the minimum requirements for County and Township roads established and determined by the Logan County Engineer.

Russell R. Ede Grantors: Mary B. Ede owner.

The roads indicated on the above plat have been constructed in compliance with the minimum requirements for County and Township roads and are hereby approved.
Chester R. Kutz, P.E.
 Logan County Engineer

MOUNT CREST ACRES ALLOTMENT NO. 1
 V.M.S. 3220 & V.M.S. 6449
 JEFFERSON TOWNSHIP; LOGAN COUNTY; OHIO
 1" = 100'
 1965

