

SURVEYORS CERTIFICATE

The accompanying plat a subdivision of land in V.M.S. 10306 in McArthur Township Logan County Ohio. The tract has an area of 7.44 acres in Lots and 2.14 acres in Streets making a total of 9.58 acres. The width of Streets are shown on the Plat. All measurements are in feet and Decimals of feet, I hereby certify that the accompanying Plat is a correct representation of Bell Allotment No 2

Foster F. Wright  
Registered Surveyor No 1673

STATE OF OHIO  
COUNTY OF LOGAN SS:

Be it remembered that on this \_\_\_\_\_ day of \_\_\_\_\_ in the year of our Lord one thousand Nine Hundred and Sixty-nine before me a Notary Public in and for said County personally came the grantors in the foregoing dedication and acknowledged the signing thereof to be their free voluntary act and deed

Notary Public  
My Commission Expires \_\_\_\_\_

ACCEPTANCE

The annexed plat was approved and accepted by the Board of County Commissioners at a regular meeting this \_\_\_\_\_ day of \_\_\_\_\_ 1969

Logan County Commissioners

AUDITORS OFFICE

Lots transferred this \_\_\_\_\_ day of \_\_\_\_\_ 1969

Logan County Auditor

RECORDERS OFFICE

Received for record at \_\_\_\_\_ o'clock on this \_\_\_\_\_ day of \_\_\_\_\_ 1969 Reorded in Plat Book \_\_\_\_\_ Vol. \_\_\_\_\_ Page \_\_\_\_\_

Logan County Recorder

COUNTY ENGINEERS OFFICE

APPROVED THIS \_\_\_\_\_ DAY OF \_\_\_\_\_ 1969

Logan County Engineer

HEALTH BOARD

Approved this 15<sup>th</sup> day of April 1968

Logan County Health Board

DEDICATION

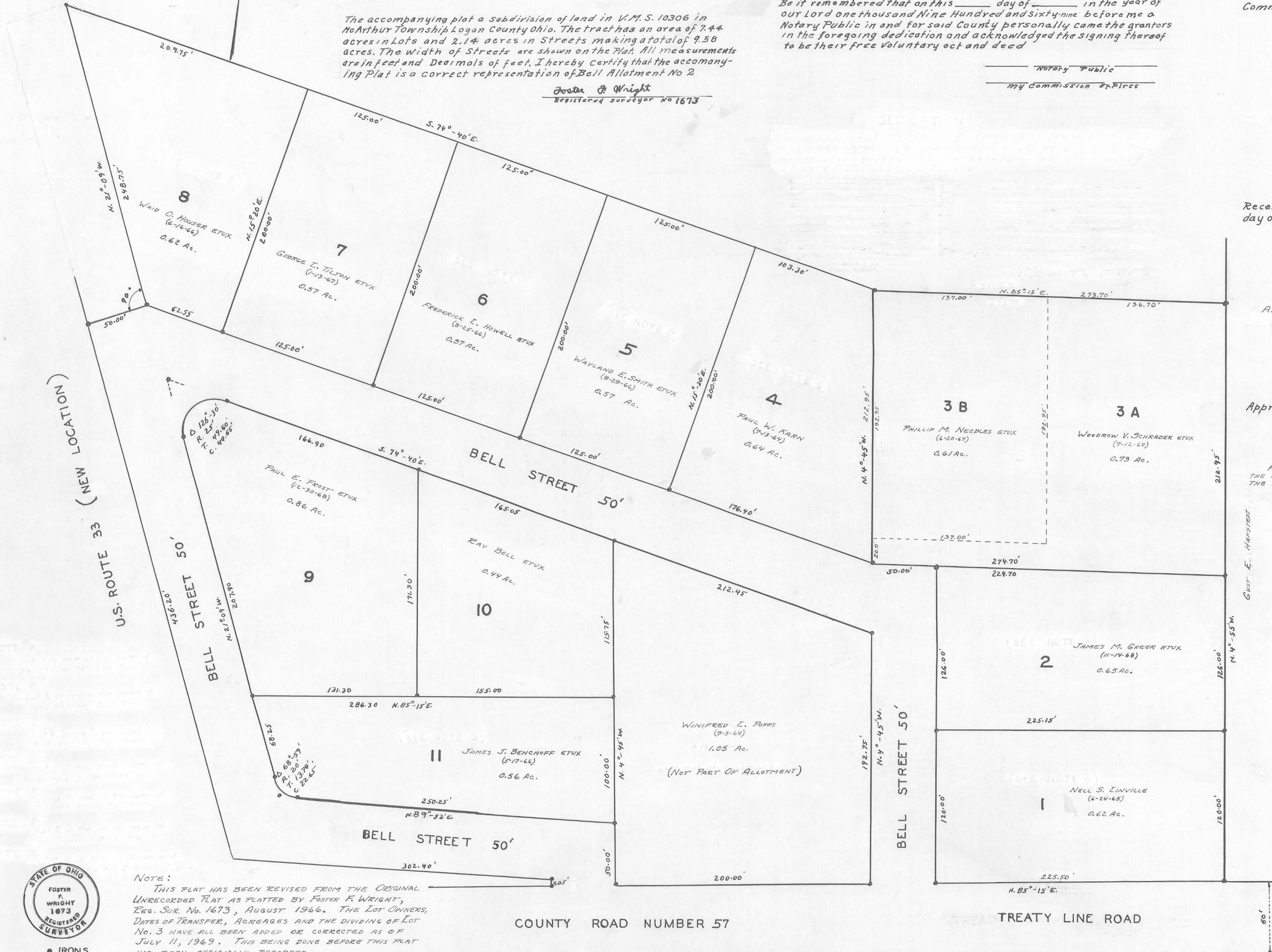
KNOW ALL MEN BY THESE PRESENTS THAT THE OWNERS OF THE LAND INDICATED ON THE ACCOMPANYING PLAT HAS AUTHORIZED THE LAYING OUT OF THE SAME AS INDICATED ON THE PLAT AND TO HEREBY DEDICATE THE ROADS AND STREETS TO THE USE OF THE PUBLIC.

WITNESS: \_\_\_\_\_ LOT OWNERS:

LOT 1	_____
LOT 2	_____
LOT 3A	_____
LOT 3B	_____
LOT 4	_____
LOT 5	_____
LOT 6	_____
LOT 7	_____
LOT 8	_____
LOT 9	_____
LOT 10	_____
LOT 11	_____
LOT 12	_____

BELL NUMBER  
MCARTHUR  
LOGAN COUNTY  
AUGUST 1966

ALLOTMENT TWO  
TOWNSHIP  
OHIO  
SCALE 1"=40'



NOTE:  
THIS PLAT HAS BEEN REVISED FROM THE ORIGINAL UNRECORDED PLAT AS PLATTED BY FOSTER F. WRIGHT, REG. SUR. NO. 1673, AUGUST 1966. THE LOT OWNERS, DATES OF TRANSFER, ACRES AND THE DIVIDING OF LOT NO. 3 HAVE ALL BEEN ADDED OR CORRECTED AS OF JULY 11, 1969. THIS BEING DONE BEFORE THIS PLAT HAD BEEN OFFICIALLY RECORDED.  
CORRECTED AND REVISED BY DANIEL E. GILBERT, REG. SUR. NO. 5402 - TAX MAP DRAFTSMAN, LOGAN COUNTY ENGINEERS OFFICE.



IRONS  
FILE FW-537

J-170

J-170

COUNTY  
4448  
INDEX NO.

This tracing to be filed with  
Logan County Engineer