

Approved this 26<sup>th</sup> day of September 1962.

E. K. Lane  
Logan County Engineer

The annexed plat is hereby approved and accepted by the Board of County Commissioners at a regular meeting this 1<sup>st</sup> day of October 1962.

S. Ernest Howlton  
Forster A. Cole  
William A. Fox  
Logan County Commissioners

The within lots transferred this 1<sup>st</sup> day Oct. 1962.

Charles H. Chamberlain  
Logan County Auditor

165773

Received for record at 10:50 o'clock A.M. on this 5<sup>th</sup> day of October 1962.  
Recorded in Plat Book 4, Volume D, Page 91.

Rosanna L. Strayer  
Logan County Recorder

KNOW ALL MEN BY THESE PRESENTS:  
That Warren L. Edwards and Jean Clair Edwards, proprietors of the land indicated on the accompanying plat, have authorized the platting thereof and do hereby dedicate the drive to the lot owners for their use. That portion of County Highway 286 bounded by said plat is hereby dedicated to the public use forever.

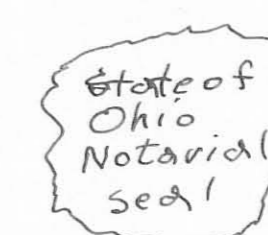
James R. Joelle  
Daniel C. Millett  
Witness

Warren L. Edwards  
Jean Clair Edwards

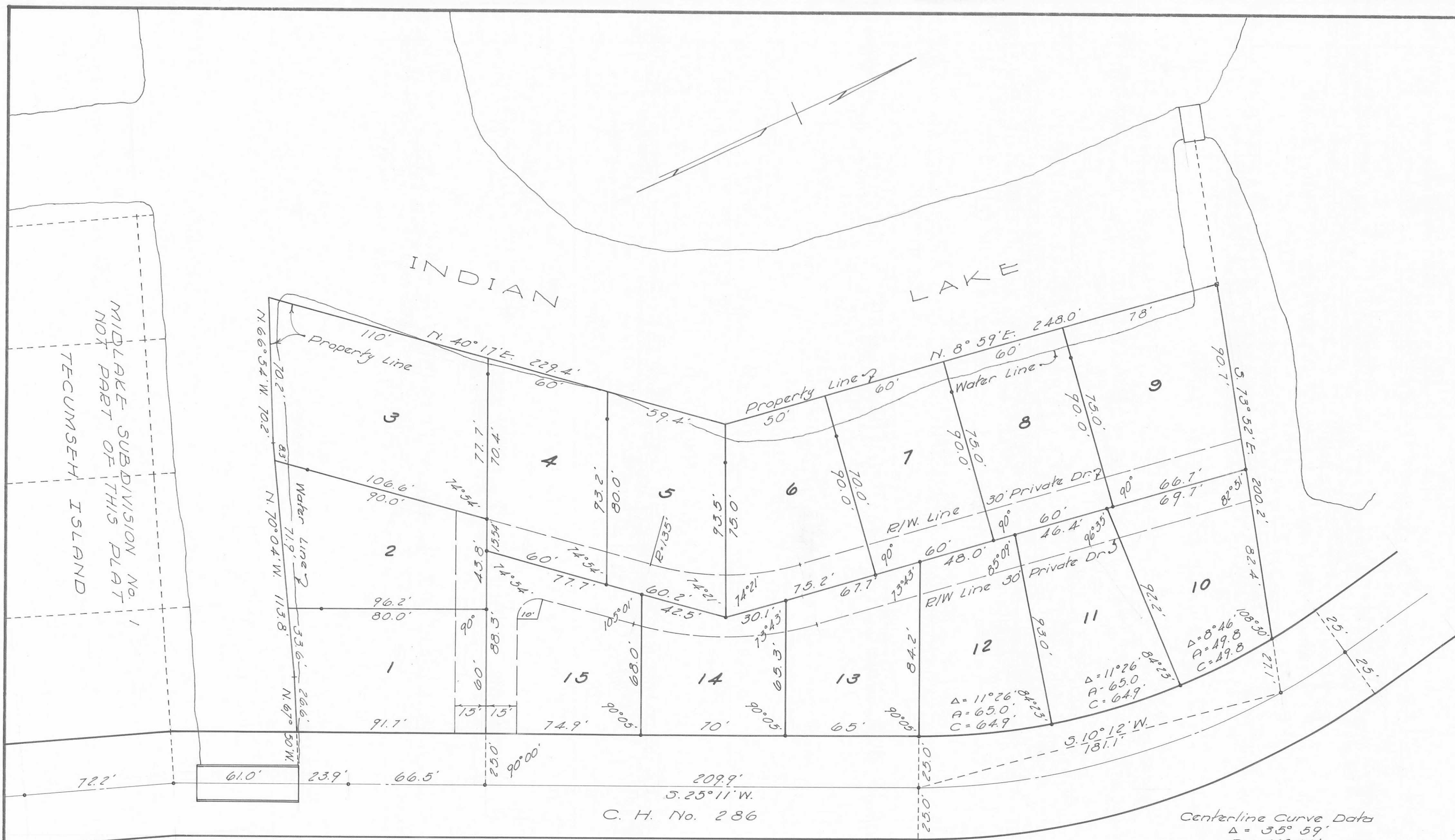
STATE OF OHIO 55  
COUNTY OF LOGAN

Be it remembered that on this the 5<sup>th</sup> day of October in the year of our Lord One Thousand Nine Hundred and Sixtytwo, before me, a notary public in and for said County, personally came Warren L. Edwards and Jean Clair Edwards, grantors in the foregoing dedication, who acknowledged the signing thereof to be their free and voluntary act and deed.

James R. Joelle  
Notary Public  
July 11, 1963  
My Commission Expires



COUNTY 4045  
INDEX NO.  
INDEXED ON MAP



REFERENCE:  
State of Ohio, Dept. of Natural Resources  
Plat-File No. 46 I-RS, 12-1.2  
Deed Volume 283, page 147

The accompanying plat represents a subdivision of land in Virginia Military Survey 12276, Stokes Township, Logan County, Ohio.  
The tract has an area of 1.90 acres in lots and 0.27 acres in County Highway 286, making a total of 2.17 acres.  
The private drive as indicated by the dashed line is 30 feet wide.  
Measurements are in feet and tenths of a foot.  
• = Iron Pin  
□ = 2" Hub

Don L. Dodson  
Don L. Dodson  
Registered Surveyor 4270  
Bellefontaine, Ohio  
August, 1962



**EDWARDS SUBDIVISION  
CRANE TOWN ISLAND  
V.M.S. 12276 - STOKES TOWNSHIP  
LOGAN COUNTY, OHIO  
1962**

SCALE 1" = 30'  
0 20 40 60 80 100