

SURVEYORS CERTIFICATE

The accompanying Plat represents a subdivision of land in the Township of Stokes County of Logan State of Ohio and in V.M.S. 12277. I hereby certify that the accompanying Plat is a correct representation of

Foster F. Wright
Registered Engineer No. 1013

DEDICATION

Know all men by these presents that the owners of the land indicated on the accompanying Plat has authorized the laying out of the same as indicated on the Plat and do hereby dedicate the same.

Charles Settlemyre Orma Newland
Edwin J. Sumner Witness OWNERS

**STATE OF OHIO
COUNTY OF LOGAN SS:**

Be it remembered that on this 9th day of JUNE in the year of our Lord One Thousand Nine Hundred and Sixty before me a Notary Public in and for said County personally came the grantors in the foregoing dedication and acknowledged the signing thereof to be their free and voluntary act and deed

Charles Settlemyre
Notary Public
CHARLES SETTLEMIRE, Notary Public
My Commission Expires Sept. 11, 1960

APPROVED

DATE E. K. Lore JUNE 13, 1960
Logan County Engineer

APPROVED

DATE June 13, 1960 W. E. Brown M.D. Health Comm.
Logan County Health Board

156648

RECEIVED FOR RECORD June 14th 1960 @ 10:20 AM
RECORDED IN PLAT BOOK 4-D PAGE 77
Edward L. Strayer
Logan County Recorder

APPROVED

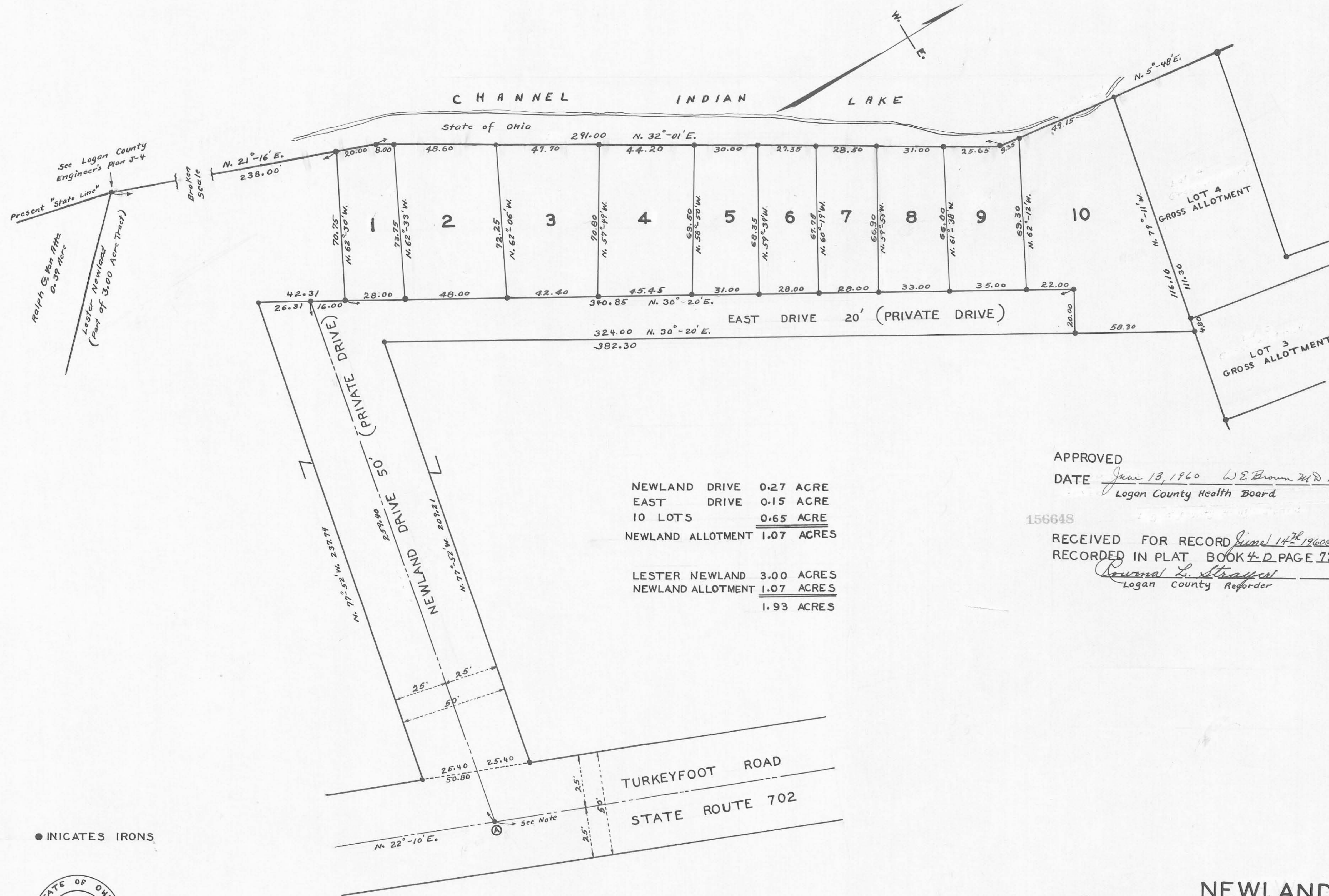
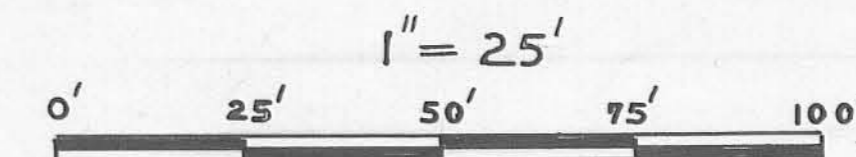
DATE Foster A. Pace June 13, 1960
William A. Fox June 13, 1960

Logan County Commissioners

TRANSFERED

DATE Chas. H. Chamberlain June 14, 1960
Logan County Auditor

NEWLAND ALLOTMENT
STOKES TOWNSHIP
LOGAN COUNTY OHIO
V.M.S. 12277 JUNE 1960



NEWLAND DRIVE	0.27 ACRE
EAST DRIVE	0.15 ACRE
10 LOTS	0.65 ACRE
NEWLAND ALLOTMENT	1.07 ACRES
LESTER NEWLAND	3.00 ACRES
NEWLAND ALLOTMENT	1.07 ACRES
	1.93 ACRES

NOTE
IRON (A) IS 2562.40 FEET FROM AN IRON IN THE CENTER LINE OF STATE ROUTE 69

● INDICATES IRONS



THIS TRACING TO BE FILED WITH LOGAN COUNTY ENGINEER

BOOK FW-31
FILE FW-341