

SURVEYORS CERTIFICATE

The accompanying Plat represents a Subdivision of land in the Township of Stokes, County of Logan, State of Ohio and in V.M.S. 12277. King Ave. Has an area of 1.23 Acres. The Six Lots have an area 0.83 Acre making a total in the Allotment of 2.06 Acres. The distances are in feet and tenths. I hereby certify that the accompanying Plat is a correct representation of King's Landing Allotment No Two.

Foster F. Wright
Registered Surveyor Number 1673

STATE OF OHIO COUNTY OF LOGAN SS:

Be it remembered that on this 17th day of May in the year of our Lord One Thousand Nine Hundred and Sixty before me a Notary Public in and for said County personally came the grantors in the foregoing dedication and acknowledged the signing thereof to be their free and Voluntary act and deed

James M. Miles
Notary Public
Nov. 21, 1962
My Commission Expires November 21, 1962

TRANSFERRED
DATE July 25, 1960
Chas. H. Chamberlain
Logan County Auditor

157196
RECEIVED FOR RECORD July 25, 1960
RECORDED IN PLAT BOOK 4-D PAGE 79
10:00 A.M. Rovena L. Strasser
Logan County Recorder

APPROVED
DATE May 21, 1960
E. K. Cole
Logan County Engineer

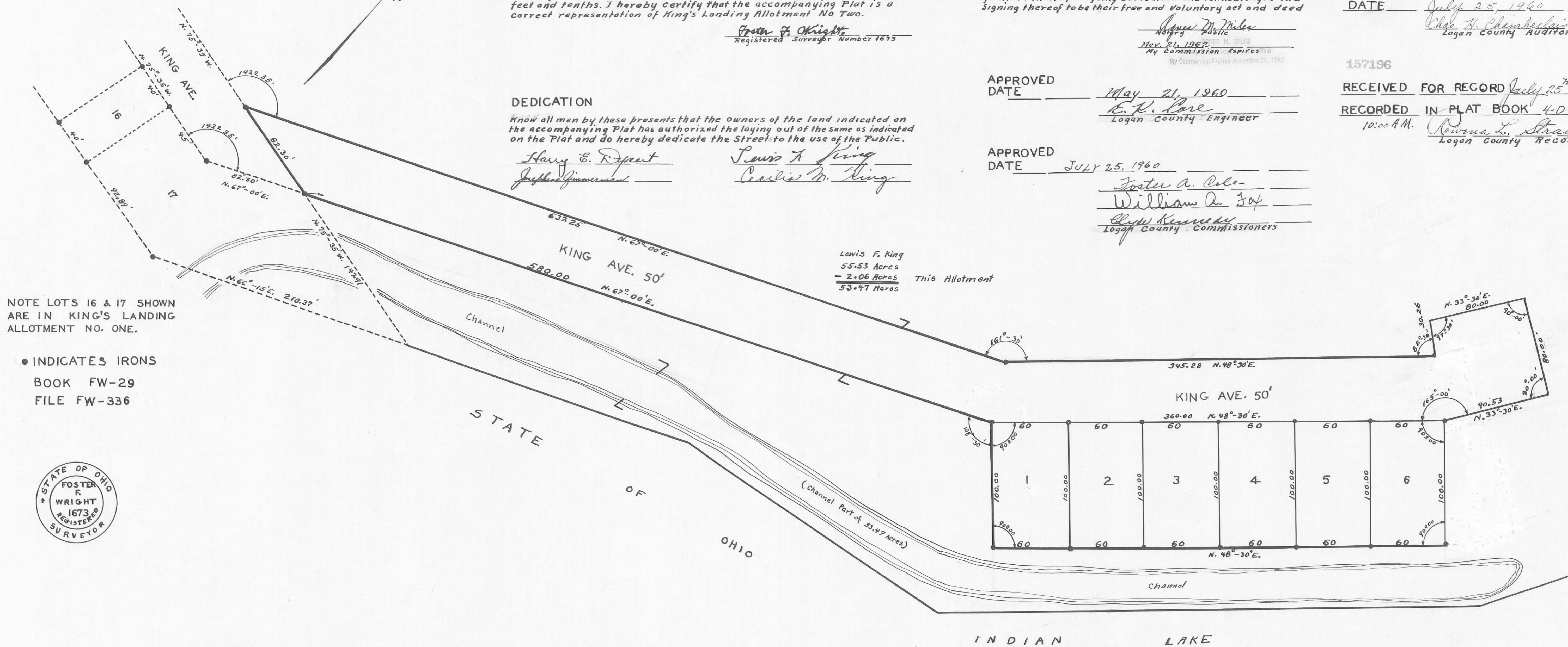
APPROVED
DATE JULY 25, 1960
Foster A. Cole
William A. Sof
Edw. Kennedy
Logan County Commissioners

DEDICATION

Know all men by these presents that the owners of the land indicated on the accompanying Plat has authorized the laying out of the same as indicated on the Plat and do hereby dedicate the Street to the use of the Public.

Harry E. Rypert Lewis F. King
Josephine Zimmerman Charles M. King

Lewis F. King
55.53 Acres
- 2.06 Acres
53.47 Acres This Allotment



NOTE LOTS 16 & 17 SHOWN ARE IN KING'S LANDING ALLOTMENT NO. ONE.

● INDICATES IRONS
BOOK FW-29
FILE FW-336



This tracing to be filed with Logan County Engineers

KING'S LANDING ALLOTMENT NUMBER TWO
STOKES TOWNSHIP
LOGAN COUNTY OHIO
V.M.S. 12277 MAY 1960

