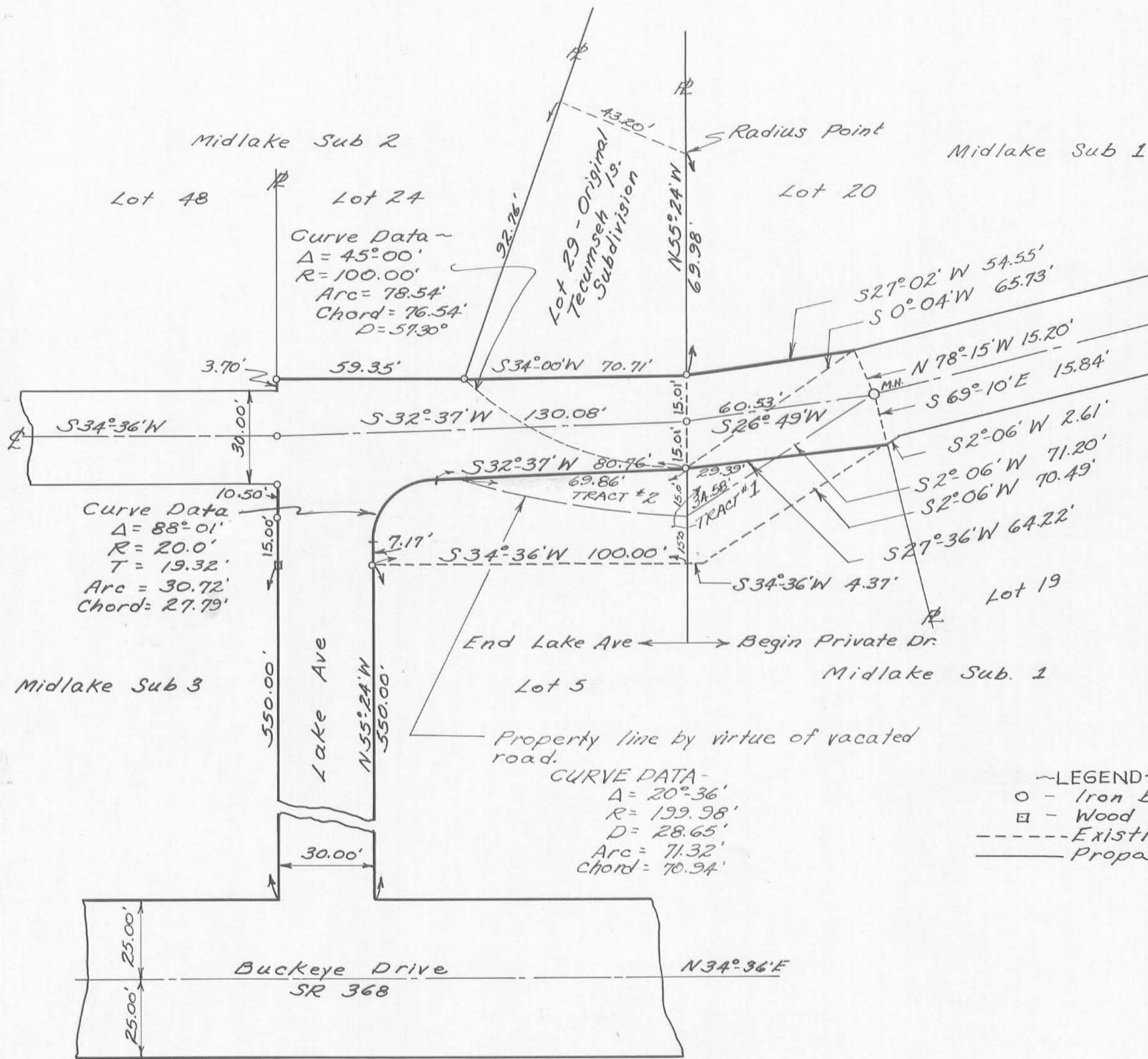


Note:
 For original road dedications reference is made to Plat book Volume 3 page 344, Tecumseh Is. Subdivision and Plat book 4 page 7, Midlake Subdivision #1.



Accepted March 7, 1960 & posted in Commissioners Journal 1-P, pages 1 & 2.

Forster Cole
William A. Fof
Glyde Kennedy
 Logan County Commissioners

Approved this 7 day of March 1960

E. K. Cole
 Logan County Engineer

~LEGEND~
 O - Iron bars or pipe
 □ - Wood Hubs
 - - - Existing R/W Lines
 ——— Proposed R/W Lines

CURVE DATA-
 Δ = 20°36'
 R = 199.98'
 D = 28.65'
 Arc = 71.32'
 Chord = 70.94'

PROPOSED
 VACATION AND RELOCATION
 OF
 LAKE AVE & PRIVATE DR.
 TECUMSEH ISLAND LOGAN COUNTY, OHIO
 VMS 12276
 WILLIAM H. LEWIS REGISTERED SURVEYOR
 4465



Filed for record this 29th day of March 1960
 at 11:20 o'clock. Recorded in Book 4 D Page 71
Rosemary L. Strayer
 Logan County Recorder