

THIS TRACING TO BE FILED WITH
LOGAN COUNTY ENGINEER.

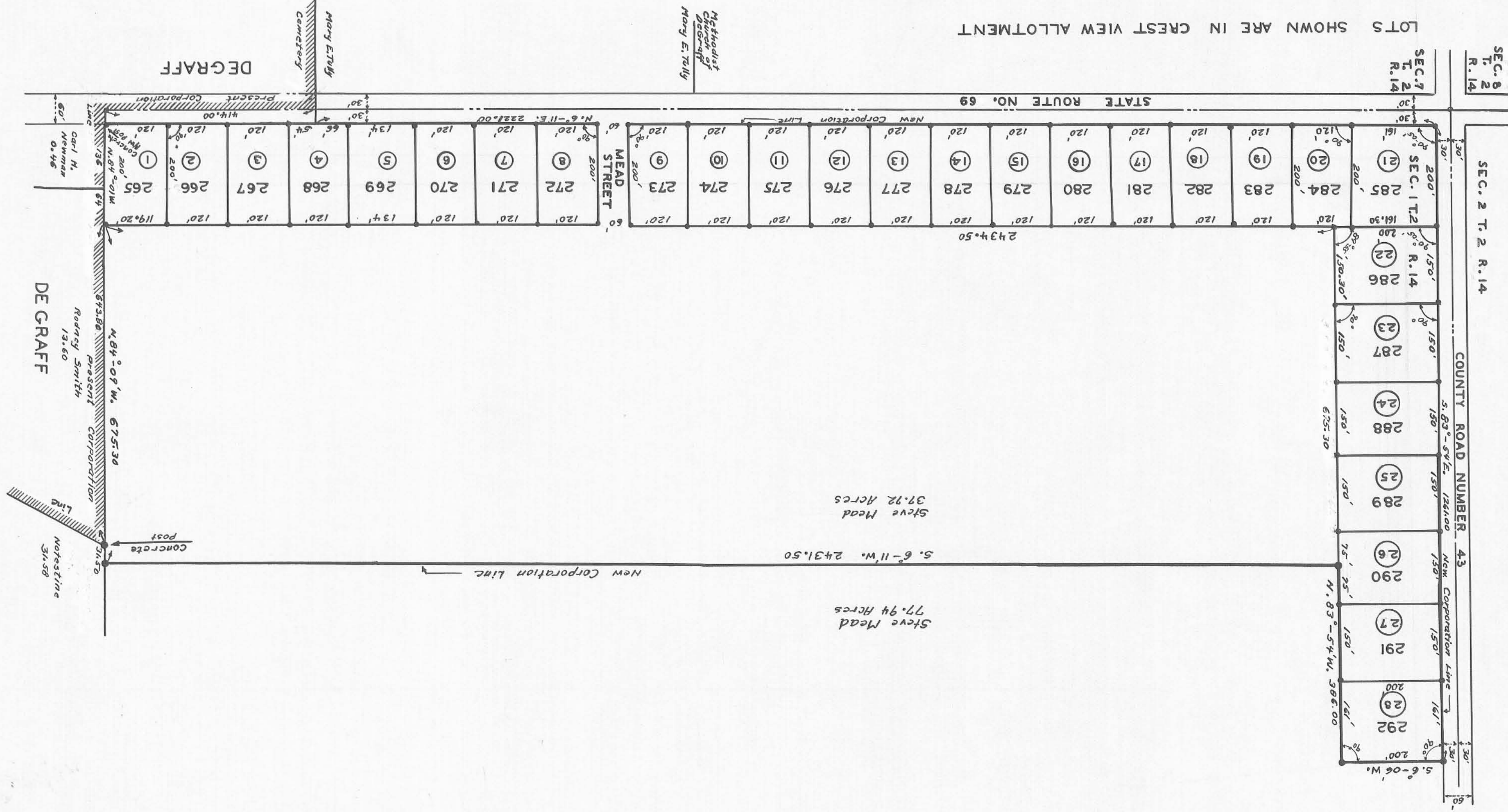


INDICATES IRONS
FILE FW-326

NUMBERS IN CIRCLES ARE ORIGINAL NUMBERS OF GREST VIEW ALLOTMENT
OTHER NUMBERS ARE CONSECUTIVE NUMBERING FOR DEGRAFF LOTS

AREA OF 28 LOTS _____ 16.71 ACRES
 AREA MEAD STREET _____ 0.27 ACRE
 AREA ROUTE 69 (E. HALF AT CEMETERY) _____ 0.28 ACRE
 AREA LAND _____ 37.72 ACRES
 TOTAL AREA INTO CORPORATION _____ 54.98 ACRES

LOTS SHOWN ARE IN GREST VIEW ALLOTMENT



SURVEYORS CERTIFICATE
 I hereby certify that the annexed plat is a correct representation of the property to be annexed to the Village of Degraff Ohio
 Gordon B. Knight
 Registered Surveyor No. 1673

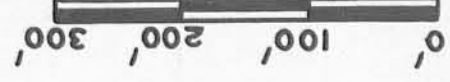
ACCEPTANCE
 The annexed plat was approved and accepted by the Board of County Commissioners at a regular meeting 13 day of June 1960 and recorded in Journal L-D Pages 374-375 & 376
 William A. Dole
 Clerk
 June 13, 1960
 Logan County Engineer

AUDITORS OFFICE LOGAN COUNTY OHIO
 Transferred this 18 day of June 1961
 Auditor Logan County

RECORDERS OFFICE LOGAN COUNTY OHIO
 Received for Record at 2:14 o'clock P.M. June 19 1961
 Recorder Logan County

**CORPORATION LINE EXTENSION
OHIO
DEGRAFF**

PLEASANT TOWNSHIP LOGAN COUNTY
 SECTION 1 TOWN 2 RANGE 14
 MARCH 1960
 SCALE 1"=150'



INDEX NO
2528
COUNTY

J-120