

SURVEYORS CERTIFICATE

I hereby certify that the annexed Plat is a correct representation of the property to be annexed to the Village of DeGraff Ohio
Foster F Wright
Registered Surveyor No. 1673

AUDITORS OFFICE LOGAN COUNTY OHIO

Transferred this 4 day of MARCH 1960
Charles H Chamberlain
Auditor Logan County

155551

ACCEPTANCE

The annexed plat was approved and accepted by the Board of County Commissioners at a regular meeting 28 day of Sept. 1959 and recorded in Journal 1-N Page 395

Walter Keeney
Walter Cole
William Fox
Commissioners of Logan County

RECORDERS OFFICE LOGAN COUNTY OHIO

Received for Record at 9:30 o'clock AM March 10, 1960
Recorded in Plat Book 4 Volume D Page 70
Rowena L. Stapp
Recorder Logan County

ACCEPTANCE

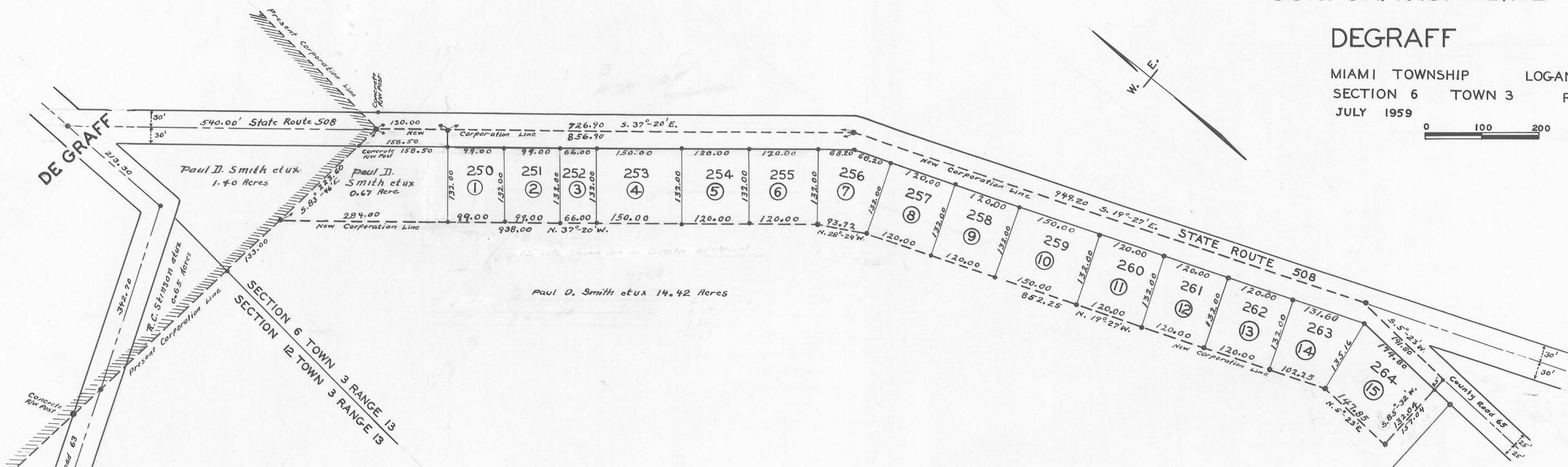
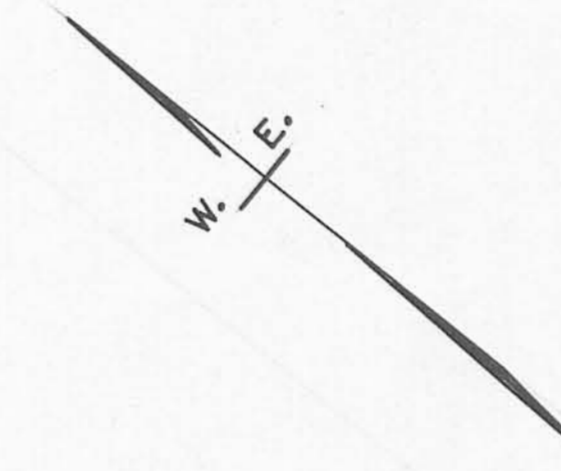
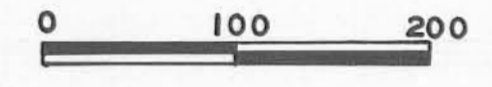
The annexed plat was adopted by Ordinance No 677 at an addition to the Village of DeGraff Ohio at a meeting of the Village Council on the 12th day of January 1960

Don E. Hoyle
Mary J. Slater
Mayor
City Clerk

CORPORATION LINE EXTENSION

DEGRAFF OHIO

MIAMI TOWNSHIP LOGAN COUNTY
SECTION 6 TOWN 3 RANGE 13
JULY 1959 1"=100'



- INDICATES IRONS
- FILE FW-268
- LOTS 1 TO 15 ARE IN SMITH ALLOTMENT

15 LOTS (SMITH ALLOTMENT)	5.46 ACRES
PAUL D. SMITH ET UX	0.67 ACRE
HIGHWAYS	1.36 ACRES
	<u>7.49 ACRES</u>

NUMBERS IN CIRCLES ARE ORIGINAL NUMBERS OF SMITH ALLOTMENT
OTHER NUMBERS ARE CONSECUTIVE NUMBERING FOR DEGRAFF LOTS

THIS TRACING TO BE FILED WITH LOGAN COUNTY ENGINEER

Consecutive Numbers Added March 3, 1960.



COUNTY INDEX NO. 2513 INDEXED ON MAP