

SURVEYORS CERTIFICATE

The accompanying plat represents a subdivision of land in the Township of Stokes, County of Logan, State of Ohio and is in Section 23, Town 6 S. Range 8 E. Anderson Ave. has an area of 0.35 of one acre. Cherokee Drive has an area of 0.89 of one acre making 1.24 acres in streets. Lots 1 to 17 has an area of 2.03 acres making a total of 3.27 acres in the allotment. I hereby certify that the accompanying plat is a correct representation of CHEROKEE ALLOTMENT

J. P. Knight
Civil Engineer

APPROVED *E. K. Carr*
DATE Dec. 12-1949 COUNTY ENGINEER

TRANSFERED December 17, 1949
Paul D. Bates
COUNTY AUDITOR

APPROVED *F. M. Knight*
DATE Dec. 12-1949
Paul D. Bates
COUNTY COMMISSIONERS

RECEIVED FOR RECORD December 12 1949
RECORDED IN PLAT BOOK C-3 PAGE 66
Paul D. Bates
COUNTY RECORDER

CHEROKEE ALLOTMENT

STOKES TOWNSHIP
LOGAN COUNTY OHIO
SECTION 23 TOWN 6 S. RANGE 8 E.
1"=25' 1949

DEDICATION

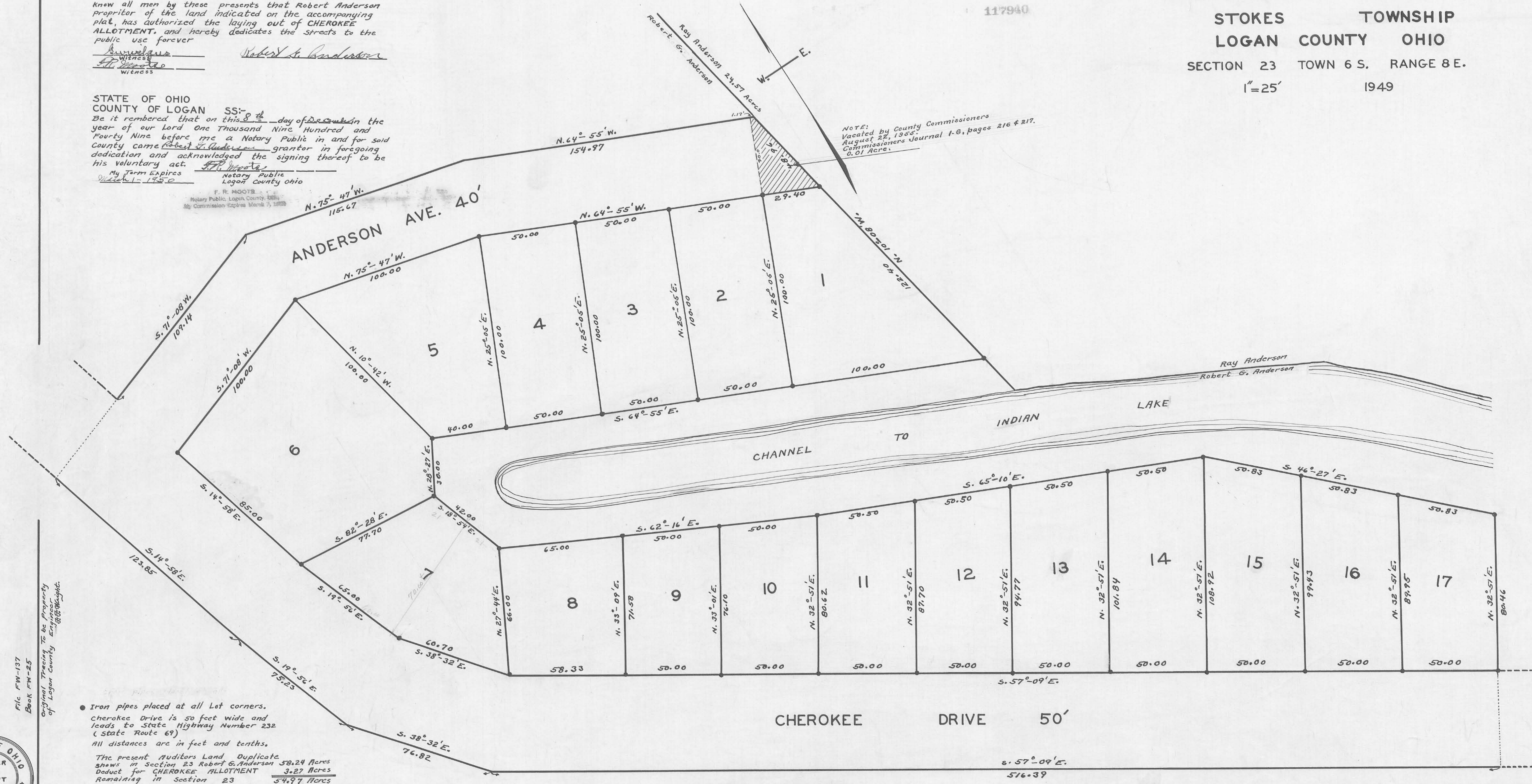
Know all men by these presents that Robert Anderson Proprietor of the land indicated on the accompanying plat, has authorized the laying out of CHEROKEE ALLOTMENT, and hereby dedicates the streets to the public use forever

Robert G. Anderson
Witness
J. P. Knight
Witness

STATE OF OHIO
COUNTY OF LOGAN SS:
Be it remembered that on this 8th day of December in the year of our Lord One Thousand Nine Hundred and Forty Nine before me a Notary Public in and for said County came Robert G. Anderson grantor in foregoing dedication and acknowledged the signing thereof to be his voluntary act.

J. P. Knight
Notary Public
Logan County Ohio
My Term Expires March 1, 1950

NOTE:
Vacated by County Commissioners
August 22, 1905
Commissioners Journal 1-6, pages 216 & 217.
0.01 Acre.



File FW-137
Book FW-25
Original Tracing to be Property of Logan County Engineer.

• Iron pipes placed at all Lot corners.
Cherokee Drive is 50 feet wide and leads to State Highway Number 232 (State Route 69)
All distances are in feet and tenths.
The present Auditors Land Duplicate shows in Section 23 Robert G. Anderson 58.24 Acres
Deduct for CHEROKEE ALLOTMENT 3.27 Acres
Remaining in Section 23 54.97 Acres

