

SURVEYOR'S CERTIFICATE:

I, William H. Lewis, hereby certify that the accompanying plat is a true representation of a survey made by me in September 1957 of 0.166 acres of land which is a part of an original 73 acre tract belonging to Uma C. Wolf. Said tract is within Stokes Twp., V.M.S. 12276, Logan Co., Ohio. All property lines extend to the waters edge. Plus or minus distances shown indicate footage to the present waterline. All irons have been placed as shown. Distances are indicated in feet and decimals of a foot.

Approved: William H. Lewis
William H. Lewis Engr-in-tring.
Walter V. Scott Professional Surveyor #2000

Know all men by these presence that I, Uma C. Wolf owner of the land indicated on this plat, have authorized the platting of same which is to be known as **LAKERIDGE SUBDIVISION NUMBER TWO**, and consisting of lots 40 to 51 incl.

In witness whereof the said Uma C. Wolf has set her hand this 9th day of October 1957.

Witness: Willis S. Sifer Grantor: Uma C. Wolf
Jamur P. Wolf

STATE OF OHIO ~ COUNTY OF LOGAN SS

Before me a Notary Public in and for said County, personally appeared the above named Grantor who acknowledged that she did sign the foregoing instrument and that the same was her free act and deed.

IN TESTIMONY WHEREOF, I have hereunto subscribed my name and affixed my official seal at Colleton, Ohio, this 9th day of October 1957. My Commission expires November 20, 1958.

Agnes M. Thelen
 Notary Public



APPROVAL:

We the undersigned, being the duly elected Commissioners of Logan County, Ohio, do hereby approve this plat as hereon shown this 9th day of October 1957.

Agnes M. Thelen
W. F. Long
Hugh [unclear]
 Logan County Commissioners

I hereby approve this plat as hereon shown this 9th day of October 1957.

146707

J. H. [unclear]
 Logan County Engineer

RECORDER'S CERTIFICATE:

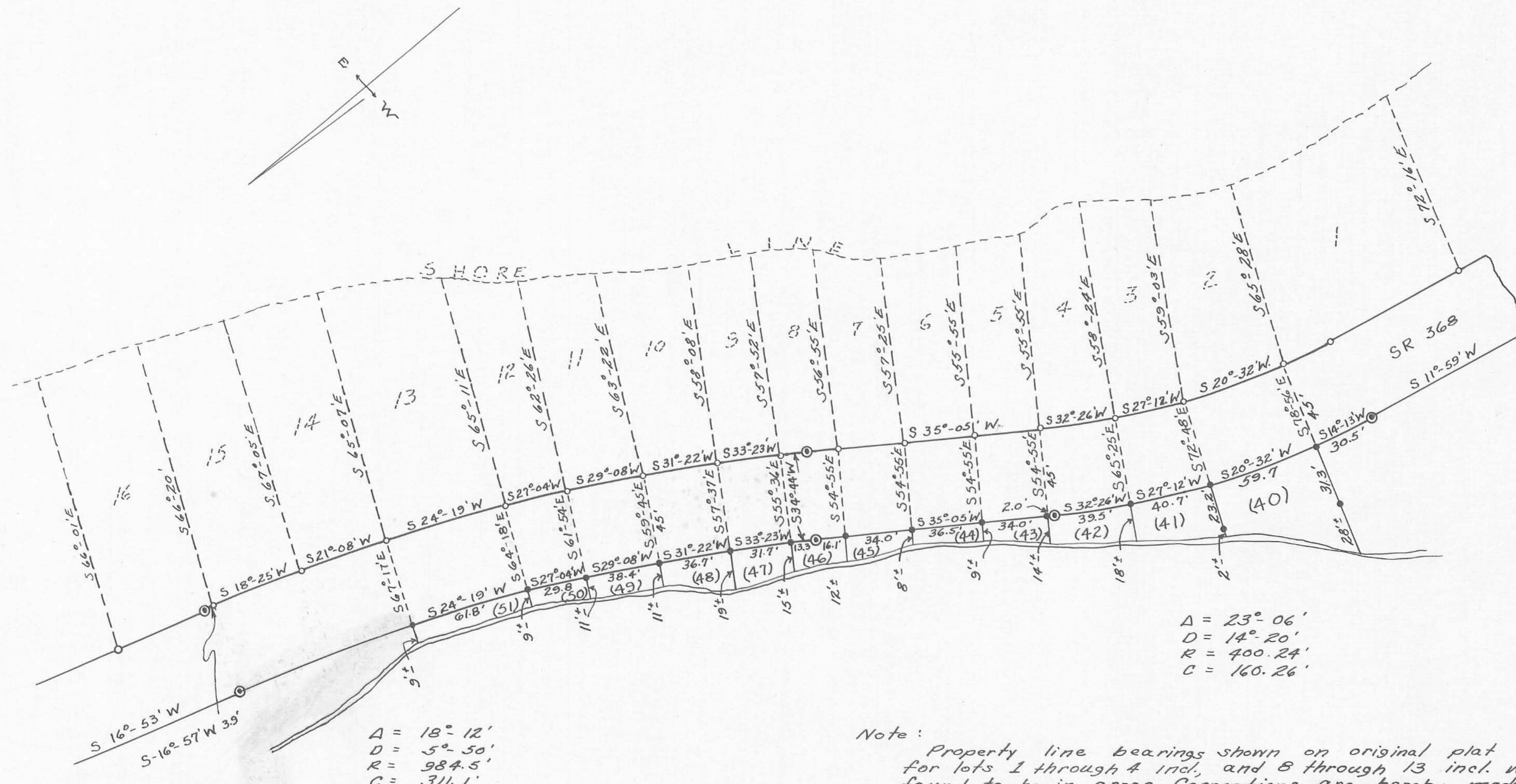
Filed for record this 9th day of October 1957 at 4:05 o'clock P.M.
 Recorded in Plat Book Volume 4D page 49

Rosina L. Strause
 Logan County Recorder

AUDITOR'S CERTIFICATE:

Transferred this 9th day of October 1957.

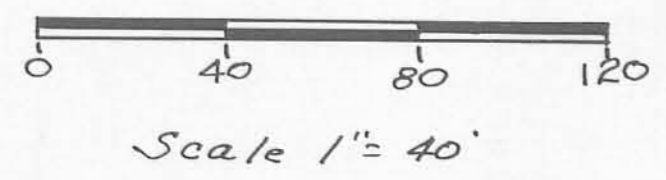
Harry C. Travis
 Logan County Auditor



$\Delta = 23^{\circ} 06'$
 $D = 14^{\circ} 20'$
 $R = 400.24'$
 $C = 160.26'$

Note: Property line bearings shown on original plat for lots 1 through 4 incl. and 8 through 13 incl. were found to be in error. Corrections are hereby made on this Plat.
 Original plat recorded in Plat Book D, Volume 4, Page 43

- ~ Indicates irons set.
- - Indicates irons existing
- ⊙ - Indicates highway monuments.



LAKERIDGE SUBDIVISION NO. 2