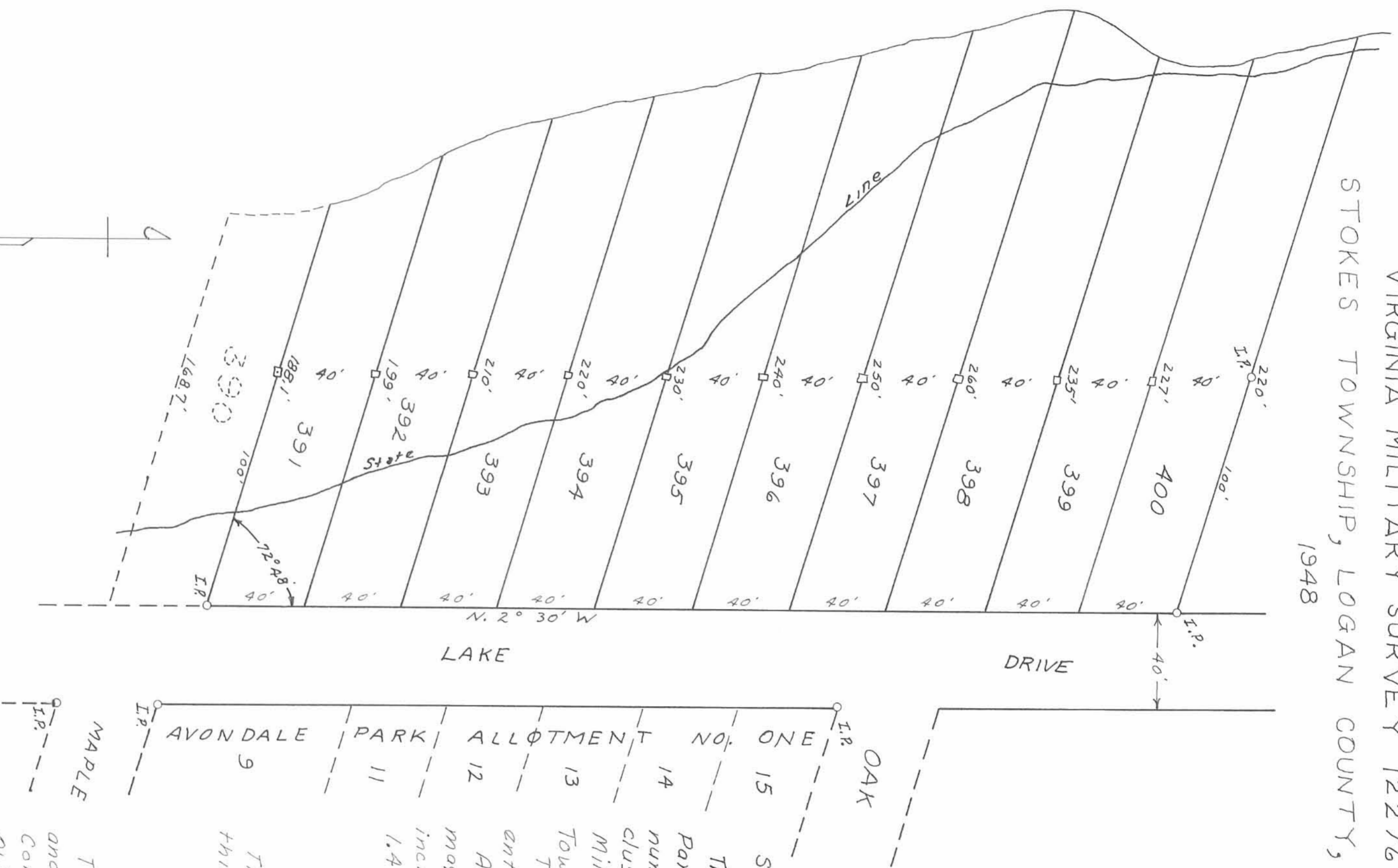


AVONDALE PARK ALLOTMENT NO. SIX.
 VIRGINIA MILITARY SURVEY 12276
 STOKES TOWNSHIP, LOGAN COUNTY, OHIO.
 1948



SURVEYORS CERTIFICATE

This plat represents Avondale Park Allotment No. Six, lots number 391 to 400 inclusive, of part of Virginia Military Survey 12276, Stokes Township, Logan County, Ohio. The dimensions are represented in feet and tenths. All bearings are the present magnetic bearings. The area included in this plat contains 1.42 acres.

Walter O. South
 Registered Surveyor No. 2000

ENGINEERS OFFICE

The annexed plat approved this day of November, 1948

Engineer, Logan County, Ohio

ACCEPTANCE

The annexed plat approved and accepted by the County Commissioners of Logan County, Ohio, this 8th day of November, 1948.

Paul J. O'Connell
E. C. Walker

AUDITORS OFFICE

The within lots transferred this 8 day of November, 1948.

Thomas J. Goble
 Auditor, Logan County, Ohio

RECORDERS OFFICE

Received for record at 11:05 o'clock A. M. on the 8th day of November, 1948.

Recorded in Plot Book C Volume 3 of Page 62.

Paul O. Bate
 Recorder, Logan County, Ohio

STATE OF OHIO SS: LOGAN COUNTY

Before me the undersigned a Notary Public in and for said County, personally appeared Andrew Sodders and Lona B. Sodders who acknowledged the signing of the foregoing plat and survey and that the same is their free act and deed.

In testimony whereof, I have hereunto subscribed my name and affixed my notarial seal this 8th day of November, 1948.

Walter O. South
 Notary Public

DEDICATION

We the undersigned Andrew Sodders and Lona B. Sodders, owners of the land shown on this plat and survey do hereby assent and adopt this addition of the same, and acknowledge that the same was made of our request.

Andrew Sodders
Lona B. Sodders

Walter O. South
Thomas J. Goble } Witnesses

NOTE: THIS TRACING DRAWN FROM A PRINTED COPY OF THE ORIGINAL. THE PRINTED COPY IS ON FILE IN THE OFFICE OF THE LOGAN COUNTY ENGINEER, FILE J-68. SIGNATURES ARE TRACED. DANIEL E. GILBERT, TAX MAP DRAFTSMAN, JUNE 1, 1970.